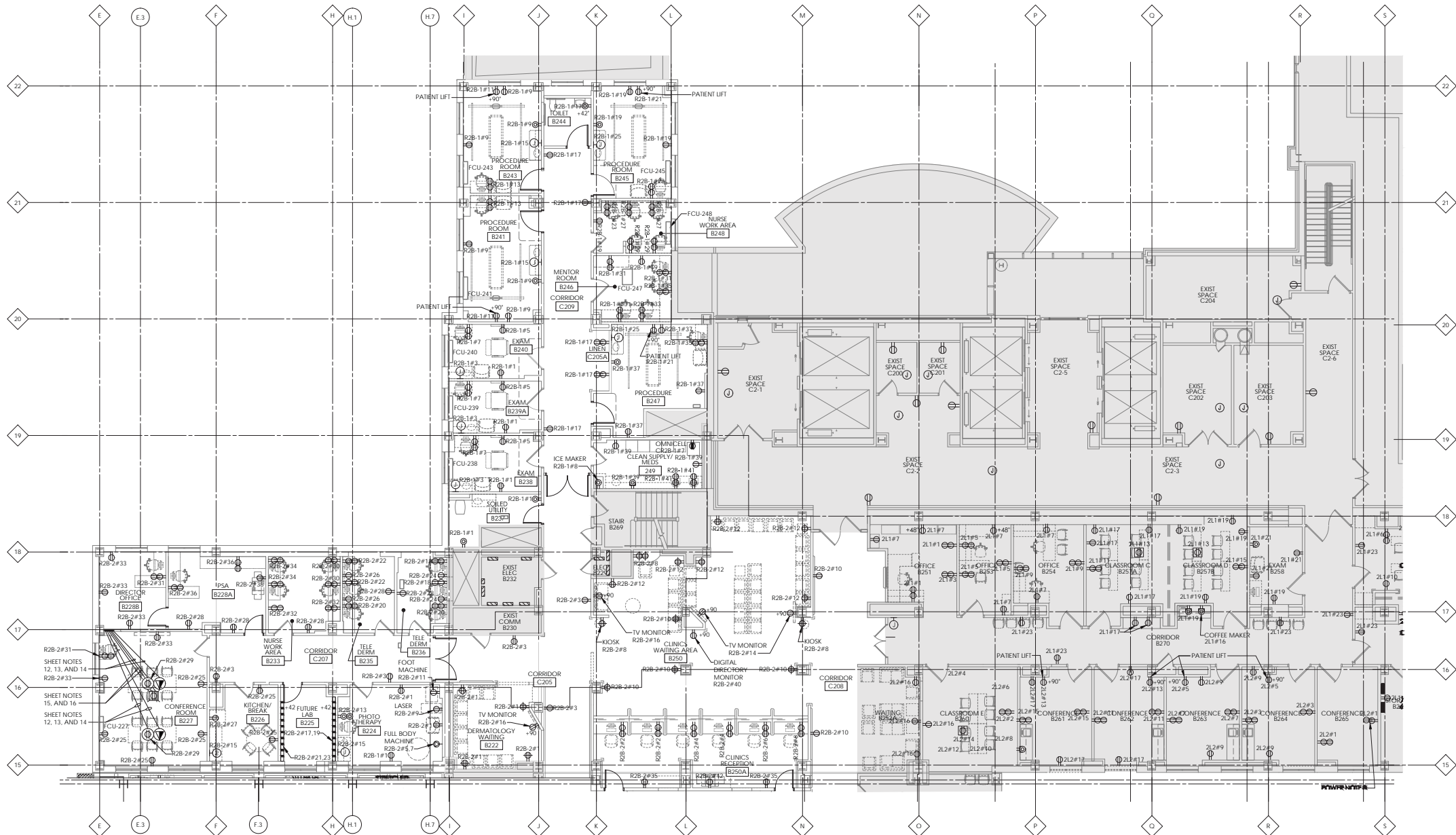


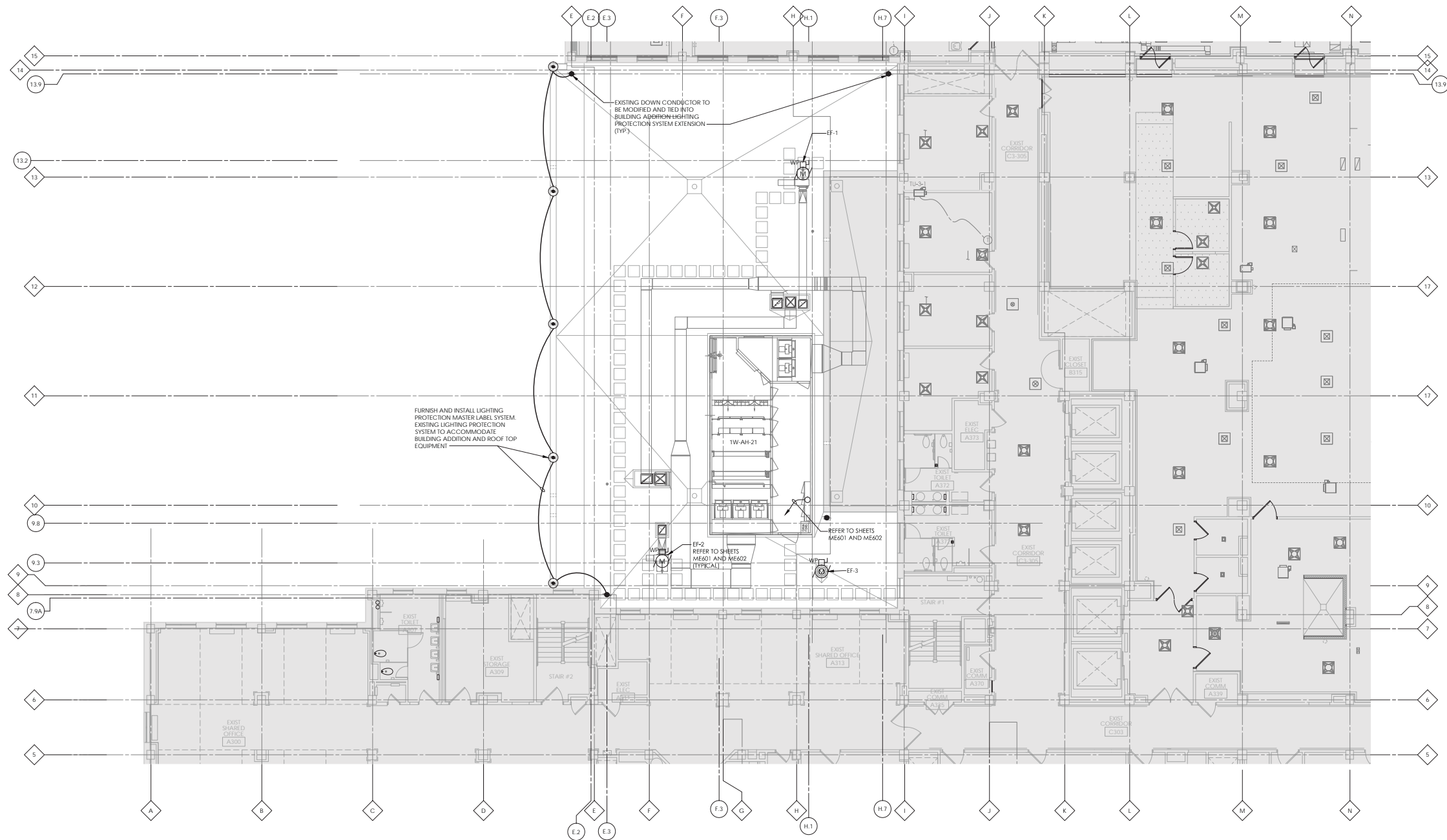
GENERAL NOTES

1. REFER TO SPECIFICATIONS FOR ADDITIONAL ELECTRICAL REQUIREMENTS.
2. REFER TO ARCHITECTURAL INTERIOR ELEVATIONS AND REFLECTED CEILING PLANS FOR COORDINATION OF ELECTRICAL DEVICES.
3. REFER TO CODE COMPLIANCE PLANS FOR FIRE BARRIERS, EGRESS PATHS AND TRAVEL DISTANCES ON SHEET G002 THROUGH G006.
4. REFER TO PHASING PLANS AND CONSTRUCTION ACCESS PLAN FOR COORDINATION OF ELECTRICAL DEVICES, EQUIPMENT, TEMPORARY PARTITION LOCATIONS, DEMOLITION AND INSTALLATION TIMING OF WORK ON SHEET NOS. GC100 AND IN SPECIFICATIONS.
5. REFER TO ARCHITECTURAL SHEETS FOR RATED WALL LOCATIONS, FLOOR SAW CUTTING AND REPAIR INFORMATION.
6. REFER TO MECHANICAL/ELECTRICAL SCHEDULES AND NOTES ON SHEETS M501 FOR ADDITIONAL INFORMATION.
7. THE FOLLOWING SHADING INDICATES:
  - SHADING INDICATES AREA OF EXISTING DEVICES, EQUIPMENT, AND FEEDERS TO REMAIN UNLESS NOTED OTHERWISE. AREAS FEATURING NO SHADING INDICATE WORK TO BE DEMOLISHED, FURNISHED AND INSTALLED UNDER THIS CONTRACT UNLESS NOTED OTHERWISE. ALL CIRCUITS/HOME RUNS OVERLAPPING WORK SCOPE AREA IS INCLUDED UNDER THIS CONTRACT.
8. THE FOLLOWING LINEWEIGHTS INDICATE:
  - LIGHT SOLID LINES INDICATE EXISTING EQUIPMENT, DEVICES, BRANCH CIRCUITS, AND FEEDERS TO REMAIN AND ARE SHOWN FOR REFERENCE ONLY. EXISTING LOCATIONS AND LAYOUT MAY DIFFER FROM LAYOUT SHOWN. FIELD VERIFY EXACT LOCATIONS AND LAYOUT.
  - DARK (BOLD) DASHED LINES INDICATE EXISTING EQUIPMENT, DEVICES, BRANCH CIRCUITS, AND FEEDERS TO BE REMOVED OR RELOCATED UNDER THIS CONTRACT. RELOCATED ITEMS WILL BE DESIGNATED WITH AN "R" NEXT TO THE EQUIPMENT OR FEEDER.
  - DARK (BOLD) SOLID LINES INDICATE EQUIPMENT, DEVICES, BRANCH CIRCUITS, AND FEEDERS TO BE FURNISHED AND INSTALLED UNDER THIS CONTRACT.

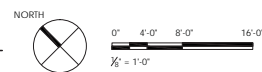
POWER NOTES

1. FURNISH AND INSTALL AN EQUIPMENT GROUNDING CONDUCTOR WITHIN THE RACEWAY(S) ALONG WITH PHASE CONDUCTIONS FOR ALL FEEDERS AND BRANCH CIRCUITS. CONDUIT IS NOT PERMITTED TO ACT AS AN EQUIPMENT GROUNDING CONDUCTOR UNLESS NOTED OTHERWISE.
2. FURNISH AND INSTALL A 4 INCH SQUARE BY 2-1/2 INCH DEEP OUTLET BOX WITH GFCI RECEPTACLE AT 24 INCHES ABOVE FINISHED FLOOR AND LOCATED UNDER SINK(S) FOR 24-VOLT WIRING OF EACH FAUCET INFRARED OPERATOR. LOCATE OUTLET BOX PER PLUMBING FIXTURE MANUFACTURER'S INSTRUCTIONS. CONNECT INFRARED FAUCETS FOR SINKS TO 120/24V TRANSFORMER SERVING URINAL AND WATER CLOSET FLUSH VALVES. DO NOT EXCEED TEN (10) FLUSH VALVES OR FAUCETS. COORDINATE LOCATION AND ROUTING WITH SENSOR SYSTEM INSTALLER.
3. ALL 120V RECEPTACLES WITHIN 6 FEET OF SINKS SHALL BE GFCI TYPE. ALL MULTI-OUTLET STRIPS MOUNTED WITHIN 6 FEET OF SINKS SHALL BE CONNECTED TO GFCI BREAKERS.
4. LETTERS AND NUMBERS IN PARENTHESIS, LOCATED NEXT TO ELECTRICAL DEVICES, FOLLOWING ROOM NAMES AND NUMBERS, REPRESENT PANEL DESIGNATIONS AND CORRESPONDING CIRCUIT NUMBERS. CIRCUIT NUMBERS INDICATED FOR EXISTING PANELS ARE SCHEMATIC ONLY. FIELD VERIFY EXACT CIRCUIT NUMBERS.
5. HCF/MC CABLE IS NOT ACCEPTABLE EXCEPT FOR LIGHT FIXTURE WHIPS FROM JUNCTION BOX TO FIXTURES ONLY. MAXIMUM OF 6'-0" IN LENGTH.
6. FURNISH AND INSTALL PLUGSTRIP WITH DUPLEX RECEPTACLES. USE WIREMOLD "5200" SERIES RACEWAY OR EQUAL WITH THE SALENT CHARACTERISTICS OF THE SPECIFIED PRODUCT BY HUBBELL, PANDUIT, OR MONO-SYSTEMS. REFER TO DETAIL ON SHEET EP501.
7. CONNECT POWERED PROTECTION SCREENS CONTROL TO CONFERENCE LIGHTING CONTROL SYSTEM. REFER TO SHEET E1503.
8. CONVERT SINGLE DUPLEX RECEPTACLE TO DOUBLE DUPLEX RECEPTACLE.
9. FURNISH AND INSTALL NEMA 14-50R, 4 WIRE RANGE RECEPTACLE. COORDINATE WITH ARCHITECTURAL TRADES FOR ACTUAL RANGE AND PLUG PROVIDED.
10. RE-CIRCUIT EXISTING RECEPTACLE(S) TO CIRCUIT INDICATED.
11. FURNISH AND INSTALL 70A-3P-480V CIRCUIT BREAKER WITH 120V SHUNT TRIP IN NEMA 1 RECESSED ENCLOSURE. INTERCONNECTING CONDUIT AND WIRING BY X-RAY MANUFACTURER/VENDOR/INSTALLER. COORDINATE LOCATION OF MAIN CIRCUIT BREAKER AND CONDUIT SUB-OUTS FOR POWER TO GENERATOR CABINET AND EMERGENCY STOP PUSH BUTTONS. REFER TO SHEET EP607.
12. REFER TO THIS SHEET FOR TYPICAL DETAIL OF POWER CONNECTIONS TO ENERGIZED FURNITURE.
13. CONFERENCE ROOM TABLE HAS DUAL OUTLETS FOR POWER, TELEPHONE, AND DATA WITH TABLE TOP JUNCTION BOX.
14. ALL ELECTRICAL DEVICES SHOWN WITHIN OFFICE FURNITURE LAYOUT ARE COORDINATED WITH OPEN BACK FURNITURE STYLE. COORDINATE WITH FURNITURE VENDOR FOR FINAL CONNECTION REQUIREMENTS.
15. FURNISH AND INSTALL 3/4" CONDUIT FOR POWER AND 1 1/4" CONDUIT FOR AV CABLING FROM CEILING PROJECTOR BOX TO FLOOR BOX. REFER TO IN-SLAB FLOOR BOX DETAIL ON SHEET EP501.
16. REFER TO ARCHITECTURAL SHEETS FOR FLOOR SAW CUTTING AND REPAIR.



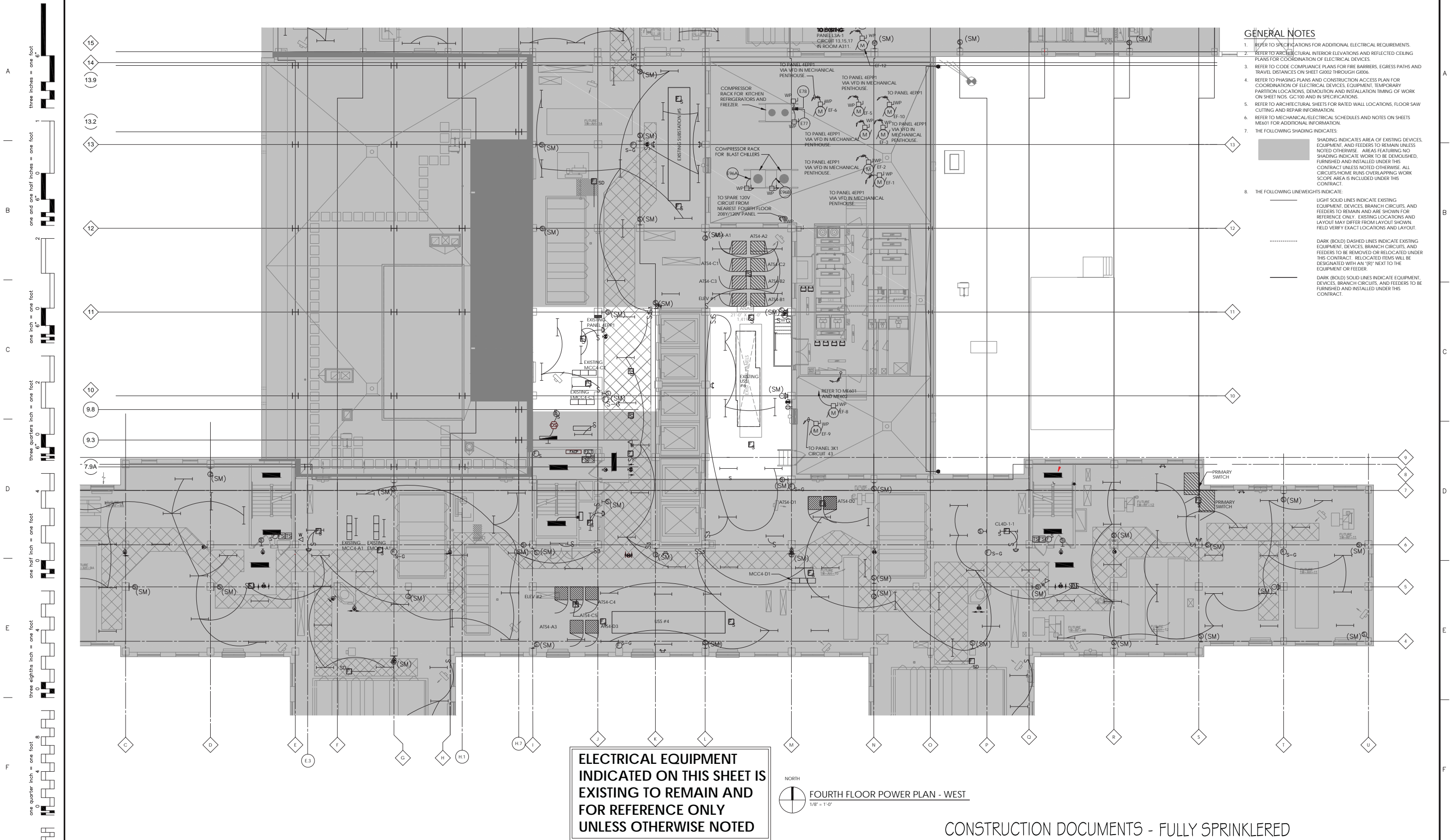


THIRD FLOOR AND ROOF POWER PLAN - WEST



CONSTRUCTION DOCUMENTS - FULLY SPRINKLERED

		<div>KEY PLAN</div> <div></div>		<div>ARCHITECT/ENGINEERS:</div> <div><div>Albert Kahn Associates, Inc. Albert Kahn Building 7430 Second Ave. Detroit, Michigan 48202-2798 Also a Kahn Associates, Inc. is a member of the Albert Kahn Family of Companies. ALBERT KAHN JOB # C092-02.000</div></div> <div><div>MIDWESTERN CONSULTING</div><div>Civil, Environmental and Transportation Engineers Planners, Surveyors Landscape Architects</div><div>3815 Plaza Drive Ann Arbor, Michigan 48108 Phone: 734.995.0200 Fax 734.995.0599</div></div>		<div>Drawing Title</div> <div>THIRD FLOOR AND ROOF POWER PLAN - WEST</div> <div>Approved</div> <div>P. GARLAND</div>		<div>Drawing Title</div> <div>DEPARTMENT OF VETERANS AFFAIRS BUILD OUT CLINICS</div> <div>Location</div> <div>ANN ARBOR, MICHIGAN</div> <div>Date</div> <div>02-06-15</div> <div>Checked</div> <div>PMW</div> <div>Dram</div> <div>PMW, FED</div> <div>Project Number</div> <div>506-327</div> <div>Building Number</div> <div>1-W</div> <div>Drawing Number</div> <div>EP103W Dep. 140 of 189</div>		<div>Office of Construction and Facilities Management</div> <div></div>			
ISSUE 004 - BID		02/05/15											
Revision:		Date											



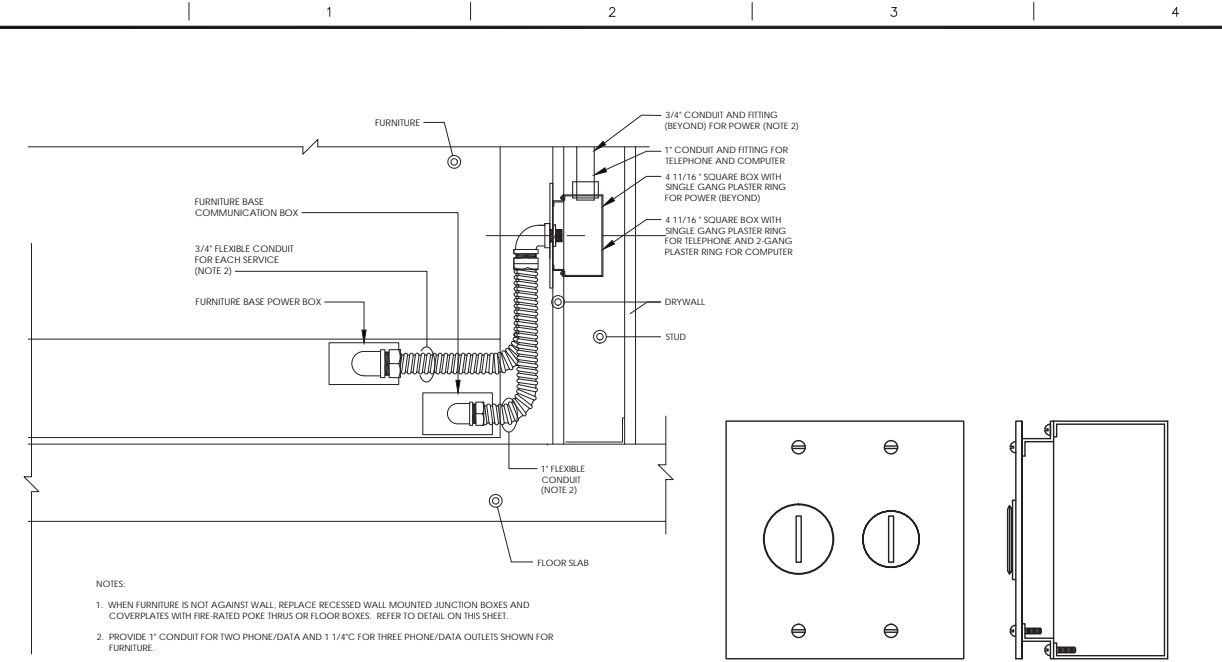
- GENERAL NOTES**
1. REFER TO SPECIFICATIONS FOR ADDITIONAL ELECTRICAL REQUIREMENTS.
  2. REFER TO ARCHITECTURAL INTERIOR ELEVATIONS AND REFLECTED CEILING PLANS FOR COORDINATION OF ELECTRICAL DEVICES.
  3. REFER TO CODE COMPLIANCE PLANS FOR FIRE BARRIERS, EGRESS PATHS AND TRAVEL DISTANCES ON SHEET G002 THROUGH G006.
  4. REFER TO PHASING PLANS AND CONSTRUCTION ACCESS PLAN FOR COORDINATION OF ELECTRICAL DEVICES, EQUIPMENT, TEMPORARY PARTITION LOCATIONS, DEMOLITION AND INSTALLATION TIMING OF WORK ON SHEET NOS. G0100 AND IN SPECIFICATIONS.
  5. REFER TO ARCHITECTURAL SHEETS FOR RATED WALL LOCATIONS, FLOOR SAW CUTTING AND REPAIR INFORMATION.
  6. REFER TO MECHANICAL/ELECTRICAL SCHEDULES AND NOTES ON SHEETS ME601 FOR ADDITIONAL INFORMATION.
  7. THE FOLLOWING SHADING INDICATES:
    - SHADING INDICATES AREA OF EXISTING DEVICES, EQUIPMENT, AND FEEDERS TO REMAIN UNLESS NOTED OTHERWISE. AREAS FEATURING NO SHADING INDICATE WORK TO BE DEMOLISHED, FURNISHED AND INSTALLED UNDER THIS CONTRACT UNLESS NOTED OTHERWISE. ALL CIRCUIT/PHONE RINGS OVERLAPPING WORK SCOPE AREA IS INCLUDED UNDER THIS CONTRACT.
  8. THE FOLLOWING LINEWEIGHTS INDICATE:
    - LIGHT SOLID LINES INDICATE EXISTING EQUIPMENT, DEVICES, BRANCH CIRCUITS, AND FEEDERS TO REMAIN AND ARE SHOWN FOR REFERENCE ONLY. EXISTING LOCATIONS AND LAYOUT MAY DIFFER FROM LAYOUT SHOWN. FIELD VERIFY EXACT LOCATIONS AND LAYOUT.
    - DARK (BOLD) DASHED LINES INDICATE EXISTING EQUIPMENT, DEVICES, BRANCH CIRCUITS, AND FEEDERS TO BE REMOVED OR RELOCATED UNDER THIS CONTRACT. RELOCATED ITEMS WILL BE DESIGNATED WITH AN "R" NEXT TO THE EQUIPMENT OR FEEDER.
    - DARK (BOLD) SOLID LINES INDICATE EQUIPMENT, DEVICES, BRANCH CIRCUITS, AND FEEDERS TO BE FURNISHED AND INSTALLED UNDER THIS CONTRACT.

<b>KEY PLAN</b> 		<b>ARCHITECT/ENGINEERS:</b>  <b>Albert Kahn Associates, Inc.</b> Albert Kahn Building 7430 Second Ave. Detroit, Michigan 48202-2798 Albert Kahn Associates, Inc. is a member of the Albert Kahn Family of Companies. © 2007 ALBERT KAHN JOB # 0092-00.000		<b>MIDWESTERN CONSULTING</b>  Civil, Environmental and Transportation Engineers Planners, Surveyors Landscape Architects 3815 Plaza Drive Ann Arbor, Michigan 48108 Phone: 734.995.0200 Fax 734.995.0599		<b>Drawing Title</b> <b>FOURTH FLOOR POWER PLAN - WEST</b>  <b>Approved:</b> P. GARLAND		<b>Project Title</b> <b>DEPARTMENT OF VETERANS AFFAIRS BUILD OUT CLINICS</b>  <b>Location</b> ANN ARBOR, MICHIGAN  <b>Date</b> 02-06-15  <b>Checked</b> PMW  <b>Drawn</b> PMW/FED		<b>Project Number</b> 506-327 <b>Building Number</b> 1-W <b>Drawing Number</b> EP-104W Dwg. 141 of 189		<b>Office of Construction and Facilities Management</b> 	
---------------------	--	--	--	--	--	---	--	--	--	--	--	---	--

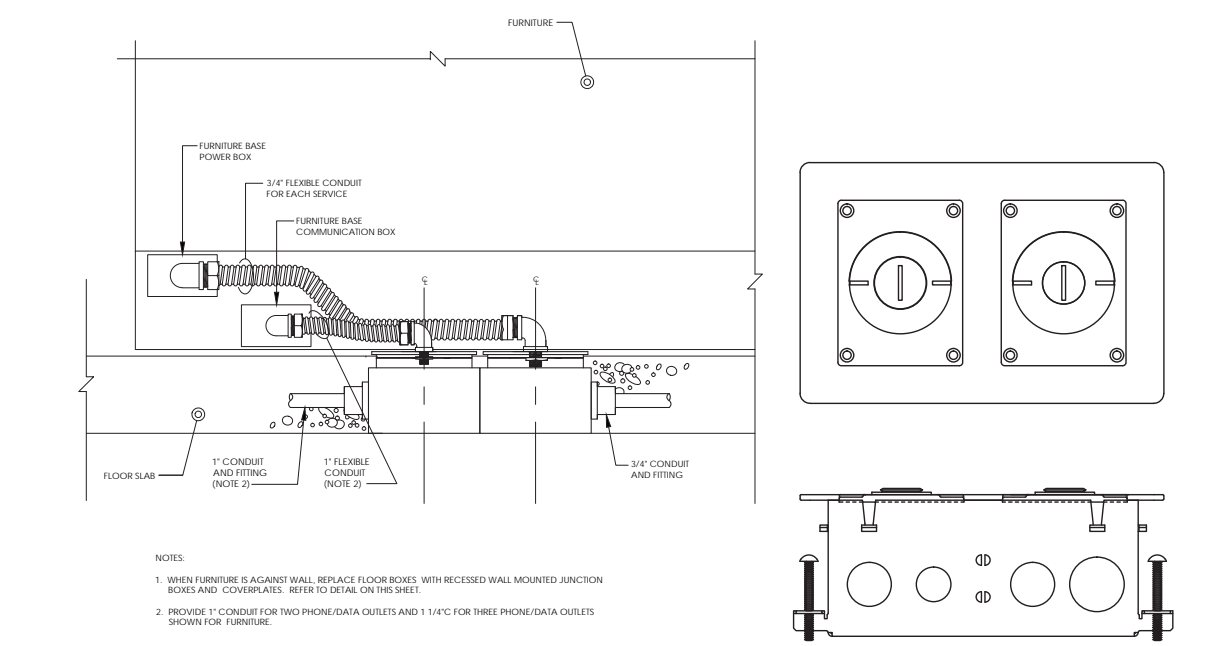
VA FORM 08-6231



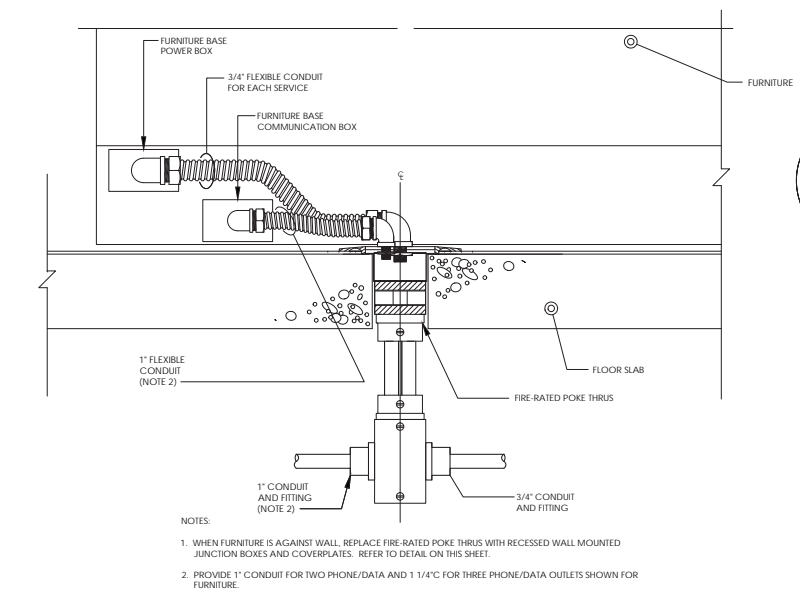
three inches = one foot  
one and one half inches = one foot  
one inch = one foot  
three quarters inch = one foot  
one half inch = one foot  
one quarter inch = one foot  
one eighth inch = one foot



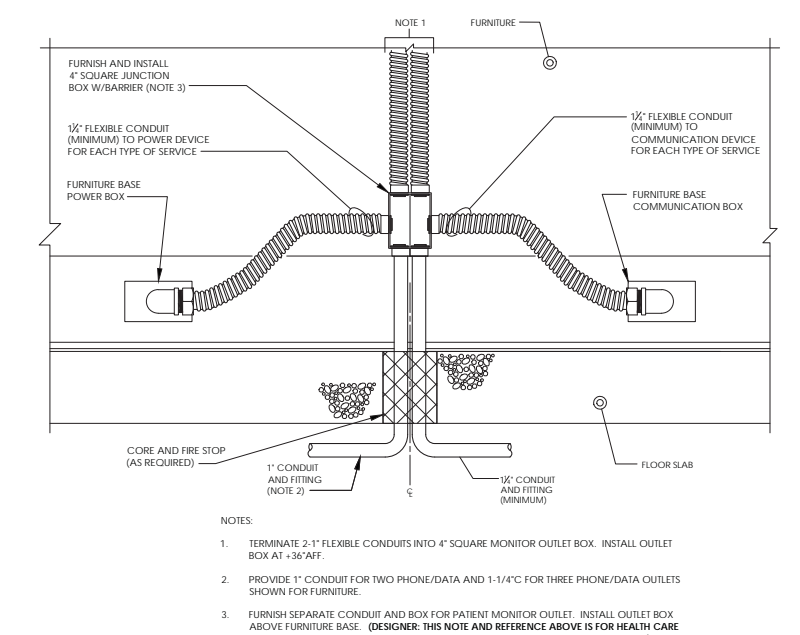
3  
DETAIL OF FURNITURE CONNECTIONS  
FOR POWER-IN AND COMMUNICATIONS  
NOT TO SCALE



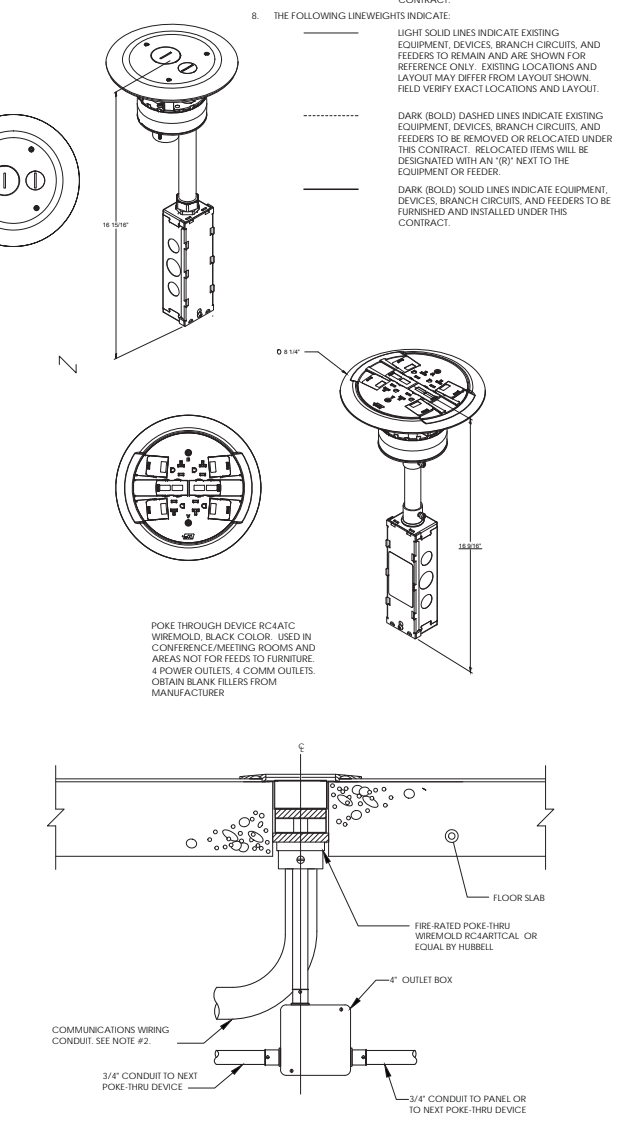
4  
DETAIL OF FURNITURE BASE CONNECTIONS  
FOR POWER-IN AND COMMUNICATIONS  
NOT TO SCALE



1  
DETAIL OF FURNITURE BASE CONNECTIONS  
FOR POWER-IN AND COMMUNICATIONS  
NOT TO SCALE



2  
DETAIL OF FURNITURE BASE CONNECTIONS  
FOR POWER-IN AND COMMUNICATIONS  
NOT TO SCALE



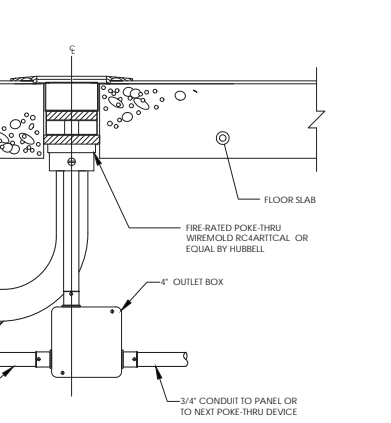
5  
DETAIL OF POKE-THRU DEVICE  
FOR POWER AND COMMUNICATIONS  
NOT TO SCALE

### GENERAL NOTES

- REFER TO SPECIFICATIONS FOR ADDITIONAL ELECTRICAL REQUIREMENTS.
- REFER TO ARCHITECTURAL INTERIOR ELEVATIONS AND REFLECTED CEILING PLANS FOR COORDINATION OF ELECTRICAL DEVICES.
- REFER TO CODE COMPLIANCE PLANS FOR FIRE BARRIERS, EGRESS PATHS AND TRAVEL DISTANCES ON SHEET G1002 THROUGH G1006.
- REFER TO PHASING PLANS AND CONSTRUCTION ACCESS PLAN FOR COORDINATION OF ELECTRICAL DEVICES, EQUIPMENT, TEMPORARY PARTITION LOCATIONS, DEMOLITION AND INSTALLATION TIMING OF WORK ON SHEET NOS. G1000 AND IN SPECIFICATIONS.
- REFER TO ARCHITECTURAL SHEETS FOR RATED WALL LOCATIONS, FLOOR SAW CUTTING AND REPAIR INFORMATION.
- REFER TO MECHANICAL/ELECTRICAL SCHEDULES AND NOTES ON SHEETS ME001 FOR ADDITIONAL INFORMATION.
- THE FOLLOWING SHADING INDICATES:
  - SHADING INDICATES AREA OF EXISTING DEVICES, EQUIPMENT, AND FEEDERS TO REMAIN UNLESS NOTED OTHERWISE. AREAS FEATURING NO SHADING INDICATE WORK TO BE DEMOLISHED, FURNISHED AND INSTALLED UNDER THIS CONTRACT UNLESS NOTED OTHERWISE. ALL CIRCUIT/SYSTEM RUNS OVERLAPPING WORK SCOPE AREA IS INCLUDED UNDER THIS CONTRACT.

- THE FOLLOWING LINEWEIGHTS INDICATE:
  - LIGHT SOLID LINES INDICATE EXISTING EQUIPMENT, DEVICES, BRANCH CIRCUITS, AND FEEDERS TO REMAIN AND ARE SHOWN FOR REFERENCE ONLY. EXISTING LOCATIONS AND LAYOUT MAY DIFFER FROM LAYOUT SHOWN. FIELD VERIFY EXACT LOCATIONS AND LAYOUT.
  - DARK (BOLD) DASHED LINES INDICATE EXISTING EQUIPMENT, DEVICES, BRANCH CIRCUITS, AND FEEDERS TO BE REMOVED OR RELOCATED UNDER THIS CONTRACT. RELOCATED ITEMS WILL BE DESIGNATED WITH AN 'R' NEXT TO THE EQUIPMENT OR FEEDER.
  - DARK (BOLD) SOLID LINES INDICATE EQUIPMENT, DEVICES, BRANCH CIRCUITS, AND FEEDERS TO BE FURNISHED AND INSTALLED UNDER THIS CONTRACT.



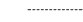

POKE THROUGH DEVICE RC4ATC WIREMOLD, BLACK COLOR. USED IN CONFERENCE/MEETING ROOMS AND AREAS NOT FOR FEEDS TO FURNITURE. 4 POWER OUTLETS, 4 COMM OUTLETS. OBTAIN BLANK FILLS FROM MANUFACTURER.

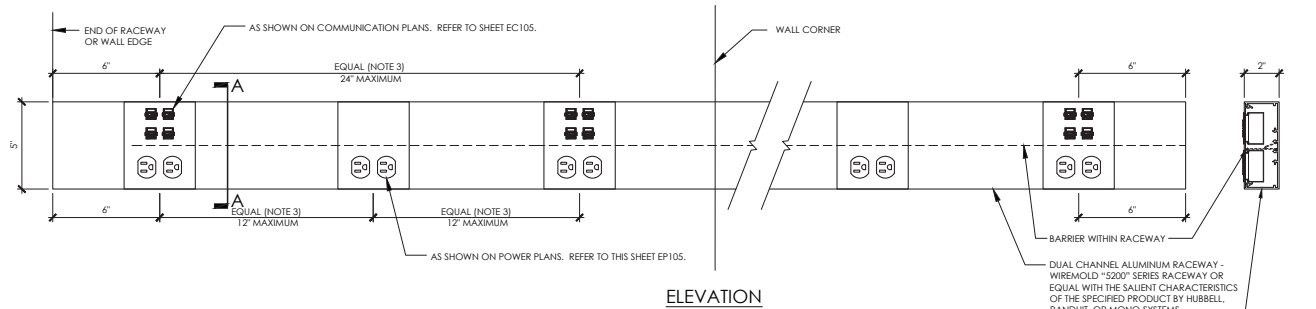


5  
DETAIL OF POKE-THRU DEVICE  
FOR POWER AND COMMUNICATIONS  
NOT TO SCALE

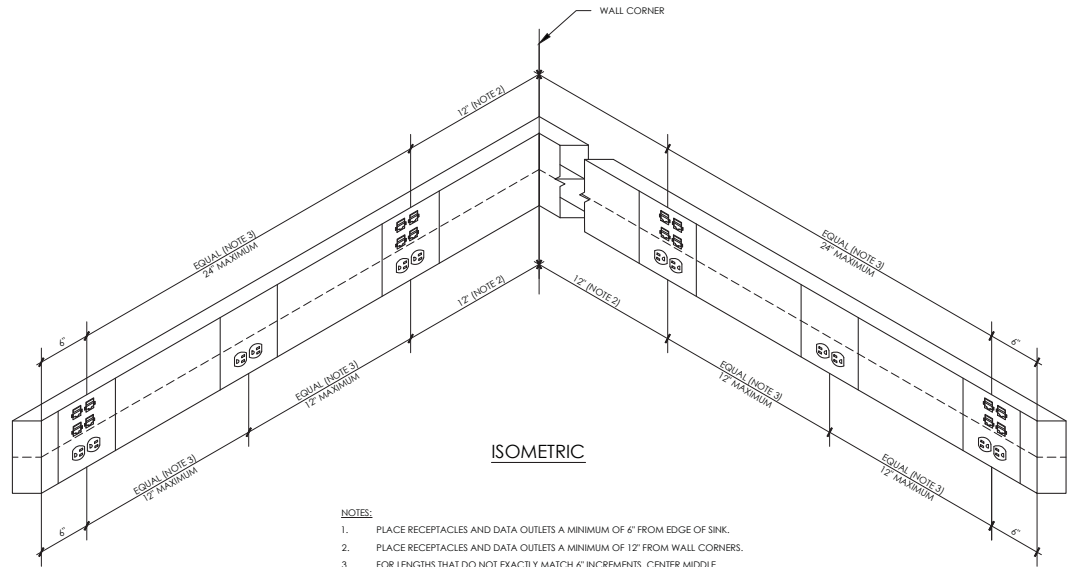
Project Title <b>DEPARTMENT OF VETERANS AFFAIRS BUILD OUT CLINICS</b>		Project Number <b>506-327</b>	
Location <b>ANN ARBOR, MICHIGAN</b>		Building Number <b>1-W</b>	
Date <b>02-06-15</b>	Checked <b>PMW</b>	Drawn <b>PMW, FED</b>	Drawing Number <b>EP501</b>
			Dwg. 142 of 189

three inches = one foot  
one and one half inches = one foot  
one inch = one foot  
three quarters inch = one foot  
one half inch = one foot  
three eighths inch = one foot  
one quarter inch = one foot  
one eighth inch = one foot

- GENERAL NOTES**
- REFER TO SPECIFICATIONS FOR ADDITIONAL ELECTRICAL REQUIREMENTS.
  - REFER TO ARCHITECTURAL INTERIOR ELEVATIONS AND REFLECTED CEILING PLANS FOR COORDINATION OF ELECTRICAL DEVICES.
  - REFER TO CODE COMPLIANCE PLANS FOR FIRE BARRIERS, EGRESS PATHS AND TRAVEL DISTANCES ON SHEET G1002 THROUGH G1006.
  - REFER TO PHASING PLANS AND CONSTRUCTION ACCESS PLAN FOR COORDINATION OF ELECTRICAL DEVICES, EQUIPMENT, TEMPORARY PARTITION LOCATIONS, DEMOLITION AND INSTALLATION TIMING OF WORK ON SHEET NOS. G1100 AND IN SPECIFICATIONS.
  - REFER TO ARCHITECTURAL SHEETS FOR RATED WALL LOCATIONS, FLOOR SAW CUTTING AND REPAIR INFORMATION.
  - REFER TO MECHANICAL/ELECTRICAL SCHEDULES AND NOTES ON SHEETS M501 FOR ADDITIONAL INFORMATION.
  - THE FOLLOWING SHADING INDICATES:  
 SHADING INDICATES AREA OF EXISTING DEVICES, EQUIPMENT, AND FEEDERS TO REMAIN UNLESS NOTED OTHERWISE. AREAS FEATURING NO SHADING INDICATE WORK TO BE DEMOLISHED, FURNISHED AND INSTALLED UNDER THIS CONTRACT UNLESS NOTED OTHERWISE. ALL CIRCUIT/RUNNE RUNS OVERLAPPING WORK SCOPE AREA IS INCLUDED UNDER THIS CONTRACT.
  - THE FOLLOWING LINEWEIGHTS INDICATE:  
 LIGHT SOLID LINES INDICATE EXISTING EQUIPMENT, DEVICES, BRANCH CIRCUITS, AND FEEDERS TO REMAIN AND ARE SHOWN FOR REFERENCE ONLY. EXISTING LOCATIONS AND LAYOUT MAY DIFFER FROM LAYOUT SHOWN. FIELD VERIFY EXACT LOCATIONS AND LAYOUT.  
 DARK (BOLD) DASHED LINES INDICATE EXISTING EQUIPMENT, DEVICES, BRANCH CIRCUITS, AND FEEDERS TO BE REMOVED OR RELOCATED UNDER THIS CONTRACT. RELOCATED ITEMS WILL BE DESIGNATED WITH AN "RT" NEXT TO THE EQUIPMENT OR FEEDER.  
 DARK (BOLD) SOLID LINES INDICATE EQUIPMENT, DEVICES, BRANCH CIRCUITS, AND FEEDERS TO BE FURNISHED AND INSTALLED UNDER THIS CONTRACT.

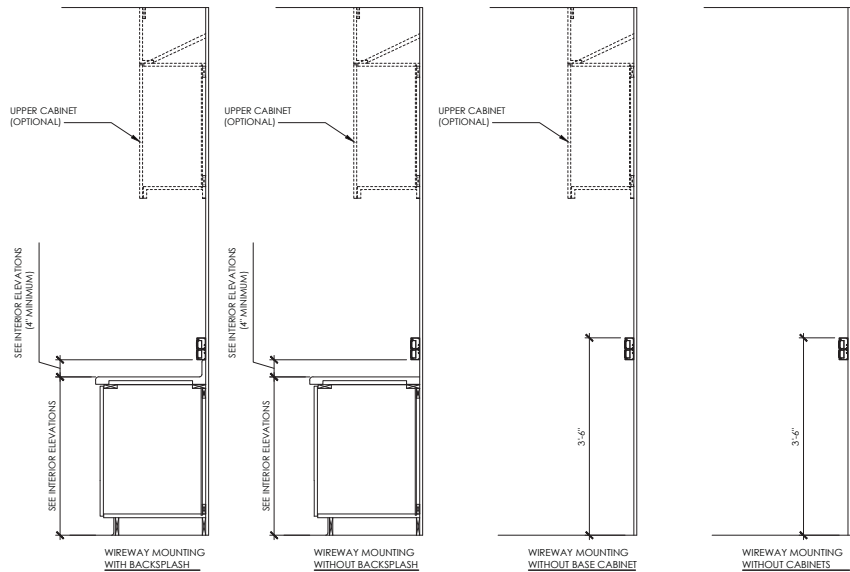


**SECTION A-A**



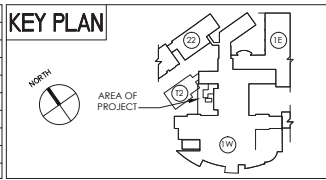
- NOTES:**
- PLACE RECEPTACLES AND DATA OUTLETS A MINIMUM OF 6" FROM EDGE OF SINK.
  - PLACE RECEPTACLES AND DATA OUTLETS A MINIMUM OF 12" FROM WALL CORNERS.
  - FOR LENGTHS THAT DO NOT EXACTLY MATCH 6" INCREMENTS, CENTER MIDDLE RECEPTACLES AND DATA OUTLETS EQUALLY ON CENTER (12" MAXIMUM FOR RECEPTACLES, 24" MAXIMUM FOR DATA OUTLETS).
  - ALL 120V RECEPTACLES WITHIN 6'-0" OF SINKS SHALL BE GFCI TYPE.
  - MOUNT RACEWAY AS FOLLOWS:  
a. COUNTERS WITH BACKSPLASH - BOTTOM OF RACEWAY TO TOP OF BACKSPLASH  
b. COUNTERS WITHOUT BACKSPLASH - BOTTOM OF RACEWAY 6" ABOVE COUNTER  
c. NO CABINETS OR COUNTERS - TOP OF RACEWAY AT 48" ABOVE FINISHED FLOOR
  - CIRCUIT PLUGSTRIP SO THAT EVERY OTHER DUPLEX RECEPTACLE IS ON A DIFFERENT CIRCUIT WITH A MAXIMUM OF FOUR DUPLEX RECEPTACLES ON A CIRCUIT.
  - FURNISH AND INSTALL TWO 20A CIRCUITS TO FEED INTO EACH GROUP OF 1 OR 2 WORKSTATIONS WITH ONE CIRCUIT DESIGNATED FOR COMPUTER POWER AND ONE CIRCUIT DESIGNATED FOR TASK LIGHTS AND CONVENIENCE RECEPTACLES.
  - USE WIREMOLD "5200" SERIES RACEWAY OR EQUAL WITH THE SALIENT CHARACTERISTICS OF THE SPECIFIED PRODUCT BY HUBBELL, PANDUIT, OR MONO-SYSTEMS. REFER TO DETAIL ON SHEET EP501.

**1 DETAIL OF IN-SLAB FLOOR BOX FOR POWER AND COMMUNICATIONS**  
NOT TO SCALE



**2 ALUMINUM RACEWAY DETAIL**  
NOT TO SCALE

ISSUE 004 - BID	02/05/15
ISSUE 003 - CD OWNER REVIEW	10/21/14
Revisions	Date



**ARCHITECT/ENGINEERS:**

**Kahn**

Albert Kahn Associates, Inc.  
Albert Kahn Building  
7430 Second Ave.  
Detroit, Michigan 48202-2798  
Albert Kahn Associates, Inc. is a member of  
the Albert Kahn Family of Companies. © 2007  
ALBERT KAHN JOB # 0092-00.000

**MIDWESTERN CONSULTING**

Civil, Environmental and  
Transportation Engineers  
Planners, Surveyors  
Landscape Architects

3815 Plaza Drive  
Ann Arbor, Michigan 48108  
Phone: 734.995.0200  
Fax: 734.995.0599

**Drawing Title**  
POWER DETAILS

**Approved**  
P. GARLAND

**Project Title**  
DEPARTMENT OF  
VETERANS AFFAIRS  
BUILD OUT CLINICS

**Location**  
ANN ARBOR, MICHIGAN

**Date**  
02-06-15

**Checked**  
PMW

**Drawn**  
PMW, FED

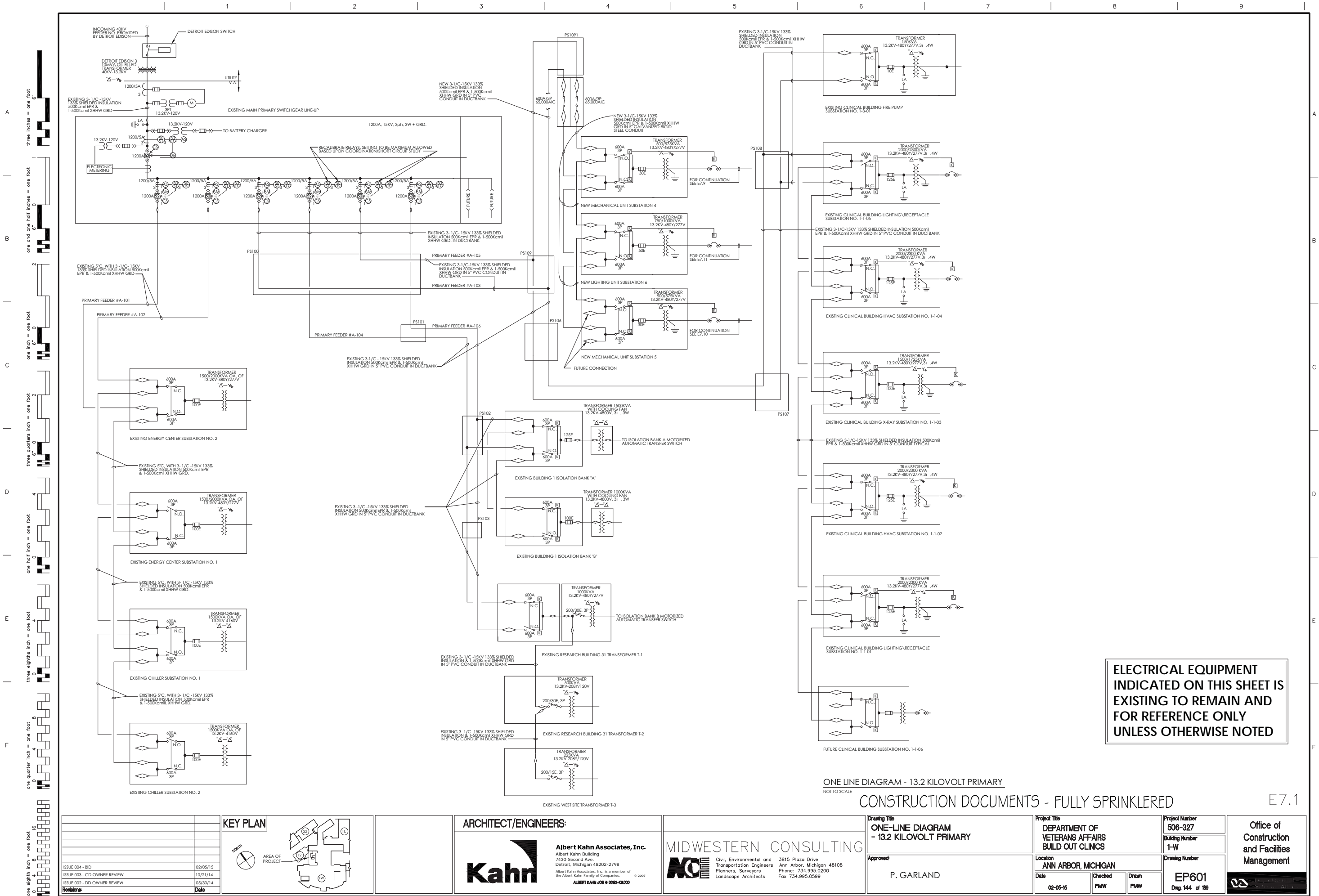
**Project Number**  
506-327

**Building Number**  
1-W

**Drawing Number**  
EP502  
Dwg. 143 of 189

**Office of  
Construction  
and Facilities  
Management**

CONSTRUCTION DOCUMENTS - FULLY SPRINKLERED



ELECTRICAL EQUIPMENT  
INDICATED ON THIS SHEET IS  
EXISTING TO REMAIN AND  
FOR REFERENCE ONLY  
UNLESS OTHERWISE NOTED

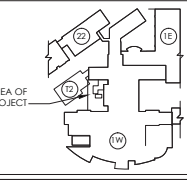
ONE LINE DIAGRAM - 13.2 KILOVOLT PRIMARY  
NOT TO SCALE

CONSTRUCTION DOCUMENTS - FULLY SPRINKLERED

E7.1

ISSUE 004 - BID	02/05/15
ISSUE 003 - CD OWNER REVIEW	10/21/14
ISSUE 002 - DD OWNER REVIEW	05/30/14
Revisions	Date

KEY PLAN



ARCHITECT/ENGINEERS:

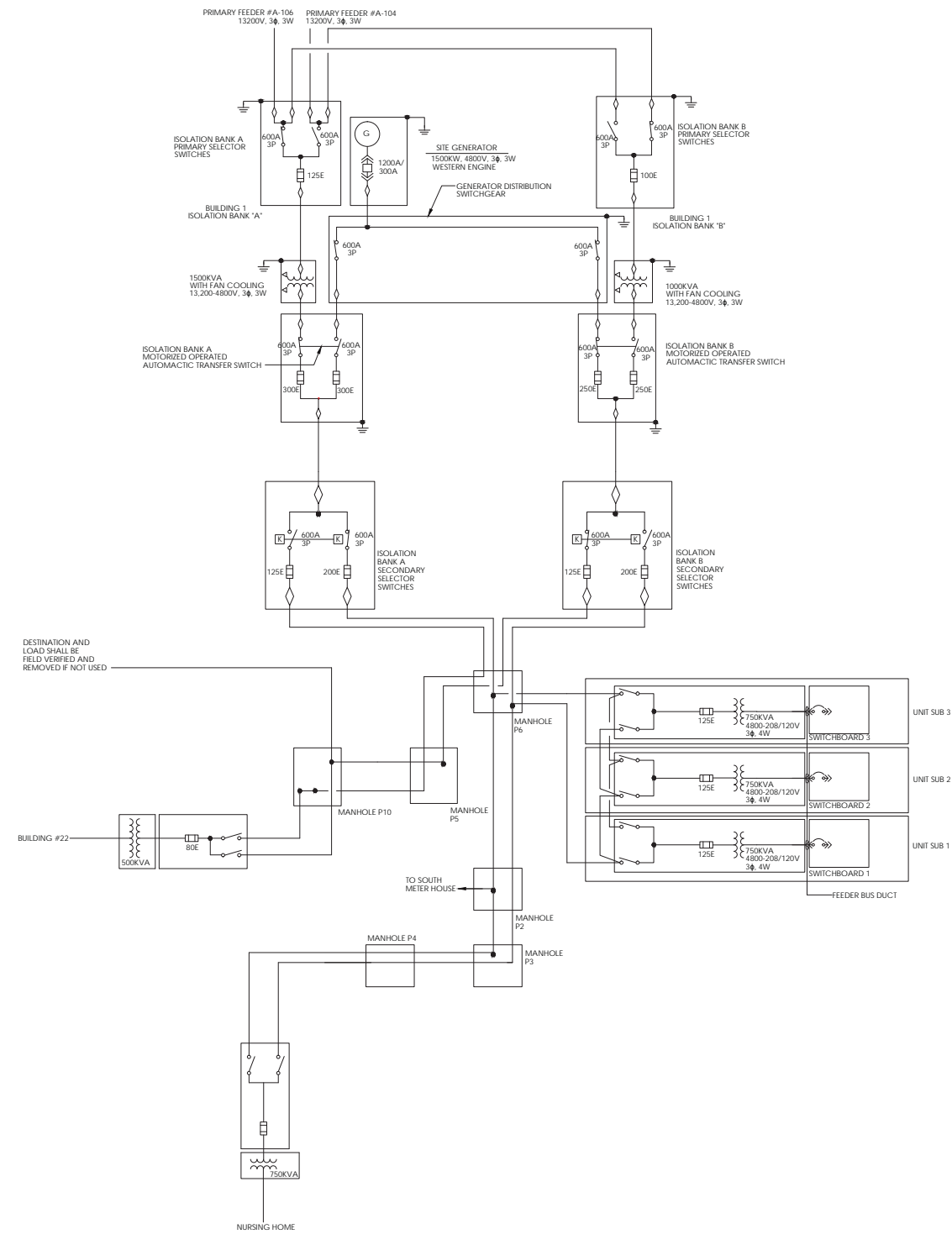


Drawing Title	ONE-LINE DIAGRAM - 13.2 KILOVOLT PRIMARY
Approved	P. GARLAND

Project Title	DEPARTMENT OF VETERANS AFFAIRS BUILD OUT CLINICS
Location	ANN ARBOR, MICHIGAN
Date	02-06-15
Checked	PMW
Drawn	PMW

Project Number	506-327
Building Number	1-W
Drawing Number	EP601
Dwg. 144 of 189	



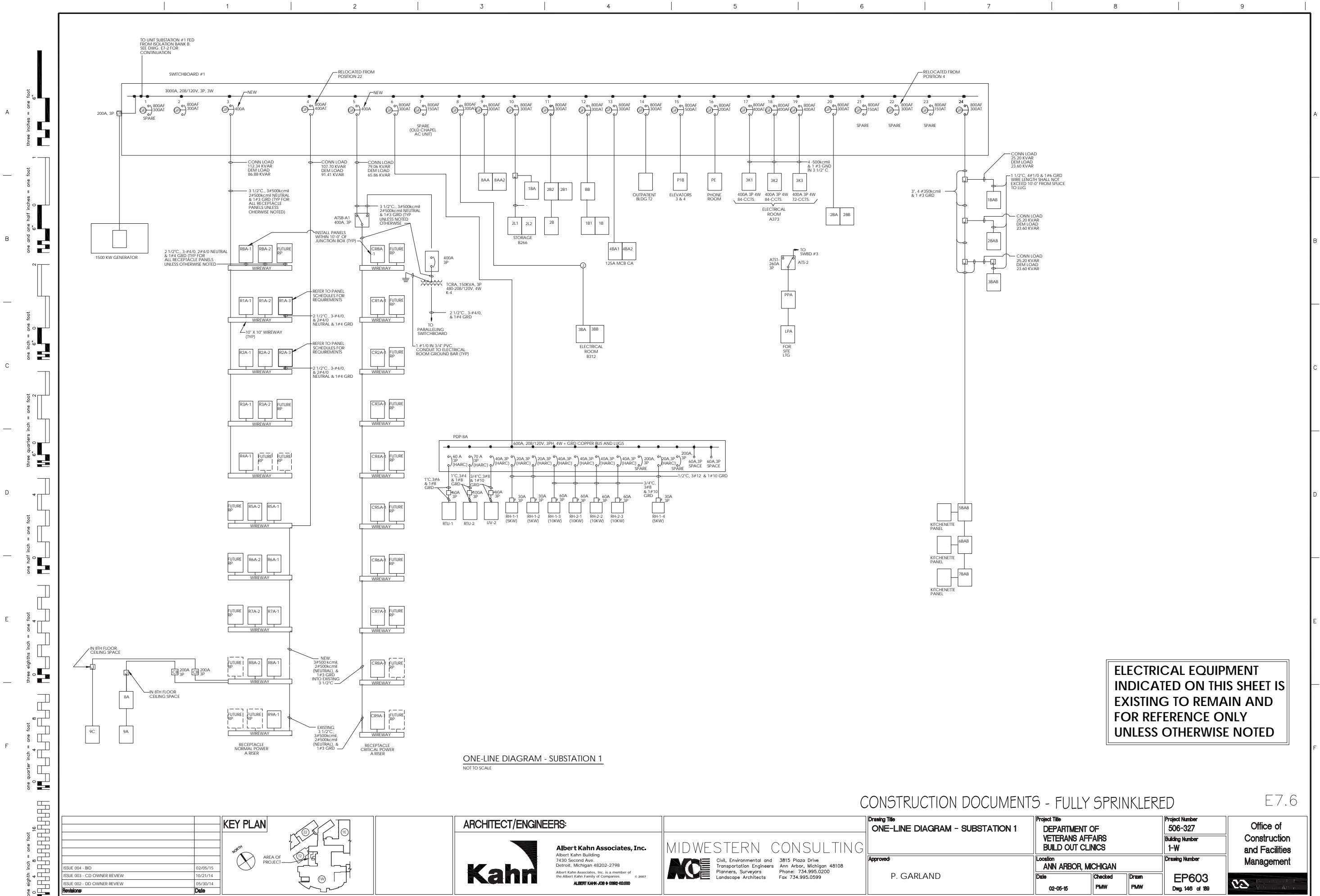


**ELECTRICAL EQUIPMENT  
INDICATED ON THIS SHEET IS  
EXISTING TO REMAIN AND  
FOR REFERENCE ONLY  
UNLESS OTHERWISE NOTED**

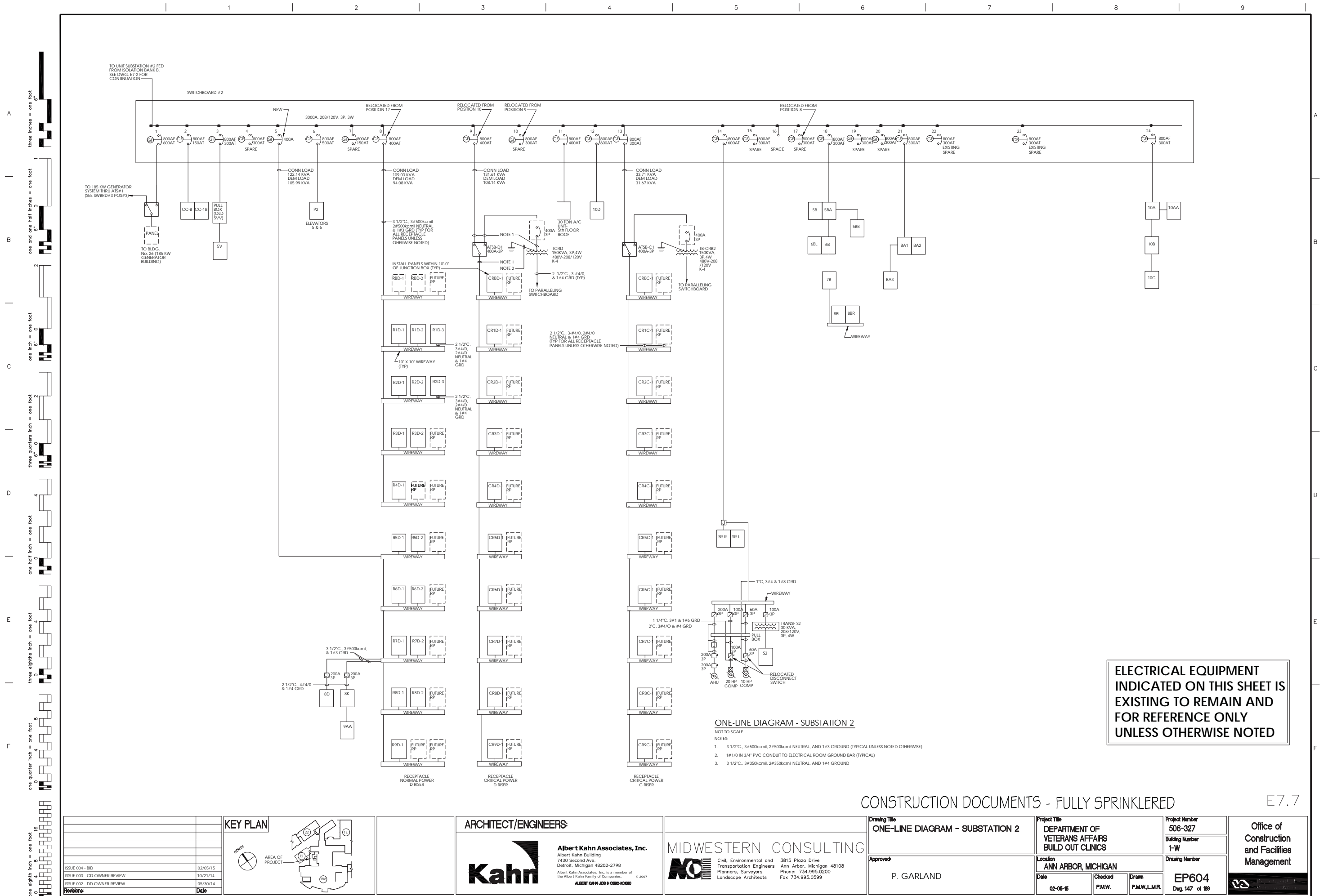
CONSTRUCTION DOCUMENTS - FULLY SPRINKLERED

E7.2

[illegible]

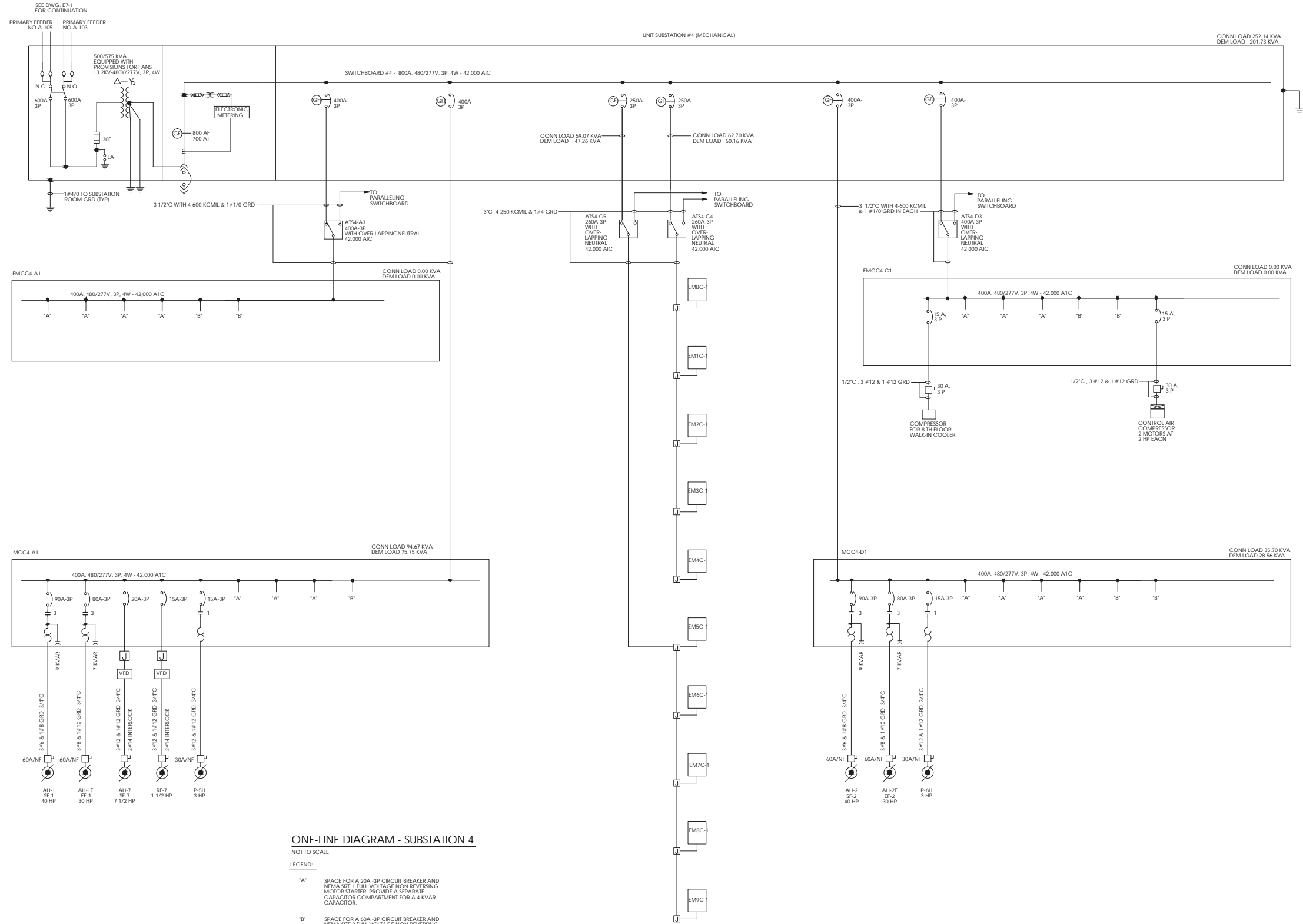








three inches = one foot  
one and one half inches = one foot  
one inch = one foot  
three quarters inch = one foot  
one half inch = one foot  
three eighths inch = one foot  
one quarter inch = one foot  
one eighth inch = one foot



#### ONE-LINE DIAGRAM - SUBSTATION 4

NOT TO SCALE

#### LEGEND:

- 'A' SPACE FOR A 20A-3P CIRCUIT BREAKER AND NEMA SIZE 1 FULL VOLTAGE NON REVERSING MOTOR STARTER. PROVIDE A SEPARATE CAPACITOR COMPARTMENT FOR A 4 KVAR CAPACITOR.
- 'B' SPACE FOR A 60A-3P CIRCUIT BREAKER AND NEMA SIZE 2 FULL VOLTAGE NON REVERSING MOTOR STARTER. PROVIDE A SEPARATE CAPACITOR COMPARTMENT FOR A 6 KVAR CAPACITOR.

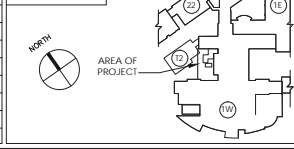
ELECTRICAL EQUIPMENT  
INDICATED ON THIS SHEET IS  
EXISTING TO REMAIN AND  
FOR REFERENCE ONLY  
UNLESS OTHERWISE NOTED

CONSTRUCTION DOCUMENTS - FULLY SPRINKLERED

E7.9

Revisions	Date
ISSUE 004 - BID	02/05/15
ISSUE 003 - CD OWNER REVIEW	10/21/14
ISSUE 002 - DD OWNER REVIEW	05/30/14

#### KEY PLAN



#### ARCHITECT/ENGINEERS:



Drawing Title	ONE-LINE DIAGRAM - SUBSTATION 4
Approved	P. GARLAND

Project Title	DEPARTMENT OF VETERANS AFFAIRS BUILD OUT CLINICS
Location	ANN ARBOR, MICHIGAN
Date	02-05-15
Checked	FMW
Drawn	FMW

Project Number	506-327
Building Number	1-W
Drawing Number	EP606
	Dwg. 149 of 189



