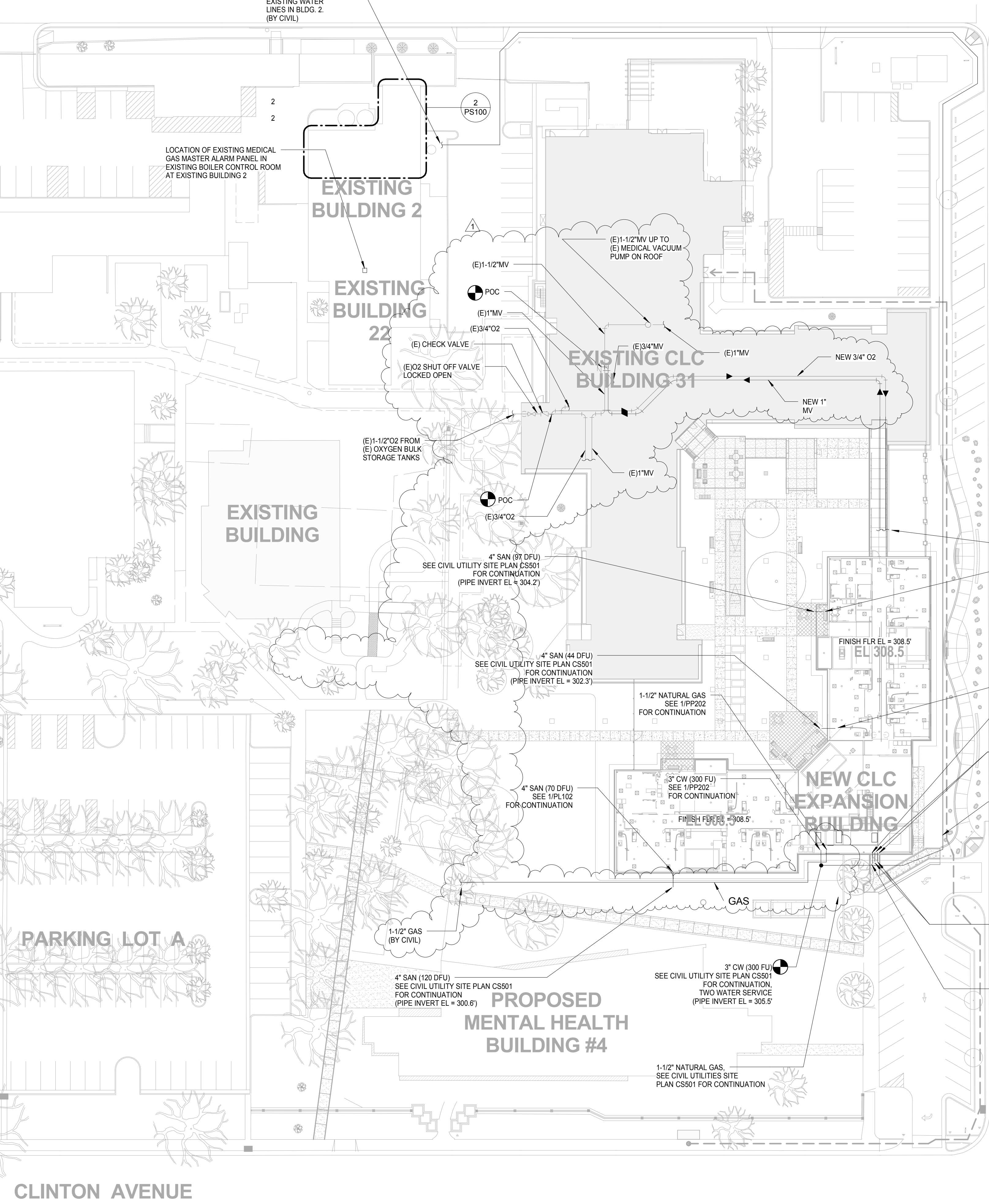


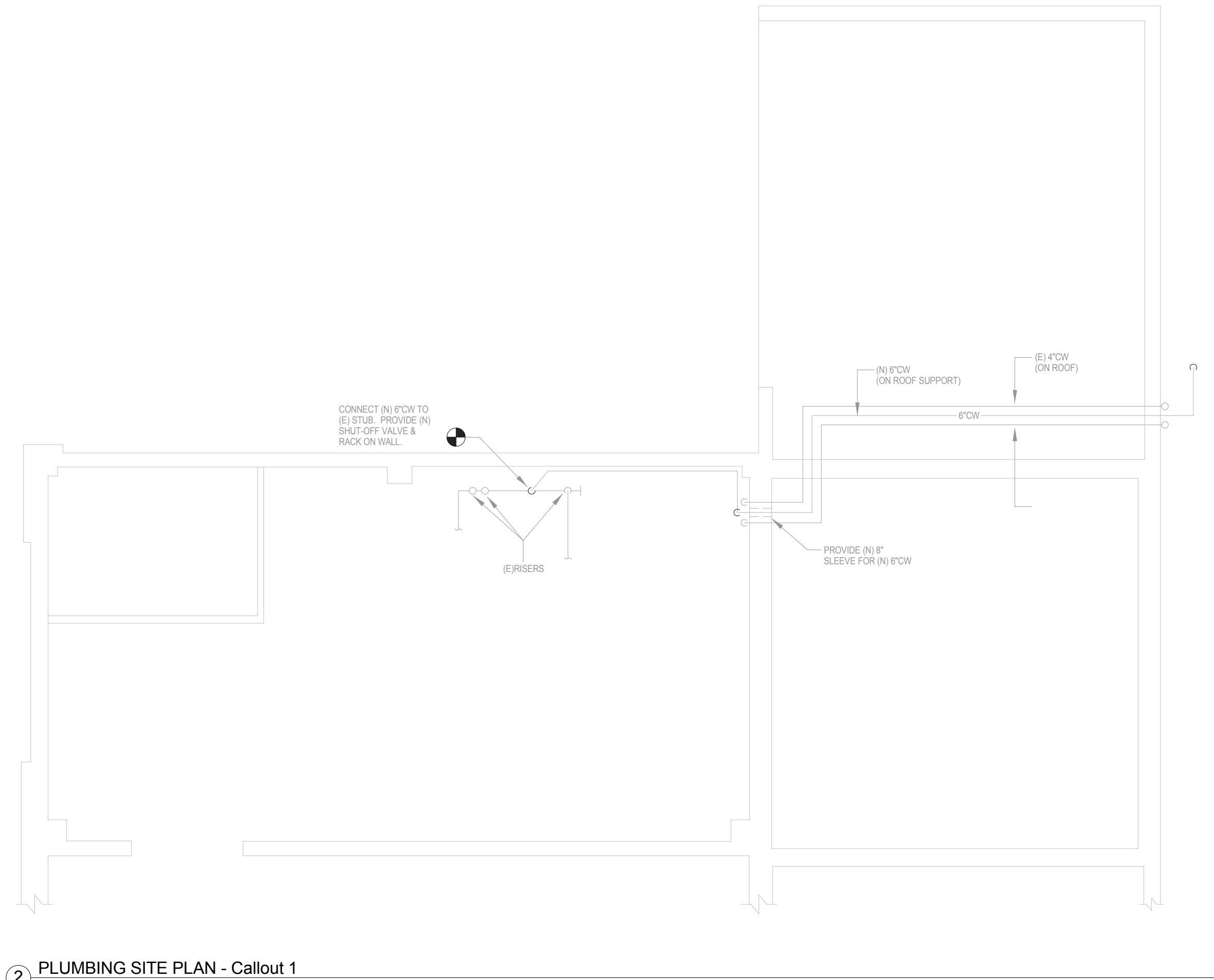
one eighth inch = one foot
one quarter inch = one foot
three eighths inch = one foot
one half inch = one foot
three quarters inch = one foot
one inch = one foot
one and one half inches = one foot
two inches = one foot
three inches = one foot
four inches = one foot
six inches = one foot
eight inches = one foot
ten inches = one foot
twelve inches = one foot
one foot = one foot

HARVARD AVENUE



1 PLUMBING SITE PLAN
1/32" = 1'-0"

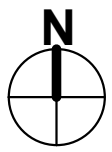
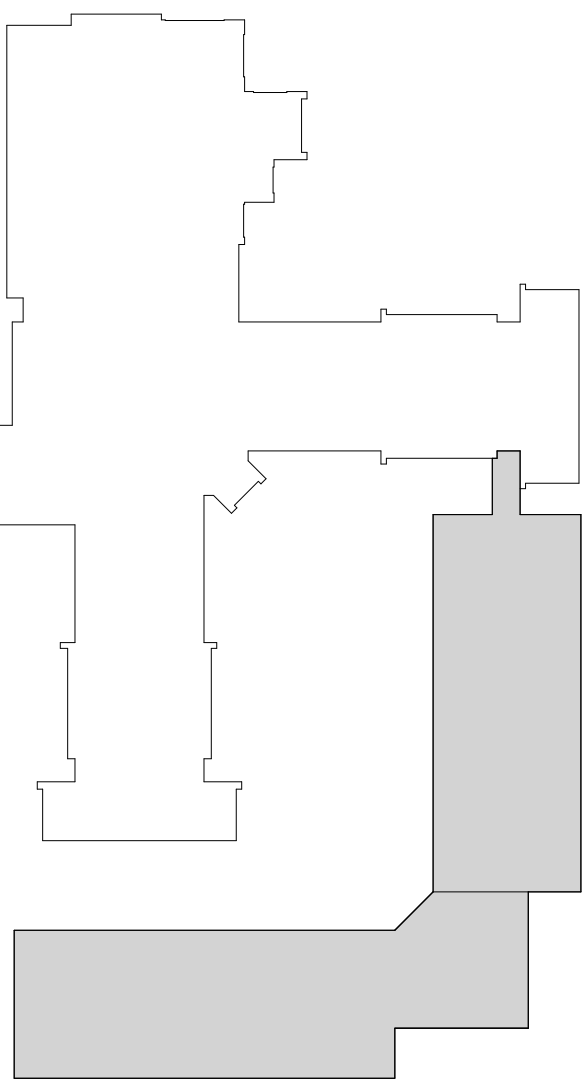
2 PLUMBING SITE PLAN - Callout 1
3/16" = 1'-0"



GENERAL SHEET NOTES

KEY NOTES

KEY PLAN



100% CONSTRUCTION DOCUMENTS
NOVEMBER 19, 2015

Revisions:	ADDENDUM NO.1	1/6/16
Date		

CONSULTANTS:

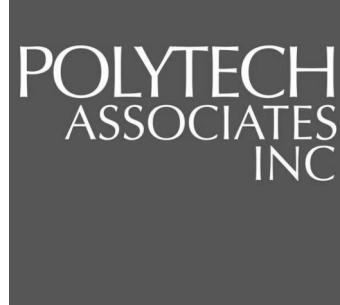


220 Montgomery Street, Suite 500
San Francisco, CA 94104
TEL: 415.532.3206
www.mazzetti.com

PROJECT NUMBER: 120-099



ARCHITECT/ENGINEERS:



POLYTECH ASSOCIATES INC.
235 Pine Street, 17th Floor
San Francisco, CA 94104
TEL (415) 397-3117
FAX (415) 397-1517

Drawing Title	PLUMBING SITE PLAN
Approved: Project Director	

Project Title	EXPAND COMMUNITY LIVING CENTER PHASE 1
Location	2615 E. CLINTON AVE. FRESNO, CA 93703-2223
Date	OCTOBER 29, 2015
Checked	MT
Drawn	NS/GL

Project Number	570-218
Building Number	31
Drawing Number	PS100
Dwg. of	

Office of
Construction
and Facilities
Management

