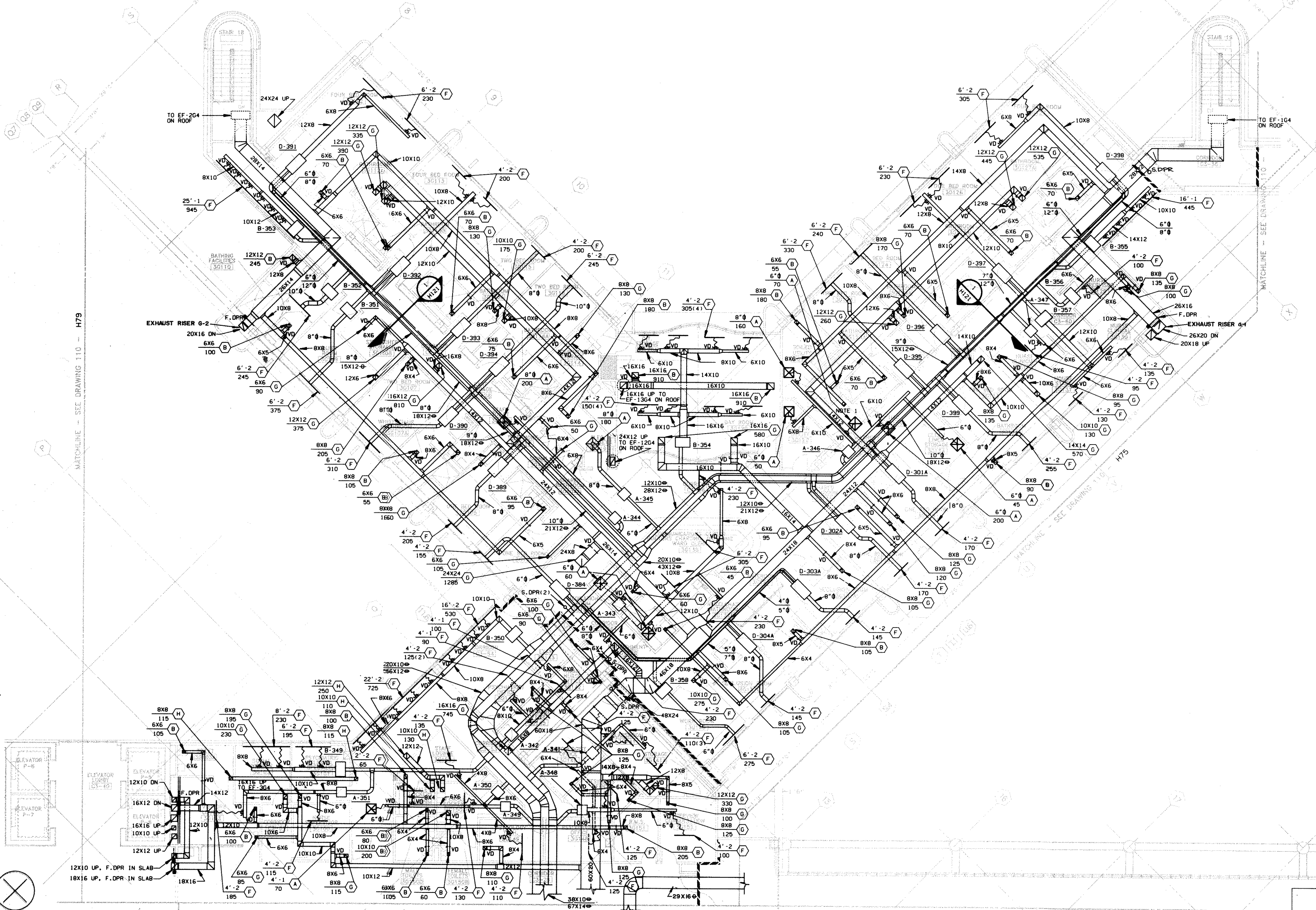


110-108	110-108
G(50)	110-88b
G(50)	110-88c
G(50)	110-88d
	110-88e
	110-88f
	110-88g
	110-88h
	110-88i
	110-88j
	110-88k
	110-88l
	110-88m
	110-88n
	110-88o
	110-88p
	110-88q
	110-88r
	110-88s
	110-88t
	110-88u
	110-88v
	110-88w
	110-88x
	110-88y
	110-88z



NOTES:

- 6" INDIRECT FITTING FROM 4" DRYER VENT. BALANCE 60 CFM WHEN DRYER IS NOT IN OPERATION.

		<b>PROJECT NORTH</b> 		<b>KEY PLAN</b> 		<b>JOVA DANIELS BUSBY</b> Architects Planners Interior Designers 1389 Peachtree Street, N.E. Atlanta, Georgia 30309 404.592.2990		<b>THE FALICK/KLEIN PARTNERSHIP, INC.</b> Associate Architect <b>ROBERT DOUGLASS ASSOCIATES, INC.</b> Health Services Consultant <b>ARMOUR &amp; CAPE, INC.</b> Structural/Civil Engineer <b>ROSSER, WHITE, HOBBS, DAVIDSON, McCLELLAN, KELLY, INC.</b> Mechanical/Electrical Engineer <b>EDAW ASSOCIATES, INC.</b> Landscape Architect		Drawing Title <b>THIRD FL - NW QUAD/R - HVAC PLAN</b> <b>PSYCHIATRIC NURSING UNIT 'H'</b> Approved Project Director 		Project Title <b>Lenwood Division Replacement Hospital</b> Building Number <b>110</b> Location <b>VAMC Augusta (L.D.), GA.</b>		Date <b>15 SEPT. 1986</b> Project No. <b>509-A89</b> Drawing No. <b>110-H77</b> Date <b>09/27/86</b>		<b>Veterans Administration</b>											
Revisions <table border="1"> <tr><td>1</td><td></td></tr> <tr><td>2</td><td></td></tr> <tr><td>3</td><td></td></tr> <tr><td>4</td><td></td></tr> <tr><td>5</td><td></td></tr> <tr><td>6</td><td></td></tr> <tr><td>7</td><td></td></tr> <tr><td>8</td><td></td></tr> <tr><td>9</td><td></td></tr> <tr><td>10</td><td></td></tr> </table>		1		2		3		4		5		6		7			8		9		10		Date 		Drawn CAD Checked JTA		Operator: ATL / REF: [031,131] NW3A / DWG: [033,132] M529
1																											
2																											
3																											
4																											
5																											
6																											
7																											
8																											
9																											
10																											