

GENERAL SHEET NOTES

- TYPICAL ACOUSTICAL CEILINGS AND GWB CEILINGS ARE AT 8'-0" AFF UNO.
- TYPICAL GWB SOFFITS ARE AT 7'-10" AFF UNO.
- SEE EXTERIOR WALL SECTIONS FOR SOFFIT HEIGHTS ALONG EXTERIOR WALLS.
- THE FOLLOWING ROOMS RECEIVE SPRAY FOAM INSULATION OVER CEILING: 422, 424, 426, 428, 430. INSTALL SPRAY FOAM INSULATION BETWEEN EXISTING JOISTS. SEE DETAIL B1/AE301.

SHEET KEYNOTES

- 7'-10" HIGH CEILING
- CURTAIN TRACK
- WINDOW SHADE
- SHOWER CURTAIN & TRACK
- CUBICLE CURTAIN TRACK
- LIGHT - SEE ELEC DWGS. PLASTIC LAMINATE CEILING TO HAVE TIGHT FIT TO FIXTURE AND STILL ALLOW SERVICING OF FIXTURE. RADIUS OF OPENING TO BE VERIFIED WITH FIXTURE.
- GWB SOFFIT
- ACOUSTICAL CEILING PANELS AND GRID
- LIGHT FIXTURE - SEE ELECTRICAL DRAWINGS
- FRT MDF WITH PLASTIC LAMINATE VENEER.
- EXISTING COLUMN

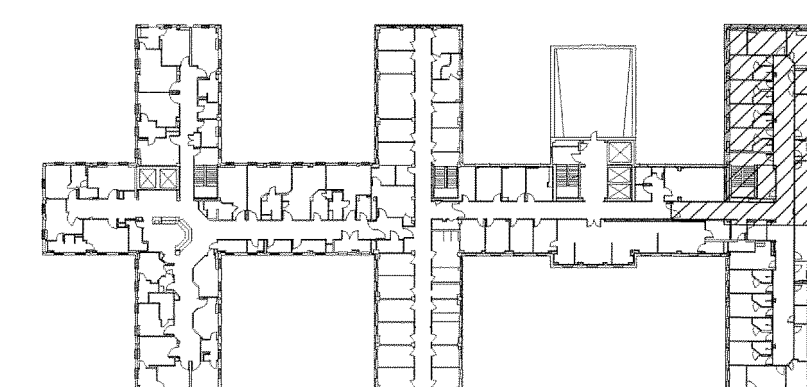
RCP SYMBOL LEGEND

- EXIT SIGN - WALL MOUNT/ CEILING MOUNT
- ACOUSTICAL CEILING SUSPENSION GRID
- PAINTED GWB CEILING / SOFFIT
- PLASTIC LAMINATE CEILING / SOFFIT
- 2'X4' LIGHT - SEE ELECTRICAL DWGS
- 2'X2' LIGHT - SEE ELECTRICAL DWGS
- CAN LIGHT - SEE ELEC DWGS
- OCCUPANCY SENSOR - SEE ELEC DWGS
- NURSE CALL ZONE - SEE ELEC DWGS
- NURSE CALL DOME - SEE ELEC DWGS
- SPEAKER - SEE ELEC DWGS
- SMOKE DETECTOR - SEE ELEC DWGS
- CCTV CAMERA - SEE ELEC DWGS
- RADIANT PANEL - SEE MECH DWGS
- SUPPLY DIFFUSER - SEE MECH DWGS
- RETURN - SEE MECH DWGS
- PLAM GRAIN DIRECTION
- EXHAUST - SEE MECH DWGS
- ACCESS PANEL (PAINTED)

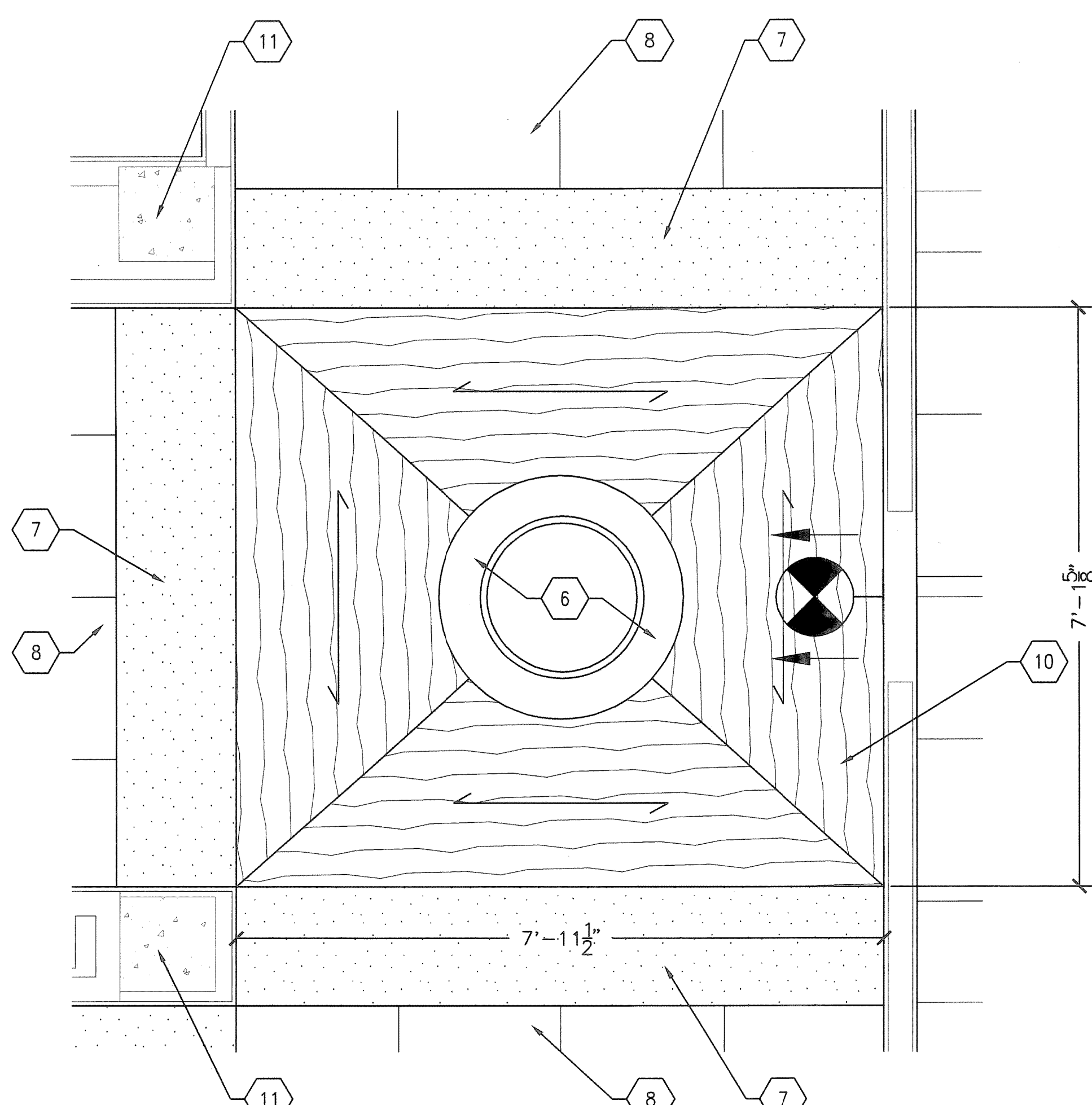
SYMBOLS LEGEND

- EXISTING WALL, DOOR, WINDOW, MILLWORK, FIXTURE OR OTHER FIXTURE OR ASSEMBLY TO BE REMOVED.
- EXISTING WALL, DOOR, WINDOW, MILLWORK, FIXTURE OR OTHER FIXTURE OR ASSEMBLY TO REMAIN.
- NEW WALL
- 2-HOUR RATED FIRE BARRIER
- 1-HOUR RATED FIRE BARRIER
- SMOKE-TIGHT WALL
- AREA OF WORK
- NO PIPING OR DUCTWORK SHALL BE ROUTED THROUGH ELECTRICAL AND/OR DATA ROOMS.
- EXISTING CONCRETE COLUMN

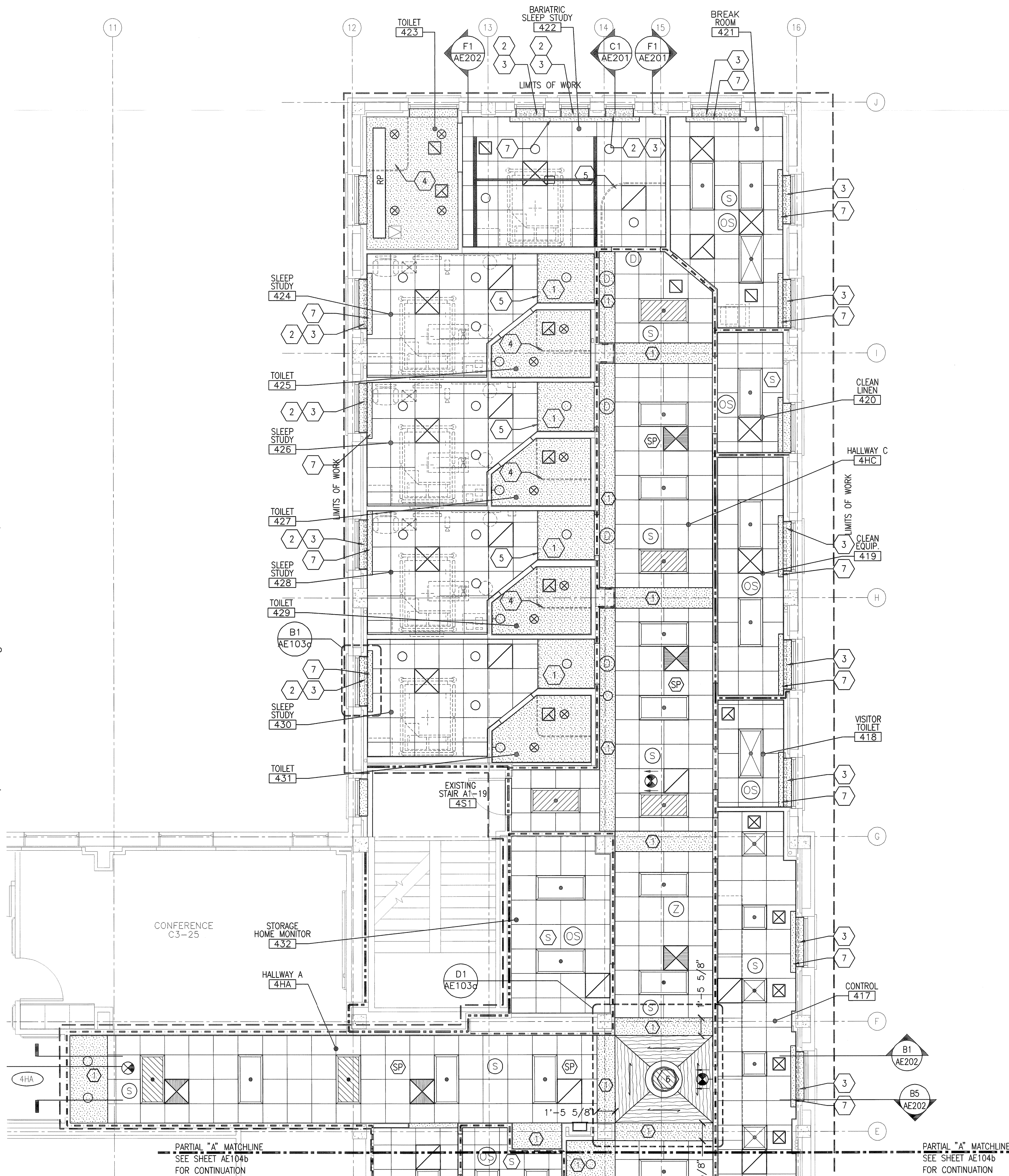
KEYPLAN



B1 ENLARGED CEILING DETAIL
SCALE: 1" = 1'-0"

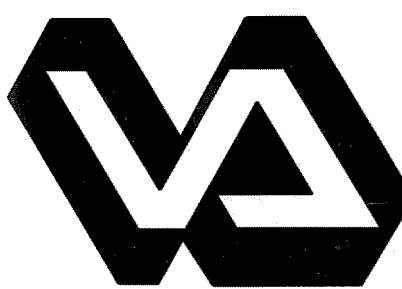


D1 ENLARGED CEILING DETAIL
SCALE: 3/4" = 1'-0"

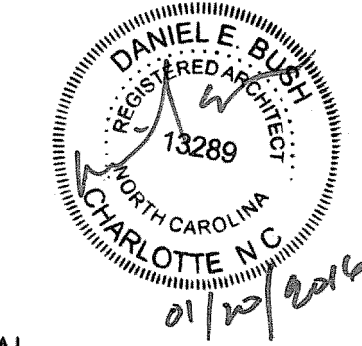


F4 4TH FLOOR - REFLECTED CEILING PLAN - PARTIAL A
SCALE: 1/4" = 1'-0"

REVISION NO.	REVISION DESCRIPTION
1	REVISION 1
2	
3	
4	
5	
6	
7	
8	
9	
10	
11	
12	
13	
14	
15	
16	



Department of Veterans Affairs
Create a Pulmonary Area
with Sleep Labs
2300 Ramsey St.
Fayetteville, NC. 28301



Architect/Engineer Address
HARRELL
 DESIGN GROUP, P.C.
 8010 TOWER POINT DRIVE
 CHARLOTTE, NC 28227
 P 704.814.1330
 F 704.321.0833
 WWW.HARRELLDC.COM
 COPYRIGHT © 2015 HARRELL DESIGN GROUP, PC
 HDC PROJECT # 13008

Recommended Approvals:	
1. MEDICAL DIRECTOR	6. OPERATIONS SERVICE LINE MANAGER
2. ASSOCIATE DIRECTOR	7. INFECTION CONTROL MANAGER
3. CHIEF OF STAFF	8. SAFETY MANAGER
4. ASSOC. DIRECTOR	9. GENERAL ENGINEER
5. SERVICE LINE MGRS.	10. COR

Drawing Title
4TH FLOOR - REFLECTED CEILING PLAN - PARTIAL A
 FINAL SUBMISSION

Project Title
CREATE A PULMONARY AREA WITH SLEEP LABS
 Drawn
 Checked
 Building Number
 Reviewed
 AutoCAD File Name
 Const. Contract No.

Date
 11/13/2015
 Project Number
 565-13-111
 DRAWING No.
AE103a

