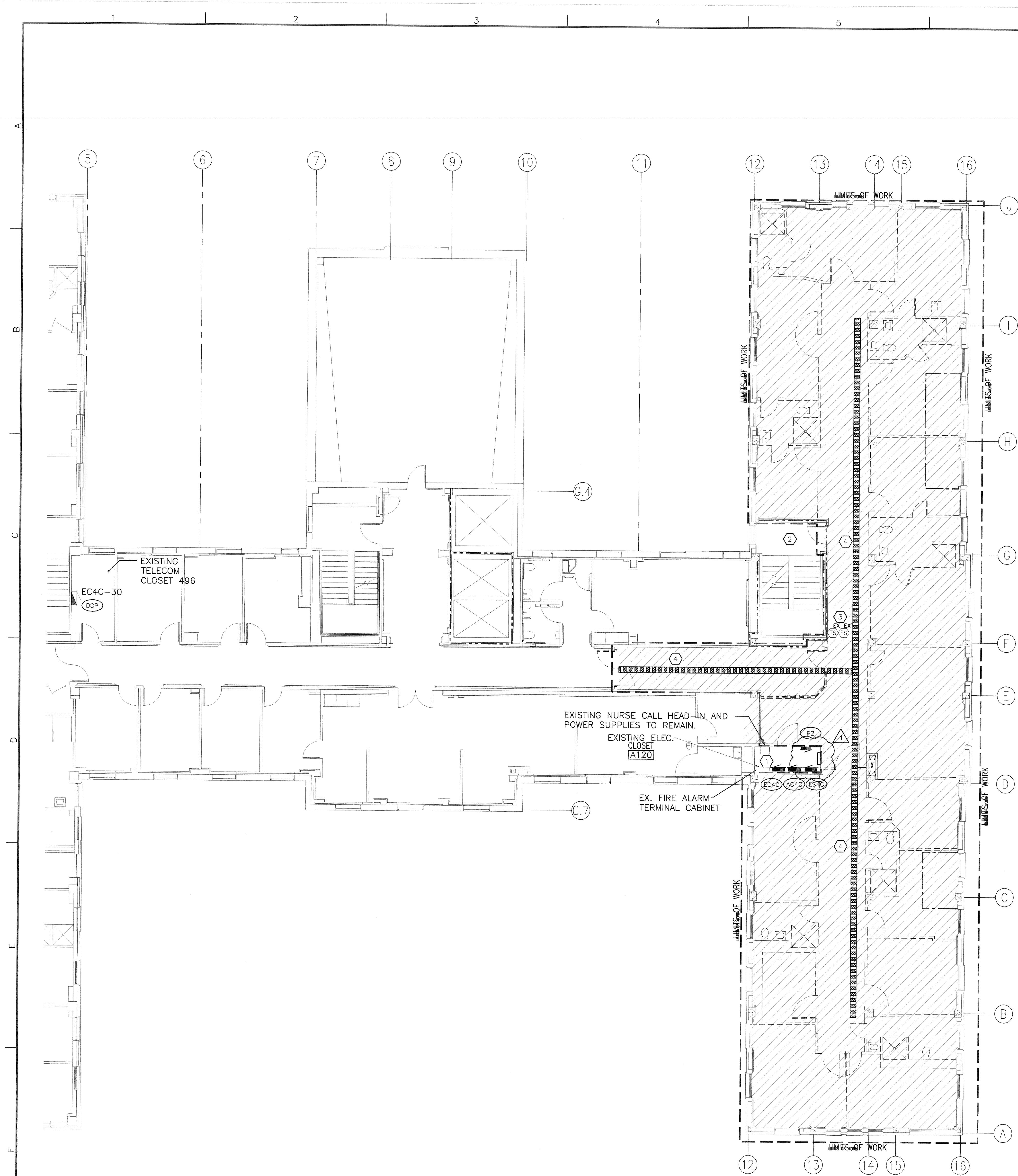


three inches = one foot
one and one half inches = one foot
one inch = one foot
three quarters inch = one foot
one half inch = one foot
three eighths inch = one foot
one quarter inch = one foot
one eighth inch = one foot



F1 4TH FLOOR - DEMOLITION FLOOR PLAN
SCALE: 1/8" = 1'-0"

- ### DEMOLITION NOTES
- A. PRIOR TO THE START OF ALL DEMOLITION WORK, THE CONTRACTOR SHALL TRACE AND IDENTIFY THE FEEDERS AND BRANCH CIRCUITS SERVING ALL ELECTRICAL EQUIPMENT, LIGHT FIXTURES, RECEPTACLES, FIXED EQUIPMENT, PANEL BOARDS, TRANSFORMERS, ETC. THE ELECTRICAL CONTRACTOR SHALL ALSO TRACE AND IDENTIFY ALL FEEDERS AND CIRCUITS SERVING ALL AREAS ADJACENT TO INDICATED AREAS OF DEMOLITION TO CONFIRM CIRCUITS SERVING BOTH NEW WORK AREA AND NON-RENOVATED AREA. A REPORT OF THIS TRACING WITH MARKED-UP DRAWINGS SHALL BE PROVIDED TO COR PRIOR TO START OF DEMOLITION. IF THIS REPORT IS NOT PROVIDED TO COR PRIOR TO THE START OF DEMOLITION WORK, CONTRACTOR SHALL BE RESPONSIBLE FOR ALL COSTS FOR ANY ADDITIONAL BREAKER CIRCUITS, FEEDERS, PANELBOARDS, ETC. REQUIRED TO SERVE NEW OR EXISTING RECONNECTED LOADS REQUIRED ADDITIONAL WORK NOT SHOWN ON DRAWINGS.
- B. ELECTRICAL CONTRACTOR SHALL REMOVE ALL CEILING AND WALL MOUNTED DEVICES, SYSTEMS, AND ASSOCIATED CIRCUITRY AND CONDUIT WITHIN THE AREA TO BE DEMOLISHED OR AS REQUIRED TO FACILITATE NEW CONSTRUCTION UNLESS OTHERWISE INDICATED. CONDUCTORS AND CONDUIT SHALL BE REMOVED BACK TO SOURCE. FOR CONDUIT AND CONDUCTORS BEING REMOVED BACK TO ELECTRICAL PANELS, REMOVE CONDUCTORS COMPLETELY AND REMOVE CONDUIT BACK TO CEILING SPACE DIRECTLY ABOVE PANEL AND CAP. ABANDONED CIRCUIT BREAKERS SHALL BE TURNED OFF AND LABELED AS SPARE.
- C. ASSOCIATED CIRCUITRY INCLUDES CONDUIT, CONDUCTORS, BOXES, WIRING DEVICES, COVER PLATES, LAMPS, FIXTURES, WIREWAYS, SWITCHES, STARTERS, ETC. WHICH ARE ASSOCIATED WITH THE ITEM TO BE REMOVED.
- D. THE OVERCURRENT/PROTECTIVE DEVICES SHALL REMAIN AS AN INTEGRAL PART OF THE EXISTING PANEL OR SWITCHBOARD, LABEL AS SPARE OR USE FOR NEW CIRCUITS AS REQUIRED. UPDATE PANELBOARD DIRECTORY AS NECESSARY TO SHOW ALL CHANGES IN PANELBOARD LOAD.
- E. WHERE CONDUIT, ASSOCIATED WITH AN ITEM SHOWN TO BE REMOVED, IS IN AN INACCESSIBLE AREA SUCH AS ENCASED IN CONCRETE, ABANDON INACCESSIBLE CONDUIT IN PLACE AND CAP OR SEAL BOTH ENDS.
- F. WHERE SUCH INACCESSIBLE CONDUIT ENDS OR MUST BE TERMINATED IN FINISHED SPACE, REMOVE THE CONDUIT OR BOX TO BELOW THE FINISHED SURFACE OF WALL, CEILING OR FLOOR. FILL VOID SHALL BE WITH NON-SHRINKING GROUT AND FINISH TO MATCH ADJOINING SURFACES.
- G. WHERE ONLY A PORTION OF A CIRCUIT'S LOAD IS SCHEDULED TO BE REMOVED, REMOVE ONLY THAT PORTION ASSOCIATED WITH THE DEMOLISHED DEVICE TO A POINT WHERE THE REMAINING LOAD IS ACTIVE AND MAINTAINED IN A GOOD OPERATING CONDITION. ALL DEVICES REMAINING SHALL BE RECONNECTED TO EXISTING CIRCUIT AS REQUIRED.
- H. WHERE EXTENSION OF AN EXISTING CIRCUIT IS REQUIRED, RUN CONDUIT AND WIRE CONCEALED FROM THE ITEM'S EXISTING LOCATION TO ITS NEW LOCATION. EXISTING DEVICES TO REMAIN SHALL BE RE-FED AS REQUIRED TO MAINTAIN OPERATION.
- I. REMOVE ALL CONDUIT, WIRING, DEVICES, EQUIPMENT AND ANY OTHER ELECTRICAL APPURTENANCES RENDERED USELESS AS A RESULT OF DEMOLITION OR FOUND TO BE ABANDONED DURING CONSTRUCTION. REMOVAL OF ABANDONED AND USELESS WIRING SHALL BE BACK TO THE SOURCE, EVEN IF OUTSIDE LIMITS OF CONSTRUCTION. REMOVE CONDUCTORS COMPLETELY AND REMOVE CONDUIT BACK TO CEILING SPACE DIRECTLY ABOVE PANEL AND CAP.
- J. CONTRACTOR SHALL PATCH AND/OR FIRE STOP ALL VOIDS IN WALLS/FLOORS LEFT OVER FROM OR FOUND DURING THE DEMOLITION PHASE AS REQUIRED TO MAINTAIN ORIGINAL BUILDING RATING ASSEMBLIES.
- K. NOTE THAT THE FLOORS ABOVE AND BELOW IN THIS BUILDING SHALL REMAIN IN OPERATION DURING THIS RENOVATION. CONTRACTOR SHALL COOPERATE FULLY WITH THE ADMINISTRATION IN ORDER TO CAUSE AS LITTLE DISRUPTION AS POSSIBLE TO THE DAILY FUNCTIONING OF THE FACILITY, AND TO MAINTAIN THE COMFORT AND SAFETY OF ALL PERSONNEL AND STAFF.
- L. ANY EXISTING CONDUIT AND WIRING SYSTEM DISCOVERED DURING DEMOLITION AND NOT PRESENTLY IN USE SHALL BE REMOVED BACK TO SOURCE.
- M. CONTRACTOR SHALL REMOVE COMPLETE ALL SYSTEMS CABLING RELATED TO THE PROJECT AREA FROM DEVICE TO POINT OF CONNECTION (E.G. PATCH PANEL IN TELE-COMMUNICATIONS CLOSET, ETC). ADDITIONALLY, CABLING DISCOVERED DURING DEMOLITION WHICH IS FOUND TO BE ABANDONED OR OTHERWISE NO LONGER IN SERVICE SHALL BE REMOVED COMPLETE. EXISTING SYSTEMS TO REMAIN SHALL BE ROUTED IN NEW CABLE TRAY AS MUCH AS PRACTICAL. THE INTENT OF THIS MANDATE IS TO PROVIDE AN ORGANIZED AND EASILY MAINTAINABLE CABLING SYSTEM AS POSSIBLE FOR THE OWNER.

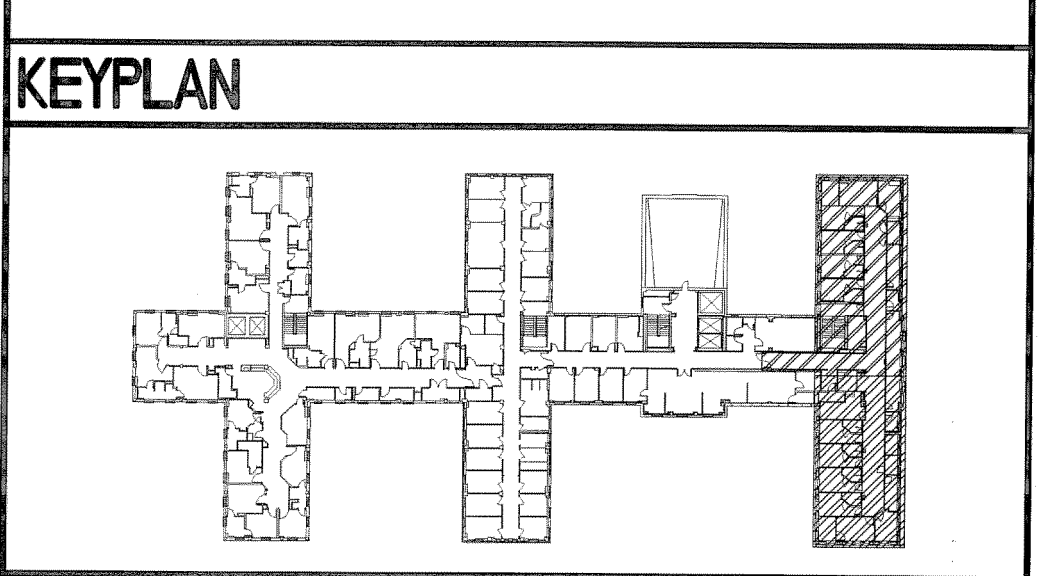
- ### GENERAL SHEET NOTES
- A. REFER TO ALL PHASING SHEETS. GENERAL CONTRACTOR SHALL ENSURE THAT ALL CONTRACTORS ARE RESPONSIBLE FOR COORDINATION ACROSS ENTIRE SET OF CONSTRUCTION DOCUMENTS.
- B. COORDINATE LIMITS AND PROVISIONS OF DEMOLITION WITH ARCHITECTURAL DEMOLITION PLANS AND NOTES.
- C. THIS PROJECT INVOLVES WORK IN EXISTING PORTIONS OF THE FACILITY. EXISTING BRANCH CIRCUITS, COMMUNICATIONS, RACEWAYS, ETC., WHICH ARE DISRUPTED BY THIS PROJECT SHALL BE REROUTED AND/OR RE-FED FROM A NEW SOURCE AS REQUIRED TO MAINTAIN THEM IN FULL AND PERMANENT SERVICE.
- D. REMOVE ALL LIGHTS, RECEPTACLES, TELEPHONE/DATA, COMMUNICATIONS, FIRE ALARM NURSE CALL AND ELECTRICAL CONNECTIONS TO EQUIPMENT IN THE HATCHED AREAS. SEE DEMOLITION NOTES FOR ADDITIONAL INFORMATION.
- E. WRAP, BOX AND STORE FIRE ALARM AND NURSE CALL DEVICES FOR REUSE WHERE NOTED. WHERE NOT REUSED, TURN OVER TO OWNER.
- F. MAINTAIN AND RESTORE, IF INTERRUPTED, ALL CONDUITS AND CONDUCTORS PASSING THROUGH RENOVATED AREAS AND SERVICING UNDISTURBED AREAS.
- G. REFER TO DEMOLITION NOTES, THIS SHEET FOR ADDITIONAL INFORMATION.
- H. REMOVE ELECTRICAL CONNECTIONS TO MECHANICAL EQUIPMENT SERVING THE DEMOLITION AREA BACK TO ITS SOURCE. SEE DEMOLITION NOTES FOR ADDITIONAL INFORMATION.

- ### SHEET KEYNOTES
1. EXISTING PANELS, LIGHTING AND DEVICES IN ELECTRICAL ROOM TO REMAIN UNLESS OTHERWISE NOTED.
2. EXISTING LIGHTING AND SWITCHING IN STAIRWELL TO REMAIN. EXTEND EXISTING CIRCUIT TO NEW LIGHT FIXTURE. SEE SHEET EL101A FOR NEW FIXTURE LOCATION.
3. EXISTING TAMPER AND FLOW SWITCHES TO REMAIN.
4. EXISTING CABLE TRAY TO BE REMOVED IN ITS ENTIRETY INCLUDING ALL HANGERS, SUPPORTS, ETC. ALL CONTENTS OF THE TRAY SHALL BE EITHER DEMOLISHED OR RELOCATED TO THE NEW CABLE TRAY AS REQUIRED. SEE DEMOLITION NOTES FOR MORE INFORMATION.

COORDINATION DRAWINGS

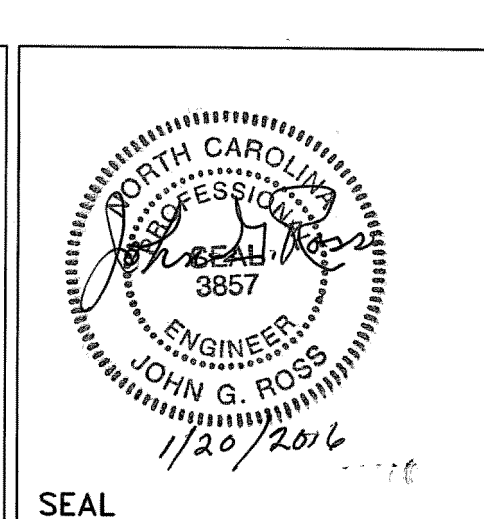
SEE COVER SHEET FOR COORDINATION NOTES.

- ### SYMBOLS LEGEND
- EXISTING WALL, DOOR, WINDOW, MILLWORK, FIXTURE OR OTHER FIXTURE OR ASSEMBLY TO BE REMOVED.
- EXISTING WALL, DOOR, WINDOW, MILLWORK, FIXTURE OR OTHER FIXTURE OR ASSEMBLY TO REMAIN.
- NEW WALL
- 2-HOUR RATED FIRE BARRIER
- 1-HOUR RATED FIRE BARRIER
- SMOKE-TIGHT WALL
- AREA OF WORK
- NO PIPING OR DUCTWORK SHALL BE ROUTED THROUGH ELECTRICAL AND/OR DATA ROOMS.
- EXISTING CONCRETE COLUMN



REVISION NO.	REVISION DESCRIPTION	By	Date
1	REVISION 1	01/20/2016	By Date

Department of Veterans Affairs
Create a Pulmonary Area with Sleep Labs
2300 Ramsey St.
Fayetteville, NC. 28301



Architect/Engineer Address

HARRELL
DESIGN GROUP, P.C.
formerly HARRELL, SALTRICK & HOPPER, PC

8016 TOWER POINT DRIVE
CHARLOTTE, NC 28227
P 704.814.1320
F 704.321.0833
WWW.HARRELLDG.COM

COPYRIGHT © 2015 HARRELL DESIGN GROUP, PC
HDC PROJECT # 13008

Recommended Approvals:	
1. MEDICAL DIRECTOR	6. OPERATIONS SERVICE LINE MANAGER
2. ASSOCIATE DIRECTOR	7. INFECTION CONTROL MANAGER
3. CHIEF OF STAFF	8. SAFETY MANAGER
4. ASSOC. DIRECTOR	9. GENERAL ENGINEER
5. SERVICE LINE MGRS.	10. COR

Drawing Title
4TH FLOOR - DEMOLITION FLOOR PLAN

FINAL SUBMISSION

Project Title
CREATE A PULMONARY AREA WITH SLEEP LABS

Drawn ELC
Checked [Signature]
Building Number 1
AutoCAD File Name
Const. Contract No.

Date 11/13/2015
Project Number 565-13-111
DRAWING No. ED101

Veterans Affairs