

# GENERAL SHEET NOTES

- REFER TO ALL PHASING SHEETS. GENERAL CONTRACTOR SHALL ENSURE THAT ALL CONTRACTORS ARE RESPONSIBLE FOR COORDINATION ACROSS ENTIRE SET OF CONSTRUCTION DOCUMENTS.
- REFER TO ARCHITECTURAL REFLECTED CEILING PLANS FOR EXACT LOCATION OF ALL CEILING FIXTURES.
- EMERGENCY EGRESS LIGHTING FIXTURES SHALL BE UNSWITCHED.

# SHEET KEYNOTES

- TIE NEW LIGHT FIXTURE TO EXISTING CIRCUIT AND SWITCHING IN STAIRWELL.
- REFER TO DETAILS C1/E501 AND B4/E501 FOR HEADWALL SCONCE LIGHT SWITCHING REQUIREMENTS.
- PROVIDE GENERATOR TRANSFER DEVICE (GTD) FOR SWITCHING INDICATED LIGHT FIXTURES.
- CONTROL ROOM AND WING "A" LIGHT SWITCHES. REFER TO DETAIL "C1" THIS SHEET FOR SWITCHES AND SWITCH ASSIGNMENTS.

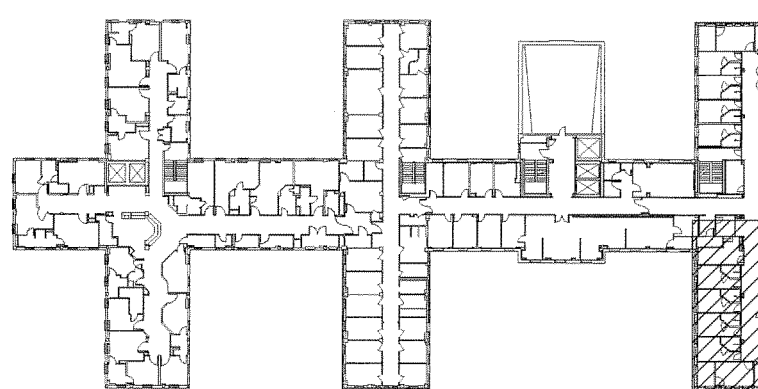
# COORDINATION DRAWINGS

SEE COVER SHEET FOR COORDINATION NOTES.

# SYMBOLS LEGEND

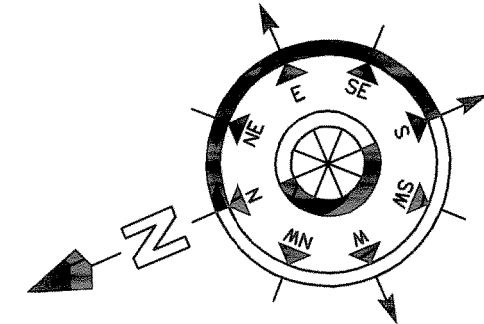
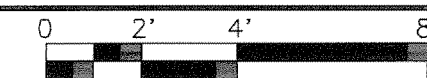
- EXISTING WALL, DOOR, WINDOW, MILLWORK, FIXTURE OR OTHER FIXTURE OR ASSEMBLY TO BE REMOVED.
- EXISTING WALL, DOOR, WINDOW, MILLWORK, FIXTURE OR OTHER FIXTURE OR ASSEMBLY TO REMAIN.
- NEW WALL
- 2-HOUR RATED FIRE BARRIER
- 1-HOUR RATED FIRE BARRIER
- SMOKE-TIGHT WALL
- AREA OF WORK
- NO PIPING OR DUCTWORK SHALL BE ROUTED THROUGH ELECTRICAL AND/OR DATA ROOMS.
- EXISTING CONCRETE COLUMN

# KEYPLAN



# F4 4TH FLOOR - LIGHTING PARTIAL - A FLOOR PLAN

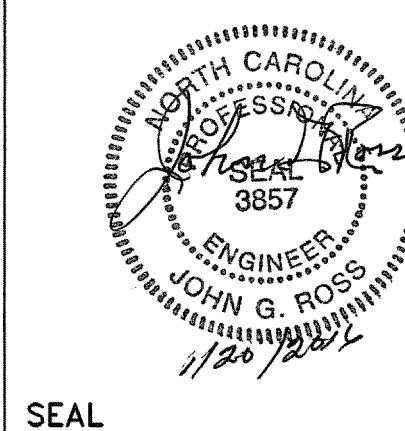
SCALE: 1/4" = 1'-0"



REVISION NO.	REVISION DESCRIPTION
1	REVISION 1
2	
3	
4	
5	
6	
7	
8	
9	
10	
11	
12	
13	
14	
15	
16	



Department of Veterans Affairs  
Create a Pulmonary Area  
with Sleep Labs  
2300 Ramsey St.  
Fayetteville, NC. 28301




Architect/Engineer Address  
**HARRELL**  
DESIGN GROUP, P.C.  
formerly HARRELL, SALTRICK & HOPPER, PC

8016 TOWER POINT DRIVE  
CHARLOTTE, NC 28227  
P 704.814.1320  
F 704.371.0633  
WWW.HARRELLDG.COM  
COPYRIGHT © 2015 HARRELL DESIGN GROUP, PC  
HDC PROJECT # 13008

Recommended Approvals:	
1. MEDICAL DIRECTOR	6. OPERATIONS SERVICE LINE MANAGER
2. ASSOCIATE DIRECTOR	7. INFECTION CONTROL MANAGER
3. CHIEF OF STAFF	8. SAFETY MANAGER
4. ASSOC. DIRECTOR	9. GENERAL ENGINEER
5. SERVICE LINE MGRS.	10. COR

Drawing Title <b>4TH FLOOR - LIGHTING PARTIAL - A FLOOR PLAN</b>
FINAL SUBMISSION

Project Title <b>CREATE A PULMONARY AREA WITH SLEEP LABS</b>		
Drawn ELC	Building Number 1	AutoCAD File Name
Checked	Reviewed 	Const. Contract No.

Date 11/13/2015
Project Number 565-13-111
DRAWING No. <b>EL101a</b>

