

GENERAL SHEET NOTES

- REFER TO ALL PHASING SHEETS. GENERAL CONTRACTOR SHALL ENSURE THAT ALL CONTRACTORS ARE RESPONSIBLE FOR COORDINATION ACROSS ENTIRE SET OF CONSTRUCTION DOCUMENTS.
- VOLTAGE DROP SHALL NOT EXCEED VA DESIGN MANUAL GUIDELINES. 3% MAXIMUM ON BRANCH CIRCUITS AND 2% MAXIMUM ON FEEDERS.
- ALL RECEPTACLES WITHIN 6'-0" OF SINK SHALL HAVE GFI PROTECTION.
- RELOCATE ANY UTILITIES THAT ARE TO REMAIN AS REQUIRED TO ALLOW INSTALLATION OF NEW WORK.

SHEET KEYNOTES

- EXISTING ELECTRICAL EQUIPMENT TO REMAIN, UNLESS OTHERWISE NOTED.
- CONFIRM TV OUTLET MOUNTING LOCATION AND HEIGHT WITH ARCHITECTURAL ELEVATIONS PRIOR TO ROUGH-IN. SEE SHEET E501 FOR MORE INFORMATION.
- MEDGAS PANEL LOCATION. CONNECT NEW 120V-1P, 20A CIRCUIT TO PANEL 'ES4C'.
- JUNCTION BOX ABOVE CEILING FOR 120V CONNECTION TO AUTOMATIC FAUCET CONTROLS. TRANSFORMER PROVIDED BY PLUMBING FIXTURE VENDOR AND SHALL BE BOX MOUNTED ABOVE ACCESSIBLE CEILING. CONTRACTOR SHALL MATCH VENDOR CONDUCTORS AND MAKE ALL FINAL CONNECTIONS. COORDINATE LOCATION WITH PLUMBING CONTRACTOR PRIOR TO ROUGH-IN.
- JUNCTION BOX ABOVE CEILING FOR 120V CONNECTION FOR MECHANICAL CONTROLS. COORDINATE LOCATION WITH MECHANICAL PRIOR TO ROUGH-IN.
- JUNCTION BOX FOR 120V CONNECTION FOR DOOR CONTROLS. CONTRACTOR SHALL COORDINATE DOOR CONNECTION WITH ARCHITECTURAL DOOR SCHEDULE.
- REFER TO DETAIL C1/E501 FOR HEADWALL RECEPTACLE CIRCUIT ASSIGNMENTS AND DEVICES. RECEPTACLES IN HEADWALL PROVIDED AND WIRED TO ABOVE CEILING BY HEADWALL PROVIDER.
- PROVIDE POWER ABOVE CEILING TO PATIENT LIFT EQUIPMENT.
- EXHAUST FAN ON PENTHOUSE FLOOR ABOVE. REFER TO SHEET MH102.
- JUNCTION BOX FOR 120 VOLT CONNECTION TO DOOR CONTROLS. DOOR INCLUDES AUTOMATIC DOOR OPERATOR AND WALL MOUNTED PUSH PADS.

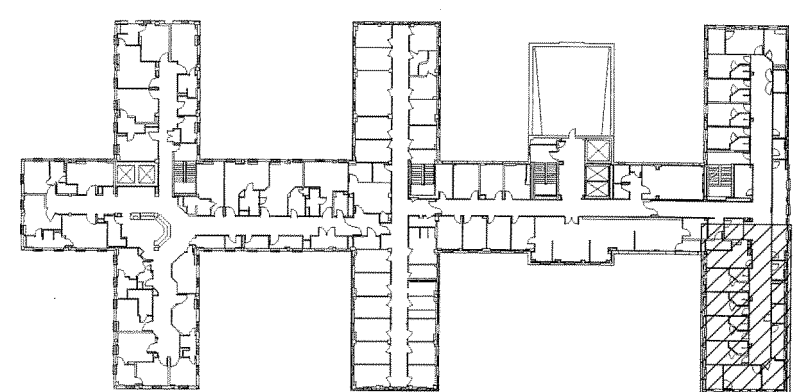
COORDINATION DRAWINGS

SEE COVER SHEET FOR COORDINATION NOTES.

SYMBOLS LEGEND

- EXISTING WALL, DOOR, WINDOW, MILLWORK, FIXTURE OR OTHER FIXTURE OR ASSEMBLY TO BE REMOVED.
- EXISTING WALL, DOOR, WINDOW, MILLWORK, FIXTURE OR OTHER FIXTURE OR ASSEMBLY TO REMAIN.
- NEW WALL
- 2-HOUR RATED FIRE BARRIER
- 1-HOUR RATED FIRE BARRIER
- SMOKE-TIGHT WALL
- AREA OF WORK
- NO PIPING OR DUCTWORK SHALL BE ROUTED THROUGH ELECTRICAL AND/OR DATA ROOMS.
- EXISTING CONCRETE COLUMN

KEYPLAN

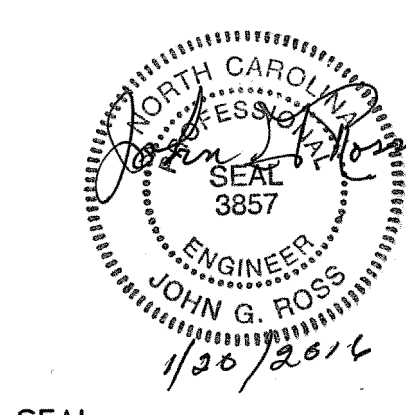


F3 4TH FLOOR - POWER PARTIAL - A FLOOR PLAN
SCALE: 1/4" = 1'-0"

REVISION NO.	REVISION DESCRIPTION
1	REVISION 1
2	
3	
4	
5	
6	
7	
8	
9	
10	
11	
12	
13	
14	
15	
16	



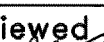
Department of Veterans Affairs
Create a Pulmonary Area
with Sleep Labs
2300 Ramsey St.
Fayetteville, NC. 28301



Architect/Engineer Address
HARRELL
DESIGN GROUP, P.C.
8016 TOWER POINT DRIVE
CHARLOTTE, NC 28227
P 704.814.1320
F 704.321.0833
WWW.HARRELLDC.COM
COPYRIGHT © 2015 HARRELL DESIGN GROUP, PC
HDC PROJECT # 13008

Recommended Approvals:	
1. MEDICAL DIRECTOR	6. OPERATIONS SERVICE LINE MANAGER
2. ASSOCIATE DIRECTOR	7. INFECTION CONTROL MANAGER
3. CHIEF OF STAFF	8. SAFETY MANAGER
4. ASSOC. DIRECTOR	9. GENERAL ENGINEER
5. SERVICE LINE MGRS.	10. COR

Drawing Title 4TH FLOOR - POWER PARTIAL - A FLOOR PLAN
FINAL SUBMISSION

Project Title		
CREATE A PULMONARY AREA WITH SLEEP LABS		
Drawn ELC	Building Number 1	AutoCAD File Name
Checked	Reviewed 	Const. Contract

Date 11/13/2015
Project Number 565-13-111
DRAWING No. EP101a

