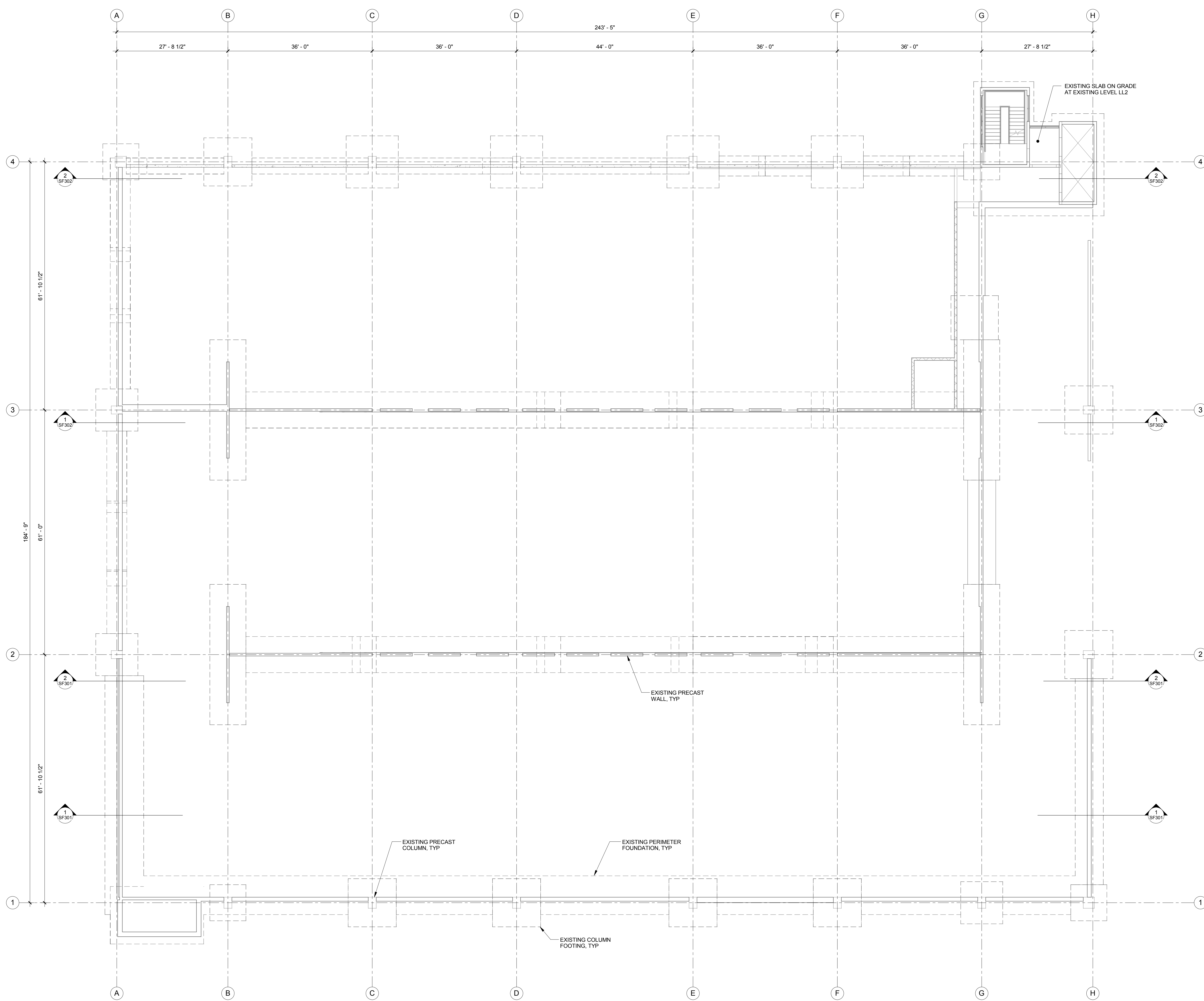
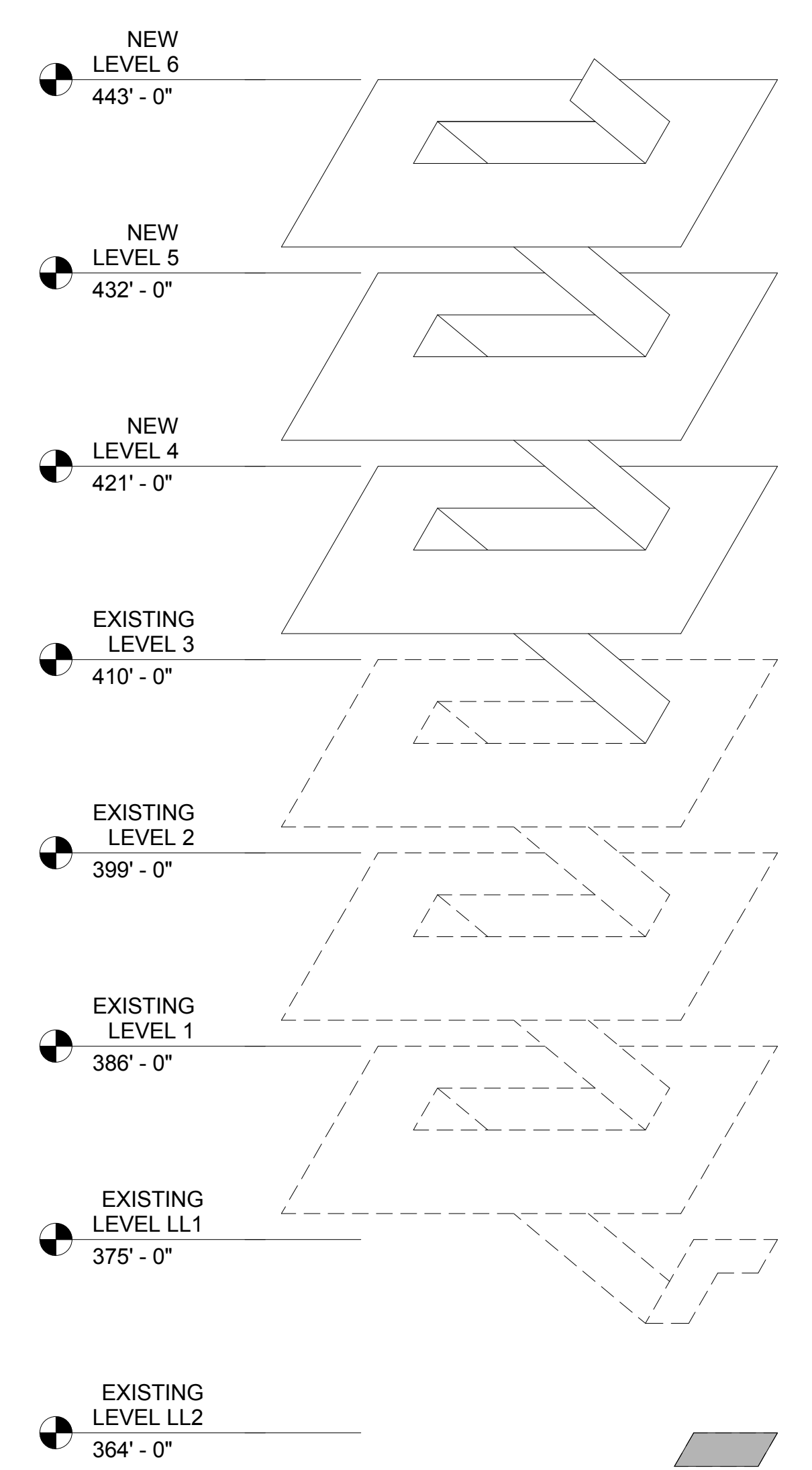


three inches = one foot  
one and one half inches = one foot  
one inch = one foot  
three quarters inch = one foot  
one half inch = one foot  
three eighths inch = one foot  
one quarter inch = one foot  
one eighth inch = one foot



- PLAN NOTES:
1. ELEVATIONS LISTED ON THE ISOMETRIC AND PLAN BELOW ARE DESIGN ELEVATIONS GIVEN FOR THE EXISTING STRUCTURE ON THE ORIGINAL CONSTRUCTION DOCUMENTS. THE CONTRACTOR IS RESPONSIBLE FOR FIELD VERIFYING, TO THE EXTENT REQUIRED, SPOT ELEVATIONS THROUGHOUT THE STRUCTURE. RELATIVE FLOOR-TO-FLOOR HEIGHTS MUST BE MAINTAINED AS SHOWN.
  2. REFER TO ARCHITECTURAL DEMOLITION PLAN FOR ALL REQUIRED DEMOLITION PRIOR TO VERTICAL EXPANSION.



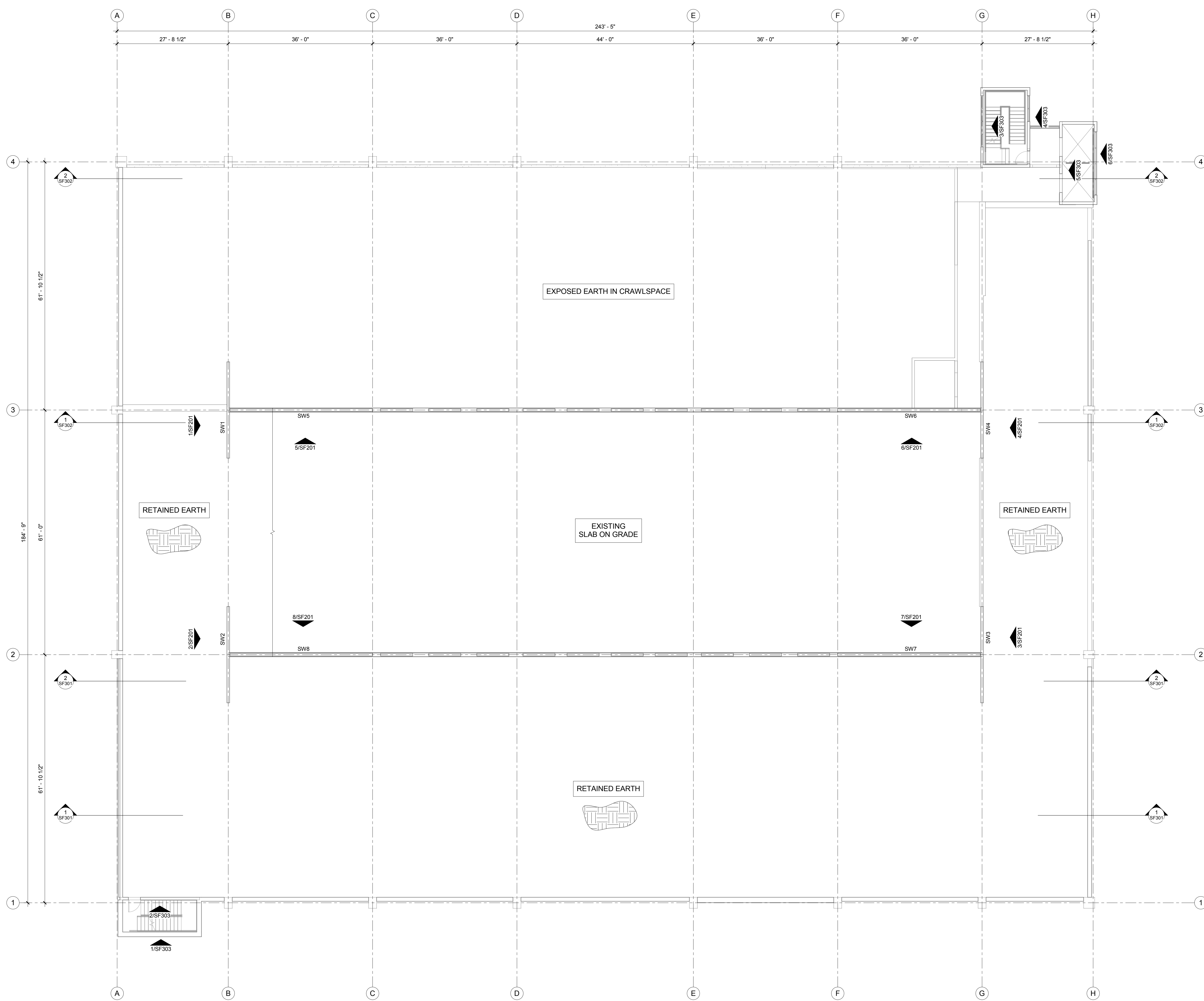
1 FOUNDATION PLAN / EXISTING LEVEL LL2  
SB101 3/32" = 1'-0"

ISOMETRIC

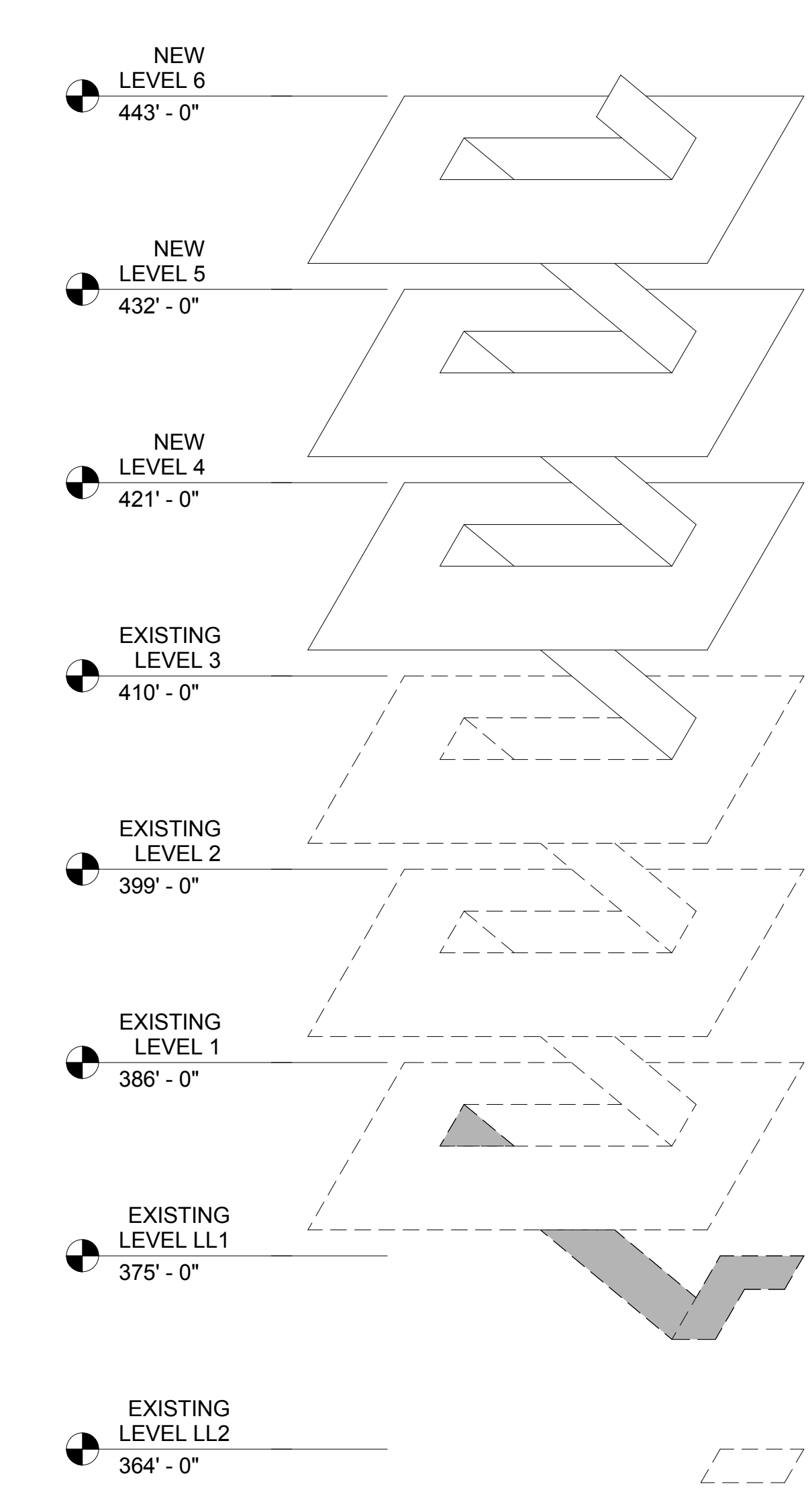
<b>REVISION 1</b> Revisions: 08/05/2015 Date		 Durham VAMC Dept. of Veterans Affairs 508 Fulton Street Durham, NC 27705		<b>Structural</b> AMERICAN STRUCTUREPOINT 7260 Shadeland Station Indianapolis, IN 46256 Tele: 317-547-5580	<b>MEP Engineer</b> APOGEE CONSULTING GROUP 1151 Kildaire Farm Road, Suite 120 Cary, NC 27511 Tele: 919-858-7420	<b>Civil Engineer</b> GUIDON DESIGN INC. 905 N. Capitol Ave. Suite 100 Indianapolis, IN 46204 Tele: 317-800-6388	<b>Functional Design</b> CARL WALKER INC. 14045 Ballantyne Corp. Place, Suite 380 Charlotte, NC 28277 Tele: 704-716-8000	<b>PROJECT LEADER/ARCHITECT:</b>  905 N. CAPITOL AVE. SUITE 100 INDIANAPOLIS, IN 46204 317.800.6388 WWW.GUIDONDESIGN.COM SUSTAINABLE ARCHITECTURE + ENGINEERING	<b>Drawing Title</b> FOUNDATION PLAN / EXISTING LEVEL LL2 <b>Approved for Design Concept:</b> MICHAEL JAKUBIAK PROJECT ENGINEER 919-286-0411	<b>Project Title</b> EXPAND PARKING GARAGE BUILDING# 33 <b>Location</b> Durham VAMC <b>Date</b> 08/05/2015 <b>Checked By:</b> JAP <b>Drawn By:</b> BGC	<b>Project Number</b> 2013.00188 <b>Building Number</b> Bldg 33 <b>Drawing Number</b> SB101	<b>OFFICE OF FACILITIES MANAGEMENT</b> <b>VA Project Number</b> 558-318 
---	--	---	--	--	--	--	--	---	---	---	--	--

three inches = one foot  
one and one half inches = one foot  
one inch = one foot  
three quarters inch = one foot  
one half inch = one foot  
three eighths inch = one foot  
one quarter inch = one foot  
one eighth inch = one foot

C:\Revit\Revit Structure 2013\2013\_00188\_ST\_VA Durham PG\_CENTRAL\_05132014\_RSTR13.bourne.rvt



- PLAN NOTES:
1. ELEVATIONS LISTED ON THE ISOMETRIC AND PLAN BELOW ARE DESIGN ELEVATIONS GIVEN FOR THE EXISTING STRUCTURE FOR THE ORIGINAL CONSTRUCTION DOCUMENTS. THE CONTRACTOR IS RESPONSIBLE FOR FIELD VERIFYING, TO THE EXTENT REQUIRED, SPOT ELEVATIONS THROUGHOUT THE STRUCTURE. RELATIVE FLOOR-TO-FLOOR HEIGHTS MUST BE MAINTAINED AS SHOWN.
  2. REFER TO ARCHITECTURAL DEMOLITION PLAN FOR ALL REQUIRED DEMOLITION PRIOR TO VERTICAL EXPANSION.

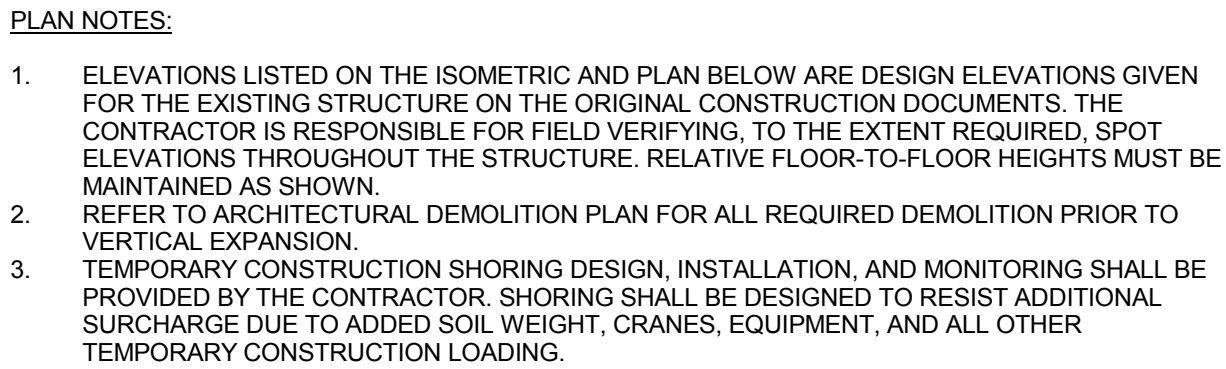


2  
SF101  
3/32" = 1'-0"



**EXISTING LEVEL LL1 SLAB ON GRADE PLAN**

ISOMETRIC

<b>REVISION 1</b> Revisions: 08/05/2015 Date		 Durham VAMC Dept. of Veterans Affairs 508 Fulton Street Durham, NC 27705		<b>Structural</b> AMERICAN STRUCTUREPOINT 7260 Shadeland Station Indianapolis, IN 46256 Tele: 317-547-5580	<b>MEP Engineer</b> APOGEE CONSULTING GROUP 1151 Kildaire Farm Road, Suite 120 Cary, NC 27511 Tele: 919-858-7420	<b>Civil Engineer</b> GUIDON DESIGN INC. 905 N. Capitol Ave. Suite 100 Indianapolis, IN 46204 Tele: 317-800-6388	<b>Functional Design</b> CARL WALKER INC. 14045 Ballantyne Corp. Place, Suite 380 Charlotte, NC 28277 Tele: 704-716-8000	<b>PROJECT LEADER/ARCHITECT:</b>  905 N. CAPITOL AVE. SUITE 100 INDIANAPOLIS, IN 46204 317.800.6388 WWW.GUIDONDESIGN.COM SUSTAINABLE ARCHITECTURE + ENGINEERING	<b>Drawing Title</b> EXISTING LEVEL LL1 SLAB ON GRADE PLAN <b>Approved for Design Concept:</b> MICHAEL JAKUBIAK PROJECT ENGINEER 919-286-0411	<b>Project Title</b> EXPAND PARKING GARAGE BUILDING# 33 <b>Location</b> Durham VAMC <b>Date</b> 08/05/2015 <b>Checked By:</b> JAP <b>Drawn By:</b> BGC	<b>Project Number</b> 2013.00188 <b>Building Number</b> Bldg 33 <b>Drawing Number</b> SF101	<b>OFFICE OF FACILITIES MANAGEMENT</b> <b>VA Project Number</b> 558-318 
---	--	---	--	--	--	--	--	---	--	---	--	--

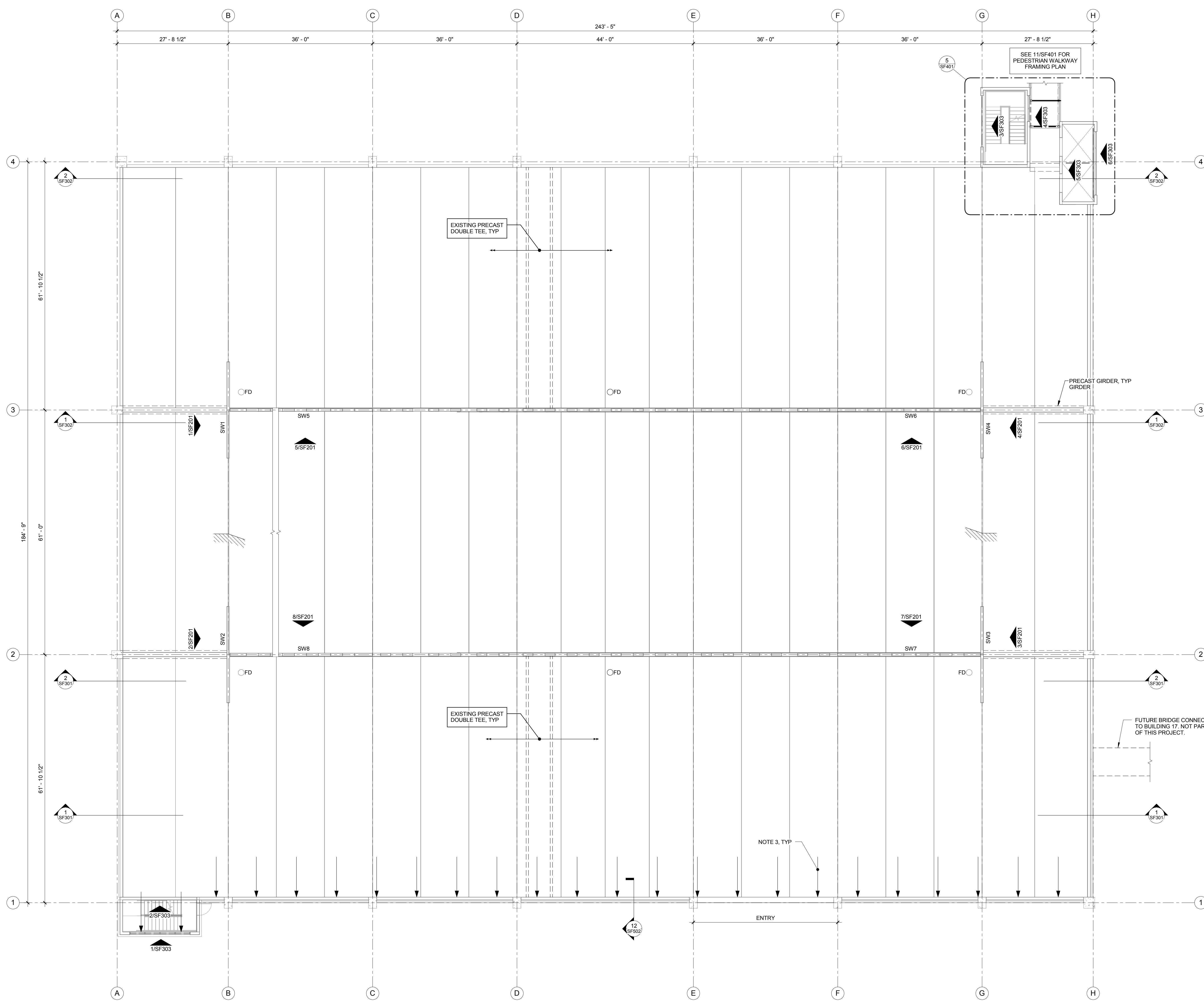


1  
SF102

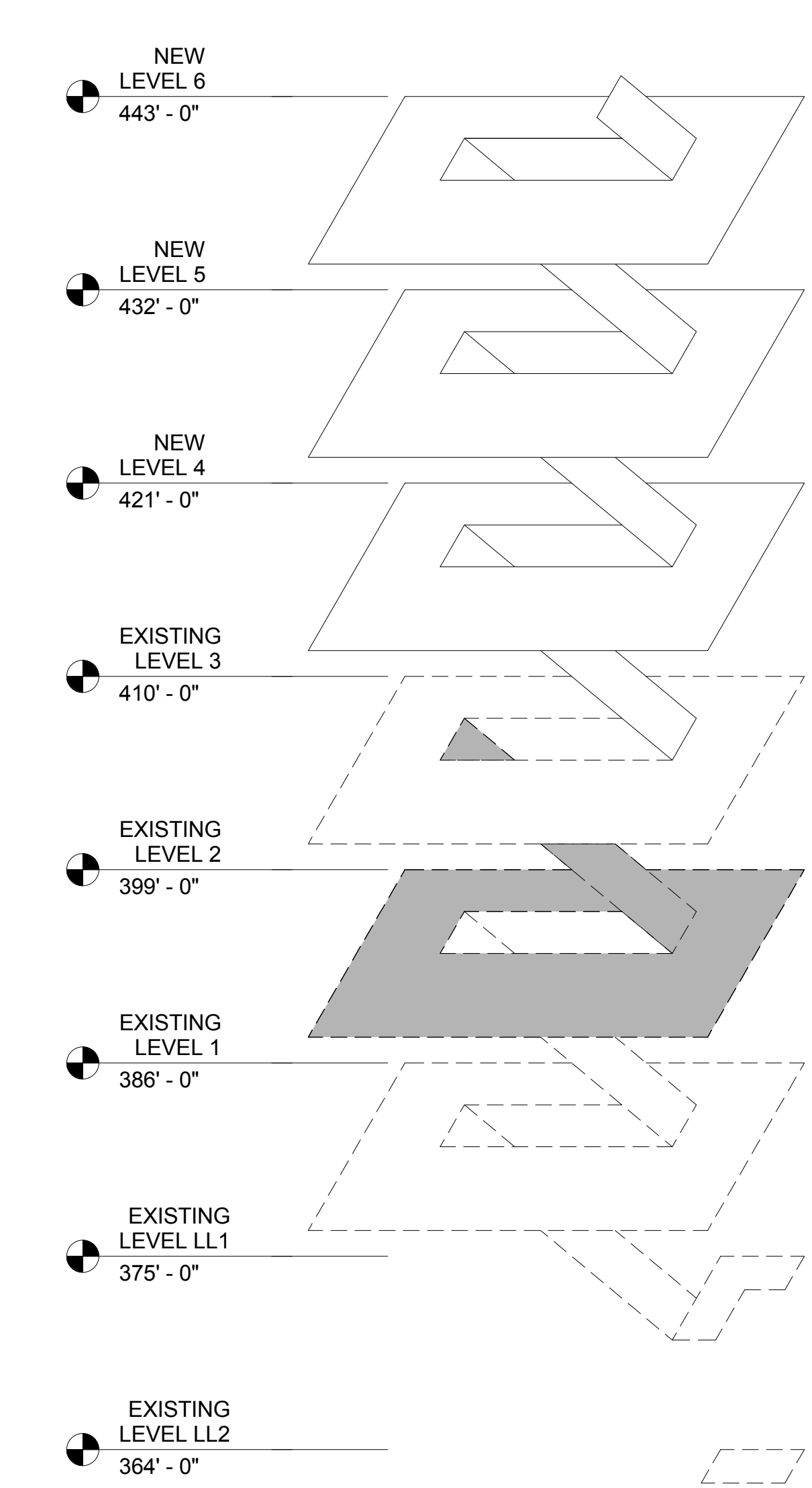
										<div style="text-align: center;"> <div>BID SET</div> <div> <div> <div>Drawing Title</div> <div>EXISTING LEVEL 1 FRAMING PLAN</div> </div> <div> <div>Project Title</div> <div>EXPAND PARKING GARAGE BUILDING# 33</div> </div> <div> <div>Project Number</div> <div>2013.00188</div> </div> <div> <div>Building Number</div> <div>Bldg 33</div> </div> <div> <div>Office of Facilities Management</div> </div> </div> </div>									
										<div style="text-align: center;"> <div> <div>Approved for Design Concept:</div> <div>MICHAEL JAKUBIAK PROJECT ENGINEER 919-286-0411</div> </div> <div> <div>Location</div> <div>Durham VAMC</div> </div> <div> <div>Drawing Number</div> <div>SF102</div> </div> <div> <div>VA Project Number</div> <div>558-318</div> </div> <div> <div>Department of Veterans Affairs</div> </div> </div>									
<div> <div>REVISION 1</div> <div>Revisions:</div> </div> <div> <div>08/05/2015</div> <div>Date</div> </div>										<div> <div>  <div> <div>Durham VAMC Dept. of Veterans Affairs</div> <div>508 Fulton Street</div> <div>Durham, NC 27705</div> </div> </div> <div> <div>  <div>08/05/2014</div> </div> </div> </div>									
<div> <div>Structural</div> <div>AMERICAN STRUCTUREPOINT</div> <div>7260 Shadeland Station Indianapolis, IN 46256</div> <div>Tel: 317-547-5580</div> </div>										<div> <div>MEP Engineer</div> <div>APOGEE CONSULTING GROUP</div> <div>1151 Kildaire Farm Road, Suite 100 Cary, NC 27511</div> <div>Tel: 919-858-7420</div> </div>									
<div> <div>Civil Engineer</div> <div>GUIDON DESIGN INC.</div> <div>905 N. Capitol Ave. Suite 100 Indianapolis, IN 46204</div> <div>Tel: 317-800-6388</div> </div>										<div> <div>Functional Design</div> <div>CARL WALKER INC.</div> <div>14045 Ballantyne Corp. Place, Suite 380 Charlotte, NC 28277</div> <div>Tel: 704-716-8000</div> </div>									
<div> <div>PROJECT LEADER/ARCHITECT:</div> <div> <div>GUIDON DESIGN</div> <div>905 N. CAPITOL AVE. SUITE 100 INDIANAPOLIS, IN 46204 317.800.6388 WWW.GUIDONDESIGN.COM</div> <div>SUSTAINABLE ARCHITECTURE + ENGINEERING</div> </div> </div>																			

three inches = one foot  
one and one half inches = one foot  
one inch = one foot  
three quarters inch = one foot  
one half inch = one foot  
three eighths inch = one foot  
one quarter inch = one foot  
one eighth inch = one foot

C:\Revit\Revit Structure 2013\2013\_00488\_ST\_VA Durham PG\_CENTRAL\_05132014\_RSTR13.bourne.rvt



- PLAN NOTES:**
- ELEVATIONS LISTED ON THE ISOMETRIC AND PLAN BELOW ARE DESIGN ELEVATIONS GIVEN FOR THE EXISTING STRUCTURE ON THE ORIGINAL CONSTRUCTION DOCUMENTS. THE CONTRACTOR IS RESPONSIBLE FOR FIELD VERIFYING, TO THE EXTENT REQUIRED, SPOT ELEVATIONS THROUGHOUT THE STRUCTURE. RELATIVE FLOOR-TO-FLOOR HEIGHTS MUST BE MAINTAINED AS SHOWN.
  - REFER TO ARCHITECTURAL DEMOLITION PLAN FOR ALL REQUIRED DEMOLITION PRIOR TO VERTICAL EXPANSION.
  - TEMPORARY CONSTRUCTION SHORING DESIGN, INSTALLATION, AND MONITORING SHALL BE PROVIDED BY THE CONTRACTOR. SHORING SHALL BE DESIGNED TO RESIST ADDITIONAL SURCHARGE DUE TO ADDED SOIL WEIGHT, CRANES, EQUIPMENT, AND ALL OTHER TEMPORARY CONSTRUCTION LOADING.
  - REFER TO AP DRAWINGS FOR TYPICAL PIPE BOLLARD DETAILS.

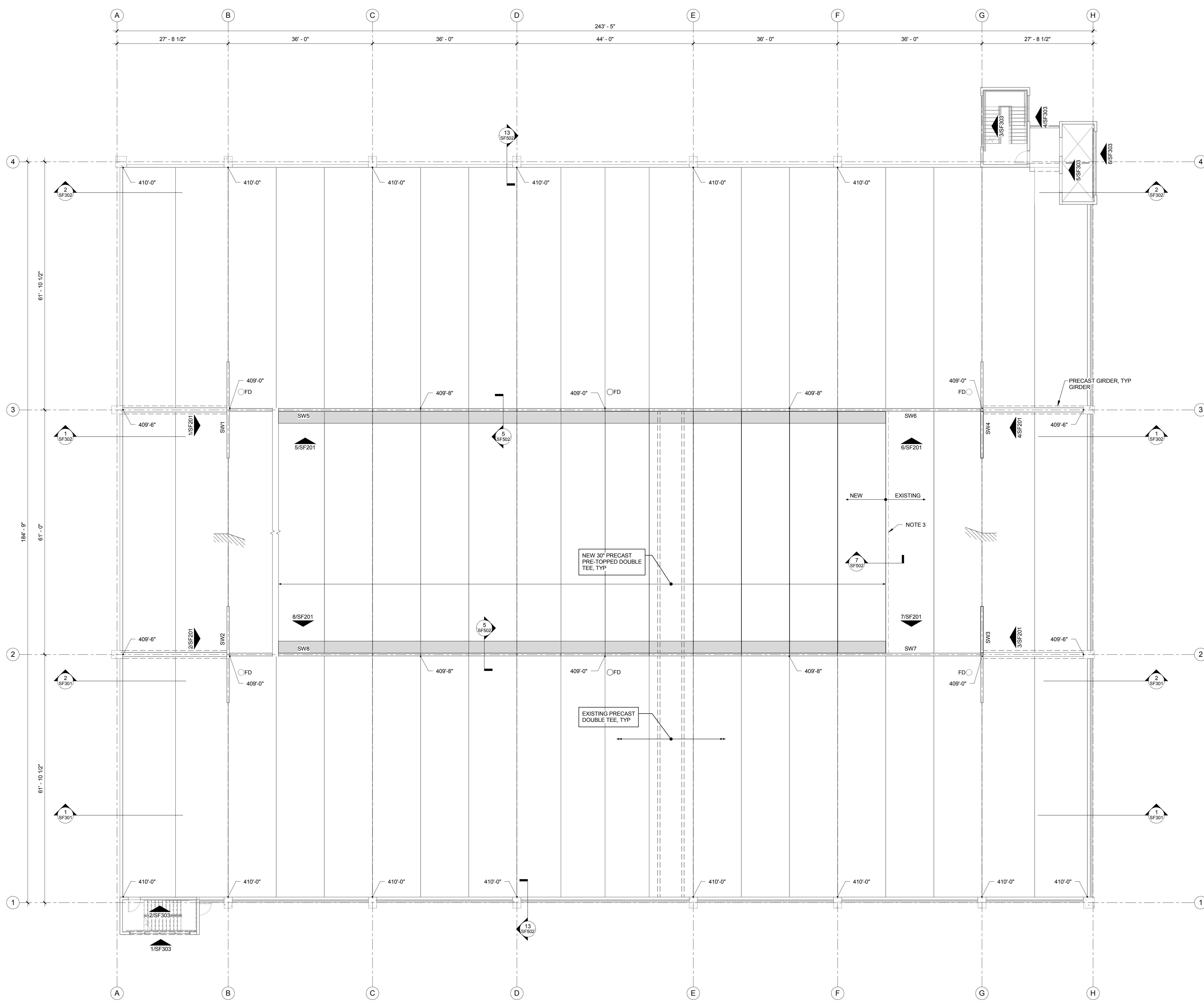


ISOMETRIC

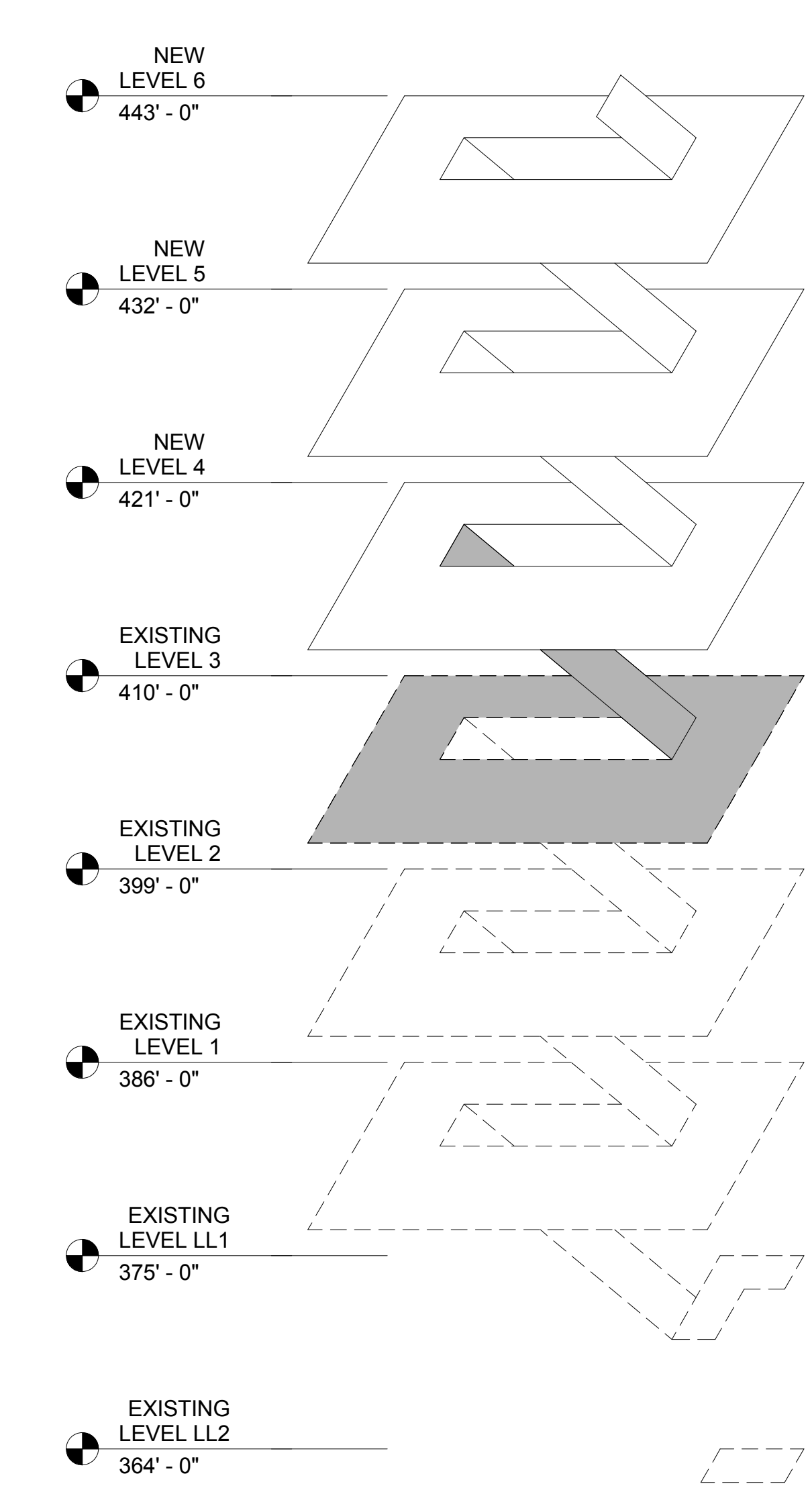
**EXISTING LEVEL 2 FRAMING PLAN**  
1 SF103 3/32" = 1'-0"

<b>REVISION 1</b> Revisions: 08/05/2015 Date		 Durham VAMC Dept. of Veterans Affairs 508 Fulton Street Durham, NC 27705		<b>Structural</b> AMERICAN STRUCTUREPOINT 7260 Shadeland Station Indianapolis, IN 46256 Tele: 317-547-5580	<b>MEP Engineer</b> APOGEE CONSULTING GROUP 1151 Kildaire Farm Road, Suite 120 Cary, NC 27511 Tele: 919-858-7420	<b>Civil Engineer</b> GUIDON DESIGN INC. 905 N. Capitol Ave, Suite 100 Indianapolis, IN 46204 Tele: 317-800-6388	<b>Functional Design</b> CARL WALKER INC. 14045 Ballantyne Corp. Place, Suite 380 Charlotte, NC 28277 Tele: 704-716-8000	<b>PROJECT LEADER/ARCHITECT:</b>  905 N. CAPITOL AVE. SUITE 100 INDIANAPOLIS, IN 46204 317.800.6388 WWW.GUIDONDESIGN.COM SUSTAINABLE ARCHITECTURE + ENGINEERING	<b>BID SET</b> Drawing Title: <b>EXISTING LEVEL 2 FRAMING PLAN</b> Project Title: <b>EXPAND PARKING GARAGE BUILDING# 33</b> Project Number: <b>2013.00188</b> Building Number: <b>Bldg 33</b> Approved for Design Concept: <b>MICHAEL JAKUBIAK PROJECT ENGINEER 919-286-0411</b> Location: <b>Durham VAMC</b> Date: <b>08/05/2015</b> Checked By: <b>JAP</b> Drawn By: <b>BGC</b> Drawing Number: <b>SF103</b>		<b>OFFICE OF FACILITIES MANAGEMENT</b> VA Project Number: <b>558-318</b> 

three inches = one foot  
one and one half inches = one foot  
one inch = one foot  
three quarters inch = one foot  
one half inch = one foot  
three eighths inch = one foot  
one quarter inch = one foot  
one eighth inch = one foot



- PLAN NOTES:
- ELEVATIONS LISTED ON THE ISOMETRIC AND PLAN BELOW ARE DESIGN ELEVATIONS GIVEN FOR THE EXISTING STRUCTURE ON THE ORIGINAL CONSTRUCTION DOCUMENTS. THE CONTRACTOR IS RESPONSIBLE FOR FIELD VERIFYING, TO THE EXTENT REQUIRED, SPOT ELEVATIONS THROUGHOUT THE STRUCTURE. RELATIVE FLOOR-TO-FLOOR HEIGHTS MUST BE MAINTAINED AS SHOWN.
  - REFER TO ARCHITECTURAL DEMOLITION PLAN FOR ALL REQUIRED DEMOLITION PRIOR TO VERTICAL EXPANSION.
  - REMOVE EXISTING CLOSURE SPANDREL AND STORE / RELOCATE TO NEW UPPER FLOOR. SEE DEMOLITION PLAN IN ARCHITECTURAL SET FOR MORE INFORMATION.



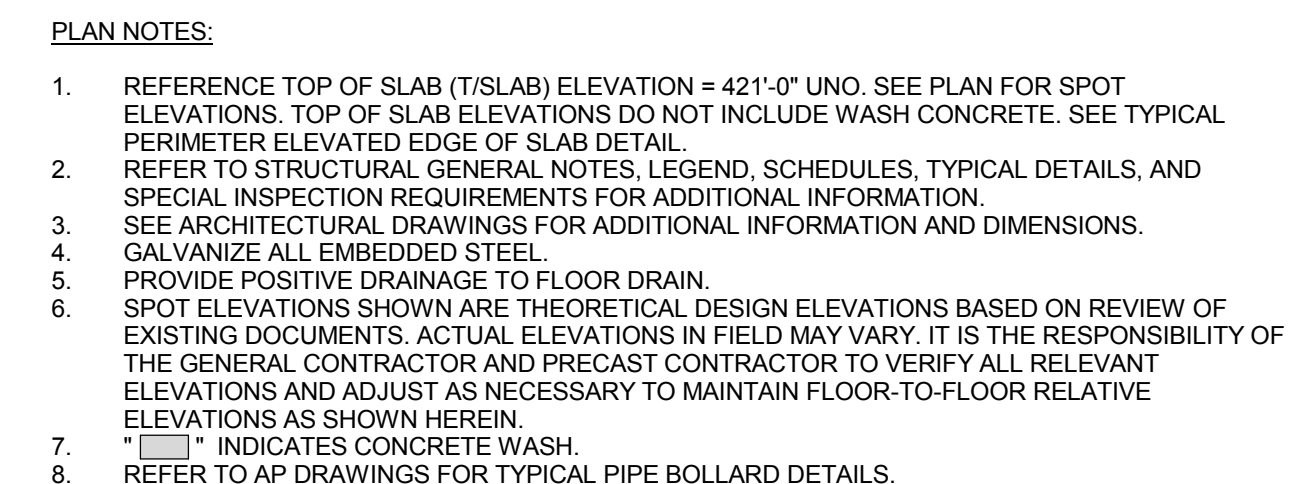
1  
SF104  
3/32" = 1'-0"

**EXISTING LEVEL 3 FRAMING PLAN**

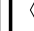
ISOMETRIC

<b>REVISION 1</b> Revisions: 08/05/2015 Date		 Durham VAMC Dept. of Veterans Affairs 508 Fulton Street Durham, NC 27705		<b>Structural</b> AMERICAN STRUCTUREPOINT 7260 Shadeland Station Indianapolis, IN 46256 Tele: 317-547-5580	<b>MEP Engineer</b> APOGEE CONSULTING GROUP 1151 Kildaire Farm Road, Suite 120 Cary, NC 27511 Tele: 919-858-7420	<b>Civil Engineer</b> GUIDON DESIGN INC. 905 N. Capitol Ave, Suite 100 Indianapolis, IN 46204 Tele: 317-800-6388	<b>Functional Design</b> CARL WALKER INC. 14045 Ballantyne Corporate Place, Suite 380 Charlotte, NC 28277 Tele: 704-716-8000	<b>PROJECT LEADER/ARCHITECT:</b>  905 N. CAPITOL AVE. SUITE 100 INDIANAPOLIS, IN 46204 317.800.6388 WWW.GUIDONDESIGN.COM SUSTAINABLE ARCHITECTURE + ENGINEERING	<b>BID SET</b> Drawing Title: <b>EXISTING LEVEL 3 FRAMING PLAN</b> Project Title: <b>EXPAND PARKING GARAGE BUILDING# 33</b> Approved for Design Concept: <b>MICHAEL JAKUBIAK PROJECT ENGINEER 919-286-0411</b> Date: <b>08/05/2015</b> Checked By: <b>JAP</b> Drawn By: <b>BGC</b>		Project Number: <b>2013.00188</b> Building Number: <b>Bldg 33</b> Drawing Number: <b>SF104</b>	OFFICE OF FACILITIES MANAGEMENT VA Project Number: <b>558-318</b> 
---	--	--	--	--	--	--	--	--	--	--	--	--

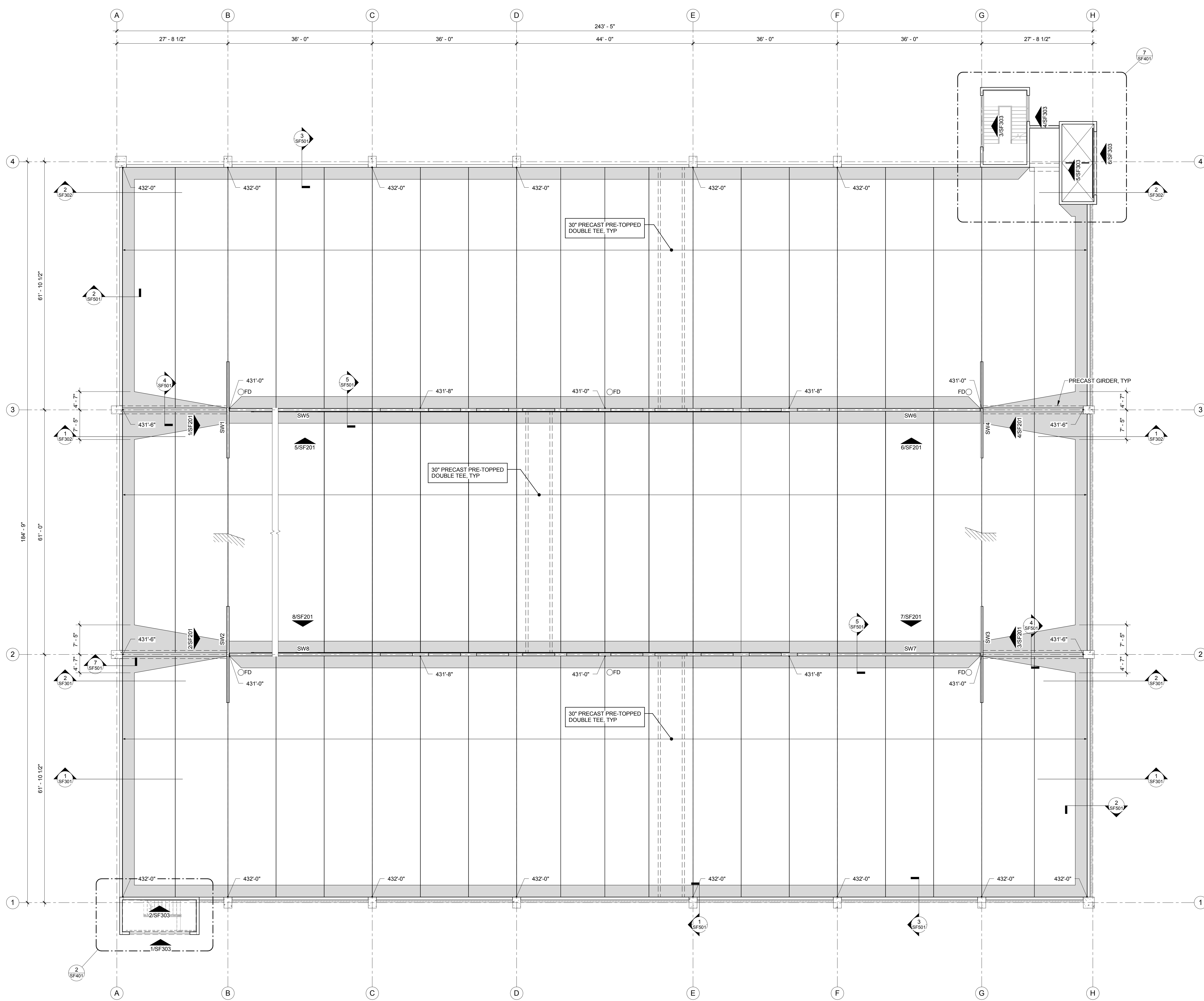




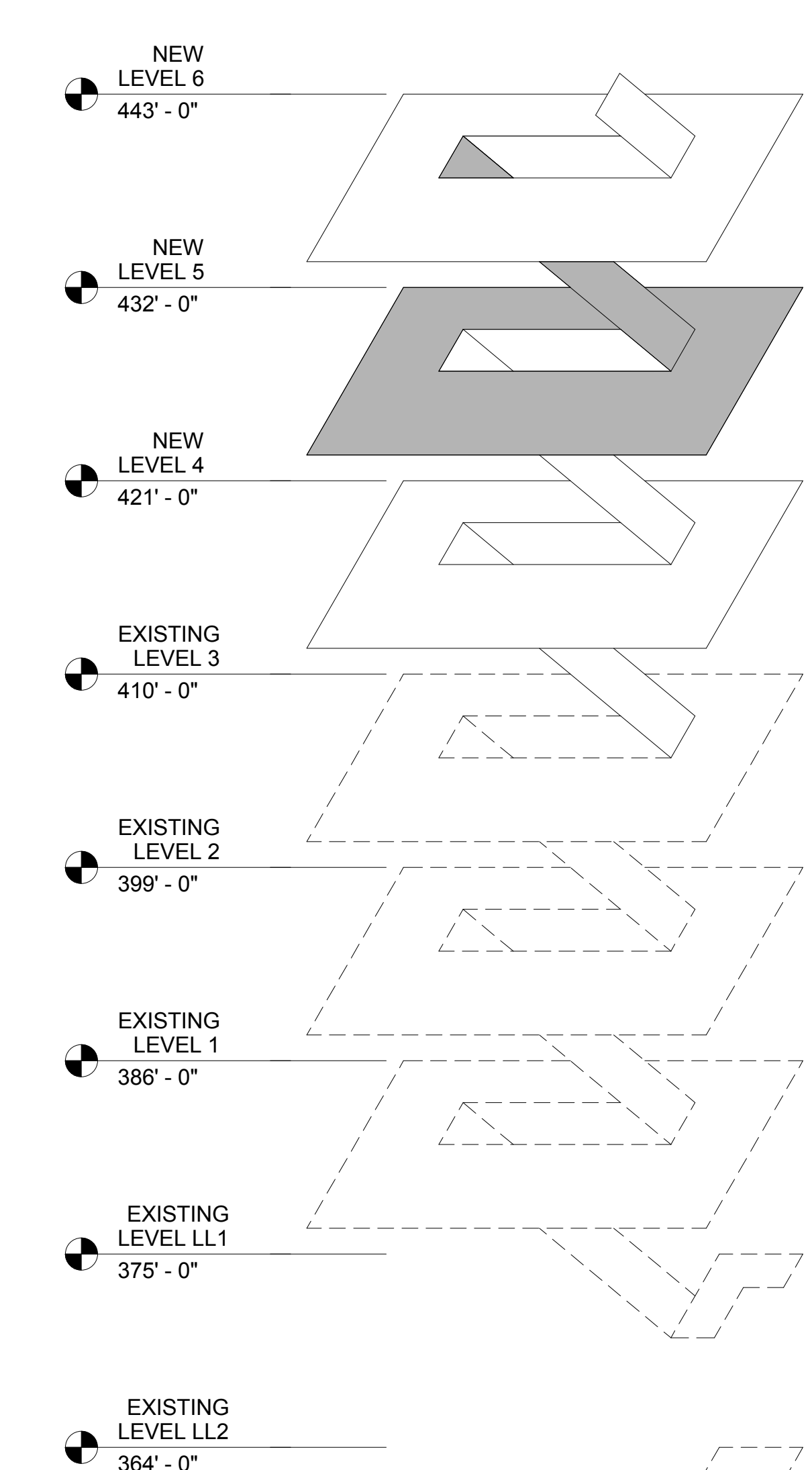
**LEVEL 4 FRAMING PLAN**

OFFICE OF FACILITIES MANAGEMENT	
VA Project Number 558-318	
	<b>Department of Veterans Affairs</b>

three inches = one foot  
one and one half inches = one foot  
one inch = one foot  
three quarters inch = one foot  
one half inch = one foot  
three eighths inch = one foot  
one quarter inch = one foot  
one eighth inch = one foot



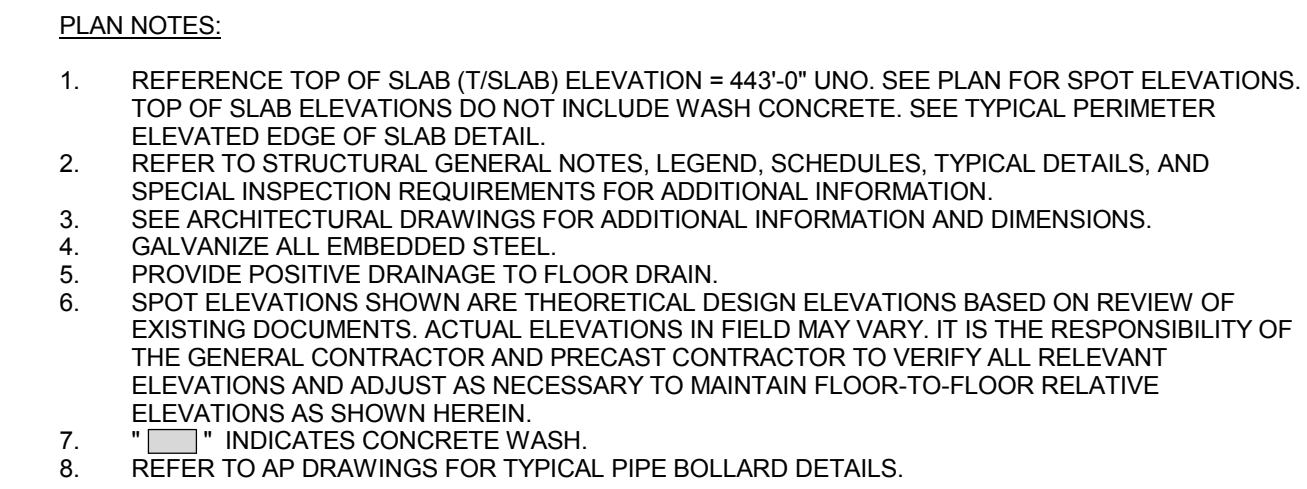
- PLAN NOTES:
- REFERENCE TOP OF SLAB (T/SLAB) ELEVATION = 432'-0" UNO. SEE PLAN FOR SPOT ELEVATIONS. TOP OF SLAB ELEVATIONS DO NOT INCLUDE WASH CONCRETE. SEE TYPICAL PERIMETER ELEVATED EDGE OF SLAB DETAIL.
  - REFER TO STRUCTURAL GENERAL NOTES, LEGEND, SCHEDULES, TYPICAL DETAILS, AND SPECIAL INSPECTION REQUIREMENTS FOR ADDITIONAL INFORMATION.
  - SEE ARCHITECTURAL DRAWINGS FOR ADDITIONAL INFORMATION AND DIMENSIONS.
  - GALVANIZE ALL EMBEDDED STEEL.
  - PROVIDE POSITIVE DRAINAGE TO FLOOR DRAIN.
  - SPOT ELEVATIONS SHOWN ARE THEORETICAL DESIGN ELEVATIONS BASED ON REVIEW OF EXISTING DOCUMENTS. ACTUAL ELEVATIONS IN FIELD MAY VARY. IT IS THE RESPONSIBILITY OF THE GENERAL CONTRACTOR AND PRECAST CONTRACTOR TO VERIFY ALL RELEVANT ELEVATIONS AND ADJUST AS NECESSARY TO MAINTAIN FLOOR-TO-FLOOR RELATIVE ELEVATIONS AS SHOWN HEREIN.
  - INDICATES CONCRETE WASH.
  - REFER TO AP DRAWINGS FOR TYPICAL PIPE BOLLARD DETAILS.



1 LEVEL 5 FRAMING PLAN  
3/32" = 1'-0"

ISOMETRIC

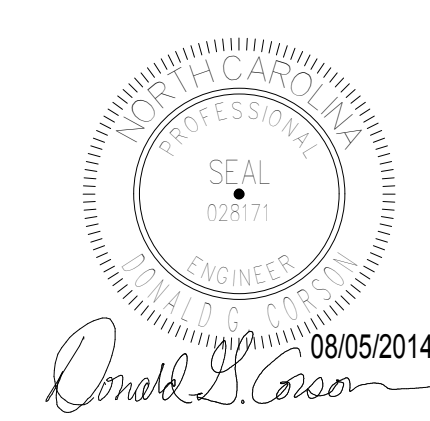
<b>REVISION 1</b> Revisions: 08/05/2015 Date		 Durham VAMC Dept. of Veterans Affairs 508 Fulton Street Durham, NC 27705		<b>Structural</b> AMERICAN STRUCTUREPOINT 7260 Shadeland Station Indianapolis, IN 46256 Tele: 317-547-5580	<b>MEP Engineer</b> APOGEE CONSULTING GROUP 1151 Kildaire Farm Road, Suite 120 Cary, NC 27511 Tele: 919-858-7420	<b>Civil Engineer</b> GUIDON DESIGN INC. 905 N. Capitol Ave, Suite 100 Indianapolis, IN 46204 Tele: 317-800-6388	<b>Functional Design</b> CARL WALKER INC. 14045 Ballantyne Corp. Place, Suite 380 Charlotte, NC 28277 Tele: 704-716-8000	<b>PROJECT LEADER/ARCHITECT:</b>  905 N. CAPITOL AVE. SUITE 100 INDIANAPOLIS, IN 46204 317.800.6388 WWW.GUIDONDESIGN.COM SUSTAINABLE ARCHITECTURE + ENGINEERING	<b>BID SET</b> Drawing Title: LEVEL 5 FRAMING PLAN Approved for Design Concept: MICHAEL JAKUBIAK PROJECT ENGINEER 919-286-0411		Project Title: EXPAND PARKING GARAGE BUILDING# 33 Location: Durham VAMC Date: 08/05/2015 Checked By: JAP Drawn By: BGC		Project Number: 2013.00188 Building Number: Bldg 33 Drawing Number: SF106	OFFICE OF FACILITIES MANAGEMENT VA Project Number: 558-318 



**LEVEL 6 FRAMING PLAN**




Durham VAMC Dept. of  
Veterans Affairs  
508 Fulton Street  
Durham, NC 27705



Structural	MEP Engineer	Civil Engineer	Functional Design
AMERICAN STRUCTUREPOINT	APOGEE CONSULTING GROUP	GUIDON DESIGN INC.	CARL WALKER INC.
7260 Shadeland Station Indianapolis, IN 46256	1151 Kildaire Farm Road, Suite 120, Cary, NC 27511	905 N. Capital Ave. Suite 100 Indianapolis, IN 46204	14045 Ballantyne Cor Place, Suite 380 Charlotte, NC 28277
Tele: 317-547-5580	Tele: 919-858-7420	Tele: 317-800-6388	Tele: 704-716-8000

905 N. CAPITOL AVE. SUITE 100 INDIANAPOLIS, IN 46204  
317.800.6388 WWW.GUIDONDESIGN.COM  
**SUSTAINABLE ARCHITECTURE + ENGINEERING**

Drawing title <b>LEVEL 6 FRAMING PLAN</b>	Project title <b>EXPAND PARKING GARAGE BUILDING# 33</b>	Project Number <b>2013.00188</b>	<b>OFFICE OF FACILITIES MANAGEMENT</b>
		Building Number <b>Bldg 33</b>	
Approved for Design Concept: <b>MICHAEL JAKUBIAK PROJECT ENGINEER 919-286-0411</b>	Location <b>Durham VAMC</b>	Drawing Number <b>SF107</b>	VA Project Number <b>558-318</b>
	Date <b>08/05/2015</b>	Checked By: <b>JAP</b>	 <b>Department of Veterans Affairs</b>
		Drawn By: <b>BGC</b>	



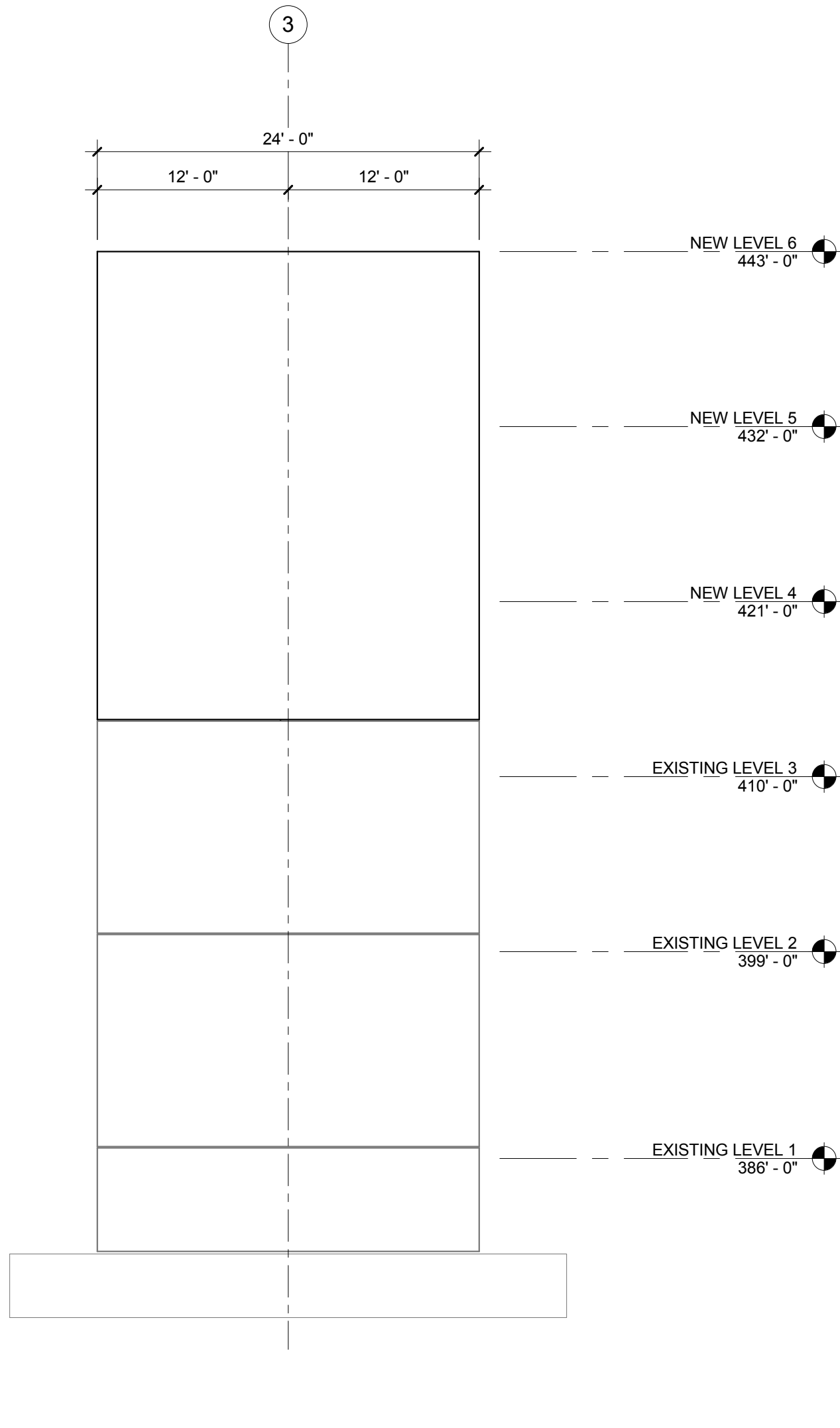
- PRECAST SHEARWALL NOTES:
1. LATERAL FORCES GIVEN ARE HORIZONTAL SEISMIC SHEAR FORCES (E) APPLIED AT EACH LEVEL UNLESS NOTED OTHERWISE AND SHALL BE USED WITH THE APPROPRIATE EQUATIONS FROM IBC2012 CODE TO DETERMINE THE MOST CRITICAL COMBINED EFFECT. FORCES SHOWN ARE REVERSIBLE AND STRENGTH LEVEL.
  2. PRECASTER SHALL DESIGN ALL SHEARWALLS FOR THE GREATER FORCE OF SEISMIC AS SHOWN AND WIND AS DEFINED IN THE GENERAL NOTES.
  3. PRECASTER SHALL VERIFY THAT SHEARWALL SEISMIC AND WIND FORCES DO NOT EXCEED THOSE SHOWN IN THE LATERAL FORCE SCHEDULE.
  4. INCREASE FORCES FOR DIAPHRAGM AND CONNECTION DESIGN AS REQUIRED BY ASCE 7-10 AND IBC 2012.
  5. PRECASTER SHALL DESIGN ALL PRECAST ELEMENTS INCLUDING REINFORCING, CONNECTIONS, AND LATERAL FORCE TRANSFER ELEMENTS. SEE PRECAST SPECIFICATIONS FOR MORE INFORMATION.
  6. FOR SHEARWALL SIZES, SEE SHEARWALL ELEVATIONS AND SHEARWALL SCHEDULE.
  7. SEE PLANS FOR SHEARWALL DESIGNATION.
  8. SHEARWALLS AND COLUMNS SHALL BE CONNECTED WHERE APPLICABLE SO THAT THEY ACT AS ONE INTEGRAL UNIT.

### SHEARWALL LATERAL FORCE SCHEDULE

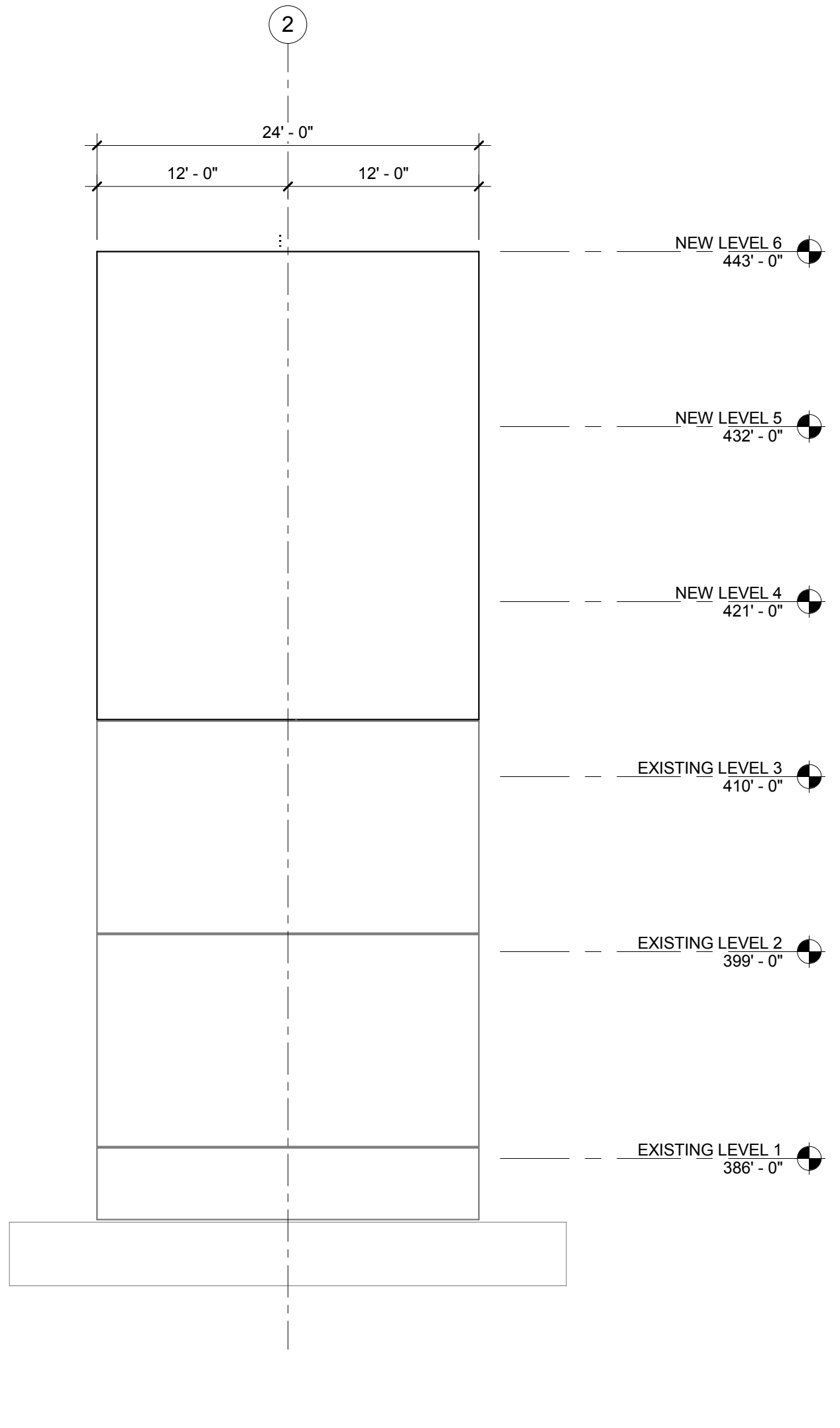
LEVEL	SW1 (KIPS)	SW2 (KIPS)	SW3 (KIPS)	SW4 (KIPS)	SW5 (KIPS)	SW6 (KIPS)	SW7 (KIPS)	SW8 (KIPS)
7	59	59	59	59	59	59	59	59
6	47	47	47	47	47	47	47	47
5	38	38	38	38	38	38	38	38
4	29	29	29	29	29	29	29	29
3	21	21	21	21	21	21	21	21
2	10	10	10	10	10	10	10	10
TOTAL AT FDN	204	204	204	204	204	204	204	204

### SHEARWALL SCHEDULE

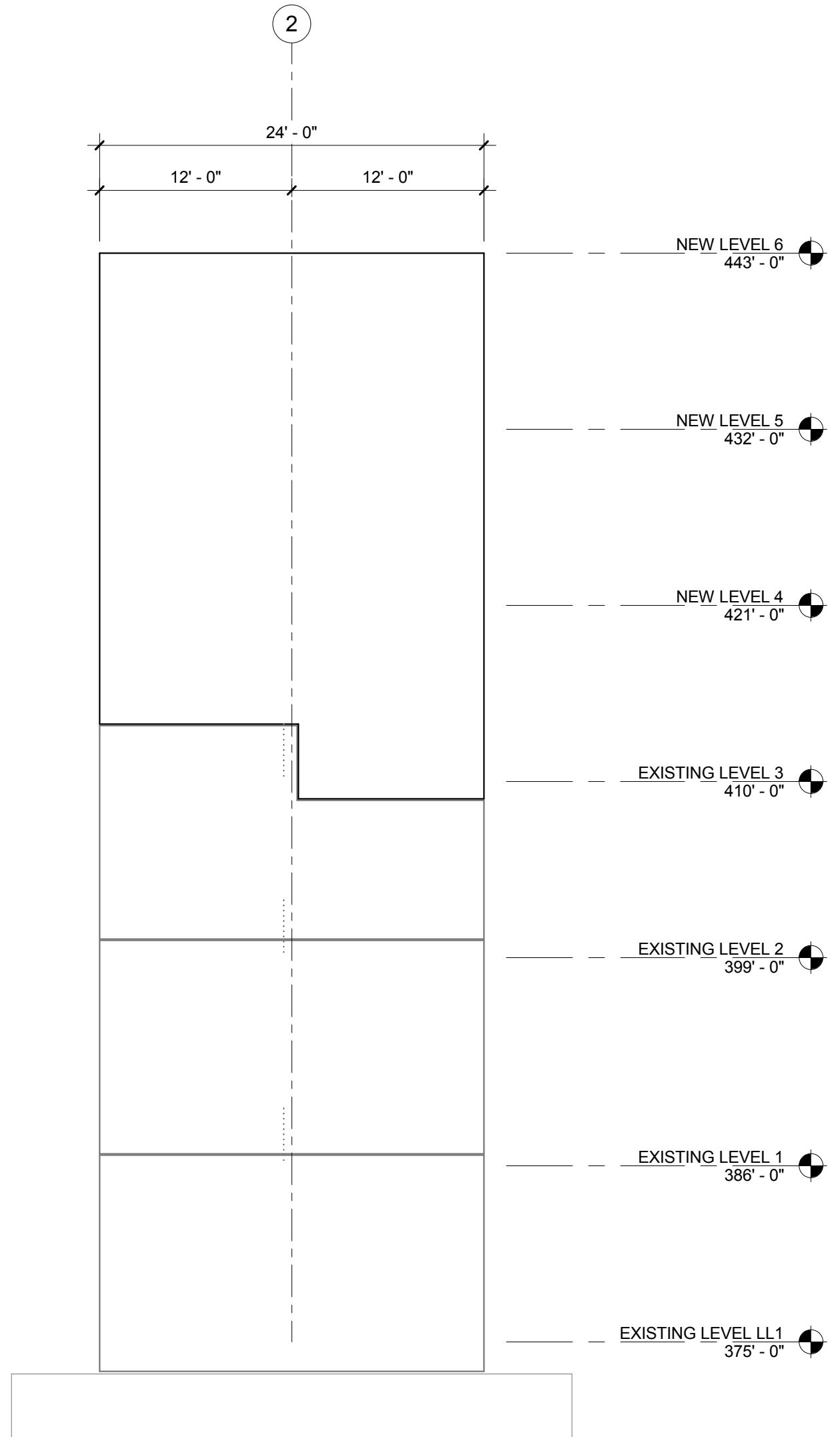
WALL	THICKNESS	LENGTH	REMARKS	DESIGN LOADS		
				DEAD LOAD (KIPS)	LIVE LOAD (KIPS)	TOTAL LOAD (KIPS)
SW1	8"	24'-0"	-	533	161	694
SW2	8"	24'-0"	-	507	161	668
SW3	8"	24'-0"	-	527	161	688
SW4	8"	24'-0"	-	554	161	715
SW5	8"	36'-0"	-	1152	468	1620
SW6	8"	36'-0"	-	1152	468	1620
SW7	8"	36'-0"	-	1044	432	1476
SW8	8"	36'-0"	-	1044	432	1476



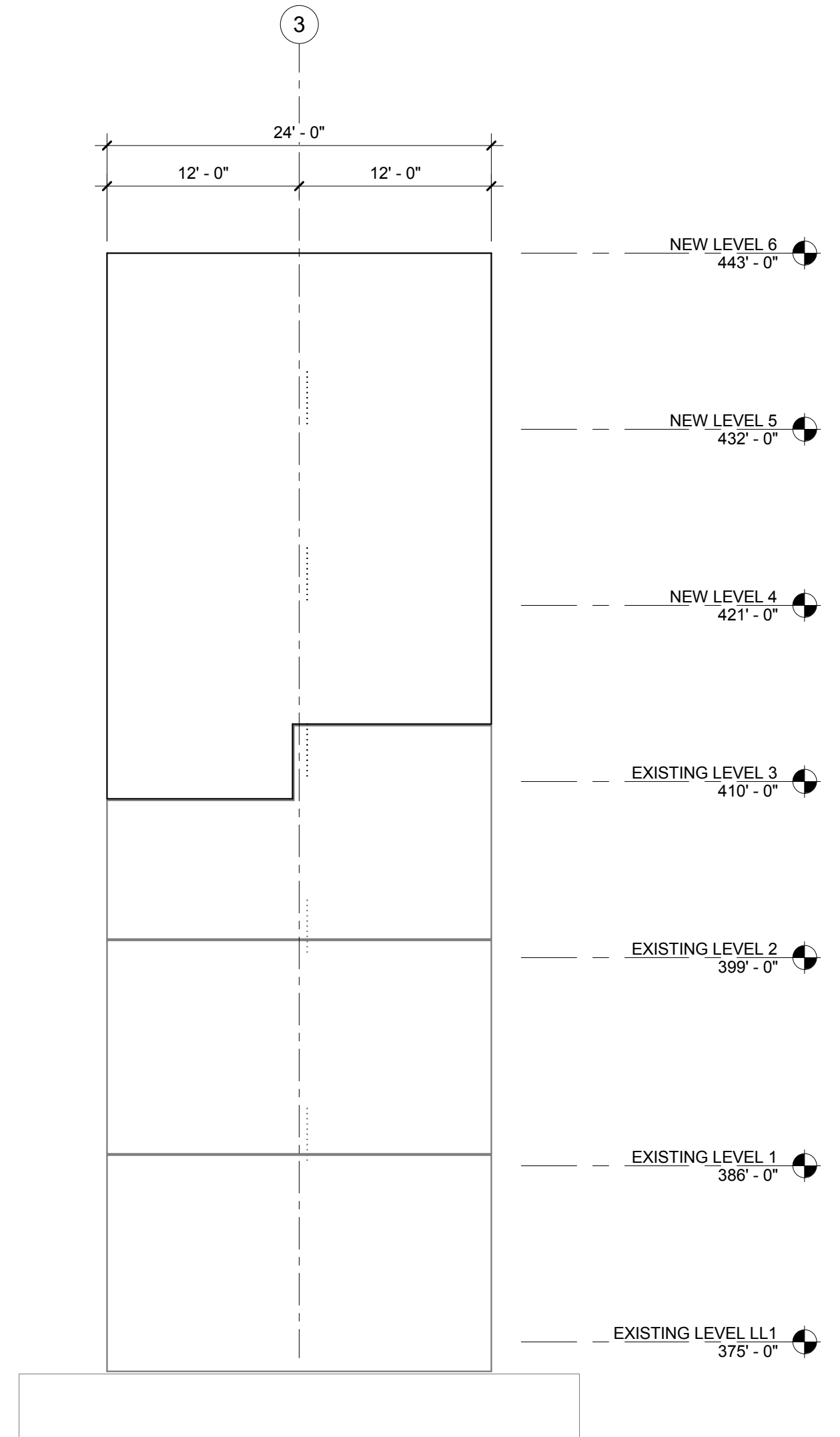
1 SHEARWALL ELEVATION GRID B - SW1  
SF201 1/8" = 1'-0"



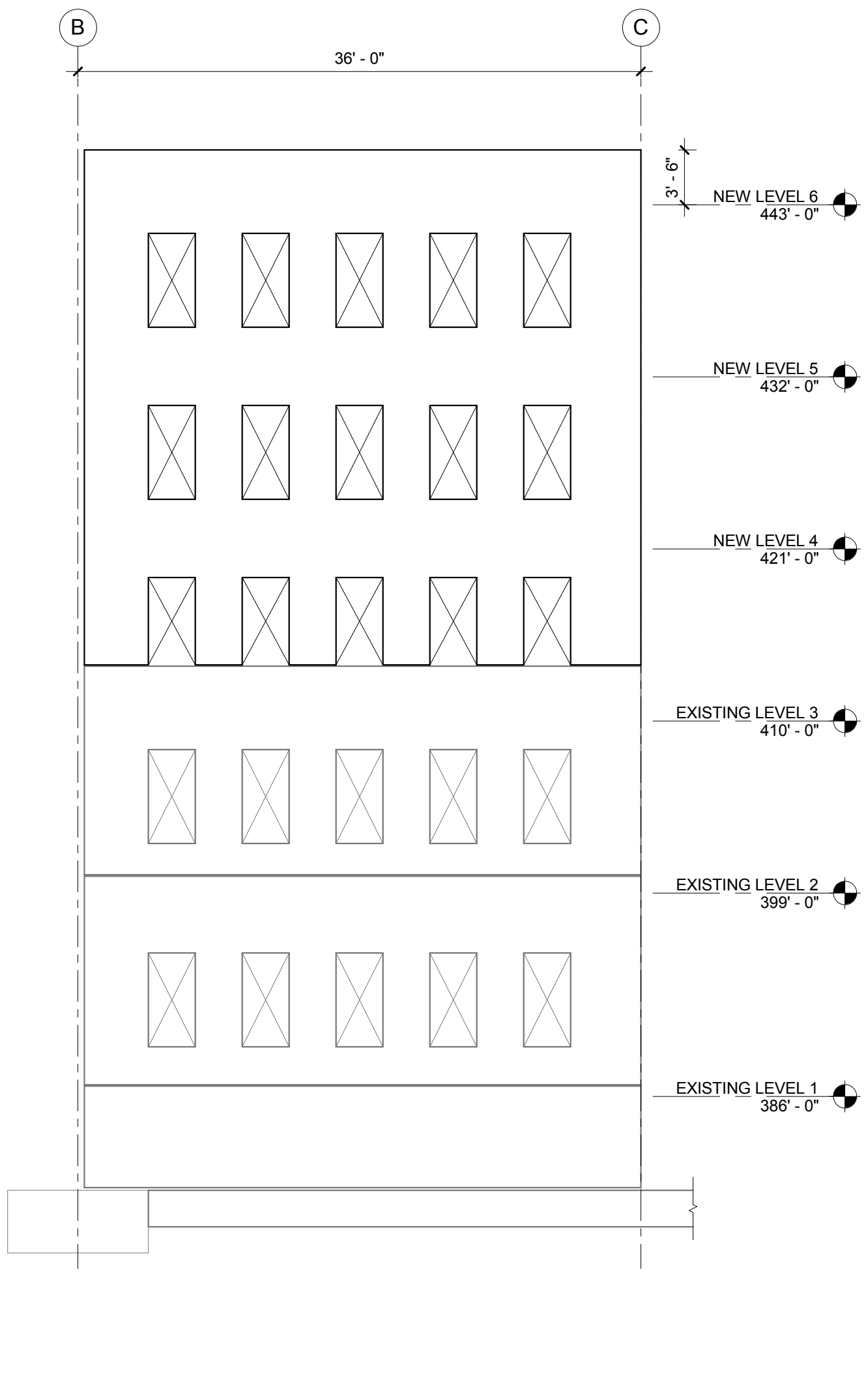
2 SHEARWALL ELEVATION GRID B - SW2  
SF201 1/8" = 1'-0"



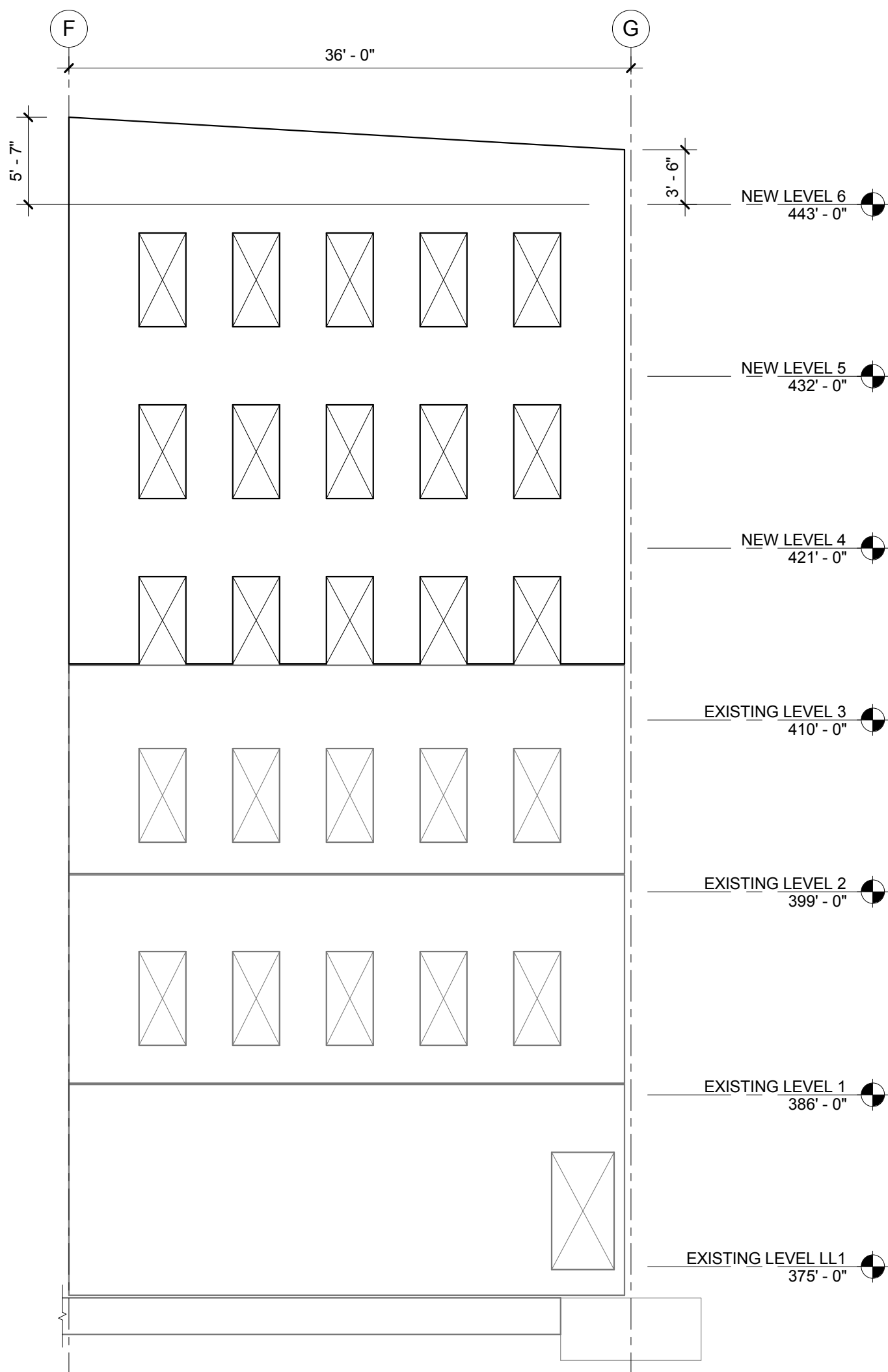
3 SHEARWALL ELEVATION GRID G - SW3  
SF201 1/8" = 1'-0"



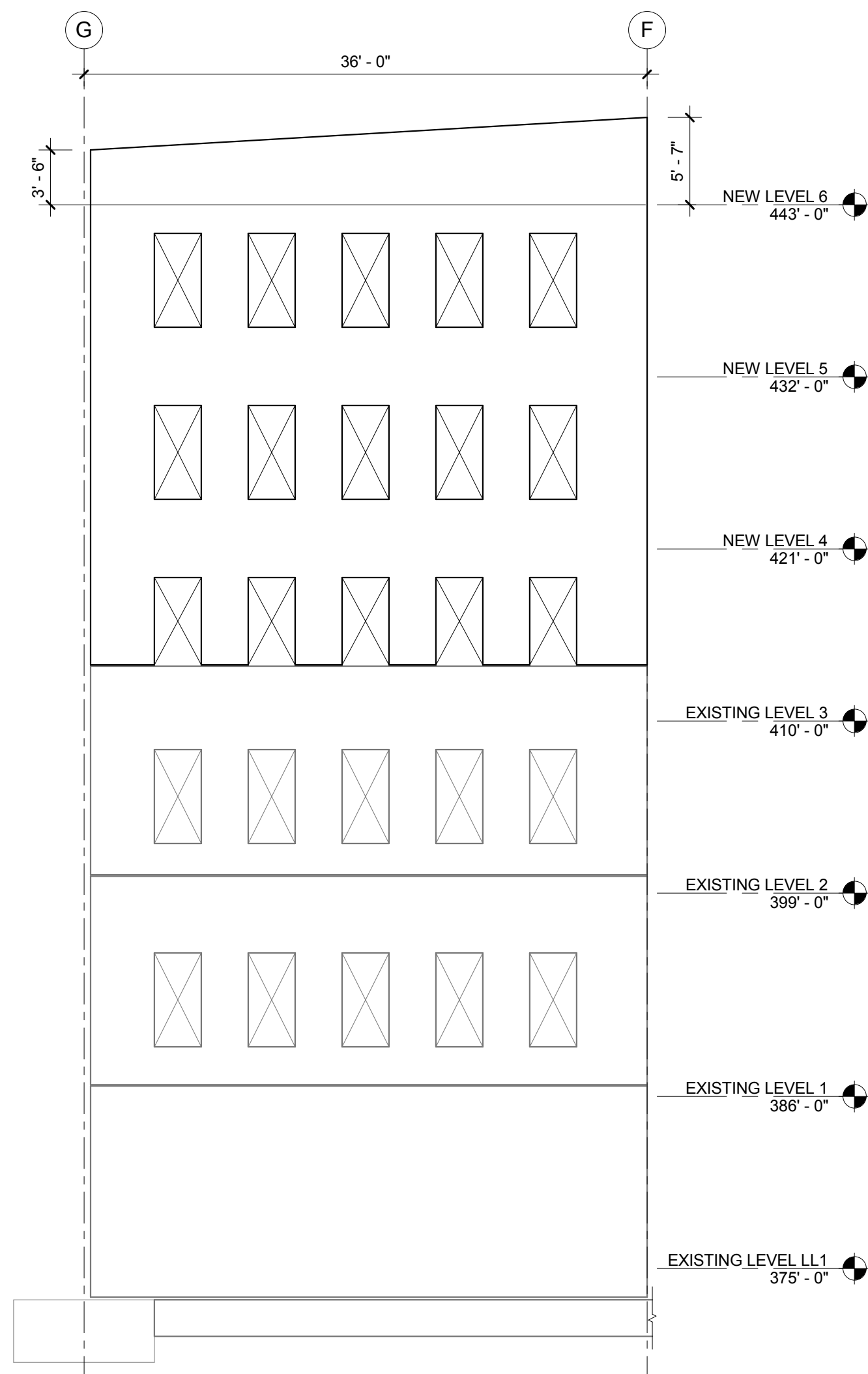
4 SHEARWALL ELEVATION GRID G - SW4  
SF201 1/8" = 1'-0"



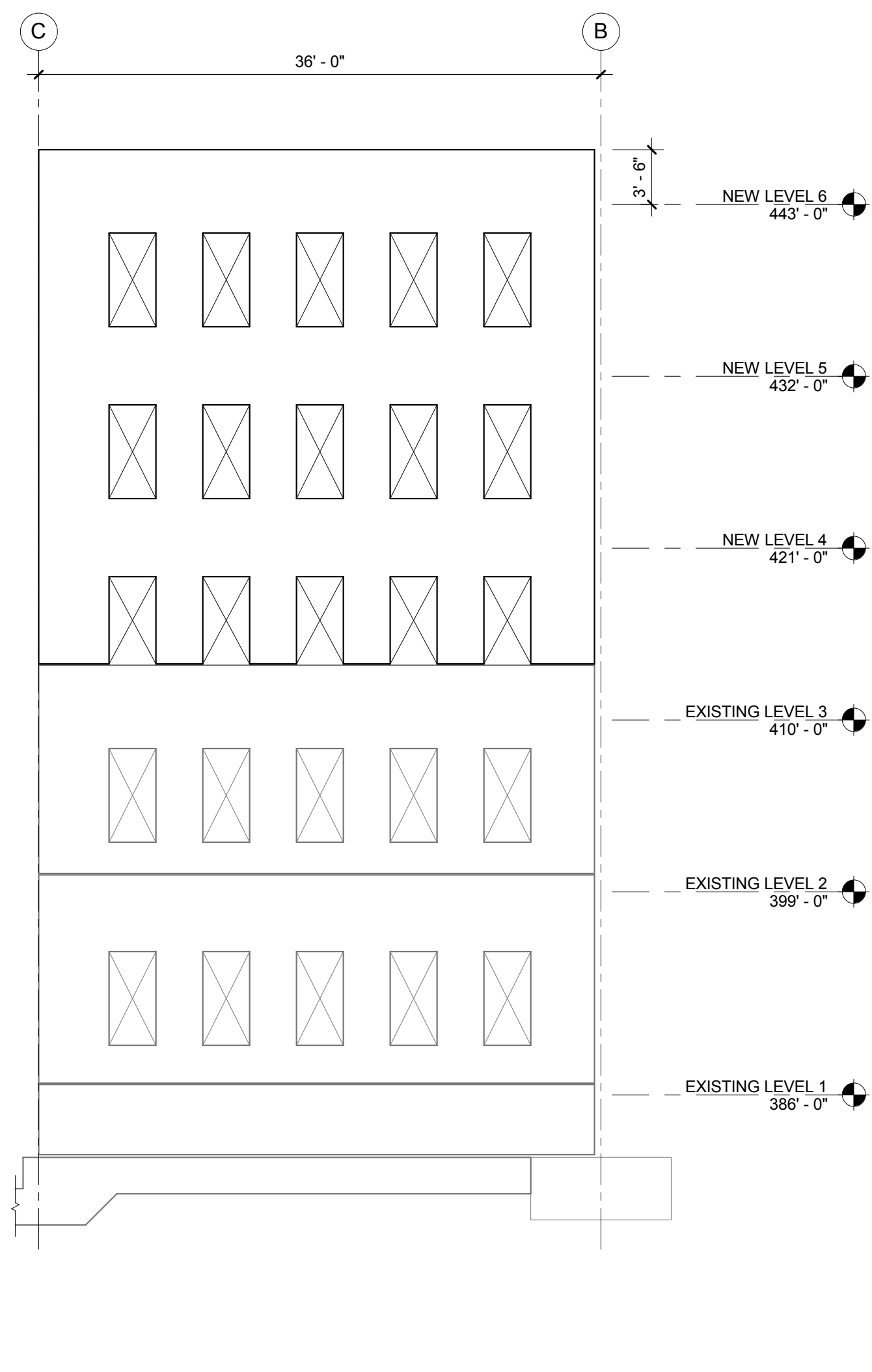
5 SHEARWALL ELEVATION GRID 3 - SW5  
SF201 1/8" = 1'-0"



6 SHEARWALL ELEVATION GRID 3 - SW6  
SF201 1/8" = 1'-0"

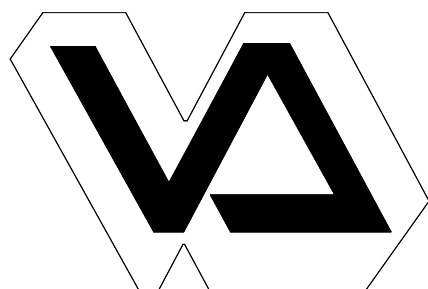


7 SHEARWALL ELEVATION GRID 2 - SW7  
SF201 1/8" = 1'-0"



8 SHEARWALL ELEVATION GRID 2 - SW8  
SF201 1/8" = 1'-0"

REVISION 1	08/05/2015
Revisions:	Date



Durham VAMC Dept. of Veterans Affairs  
508 Fulton Street  
Durham, NC 27705



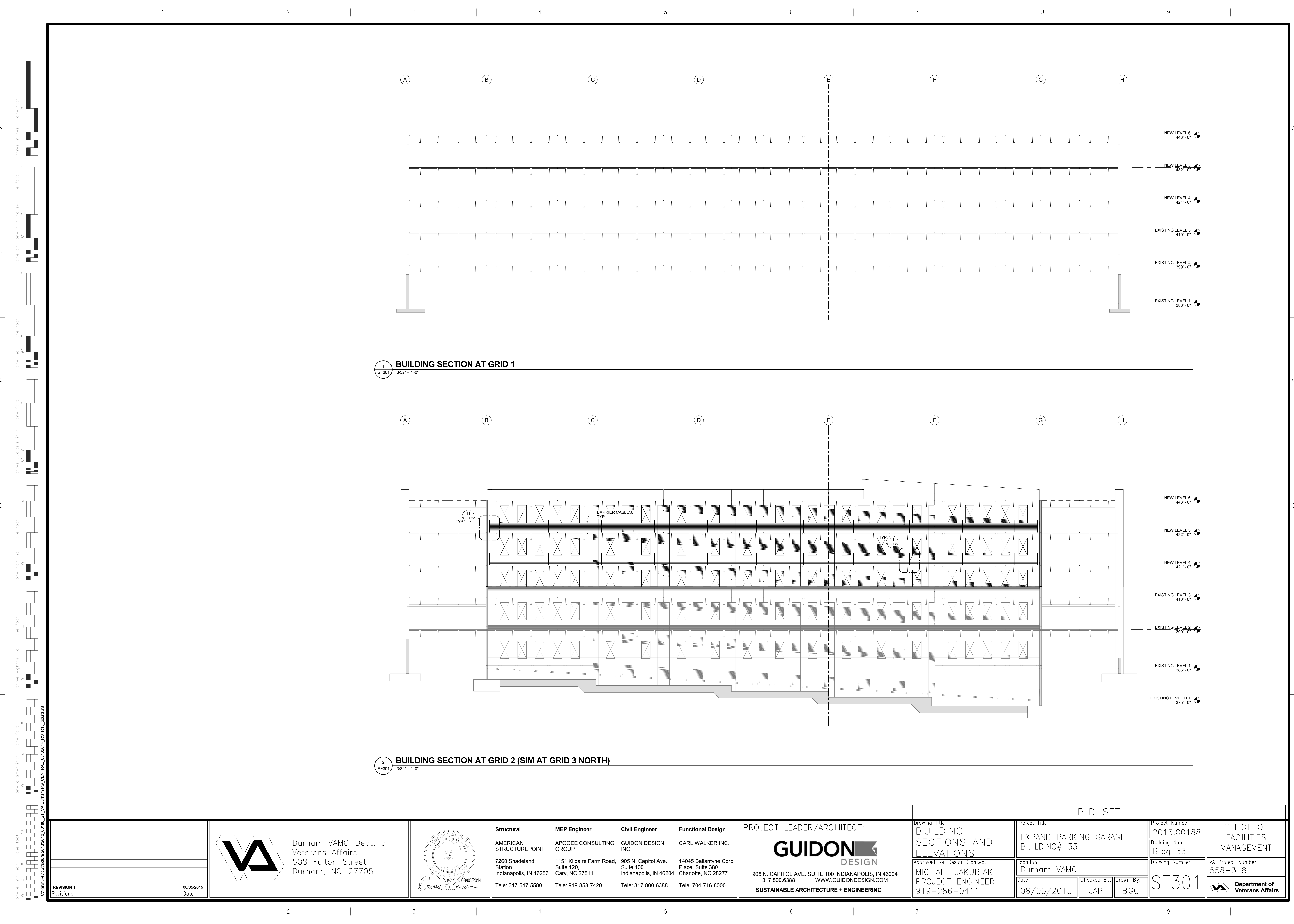
Structural	MEP Engineer	Civil Engineer	Functional Design
AMERICAN STRUCTUREPOINT 7260 Shadeland Station Indianapolis, IN 46256 Tele: 317-547-5580	APOGEE CONSULTING GROUP 1151 Kildaire Farm Road, Suite 120 Cary, NC 27511 Tele: 919-858-7420	GUIDON DESIGN INC. 905 N. Capitol Ave, Suite 100 Indianapolis, IN 46204 Tele: 317-800-6388	CARL WALKER INC. 14045 Ballantyne Corp. Place, Suite 380 Charlotte, NC 28277 Tele: 704-716-8000

PROJECT LEADER/ARCHITECT:

**GUIDON DESIGN**

905 N. CAPITOL AVE. SUITE 100 INDIANAPOLIS, IN 46204  
317.800.6388 WWW.GUIDONDESIGN.COM  
SUSTAINABLE ARCHITECTURE + ENGINEERING

BID SET					
Drawing Title SHEARWALL ELEVATIONS AND SCHEDULES	Project Title EXPAND PARKING GARAGE BUILDING# 33	Project Number 2013.00188	OFFICE OF FACILITIES MANAGEMENT		
Approved for Design Concept: MICHAEL JAKUBIAK PROJECT ENGINEER 919-286-0411	Location Durham VAMC	Building Number Bldg 33	Drawing Number SF201	VA Project Number 558-318	Department of Veterans Affairs
Date 08/05/2015	Checked By: JAP	Drawn By: BGC			

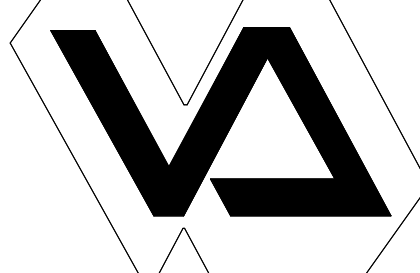
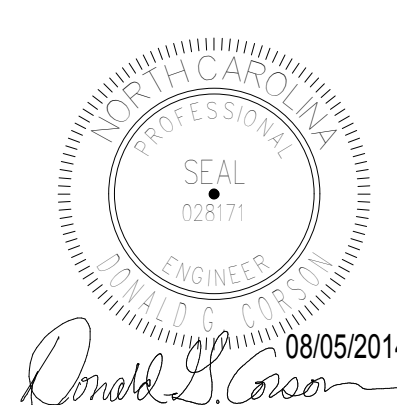






1  
SF301  
3/32" = 1'-0"

**BUILDING SECTION AT GRID 1**

2  
SF301  
3/32" = 1'-0"

**BUILDING SECTION AT GRID 2 (SIM AT GRID 3 NORTH)**

				BID SET																																																																
<div>REVISION 1</div> <div>Revisions:</div>		<div>08/05/2015</div> <div>Date</div>	<div></div> <div>Durham VAMC Dept. of Veterans Affairs 508 Fulton Street Durham, NC 27705</div>		<div></div>		<table><tr><td><b>Structural</b></td><td><b>MEP Engineer</b></td><td><b>Civil Engineer</b></td><td><b>Functional Design</b></td></tr><tr><td>AMERICAN STRUCTUREPOINT</td><td>APOGEE CONSULTING GROUP</td><td>GUIDON DESIGN INC.</td><td>CARL WALKER INC.</td></tr><tr><td>7260 Shadeland Station Indianapolis, IN 46256</td><td>1151 Kildaire Farm Road, Suite 120 Cary, NC 27511</td><td>905 N. Capitol Ave. Suite 100 Indianapolis, IN 46204</td><td>14045 Ballantyne Corp. Place, Suite 380 Charlotte, NC 28277</td></tr><tr><td>Tele: 317-547-5580</td><td>Tele: 919-858-7420</td><td>Tele: 317-800-6388</td><td>Tele: 704-716-8000</td></tr></table>	<b>Structural</b>	<b>MEP Engineer</b>	<b>Civil Engineer</b>	<b>Functional Design</b>	AMERICAN STRUCTUREPOINT	APOGEE CONSULTING GROUP	GUIDON DESIGN INC.	CARL WALKER INC.	7260 Shadeland Station Indianapolis, IN 46256	1151 Kildaire Farm Road, Suite 120 Cary, NC 27511	905 N. Capitol Ave. Suite 100 Indianapolis, IN 46204	14045 Ballantyne Corp. Place, Suite 380 Charlotte, NC 28277	Tele: 317-547-5580	Tele: 919-858-7420	Tele: 317-800-6388	Tele: 704-716-8000	<div>PROJECT LEADER/ARCHITECT:</div> <div></div> <div>905 N. CAPITOL AVE. SUITE 100 INDIANAPOLIS, IN 46204 317.800.6388 WWW.GUIDONDESIGN.COM</div> <div>SUSTAINABLE ARCHITECTURE + ENGINEERING</div>	<table><tr><td colspan="2">Drawing Title</td><td colspan="2">Project Title</td><td colspan="2">Project Number</td><td rowspan="2">OFFICE OF FACILITIES MANAGEMENT</td></tr><tr><td colspan="2">BUILDING SECTIONS AND ELEVATIONS</td><td colspan="2">EXPAND PARKING GARAGE BUILDING# 33</td><td colspan="3">2013.00188</td></tr><tr><td colspan="2">Approved for Design Concept:</td><td colspan="2">Location</td><td colspan="2">Drawing Number</td><td rowspan="2">VA Project Number 558-318</td></tr><tr><td colspan="2">MICHAEL JAKUBIAK PROJECT ENGINEER 919-286-0411</td><td colspan="2">Durham VAMC</td><td colspan="3">SF301</td></tr><tr><td colspan="2"></td><td>Date</td><td>Checked By:</td><td>Drawn By:</td><td colspan="2"></td><td rowspan="2"> Department of Veterans Affairs</td></tr><tr><td colspan="2"></td><td>08/05/2015</td><td>JAP</td><td>BGC</td><td colspan="2"></td></tr></table>	Drawing Title		Project Title		Project Number		OFFICE OF FACILITIES MANAGEMENT	BUILDING SECTIONS AND ELEVATIONS		EXPAND PARKING GARAGE BUILDING# 33		2013.00188			Approved for Design Concept:		Location		Drawing Number		VA Project Number 558-318	MICHAEL JAKUBIAK PROJECT ENGINEER 919-286-0411		Durham VAMC		SF301					Date	Checked By:	Drawn By:			 Department of Veterans Affairs			08/05/2015	JAP	BGC		
<b>Structural</b>	<b>MEP Engineer</b>	<b>Civil Engineer</b>	<b>Functional Design</b>																																																																	
AMERICAN STRUCTUREPOINT	APOGEE CONSULTING GROUP	GUIDON DESIGN INC.	CARL WALKER INC.																																																																	
7260 Shadeland Station Indianapolis, IN 46256	1151 Kildaire Farm Road, Suite 120 Cary, NC 27511	905 N. Capitol Ave. Suite 100 Indianapolis, IN 46204	14045 Ballantyne Corp. Place, Suite 380 Charlotte, NC 28277																																																																	
Tele: 317-547-5580	Tele: 919-858-7420	Tele: 317-800-6388	Tele: 704-716-8000																																																																	
Drawing Title		Project Title		Project Number		OFFICE OF FACILITIES MANAGEMENT																																																														
BUILDING SECTIONS AND ELEVATIONS		EXPAND PARKING GARAGE BUILDING# 33		2013.00188																																																																
Approved for Design Concept:		Location		Drawing Number		VA Project Number 558-318																																																														
MICHAEL JAKUBIAK PROJECT ENGINEER 919-286-0411		Durham VAMC		SF301																																																																
		Date	Checked By:	Drawn By:			 Department of Veterans Affairs																																																													
		08/05/2015	JAP	BGC																																																																