

three inches = one foot
one and one half inches = one foot
one inch = one foot
three quarters inch = one foot
one half inch = one foot
three eighths inch = one foot
one quarter inch = one foot
one eighth inch = one foot

B

- C



F



163



Scale: $1/16\text{th}'' = 1' 0''$



3

Revisions:



**MORRISON
MAIERLE, INC.**
An Employee-Owned Company
Engineers Scientists
Surveyors Planners

 Department of
Veterans Affairs

ROLLIE WELTY
SUPERVISORY GENERAL ENGINEER

Date 09/30/2015

G-002

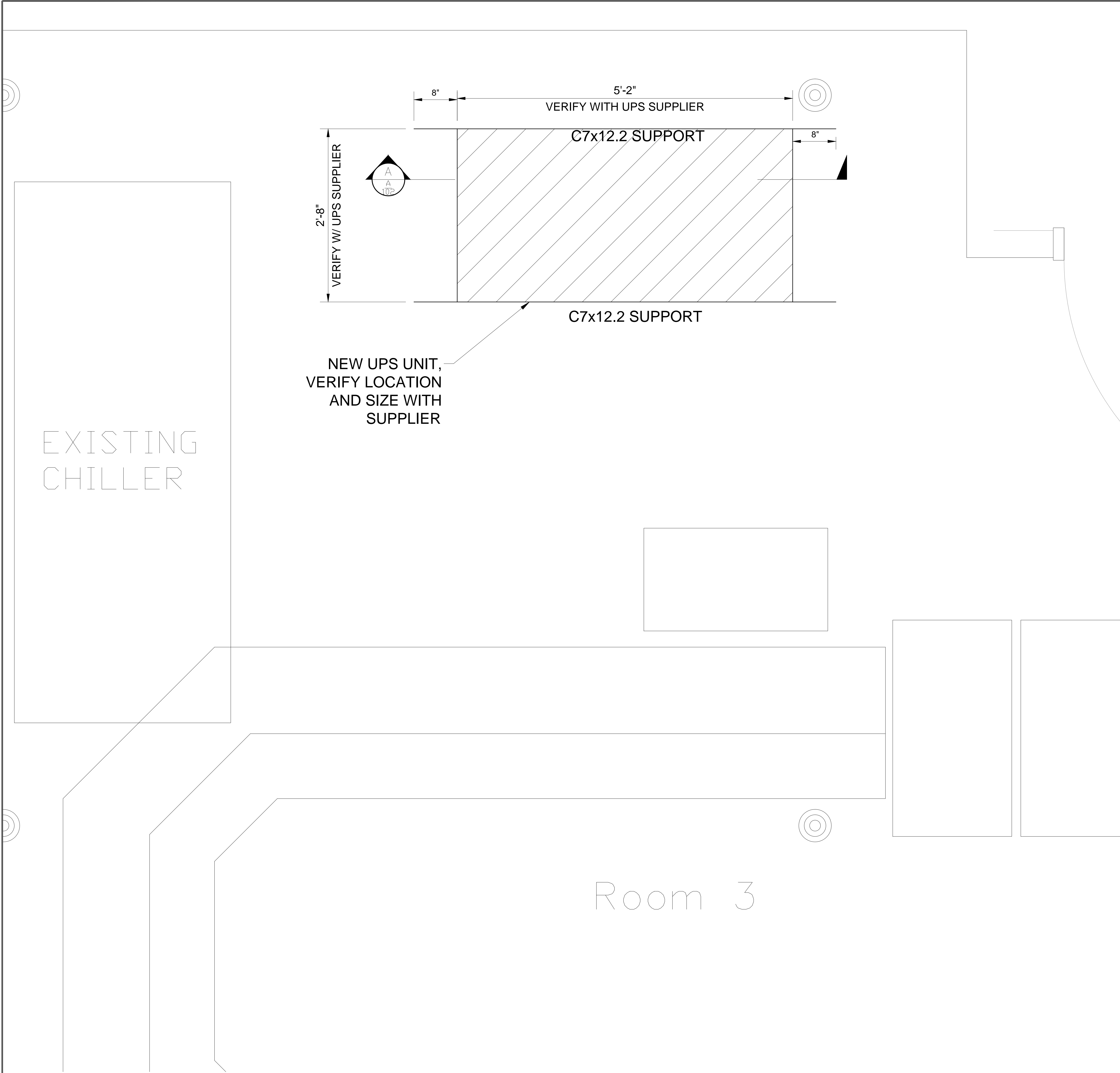
Dwg. 2 of 7

 Department of
Veterans Affairs

A compass rose with a circle divided into four quadrants by a vertical and a horizontal line. An arrow points upwards from the center, and the word "NORTH" is written vertically to the left of the arrow.

			CONSULTANTS:		ENGINEER:		Drawing Title		Project Title		Project Number		FOR CONSTRUCTION		
			 MORRISON MAIERLE, INC. <i>An Employee-Owned Company</i> Engineers Scientists Surveyors Planners		 JD Engineering, PC 3911 25th Hammond, IN 46324 (219) 931-0000 jdmec@jdmec.com		 VCI Project Management Construction Management Engineering		CONCRETE		EXPAND IT AND ELECTRICAL UPS		666-16-114		SHERIDAN, WY DEPARTMENT OF VETERANS AFFAIRS
				 Disabled Veteran Owned Small Business		 Department of Veterans Affairs		Approved Project Director ROLLIE WELTY SUPERVISORY GENERAL ENGINEER		Location SHERIDAN, WYOMING		Drawing Number A-101		SHERIDAN, WY VETERANS AFFAIRS HEALTHCARE SYSTEM	
										Date 09/30/2015		Checked WELTY		Drawn JSB	
												Dwg. 3 of 7		 Department of Veterans Affairs	
Revisions:		Date													

three inches = one foot
one and one half inches = one foot
one inch = one foot
three quarters inch = one foot
three eighths inch = one foot
one quarter inch = one foot
one eighth inch = one foot



INDEX

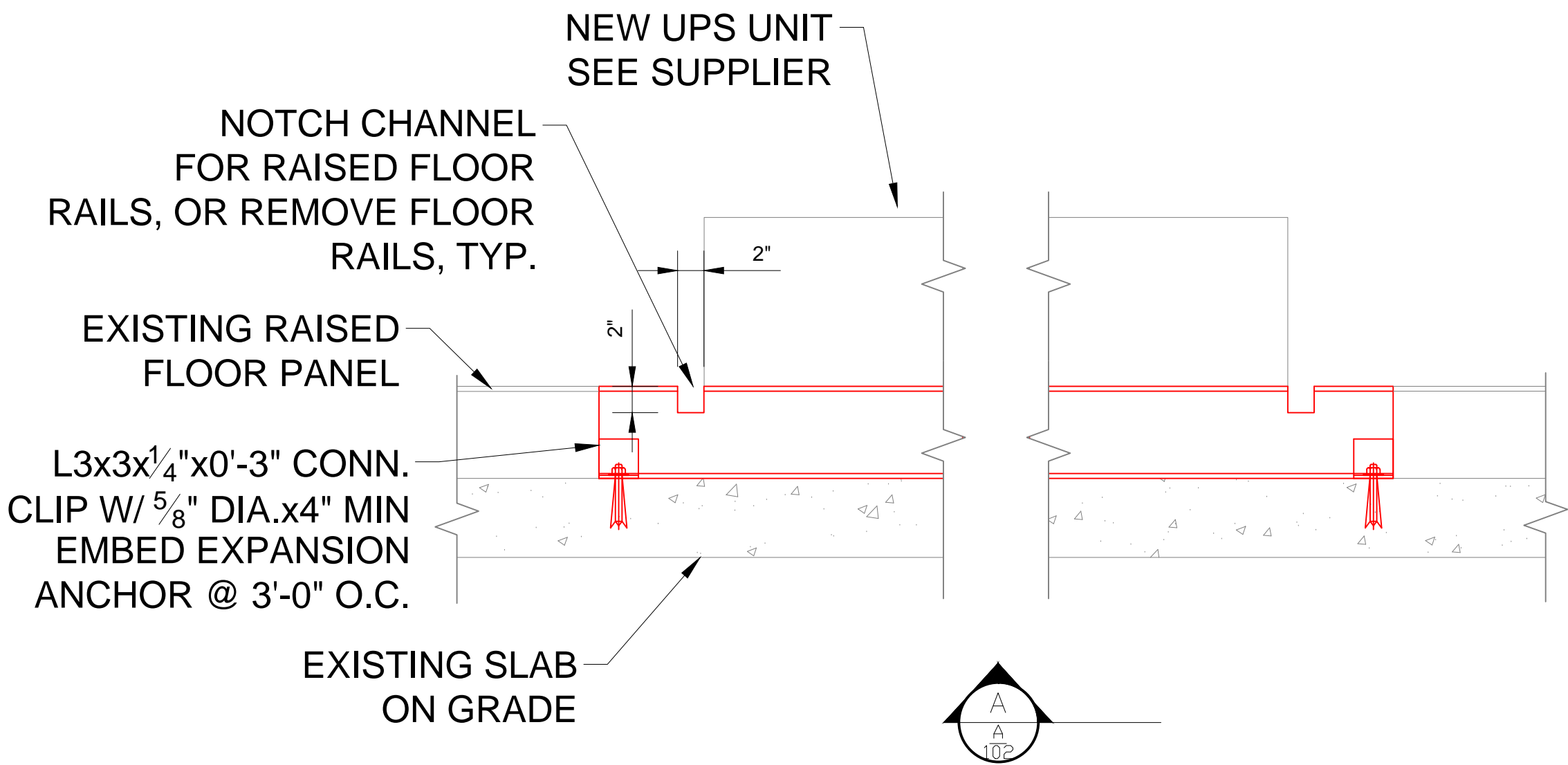
- DOOR
- NEW WORK
- EXISTING WORK

UPS FLOOR SUPPORT PLAN NOTES

Scale: 1" = 8"

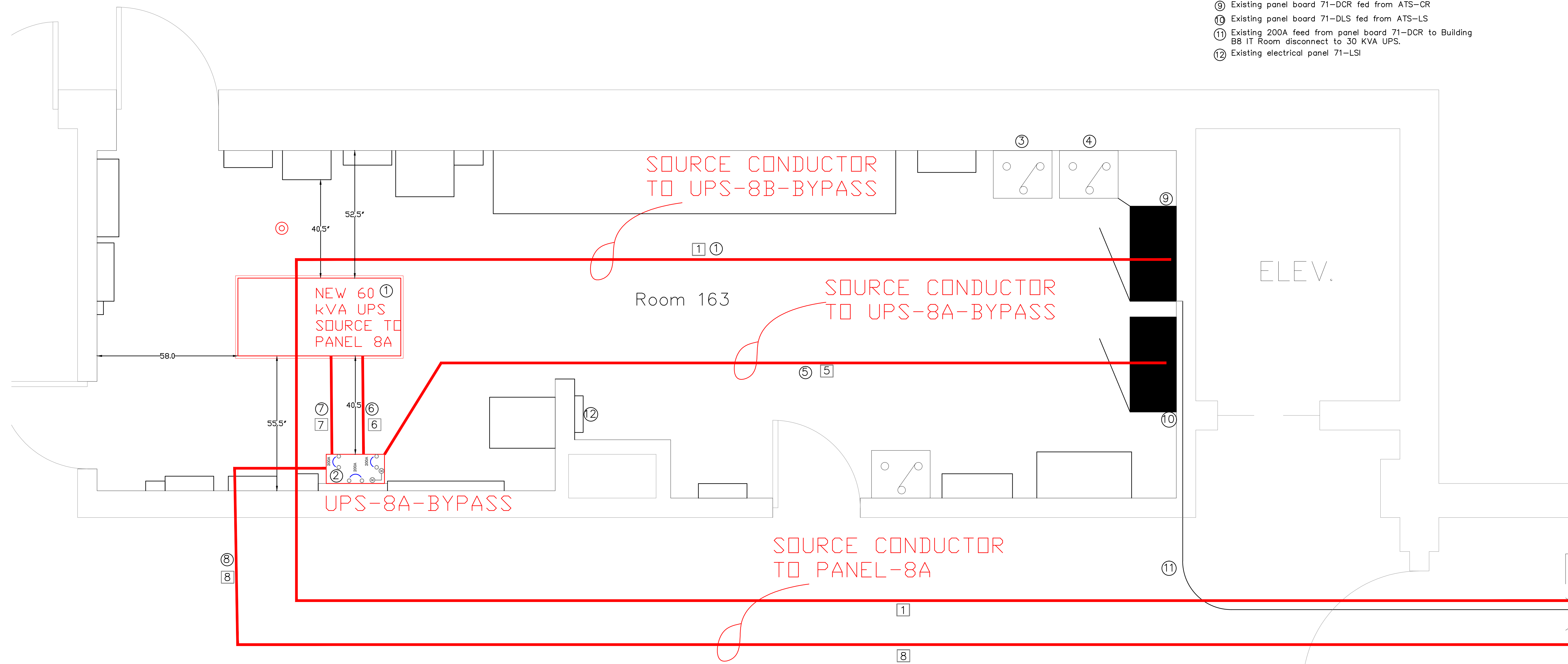
- Method of support and dimensions of raised floor support will vary and depend on the UPS selected.
- Verify all existing dimensions and conditions. Verify size of UPS unit with supplier and installer.
- Coordinate size and length of channel with UPS supplier. UPS shall be continuously supported per manufacture's specs.
- Support and attach the UPS to the channes and the raised floor per the manufacture's specification.

Sample Raised Floor B8 IT RM 3 Structural Detail



Revisions		Date		CONSULTANTS:		ENGINEER:		Drawing Title		Project Title		Project Number		FOR CONSTRUCTION	
				MORRISON MAIERLE, INC. An Employee-Owned Company Engineers Scientists Surveyors Planners		SHERIDAN, WY DEPARTMENT OF VETERANS AFFAIRS		UPS FLOOR SUPPORT DETAILS- BUILDING 8 IT ROOM		EXPAND IT AND ELECTRICAL UPS		666-16-114		SHERIDAN, WY VETERANS AFFAIRS HEALTHCARE SYSTEM	
				JD Engineering, PC 5711 72nd Avenue Henderson, NV 89051 jden@jden.com		VCI Project Management Construction Management Engineering		Approved: Project Director		Location SHERIDAN, WYOMING		Building Number 8		Department of Veterans Affairs	
				SDVOSB Disability Veteran Owned Small Business cVE		Department of Veterans Affairs		ROLLIE WELTY SUPERVISORY GENERAL ENGINEER		Date 09/30/2015		Checked WELTY		Drawn JSB	
												Drawing Number A-102		Dwg. 4 of 7	

CONDUCTOR SCHEDULE									
FEEDER NUMBER	SOURCE PANEL (SIZE)	LOAD PANEL (SIZE)	VOLTAGE (V)	FEEDER CAPACITY (A)	CONDUIT SIZE - TYPE	CONDUCTOR			APPROX. CIRCUIT LENGTH (ft)
						PHASE	NEUTRAL	GROUNDING	
[1]	71-DCR (400A)	UPS-8B-BYPASS (200A)	208/120	209A	3 1/2" - IMC	3 x 350KCMIL	1 x 350KCMIL	1 x #3AWG	407
[2]	UPS-8B-BYPASS (200A)	UPS-8B	208/120	209A	3" - IMC	3 x 4/0 AWG	1 x 4/0 AWG	1 x #3AWG	5
[3]	UPS-8B	UPS-8B-BYPASS (200A)	208/120	209A	3" - IMC	3 x 4/0 AWG	1 x 4/0 AWG	1 x #3AWG	5
[4]	UPS-8B-BYPASS (200A)	PANEL 8B	208/120	209A	3 - IMC	3 x 4/0 AWG	1 x 4/0 AWG	1 x #3AWG	26
[5]	71-DLS (400A)	UPS-8A-BYPASS (200A)	208/120	209A	3 1/2" - IMC	3 x 350KCMIL	1 x 350KCMIL	1 x #3AWG	30
[6]	UPS-8A-BYPASS (200A)	UPS-8A	208/120	209A	3 1/2" - IMC	3 x 350KCMIL	1 x 350KCMIL	1 x #3AWG	5
[7]	UPS-8A	UPS-8A-BYPASS (200A)	208/120	209A	3 1/2" - IMC	3 x 350KCMIL	1 x 350KCMIL	1 x #3AWG	5
[8]	UPS-8A-BYPASS (200A)	PANEL 8A	208/120	209A	3 1/2" - IMC	3 x 350KCMIL	1 x 350KCMIL	1 x #3AWG	365



INDEX

PLAN NOTES

- ① Provide and install new 60 kVA UPS in B71 RM 163 as per the specs and provide and install new wire and conduit (200A feed) from panel 71-DCR to UPS=BB maintenance by-pass switch, feeder #1.
- ② Provide and install a new UPS=8A maintenance by-pass switch in B71 RM 163 as per the specs.
- ③ Existing ATS-LS fed from 71 GEN & 71 LS
- ④ Existing ATS-CR fed from 71 GEN & 71 CR
- ⑤ Install new wire and conduit (200A feed) from panel 71-DLS to UPS=8A maintenance by-pass switch, feeder #5.
- ⑥ Install new wire and conduit (200A feed) from maintenance by-pass switch to UPS (NON=CONDITIONED ELECTRIC), feeder #6.
- ⑦ Install new wire and conduit (200A feed) from UPS to maintenance by-pass switch (CONDITIONED ELECTRIC), feeder #7.
- ⑧ Install new wire and conduit (200A feed) from UPS to Building BB IT Room panel 8A. Wire and conduit to be ran underneath tramway where other electrical is ran, feeder #8.
- ⑨ Existing panel board 71-DCR fed from ATS-CR
- ⑩ Existing panel board 71-DLS fed from ATS-LS
- ⑪ Existing 200A feed from panel board 71-DCR to Building BB IT Room disconnect to 30 KVA UPS.
- ⑫ Existing electrical panel 71-LSI

[illegible]

CONSULTANTS:



VCI Project Management
Construction Management
Engineering

ENGINEER:

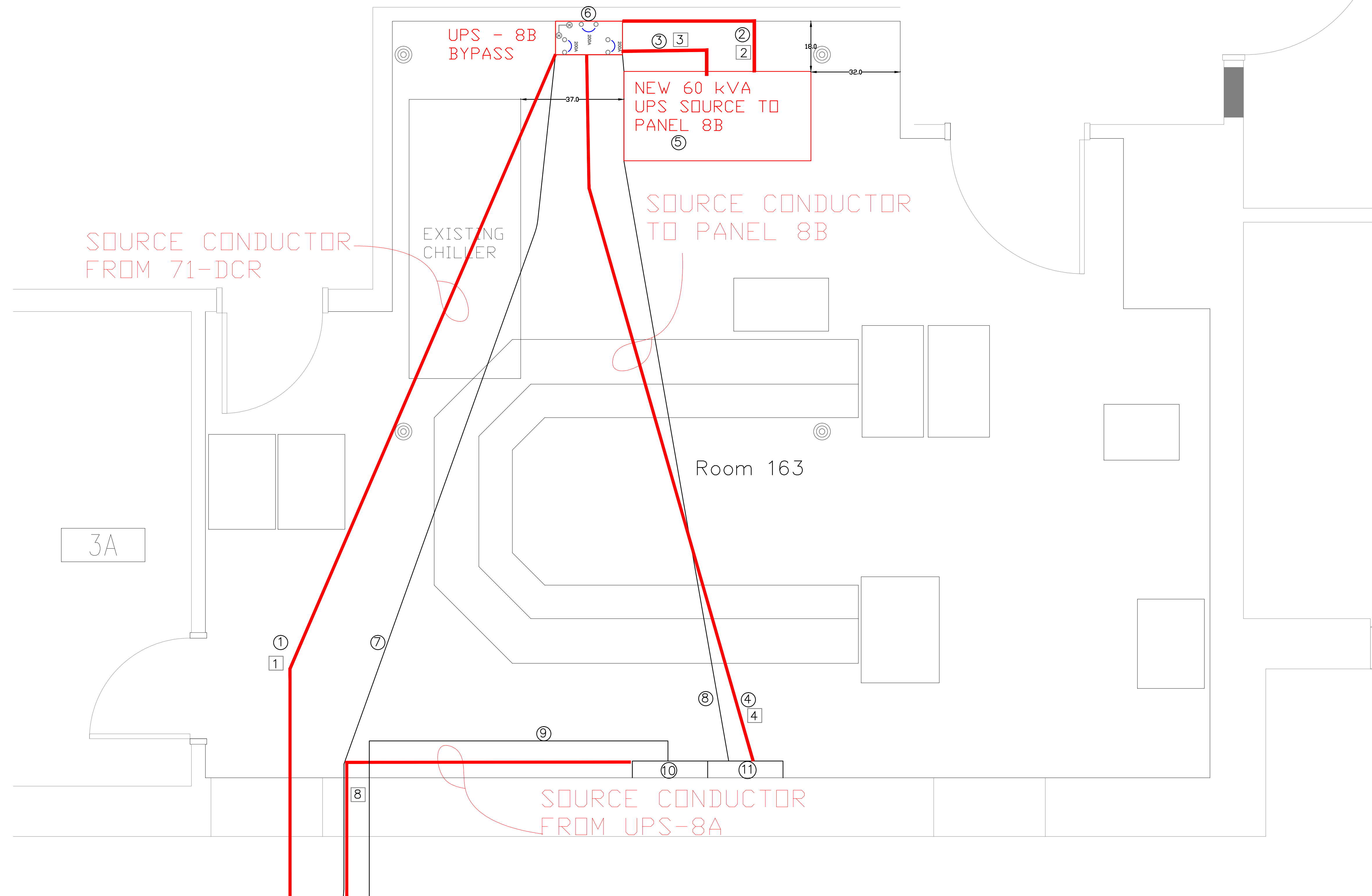
	Drawing Title
--	---------------

	Project Title
--	---------------

Project Number	666-16-118
----------------	------------

FOR CONSTRUCTION

CONDUCTOR SCHEDULE									
FEEDER NUMBER	SOURCE PANEL (SIZE)	LOAD PANEL (SIZE)	VOLTAGE (V)	FEEDER CAPACITY (A)	CONDUIT SIZE - TYPE	CONDUCTOR			APPROX. CIRCUIT LENGTH (ft)
						PHASE	NEUTRAL	GROUNDING	
[1]	71-DCR (400A)	UPS-8B-BYPASS (200A)	208/120	209A	3 1/2" - IMC	3 x 350KCMIL	1 x 350KCMIL	1 x #3AWG	407
[2]	UPS-8B-BYPASS (200A)	UPS-8B	208/120	209A	3" - IMC	3 x 4/0 AWG	1 x 4/0 AWG	1 x #3AWG	5
[3]	UPS-8B	UPS-8B-BYPASS (200A)	208/120	209A	3" - IMC	3 x 4/0 AWG	1 x 4/0 AWG	1 x #3AWG	5
[4]	UPS-8B-BYPASS (200A)	PANEL 8B	208/120	209A	3 - IMC	3 x 4/0 AWG	1 x 4/0 AWG	1 x #3AWG	26
[5]	71-DLS (400A)	UPS-8A-BYPASS (200A)	208/120	209A	3 1/2" - IMC	3 x 350KCMIL	1 x 350KCMIL	1 x #3AWG	30
[6]	UPS-8A-BYPASS (200A)	UPS-8A	208/120	209A	3 1/2" - IMC	3 x 350KCMIL	1 x 350KCMIL	1 x #3AWG	5
[7]	UPS-8A	UPS-8A-BYPASS (200A)	208/120	209A	3 1/2" - IMC	3 x 350KCMIL	1 x 350KCMIL	1 x #3AWG	5
[8]	UPS-8A-BYPASS (200A)	PANEL 8A	208/120	209A	3 1/2" - IMC	3 x 350KCMIL	1 x 350KCMIL	1 x #3AWG	365



INDEX

PLAN NOTES[illegible]

CONSULTANTS:



VCI Project Management
Construction Management
Engineering

ENGINEER:

SHERIDAN, WY
DEPARTMENT OF VETERANS AFFAIRS



	Drawing Title
--	---------------

ELECTRICAL DETAILS-
BUILDING 8 IT ROOM

Approved: Project Director

ROLLIE WELTY
SUPERVISORY GENERAL ENGINEER

Project Title

EXPAND IT AND
ELECTRICAL UPS

Location	SHERIDAN WYOMING
----------	------------------

Date 09/30/2015

WYOMING	Checked
	WELTY

Drawn	JSB
-------	-----

Project Number
666-16-114

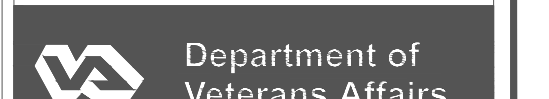
Building Number	8
-----------------	---

	Drawing Number

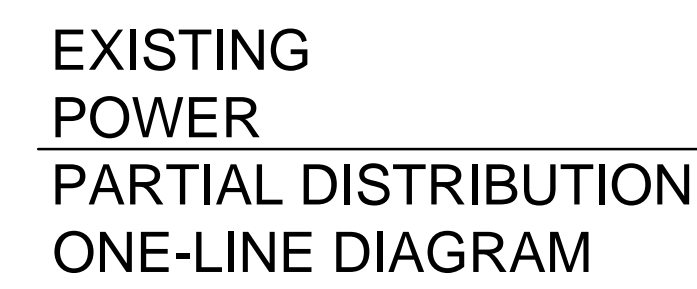
E-102

FOR CONSTRUCTION

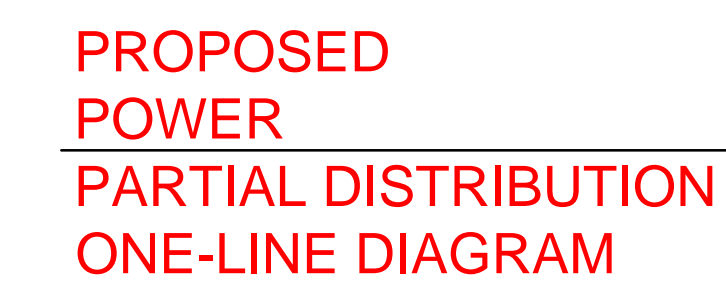
SHERIDAN, WY
VETERANS AFFAIRS
HEALTHCARE
SYSTEM



— NEW WORK
— EXISTING WORK



CONDUCTOR SCHEDULE							
FEEDER NUMBER	VOLTAGE (V)	FDR CAPACITY (A)	CONDUIT SIZE - TYPE	CONDUCTOR			APPROX. CIRCUIT LENGTH (ft)
				PHASE	NEUTRAL	GROUNDING	
1	208/120	209A	3 1/2" - IMC	3 x 350KCMIL	1 x 350KCMIL	1 x #3AWG	407
2	208/120	209A	3" - IMC	3 x 4/0KCMIL	1 x 4/0KCMIL	1 x #3AWG	5
3	208/120	209A	3" - IMC	3 x 4/0KCMIL	1 x 4/0KCMIL	1 x #3AWG	5
4	208/120	209A	3" - IMC	3 x 4/0KCMIL	1 x 4/0KCMIL	1 x #3AWG	20
5	208/120	209A	3 1/2" - IMC	3 x 350KCMIL	1 x 350KCMIL	1 x #3AWG	30
6	208/120	209A	3 1/2" - IMC	3 x 350KCMIL	1 x 350KCMIL	1 x #3AWG	5
7	208/120	209A	3 1/2" - IMC	3 x 350KCMIL	1 x 350KCMIL	1 x #3AWG	5
8	208/120	209A	3 1/2" - IMC	3 x 350KCMIL	1 x 350KCMIL	1 x #3AWG	365

[illegible]