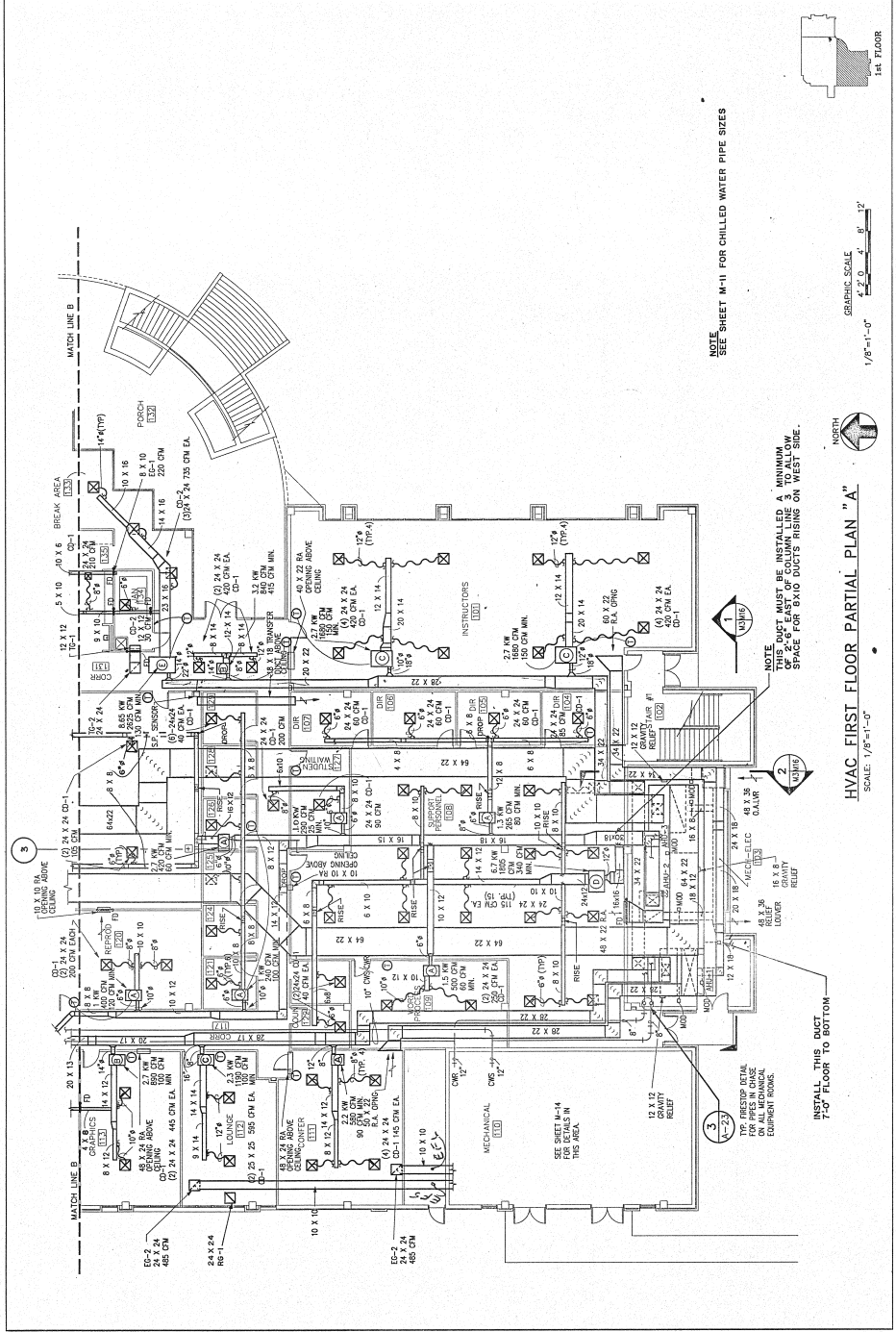


PROJECT: HVAC FIRST FLOOR PARTIAL PLAN "A"	DATE: 11/17/17	DESIGNER: J. W. BROWN
CLIENT: ETA SCHOOL APPLIED INST BLDG	LOCATION: OKLAHOMA	SCALE: 1/8"=1'-0"
ARCHITECT: SOUTHERN DESIGN GROUP	ENGINEER: SOUTHERN DESIGN GROUP	MECHANICAL: SOUTHERN DESIGN GROUP
PREP BY: DATE: APPROV: [Signature]	REV. DESCRIPTION:	REVISIONS:
DATE: 11/17/17	NO. 1	DESCRIPTION
DATE: 11/17/17	NO. 2	DESCRIPTION
DATE: 11/17/17	NO. 3	DESCRIPTION
DATE: 11/17/17	NO. 4	DESCRIPTION
DATE: 11/17/17	NO. 5	DESCRIPTION



NOTE: SEE SHEET M-11 FOR CHILLED WATER PIPE SIZES

NOTE: DUCT MUST BE INSTALLED A MINIMUM OF 1" ABOVE THE CEILING AND 1" BELOW THE FLOOR JOIST SPACE FOR EXID DUCTS RISING ON WEST SIDE.

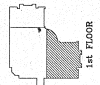
INSTALL THIS DUCT 7'-0" FLOOR TO BOTTOM

HVAC FIRST FLOOR PARTIAL PLAN "A"

SCALE: 1/8"=1'-0"



GRAPHIC SCALE
1" = 0' 4" 8" 12"



M-5