

# DEPARTMENT OF VETERANS AFFAIRS

## MED GAS REPAIRS

SALT LAKE CITY VETERANS MEDICAL CENTER

500 FOOTHILL DRIVE

SALT LAKE CITY, UTAH

CONSTRUCTION DOCUMENTS

PROJECT NO. 660-12-82S

JUNE 12, 2015



REGIONAL MAP



VICINITY

— PROJECT SITE

### DRAWING INDEX

NO.	DESCRIPTION	DATE	BY	CHKD.
001	COVER SHEET			
002	DRAWING INDEX			
003	REGIONAL MAP			
004	VICINITY MAP			
005	PROJECT SITE			
006	GENERAL NOTES			
007	EXISTING CONDITIONS			
008	PROPOSED CONDITIONS			
009	CONSTRUCTION DETAILS			
010	CONSTRUCTION DETAILS			
011	CONSTRUCTION DETAILS			
012	CONSTRUCTION DETAILS			
013	CONSTRUCTION DETAILS			
014	CONSTRUCTION DETAILS			
015	CONSTRUCTION DETAILS			
016	CONSTRUCTION DETAILS			
017	CONSTRUCTION DETAILS			
018	CONSTRUCTION DETAILS			
019	CONSTRUCTION DETAILS			
020	CONSTRUCTION DETAILS			

### CONSULTANTS

### ARCHITECT/ENGINEERS

### PROJECT TITLE

### PROJECT NUMBER

### PROJECT LOCATION

### PROJECT DATE

### PROJECT STATUS

### PROJECT COMMENTS

### PROJECT NOTES

### PROJECT DETAILS

### PROJECT SPECIFICATIONS

### PROJECT STANDARDS

### PROJECT REFERENCES

### PROJECT CONTACTS

### PROJECT APPROVALS

### PROJECT SIGNATURES

### PROJECT DATES

### PROJECT TIMES

### PROJECT PLACES

### PROJECT PEOPLE

### PROJECT THINGS

### PROJECT IDEAS

### PROJECT FEELINGS

### PROJECT BELIEFS

### PROJECT VALUES

### PROJECT PRINCIPLES

### PROJECT LAWS

### PROJECT CUSTOMS

### PROJECT TRADITIONS

### PROJECT RITUALS

### PROJECT SYMBOLS

### PROJECT MARKS

### PROJECT SIGNS

### PROJECT MONUMENTS

### PROJECT MEMORIALS

### PROJECT MUSEUMS

### PROJECT GALLERIES

### PROJECT THEATERS

### PROJECT CINEMAS

### PROJECT STADIUMS

### PROJECT ARENAS

### PROJECT PALACES

### PROJECT TEMPLES

### PROJECT CHURCHES

### PROJECT MOSQUES

### PROJECT SYNAGOGUES

### PROJECT TEMPLES

### PROJECT CHURCHES

### PROJECT MOSQUES

### PROJECT SYNAGOGUES

### PROJECT TEMPLES

### PROJECT CHURCHES

### PROJECT MOSQUES

### PROJECT SYNAGOGUES

### PROJECT TEMPLES

### PROJECT CHURCHES

### PROJECT MOSQUES

### PROJECT SYNAGOGUES

### PROJECT TEMPLES

### PROJECT CHURCHES

### PROJECT MOSQUES

### PROJECT SYNAGOGUES

### PROJECT TEMPLES

### PROJECT CHURCHES

### PROJECT MOSQUES

### PROJECT SYNAGOGUES

### PROJECT TEMPLES

### PROJECT CHURCHES

### PROJECT MOSQUES

### PROJECT SYNAGOGUES

### PROJECT TEMPLES

### PROJECT CHURCHES

### PROJECT MOSQUES

### PROJECT SYNAGOGUES

### PROJECT TEMPLES

### PROJECT CHURCHES

### PROJECT MOSQUES

### PROJECT SYNAGOGUES

### PROJECT TEMPLES

### PROJECT CHURCHES

### PROJECT MOSQUES

### PROJECT SYNAGOGUES

### PROJECT TEMPLES

### PROJECT CHURCHES

### PROJECT MOSQUES

### PROJECT SYNAGOGUES

### PROJECT TEMPLES

### PROJECT CHURCHES

### PROJECT MOSQUES

### PROJECT SYNAGOGUES

### PROJECT TEMPLES

### PROJECT CHURCHES

### PROJECT MOSQUES

### PROJECT SYNAGOGUES

### PROJECT TEMPLES

### PROJECT CHURCHES

### PROJECT MOSQUES

### PROJECT SYNAGOGUES

### PROJECT TEMPLES

### PROJECT CHURCHES

### PROJECT MOSQUES

### PROJECT SYNAGOGUES

### PROJECT TEMPLES

### PROJECT CHURCHES

### PROJECT MOSQUES

### PROJECT SYNAGOGUES

### PROJECT TEMPLES

### PROJECT CHURCHES

### PROJECT MOSQUES

### PROJECT SYNAGOGUES

### PROJECT TEMPLES

### PROJECT CHURCHES

### PROJECT MOSQUES

### PROJECT SYNAGOGUES

### PROJECT TEMPLES

### PROJECT CHURCHES

### PROJECT MOSQUES

### PROJECT SYNAGOGUES

### PROJECT TEMPLES

### PROJECT CHURCHES

### PROJECT MOSQUES

### PROJECT SYNAGOGUES

### PROJECT TEMPLES

### PROJECT CHURCHES

### PROJECT MOSQUES

### PROJECT SYNAGOGUES

### PROJECT TEMPLES

### PROJECT CHURCHES

### PROJECT MOSQUES

### PROJECT SYNAGOGUES

### PROJECT TEMPLES

### PROJECT CHURCHES

### PROJECT MOSQUES

### PROJECT SYNAGOGUES

### PROJECT TEMPLES

### PROJECT CHURCHES

### PROJECT MOSQUES

### PROJECT SYNAGOGUES

### PROJECT TEMPLES

### PROJECT CHURCHES

### PROJECT MOSQUES

### PROJECT SYNAGOGUES

### PROJECT TEMPLES

### PROJECT CHURCHES

### PROJECT MOSQUES

### PROJECT SYNAGOGUES

### PROJECT TEMPLES

### PROJECT CHURCHES

### PROJECT MOSQUES

### PROJECT SYNAGOGUES

### PROJECT TEMPLES

### PROJECT CHURCHES

### PROJECT MOSQUES

### PROJECT SYNAGOGUES

### PROJECT TEMPLES

### PROJECT CHURCHES

### PROJECT MOSQUES

### PROJECT SYNAGOGUES

### PROJECT TEMPLES

### PROJECT CHURCHES

### PROJECT MOSQUES

### PROJECT SYNAGOGUES

### PROJECT TEMPLES

### PROJECT CHURCHES

### PROJECT MOSQUES

### PROJECT SYNAGOGUES

### PROJECT TEMPLES

### PROJECT CHURCHES

### PROJECT MOSQUES

### PROJECT SYNAGOGUES

### PROJECT TEMPLES

### PROJECT CHURCHES

### PROJECT MOSQUES

### PROJECT SYNAGOGUES

### PROJECT TEMPLES

### PROJECT CHURCHES

### PROJECT MOSQUES

### PROJECT SYNAGOGUES

### PROJECT TEMPLES

### PROJECT CHURCHES

### PROJECT MOSQUES

### PROJECT SYNAGOGUES

### PROJECT TEMPLES

### PROJECT CHURCHES

### PROJECT MOSQUES

### PROJECT SYNAGOGUES

### PROJECT TEMPLES

### PROJECT CHURCHES

### PROJECT MOSQUES

### PROJECT SYNAGOGUES

### PROJECT TEMPLES

### PROJECT CHURCHES

### PROJECT MOSQUES

### PROJECT SYNAGOGUES

### PROJECT TEMPLES

### PROJECT CHURCHES

### PROJECT MOSQUES

### PROJECT SYNAGOGUES

### PROJECT TEMPLES

### PROJECT CHURCHES

### PROJECT MOSQUES

### PROJECT SYNAGOGUES

### PROJECT TEMPLES

### PROJECT CHURCHES

### PROJECT MOSQUES

### PROJECT SYNAGOGUES

### PROJECT TEMPLES

### PROJECT CHURCHES

### PROJECT MOSQUES

### PROJECT SYNAGOGUES

### PROJECT TEMPLES

### PROJECT CHURCHES

### PROJECT MOSQUES

### PROJECT SYNAGOGUES

### PROJECT TEMPLES

### PROJECT CHURCHES

### PROJECT MOSQUES

### PROJECT SYNAGOGUES

### PROJECT TEMPLES

### PROJECT CHURCHES

### PROJECT MOSQUES

### PROJECT SYNAGOGUES

### PROJECT TEMPLES

### PROJECT CHURCHES

### PROJECT MOSQUES

### PROJECT SYNAGOGUES

### PROJECT TEMPLES

### PROJECT CHURCHES

### PROJECT MOSQUES

### PROJECT SYNAGOGUES

### PROJECT TEMPLES

# INFECTION CONTROL RISK ASSESSMENT FOR CONSTRUCTION MAINTENANCE

**Project Information:**  
 Project Name: **SALE LANE CITY HEALTH SYSTEM**  
 Project Number: **000-0000**  
 Project Location: **SALE LANE CITY, ILLINOIS**  
 Project Start Date: **06/01/2015**  
 Project End Date: **06/30/2015**  
 Project Manager: **CHRISTOPHER J. BROWN**  
 Project Sponsor: **SALE LANE CITY HEALTH SYSTEM**

**Assessment Information:**  
 Assessment Date: **06/01/2015**  
 Assessment Time: **09:00 AM**  
 Assessment Location: **SALE LANE CITY HEALTH SYSTEM**  
 Assessment Type: **CONSTRUCTION MAINTENANCE**  
 Assessment Scope: **ALL AREAS**

**Assessment Results:**  
 Overall Risk Level: **LOW**  
 Risk Category: **LOW**  
 Risk Score: **10**  
 Risk Rating: **10**  
 Risk Description: **Low risk of infection control issues during construction maintenance.**

**INFECTION CONTROL RISK ASSESSMENT FOR CONSTRUCTION MAINTENANCE**

**Project Information:**  
 Project Name: **SALE LANE CITY HEALTH SYSTEM**  
 Project Number: **000-0000**  
 Project Location: **SALE LANE CITY, ILLINOIS**  
 Project Start Date: **06/01/2015**  
 Project End Date: **06/30/2015**  
 Project Manager: **CHRISTOPHER J. BROWN**  
 Project Sponsor: **SALE LANE CITY HEALTH SYSTEM**

**Assessment Information:**  
 Assessment Date: **06/01/2015**  
 Assessment Time: **09:00 AM**  
 Assessment Location: **SALE LANE CITY HEALTH SYSTEM**  
 Assessment Type: **CONSTRUCTION MAINTENANCE**  
 Assessment Scope: **ALL AREAS**

**Assessment Results:**  
 Overall Risk Level: **LOW**  
 Risk Category: **LOW**  
 Risk Score: **10**  
 Risk Rating: **10**  
 Risk Description: **Low risk of infection control issues during construction maintenance.**

**INFECTION CONTROL RISK ASSESSMENT FOR CONSTRUCTION MAINTENANCE**

**Project Information:**  
 Project Name: **SALE LANE CITY HEALTH SYSTEM**  
 Project Number: **000-0000**  
 Project Location: **SALE LANE CITY, ILLINOIS**  
 Project Start Date: **06/01/2015**  
 Project End Date: **06/30/2015**  
 Project Manager: **CHRISTOPHER J. BROWN**  
 Project Sponsor: **SALE LANE CITY HEALTH SYSTEM**

**Assessment Information:**  
 Assessment Date: **06/01/2015**  
 Assessment Time: **09:00 AM**  
 Assessment Location: **SALE LANE CITY HEALTH SYSTEM**  
 Assessment Type: **CONSTRUCTION MAINTENANCE**  
 Assessment Scope: **ALL AREAS**

**Assessment Results:**  
 Overall Risk Level: **LOW**  
 Risk Category: **LOW**  
 Risk Score: **10**  
 Risk Rating: **10**  
 Risk Description: **Low risk of infection control issues during construction maintenance.**

**INFECTION CONTROL RISK ASSESSMENT FOR CONSTRUCTION MAINTENANCE**

**Project Information:**  
 Project Name: **SALE LANE CITY HEALTH SYSTEM**  
 Project Number: **000-0000**  
 Project Location: **SALE LANE CITY, ILLINOIS**  
 Project Start Date: **06/01/2015**  
 Project End Date: **06/30/2015**  
 Project Manager: **CHRISTOPHER J. BROWN**  
 Project Sponsor: **SALE LANE CITY HEALTH SYSTEM**

**Assessment Information:**  
 Assessment Date: **06/01/2015**  
 Assessment Time: **09:00 AM**  
 Assessment Location: **SALE LANE CITY HEALTH SYSTEM**  
 Assessment Type: **CONSTRUCTION MAINTENANCE**  
 Assessment Scope: **ALL AREAS**

**Assessment Results:**  
 Overall Risk Level: **LOW**  
 Risk Category: **LOW**  
 Risk Score: **10**  
 Risk Rating: **10**  
 Risk Description: **Low risk of infection control issues during construction maintenance.**

**CONSULTANTS:**

**ARCHITECT/ENGINEERS:**

**RISK ASSESSMENT:**

**PROJECT TITLE:** **SALE LANE CITY HEALTH SYSTEM**

**PROJECT NUMBER:** **000-0000**

**PROJECT LOCATION:** **SALE LANE CITY, ILLINOIS**

**PROJECT START DATE:** **06/01/2015**

**PROJECT END DATE:** **06/30/2015**

**PROJECT MANAGER:** **CHRISTOPHER J. BROWN**

**PROJECT SPONSOR:** **SALE LANE CITY HEALTH SYSTEM**

**PROJECT STATUS:** **IN PROGRESS**

**PROJECT PHASE:** **CONSTRUCTION MAINTENANCE**

**PROJECT SCOPE:** **ALL AREAS**

**PROJECT RISK LEVEL:** **LOW**

**PROJECT RISK CATEGORY:** **LOW**

**PROJECT RISK SCORE:** **10**

**PROJECT RISK RATING:** **10**

**PROJECT RISK DESCRIPTION:** **Low risk of infection control issues during construction maintenance.**

**INFECTION CONTROL RISK ASSESSMENT FOR CONSTRUCTION MAINTENANCE**

**Project Information:**  
 Project Name: **SALE LANE CITY HEALTH SYSTEM**  
 Project Number: **000-0000**  
 Project Location: **SALE LANE CITY, ILLINOIS**  
 Project Start Date: **06/01/2015**  
 Project End Date: **06/30/2015**  
 Project Manager: **CHRISTOPHER J. BROWN**  
 Project Sponsor: **SALE LANE CITY HEALTH SYSTEM**

**Assessment Information:**  
 Assessment Date: **06/01/2015**  
 Assessment Time: **09:00 AM**  
 Assessment Location: **SALE LANE CITY HEALTH SYSTEM**  
 Assessment Type: **CONSTRUCTION MAINTENANCE**  
 Assessment Scope: **ALL AREAS**

**Assessment Results:**  
 Overall Risk Level: **LOW**  
 Risk Category: **LOW**  
 Risk Score: **10**  
 Risk Rating: **10**  
 Risk Description: **Low risk of infection control issues during construction maintenance.**

**CONSTRUCTION SAFETY RISK ASSESSMENT CHECKLIST**

**Project Name:** **SALE LANE CITY HEALTH SYSTEM**

**Project Number:** **000-0000**

**Project Location:** **SALE LANE CITY, ILLINOIS**

**Project Start Date:** **06/01/2015**

**Project End Date:** **06/30/2015**

**Project Manager:** **CHRISTOPHER J. BROWN**

**Project Sponsor:** **SALE LANE CITY HEALTH SYSTEM**

**Project Status:** **IN PROGRESS**

**Project Phase:** **CONSTRUCTION MAINTENANCE**

**Project Scope:** **ALL AREAS**

**Project Risk Level:** **LOW**

**Project Risk Category:** **LOW**

**Project Risk Score:** **10**

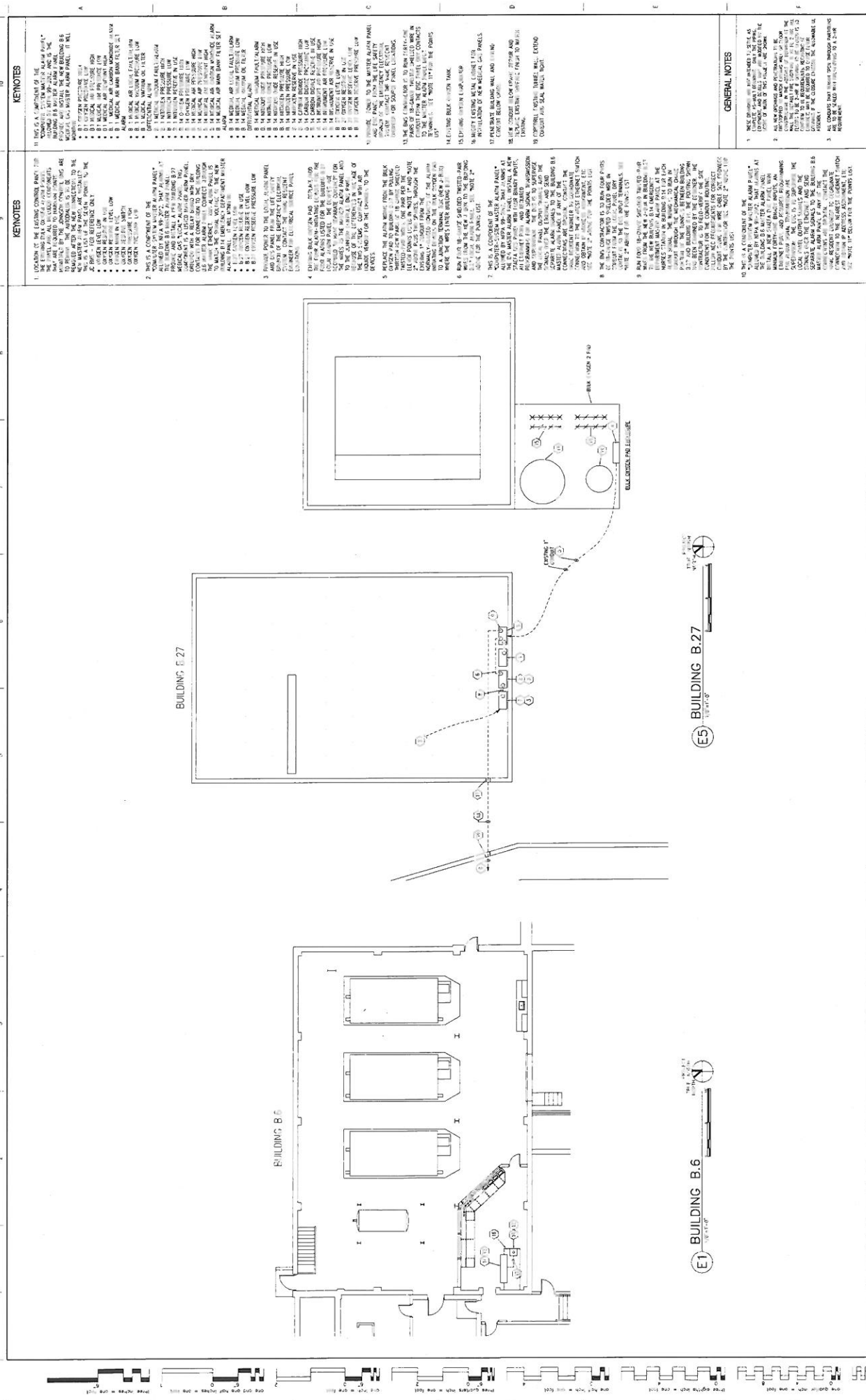
**Project Risk Rating:** **10**

**Project Risk Description:** **Low risk of infection control issues during construction maintenance.**







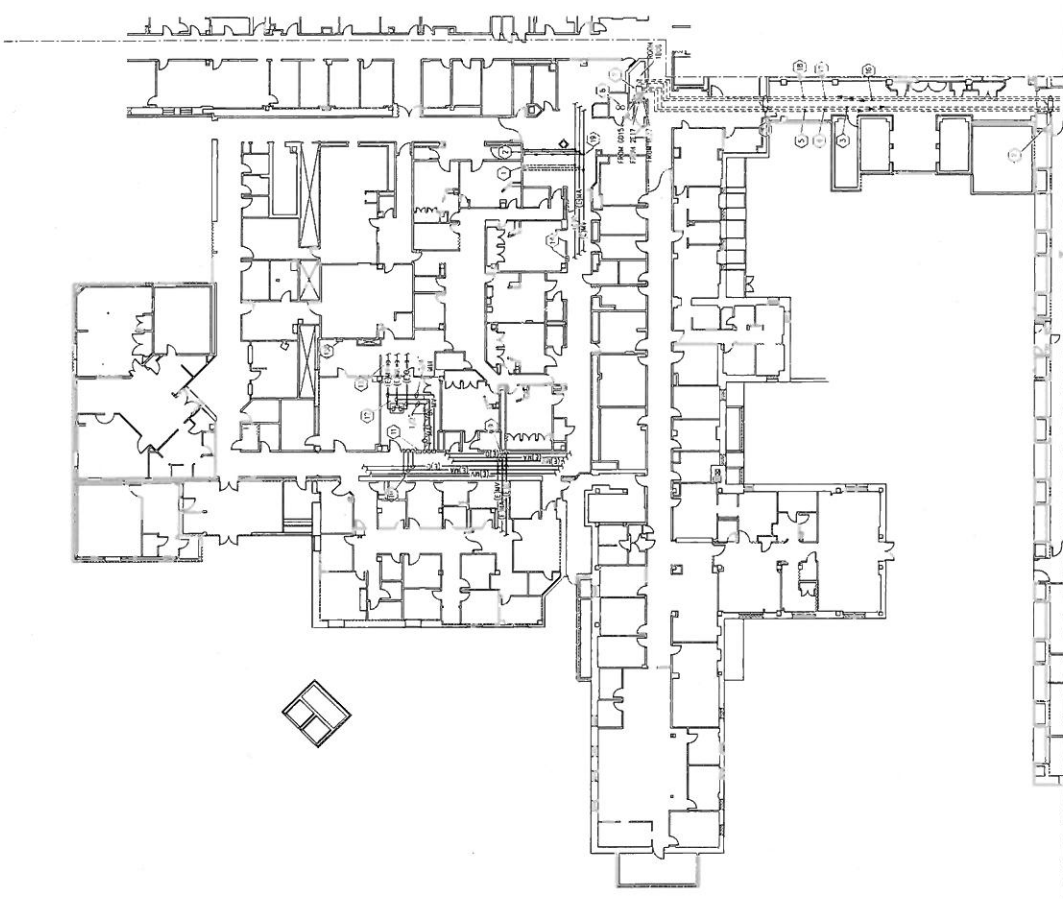


CONSULTANTS		ARCHITECT/ENGINEERS		PROJECT TITLE		PROJECT NUMBER		OFFICE OF CONSTRUCTION AND FACILITIES MANAGEMENT	
				ENLARGED AREA SITE PLAN		660-12-823		Department of Veterans Affairs	
						B1 B14 MED GAS REPAIRS		B1 B14	
						DRAWING NUMBER		MG100.1	
				APPROVED PROJECT DIRECTOR		LOCATION		SALT LAKE CITY, UTAH	
						DATE		JUNE 12, 2015	
						TOWN		DL	
						CHECKED		DPS	
						DL			
REVISIONS		DATE							





# F1 FIRST LEVEL - BUILDING 1



## KEYNOTES

1. EXISTING ZONE 1, 2, 3, 4, 5, 6, 7, 8, 9, 10, 11, 12, 13, 14, 15, 16, 17, 18, 19, 20, 21, 22, 23, 24, 25, 26, 27, 28, 29, 30, 31, 32, 33, 34, 35, 36, 37, 38, 39, 40, 41, 42, 43, 44, 45, 46, 47, 48, 49, 50, 51, 52, 53, 54, 55, 56, 57, 58, 59, 60, 61, 62, 63, 64, 65, 66, 67, 68, 69, 70, 71, 72, 73, 74, 75, 76, 77, 78, 79, 80, 81, 82, 83, 84, 85, 86, 87, 88, 89, 90, 91, 92, 93, 94, 95, 96, 97, 98, 99, 100, 101, 102, 103, 104, 105, 106, 107, 108, 109, 110, 111, 112, 113, 114, 115, 116, 117, 118, 119, 120, 121, 122, 123, 124, 125, 126, 127, 128, 129, 130, 131, 132, 133, 134, 135, 136, 137, 138, 139, 140, 141, 142, 143, 144, 145, 146, 147, 148, 149, 150, 151, 152, 153, 154, 155, 156, 157, 158, 159, 160, 161, 162, 163, 164, 165, 166, 167, 168, 169, 170, 171, 172, 173, 174, 175, 176, 177, 178, 179, 180, 181, 182, 183, 184, 185, 186, 187, 188, 189, 190, 191, 192, 193, 194, 195, 196, 197, 198, 199, 200, 201, 202, 203, 204, 205, 206, 207, 208, 209, 210, 211, 212, 213, 214, 215, 216, 217, 218, 219, 220, 221, 222, 223, 224, 225, 226, 227, 228, 229, 230, 231, 232, 233, 234, 235, 236, 237, 238, 239, 240, 241, 242, 243, 244, 245, 246, 247, 248, 249, 250, 251, 252, 253, 254, 255, 256, 257, 258, 259, 260, 261, 262, 263, 264, 265, 266, 267, 268, 269, 270, 271, 272, 273, 274, 275, 276, 277, 278, 279, 280, 281, 282, 283, 284, 285, 286, 287, 288, 289, 290, 291, 292, 293, 294, 295, 296, 297, 298, 299, 300, 301, 302, 303, 304, 305, 306, 307, 308, 309, 310, 311, 312, 313, 314, 315, 316, 317, 318, 319, 320, 321, 322, 323, 324, 325, 326, 327, 328, 329, 330, 331, 332, 333, 334, 335, 336, 337, 338, 339, 340, 341, 342, 343, 344, 345, 346, 347, 348, 349, 350, 351, 352, 353, 354, 355, 356, 357, 358, 359, 360, 361, 362, 363, 364, 365, 366, 367, 368, 369, 370, 371, 372, 373, 374, 375, 376, 377, 378, 379, 380, 381, 382, 383, 384, 385, 386, 387, 388, 389, 390, 391, 392, 393, 394, 395, 396, 397, 398, 399, 400, 401, 402, 403, 404, 405, 406, 407, 408, 409, 410, 411, 412, 413, 414, 415, 416, 417, 418, 419, 420, 421, 422, 423, 424, 425, 426, 427, 428, 429, 430, 431, 432, 433, 434, 435, 436, 437, 438, 439, 440, 441, 442, 443, 444, 445, 446, 447, 448, 449, 450, 451, 452, 453, 454, 455, 456, 457, 458, 459, 460, 461, 462, 463, 464, 465, 466, 467, 468, 469, 470, 471, 472, 473, 474, 475, 476, 477, 478, 479, 480, 481, 482, 483, 484, 485, 486, 487, 488, 489, 490, 491, 492, 493, 494, 495, 496, 497, 498, 499, 500, 501, 502, 503, 504, 505, 506, 507, 508, 509, 510, 511, 512, 513, 514, 515, 516, 517, 518, 519, 520, 521, 522, 523, 524, 525, 526, 527, 528, 529, 530, 531, 532, 533, 534, 535, 536, 537, 538, 539, 540, 541, 542, 543, 544, 545, 546, 547, 548, 549, 550, 551, 552, 553, 554, 555, 556, 557, 558, 559, 560, 561, 562, 563, 564, 565, 566, 567, 568, 569, 570, 571, 572, 573, 574, 575, 576, 577, 578, 579, 580, 581, 582, 583, 584, 585, 586, 587, 588, 589, 590, 591, 592, 593, 594, 595, 596, 597, 598, 599, 600, 601, 602, 603, 604, 605, 606, 607, 608, 609, 610, 611, 612, 613, 614, 615, 616, 617, 618, 619, 620, 621, 622, 623, 624, 625, 626, 627, 628, 629, 630, 631, 632, 633, 634, 635, 636, 637, 638, 639, 640, 641, 642, 643, 644, 645, 646, 647, 648, 649, 650, 651, 652, 653, 654, 655, 656, 657, 658, 659, 660, 661, 662, 663, 664, 665, 666, 667, 668, 669, 670, 671, 672, 673, 674, 675, 676, 677, 678, 679, 680, 681, 682, 683, 684, 685, 686, 687, 688, 689, 690, 691, 692, 693, 694, 695, 696, 697, 698, 699, 700, 701, 702, 703, 704, 705, 706, 707, 708, 709, 710, 711, 712, 713, 714, 715, 716, 717, 718, 719, 720, 721, 722, 723, 724, 725, 726, 727, 728, 729, 730, 731, 732, 733, 734, 735, 736, 737, 738, 739, 740, 741, 742, 743, 744, 745, 746, 747, 748, 749, 750, 751, 752, 753, 754, 755, 756, 757, 758, 759, 760, 761, 762, 763, 764, 765, 766, 767, 768, 769, 770, 771, 772, 773, 774, 775, 776, 777, 778, 779, 780, 781, 782, 783, 784, 785, 786, 787, 788, 789, 790, 791, 792, 793, 794, 795, 796, 797, 798, 799, 800, 801, 802, 803, 804, 805, 806, 807, 808, 809, 810, 811, 812, 813, 814, 815, 816, 817, 818, 819, 820, 821, 822, 823, 824, 825, 826, 827, 828, 829, 830, 831, 832, 833, 834, 835, 836, 837, 838, 839, 840, 841, 842, 843, 844, 845, 846, 847, 848, 849, 850, 851, 852, 853, 854, 855, 856, 857, 858, 859, 860, 861, 862, 863, 864, 865, 866, 867, 868, 869, 870, 871, 872, 873, 874, 875, 876, 877, 878, 879, 880, 881, 882, 883, 884, 885, 886, 887, 888, 889, 890, 891, 892, 893, 894, 895, 896, 897, 898, 899, 900, 901, 902, 903, 904, 905, 906, 907, 908, 909, 910, 911, 912, 913, 914, 915, 916, 917, 918, 919, 920, 921, 922, 923, 924, 925, 926, 927, 928, 929, 930, 931, 932, 933, 934, 935, 936, 937, 938, 939, 940, 941, 942, 943, 944, 945, 946, 947, 948, 949, 950, 951, 952, 953, 954, 955, 956, 957, 958, 959, 960, 961, 962, 963, 964, 965, 966, 967, 968, 969, 970, 971, 972, 973, 974, 975, 976, 977, 978, 979, 980, 981, 982, 983, 984, 985, 986, 987, 988, 989, 990, 991, 992, 993, 994, 995, 996, 997, 998, 999, 1000.

## GENERAL NOTES

1. THIS DRAWING IS PART OF A SET OF DRAWINGS FOR THE CONSTRUCTION OF THE FIRST LEVEL OF BUILDING 1. IT IS TO BE USED IN CONJUNCTION WITH THE OTHER DRAWINGS IN THE SET.
2. ALL WORK SHALL BE DONE IN ACCORDANCE WITH THE LATEST EDITIONS OF THE UTAH BUILDING CODE AND THE UTAH PLUMBING CODE.
3. ALL WORK SHALL BE DONE IN ACCORDANCE WITH THE LATEST EDITIONS OF THE UTAH BUILDING CODE AND THE UTAH PLUMBING CODE.

<b>CONSULTANTS</b> [Blank space for consultant information]		<b>ARCHITECT/ENGINEERS</b> VAN PETERSON & FRANK ASSOCIATES INC. 1000 WEST 1000 SOUTH, SUITE 100 SALT LAKE CITY, UTAH 84119 (801) 521-1000 www.vanpeter.com		<b>PROJECT TITLE</b> BL BM MED GAS REPAIRS		<b>PROJECT NUMBER</b> 660-2-825	
<b>DATE</b> JUNE 12, 2015		<b>LOCATION</b> SALT LAKE CITY, UTAH		<b>BUILDING NUMBER</b> BL BM		<b>DRAWING NUMBER</b> MG1002.02	
<b>CREATED</b> DPB		<b>CHANGED</b> CHD		<b>DATE</b> JUNE 8, 2015		<b>BY</b> CHD	
<b>APPROVED PROJECT DIRECTOR</b> [Signature]		<b>OFFICE OF CONSTRUCTION AND FACILITIES MANAGEMENT</b> [Signature]		<b>UTAH DEPARTMENT OF HEALTH</b> [Signature]		<b>UTAH DEPARTMENT OF HEALTH</b> [Signature]	





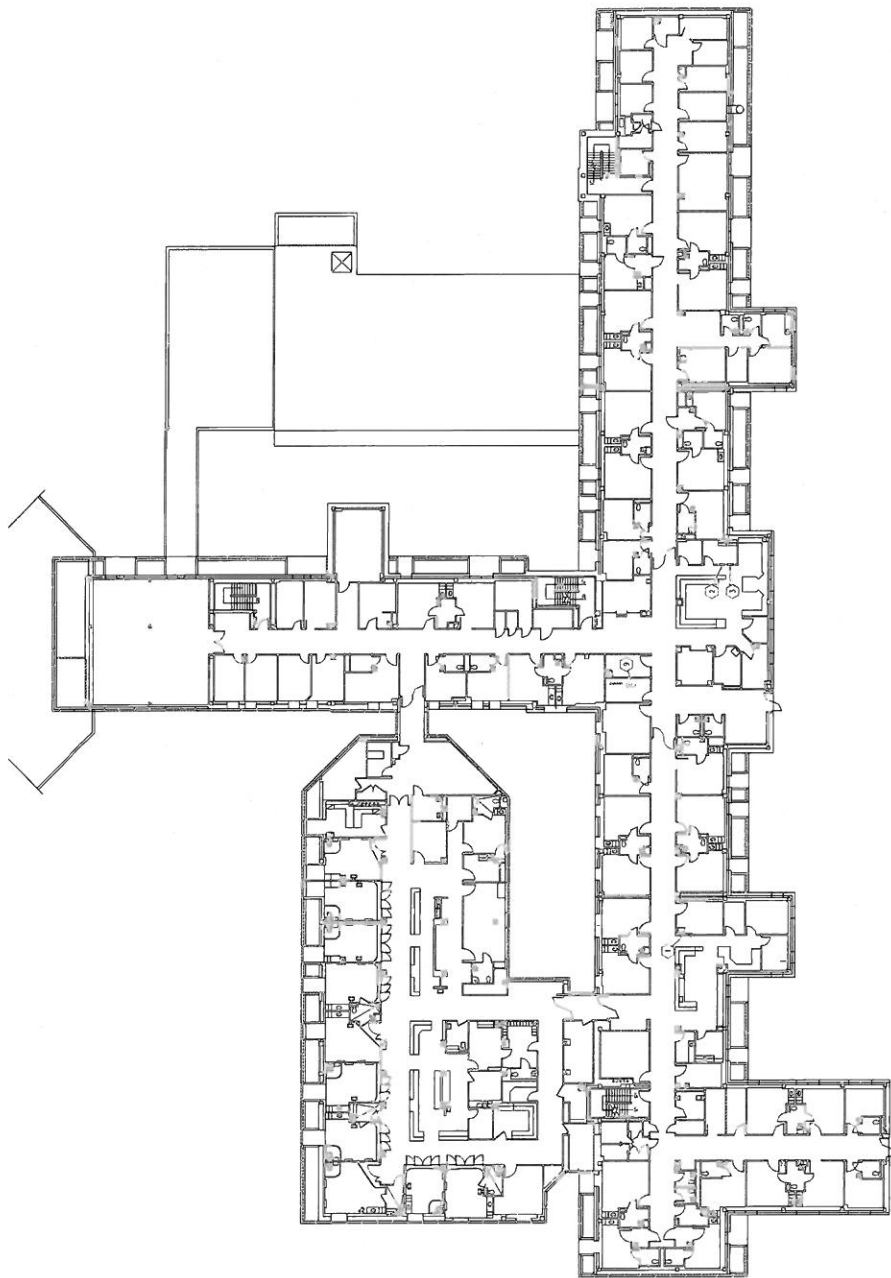


# KEYNOTES

1. EXISTING MEDICAL GAS PIPING SHALL BE REMOVED AND REINSTALLED TO THE "AS SHOWN" LOCATION. MEDICAL GAS PIPING SHALL BE INSTALLED TO THE "AS SHOWN" LOCATION.
2. EXISTING MEDICAL GAS PIPING SHALL BE REMOVED AND REINSTALLED TO THE "AS SHOWN" LOCATION. MEDICAL GAS PIPING SHALL BE INSTALLED TO THE "AS SHOWN" LOCATION.
3. EXISTING MEDICAL GAS PIPING SHALL BE REMOVED AND REINSTALLED TO THE "AS SHOWN" LOCATION. MEDICAL GAS PIPING SHALL BE INSTALLED TO THE "AS SHOWN" LOCATION.
4. EXISTING MEDICAL GAS PIPING SHALL BE REMOVED AND REINSTALLED TO THE "AS SHOWN" LOCATION. MEDICAL GAS PIPING SHALL BE INSTALLED TO THE "AS SHOWN" LOCATION.
5. EXISTING MEDICAL GAS PIPING SHALL BE REMOVED AND REINSTALLED TO THE "AS SHOWN" LOCATION. MEDICAL GAS PIPING SHALL BE INSTALLED TO THE "AS SHOWN" LOCATION.
6. EXISTING MEDICAL GAS PIPING SHALL BE REMOVED AND REINSTALLED TO THE "AS SHOWN" LOCATION. MEDICAL GAS PIPING SHALL BE INSTALLED TO THE "AS SHOWN" LOCATION.
7. EXISTING MEDICAL GAS PIPING SHALL BE REMOVED AND REINSTALLED TO THE "AS SHOWN" LOCATION. MEDICAL GAS PIPING SHALL BE INSTALLED TO THE "AS SHOWN" LOCATION.
8. EXISTING MEDICAL GAS PIPING SHALL BE REMOVED AND REINSTALLED TO THE "AS SHOWN" LOCATION. MEDICAL GAS PIPING SHALL BE INSTALLED TO THE "AS SHOWN" LOCATION.
9. EXISTING MEDICAL GAS PIPING SHALL BE REMOVED AND REINSTALLED TO THE "AS SHOWN" LOCATION. MEDICAL GAS PIPING SHALL BE INSTALLED TO THE "AS SHOWN" LOCATION.
10. EXISTING MEDICAL GAS PIPING SHALL BE REMOVED AND REINSTALLED TO THE "AS SHOWN" LOCATION. MEDICAL GAS PIPING SHALL BE INSTALLED TO THE "AS SHOWN" LOCATION.

## GENERAL NOTES

1. THESE DRAWINGS ARE NOT TO BE USED FOR ANY OTHER PROJECTS WITHOUT THE WRITTEN CONSENT OF THE ARCHITECT. ANY REVISIONS TO THESE DRAWINGS SHALL BE MADE TO THE ORIGINAL DRAWINGS AND NOT TO THESE DRAWINGS.
2. THE ARCHITECT SHALL BE RESPONSIBLE FOR THE DESIGN OF THE PROJECT. THE ARCHITECT SHALL BE RESPONSIBLE FOR THE DESIGN OF THE PROJECT.
3. ALL CONDUITS SHALL BE INSTALLED TO THE "AS SHOWN" LOCATION. MEDICAL GAS PIPING SHALL BE INSTALLED TO THE "AS SHOWN" LOCATION.



THIRD LEVEL  
F1

THIRD LEVEL  
F1

CONSULTANTS		ARCHITECT/ENGINEERS		DRAWING TITLE		PROJECT NUMBER		OFFICE OF CONSTRUCTION AND FACILITIES MANAGEMENT			
DATE		 RYAN D. SCHUM PE, License No. 12345 State of Utah Salt Lake City, Utah 2010-2011		MEDICAL GAS BUILDING #1 THIRD LEVEL APPROVED PROJECT DIRECTOR		B1 B4 MED GAS REPAIRS B1 B4 B1 B4		PROJECT NUMBER B1 B4 B1 B4		OFFICE OF CONSTRUCTION AND FACILITIES MANAGEMENT MGT04 MGT04	
DATE		SALT LAKE CITY, UTAH DATE JUNE 12, 2015		LOCATION SALT LAKE CITY, UTAH		CHECKED DPB		DRAWN CPO		PROJECT NUMBER B1 B4 B1 B4	