

BEAM & GIRDER SCHEDULE

MARK	SIZE	REIN. PER BEAM	DIAGRAM
		NO. SIZE LENGTH	
		MARK	REMARKS
B1	12x18	2 2# 10'0"	TOP
		2 2# 10'0"	TOP
B2	12x18	2 2# 10'0"	TOP
		2 2# 10'0"	TOP
B3	12x18	2 2# 10'0"	TOP
		2 2# 10'0"	TOP
G1	12x18	2 2# 10'0"	TOP
		2 2# 10'0"	TOP
J1	5x16	1 1# 10'0"	TOP
J2	5x16	1 1# 10'0"	TOP

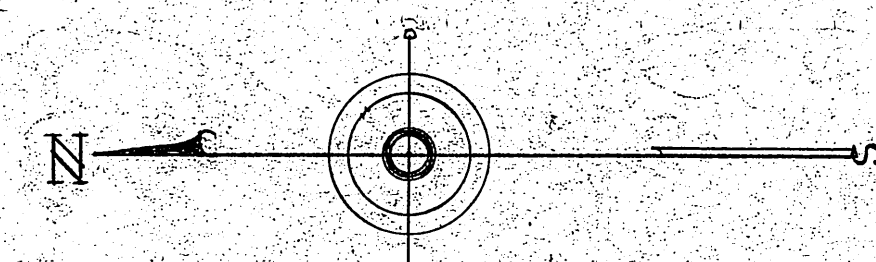
SLAB SCHEDULE

MARK	THICK	MAIN STEEL	TEMPERATURE
		SOUTH OR WEST	NORTH OR EAST
S1	4"	1/2" @ 10" OC	1/2" @ 10" OC
S2	4"	1/2" @ 10" OC	1/2" @ 10" OC
S3	5"	1/2" @ 10" OC	1/2" @ 10" OC

GENERAL NOTES

DESIGN LIVE LOADS
 FLOOR, CL. 40' - PARTITION 50' 30#/D
 CONCRETE COVER OVER REIN. STEEL 100#/D
 SOLID SLABS 3/4"
 RIBBED SLABS 3/4"
 BEAMS & GIRDERS 1 1/2"
 WALLS 8"
 (FACE EXPOSED TO WEATHER)
 INTERIOR FACE 1"
 FOOTING (SIDES) 2"
 BOTTOM 4"
 CONCRETE DESIGN STRESSES
 F_c = 3,000#/D
 F_s = 20,000#/D
 F_s = 10
 F_s = 1350#/D
 UNLESS OTHERWISE SHOWN, WHERE 3,000#/D CONCRETE IS USED,
 ALL REIN. STEEL TO BE SPLICED 34 DIA.
 ALL REINFORCING STEEL TO BE DEFORMED INTERMEDIATE GRADE.
 ALL FOOTINGS DESIGNED FOR 4000#/D SOIL PRESSURE.
 SEE ARCHITECTURAL, MECHANICAL & ELECTRICAL DRAWINGS FOR
 RADIATOR RECESSES, PIPE SLEEVES, CONDUIT & SMALL OPENINGS
 IN FLOOR, SLABS, WALLS & ROOF SLABS.
 SEE NOTE SHT. 5515

SCALE 1/8"=1'-0"
 SCALE 1/2"=1'-0"



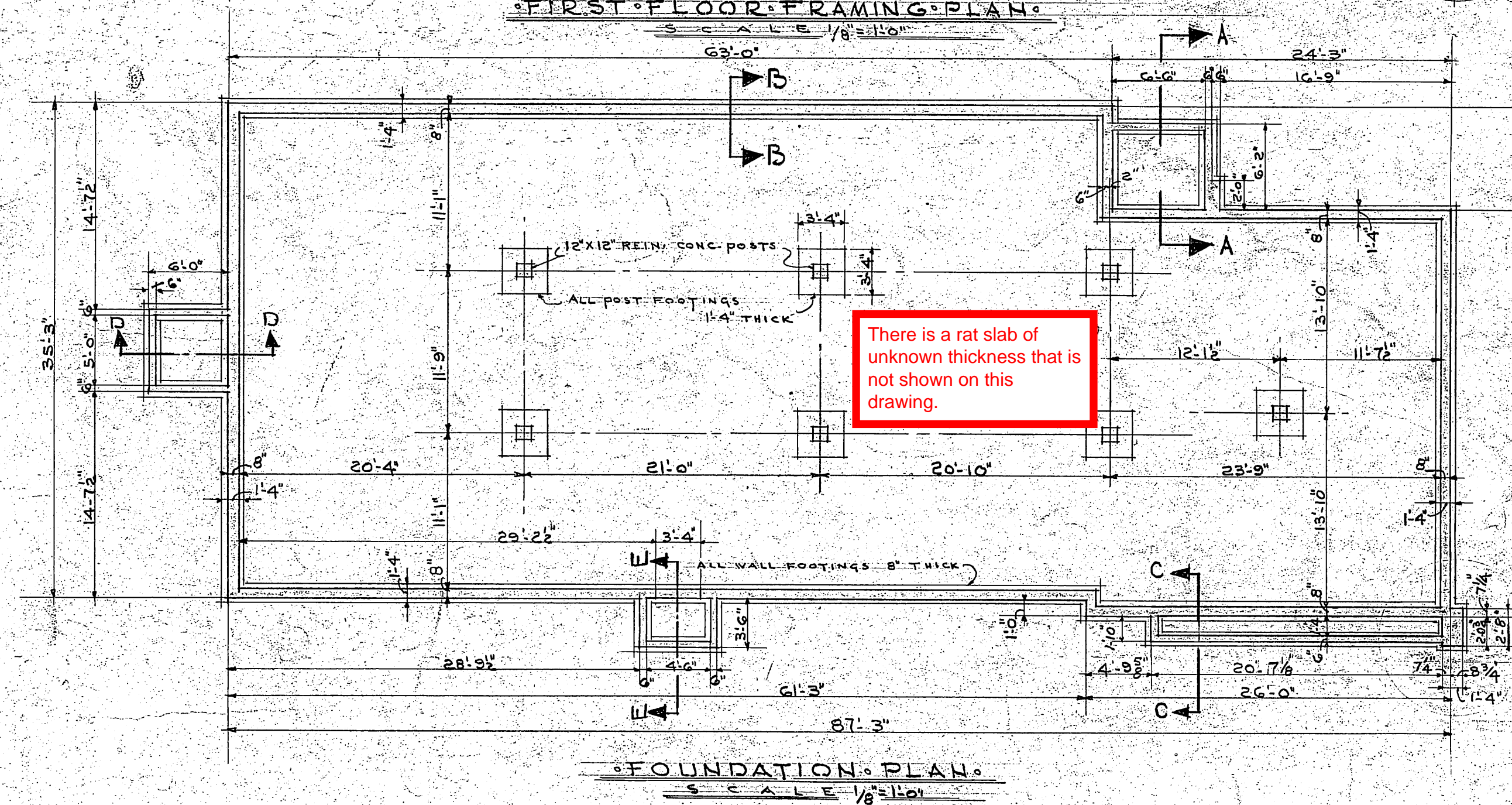
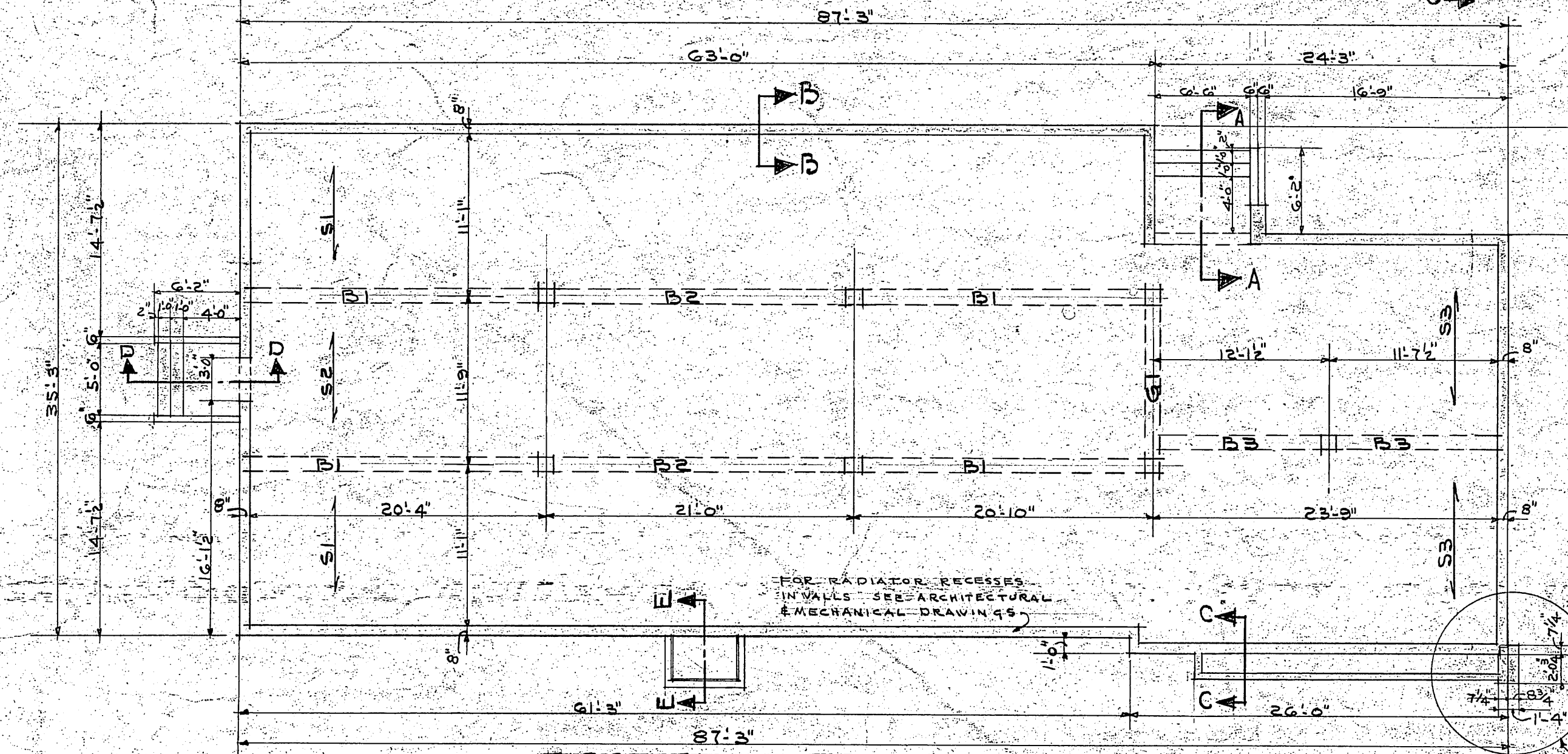
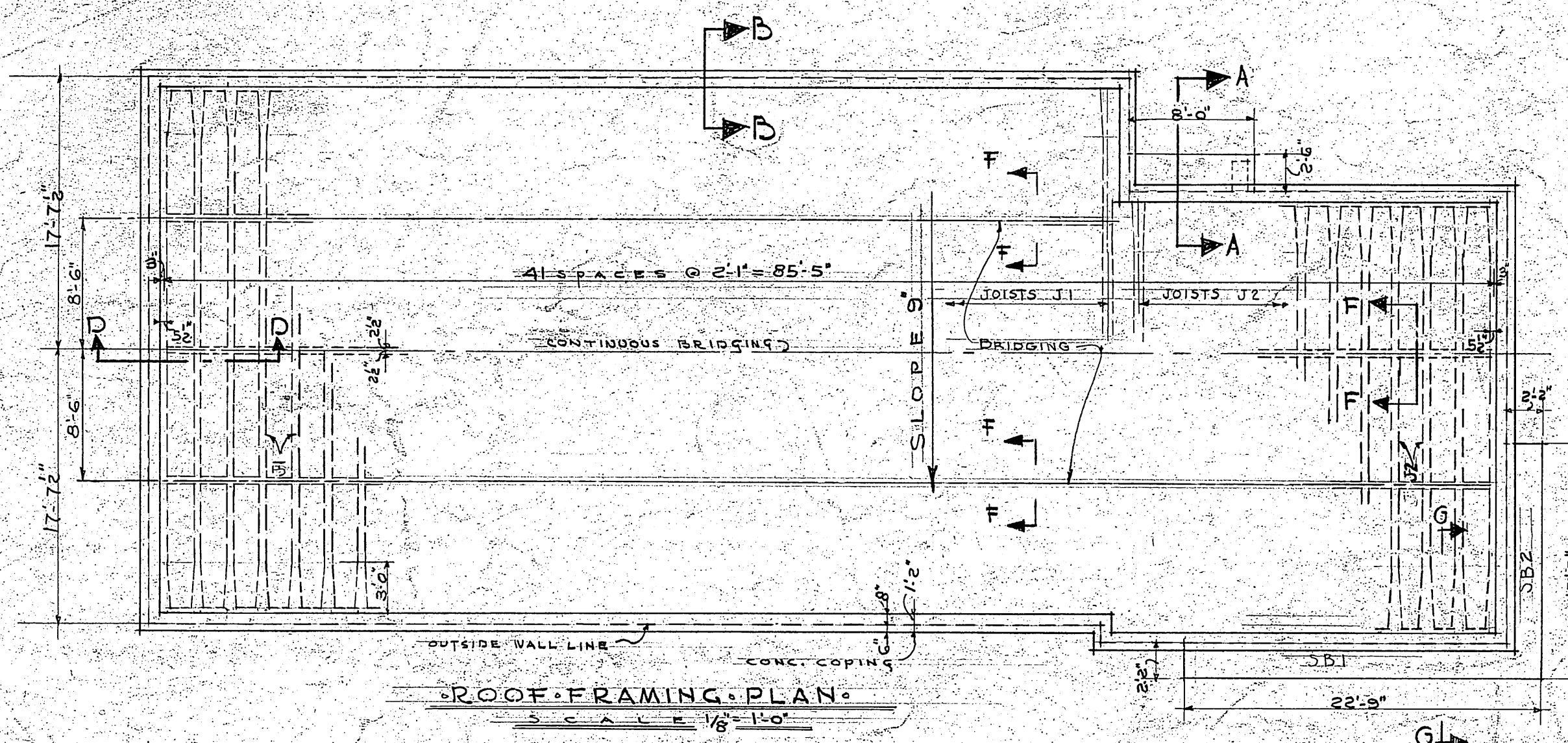
REVISION	DATE	DESCRIPTION	BY
1		REINFORCING IN STAIRS SECT. A-C REVISER TO AGREE WITH SECT. B-B	
2		JOHN GRAHAM ARCHITECT & ENGINEER	WAR DEPARTMENT
3		GEORGE M. RASQUE & SON - ASSOCIATE ARCHITECT	CORPS OF ENGINEERS
4		SPokane, Wash.	SEATTLE DISTRICT
DRAWN BY: E. E. W.			
CHECKED BY: R. R. W.			
APPROVED: [Signature] COL. C. E. DISTRICT ENGINEER			
DATE: 16 Jan 1948			
V. A. PROJECT NO. 2910			
DRAWING NUMBER: 25-12-520			
SHEET 520 OF 20			

RETURN TRACINGS TO PLAN FILES

CONTRACT DRAWING - AS BUILT

CONTRACT DRAWING - AS BUILT

3



There is a rat slab of unknown thickness that is not shown on this drawing.

