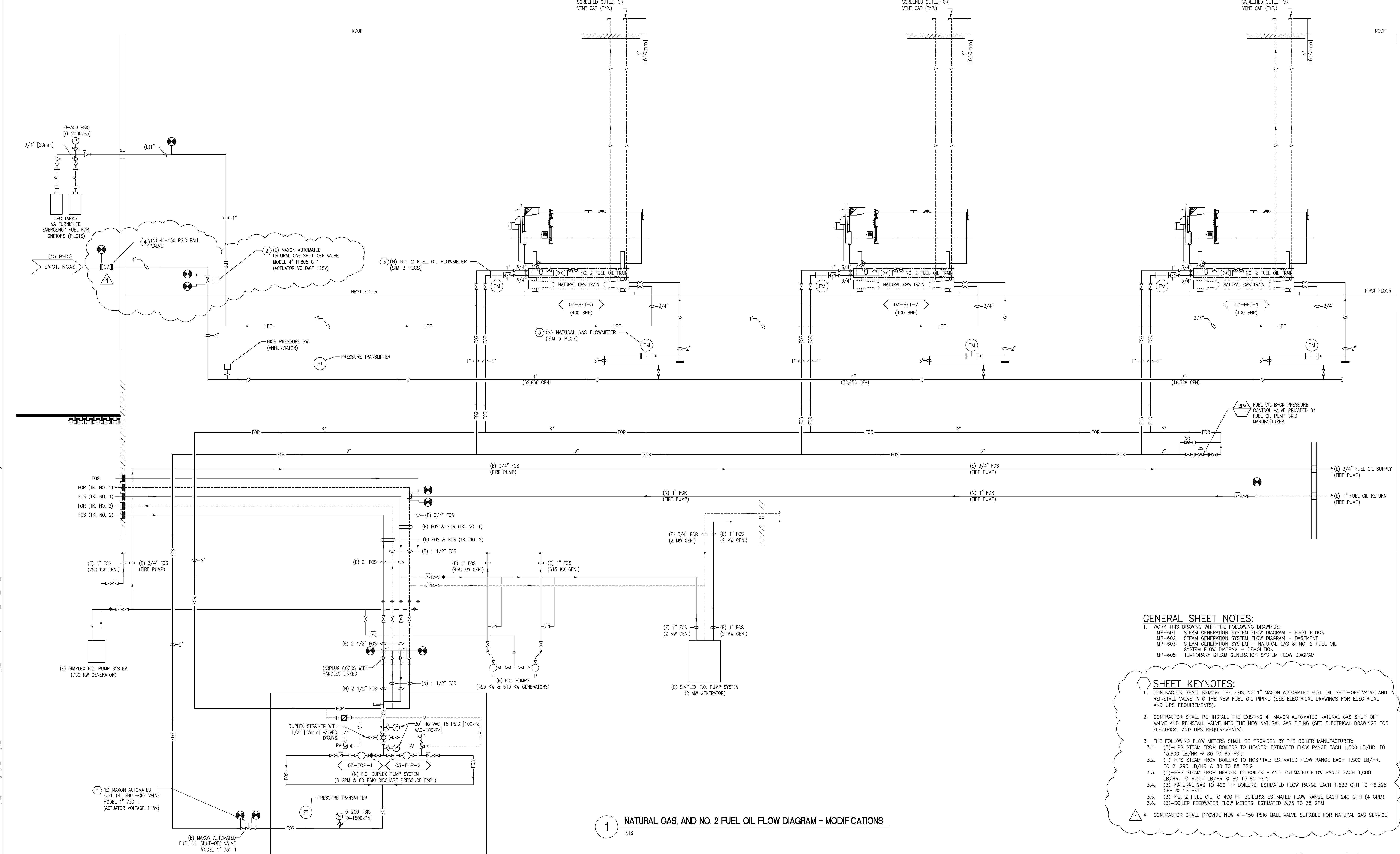


three inches = one foot
one and one half inches = one foot
one inch = one foot
three quarters inch = one foot
one half inch = one foot
three eighths inch = one foot
one quarter inch = one foot
one eighth inch = one foot

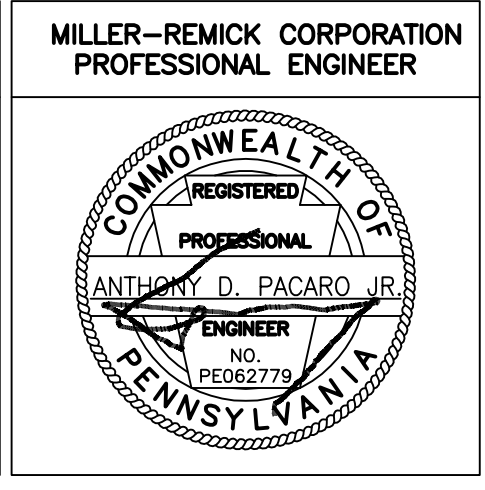


- GENERAL SHEET NOTES:**
- WORK THIS DRAWING WITH THE FOLLOWING DRAWINGS:
MP-601 STEAM GENERATION SYSTEM FLOW DIAGRAM - FIRST FLOOR
MP-602 STEAM GENERATION SYSTEM FLOW DIAGRAM - BASEMENT
MP-603 STEAM GENERATION SYSTEM - NATURAL GAS & NO. 2 FUEL OIL
MP-605 TEMPORARY STEAM GENERATION SYSTEM FLOW DIAGRAM
- SHEET KEYNOTES:**
- CONTRACTOR SHALL REMOVE THE EXISTING 1" MAXON AUTOMATED FUEL OIL SHUT-OFF VALVE AND REINSTALL VALVE INTO THE NEW FUEL OIL PIPING (SEE ELECTRICAL DRAWINGS FOR ELECTRICAL AND UPS REQUIREMENTS).
 - CONTRACTOR SHALL RE-INSTALL THE EXISTING 4" MAXON AUTOMATED NATURAL GAS SHUT-OFF VALVE AND REINSTALL VALVE INTO THE NEW NATURAL GAS PIPING (SEE ELECTRICAL DRAWINGS FOR ELECTRICAL AND UPS REQUIREMENTS).
 - THE FOLLOWING FLOW METERS SHALL BE PROVIDED BY THE BOILER MANUFACTURER:
3.1. (3)-HPS STEAM FROM BOILERS TO HEADER: ESTIMATED FLOW RANGE EACH 1,500 LB/HR. TO 13,800 LB/HR @ 80 TO 85 PSIG
3.2. (1)-HPS STEAM FROM BOILERS TO HOSPITAL: ESTIMATED FLOW RANGE EACH 1,500 LB/HR. TO 21,290 LB/HR @ 80 TO 85 PSIG
3.3. (1)-HPS STEAM FROM HEADER TO BOILER PLANT: ESTIMATED FLOW RANGE EACH 1,000 LB/HR. TO 6,300 LB/HR @ 80 TO 85 PSIG
3.4. (3)-NATURAL GAS TO 400 HP BOILERS: ESTIMATED FLOW RANGE EACH 1,633 CFH TO 16,328 CFH @ 15 PSIG
3.5. (3)-NO. 2 FUEL OIL TO 400 HP BOILERS: ESTIMATED FLOW RANGE EACH 240 GPH (4 GPM).
3.6. (3)-BOILER FEEDWATER FLOW METERS: ESTIMATED 3.75 TO 35 GPM
 - CONTRACTOR SHALL PROVIDE NEW 4"-150 PSIG BALL VALVE SUITABLE FOR NATURAL GAS SERVICE.

1 NATURAL GAS, AND NO. 2 FUEL OIL FLOW DIAGRAM - MODIFICATIONS
NTS

NO.	DESCRIPTION	DATE
1	ADDENDUM #1 ADDED 4" BALL VALVE & 4" GAS PIPING	1-29-16

CONSULTANTS:



ARCHITECT/ENGINEERS:

Miller-Remick LLC
M.E.P. & Structural Engineering
A Service Disabled Veteran Owned Small Business
1010 KINGS HIGHWAY SOUTH
CHERRY HILL, NEW JERSEY 08034
PHONE: (856)429-4000
FAX: (856)429-5002

Drawing Title
**MECHANICAL (STEAM GENERATION)
NATURAL GAS AND NO. 2 FUEL OIL
FLOW DIAGRAM - MODIFICATIONS**

Approved: Project Director

Project Title ALTOONA BOILER REPLACEMENT		
Project Number 503-13-120		
Building Number BLDG. 03		
Drawing Number MP-604 Dwg. 37 of 63		
Location VA MEDICAL CENTER ALTOONA, PA	Date 06-03-2014	Checked MPS Drawn JUM

Office of Construction and Facilities Management
Department of Veterans Affairs