

FINAL SUBMITTAL

OFFICE OF
CONSTRUCTION
AND FACILITIES
MANAGEMENT

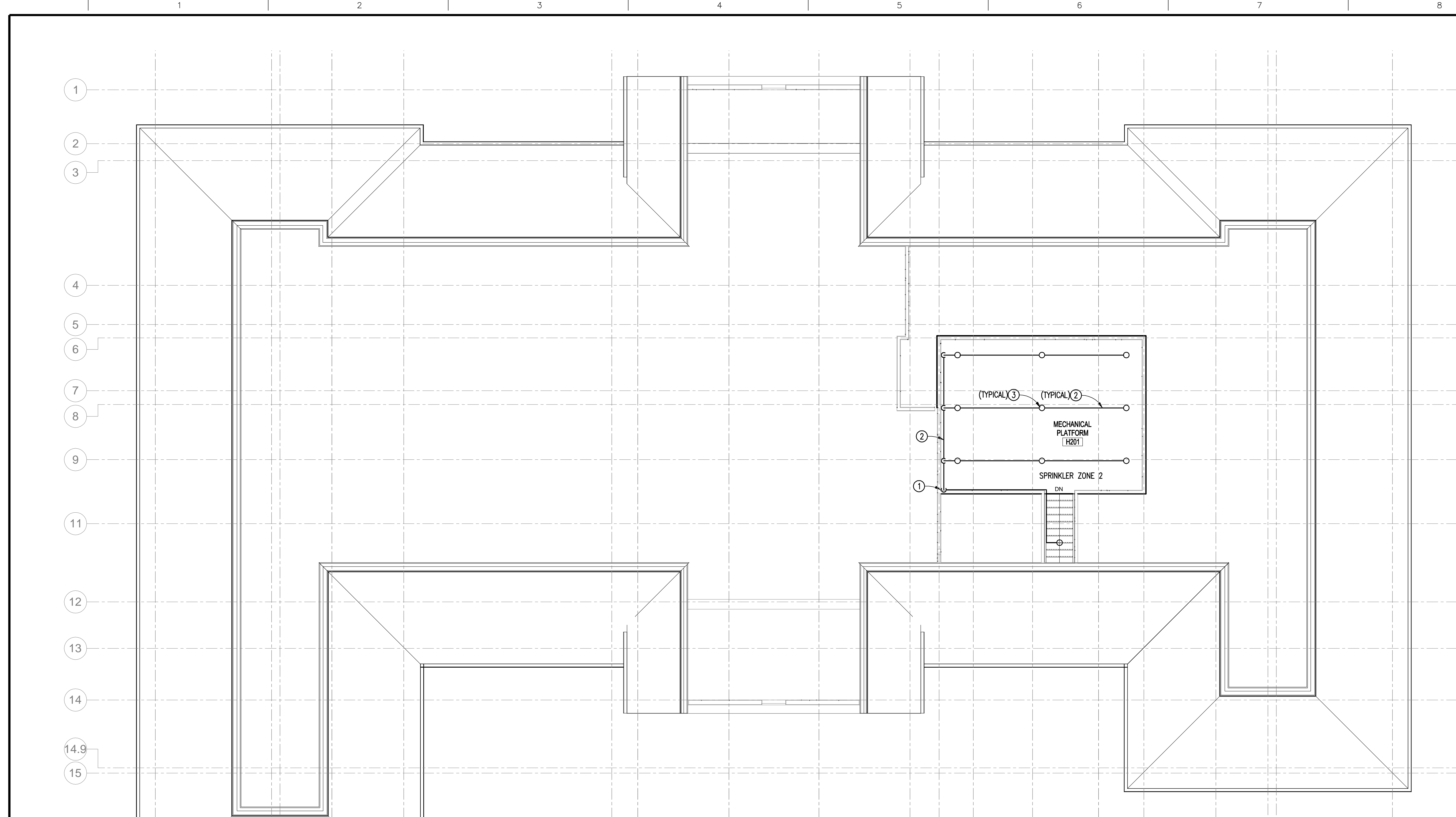


SCALE: $3/16" = 1'-0"$

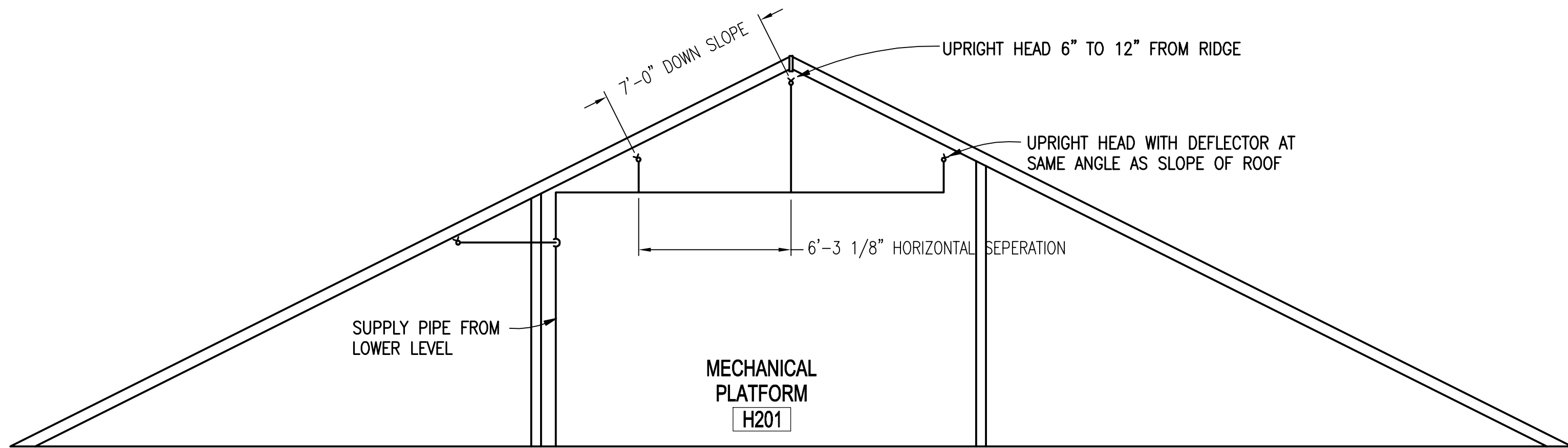
--	--	--	--	--	--	--	--	--	--	--	--	--	--	--	--	--	--	--	--	--	--	--	--	--	--	--	--	--	--	--	--	--	--	--	--	--	--	--	--	--	--	--	--	--	--	--	--	--	--	--	--	--	--	--	--	--	--	--	--	--	--	--	--	--	--	--	--	--	--	--	--	--	--	--	--	--	--	--	--	--	--	--	--	--	--	--	--	--	--	--	--	--	--	--	--	--	--	--	--	--	--	--	--	--	--	--	--	--	--	--	--	--	--	--	--	--	--	--	--	--	--	--	--	--	--	--	--	--	--	--	--	--	--	--	--	--	--	--	--	--	--	--	--	--	--	--	--	--	--	--	--	--	--	--	--	--	--	--	--	--	--	--	--	--	--	--	--	--	--	--	--	--	--	--	--	--	--	--	--	--	--	--	--	--	--	--	--	--	--	--	--	--	--	--	--	--	--	--	--	--	--	--	--	--	--	--	--	--	--	--	--	--	--	--	--	--	--	--	--	--	--	--	--	--	--	--	--	--	--	--	--	--	--	--	--	--	--	--	--	--	--	--	--	--	--	--	--	--	--	--	--	--	--	--	--	--	--	--	--	--	--	--	--	--	--	--	--	--	--	--	--	--	--	--	--	--	--	--	--	--	--	--	--	--	--	--	--	--	--	--	--	--	--	--	--	--	--	--	--	--	--	--	--	--	--	--	--	--	--	--	--	--	--	--	--	--	--	--	--	--	--	--	--	--	--	--	--	--	--	--	--	--	--	--	--	--	--	--	--	--	--	--	--	--	--	--	--	--	--	--	--	--	--	--	--	--	--	--	--	--	--	--	--	--	--	--	--	--	--	--	--	--	--	--	--	--	--	--	--	--	--	--	--	--	--	--	--	--	--	--	--	--	--	--	--	--	--	--	--	--	--	--	--	--	--	--	--	--	--	--	--	--	--	--	--	--	--	--	--	--	--	--	--	--	--	--	--	--	--	--	--	--	--	--	--	--	--	--	--	--	--	--	--	--	--	--	--	--	--	--	--	--	--	--	--	--	--	--	--	--	--	--	--	--	--	--	--	--	--	--	--	--	--	--	--	--	--	--	--	--	--	--	--	--	--	--	--	--	--	--	--	--	--	--	--	--	--	--	--	--	--	--	--	--	--	--	--	--	--	--	--	--	--	--	--	--	--	--	--	--	--	--	--	--	--	--	--	--	--	--	--	--	--	--	--	--	--	--	--	--	--	--	--	--	--	--	--	--	--	--	--	--	--	--	--	--	--	--	--	--	--	--	--	--	--	--	--	--	--	--	--	--	--	--	--	--	--	--	--	--	--	--	--	--	--	--	--	--	--	--	--	--	--	--	--	--	--	--	--	--	--

three eighths inch = one foot
one eighth inch = one foot
one quarter inch = one foot
one half inch = one foot
three quarters inch = one foot
one inch = one foot
one and one half inches = one foot
three inches = one foot

A
B
C
D
E
F
G



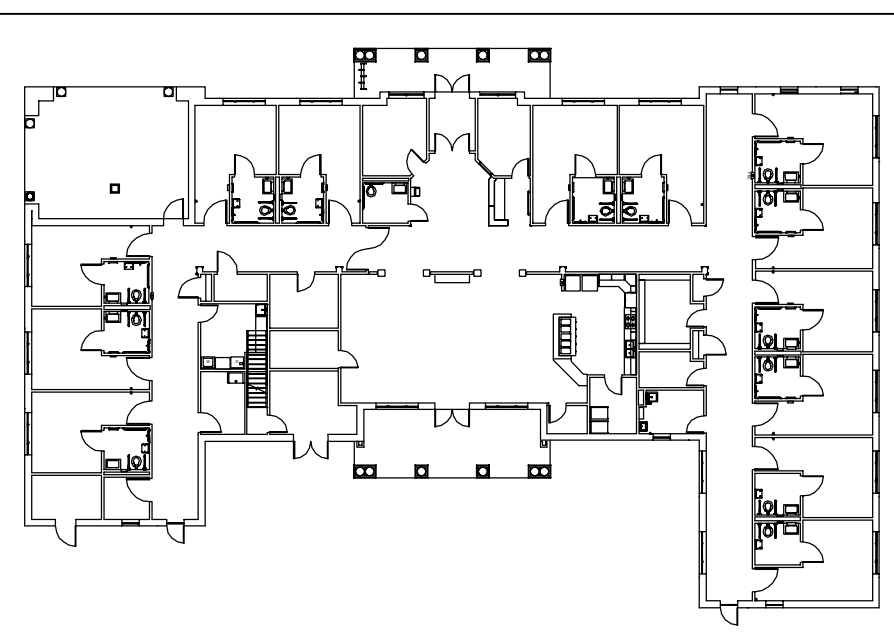
13 BED HOME ATTIC
FLOOR PLAN
SCALE: 3/16" = 1'-0"



13 BED HOME MECHANICAL PLATFORM
ATTIC ELEVATION
SCALE: NONE

KEYED NOTES:
(THIS DRAWING ONLY)

- ① ROUTE SUPPLY FROM LOWER LEVEL AT THIS APPROXIMATE LOCATION. FOR PIPING CONTINUATION REFER TO DRAWING FX101.
- ② ROUTE SPRINKLER PIPING AS INDICATED. ALL PIPING SHALL BE SUPPORTED FROM BUILDING STRUCTURE IN ACCORDANCE WITH NFPA 13. REFER TO DETAILS ON SHEET F501.
- ③ INSTALL UPRIGHT SPRINKLER HEADS THROUGHOUT THE MEZZANINE IN ACCORDANCE WITH NFPA 13. THE DEFLECTOR OF ALL UPRIGHT HEADS SHALL BE SET AT THE SAME ANGLE AS ROOF. REFER TO DETAILS ON SHEET F501.



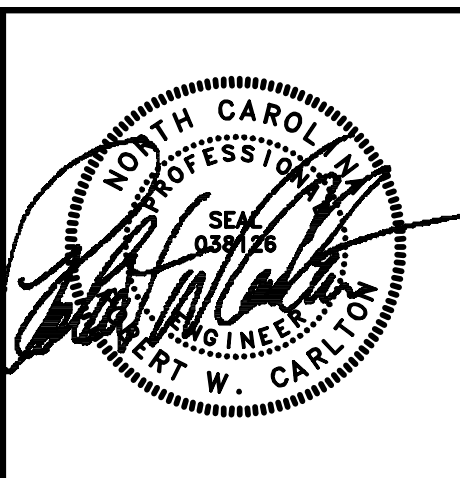
PLAN ORIENTATION TO BE CONSTRUCTED IN THIS PROJECT

NOTE: ARCHITECTURAL, STRUCTURAL, MECHANICAL, ELECTRICAL, PLUMBING AND FIRE PROTECTION FLOOR PLAN DRAWINGS OF THE BUILDING ENVELOPE AND INTERIOR FOR THE 13 BED HOME ARE DRAWN OPPOSITE HAND (MIRROR IMAGE) OF THE REQUIRED ORIENTATION. REFERENCE THIS KEY PLAN AND/OR CIVIL AND LANDSCAPE DRAWINGS FOR THE PROPER BUILDING ORIENTATION AND ASSOCIATED WALKS, DRIVES, PARKING AND SITE UTILITIES.

BUILDING ORIENTATION KEY PLAN

Revisions:	Date:

CONSULTANTS:
CLARKNEXSEN
440 Martin Luther King Jr. Blvd Macon, GA 31201 478.743.8415 Fax: 478.743.8239 www.clarknexsen.com Clark Nexsen License # C-1028



ARCHITECT/ENGINEERS:
TOLAND MIZELL MOLNAR
590 MEANS ST NW ATLANTA GA 30318

Drawing Title: 13 BED HOME ATTIC FLOOR PLAN
Approved: Project Director

Project Title: REPLACEMENT OF COMMUNITY LIVING CENTER POD PHASE II
Location: FAYETTEVILLE, NC
Date: OCTOBER 15, 2015
Checked: RWC
Drawn: GTK
Project Number: 565-133
Building Number:
Drawing Number: FX102
Dw: 96 of 143

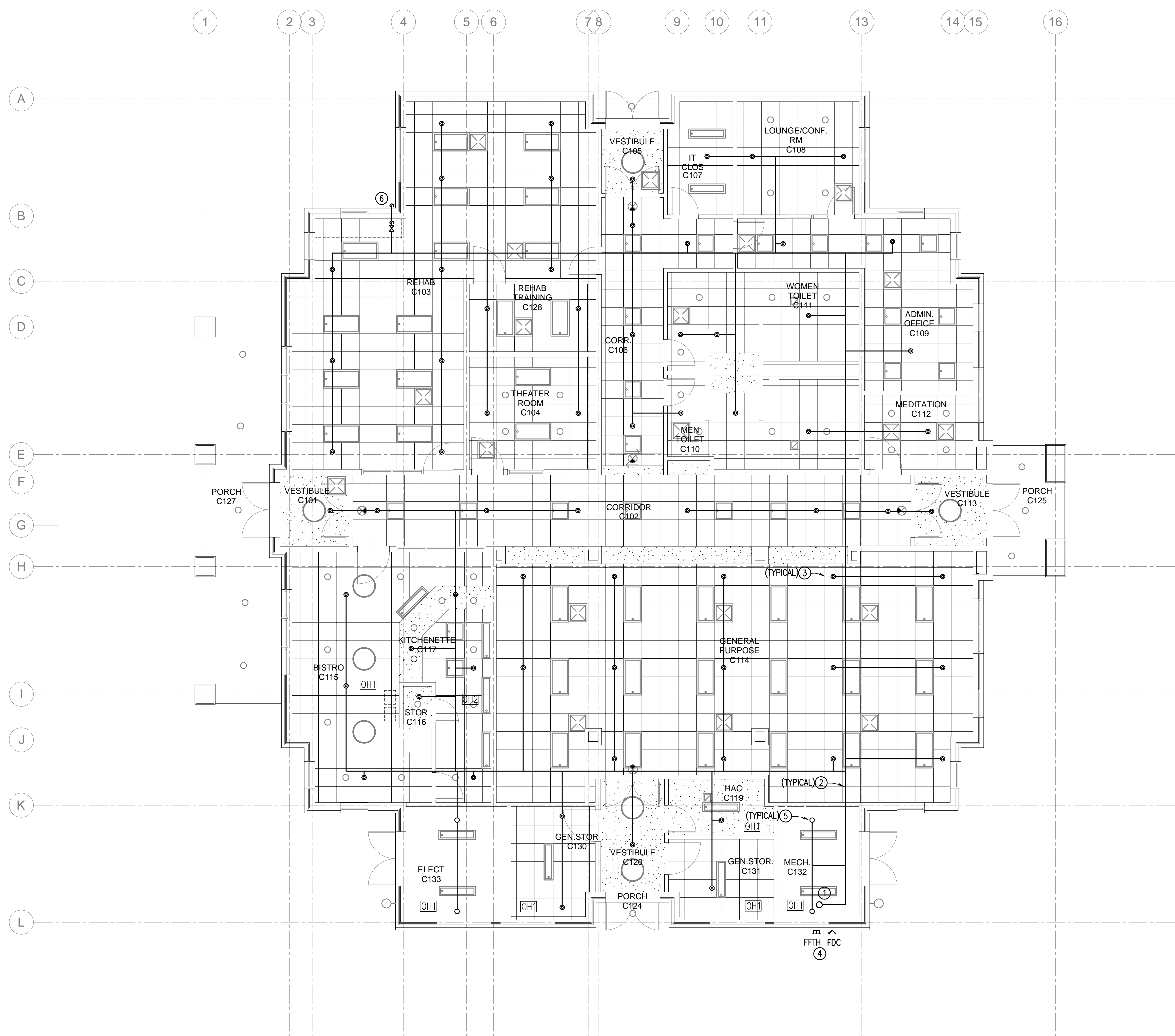
FINAL SUBMITTAL

OFFICE OF
CONSTRUCTION
AND FACILITIES
MANAGEMENT

Department of
Veterans Affairs

A three inches = one foot
B one and one-half inches = one foot
C one inch = one foot
D three-quarters inch = one foot
E one-half inch = one foot
F three-eighths inch = one foot
G one-quarter inch = one foot
H one-eighth inch = one foot

1
2
3
4
5
6
7
8
9



- KEYED NOTES:**
(THIS DRAWING ONLY)
- ① INSTALL FIRE PROTECTION ENTRANCE RISER AT THIS LOCATION IN ACCORDANCE WITH NFPA 13. REFER TO DETAILS ON SHEET F501.
 - ② ALL SPRINKLER PIPING SHALL BE SUPPORTED FROM BUILDING STRUCTURE. REFER TO DETAILS ON SHEET F501.
 - ③ INSTALL PENDENT SPRINKLER HEADS IN FINISHED CEILINGS. HEADS SHALL BE IN CENTER OF TILE IN CEILINGS WITH ACOUSTICAL TILES. HEADS IN GYPSUM BOARD CEILINGS SHALL BE UNIFORMLY SPACED IN ACCORDANCE WITH NFPA 13. REFER TO DETAILS ON SHEET F501.
 - ④ PROVIDE SURFACE MOUNTED FIRE DEPARTMENT CONNECTION AND FORWARD FLOW TEST HEADER AT THIS APPROXIMATE LOCATION.
 - ⑤ INSTALL UPRIGHT SPRINKLER HEADS IN ALL AREAS WITH NO CEILING OR OPEN TO DECK ABOVE. REFER TO DETAILS ON SHEET F501.
 - ⑥ PROVIDE INSPECTORS TEST VALVE ABOVE CEILING AT THIS APPROXIMATE LOCATION. DISCHARGE PIPING SHALL PENETRATE EXTERIOR WALL AND TERMINATED AT 6" ABOVE FINISHED GRADE. PENETRATION MUST BE SEALED WATERPROOF. PROVIDE SPLASH BLOCK FOR DISCHARGE POINT. REFER TO DETAILS ON SHEET F501.

COMMUNITY CENTER FLOOR PLAN
SCALE: 3/16" = 1'-0"

Revisions: <table><tr><td> </td><td> </td></tr><tr><td> </td><td> </td></tr><tr><td> </td><td> </td></tr><tr><td> </td><td> </td></tr><tr><td> </td><td> </td></tr><tr><td> </td><td> </td></tr><tr><td> </td><td> </td></tr><tr><td> </td><td> </td></tr><tr><td> </td><td> </td></tr><tr><td> </td><td> </td></tr></table>																					CONSULTANTS: CLARKNEXSEN 440 Martin Luther King Jr. Blvd Macon, GA 31201 478.743.8415 Fax: 478.743.8239 www.clarknexsen.com Clark Nexsen License # C-1028	 ARCHITECT/ENGINEERS: 590 MEANS ST NW ATLANTA GA 30318	Drawing Title: COMMUNITY CENTER FLOOR PLAN Approved: Project Director	Project Title: REPLACEMENT OF COMMUNITY LIVING CENTER POD PHASE II Location: FAYETTEVILLE, NC	Project Number: 565-133 Building Number: Drawing Number: FX103 Dw 97 of 143	Office of Construction and Facilities Management Department of Veterans Affairs
Date: OCTOBER 15, 2015	Checked: RWC	Drawn: PNW																								

three inches = one foot
one and one-half inches = one foot
one inch = one foot
three-quarters inch = one foot
one-half inch = one foot
three-eighths inch = one foot
one-quarter inch = one foot
one-eighth inch = one foot
one-eight inch = one foot

Revisions: Date: FILE NAME: V:\Projects\5500\5810-100 Fayetteville, CLC Phase II\Drawings\5810-100.dwg LAYOUT NAME: 5810 F501 PLOTTED: 10/6/2015 11:28am

CONSULTANTS:

CLARKNEXSEN

440 Martin Luther King Jr. Blvd
Macon, GA 31201
478.743.8415 Fax: 478.743.8239
www.clarknexsen.com
Clark Nexsen License # C-1028



ARCHITECT/ENGINEERS:



Drawing Title:
DETAILS

Approved: Project Director

Project Title:
**REPLACEMENT OF
COMMUNITY LIVING
CENTER POD PHASE II**

Location:
FAYETTEVILLE, NC

Date:
OCTOBER 15, 2015

Checked:
RWC

Drawn:
PNW

Project Number:
565-133

Building Number:

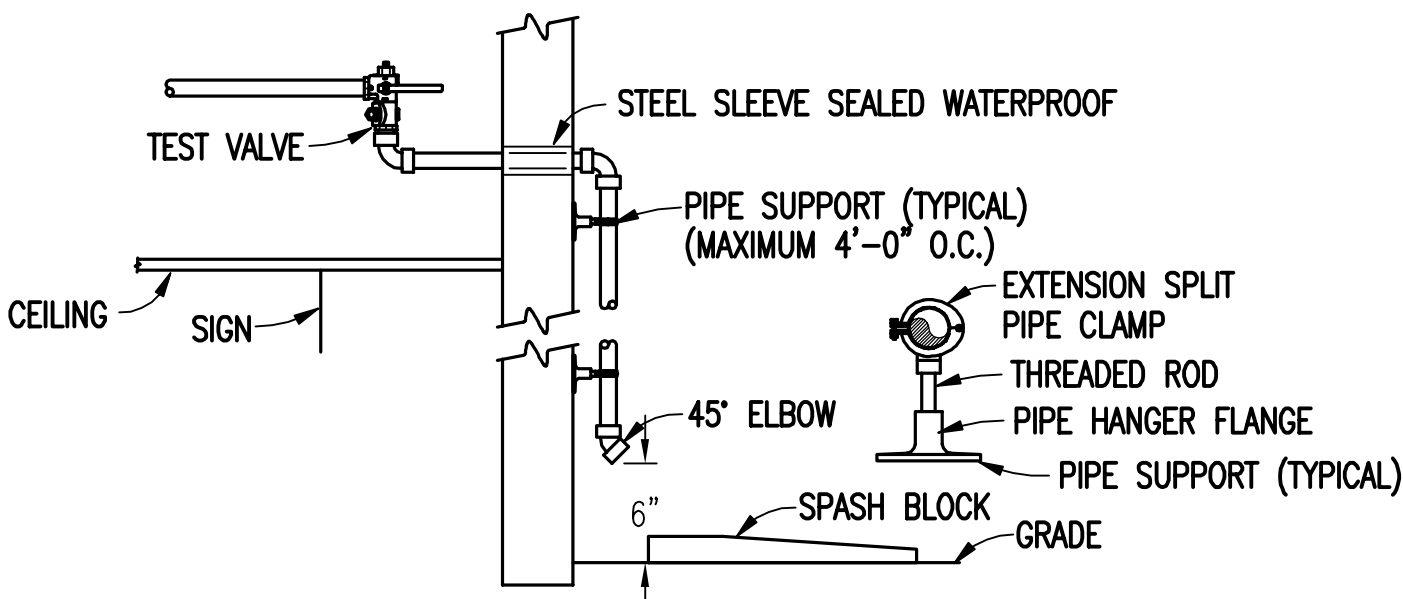
Drawing Number:

F501
Dwg 98 of 143

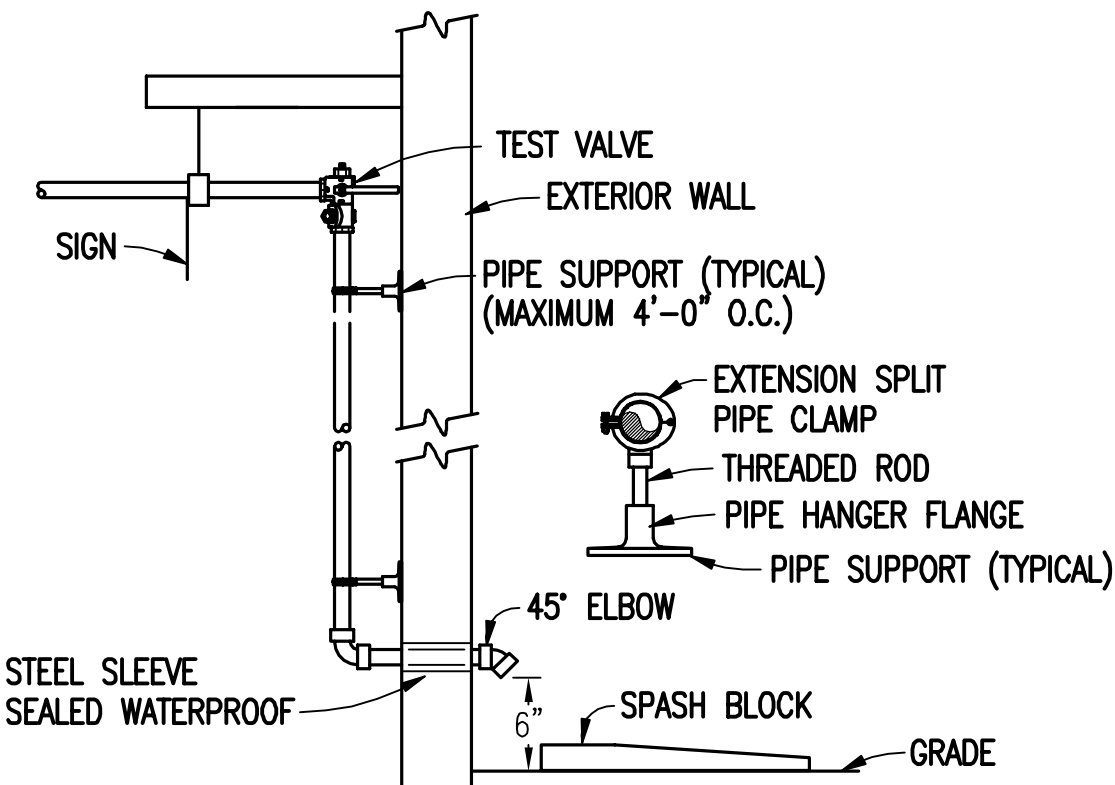
FINAL SUBMITTAL

OFFICE OF
CONSTRUCTION
AND FACILITIES
MANAGEMENT

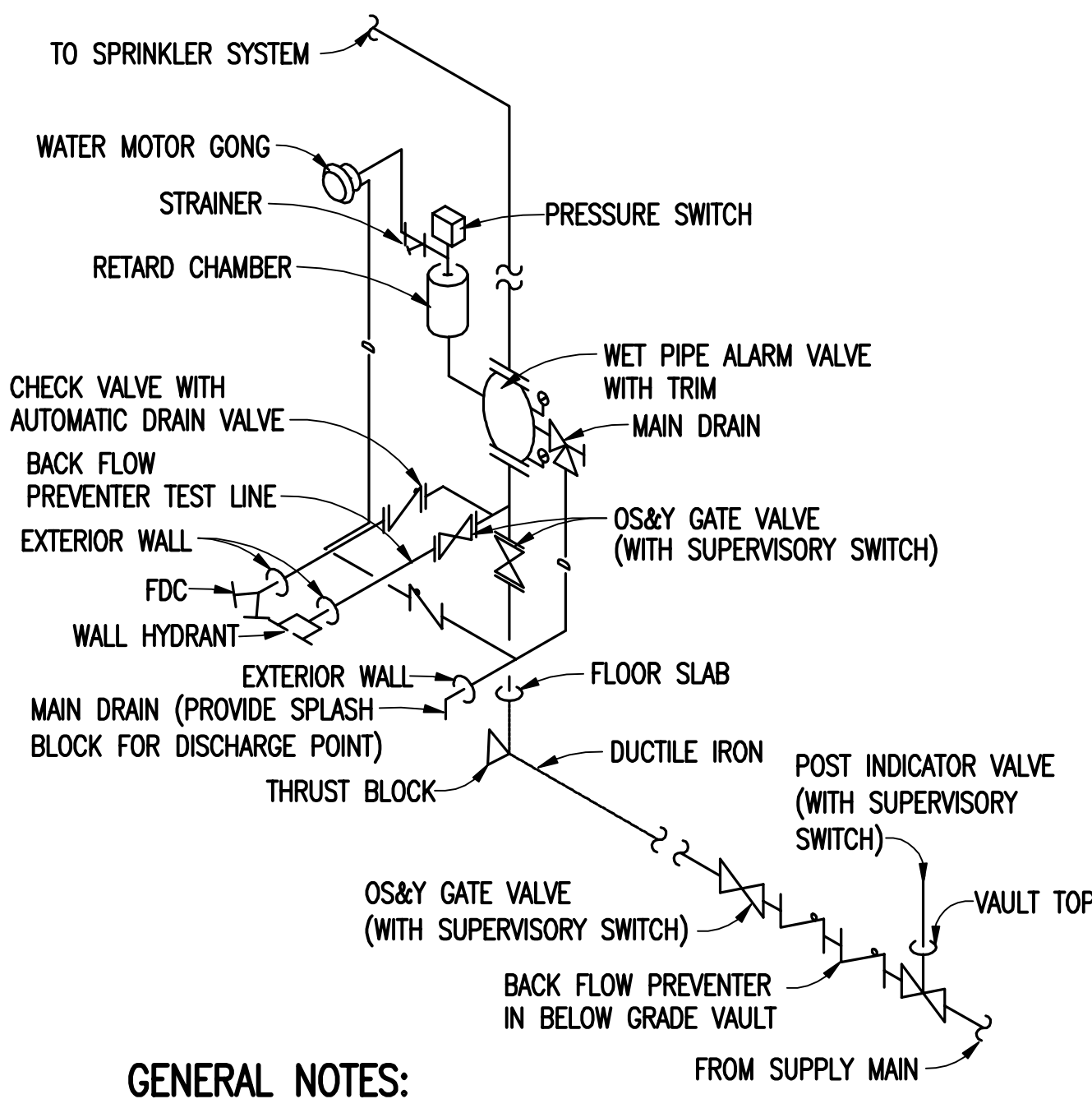
Department of
Veterans Affairs



INSPECTORS TEST VALVE DETAIL
SCALE: NONE



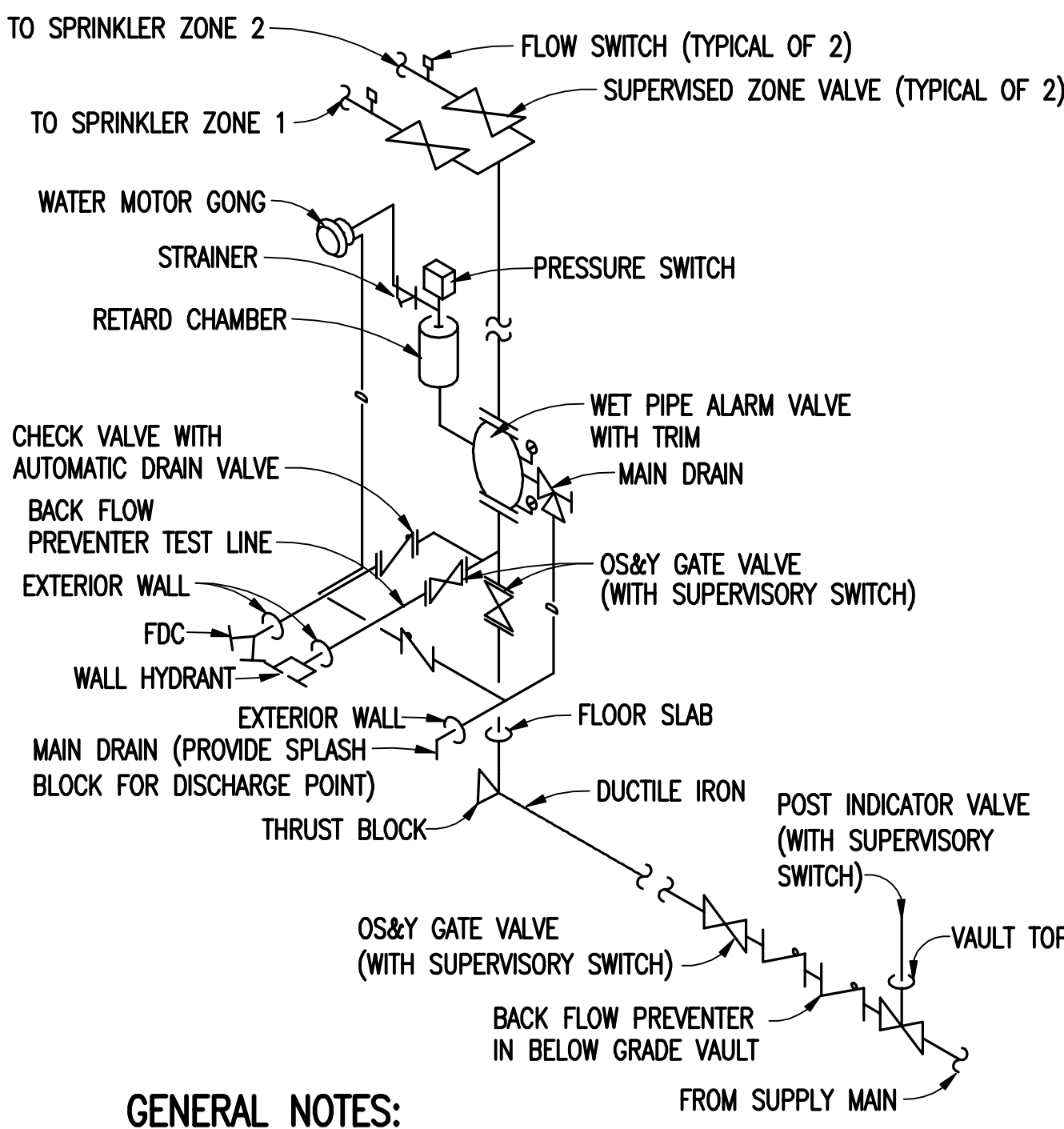
INSPECTORS TEST VALVE DETAIL
SCALE: NONE



GENERAL NOTES:
(WET SYSTEM RISER DETAIL ONLY)

- (A) INSTALL PIPING RESTRAINTS IN ACCORDANCE WITH NFPA 24.
(B) INSTALL ALL SIGNS IN ACCORDANCE WITH NFPA 13.

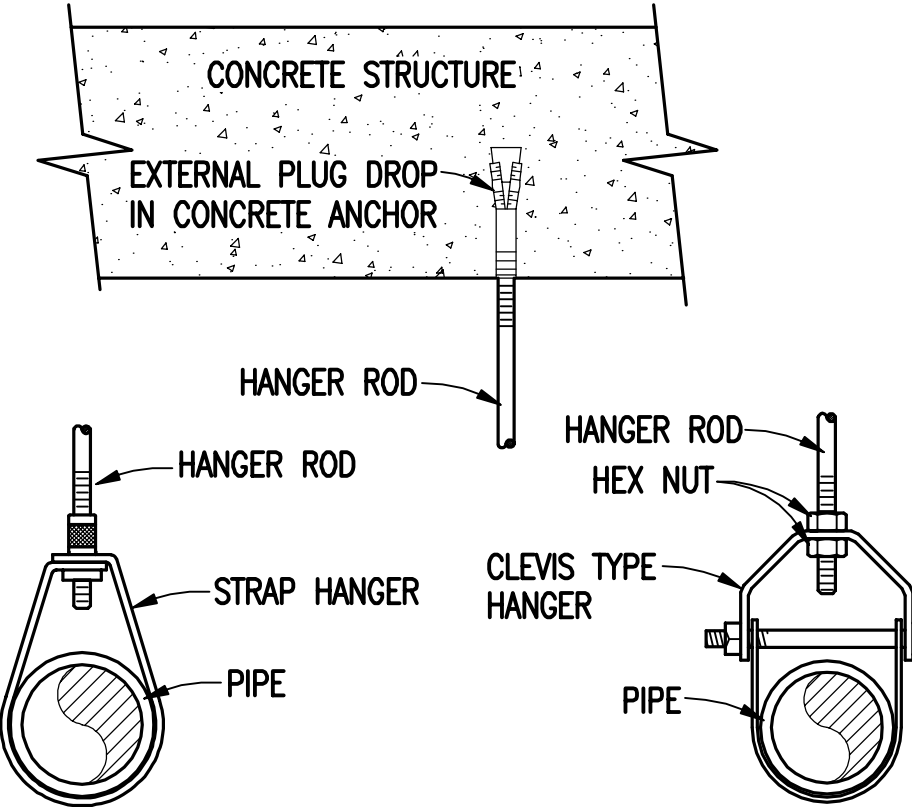
COMMUNITY CENTER WET SYSTEM
FIRE PROTECTION ENTRANCE RISER DETAIL
SCALE: NONE



GENERAL NOTES:
(WET SYSTEM RISER DETAIL ONLY)

- (A) INSTALL PIPING RESTRAINTS IN ACCORDANCE WITH NFPA 24.
(B) INSTALL ALL SIGNS IN ACCORDANCE WITH NFPA 13.

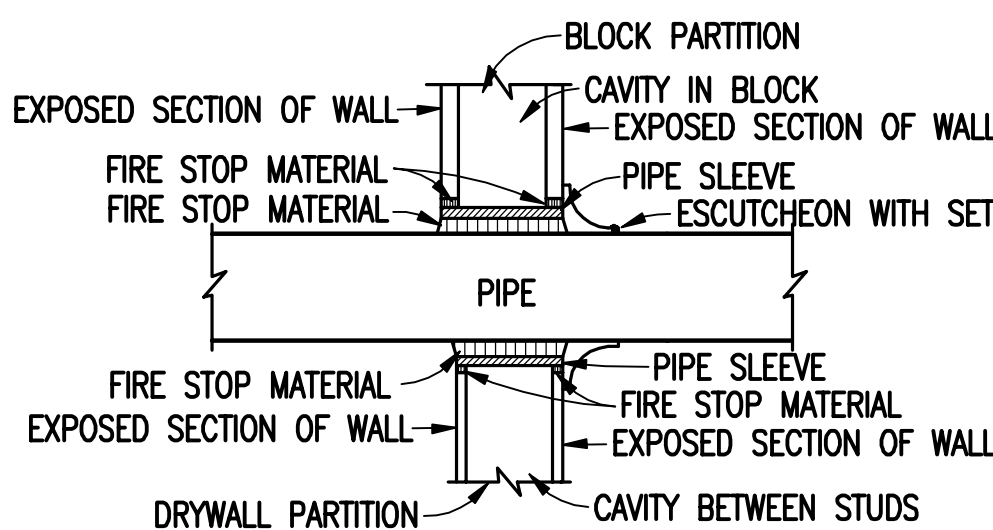
13 BED UNIT WET SYSTEM
FIRE PROTECTION ENTRANCE RISER DETAIL
SCALE: NONE



GENERAL NOTES:
(HANGER DETAIL ONLY)

- (A) ALL HANGERS SHALL BE SPACED IN ACCORDANCE WITH PIPE MANUFACTURERS REQUIREMENTS.

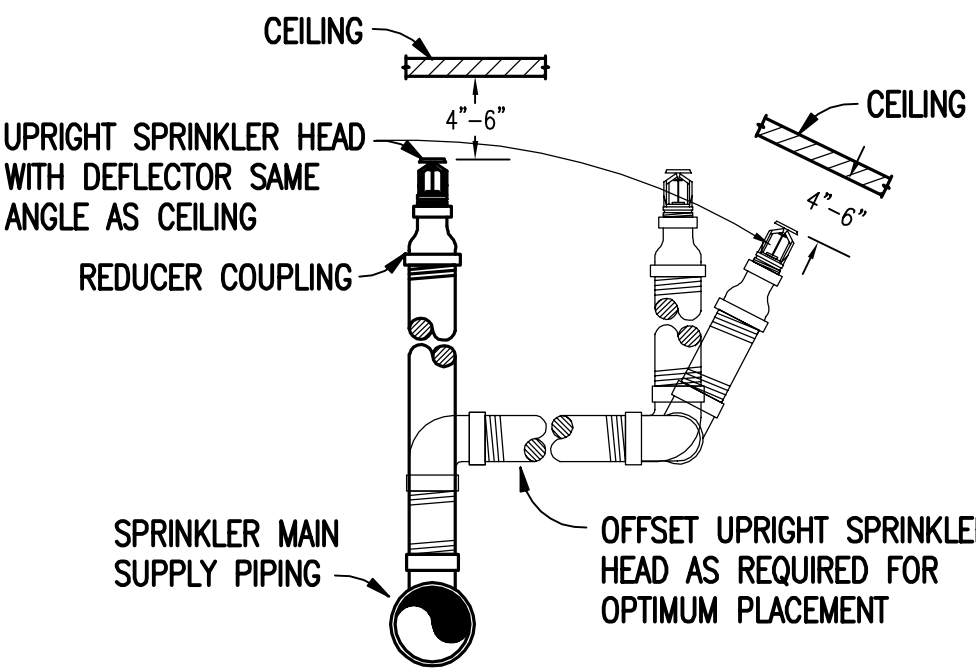
PIPE HANGER DETAIL
SCALE: NONE



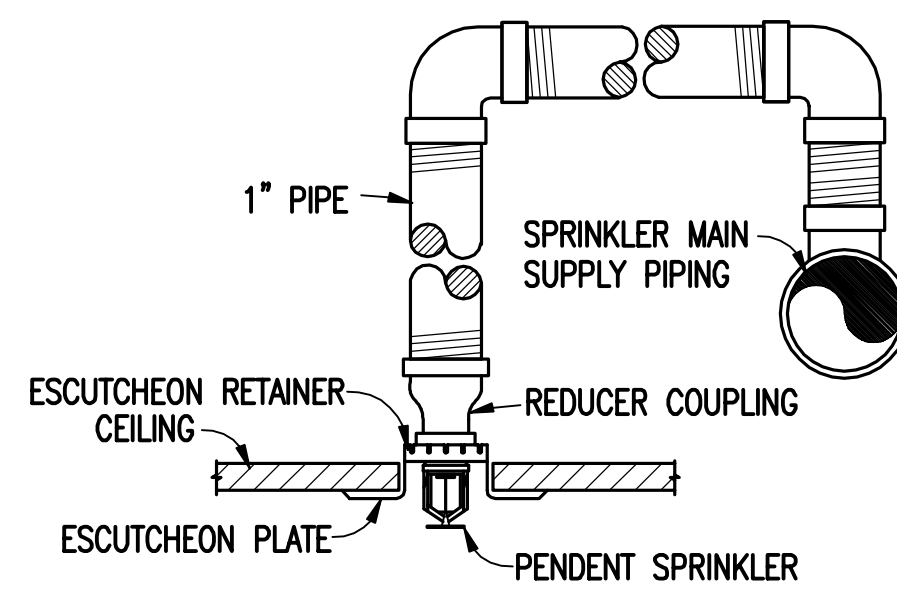
GENERAL NOTES:
(SLEEVE DETAIL ONLY)

- (A) APPLICABLE TO PENETRATIONS OF ALL WALLS AND FIRE RATED MEMBRANES, IN ACCORDANCE WITH IBC
(B) FIRE STOP MATERIAL ON EXPOSED SECTION OF WALLS SHALL BE FINISHED UNIFORMED, SMOOTH AND PAINTED TO MATCH SURROUNDING AREA.

WALL PENETRATION AND SLEEVE DETAIL
SCALE: NONE



UPRIGHT SPRINKLER HEAD DETAIL
SCALE: NONE



DROP TO
PENDENT SPRINKLER HEAD DETAIL
SCALE: NONE