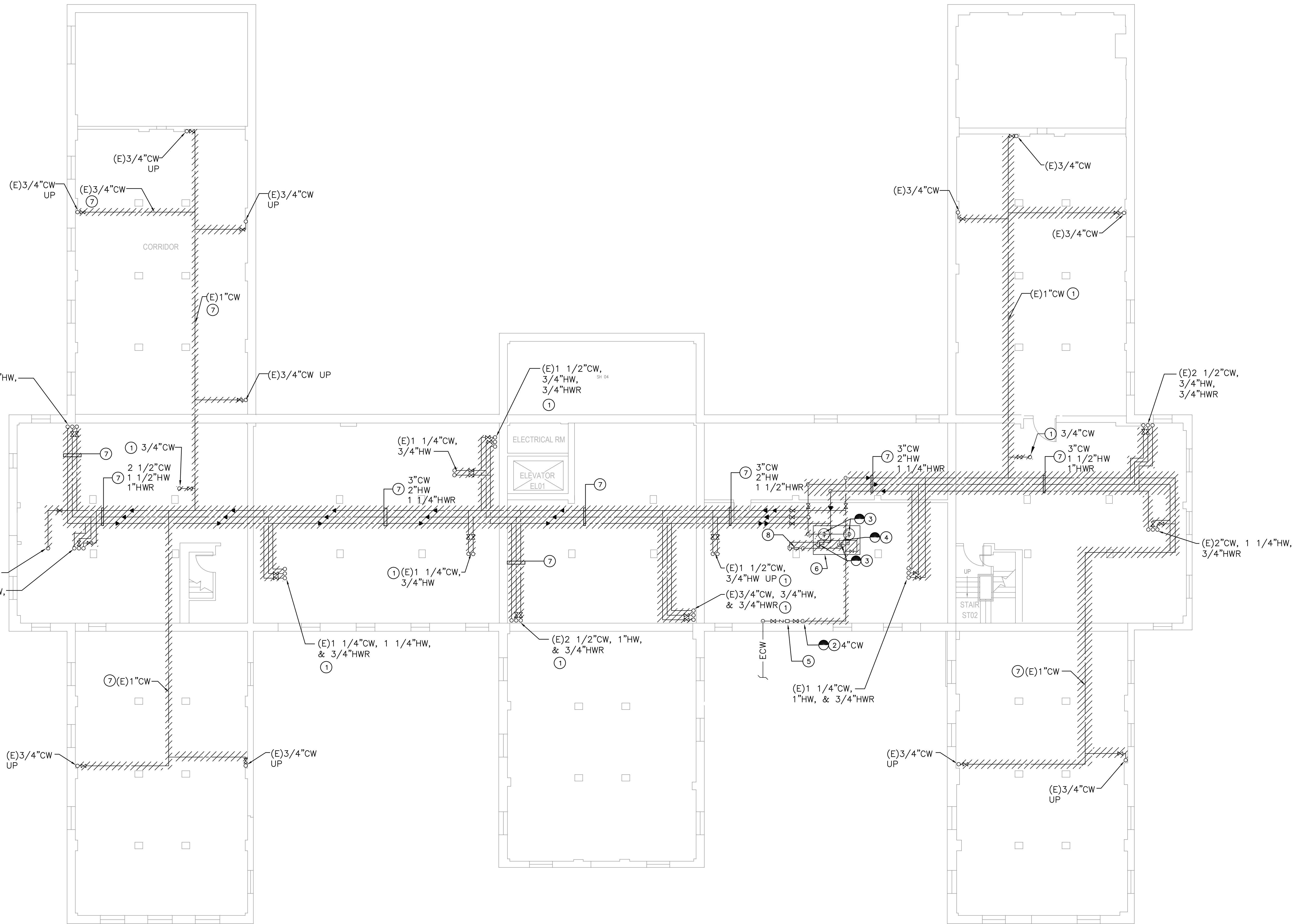


three inches = one foot  
one and one half inches = one foot  
one inch = one foot  
three quarters inch = one foot  
one half inch = one foot  
three eighths inch = one foot  
one quarter inch = one foot  
one eighth inch = one foot



- ### GENERAL NOTES
- ALL (E) PLUMBING FIXTURES, ASSOCIATED FLUSH VALVES, AND STOP VALVES TO REMAIN.
  - ALL (E) ABANDONED PIPING INSIDE (E) WALLS FROM PREVIOUS RENOVATION PROJECTS TO BE DEMOLISHED.

- ### KEY NOTES
- (E) DOMESTIC COLD, HOT, AND HOT WATER RETURN RISERS TO BE DEMOLISHED.
  - POINT OF DISCONNECTION TO (E) DOMESTIC COLD WATER LINE.
  - P.O.D. OF (E) DOMESTIC HOT WATER LINE.
  - P.O.D. OF (E) DOMESTIC HOT WATER RETURN LINE.
  - (E) SHUT-OFF VALVES, CHECK VALVE, AND PRESSURE REGULATOR VALVE TO REMAIN.
  - DISCONNECT AND DEMOLISH (E) COLD WATER, HOT WATER, HOT WATER RETURN, ASSOCIATED VALVES AND FITTINGS UP TO THE (E) HEAT EXCHANGER INLET AND OUTLET CONNECTIONS. (E) TWO (2) HEAT EXCHANGERS TO REMAIN.
  - (E) SUPPLY PIPING AND ASSOCIATED VALVES OVERHEAD/ABOVE CEILING TO BE DEMOLISHED.
  - (E) CIRCULATION PUMP, ASSOCIATED VALVES AND THERMOSTAT GAUGE TO BE DEMOLISHED.

### KEY PLAN

1 PLUMBING BASEMENT FLOOR DEMOLITION PLAN  
SCALE: 1/8" = 1'-0"

100% CD SUBMITTAL	08/05/15	ARCHITECT/ENGINEERS/CONSULTANTS:		VA PROJECT ENGINEER (138E)		CHIEF, OCCUPATIONAL SAFETY AND HEALTH (130)		Drawing Title PLUMBING LOWER BASEMENT FLOOR DEMOLITION PLAN		Project Title CORRECT POTABLE WATER DEFICIENCIES - BUILDING 256/257		Project Number 691-15-115-WL		Office of Facilities Management Department of Veterans Affairs	
		 <b>Schwab</b> Engineering & Management A Certified SB/DVBE Firm 1000 E. Walnut Street, Suite 227, Pasadena, CA 91106 t: 888.900.3823 f: 626.463.2739 www.schwabeng.com Project No.: 0215.182.00		CHIEF, PROJECT SECTION (138E)		CHIEF, ENV. MANAGEMENT DEPT. (137)		Associate Director, Administration & Support Services (10A)		Location VA MEDICAL CENTER WEST LOS ANGELES, CA 90073		Building Number 256/257			
				CHIEF, MAINT. & OPERATIONS OFFICE (138F)		DIR., FACILITIES MANAGEMENT (10A4)		Date APRIL 14, 2015		Checked WM		Drawn LC			
				CHIEF, ENGINEERING DEPT. (138)		CHIEF OF STAFF (11)		Director (00)				Drawing Number 257-PD200			
Revisions:		Date:													