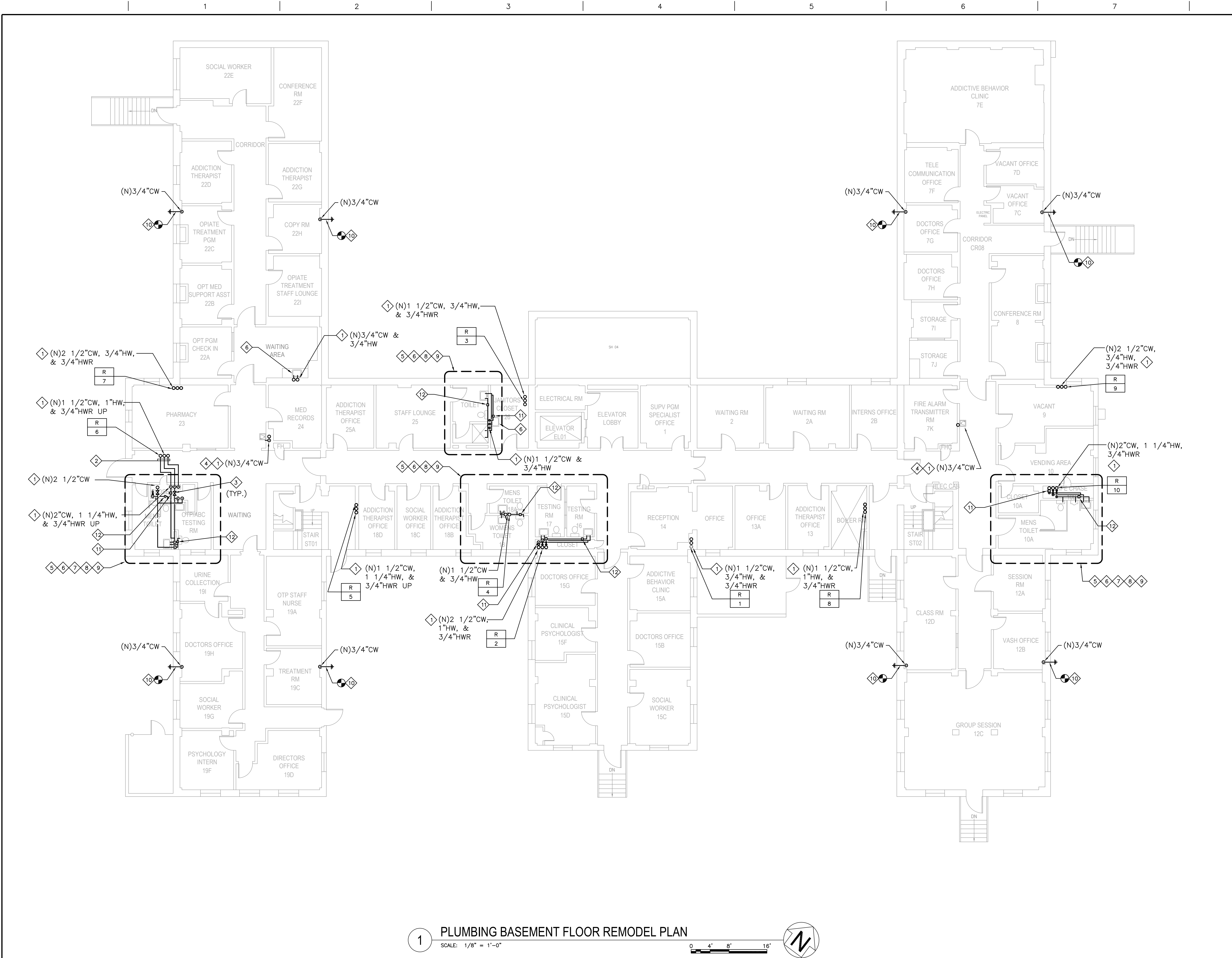


three eighths inch = one foot
one eighth inch = one foot
one quarter inch = one foot
one half inch = one foot
three quarters inch = one foot
one inch = one foot
one and one half inches = one foot
two inches = one foot
three inches = one foot



GENERAL NOTES

1. CONTRACTOR SHALL REPAIR WALLS, FLOOR, CEILING AND COUNTER THAT ARE AFFECTED BY DEMOLITION DURING CONSTRUCTION AND MATCH TO LOOK LIKE EXISTING.

2. BRACE (N) PIPING TIGHT ALONG (E) WALLS. PROVIDE (N) "UNISTRUT" PIPE BRACING WHERE APPLICABLE.

3. PROVIDE (N) HOT AND COLD WATER PIPING, AND STOP VALVES TO BE RECONNECTED TO (E) FIXTURES. CONTRACTOR SHALL REPAIR AND PATCH WALLS TO MATCH EXISTING.

4. ALL EXISTING PLUMBING FIXTURES AND ASSOCIATED VALVES AND STOPS TO REMAIN IN PLACE. CONNECT NEW DOMESTIC COLD WATER COPPER SUPPLY PIPING UP TO THE EXISTING WATER CLOSET AND URINAL'S VALVES ONLY. CONNECT NEW DOMESTIC COLD AND HOT WATER COPPER SUPPLY TO SINKS, LAVATORIES, BATHTUB, SHOWER, LAUNDRY, DRINKING FOUNTAIN (COLD), SERVICE SINKS UP TO THE EXISTING STOPS ONLY.

KEY NOTES

1 (N) DOMESTIC COLD, HOT, AND/OR HOT WATER RETURN RISERS.

2 (N) DOMESTIC WATER PIPING WITH NEW HANGERS.

3 (N) LINE-SIZE SHUT-OFF VALVE.

4 CONNECT (N) SUPPLY PIPING AND ASSOCIATED VALVES TO (E) DRINKING FOUNTAIN.

5 PROVIDE (N) 1 1/2" CW LINE TO (E) WATER CLOSET. POINT OF CONNECTION SHALL BE AT THE (E) FLUSH VALVE.

6 PROVIDE (N) 3/4" COLD WATER AND HOT WATER SUPPLY PIPING UP TO (E) LAVATORY/SINK/SERVICE SINK/SHOWER AND BATHTUB-MIXING VALVE. PROVIDE (N) STOPS AND FITTINGS AS REQUIRED.

7 PROVIDE (N) 1 1/4" CW LINE TO (E) URINAL. POINT OF CONNECTION SHALL BE AT THE (E) FLUSH VALVE.

8 (N) DOMESTIC COLD WATER COPPER HEADER IN PIPE CHASE. PROVIDE (N) WATER HAMMER ARRESTER BEFORE THE LAST (E) FLUSH VALVE LOCATION.

9 PROVIDE (N) 3/4" CW LINE TO (E) HOSE BIBB.

10 POINT OF CONNECTION TO (E) EXTERIOR HOSE BIBB.

11 PROVIDE (N) BALANCING VALVE AT THE HOT WATER RETURN LINE PRIOR TO CONNECTING BACK TO RISER. PROVIDE (N) ACCESS PANEL.

12 PROVIDE (N) LINE-SIZED WATER HAMMER ARRESTER AT COLD WATER HEADER WITH ACCESS PANEL.

KEY PLAN

100% CD SUBMITTAL		08/05/15	ARCHITECT/ENGINEERS/CONSULTANTS:			VA PROJECT ENGINEER (138E)		CHIEF, OCCUPATIONAL SAFETY AND HEALTH (130)	Drawing Title		Project Title		Project Number		 Department of Veterans Affairs	
			 A Certified SB/DVBE Firm 1000 E. Walnut Street, Suite 227, Pasadena, CA 91106 t: 888.900.3823 f: 626.463.2739 www.schwabeng.com Project No.: 0215.182.00			CHIEF, PROJECT SECTION (138E)		CHIEF, ENV. MANAGEMENT DEPT. (137)	PLUMBING BASEMENT FLOOR REMODEL PLAN		CORRECT POTABLE WATER DEFICIENCIES - BUILDING 256/257		691-15-115-WL			
Revisions:		Date				CHIEF, MAINT. & OPERATIONS OFFICE (138F)		DIR., FACILITIES MANAGEMENT (10A4)	ASSOCIATE DIRECTOR, ADMINISTRATION & SUPPORT SERVICES (10A)		Location		Building Number			
						CHIEF, ENGINEERING DEPT. (138)		CHIEF OF STAFF (11)	DIRECTOR (00)		VA MEDICAL CENTER WEST LOS ANGELES, CA 90073		256/257			
											Date		Checked	Drawn	Drawing Number	
											APRIL 14, 2015		WM	LC	257-PL200	
															Dwg. 16 of 20	