

**STATEMENT OF WORK FOR PHARMACY CLEAN ROOM AND HOOD MONITORING AND CERTIFICATION  
WILKES-BARRE VETERANS AFFAIRS MEDICAL CENTER (Photographs).**



**STATEMENT OF WORK FOR PHARMACY CLEAN ROOM AND HOOD MONITORING AND CERTIFICATION  
WILKES-BARRE VETERANS AFFAIRS MEDICAL CENTER (Photographs).**



A3-38\_1

# STATEMENT OF WORK FOR PHARMACY CLEAN ROOM AND HOOD MONITORING AND CERTIFICATION WILKES-BARRE VETERANS AFFAIRS MEDICAL CENTER (Photographs).



**STATEMENT OF WORK FOR PHARMACY CLEAN ROOM AND HOOD MONITORING AND CERTIFICATION  
WILKES-BARRE VETERANS AFFAIRS MEDICAL CENTER (Photographs).**



A3-38B

# STATEMENT OF WORK FOR PHARMACY CLEAN ROOM AND HOOD MONITORING AND CERTIFICATION WILKES-BARRE VETERANS AFFAIRS MEDICAL CENTER (Photographs).



A3-38B\_1



# STATEMENT OF WORK FOR PHARMACY CLEAN ROOM AND HOOD MONITORING AND CERTIFICATION WILKES-BARRE VETERANS AFFAIRS MEDICAL CENTER (Photographs).



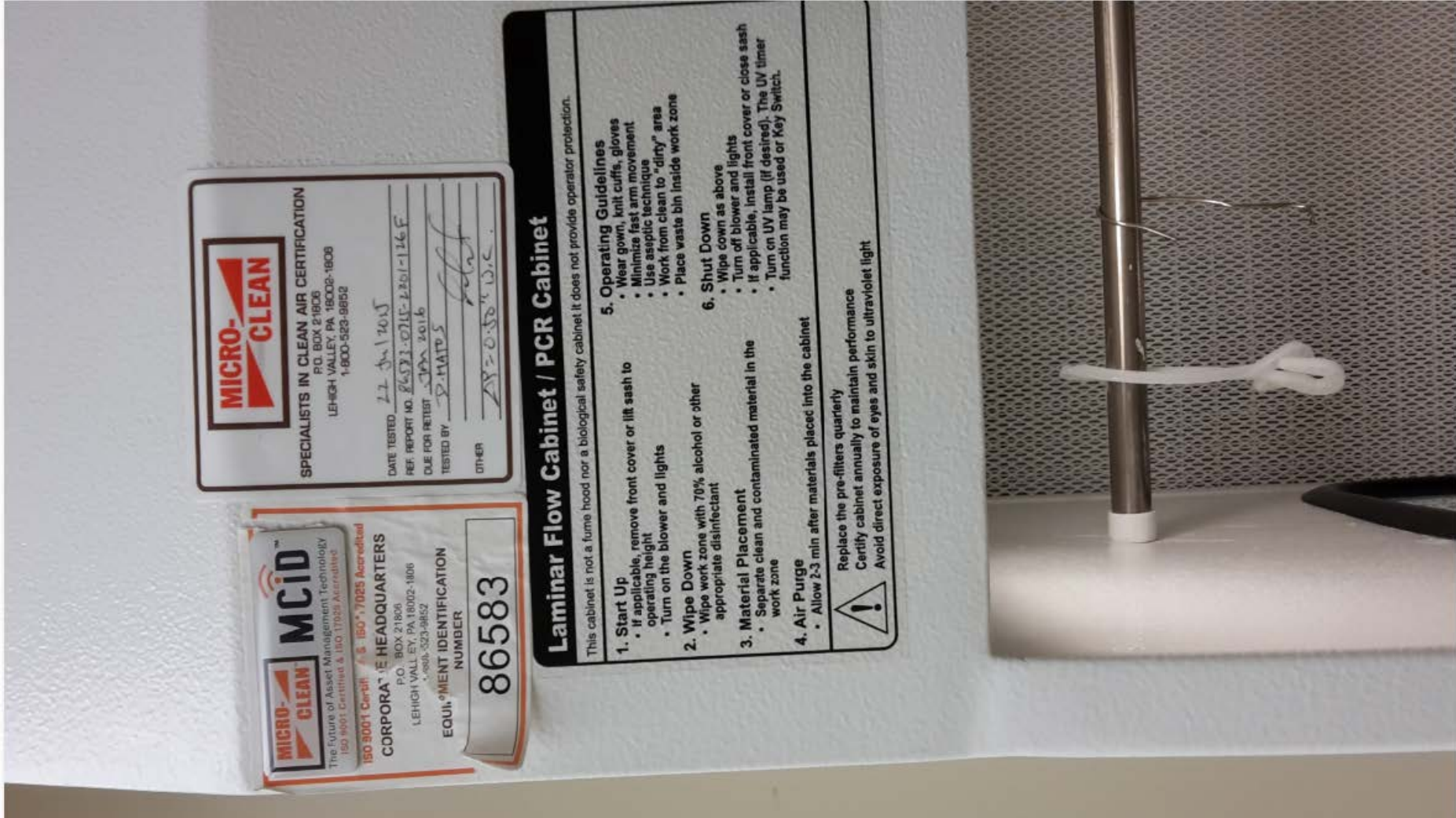
A3-38B\_2

**STATEMENT OF WORK FOR PHARMACY CLEAN ROOM AND HOOD MONITORING AND CERTIFICATION  
WILKES-BARRE VETERANS AFFAIRS MEDICAL CENTER (Photographs).**



A3-38B\_3

STATEMENT OF WORK FOR PHARMACY CLEAN ROOM AND HOOD MONITORING AND CERTIFICATION  
WILKES-BARRE VETERANS AFFAIRS MEDICAL CENTER (Photographs).





**STATEMENT OF WORK FOR PHARMACY CLEAN ROOM AND HOOD MONITORING AND CERTIFICATION  
WILKES-BARRE VETERANS AFFAIRS MEDICAL CENTER (Photographs).**



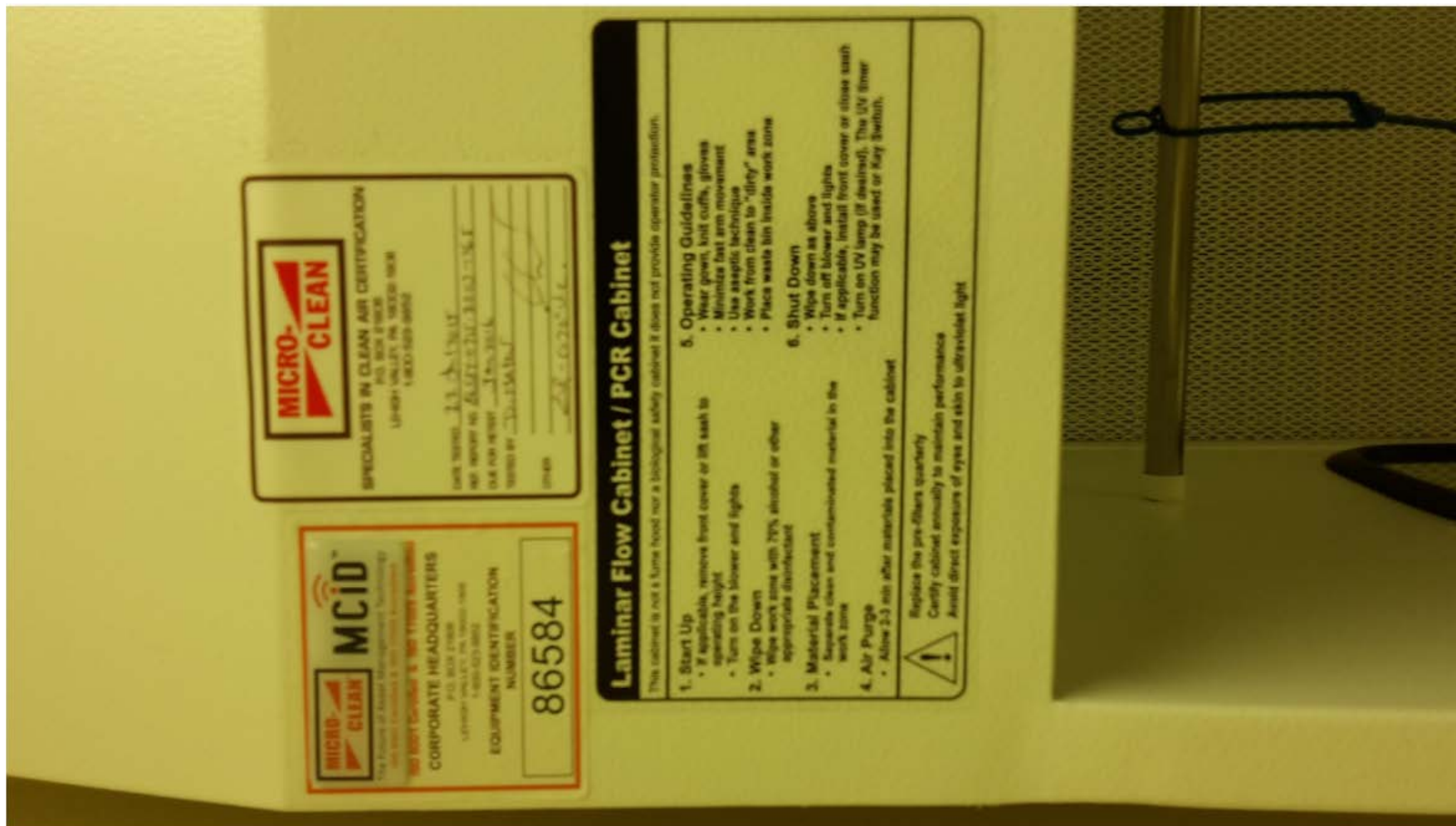
CB-89B\_1.2

**STATEMENT OF WORK FOR PHARMACY CLEAN ROOM AND HOOD MONITORING AND CERTIFICATION  
WILKES-BARRE VETERANS AFFAIRS MEDICAL CENTER (Photographs).**



CB-89B\_1

# STATEMENT OF WORK FOR PHARMACY CLEAN ROOM AND HOOD MONITORING AND CERTIFICATION WILKES-BARRE VETERANS AFFAIRS MEDICAL CENTER (Photographs).



CB-89B\_2.2

**STATEMENT OF WORK FOR PHARMACY CLEAN ROOM AND HOOD MONITORING AND CERTIFICATION  
WILKES-BARRE VETERANS AFFAIRS MEDICAL CENTER (Photographs).**



CB-89B\_2.3



**STATEMENT OF WORK FOR PHARMACY CLEAN ROOM AND HOOD MONITORING AND CERTIFICATION  
WILKES-BARRE VETERANS AFFAIRS MEDICAL CENTER (Photographs).**



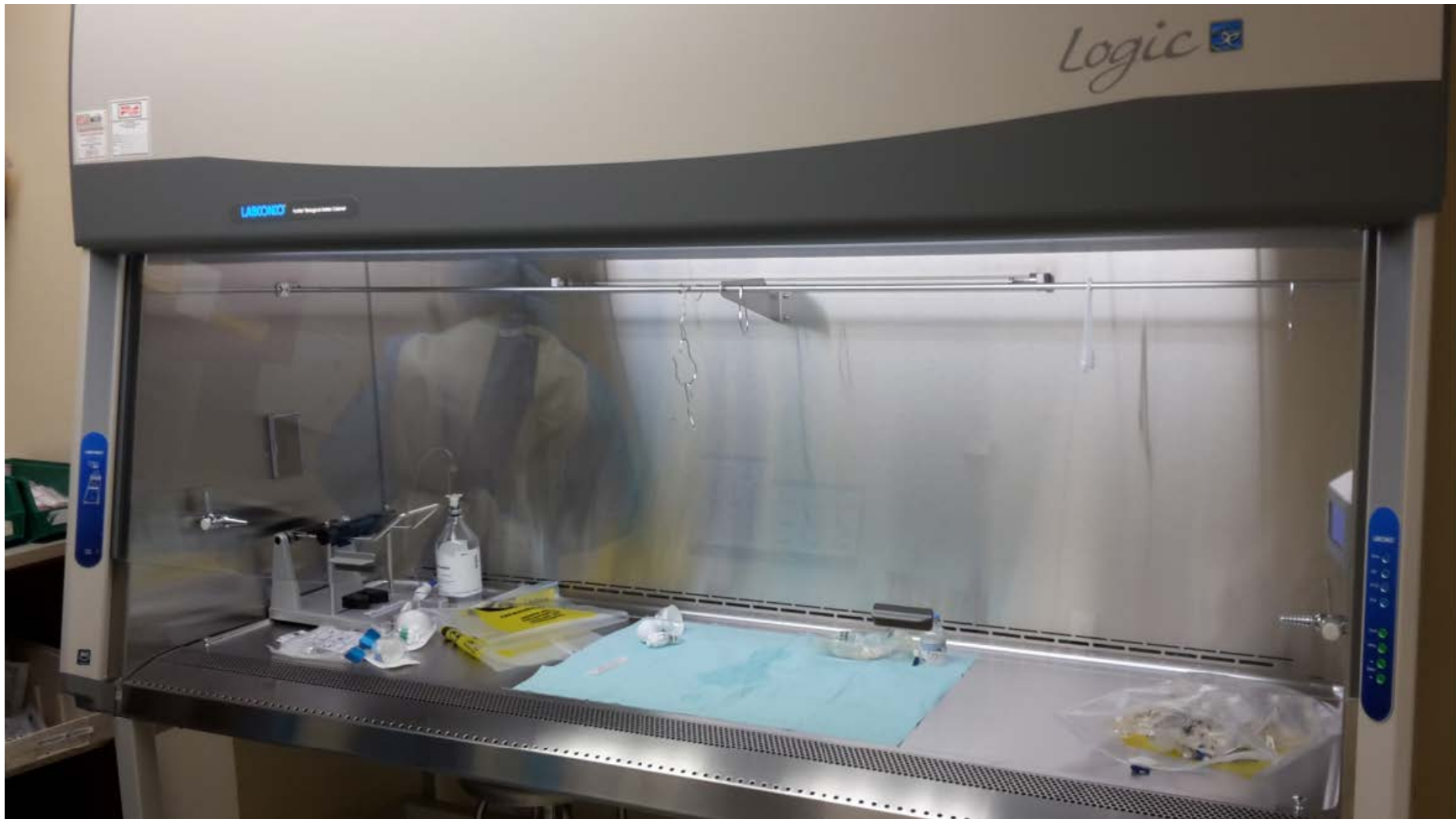
CB-89B\_2



STATEMENT OF WORK FOR PHARMACY CLEAN ROOM AND HOOD MONITORING AND CERTIFICATION  
WILKES-BARRE VETERANS AFFAIRS MEDICAL CENTER (Photographs).

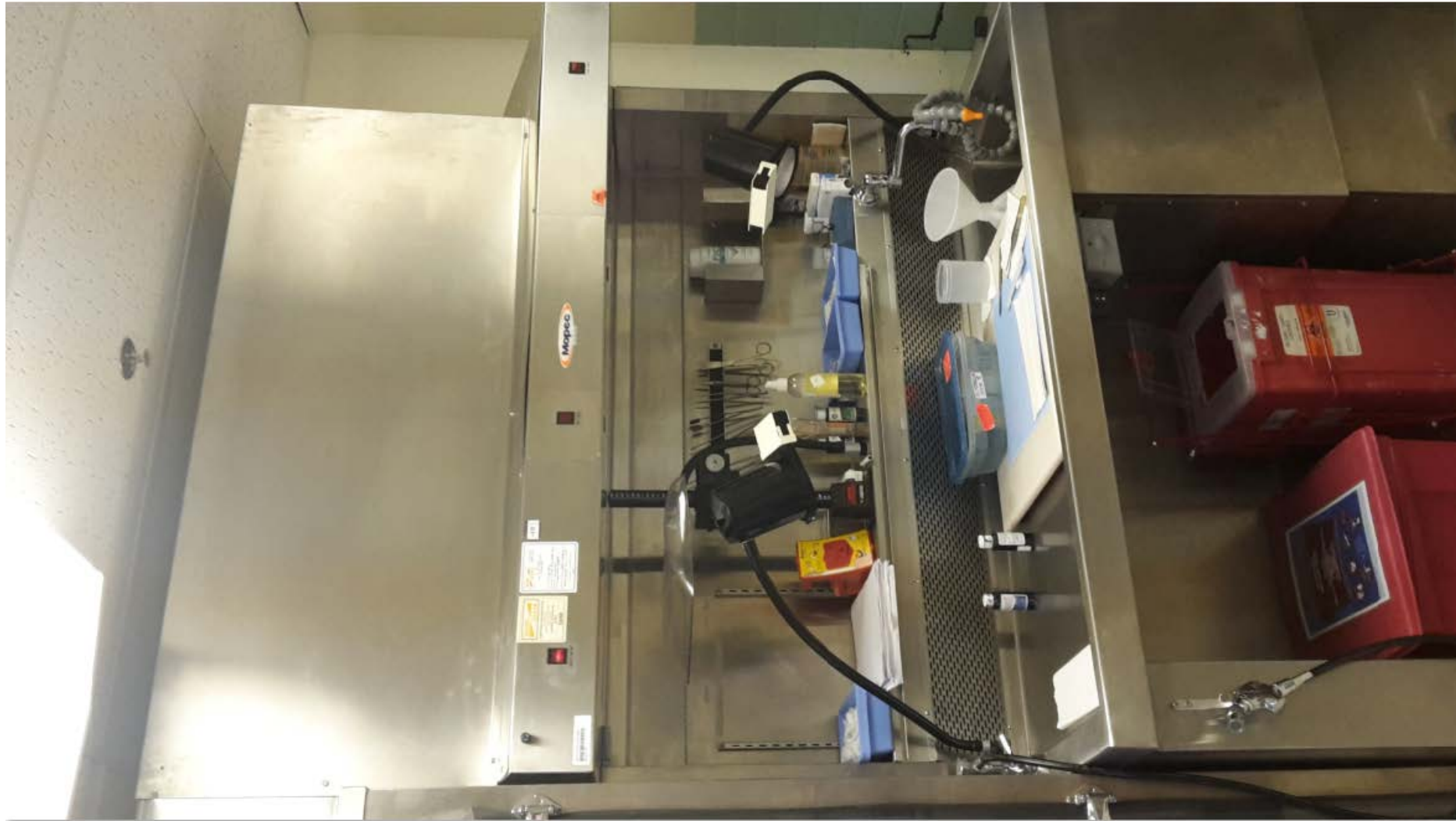


**STATEMENT OF WORK FOR PHARMACY CLEAN ROOM AND HOOD MONITORING AND CERTIFICATION  
WILKES-BARRE VETERANS AFFAIRS MEDICAL CENTER (Photographs).**



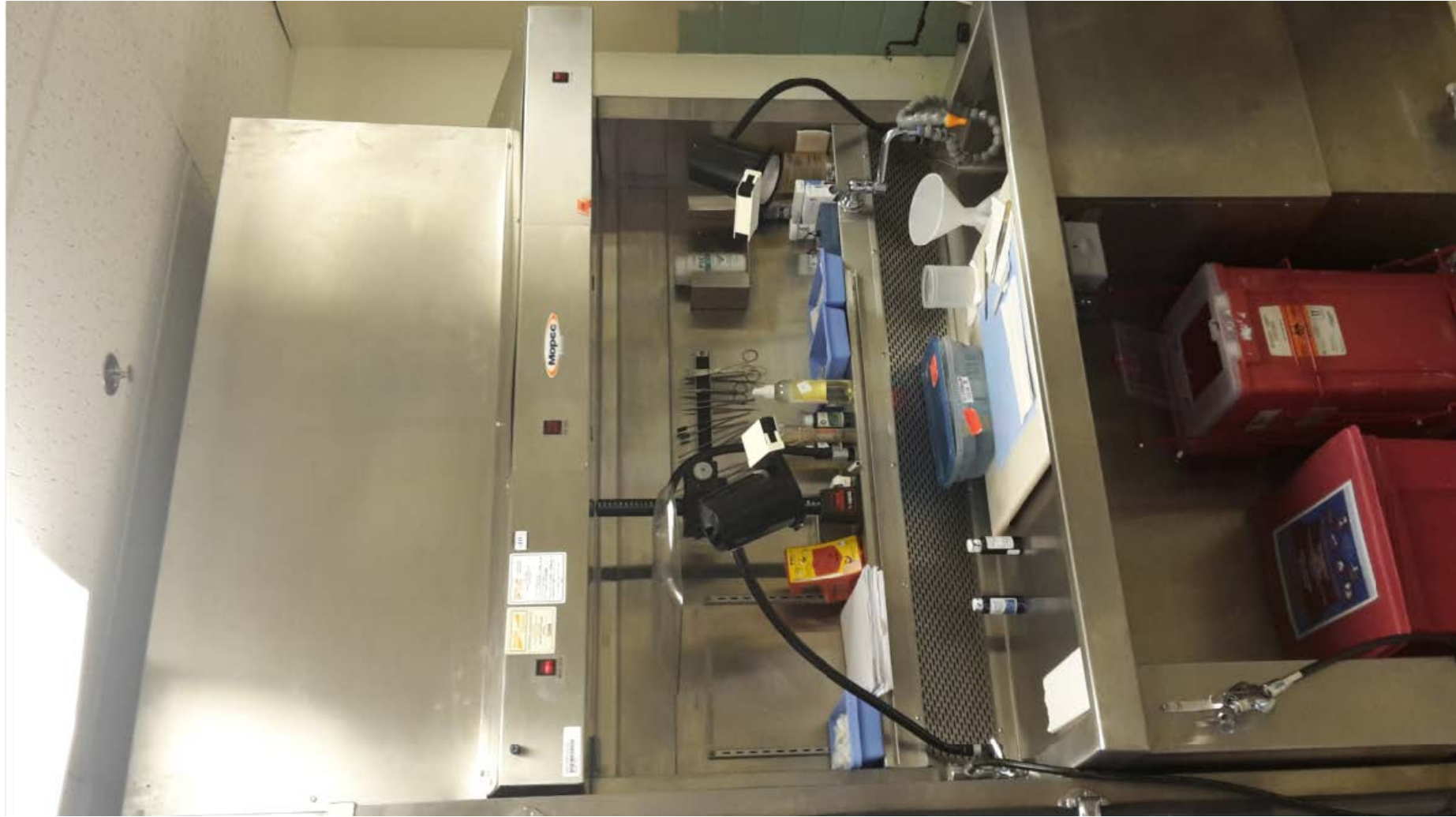
CB-89C\_2

**STATEMENT OF WORK FOR PHARMACY CLEAN ROOM AND HOOD MONITORING AND CERTIFICATION  
WILKES-BARRE VETERANS AFFAIRS MEDICAL CENTER (Photographs).**



NI-97 A

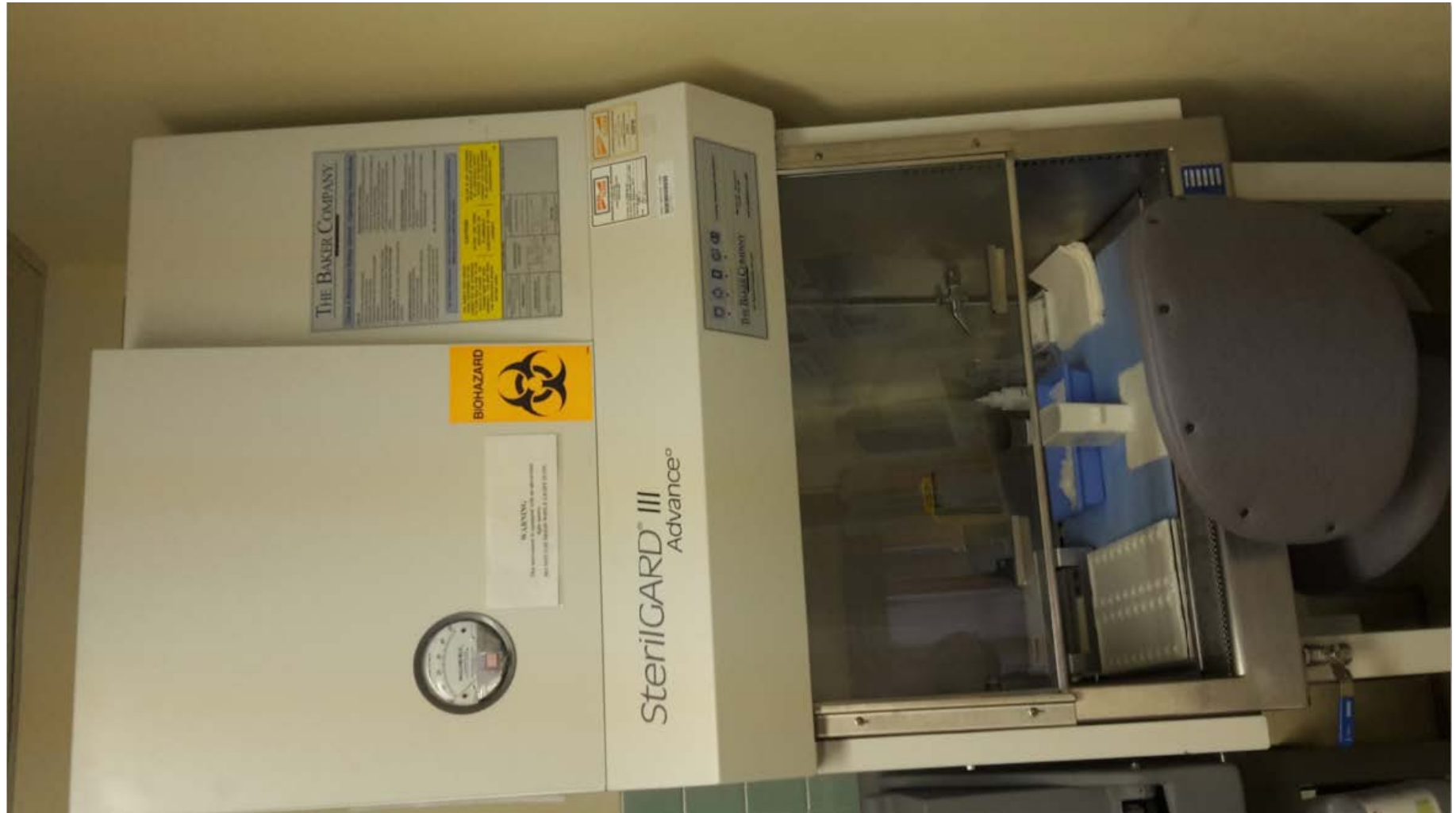
**STATEMENT OF WORK FOR PHARMACY CLEAN ROOM AND HOOD MONITORING AND CERTIFICATION  
WILKES-BARRE VETERANS AFFAIRS MEDICAL CENTER (Photographs).**



NI-97A1



**STATEMENT OF WORK FOR PHARMACY CLEAN ROOM AND HOOD MONITORING AND CERTIFICATION  
WILKES-BARRE VETERANS AFFAIRS MEDICAL CENTER (Photographs).**



NI-97B



**STATEMENT OF WORK FOR PHARMACY CLEAN ROOM AND HOOD MONITORING AND CERTIFICATION  
WILKES-BARRE VETERANS AFFAIRS MEDICAL CENTER (Photographs).**



NI-97B1

# STATEMENT OF WORK FOR PHARMACY CLEAN ROOM AND HOOD MONITORING AND CERTIFICATION WILKES-BARRE VETERANS AFFAIRS MEDICAL CENTER (Photographs).

## THE BAKER COMPANY

### Class II Biological Safety Cabinet - Operating Instructions

**Start-Up:**

- Turn on blower and fluorescent lights.
- Allow 5 minutes for air to clear.
- Check gauges for any obstructions.
- Disconnect all interior work surfaces with a suitable disinfectant.
- Place all materials and equipment needed in cabinet.
- Adjust view-screen to proper position. **This hood should not be used with the view-screen above the design opening mark.**
- Allow cabinet to run for at least 3 minutes before beginning procedure.

**Loading Materials and Equipment:**

- Load only items needed for procedure.
- Do not block front or rear grills.
- Disinfect exterior of all containers before beginning procedure.
- Arrange materials to minimize movement within cabinet.
- Once cabinet is loaded, lower view-screen and wait 3 minutes to purge any contaminants from work area.

**Recommended Work Techniques:**

- Wash hands and arms with germicidal soap before and after working in the cabinet.
- Wear proper garments (sterile gloves and lab coat/gown) and use proper aseptic technique.
- Perform all work on or over solid work surface, avoid working over or placing items on the front grill.
- To reduce turbulence, avoid rapid movements while working.
- Avoid moving hands and arms in and out of the cabinet.

**Final Purging and Wipe-down:**

- Allow cabinet to run 3 minutes before unloading to purge any airborne contaminants from the work area.
- Wipe down exterior of all containers before removing them from cabinet.
- Decontaminate interior surfaces of cabinet with suitable disinfectant/cleaning agent.

**We recommend that the cabinet run continuously.**

**For further information: Refer to Operator's Manual and consult your safety professional.  
Maintain regular certification schedule.**

**THE AGENTS USED AND/OR WORK PERFORMED IN THIS CABINET MAY BE HAZARDOUS TO YOUR HEALTH AND TO THE HEALTH OF OTHERS. THE CABINET MUST BE USED PROPERLY. YOU MUST READ THE OPERATOR'S MANUAL BEFORE USING.**

**-- CAUTIONS --**

**DO NOT USE TOXIC, EXPLOSIVE OR FLAMMABLE SUBSTANCES IN THIS CABINET.**

THE USE OF ANY CONTAINMENT HOOD SHOULD BE APPROVED BY A BIOLOGICAL SAFETY OFFICER OR INDUSTRIAL HYGIENIST FOR CONTAINMENT OF ANY PARTICULAR VIABLE HAZARDOUS AGENT.

**SCHEMATIC - CLASS II TYPE A2**

**REAR VELOCITY**  
Minimum: 0.15 m/s (30 fpm) to 0.25 m/s (50 fpm)  
Maximum: 0.30 m/s (60 fpm) to 0.35 m/s (70 fpm)

**PRIMARY METHOD**  
Continuous flow, continuously monitored by flow sensor, operating at 100% efficiency

**SECONDARY METHOD**  
Continuous flow, continuously monitored by flow sensor, operating at 100% efficiency

**SECONDARY METHOD**  
Transverse Locations

**Plan View**  
Measure velocities in horizontal plane level with bottom edge of grill

**DOWN FLOW VELOCITY**  
NOTE: REMOVE 0.5 MAH AND 0.5 L/S LIGHT

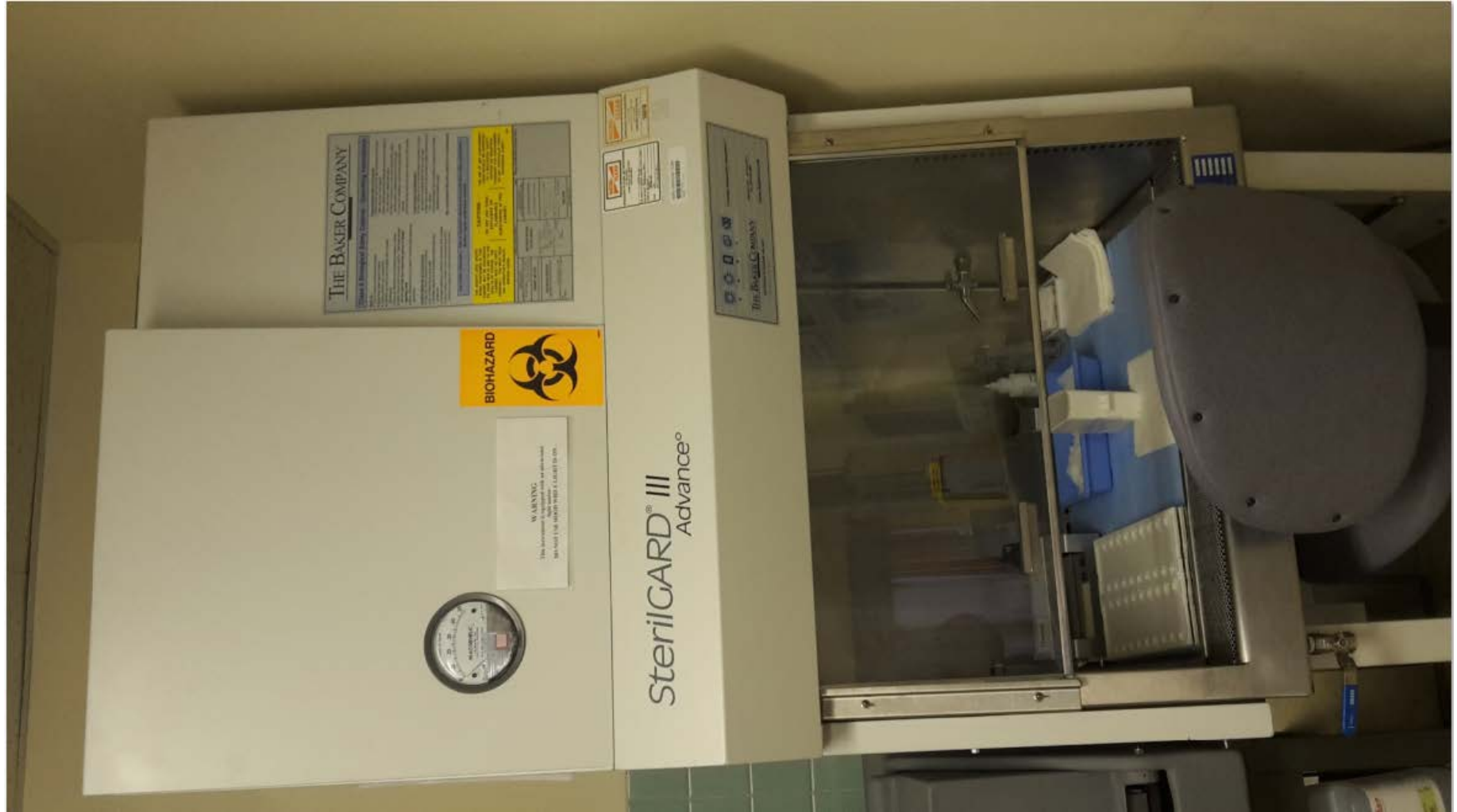
8.00 (30) ft/min (8.00 - 8.30 m/s)

30 - 40 FPM (8.25 - 9.30 m/s)

**Plan View**  
Measure velocities in horizontal plane level with bottom edge of grill

NI-97B2

**STATEMENT OF WORK FOR PHARMACY CLEAN ROOM AND HOOD MONITORING AND CERTIFICATION  
WILKES-BARRE VETERANS AFFAIRS MEDICAL CENTER (Photographs).**



NI-97B3

**STATEMENT OF WORK FOR PHARMACY CLEAN ROOM AND HOOD MONITORING AND CERTIFICATION  
WILKES-BARRE VETERANS AFFAIRS MEDICAL CENTER (Photographs).**



N3-111



# STATEMENT OF WORK FOR PHARMACY CLEAN ROOM AND HOOD MONITORING AND CERTIFICATION WILKES-BARRE VETERANS AFFAIRS MEDICAL CENTER (Photographs).



## THE BAKER COMPANY

### Class II Biological Safety Cabinet - Operating Instructions

#### Start Up:

- Turn on blower and fluorescent lights.
- Make sure drain valve is closed.
- Check grills for any obstructions.
- Disinfect all interior work surfaces with a suitable disinfectant.
- Place all materials and equipment needed in cabinet.
- Adjust viewscreen to proper position. This hood should not be used with the viewscreen above the design opening mark.
- Allow cabinet to run for at least 3 minutes before beginning procedure.

#### Loading Materials and Equipment:

- Load only items needed for procedure.
- Do not block front or rear grills.
- Disinfect exterior of all containers before beginning procedure.
- Arrange materials to minimize movement within cabinet.
- Once cabinet is loaded, lower viewscreen and wait 3 minutes to purge any contaminants from work area.

#### Recommended Work Techniques:

- Wash hands and arms with germicidal soap before and after working in the cabinet.
- Wear proper garments (sterile gloves and lab coat/gown) and use proper aseptic technique.
- Perform all work on or over solid work surface, avoid working over or placing items on the front grill.
- To reduce turbulence, avoid rapid movements while working.
- Avoid moving hands and arms in and out of the cabinet.

#### Final Purging and Wipedown:

- Allow cabinet to run 3 minutes before unloading to purge any airborne contaminants from the work area.
- Wipe down exterior of all containers before removing them from cabinet.
- Decontaminate interior surfaces of cabinet with suitable disinfectant/cleaning agent.

*We recommend that the cabinet run continuously.*

**For further information: Refer to Operator's Manual and consult your safety professional.  
Maintain regular certification schedule.**

### -- CAUTIONS --

THE AGENTS USED AND/OR WORK PERFORMED IN THIS CABINET MAY BE HAZARDOUS TO YOUR HEALTH AND TO THE HEALTH OF OTHERS. THE CABINET MUST BE USED PROPERLY. YOU MUST READ THE OPERATOR'S MANUAL BEFORE USING.

THE USE OF ANY CONTAMINANT HOOD SHOULD BE APPROVED BY A BIOLOGICAL SAFETY OFFICER OR INDUSTRIAL HYGIENIST FOR CONTAINMENT OF ANY PARTICULAR VIABLE HAZARDOUS AGENT.

SG403 - CLASS II TYPE A/B3

INTAKE VELOCITY - RANGE 100 TO 150 FPM

PRIMAIRY METHOD

SECONDARY METHOD

Seal direct reading instrument

to front access opening

8" each = 258 to 282 CFM

10" each = 319 to 351 CFM

DOWNFLOW VELOCITY

TAKEN IN EACH PLANE, REMOVE IV • UN

10" UNIFORM FLOW • 58

8" ZONE FLOW

47

56

63

PLAN VIEW

1st TYP

1st TYP

Turning Location

Point of Entry

2" TYP

2" TYP

Probe

Operations

PLAN VIEW



SPECIALISTS IN CLEAN AIR CERTIFICATION

P.O. BOX 21808

LEHIGH VALLEY PA 18003-1808

1-800-553-9553

DATE TESTED: 01 FEB 2014

REF REPORT NO: 02017-03-14-0181-1137

CABINETS TESTED: 64

TESTED BY: S. G. G. G.

OTHER: M/S

DATE: 01 FEB 2014



**STATEMENT OF WORK FOR PHARMACY CLEAN ROOM AND HOOD MONITORING AND CERTIFICATION  
WILKES-BARRE VETERANS AFFAIRS MEDICAL CENTER (Photographs).**



N3-111\_2