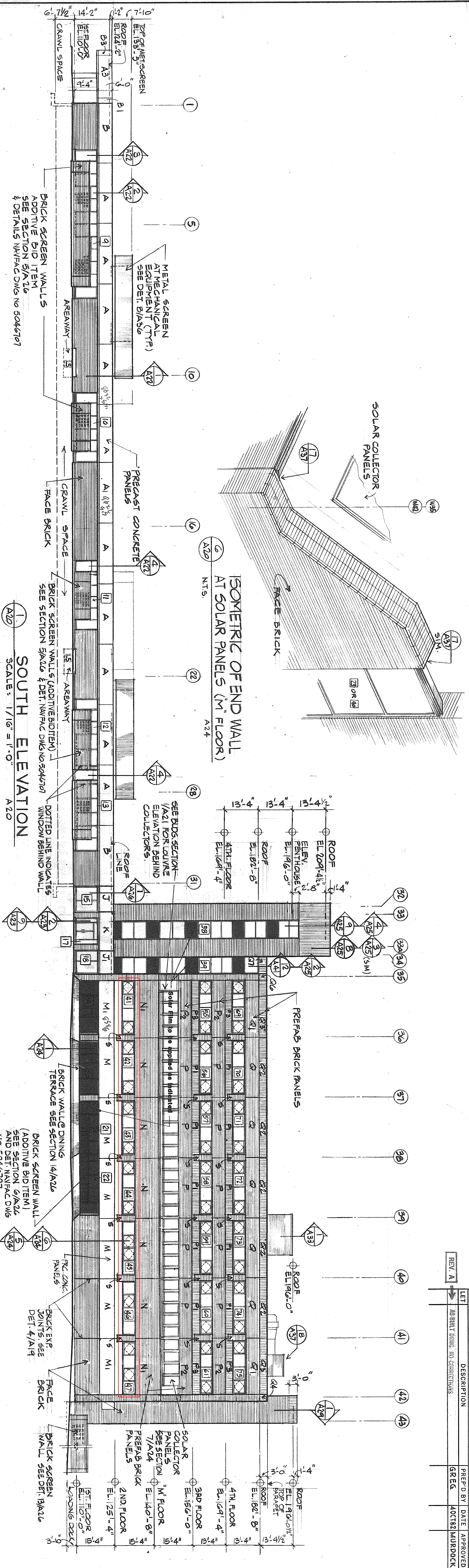
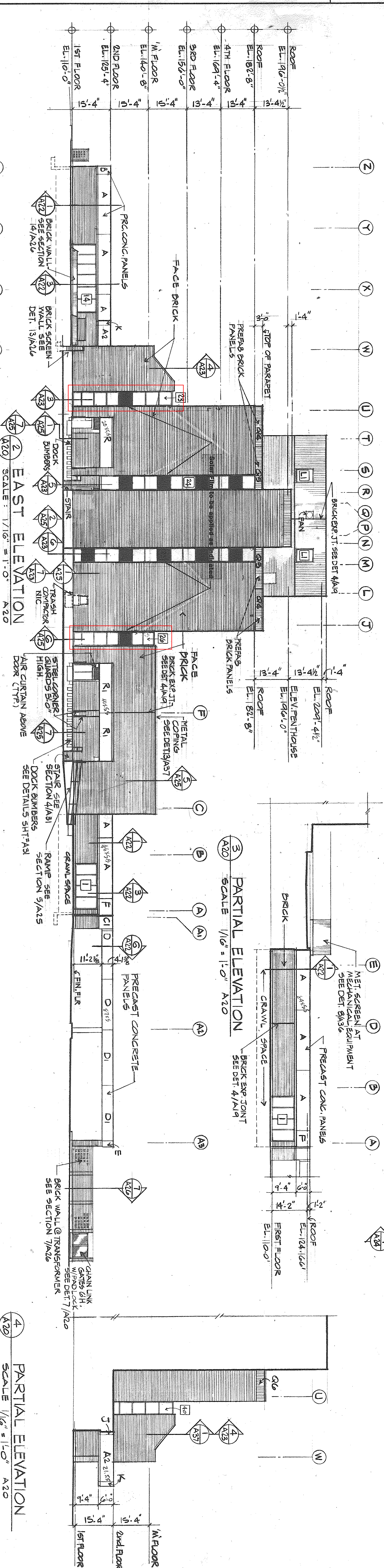


REVISIONS			
REV.	DATE	DESCRIPTION	APPROVED
1		AS SHOWN	



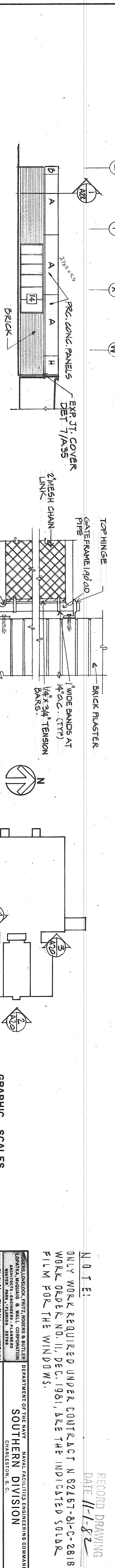
ISOMETRIC OF END WALL
AT SOLAR PANELS (1ST FLOOR)

SCALE: 1/16" = 1'-0"



SOUTH ELEVATION

SCALE: 1/16" = 1'-0"



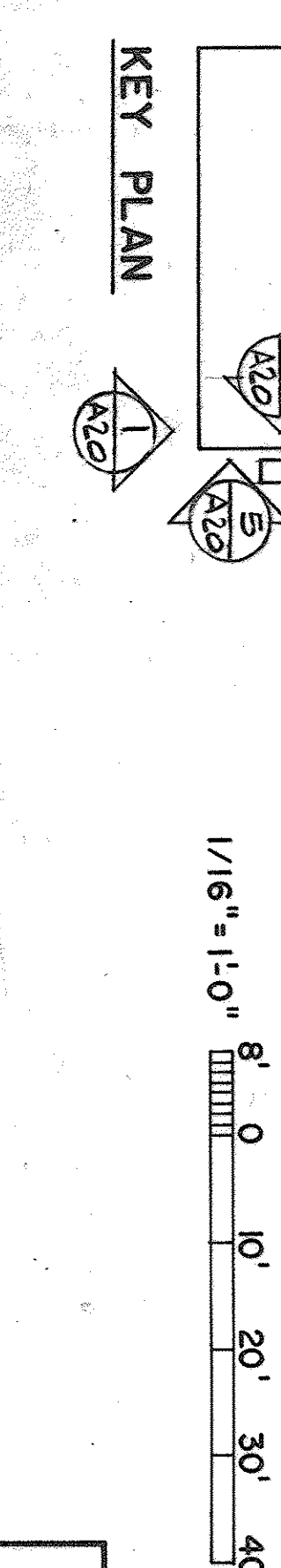
EAST ELEVATION

SCALE: 1/16" = 1'-0"



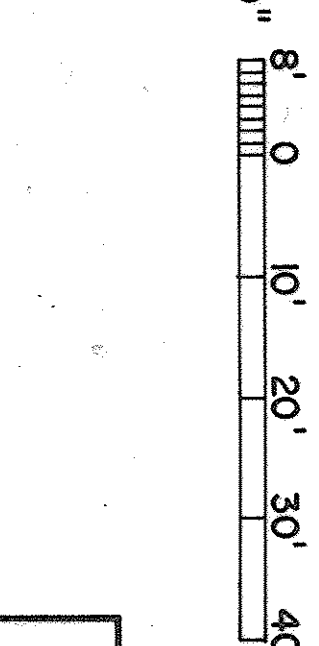
PARTIAL ELEVATION

SCALE: 1/16" = 1'-0"



KEY PLAN

SCALE: 1/16" = 1'-0"



GRAPHIC SCALES

1/16" = 1'-0"

A20	
DATE	11-1-82
DESIGNED BY	80091
CHECKED BY	5046701
APPROVED BY	
SCALE	AS SHOWN

NOTES:
ONLY WORK REQUIRED UNDER CONTRACT N 62467-81-C-2618
WORK ORDER NO. 11, DEC. 1981, ARE THE INDICATED SOLID
FILM FOR THE WINDOWS.

RECORD DRAWING
DATE 11-1-82

DEPARTMENT OF THE NAVY
NAVAL FACILITIES ENGINEERING COMMAND
SOUTHERN DIVISION
ORLANDO, FLORIDA
HOSPITAL REPLACEMENT
EXTERIOR ELEVATIONS SHEET 2 OF 2
CONTRACT NO. N62467-81-C-2618
SPEC. 06-75-0340 SHEET 110 OF 110