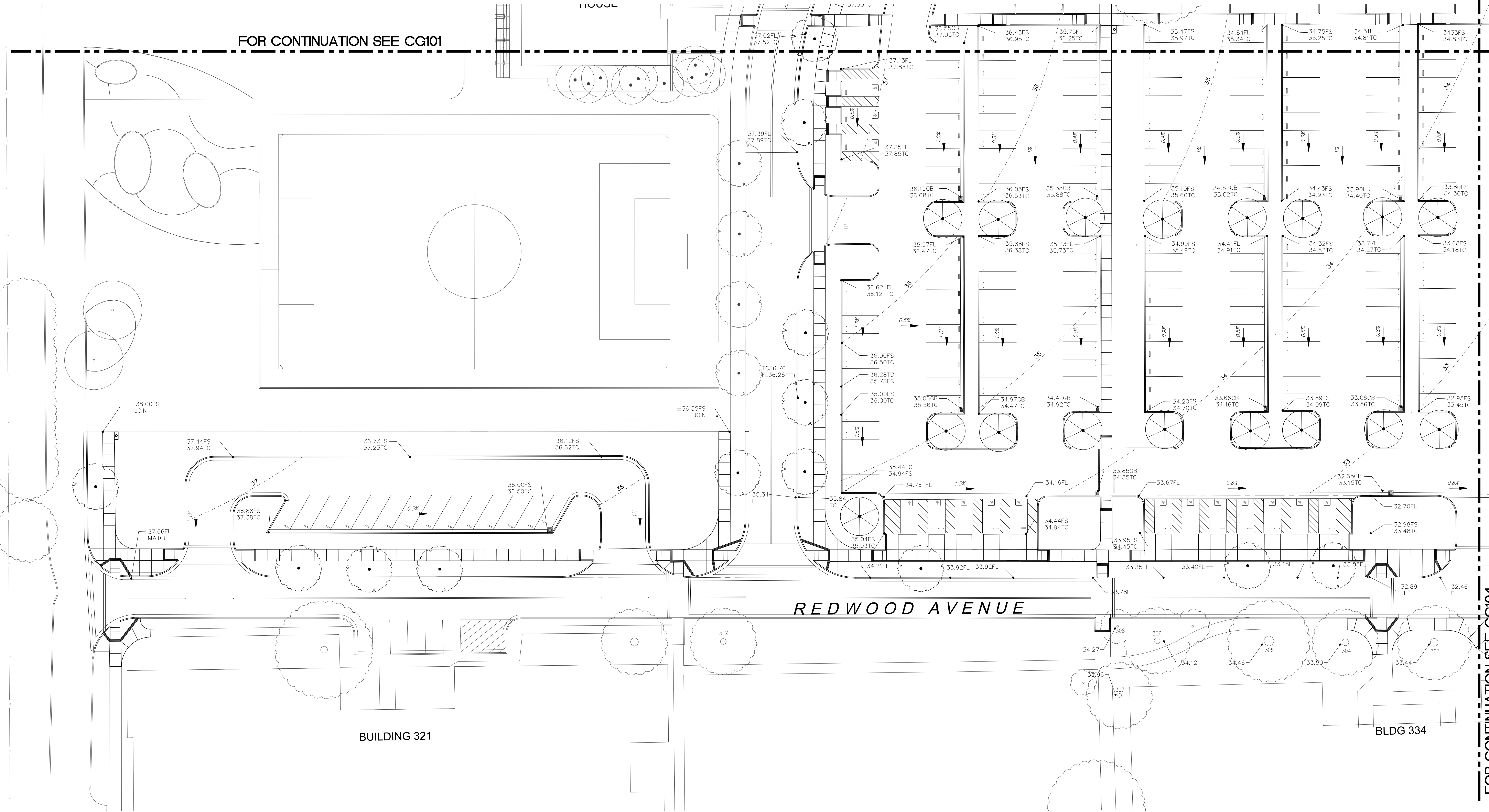


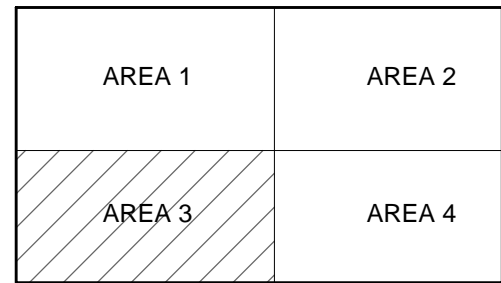
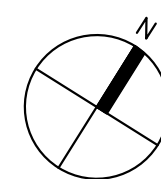
one eighth inch = one foot
one quarter inch = one foot
one half inch = one foot
three eighths inch = one foot
one inch = one foot
one and one half inches = one foot
two inches = one foot
three inches = one foot



SHEET NOTES




1. ALL CONFORM GRADES ARE BASED ON TOPOGRAPHIC SURVEY. CONTRACTOR SHALL VERIFY CONFORM ELEVATIONS PRIOR TO CONSTRUCTION & NOTIFY COR OF ANY DISCREPANCY.
2. SEE SHEET LT200 FOR TREE PROTECTION AND DEMOLITION

1 GRADING AND DRAINAGE PLAN AREA 3
1" = 20'-0"



KEY PLAN

100% CONSTRUCTION DOCUMENTS-NOT FOR CONSTRUCTION

CONSULTANTS:  CARDUCCI & ASSOCIATES, INC. LANDSCAPE ARCHITECTURE PLANNING IRRIGATION DESIGN URBAN DESIGN 555 BEACH STREET, 4TH FLOOR SAN FRANCISCO, CALIFORNIA 94133 PHONE (415) 674-0990 FAX (415) 674-0999 © 2015 CARDUCCI & ASSOCIATES, INC.		ARCHITECT/ENGINEERS:  KPA THE KPA GROUP ENGINEERS ARCHITECTS ONE KAISER PLAZA SUITE 445 OAKLAND CALIFORNIA 94612 TEL 510.271.6701 FAX 510.271.6707 ©THE KPA GROUP 2015 KPA Project No. 593.00		Drawing Title GRADING AND DRAINAGE PLAN AREA 3 Approved Project Director - VAPAHCS PLANNING AND ENGINEERING		Project Title UPGRADE CAMPUS PARKING/CIRCULATION Location VAPAHCS, MPD MENLO PARK, CA Date 04/17/2015 Checked PWP Drawn KPA TEAM		Project Number 640AO-15-102 Building Number - Drawing Number CG103 Dwg. of -		Office of Construction and Facilities Management  VAPAHCS Veterans Affairs Palo Alto Health Care System	
--	--	--	--	--	--	--	--	---	--	--	--