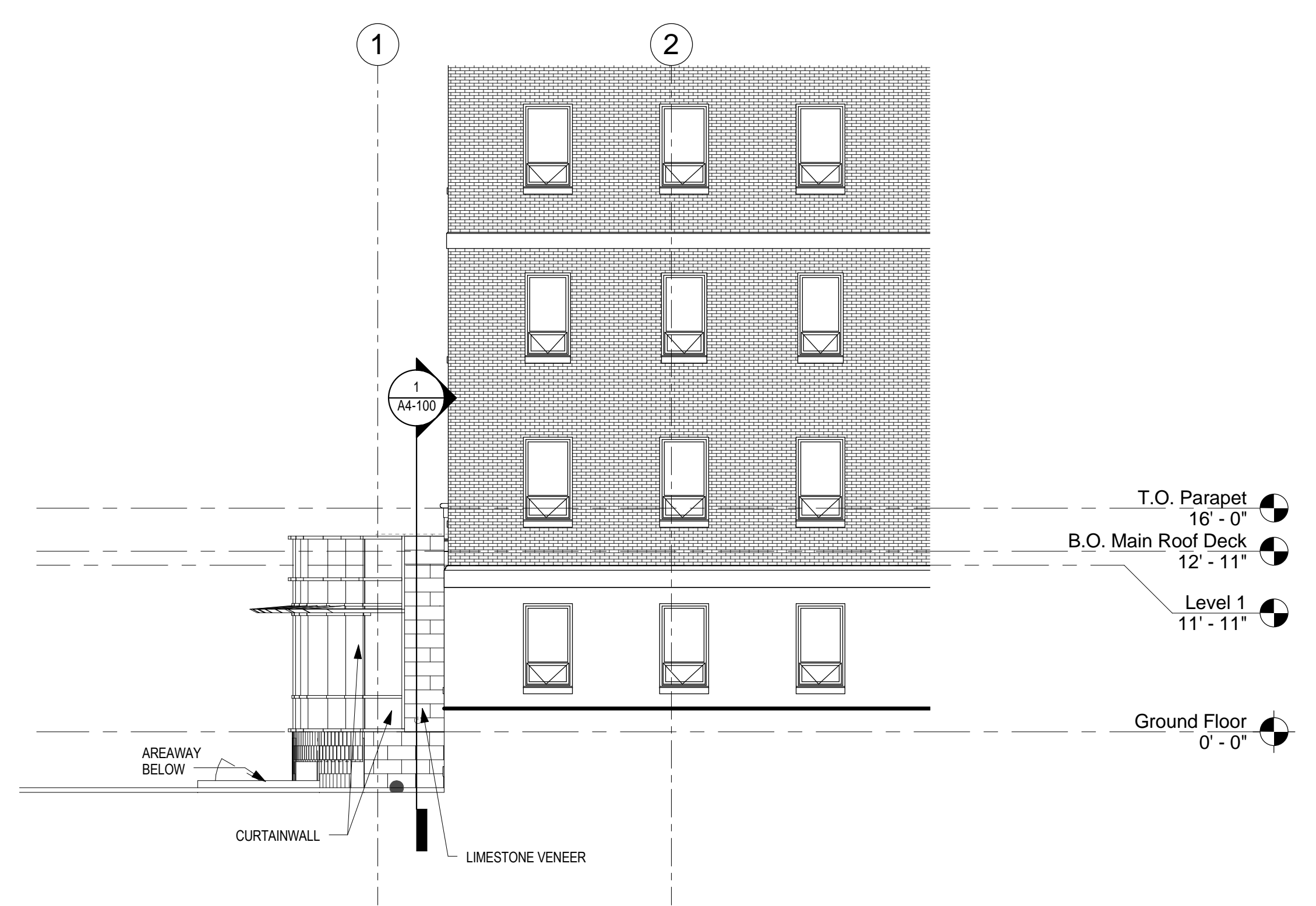
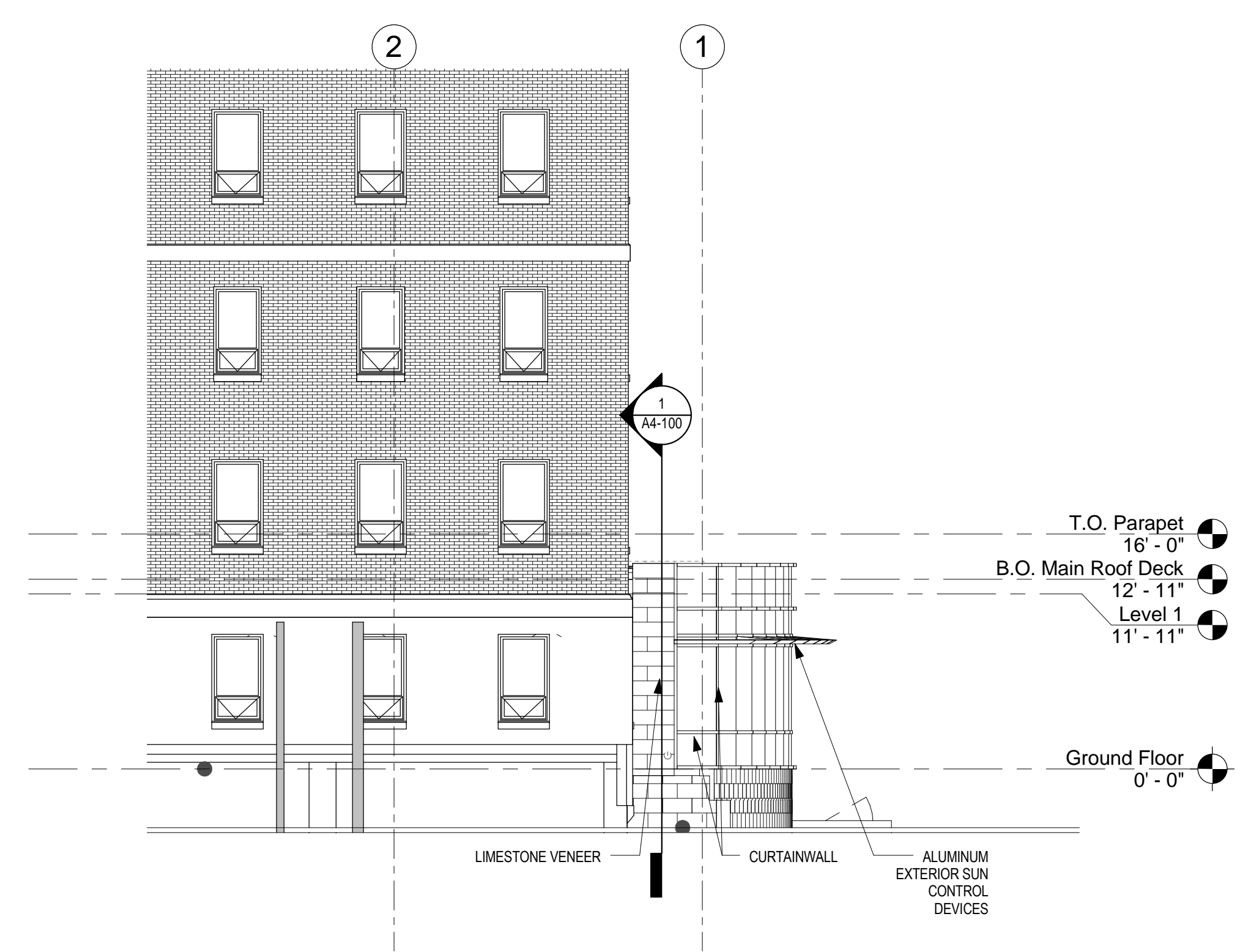


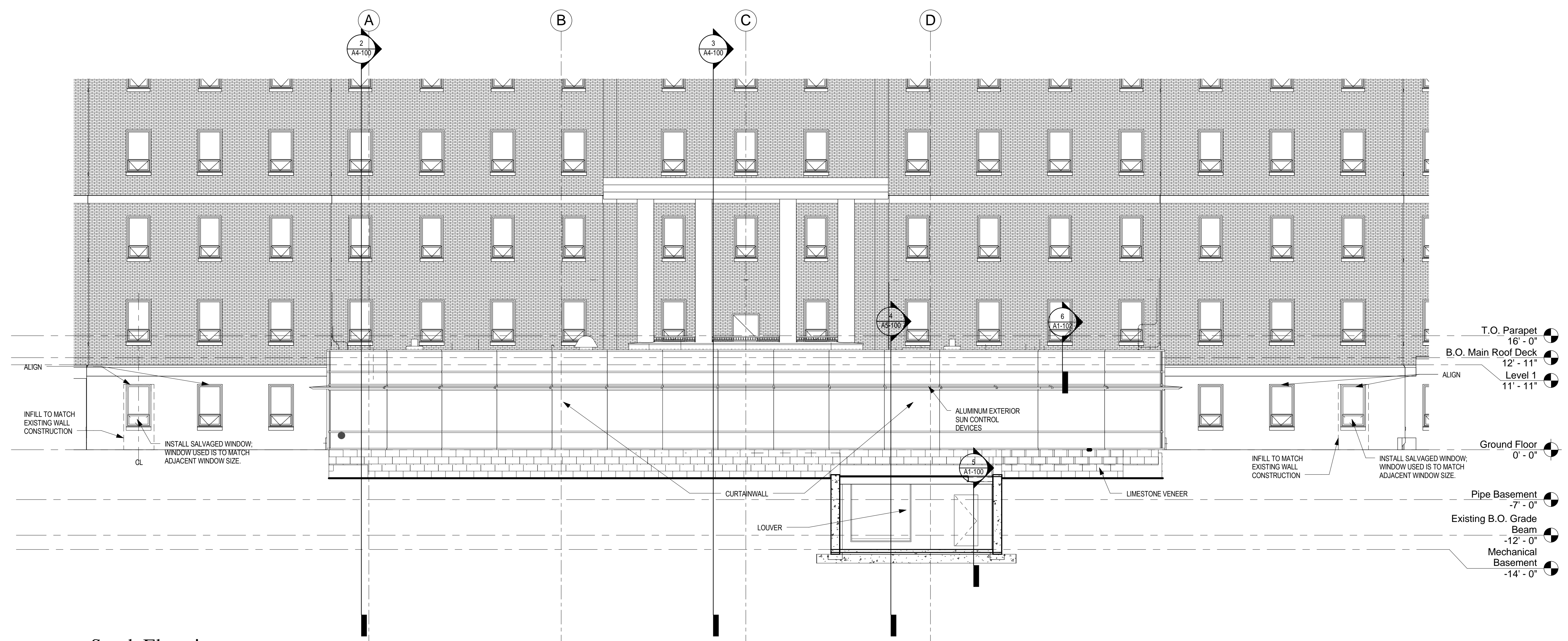
three inches = one foot
 one and one half inches = one foot
 one inch = one foot
 three quarters inch = one foot
 one half inch = one foot
 three eighths inch = one foot
 one quarter inch = one foot
 one eighth inch = one foot



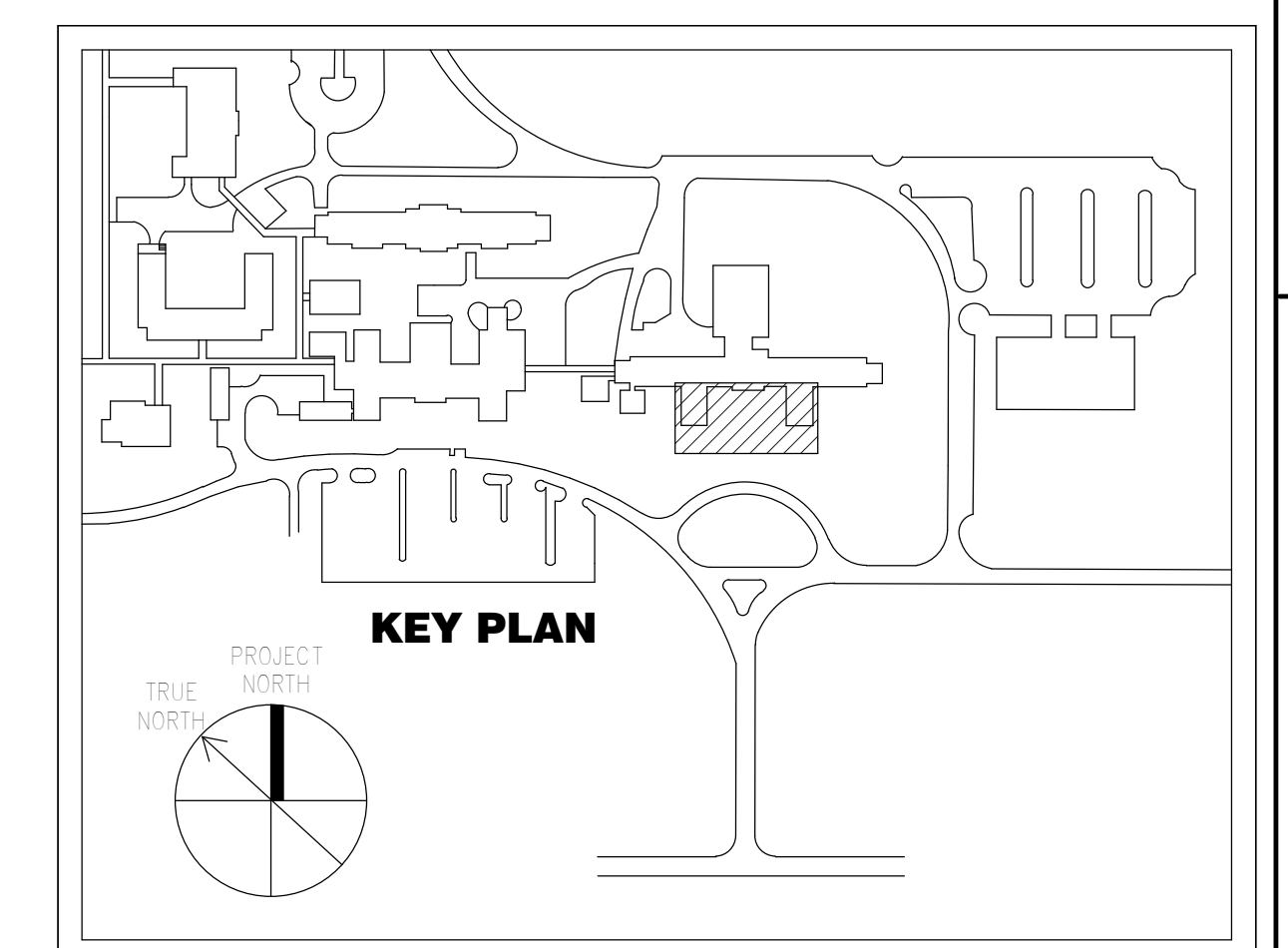
1 East Elevation
1/8" = 1'-0"



2 West Elevation
1/8" = 1'-0"



3 South Elevation
1/8" = 1'-0"

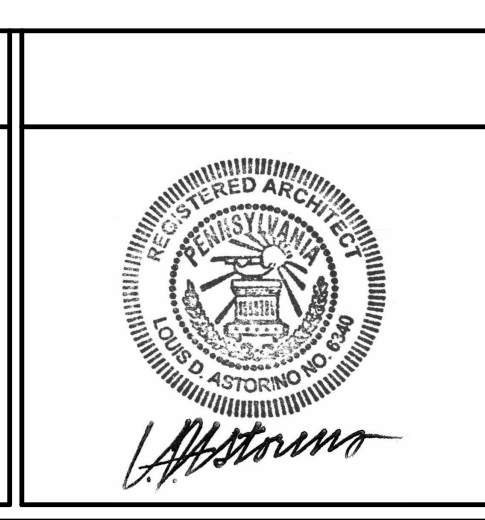


CONSTRUCTION DOCUMENT SUBMISSION

FULLY SPRINKLERED

Number	Description	Date
Revision Schedule		

CONSULTANTS:



ARCHITECT/ENGINEERS:

ARCHITECTURE
ENGINEERING
INTERIOR DESIGN
DESIGN/BUILD

ASTORINO

227 First Pine Boulevard Pittsburgh, Pennsylvania 15222
TEL: 412 765 1300 FAX: 412 765 1311 WWW.ASTORINO.COM

Drawing Title
Building Elevations

Approved: Project Director

Project Title VAMC Lebanon - Renovation of Laboratory B1		Project Number 595-09-107
Location Lebanon, PA		Drawing Number A3-100
Date 02/23/2012	Checked AB	Drawn BY
Dwg. of		

Office of Facilities Management

Department of Veterans Affairs