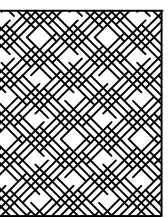
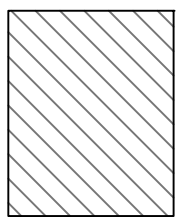
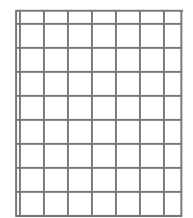


ASBESTOS ABATEMENT LEGEND – CORE

NOTE: ALL QUANTITIES LISTED ARE APPROXIMATE.

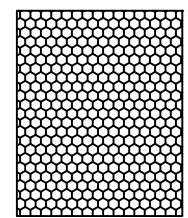
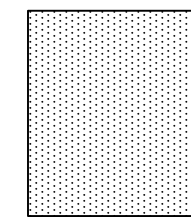


ABATEMENT CONTRACTOR SHALL REMOVE AND DISPOSE OF ALL LAYERS OF EXISTING FLOOR TILE & MASTIC TO TOP OF STRUCTURAL SLAB AS ASBESTOS CONTAINING MATERIAL. ABATEMENT SHALL BE PERFORMED SUCH THAT ALL ASBESTOS CONTAINING MATERIALS SHALL BE COMPLETELY REMOVED FROM THE SUBSTRATE. RE: SPEC SECTION 02-82-13.19. TYP. FOR +/-2,200 SQ. FT.

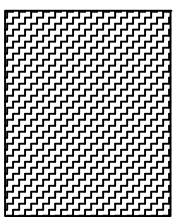
ABATEMENT CONTRACTOR SHALL REMOVE AND DISPOSE OF EXISTING SHEET VINYL / LINOLEUM FLOOR COVERINGS AND UNDERLAYMENTS & MASTICS AS ASBESTOS CONTAINING MATERIAL. ABATEMENT SHALL BE PERFORMED SUCH THAT ALL ASBESTOS CONTAINING MATERIALS SHALL BE COMPLETELY REMOVED FROM THE SUBSTRATE. RE: SPEC SECTION 02-82-13.19 TYP. FOR +/-200 SQ. FT.

ABATEMENT CONTRACTOR SHALL REMOVE CASWORK, DECONTAMINATE OF ASBESTOS CONTAINING MATERIAL AND DISPOSE OF AS GENERAL CONSTRUCTION DEBRIS. RE: SPEC SECTION 02-82-13. TYP. FOR +/-12 LIN. FT.

ABATEMENT CONTRACTOR SHALL REMOVE EXISTING HEATER. REMOVE AIRCELL INSULATION SHEET & DECONTAMINATE UNIT. ABATEMENT CONTRACTOR SHALL ALSO REMOVE ASBESTOS CONTAINING PIPE / FITTING INSULATION ON RADIATOR SUPPLY & RETURN PIPING / FITTINGS. AIRCELL INSULATION SHEET SHALL BE DISPOSED OF AS ASBESTOS CONTAINING MATERIAL. DEBRIS TO BE DISPOSED OF AS GENERAL CONSTRUCTION DEBRIS ONCE DECONTAMINATED. RE: SPEC SECTION 02-82-11. TYP. FOR 8 UNITS / +/-100 SQ. FT. OF AIRCELL INSULATION & +/- 120 LIN. FT. OF PIPE / FITTING INSULATION.



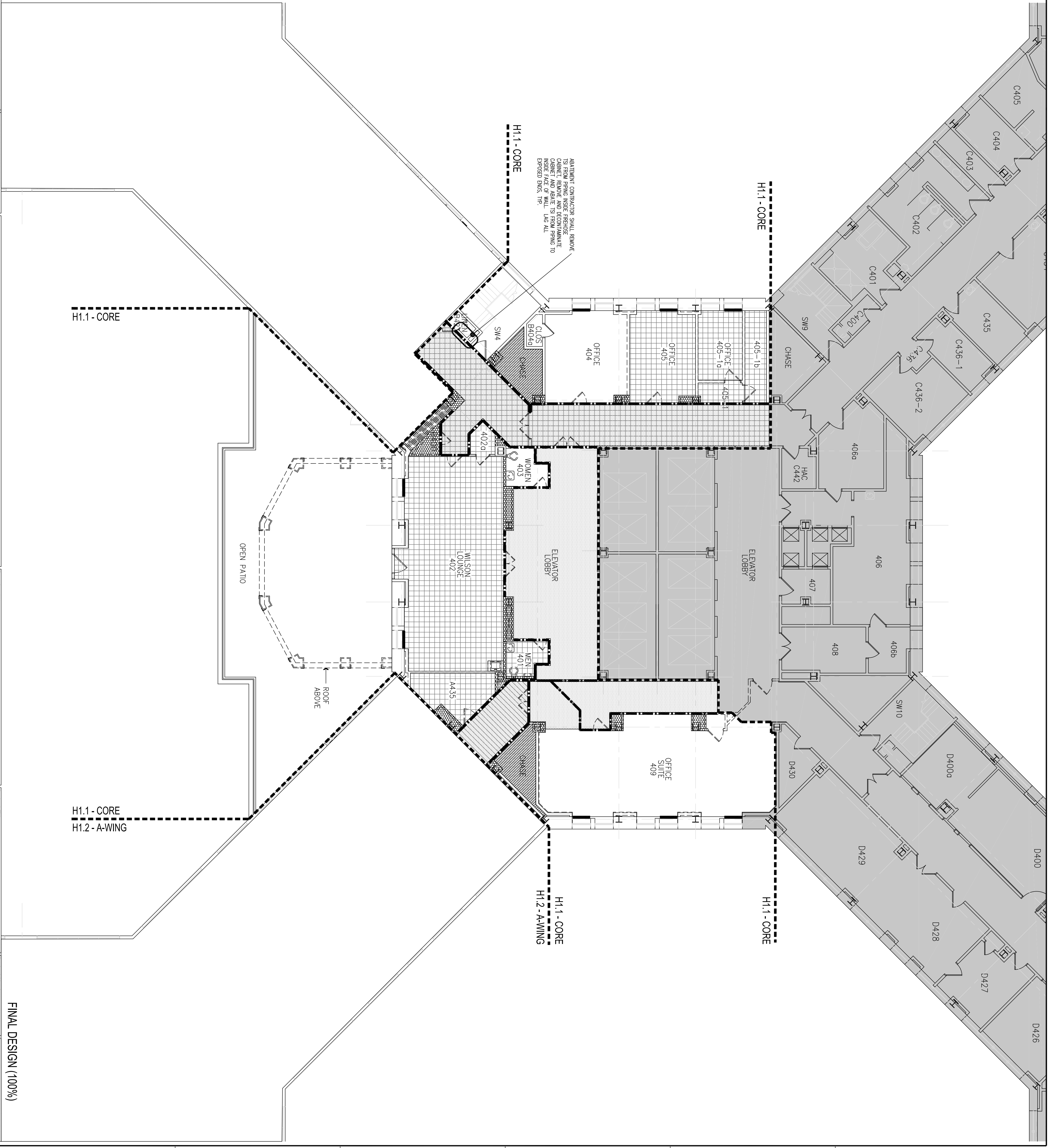
ABATEMENT CONTRACTOR SHALL REMOVE AND DISPOSE OF CEILINGS AS ASBESTOS CONTAINING MATERIAL AND REMOVE AND DISPOSE OF WALL PIPE INSULATION ABOVE CEILINGS. RE: SPEC SECTION 02-82-11. TYP. FOR +/-1,680 SQ. FT. (SEE BELOW FOR TOTAL QUANTITY OF PIPE/FITTING INSULATION REMOVAL.)



ABATEMENT CONTRACTOR SHALL DEMOLISH CHASE WALL AND REMOVE AND DISPOSE OF WALL MATERIAL AND ASBESTOS CONTAINING PIPE & FITTING INSULATION AS ASBESTOS CONTAINING MATERIAL. RE: SPEC SECTION 02-82-11. TYP. FOR +/- 2,300 SQ. FT. OF WALL REMOVAL & +/- 690 LIN. FT. PIPE & FITTING INSULATION – QTY. INCLUDES PIPES ABOVE CEILINGS

ABATEMENT CONTRACTOR SHALL REMOVE AND DISPOSE OF ALL DOORS BETWEEN CORRIDORS AND ADJACENT SPACES AS ASBESTOS CONTAINING MATERIAL. TYP. FOR 20 DOOR LEAVES.

ABATEMENT CONTRACTOR SHALL REMOVE EXISTING CASWORK, DECONTAMINATE CASING, REMOVE AND DECONTAMINATE CASING, AND ABATE TO FROM PIPING TO EXPOSED BUNS. TYP.



FINAL DESIGN (100%)

CONSULTANTS:		ARCHITECT/ENGINEERS:		Drawing Title		Project Title		Office of Construction and Facilities Management	
Hymon & Hayes		Sigma Psi Consulting		4TH FLOOR ASBESTOS ABATEMENT PLAN CORE		Renovate 4A for Community Living Center (CLO) Stratton VA Medical Center		Building Number 1	
H1.1 / H1.2 RENOV		Mechanical, Electrical, Plumbing Engineers, PLLC		Date 10/27/14		Location Albany, New York		Drawing Number H1.1	
H1.2 RENOV		4 Collamer Road, Malin, NY 12020		Checked		Drawn		Dwg. 4 of 17	
H1.1 RENOV		PH: (518) 581-9428		Drawn		Drawn			
100% SUBMISSION		FX: (518) 580-9325		Drawn		Drawn			
Date				Drawn		Drawn			