

ASBESTOS ABATEMENT LEGEND –A WING

NOTE: ALL QUANTITIES LISTED ARE APPROXIMATE.

ABATEMENT CONTRACTOR SHALL REMOVE AND DISPOSE OF ALL LAYERS OF EXISTING FLOOR TILE & MASTIC TO TOP OF STRUCTURAL SLAB AS ASBESTOS CONTAINING MATERIAL. ABATEMENT SHALL BE PERFORMED SUCH THAT ALL ASBESTOS CONTAINING MATERIALS SHALL BE COMPLETELY REMOVED FROM THE SUBSTRATE. RE: SPEC SECTION 02-82-13.19. TYP. FOR +/-500 SQ. FT.

ABATEMENT CONTRACTOR SHALL REMOVE AND DISPOSE OF EXISTING SHEET VINYL / LINOLEUM FLOOR COVERINGS AND UNDERLAYMENTS & MASTICS AS ASBESTOS CONTAINING MATERIAL. ABATEMENT SHALL BE PERFORMED SUCH THAT ALL ASBESTOS CONTAINING MATERIALS SHALL BE COMPLETELY REMOVED FROM THE SUBSTRATE. RE: SPEC SECTION 02-82-13.19 TYP. FOR +/-2,400 SQ. FT.

ABATEMENT CONTRACTOR SHALL REMOVE AND DISPOSE OF EXISTING CARPETING AND ALL LAYERS OF FLOOR TILE & MASTIC TO TOP OF STRUCTURAL SLAB AS ASBESTOS CONTAINING MATERIAL. ABATEMENT SHALL BE PERFORMED SUCH THAT ALL ASBESTOS CONTAINING MATERIALS SHALL BE COMPLETELY REMOVED FROM THE SUBSTRATE. RE: SPEC SECTION 02-82-13.19. TYP. FOR +/-6,000 SQ. FT.

ABATEMENT CONTRACTOR SHALL REMOVE CASEWORK, DECONTAMINATE OF ALL ASBESTOS CONTAINING MATERIAL AND DISPOSE OF AS GENERAL CONSTRUCTION DEBRIS. RE: SPEC SECTION 02-82-13. TYP. FOR +/-8 LIN. FT.

ABATEMENT CONTRACTOR SHALL REMOVE EXISTING HEATER, REMOVE AIRCELL INSULATION SHEET & DECONTAMINATE UNIT. ABATEMENT CONTRACTOR SHALL ALSO REMOVE ASBESTOS CONTAINING PIPE / FITTING INSULATION ON RADIATOR SUPPLY & RETURN PIPING / FITTINGS. AIRCELL INSULATION SHEET SHALL BE DISPOSED OF AS ASBESTOS CONTAINING MATERIAL. DEBRIS SHALL BE DISPOSED OF AS GENERAL CONSTRUCTION DEBRIS ONCE DECONTAMINATED. RE: SPEC SECTION 02 82 11.1. TYP. FOR 50 UNITS / +/-500 SQ. FT. OF AIRCELL INSULATION & +/-750 LIN. FT. OF PIPE / FITTING INSULATION.

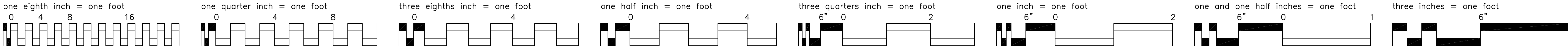
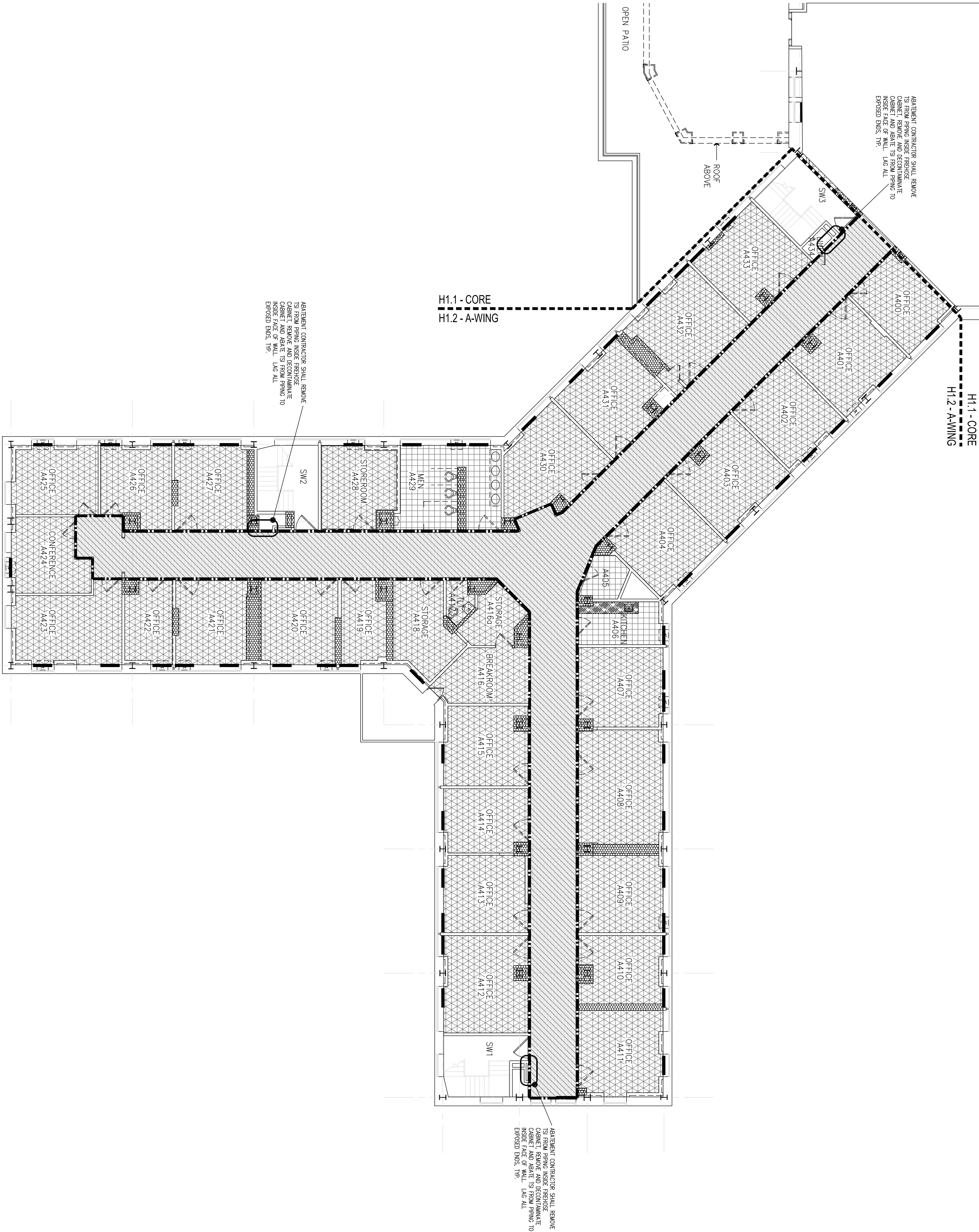
ABATEMENT CONTRACTOR SHALL REMOVE TOP 12" OF EXISTING WALLS AND ALL RESIDUAL EDGE CEILING PLASTER AS ASBESTOS CONTAINING MATERIAL. RE: SPEC SECTION 02 82 11.1. TYP. FOR +/-675 SQ. FT. WALL & PLASTER REMOVAL

ABATEMENT CONTRACTOR SHALL REMOVE AND DISPOSE OF CEILINGS AS ASBESTOS CONTAINING MATERIAL AND REMOVE AND DISPOSE OF ALL PIPE INSULATION ABOVE CEILINGS. RE: SPEC SECTION 02 82 11.1. TYP. FOR +/-2,100 SQ. FT. (SEE BELOW FOR TOTAL QUANTITY OF PIPE/FITTING INSULATION REMOVAL.)

ABATEMENT CONTRACTOR SHALL DEMOLISH CHASE WALL AND REMOVE AND DISPOSE OF WALL MATERIAL AND ASBESTOS CONTAINING PIPE & FITTING INSULATION AS ASBESTOS CONTAINING MATERIAL. RE: SPEC SECTION 02 82 11.1. TYP. FOR +/-2,170 SQ. FT. OF WALL REMOVAL & +/-2,400 LIN. FT. PIPE & FITTING INSULATION – QTY. INCLUDES PIPES ABOVE CEILINGS

ABATEMENT CONTRACTOR SHALL REMOVE AND DISPOSE OF ALL DOORS BETWEEN CORRIDORS AND ADJACENT SPACES AS ASBESTOS CONTAINING MATERIAL. TYP. FOR 37 DOORS LEAVES.

NOTE: WHEREVER ASBESTOS CONTAINING PIPE INSULATION IS BEING ABATED AND PENETRATES FLOORS, THE CONTRACTOR SHALL IN REMOVE INSULATION FROM PENETRATION IF THE FLOOR ABOVE OR BELOW HAS BEEN PREVIOUSLY ABATED. IN ALL LOCATIONS, ALL EXPOSED ENDS OF ALL ASBESTOS CONTAINING THERMAL SYSTEMS INSULATIONS SHALL BE LAGGED AND PROTECTED.



H1.1 / H1.2 REISED	02/11/15
H1.2 REISED	02/23/15
H1.1 REISED	02/24/15
100% SUBMISSION	10/22/14
Revised	Date

CONSULTANTS:

Hyman

Hoyes

6 WEARLEY COURT, ALBANY, NEW YORK 12204  
(518) 485-3470

HA Proj.

12035

Adelaide

Environmental Health Associates, Inc.  
1511 Route 22, Suite C24  
Brewster, New York 10809  
p: 845.278.7710 f: 845.278.7750  
adelaidelic.com

Environmental Consultants

ARCHITECT/ENGINEERS:

Sigma Psi Consulting

Mechanical, Electrical, Plumbing Engineers, PLLC

4 Collamer Road, Malin, NY 12001 PH: (518) 581-9428 FX: (518) 580-9325

Drawing Title

4TH FLOOR  
ASBESTOS ABATEMENT PLAN  
WING A

Project Title

Renovate 4A for Community Living Center (CLO)  
Stratton VA Medical Center

Project Number

VA 528A8-12-801

Building Number

1

Office of Construction and Facilities Management

Department of Veterans Affairs

Approved Project Director

Location

Albany, New York

Date

10-22-2014

Checked

Drawn

ABH

Dwg. Number

H1.2

Dwg. 5 of 17