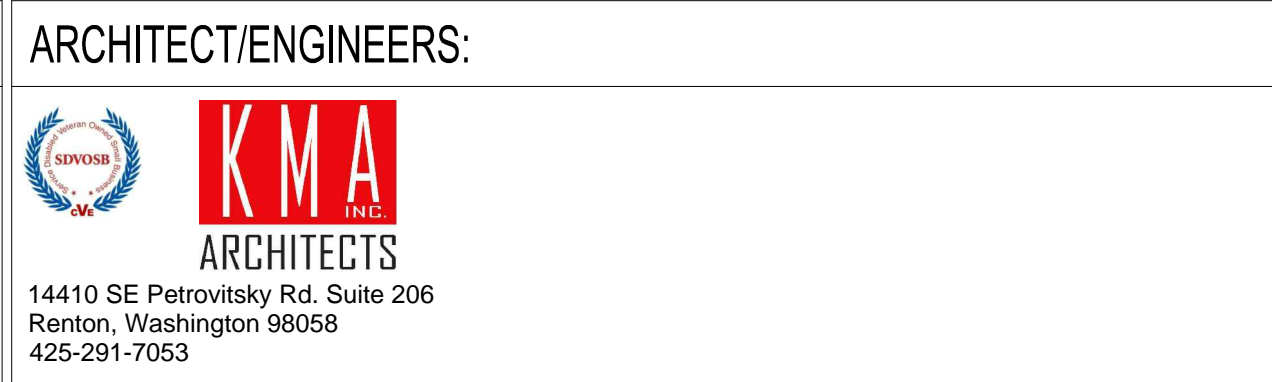


CONSULTANTS:	

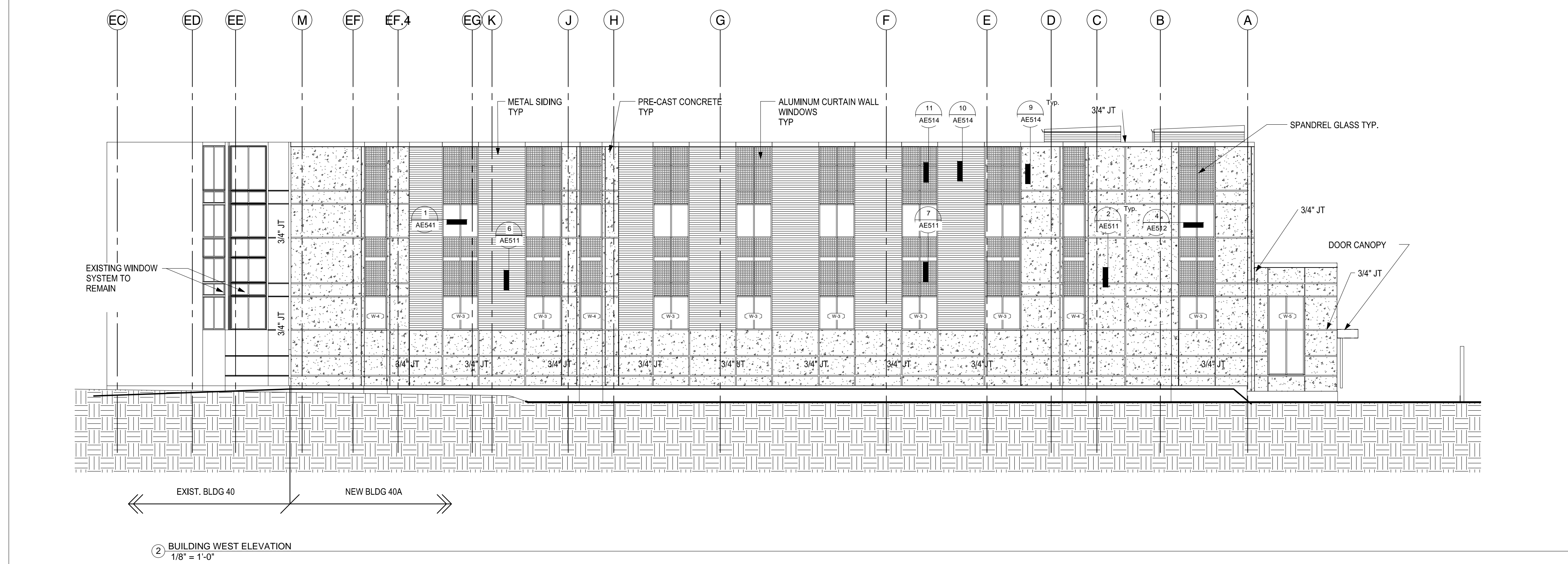
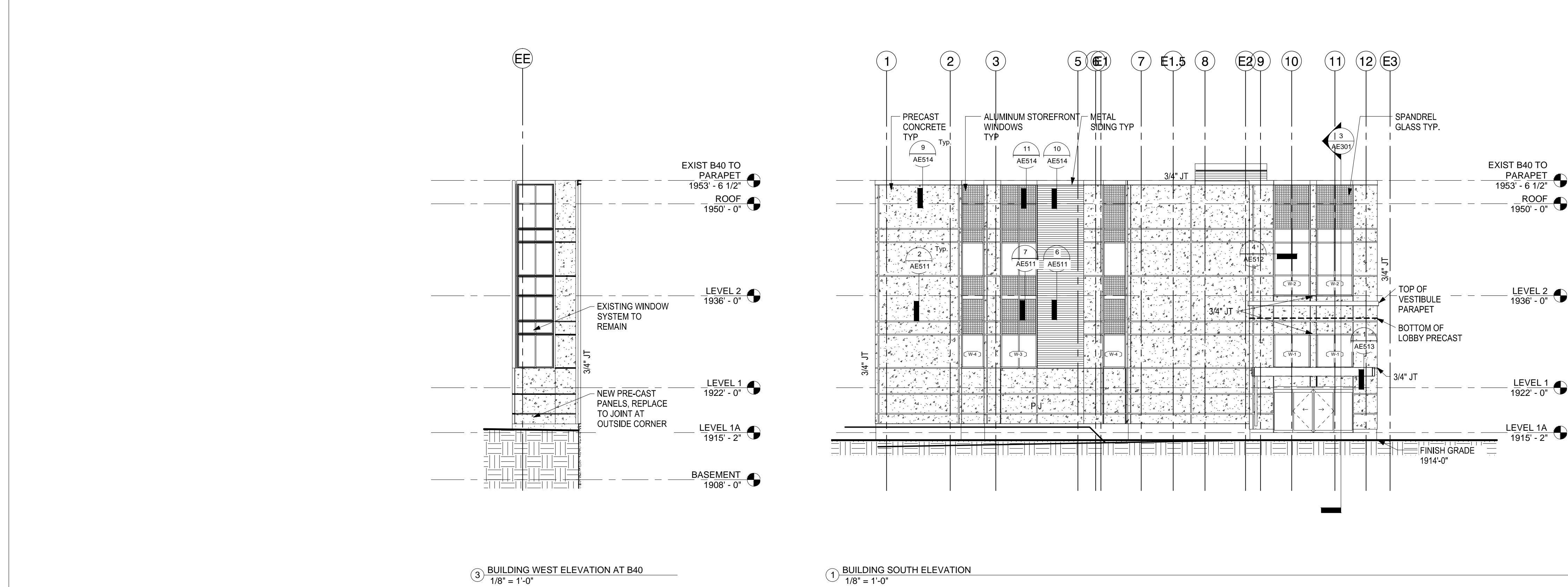


**BID DOCUMENT
NOVEMBER/02/2015**

Office of
Construction
and Facilities
Management

 Department of
Veterans Affairs

three inches = one foot
one and one half inches = one foot
one inch = one foot
three quarters inch = one foot
one half inch = one foot
three eighths inch = one foot
one quarter inch = one foot
one eighth inch = one foot



	ADDENDUM 004	02/17/2016
	BID DOCUMENT	11/02/2015
	100% CONSTRUCTION DOCUMENT	1/26/2015
		12/30/14
	99% CONSTRUCTION DOCUMENT	12/17/14
	95% CONSTRUCTION DOCUMENT	10/13/14
	65% DESIGN DEVELOPMENT	6/27/14
	SCHEMATIC DESIGN	03/28/14
Revisions	Issues	Date

CONSULTANTS:



ARCHITECT/ENGINEERS:



Drawing Title
EXTERIOR BUILDING ELEVATIONS

Approved: Project Director
Approver

Project Title
INTENSIVE OUTPATIENT MENTAL HEALTH AND EDUCATION BUILDING
4815 NORTH ASSEMBLY ST.
SPOKANE, WASHINGTON 99205

Location
SPOKANE, WASHINGTON 99205
Issue Date
11/2/2015

Project Number
668-313
Building Number
40A
Drawing Number
AE202
Dwg. of

Office of
Construction
and Facilities
Management
Department of
Veterans Affairs

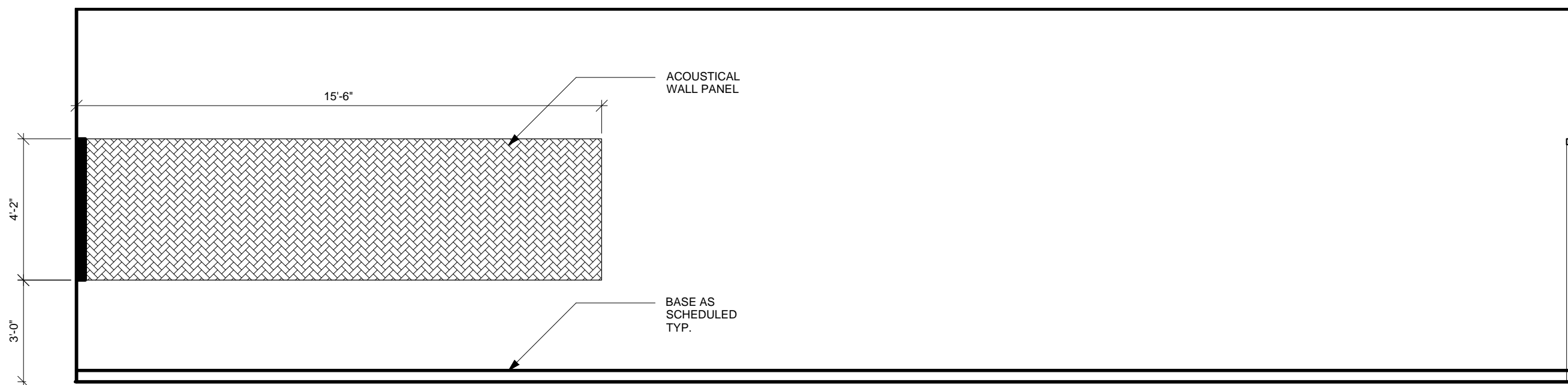
GENERAL SHEET NOTES:

- ALL GLASS IS TO BE IG-1 UNLESS NOTED OTHERWISE.
- WINDOW FRAME PROFILES AND COLOR TO MATCH EXISTING BUILDING 40.
- ALL METAL FLASHING AT PARAPET AND CANOPIES TO MATCH EXISTING BUILDING 40.
- MWP-1 TO MATCH EXISTING BUILDING 40 FINISH AND PROFILE. SEE DETAILS FOR FLASHING AND DEPTH FROM FACE OF PRE-CAST.
- ARCHITECTURAL PRE-CAST PANEL FINISH TO MATCH EXISTING.
- ALL DIMENSIONS ARE TO THE CENTERLINE OFF JOINT.
- GENERAL CONTRACTOR IS TO FIELD VERIFY THAT HORIZONTAL PRE-CAST JOINT LINES OF NEW BLDG ALIGN W/ THE EXISTING BUILDING.
- IG-1 = VISION PANEL INSULATED GLASS W/ GLASS COLOR MATCHING EXISTING.
- IG-2 = INSULATED GLASS, TEMPERED WHERE REQUIRED BY CODE.
- FOR TYPICAL PRE-CAST JOINT DETAIL SEE 5/AE511.
- FOR TYPICAL JOINT BETWEEN PRE-CAST PANELS SEE DETAIL 4/AE511.
- FOR TYPICAL PRE-CAST PANEL CORNER INTERSECTION SEE 1/AE511.
- FOR TYPICAL DEFLECTION DETAIL OF WINDOW SYSTEM @ FLOOR LINE SEE DETAIL 7/AE511.
- ALIGN PARAPET HEIGHTS OF BOTH BUILDINGS.

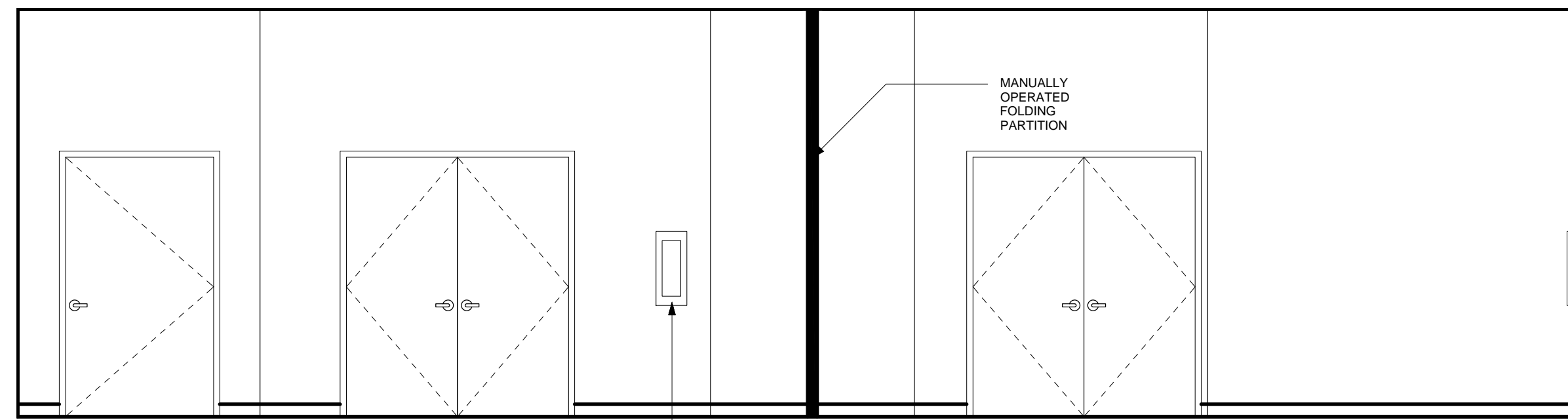
SHEET KEYNOTES:

- REFER TO SHEET AE101 FOR OVERALL DIMENSIONS UON.
- REFER TO SHEET AE406 FOR TYPICAL ELEVATOR AND STAIR2 DIMENSIONS, PARTITION TYPES FOR ALL FLOORS UON.
- REFER TO WALL SECTION 1/AE310 FOR FURRING TYPE AND DIMENSIONS FOR TYPICAL FURRING AT EXTERIOR WINDOWS.
- REFER TO SHEET AE202 FOR EXTERIOR WINDOW SIZES

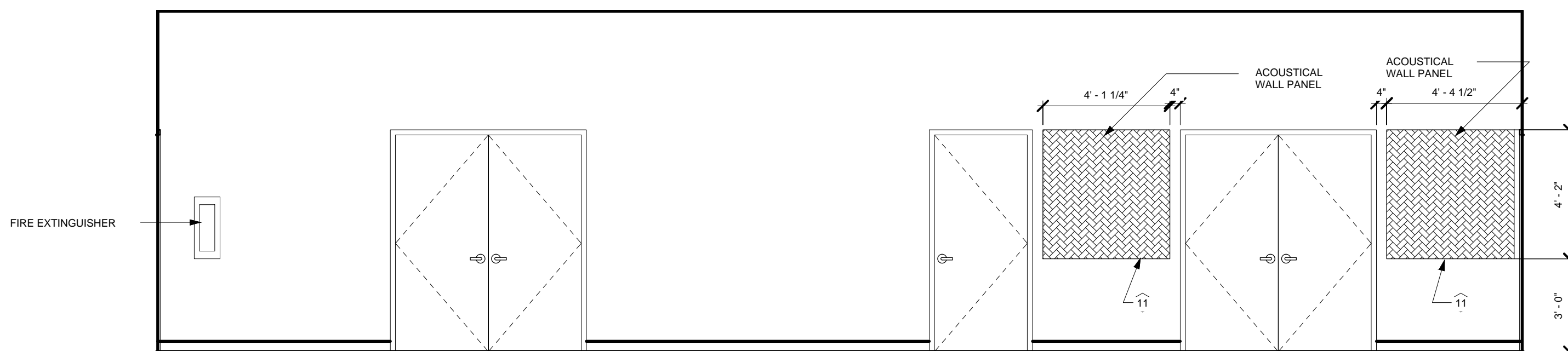
A three inches = one foot
B one and one half inches = one foot
C one inch = one foot
D three quarters inch = one foot
E one half inch = one foot
F three eighths inch = one foot
one quarter inch = one foot
one eighth inch = one foot



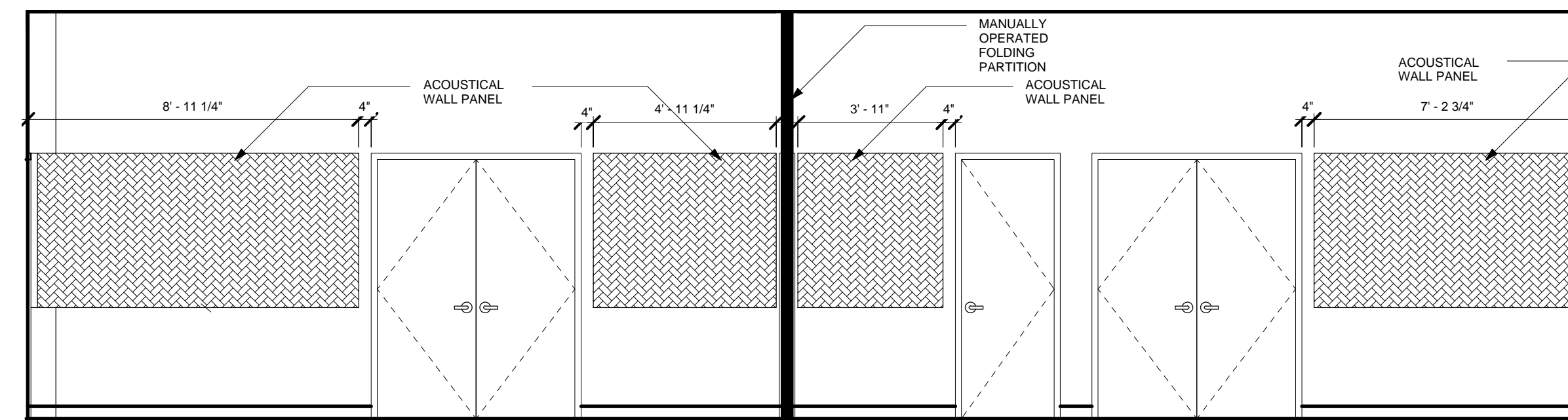
7 CONFERENCE B1120 ELEVATION (WEST)
3/8" = 1'-0"



8 CONFERENCE B1120 ELEVATION (NORTH)
3/8" = 1'-0"



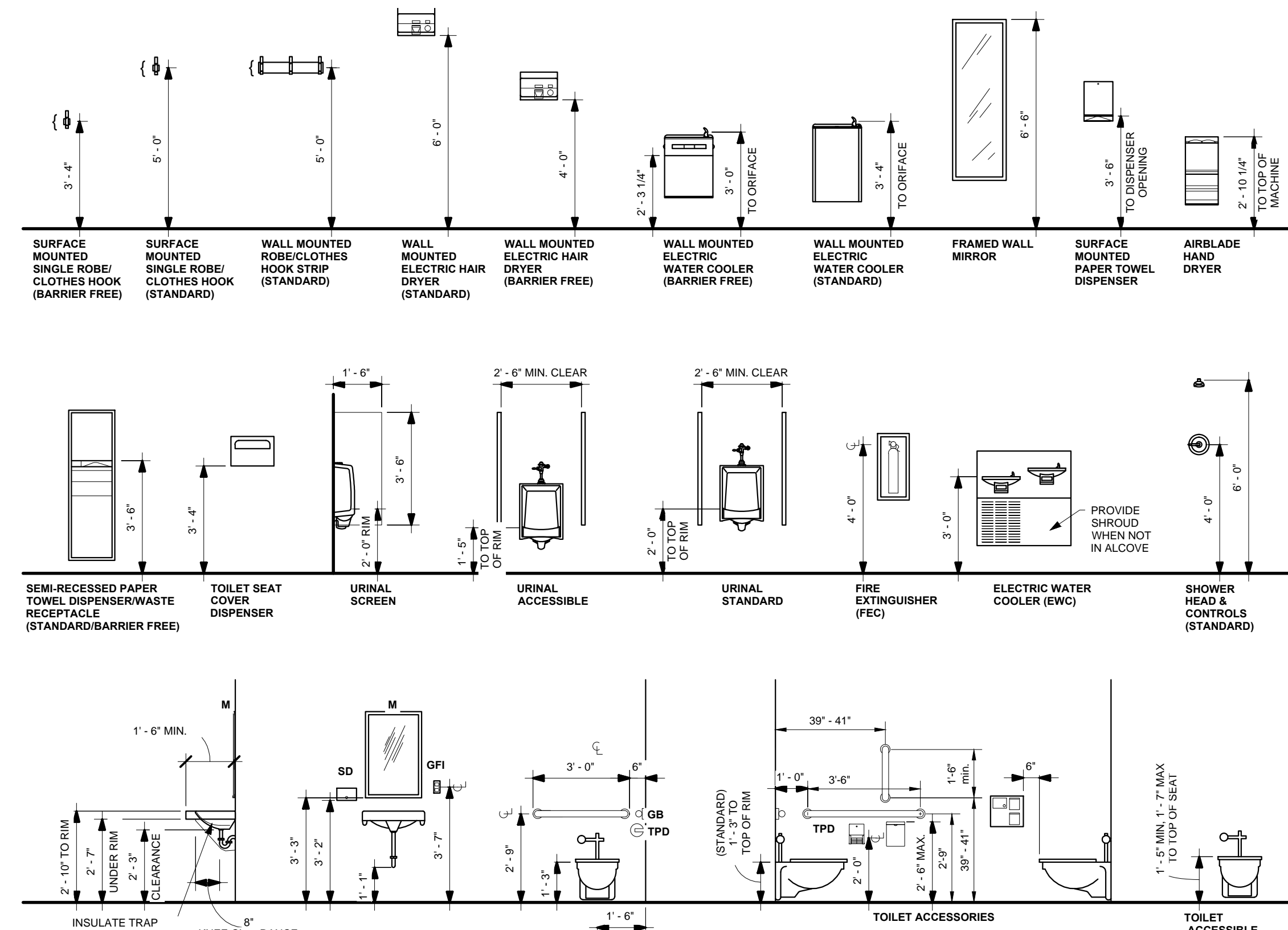
9 CONFERENCE B1120 ELEVATION (EAST)
3/8" = 1'-0"



10 CONFERENCE B1120 ELEVATION (SOUTH)
3/8" = 1'-0"

GENERAL NOTES

1. GENERAL CONTRACTOR TO PROVIDE GRAB BARS AND MIRRORS AS SPECIFIED. ALL TOILET ACCESSORIES SHOWN BUT NOT IDENTIFIED ON ELEVATIONS AND PLANS ARE F.I.O.
2. GENERAL CONTRACTOR TO COORDINATE WITH OWNER F.I.O. ACCESSORIES AND PROVIDE BLOCKING AS REQUIRED
3. G-7 MIRROR TO BE INSET IN TILE, TYPICAL
4. SEE SHEET AE702 FOR TYPICAL MOUNTING HEIGHTS
5. SEE DETAIL 2/AF101 FOR TILE LAYOUT INFORMATION
6. ALL TOILET ROOM AND JANITOR CLOSET ACCESSORIES ARE F010 EXCEPT GRAB BARS AND MIRRORS. GENERAL CONTRACTOR TO COORDINATE EXACT LOCATIONS WITH FACILITIES ENGINEER TO ENSURE PROPER LOCATION OF GENERAL CONTRACTOR INSTALLED BLOCKING IN WALLS.
7. ALL TOILET STALLS TO RECEIVE TOILET PAPER DISPENSERS, SEAT COVER DISPENSERS AND WOMEN'S TOILETS TO RECEIVE SANITARY NAPKIN CONTAINERS.



1 TYPICAL MOUNTING HEIGHTS
3/8" = 1'-0"

CONSULTANTS:

ADDENDUM 004	02/17/2016
BID DOCUMENT	11/02/2015
100% CONSTRUCTION DOCUMENT	1/26/2015
99% CONSTRUCTION DOCUMENT	12/30/14
95% CONSTRUCTION DOCUMENT	12/17/14
65% DESIGN DEVELOPMENT	10/13/14
65% DESIGN DEVELOPMENT	6/27/14
Revisions	Issues
	Date

ARCHITECT/ENGINEERS:



BASEMENT INTERIOR ELEVATION

Approved: Project Director

Approver

Project Title
INTENSIVE OUTPATIENT MENTAL HEALTH AND EDUCATION BUILDING
4815 NORTH ASSEMBLY ST.
SPOKANE, WASHINGTON 99205

Location
SPOKANE, WASHINGTON 99205

Issue Date
11/2/2015

Checked
Checker

Drawn
Author

Project Number
668-313

Building Number
40A

Drawing Number
AE702

Dwg. of

Office of
Construction
and Facilities
Management



A

three inches = one foot

B

one and one half inches = one foot

C

one inch = one foot

D

three quarters inch = one foot

E

one half inch = one foot

F

three eighths inch = one foot

one quarter inch = one foot

one eighth inch = one foot

GENERAL NOTES

1. GENERAL CONTRACTOR TO PROVIDE GRAB BARS AND MIRRORS AS SPECIFIED. ALL TOILET ACCESSORIES SHOWN BUT NOT IDENTIFIED ON ELEVATIONS AND PLANS ARE F.I.O.
2. GENERAL CONTRACTOR TO COORDINATE WITH OWNER F.I.O. ACCESSORIES AND PROVIDE BLOCKING AS REQUIRED
3. G-7 MIRROR TO BE INSET IN TILE, TYPICAL
4. SEE SHEET AE702 FOR TYPICAL MOUNTING HEIGHTS
5. SEE DETAIL 2/AF101 FOR TILE LAYOUT INFORMATION
6. ALL TOILET ROOM AND JANITOR CLOSET ACCESSORIES ARE F.O.I.O EXCEPT GRAB BARS AND MIRRORS. GENERAL CONTRACTOR TO COORDINATE EXACT LOCATIONS WITH FACILITIES ENGINEER TO ENSURE PROPER LOCATION OF GENERAL CONTRACTOR INSTALLED BLOCKING IN WALLS.
7. ALL TOILET STALLS TO RECEIVE TOILET PAPER DISPENSERS, SEAT COVER DISPENSERS AND WOMEN'S TOILETS TO RECEIVE SANITARY NAPKIN CONTAINERS.

17 JAN B1109 (NORTH)
3/8" = 1'-0"

18 JAN B1109 (SOUTH)
3/8" = 1'-0"

16 JAN B1109 (EAST)
3/8" = 1'-0"

15 JAN B1109 (WEST)
3/8" = 1'-0"

10 CORRIDOR B B1106 (SOUTH)
3/8" = 1'-0"

9 CORRIDOR A B1105 (EAST)
3/8" = 1'-0"

14 MISC STORAGE B1114 (SOUTH)
3/8" = 1'-0"

13 MISC STORAGE B1114 (EAST)
3/8" = 1'-0"

12 MISC STORAGE B1114 (NORTH)
3/8" = 1'-0"

11 MISC STORAGE B1114 (WEST)
3/8" = 1'-0"

6 WOMEN B1111 ELEVATION (NORTH)
3/8" = 1'-0"

5 WOMEN B1111 ELEVATION (WEST)
3/8" = 1'-0"

7 WOMEN B1111 ELEVATION (EAST)
3/8" = 1'-0"

8 WOMEN B1111 ELEVATION (SOUTH)
3/8" = 1'-0"

2 MEN B1110 ELEVATION (NORTH)
3/8" = 1'-0"

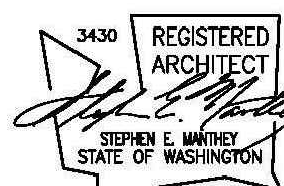
1 MEN B1110 ELEVATION (WEST)
3/8" = 1'-0"

3 MEN B1110 ELEVATION (EAST)
3/8" = 1'-0"

4 MEN B1110 ELEVATION (SOUTH)
3/8" = 1'-0"

ARCHITECT/ENGINEERS:

KMA
ARCHITECTS
14410 SE Petrovitsky Rd. Suite 206
Renton, Washington 98058
425-291-7053



CONSULTANTS:

Revisions	Issues	Date
	ADDENDUM 004	02/17/2016
	BID DOCUMENT	11/02/2015
	100% CONSTRUCTION DOCUMENT	1/26/2015
		12/30/14
	99% CONSTRUCTION DOCUMENT	12/17/14
	95% CONSTRUCTION DOCUMENT	10/13/14
	65% DESIGN DEVELOPMENT	6/27/14

Drawing Title BASEMENT INTERIOR ELEVATION

Approved: Project Director
Approver

Project Title
**INTENSIVE OUTPATIENT MENTAL HEALTH
AND EDUCATION BUILDING**
4815 NORTH ASSEMBLY ST.
SPOKANE, WASHINGTON 99205

Location
SPOKANE, WASHINGTON 99205

Issue Date
11/2/2015

Checked
Checker

Drawn
Author

Drawing Number
AE703
Dwg. of

BID DOCUMENT NOVEMBER/02/2015

Project Number
668-313
Building Number
40A
Drawing Number
AE703

Office of
Construction
and Facilities
Management



