

three inches = one foot
6"

one and one half inches = one foot
1
0
6"

one inch = one foot
0
6"

three quarters inch = one foot
2
0
6"

one half inch = one foot
4
0
6"

three eighths inch = one foot
8
0
6"

one quarter inch = one foot
4
0
6"

one eighth inch = one foot
16
0
6"

A

B

C

D

E

F

ROME VAMC

MAINTENANCE GARAGE (CBOC)

ROOF REPLACEMENT AND

MASONRY RESTORATION

DONALD J. MITCHELL VA OUTPATIENT CLINIC

125 BROOKLEY ROAD

ROME, NY 13441

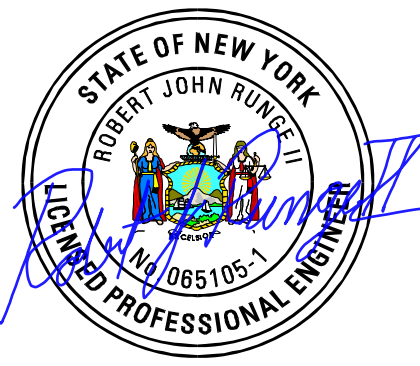

MECHANICAL / ELECTRICAL / PLUMBING /
FIRE PROTECTION / STRUCTURAL:

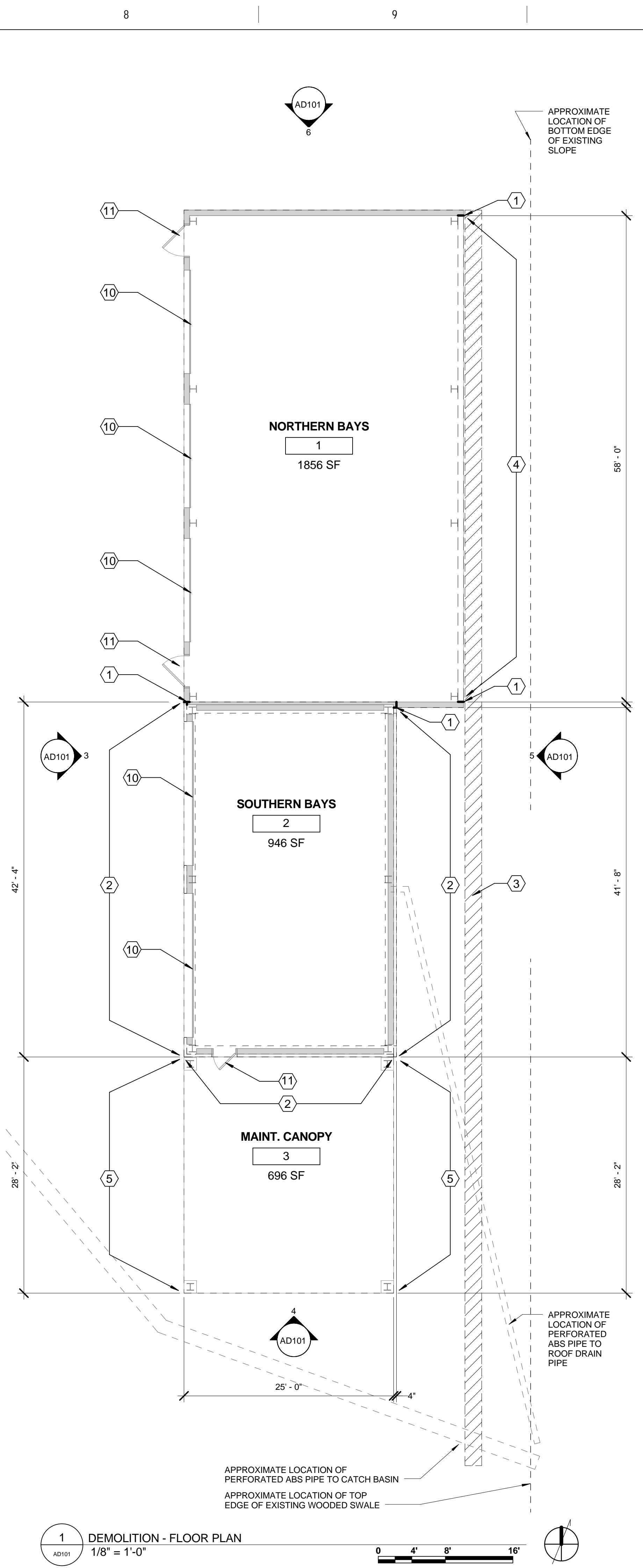
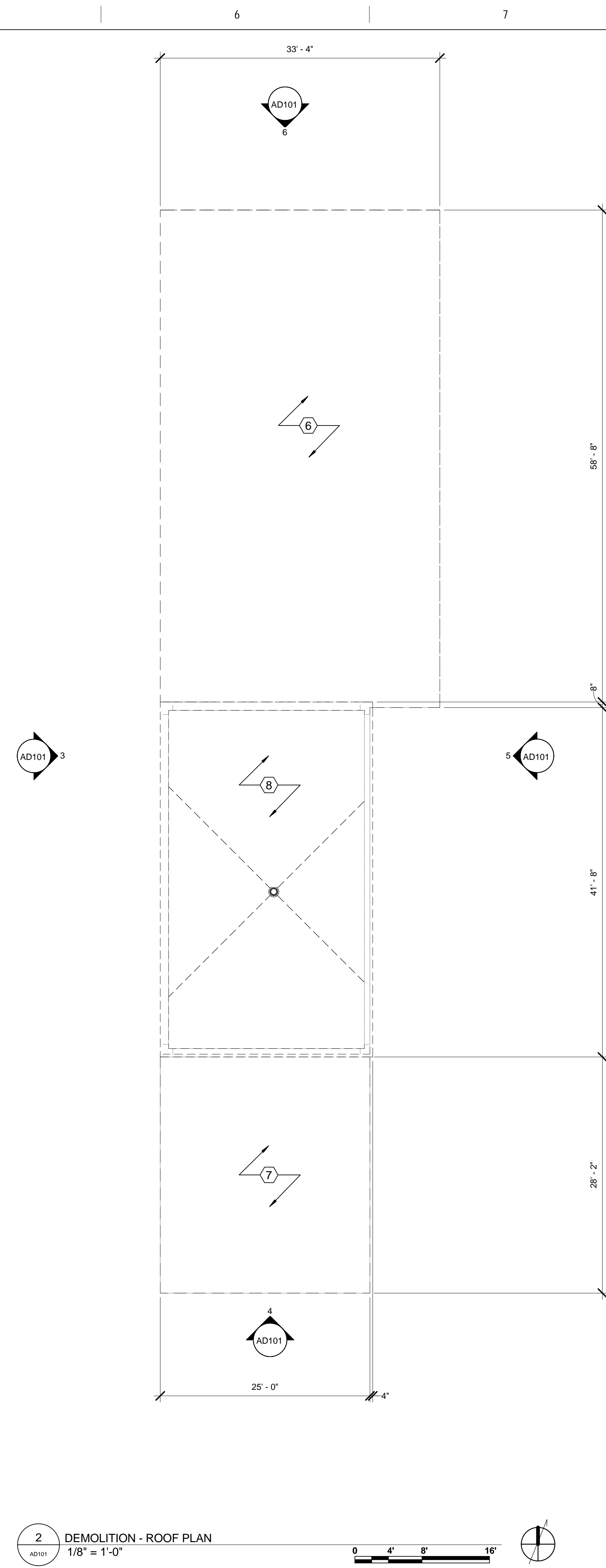
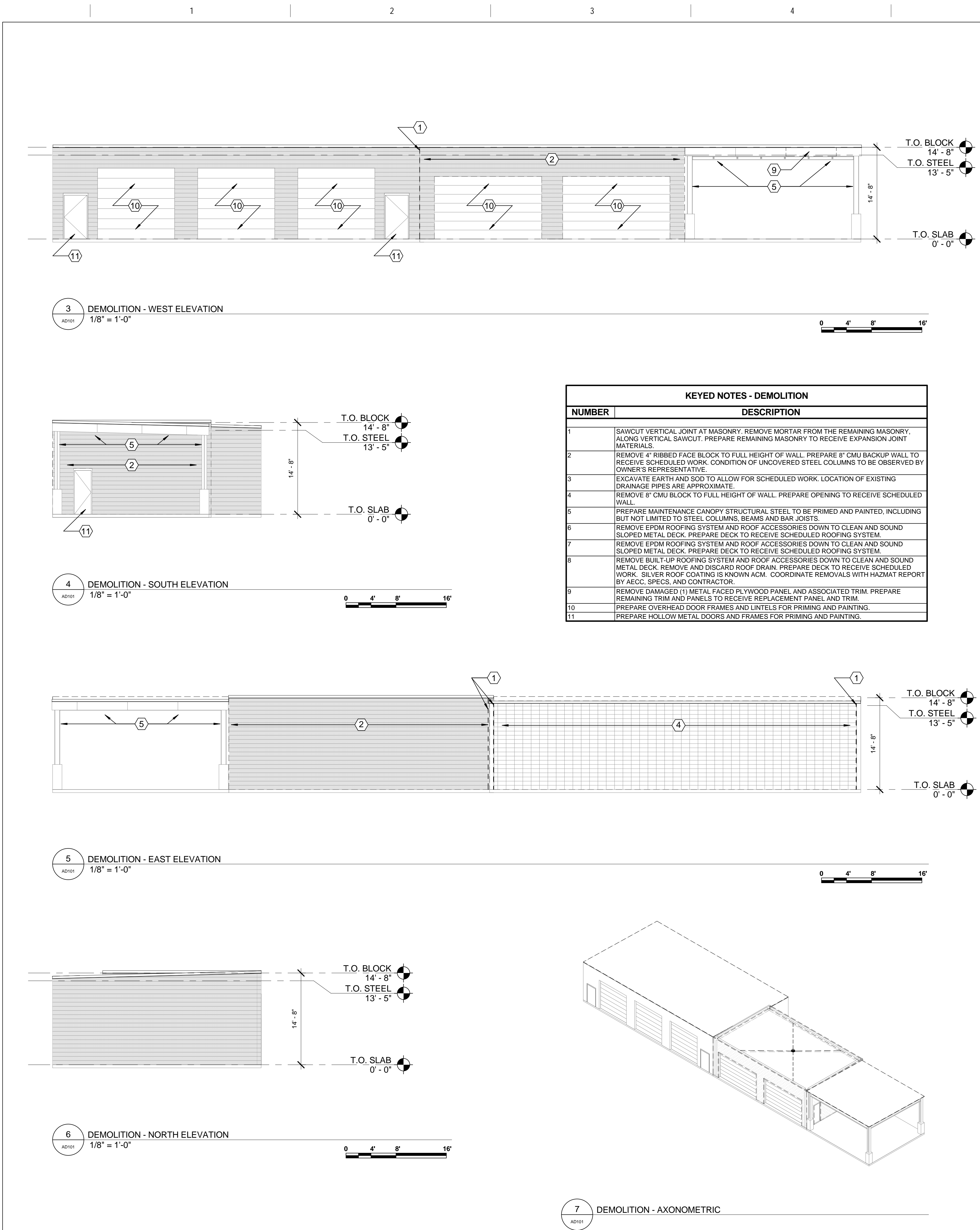
RJR ENGINEERING, P.C.
23 Mechanic Street– P.O. Box 344
Springville, New York 14141–0344
716–592–3980

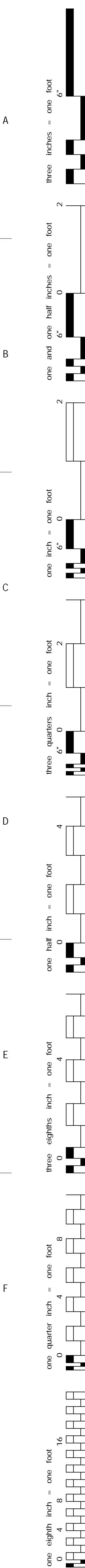
ARCHITECT:
N.K.BHANDARI, ARCHITECTURE & ENGINEERING, P.C.
1005 West Fayette Street, Suite 4A
Syracuse, NY 13204
315–428–1177

VA CONTRACT #VA528-14-C-0057
VA PO #528-C44215

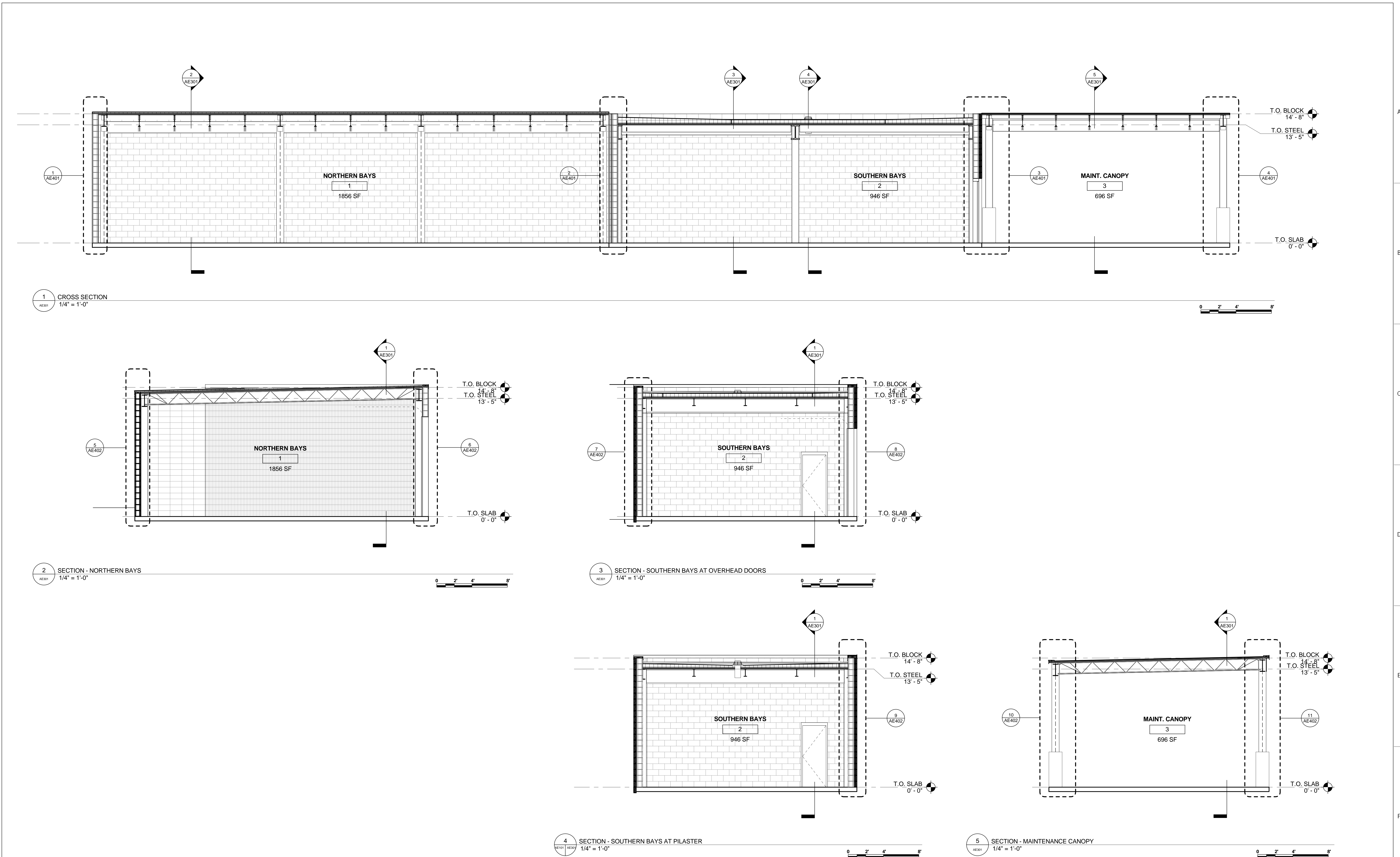
CONSTRUCTION DOCUMENTS

<div>Revisions</div> <div>Date</div>	<div>CONSULTANTS:</div> <div><div>NKB</div><div>N.K. BHANDARI</div><div>ARCHITECTURE & ENGINEERING, P.C.</div></div> <div>1005 W. Fayette Street, Suite 4A Syracuse, NY 13204</div> <div>Phone 315.428.1177 Fax 315.428.9822 www.nkbpc.com</div>	<div></div>	<div>ARCHITECT/ENGINEERS:</div> <div><div>RJR</div><div>www.rjpc.com</div><div>RJR ENGINEERING, P.C.</div><div>PROFESSIONAL ENGINEERS</div><div>P.O. BOX 344 - 23 Mechanic Street Springville, New York 14141-0344</div></div>	<div>Drawing Title</div> <div>COVER SHEET</div>	<div>Project Title</div> <div>MAINTENANCE GARAGE (CBOC) ROOF REPLACEMENT AND MASONRY RESTORATION</div>	<div>Project Number</div> <div>528A7-14-711</div>	<div>DONALD J. MITCHELL VA OUTPATIENT CLINIC</div> <div>Department of Veterans Affairs</div>	
				<div>Approved Project Director</div>	<div>Location</div> <div>VA OUTPATIENT CLINIC, 125 BROOKLEY ROAD, ROME NY</div>	<div>Building Number</div> <div>509</div>		
				<div>Date</div> <div>09/05/2014</div>	<div>Checked</div> <div>WJP</div>	<div>Drawn</div> <div>CGR</div>		<div>Drawing Number</div> <div>G1001</div>
				<div>Dwg. 1 of 11</div>				

[illegible]

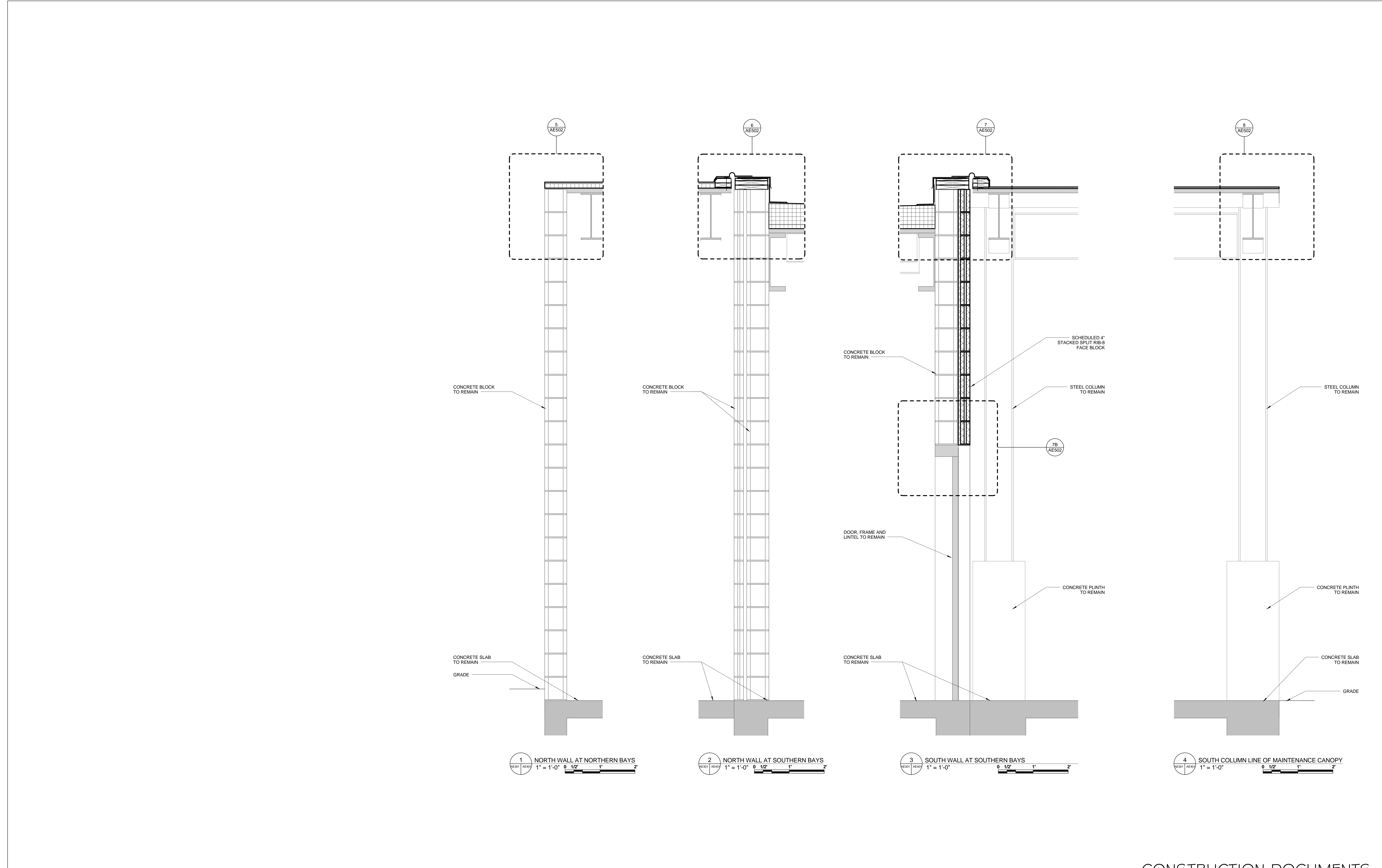


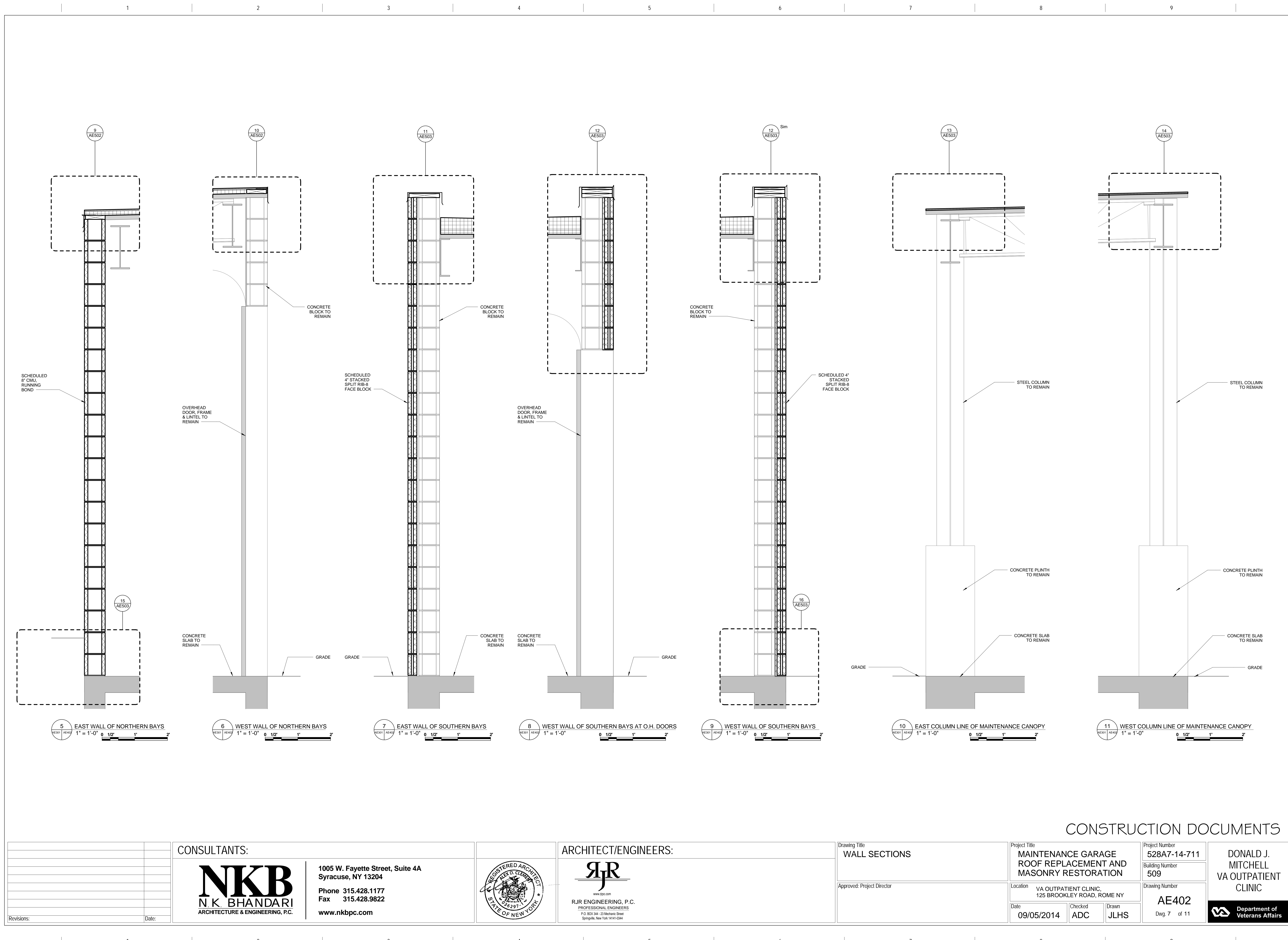
three inches = one foot
one and one half inches = one foot
one inch = one foot
three quarters inch = one foot
one half inch = one foot
three eighths inch = one foot
one eighth inch = one foot
one eighth inch = one foot



CONSTRUCTION DOCUMENTS

CONSULTANTS:		ARCHITECT/ENGINEERS:		Drawing Title BUILDING SECTIONS		Project Title MAINTENANCE GARAGE ROOF REPLACEMENT AND MASONRY RESTORATION		Project Number 528A7-14-711		DONALD J. MITCHELL VA OUTPATIENT CLINIC	
				Approved: Project Director		Location VA OUTPATIENT CLINIC, 125 BROOKLEY ROAD, ROME NY		Building Number 509		Date 09/05/2014	
1005 W. Fayette Street, Suite 4A Syracuse, NY 13204		RJR ENGINEERING, P.C. PROFESSIONAL ENGINEERS P.O. BOX 344 - 22 Mechanic Street Springville, New York 14141-0344				Checked ADC		Drawn JLHS		Dwg. 5 of 11	
Phone 315.428.1177 Fax 315.428.9822 www.nkbpc.com											

[illegible]

[illegible]

A

B

C

D

E

F

A

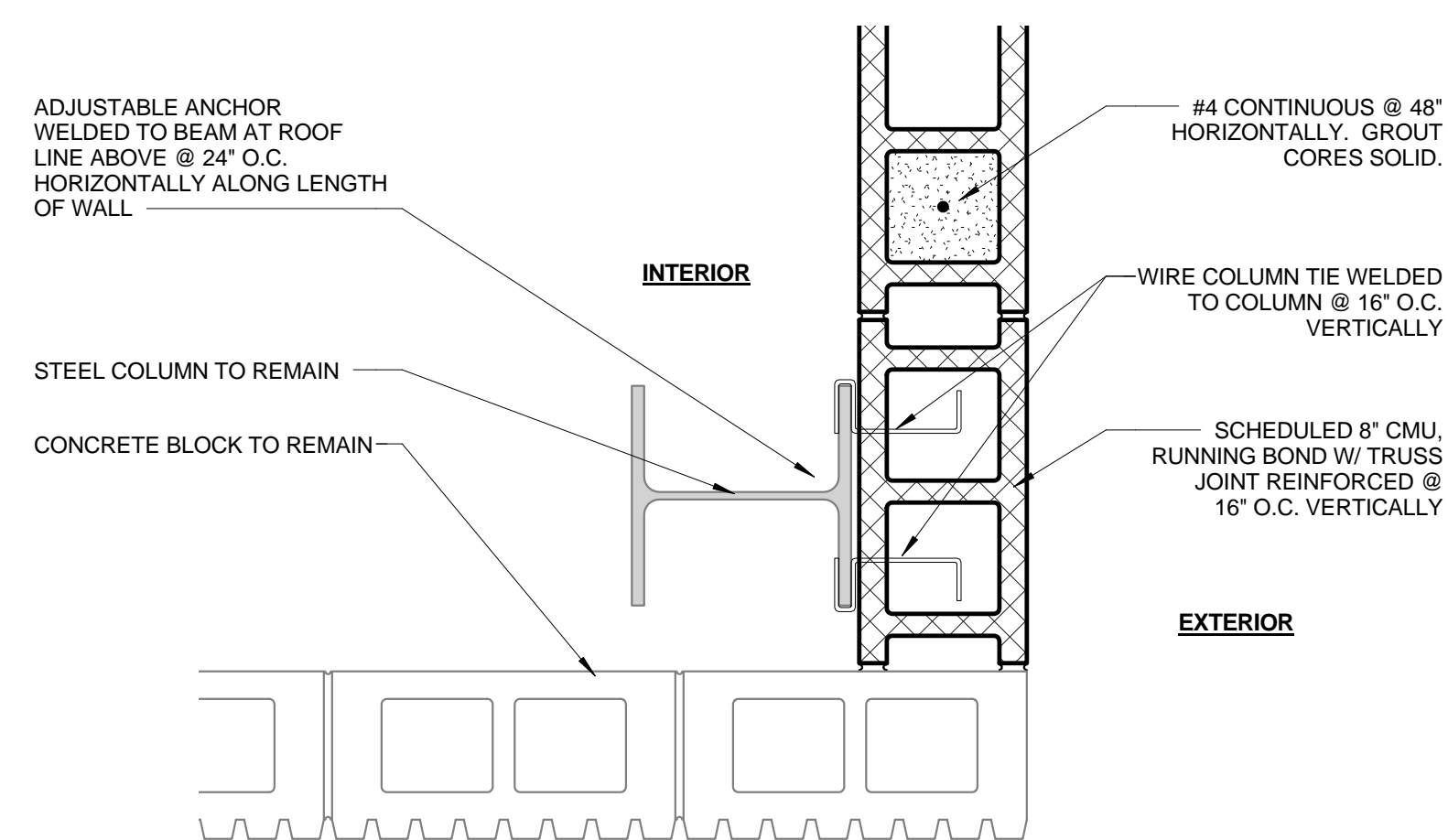
B

C

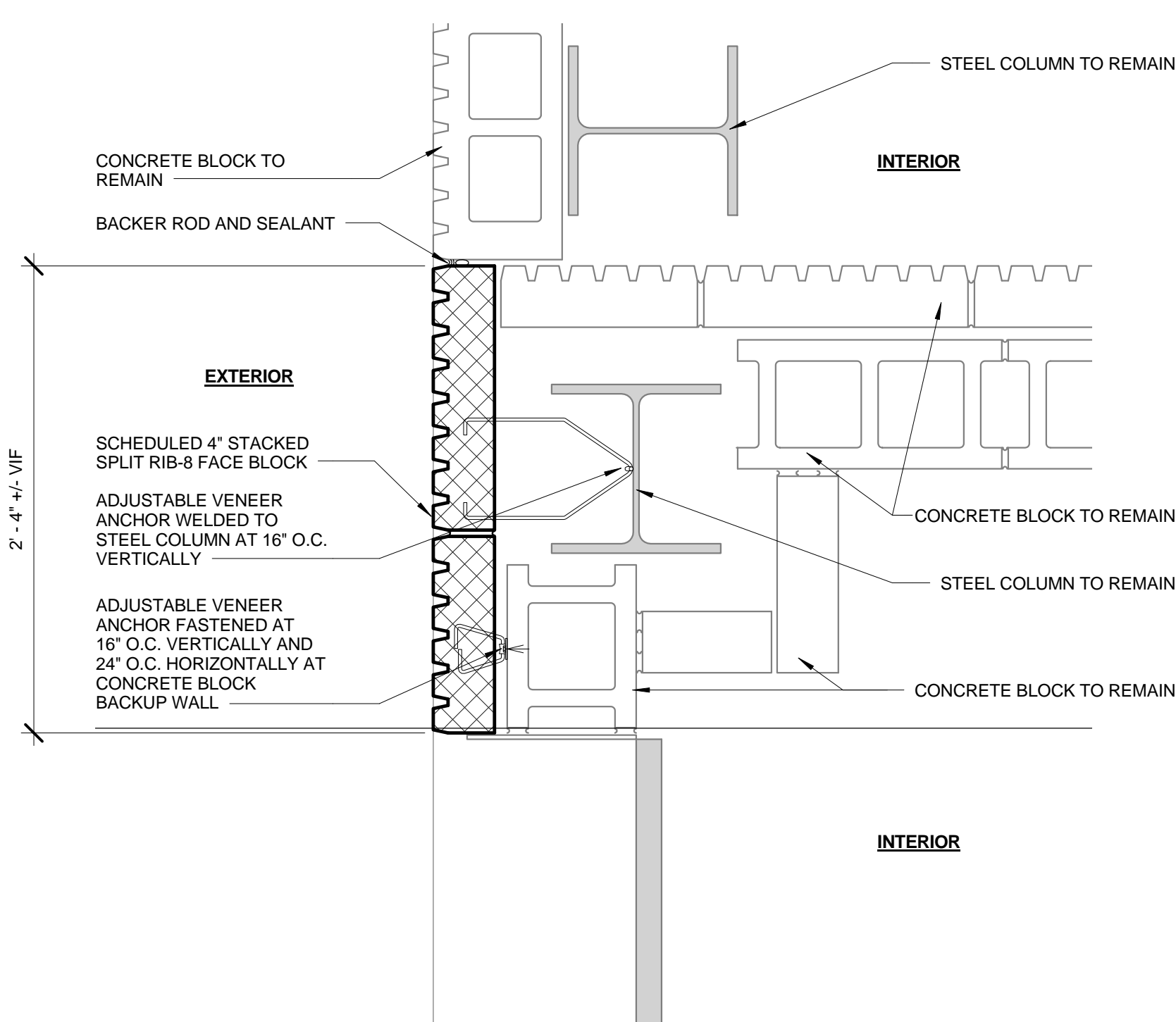
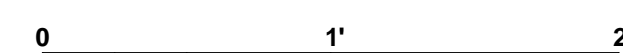
D

E

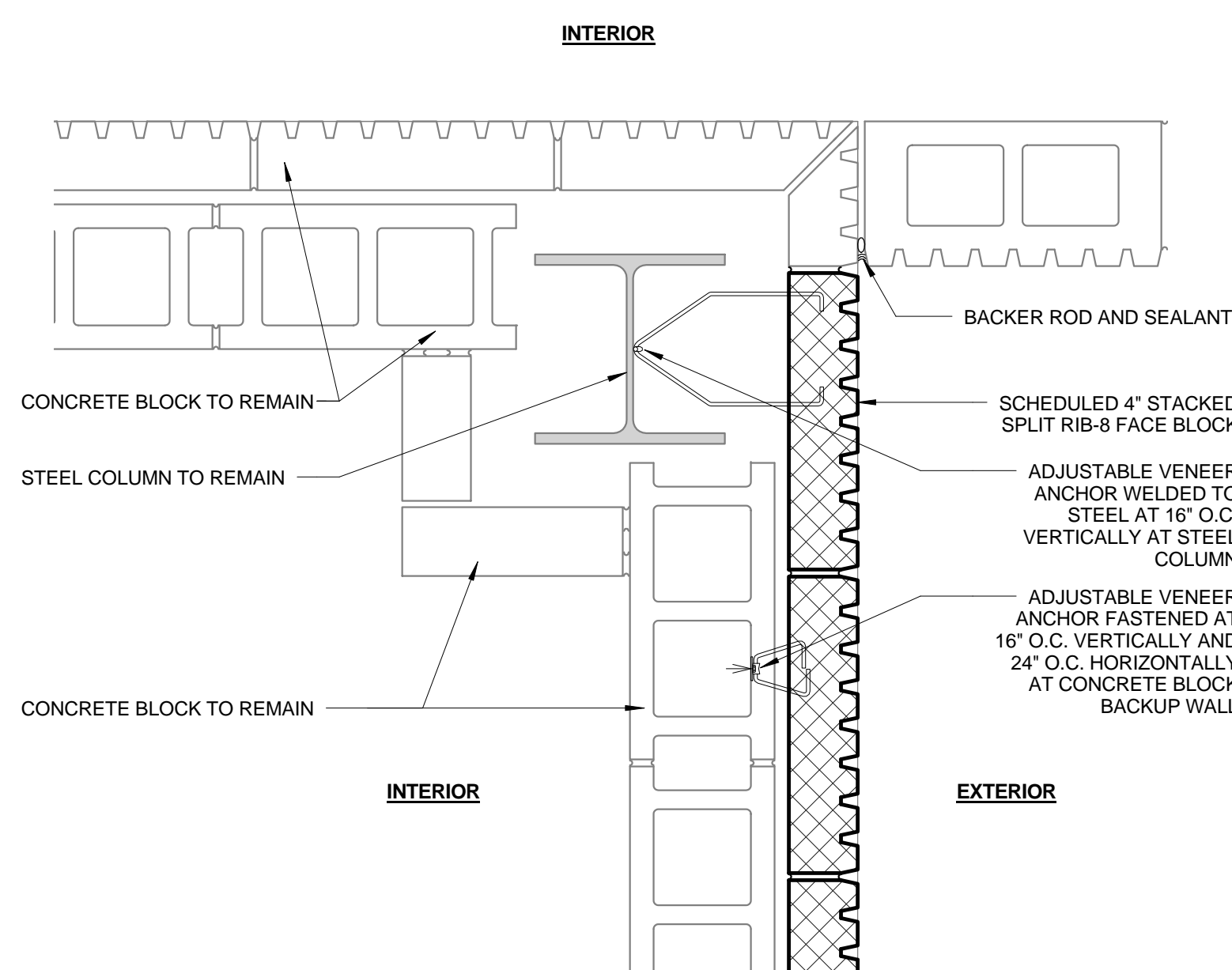
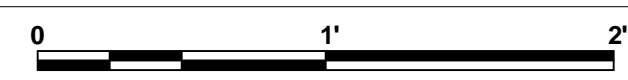
F



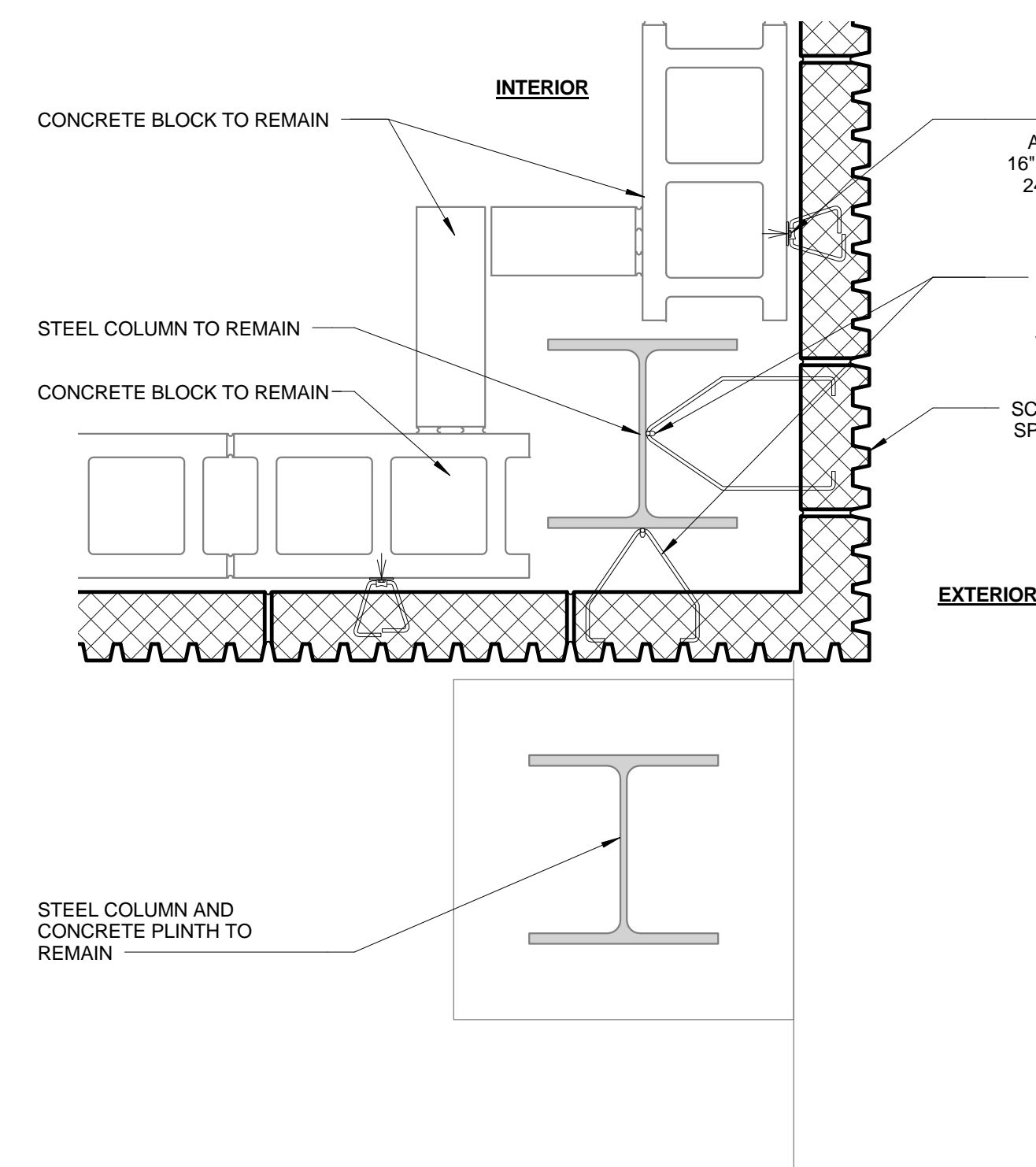
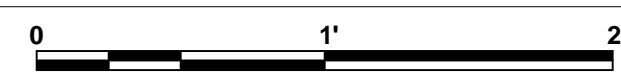
1 EASTERN CORNERS OF NORTHERN BAYS
1 1/2" = 1'-0"



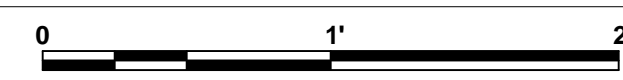
2 NORTH WEST CORNER OF SOUTHERN BAYS
1 1/2" = 1'-0"



3 NORTH EAST CORNER OF SOUTHERN BAYS
1 1/2" = 1'-0"



4 SOUTHERN CORNERS OF SOUTHERN BAYS
1 1/2" = 1'-0"

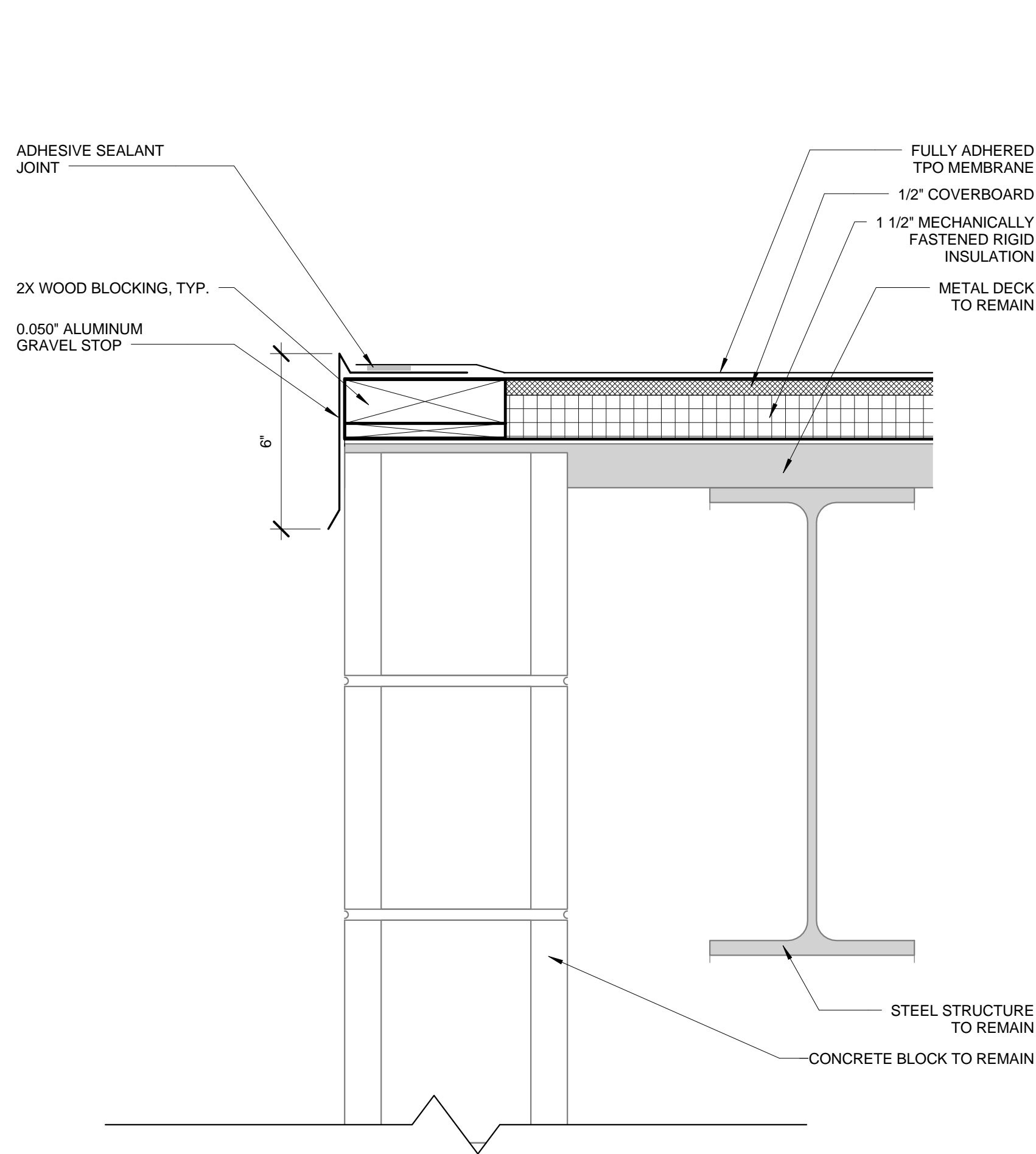


CONSTRUCTION DOCUMENTS

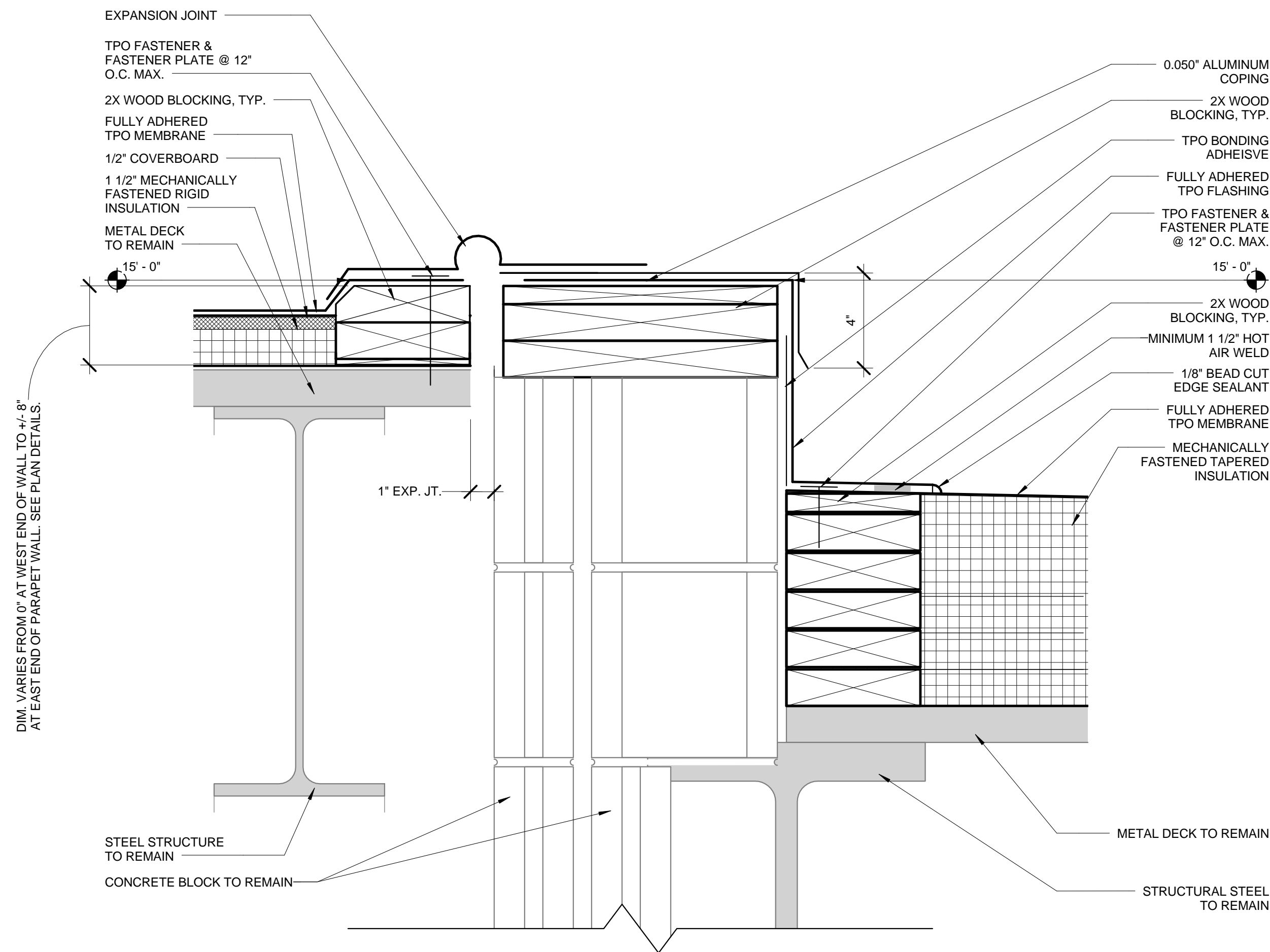
CONSULTANTS:		ARCHITECT/ENGINEERS:		Drawing Title DETAILS		Project Title MAINTENANCE GARAGE ROOF REPLACEMENT AND MASONRY RESTORATION		Project Number 528A7-14-711		DONALD J. MITCHELL VA OUTPATIENT CLINIC	
				Approved: Project Director		Location VA OUTPATIENT CLINIC, 125 BROOKLEY ROAD, ROME NY		Building Number 509		Date 09/05/2014	
1005 W. Fayette Street, Suite 4A Syracuse, NY 13204		P.O. BOX 344 - 22 Mechanic Street Springville, New York 14141-0344		Checked ADC		Drawn JLHS		Drawing Number AE501		Dwg. 8 of 11	
Phone 315.428.1177 Fax 315.428.9822		www.nkbpc.com									

three inches = one foot
one and one half inches = one foot
one inch = one foot
three quarters inch = one foot
one half inch = one foot
three eighths inch = one foot
one quarter inch = one foot
one eighth inch = one foot
one eighth inch = one foot

A
B
C
D
E
F

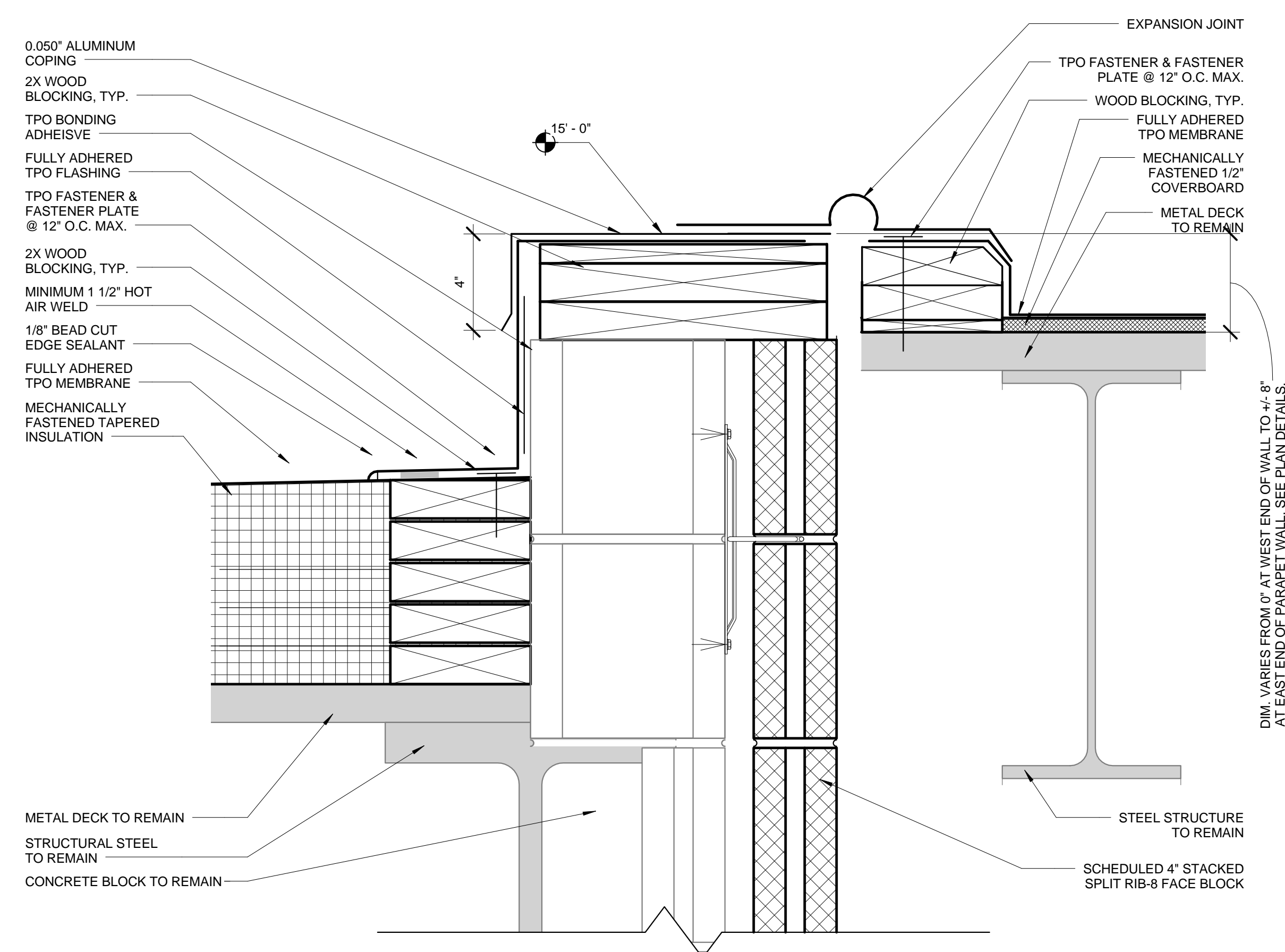


5 ROOF EDGE DETAIL - NORTH WALL AT NORTHERN BAYS (RAKE)
3" = 1'-0"



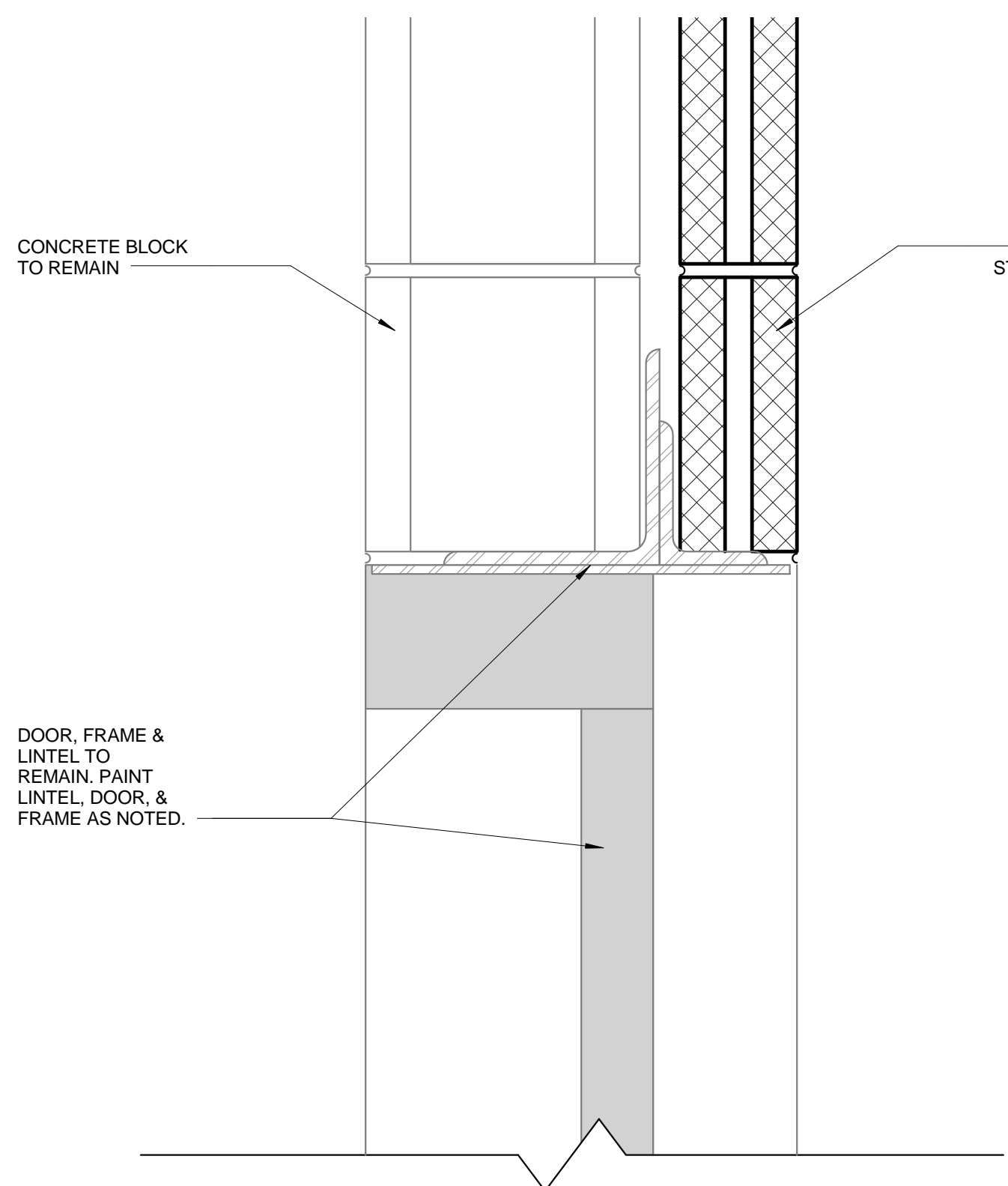
- NOTES:
1. DETAIL SHOWN AT MID POINT. BLOCKING AT ADDITION ROOFS TO BE PROVIDED AT LEVEL/CONSTANT HEIGHT TO MATCH LEVEL OF BLOCKING AT PARAPET.
 2. POSITION FASTENING PLATES 1/2" (13 mm) TO 1" (25 mm) FROM EDGE OF DECK MEMBRANE.
 3. APPROXIMATELY 1/8" (3 mm) DIAMETER BEAD OF CUT-EDGE SEALANT IS REQUIRED ON CUT EDGES OF TPO REINFORCED MEMBRANE.
 4. WHEN COUNTERFLASHING IS USED FOR TERMINATION, BONDING ADHESIVE IS NOT REQUIRED WHEN FLASHING HEIGHT IS 12" (300 mm) OR LESS. WHEN COPING OR A TERMINATION BAR IS USED, ADHESIVE MAY BE ELIMINATED WHEN FLASHING HEIGHT IS 18" (500 mm) OR LESS.

6 PARAPET DETAIL - NORTH WALL AT SOUTHERN BAYS (WEST END)
3" = 1'-0"

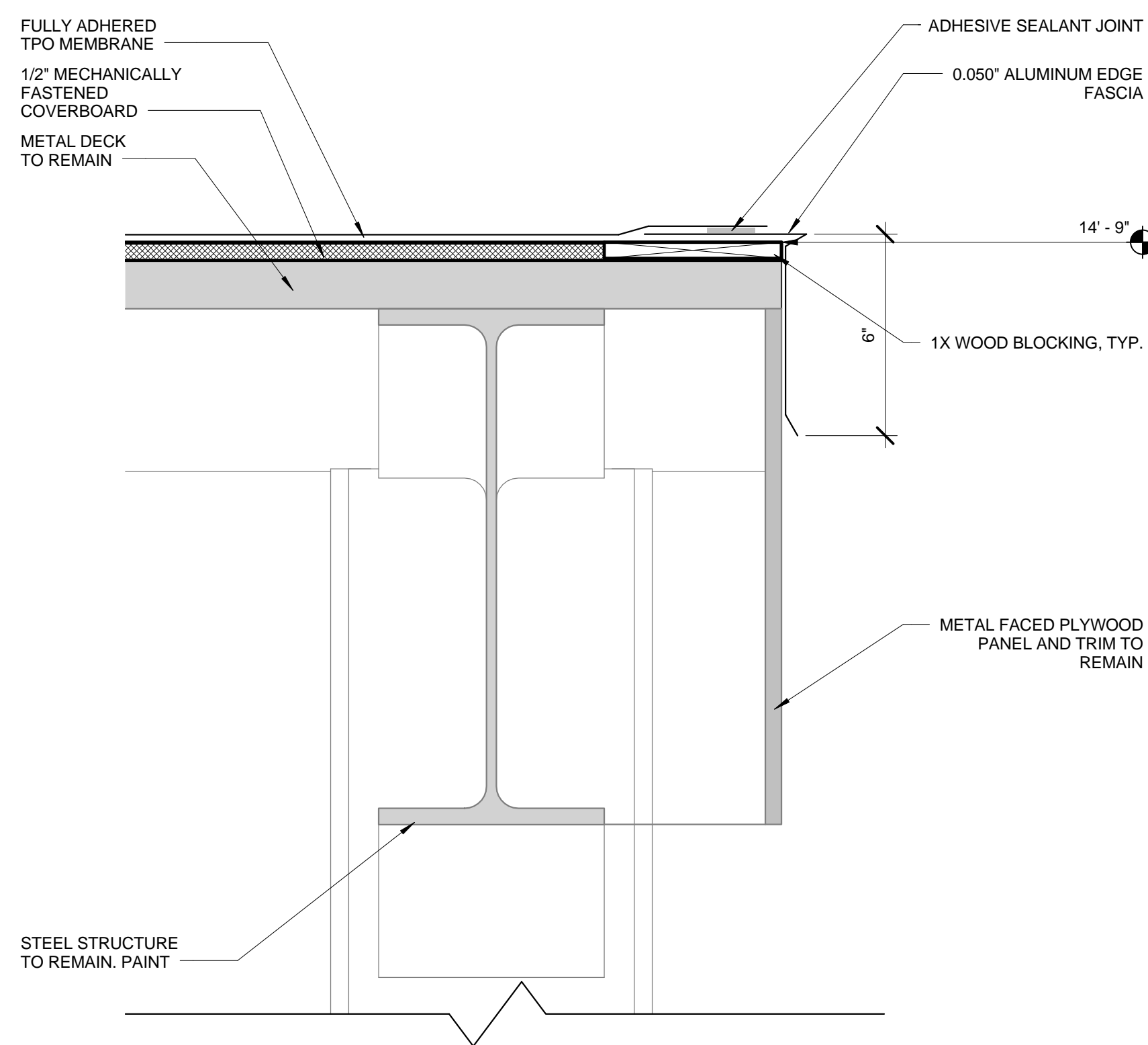


- NOTES:
1. DETAIL SHOWN AT MID POINT. BLOCKING AT ADDITION ROOFS TO BE PROVIDED AT LEVEL/CONSTANT HEIGHT TO MATCH LEVEL OF BLOCKING AT PARAPET.
 2. POSITION FASTENING PLATES 1/2" (13 mm) TO 1" (25 mm) FROM EDGE OF DECK MEMBRANE.
 3. APPROXIMATELY 1/8" (3 mm) DIAMETER BEAD OF CUT-EDGE SEALANT IS REQUIRED ON CUT EDGES OF TPO REINFORCED MEMBRANE.
 4. WHEN COUNTERFLASHING IS USED FOR TERMINATION, BONDING ADHESIVE IS NOT REQUIRED WHEN FLASHING HEIGHT IS 12" (300 mm) OR LESS. WHEN COPING OR A TERMINATION BAR IS USED, ADHESIVE MAY BE ELIMINATED WHEN FLASHING HEIGHT IS 18" (500 mm) OR LESS.

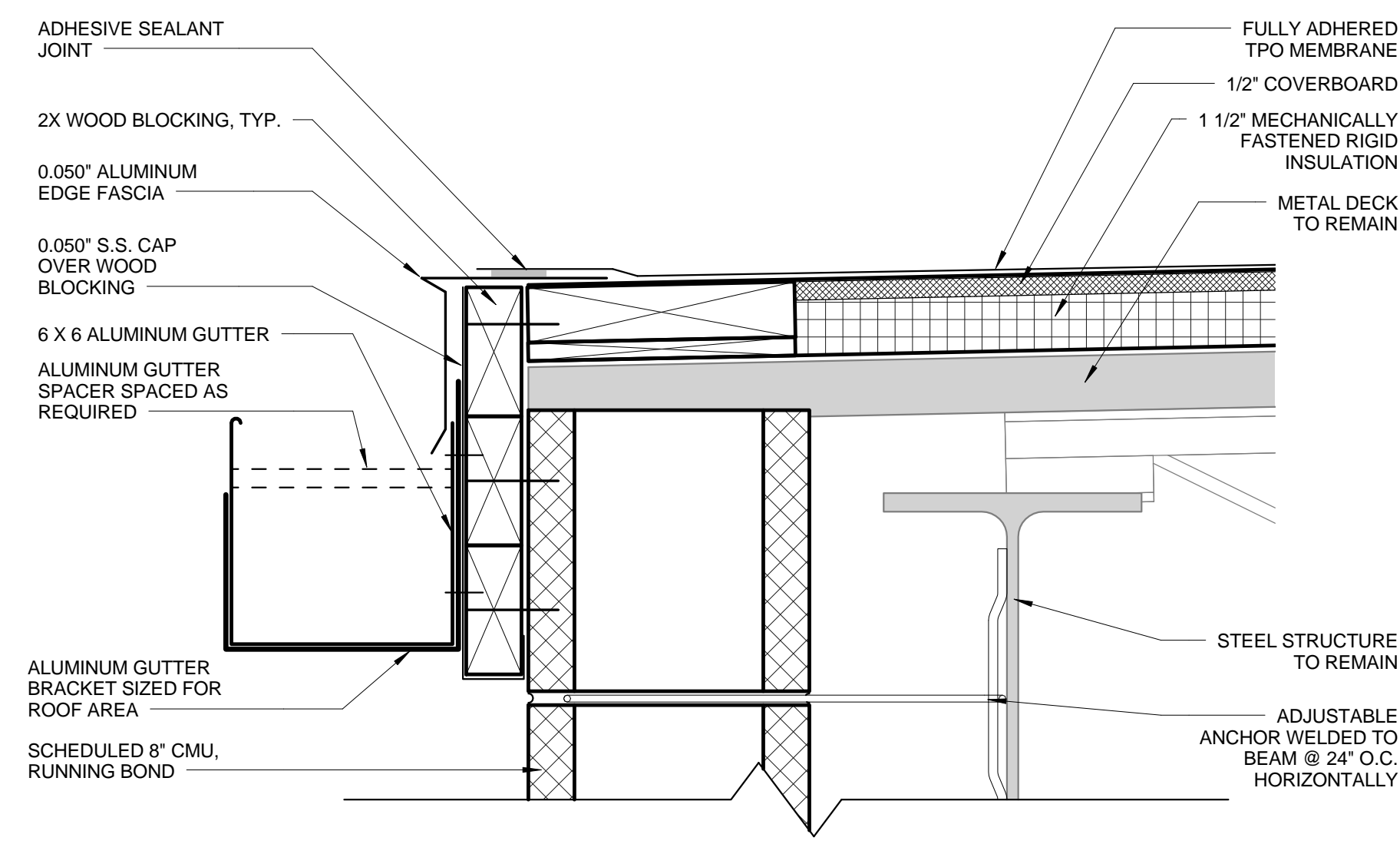
7 PARAPET DETAIL - SOUTH WALL AT SOUTHERN BAYS
3" = 1'-0"



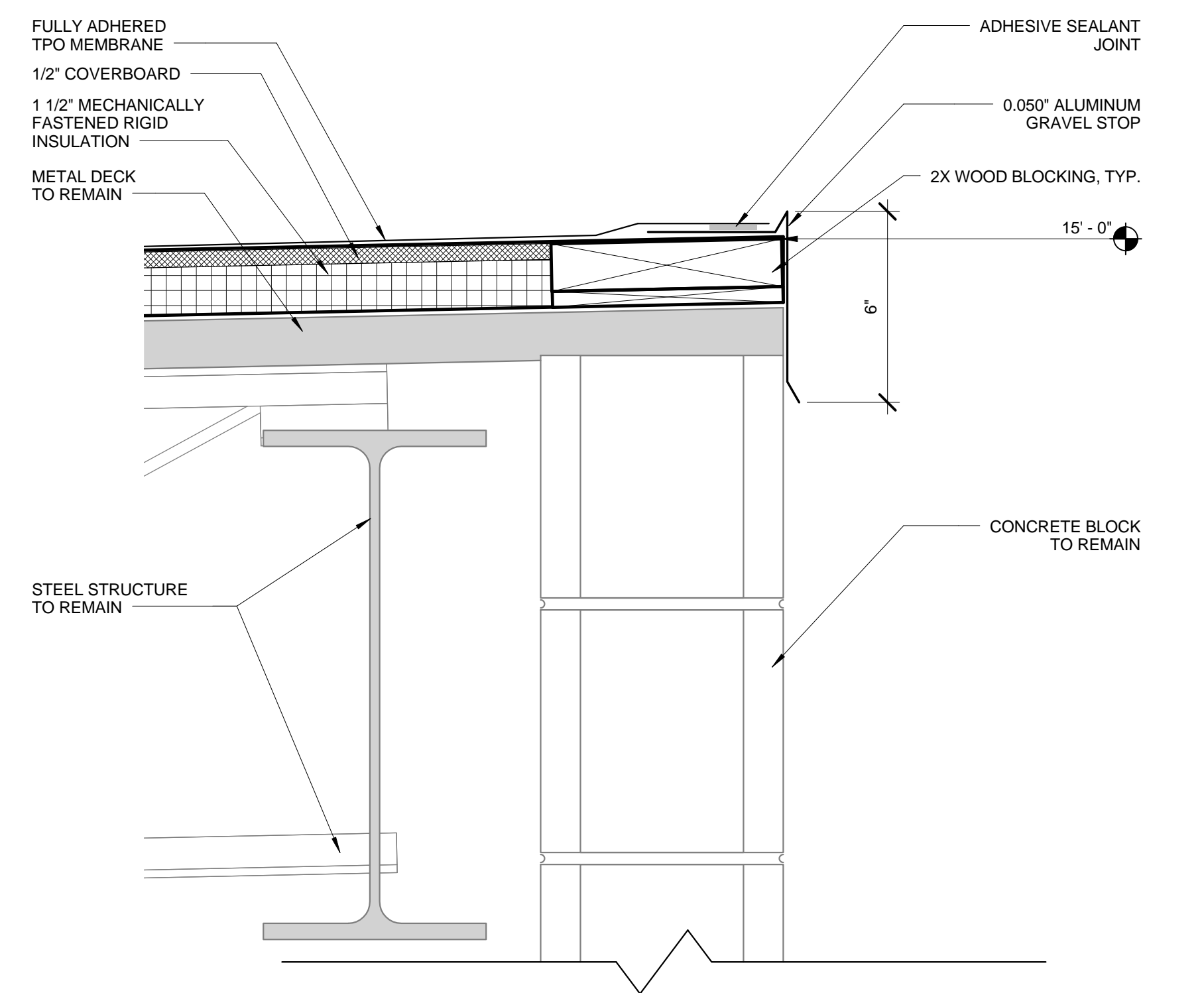
7B EXISTING DOOR FRAMES AT SOUTH WALL AT SOUTHERN BAYS
3" = 1'-0"



8 ROOF EDGE DETAIL - SOUTH COLUMN LINE OF MAINTENANCE CANOPY
3" = 1'-0"



9 ROOF EDGE DETAIL - EAST WALL OF NORTHERN BAYS
3" = 1'-0"



10 ROOF EDGE DETAIL - WEST WALL OF NORTHERN BAYS (HIGH SIDE)
3" = 1'-0"

CONSTRUCTION DOCUMENTS

CONSULTANTS:		ARCHITECT/ENGINEERS:		Drawing Title		Project Title		Project Number		DONALD J. MITCHELL VA OUTPATIENT CLINIC	
NKB N. K. BHANDARI ARCHITECTURE & ENGINEERING, P.C.		RJR RJR ENGINEERING, P.C. PROFESSIONAL ENGINEERS P.O. BOX 344 - 22 Mechanic Street Springville, New York 14141-0344		DETAILS		MAINTENANCE GARAGE ROOF REPLACEMENT AND MASONRY RESTORATION		528A7-14-711		Building Number 509	
1005 W. Fayette Street, Suite 4A Syracuse, NY 13204		Phone 315.428.1177 Fax 315.428.9822 www.nkbpc.com		Approved: Project Director		Location VA OUTPATIENT CLINIC, 125 BROOKLEY ROAD, ROME NY		Drawing Number AE502		Dwg. 9 of 11	
Date: 09/05/2014		Checked ADC		Drawn JLHS		Date 09/05/2014		Checked ADC		Drawn JLHS	
Revisions:		Date:								Department of Veterans Affairs	



A horizontal scale bar with markings at 0, 3, 6, and 12 inches. The bar is divided into segments: 0 to 3 inches is white, 3 to 6 inches is black, 6 to 12 inches is white, and 12 inches is black.



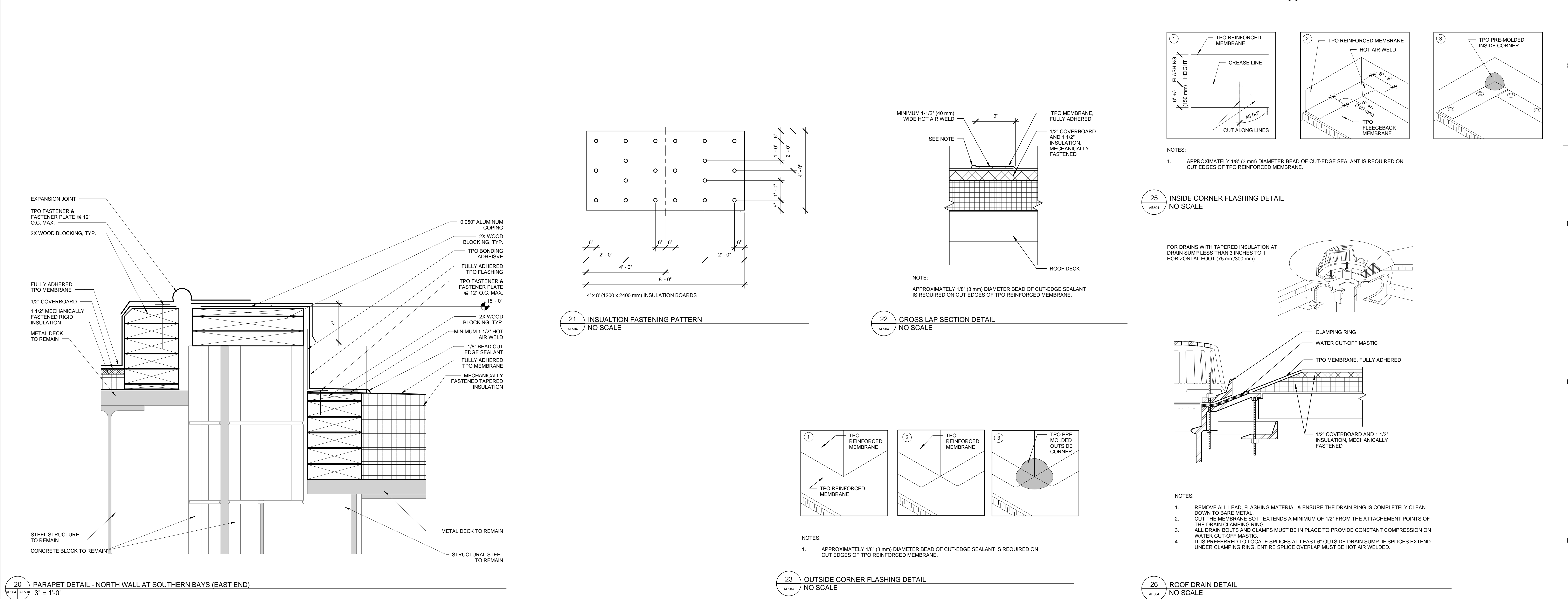
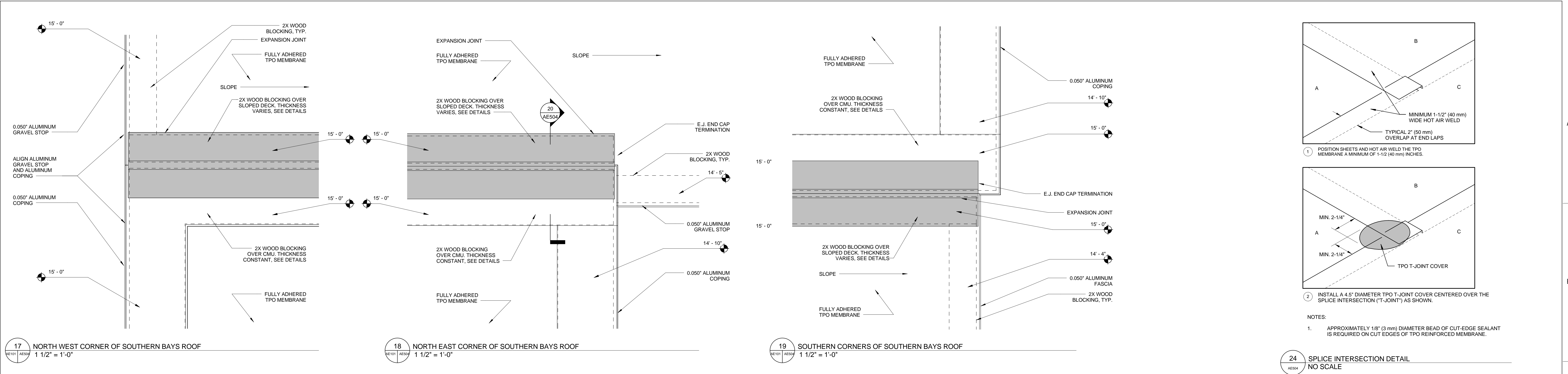
A horizontal graphic scale bar with four segments. The segments are labeled from left to right: 0, 3", 6", and 1'. The bar is black with white tick marks at each label.

A horizontal graphic scale bar with four segments. The segments are labeled from left to right as 0, 3", 6", and 1'. The bar is black with white tick marks at each label.



A horizontal number line with tick marks at 0, 3", 6", and 1'.

Department of
Veterans Affairs



Revisions:

Date:

CONSULTANTS:

NKB
N. K. BHANDARI
ARCHITECTURE & ENGINEERING, P.C.

1005 W. Fayette Street, Suite 4A
Syracuse, NY 13204
Phone 315.428.1177
Fax 315.428.9822
www.nkbpc.com

REGISTERED ARCHITECT
STATE OF NEW YORK
056297-1

RJR
www.rjre.com
RJR ENGINEERING, P.C.
PROFESSIONAL ENGINEERS
P.O. BOX 344 - 22 Mechanic Street
Springville, New York 14141-0344

Drawing Title
DETAILS

Approved: Project Director

Project Title
**MAINTENANCE GARAGE
ROOF REPLACEMENT AND
MASONRY RESTORATION**

Location
VA OUTPATIENT CLINIC,
125 BROOKLEY ROAD, ROME NY

Date
09/05/2014

Checked
ADC

Drawn
JLHS

Project Number
528A7-14-711

Building Number
509

Drawing Number
AE504

Dwg. 11 of 11

**DONALD J. MITCHELL
VA OUTPATIENT CLINIC**

Department of Veterans Affairs