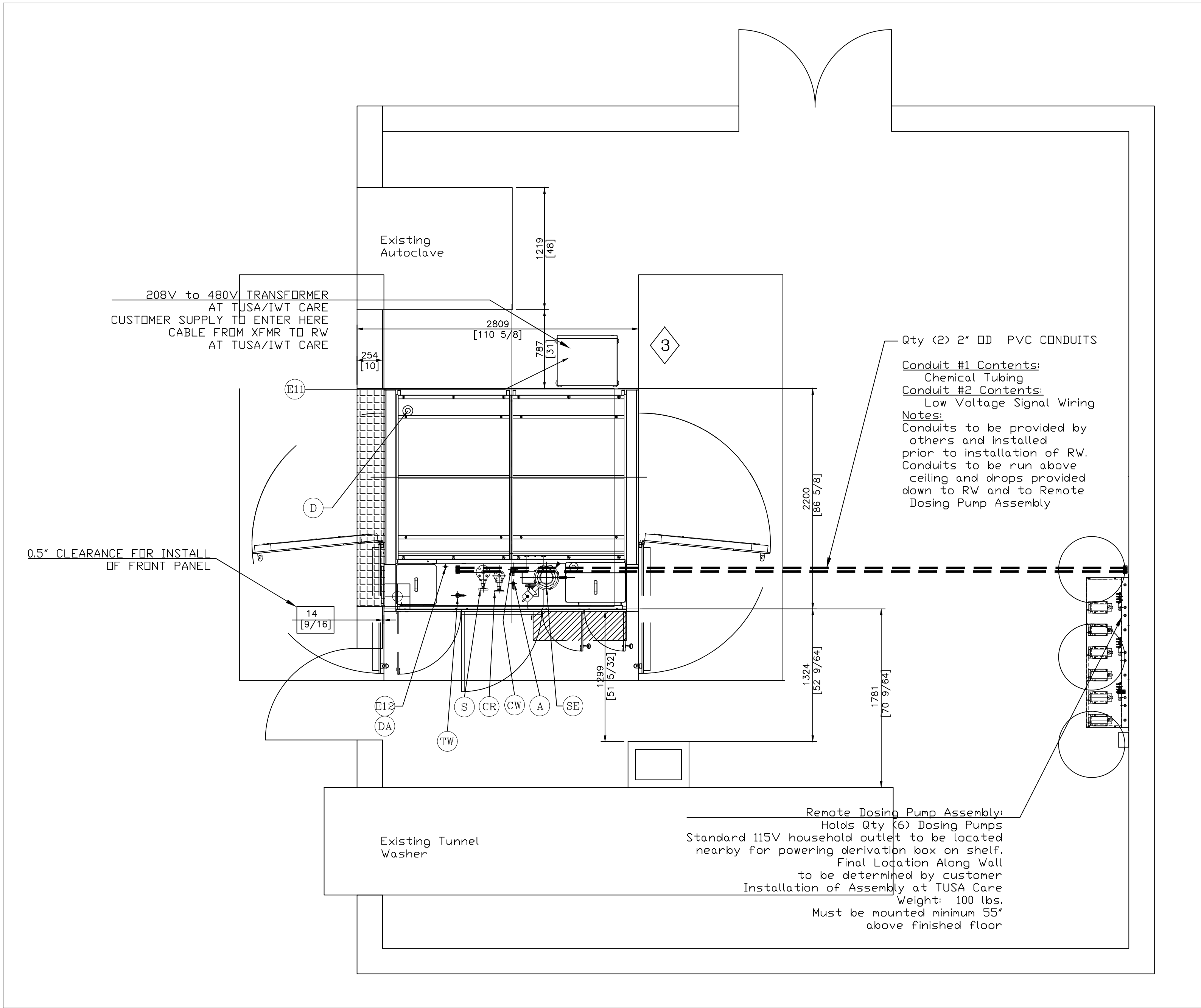


1 EXISTING LAYOUT CONDITIONS  
1.01 SCALE: NTS



2 NEW WASH ROOM LAYOUT  
1.01 SCALE: NTS

Project Notes:

- Room layout based on site survey notes and is schematic in nature. Tecniplast is not responsible for any inaccuracies related to the overall room size and layout.
- All information is based on the existing pit dimensions.
- The VA Palo Alto is responsible for all pit modifications, ceiling modifications, utility relocations, and any fill paneling or fill grating required to complete the installation.

SERVICE TABLE**			
REF	SERVICE	CONNECTION	SERVICE REQUIREMENTS
E11	Electrical supply	⊗ TRANSFORMER	Voltage and frequency: 208 V 60 Hz Type: 3 phases + earth Power required: 13.5 kW Consumption: 0.96 kWh/cycle FLA: 68 A Main switch Value: 50 A Req'd Fusible Disconnect: 110 A
E12	Electrical supply	⊗ Electrical Box	Voltage and frequency: 110 V 60 Hz Type: mono-phase + earth Amperage: 30 A
CW	Cold softened water	1" GAS (°)	Dynamic pressure: 20-44 PSI Supply flow rate min: 951 gallons/h Consumption: 13.2 gallons/cycle Supply temperature: 50-140 °F Max hardness: 150 ppm of CaCO3 The water quality is to be filtered at < 6 microns, and suitable for Autowatering manifold flushing option.
TW	Cold drinking water	3/4" GAS (°)	Dynamic pressure: 20-44 PSI Supply flow rate min: 951 gallons/h Consumption: 1.85 gallons/cycle Supply temperature: 50 °F
D	Drain	8-3 1/2"	Min Flow rate: 1.05 gallons/s
SE	Exhaust	Round bolted flange 80" 3/32"	Max flow rate: 500 CFM Static pressure: 700 Pa Max ductwork resistance: 350 Pa Building exhaust to be balanced to 500 CFM with the rack washer exhaust fan operating at full power
A	Compressed air	1/2" GAS (°)	Dynamic pressure: 87 PSI Min flow rate: 9.84 gallons/min at 87 PSI Consumption: 6.7 gallons/cycle at 87 PSI
S	Steam	DN 32 PN 16 (°)	Pressure range: 44-72 PSI Min flow rate: 330 lbs/h Consumption: 22 lbs/cycle
CR	Condense return	DN 20 PN 16 (°)	Consumption = STEAM Max ductwork resistance up to 14.5 PSI
DA	Data Line	Jack Bernet Static IP Address	Remote monitoring via RealView2 data line


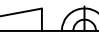
(°) The USA Services Connection Kit takes plus 100 mm (4") extra height above the indicated supply limits

GENERAL NOTES:  
IWT supply limits are clearly shown on the drawing above floor level. All work required to complete the installation beyond the supply limits is by others.  
As any rack washer, the air extracted from the machine will be hot, heavily laden with moisture and will possibly contain residues of weak detergent. The ductwork shall be completely waterproof to withstand the high temperature (rise water temperature is 184°F) and drained at any low point.  
The standard IWT steam extract fan will work efficiently up to a maximum ductwork resistance of 345 Pa downstream the fan mouth. A resistance of a greater value will require the installation of a remote fan by others. The overall negative pressure created by the Customer exhaust system must not generate more than -980 Pa inside the chamber.  
If the VHP (H2O2) option is included, the ductwork must be independent from any centralized exhaust duct and airtight. Should the facility design require the washer be connected to a centralized exhaust system, contact the factory for specific exhaust connection requirements.  
The manufacturer reserves the right to make product changes that may not be reflected in the drawing.  
The machine is designed to work properly in a room temperature range from 64.4 °F to 82.4 °F. If the environment is out of this range, the customer is to provide a proper air conditioning system to respect the recommended threshold.  
Noise level is lower than 70 dBA  
Approximate machine heat loss - 4.41kW  
Approximate operating weight - 6614 lbs  
Approximate size of the largest item - 2350 x 9000 x 1500mm x 200 lbs  
Here below size and weight of the package:  
- W1 crate 2050 (L) x 1120 (W) x 2160 (H) x 2176 (lbs) DOORS  
- W1 crate 2050 (L) x 1120 (W) x 2160 (H) x 2446 (lbs) DOORS FRAMES + BASEMENT  
- W1 crate 2010 (L) x 1120 (W) x 2020 (H) x 1500 (lbs)  
- W2 cages 1220 (L) x 830 (W) x 700 (H) x 508 (lbs)  
- W1 cage: 1300 (L) x 1000 (W) x 600 (H) x 440 (lbs) ELECTRICAL CABINET  
Note: steam exhaust height from the floor is the same without VHP (H2O2) option  
\*\* data in the service table refer to the cycle below:  
- wash at 131°F (120s)  
- drying (120s)  
- rinse at 179°F (25s)  
- extraction (90s)

OTHER NOTES:

- DO NOT SCALE DRAWING USE FIGURED DIMENSIONS ONLY.

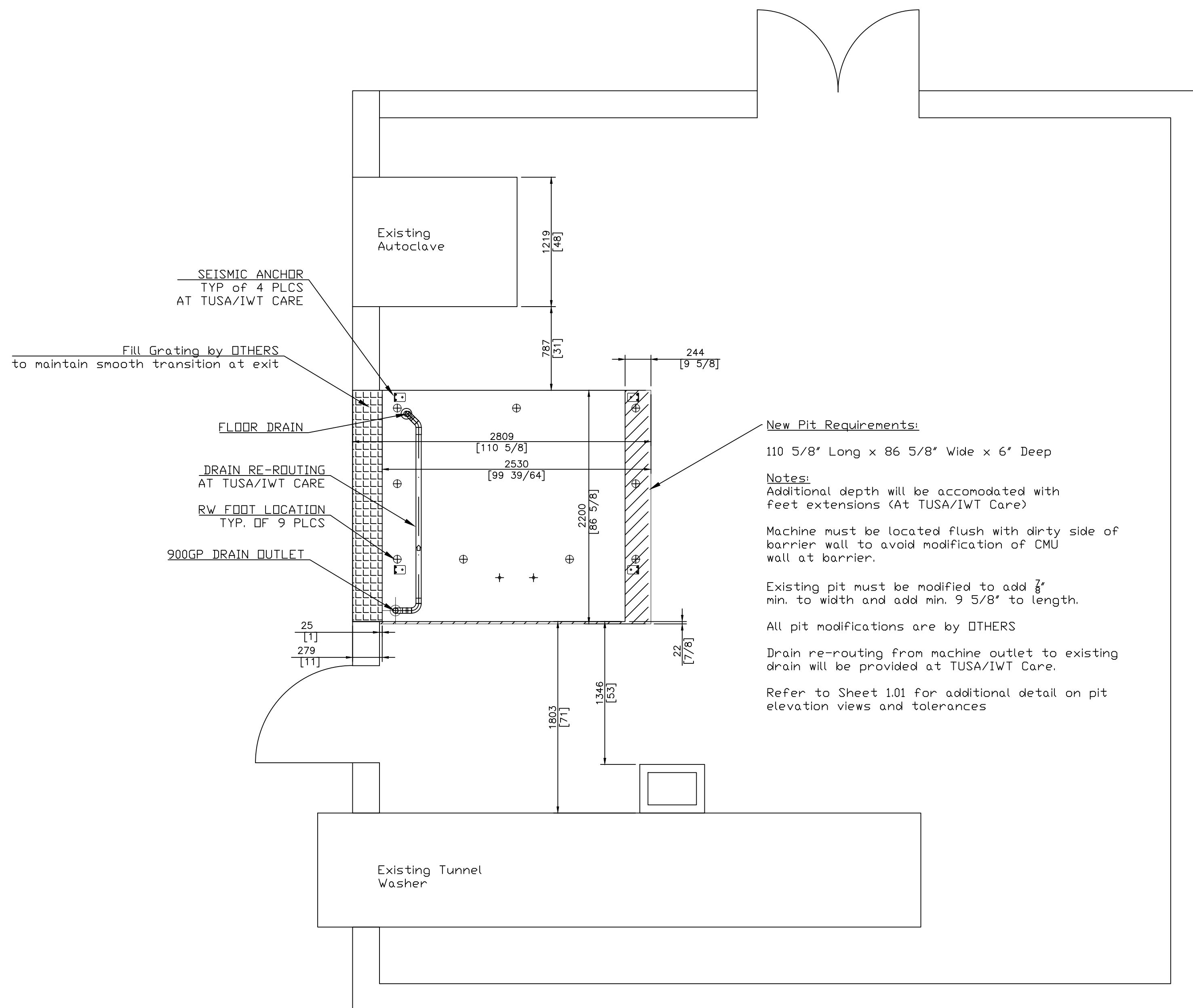
Supply limit Customer Supplier	Dimensions in [mm]	DETAIL NO. SHEET NO.
--------------------------------------	--------------------------	-------------------------

1	1	900GP Rack Washer – Single Tank Steam Heated 208V		9LAVSCV902GP		
POS.	Qty	Description		Code	kg	
		Description		Design: GPL		
		EXISTING AND NEW LAYOUTS		Date 04/09/14		
		Customer		Visa		
		VA Palo Alto		Date		
PO BOX 1457 EXTON PA 19341				Rel. 1	Scale NTS	Sheet 1/5
Draw TUSA14-036-001						
This document is the property of the company and is confidential. It may not be reproduced or shown to a third party without prior authorization from the Company.						
ALL DIMENSIONS ARE GIVEN AS A GUIDE ONLY						
14		Format ARCH D		cm 0 1 2 3 4 5 6 7 8 9		





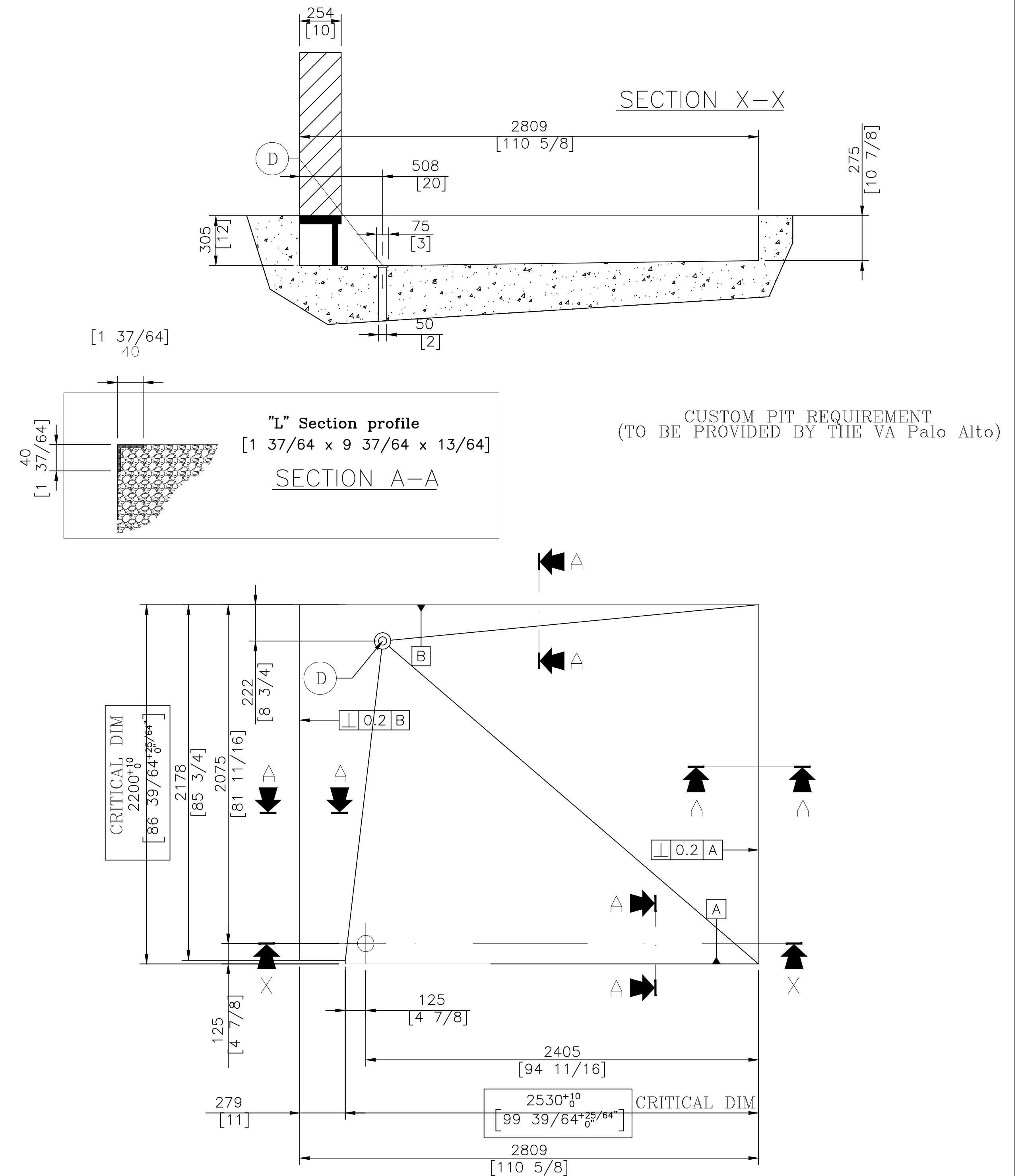
	14	15	16	17
	Rel.	Date	Redraft description	Signature
2	10/24/14	Revised After Order - For Approval		GPL
3	4/02/15	Revised Transformer Requirements		GPL



1 NEW PIT LAYOUT  
1.03 SCALE: NTS

General Notes:



1. Room layout based on site survey notes and is schematic in nature. Tecniplast is not responsible for any inaccuracies related to the overall room size and layout.
2. All information is based on the existing pit dimensions.
3. The VA Palo Alto is responsible for all pit modifications, ceiling modifications, utility relocations, and any fill paneling or fill grating required to complete the installation.



2 PIT DETAILS  
1.03 SCALE: NTS

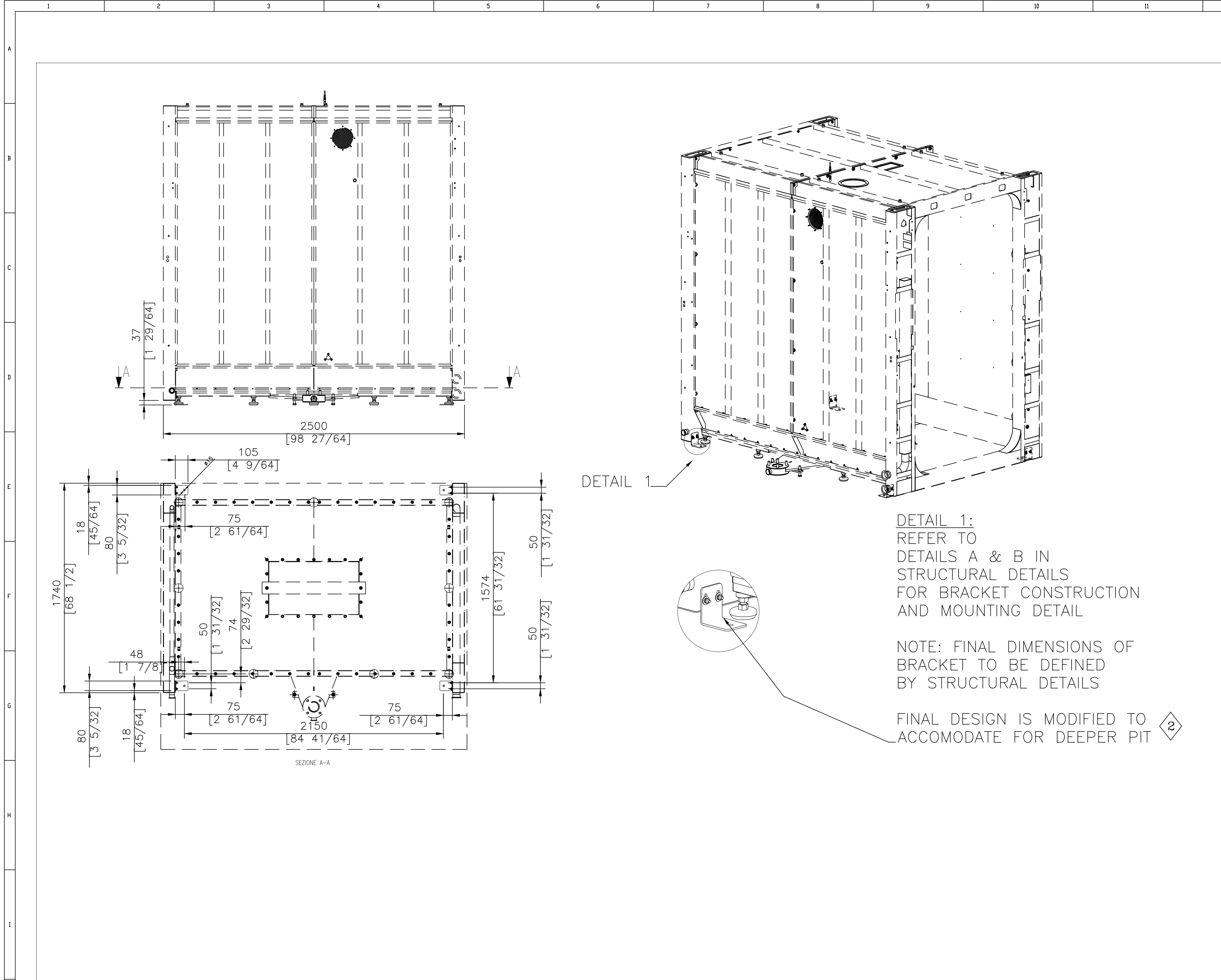
OTHER NOTES:

1. DO NOT SCALE DRAWING USE FIGURED DIMENSIONS ONLY.

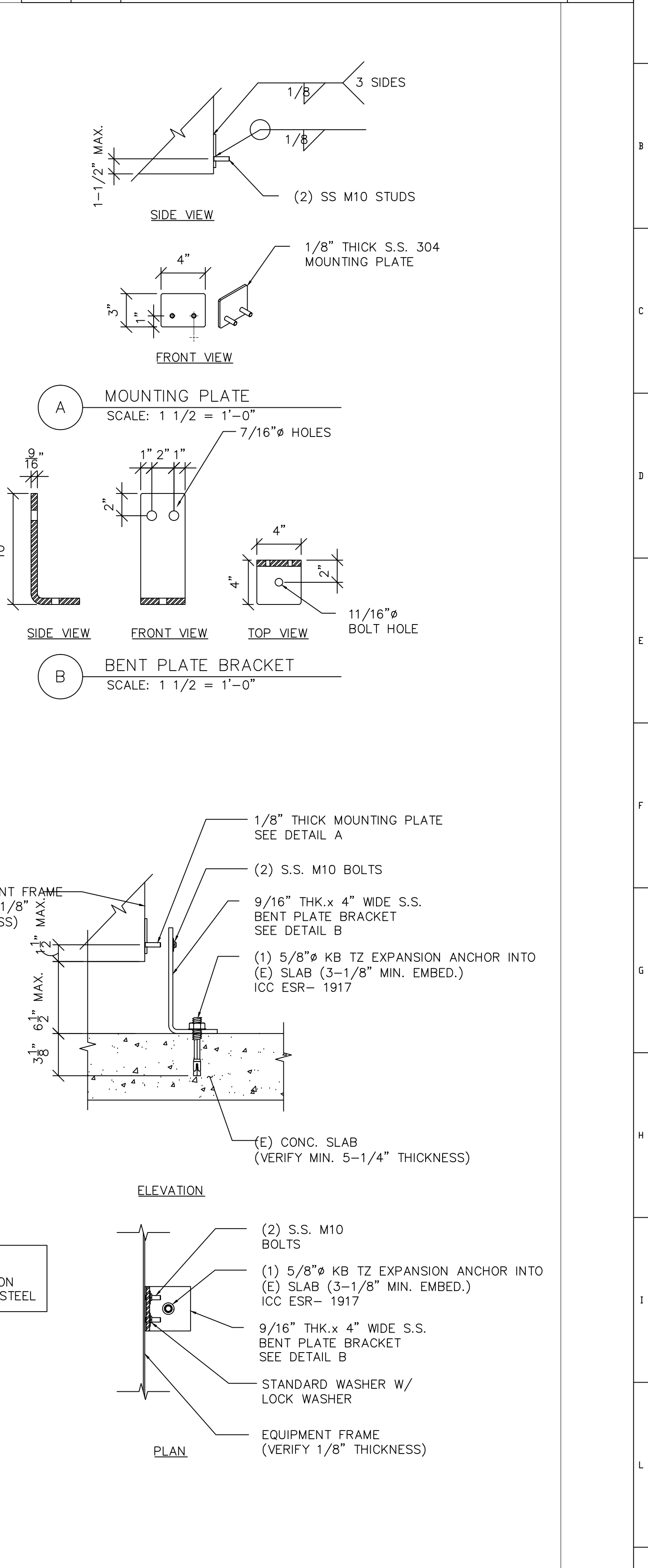
1	1	900GP Rack Washer — Single Tank Steam Heated 208V				9LAVSCV902GP	
PDS.	Q.ty	Description				Code	kg
 <b>TECNIPLAST</b> <i>Innovation through passion™</i>		Description				Design. GPL	
		PIT LAYOUT & DETAILS				Date 04/09/14	
		Customer				Visa	
		VA Palo Alto				Date	
PO BOX 1457 EXTON PA 19341							
This document is the property of the company and is confidential. It may not be reproduced or show it to third parties without prior authorization from the Company. ALL DIMENSIONS ARE GIVEN AS A GUIDE ONLY		 Draw TUSA14-036-003		Rel. 1		Scale NTS	Sheet 3/5
14		FORM ARCH. D		cm		1 2 3 4 5 6 7 8 9 10 11 12	








Rel.	Date	Redraft description	Signature
2	10/24/14	Revised After Order - For Approval	GPL
3	4/02/15	Revised Transformer Requirements	GPL



1	1	900GP Rack Washer — Single Tank Steam Heated 208V	9LAVSCV902GP	
P.O.S.	Q.ty	Description	Code	kg
		SEISMIC ANCHOR DETAILS	Design: GPL	
		Customer: VA Palo Alto	Date: 04/09/14	
		Draw: TUSA14-036-005	Rel: 1	Scale: NTS
			Sheet: 5/5	

PO BOX 1457  
EXTON PA 19341

This document is the property of the company and is confidential. It may not be reproduced or shown to a third party without prior authorization from the Company.

ALL DIMENSIONS ARE GIVEN AS A GUIDE ONLY

Format: ARCH D

cm 1 2 3 4 5 6 7 8 9