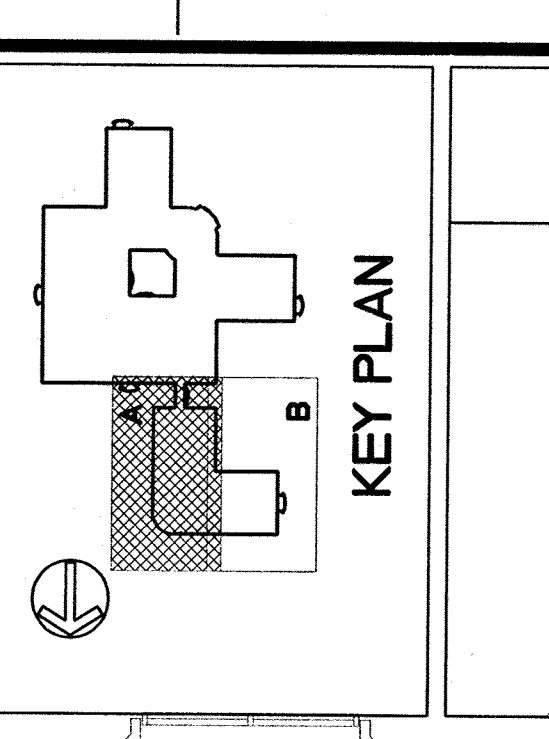


ARCHITECT
The Raciliff Architects
 8888 Boye Street
 Emeryville, CA 94608
 P.O. Box 1022
 San Francisco, CA 94110
 (415) 652-1972

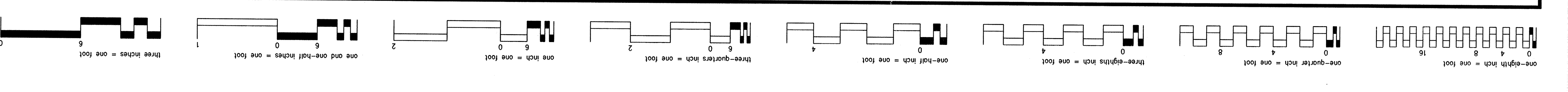
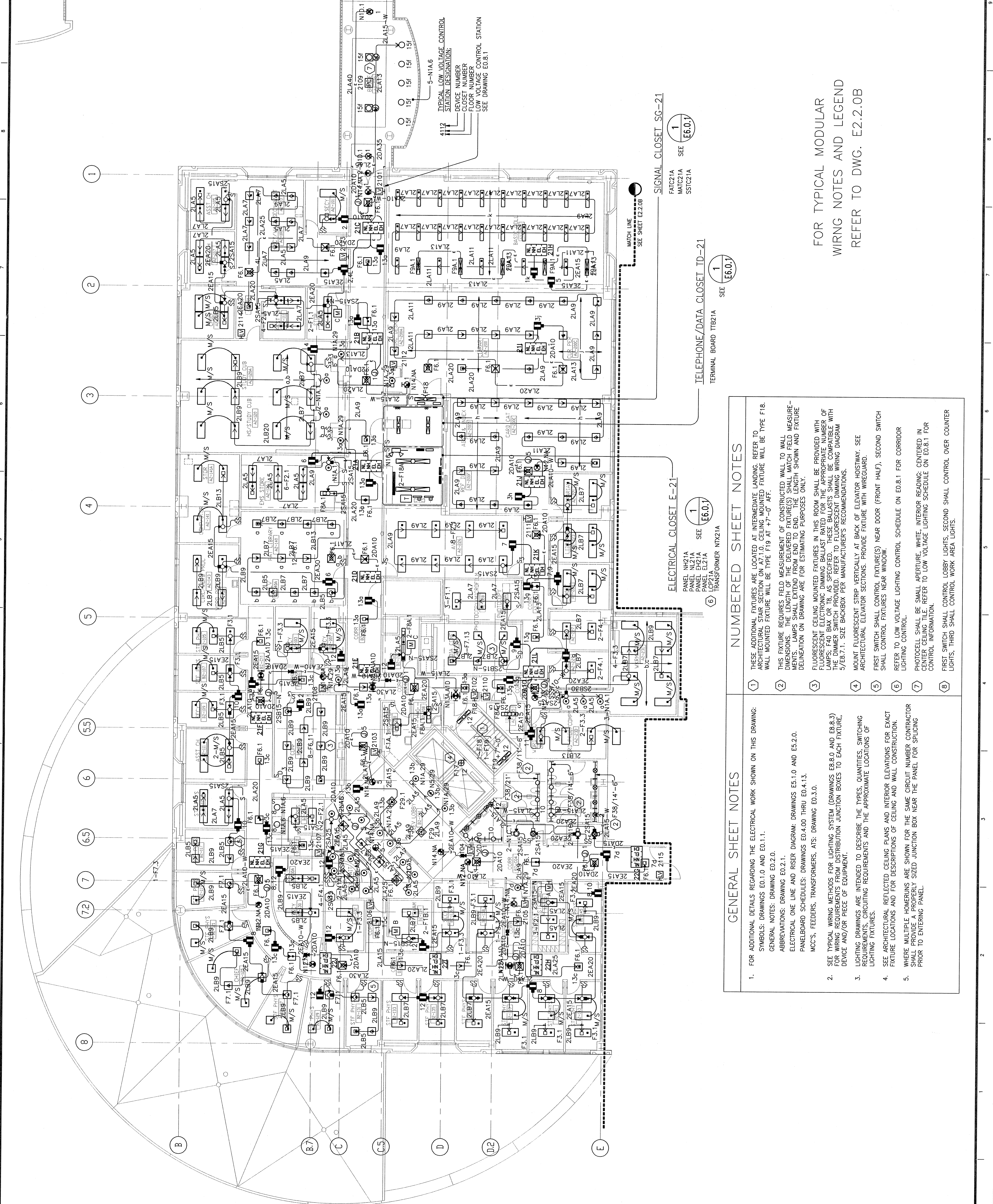
ASSOCIATE ARCHITECT
Stone, Marracchi and Patterson
 One Market Plaza, Suite 400
 San Francisco, CA 94105
 (415) 227-0100

CONSULTANTS
Structural Engineers
 H.J. Douglas & Associates
Mechanical Engineers
 Central Engineering Consultants, Inc.
Electrical Engineers
 The Engineering Enterprise
Cost Estimator
 Adamson Associates
Landscape Design/
Land Planning
 Coni Long Associates, Inc.
Civil Engineer
 Soudki and Associates, Inc.
Elevator Consultant
 Syta and Honnany

Fire Protection
 Bob Jensen and Associates
Food Service Consultant
 Cini-Little International, Inc.



RECORD DOCUMENT	Date	06/15/98
Revisions		
Location	VA Medical Center Palo Alto, CA	
Project Title	REPLACE CLINICAL/ BED TOWER FOR SEISMIC CORRECTIONS	
Fully Sprinklered	FULLY SPRINKLERED	
RA Project No.	Checked	Drawn
90026	MAG/PDW	-
Drawing Title	SECOND FLOOR PLAN - AREA A, LIGHTING	
Scale	1/8" = 1'-0"	
VA Project No.	Building Number	DRAWING NO.
640-042G	101	E2.2.0A
Date	02 MAY 1994	



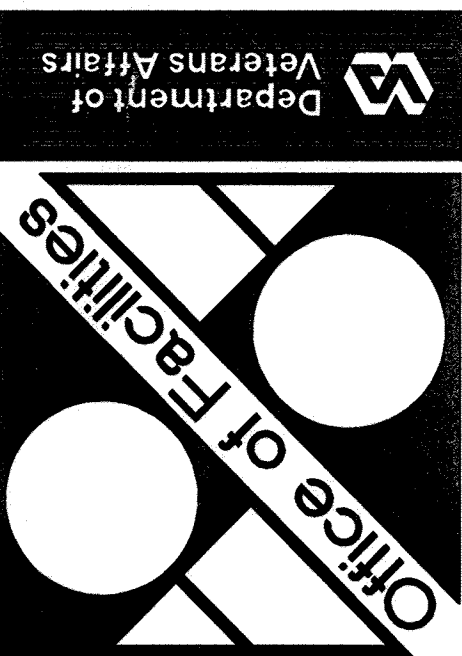
- NUMBERED SHEET NOTES**
- THESE ADDITIONAL FIXTURES ARE LOCATED AT INTERMEDIATE LANDING. REFER TO ARCHITECTURAL STAIR SECTION ON A7.1.0. CEILING MOUNTED FIXTURE WILL BE TYPE F18. WALL MOUNTED FIXTURE WILL BE TYPE F19 AT +7'-0" AFF.
 - THIS FIXTURE REQUIRES FIELD MEASUREMENT OF CONSTRUCTED WALL TO WALL DIMENSIONS. THE LIGHTING FIXTURE(S) SHALL MATCH FIELD MEASUREMENTS. LAMPS SHALL EXTEND FROM END OF FIELD WITH SHOWN AND FIXTURE DELINEATION ON DRAWING ARE FOR ESTIMATING PURPOSES ONLY.
 - FLOURESCENT CEILING MOUNTED FIXTURES IN THIS ROOM SHALL BE PROVIDED WITH FLOURESCENT ELECTRONIC DIMMING BALLAST RATED FOR THE APPROPRIATE NUMBER OF LAMPS: F40 BIAH OR TB, AS SPECIFIED. THESE BALLASTS SHALL BE COMPATIBLE WITH THE DIMMER SWITCH PROVIDED. REFER TO FLOURESCENT DIMMING WIRING DIAGRAM 5/7E.7.1. SIZE BACKBOX PER MANUFACTURER'S RECOMMENDATIONS.
 - MOUNT FLOURESCENT STRIP VERTICALLY AT BACK OF ELEVATOR HOISTWAY. SEE ARCHITECTURAL ELEVATOR SECTIONS. PROVIDE FIXTURE WITH WIREGUARD.
 - FIRST SWITCH SHALL CONTROL FIXTURE(S) NEAR DOOR (FRONT HALF), SECOND SWITCH SHALL CONTROL FIXTURE(S) NEAR WINDOW.
 - REFER TO LOW VOLTAGE LIGHTING CONTROL SCHEDULE ON ED.8.1 FOR CORRIDOR LIGHTING CONTROL.
 - PHOTOCELL SHALL BE SMALL APERTURE WHITE INTERIOR READING; CENTERED IN CENTER CEILING TILE. REFER TO LOW VOLTAGE LIGHTING SCHEDULE ON ED.8.1 FOR CONTROL INFORMATION.
 - FIRST SWITCH SHALL CONTROL LOBBY LIGHTS, SECOND SHALL CONTROL OVER COUNTER LIGHTS, THIRD SHALL CONTROL WORK AREA LIGHTS.
- GENERAL SHEET NOTES**
- FOR ADDITIONAL DETAILS REGARDING THE ELECTRICAL WORK SHOWN ON THIS DRAWING: SYMBOLS: DRAWINGS EO.1.0 AND EO.1.1. GENERAL NOTES: DRAWING EO.2.0. ABBREVIATIONS: DRAWING EO.2.1. ELECTRICAL ONE LINE AND RISER DIAGRAM: DRAWINGS ES.1.0 AND ES.2.0. PANELBOARD SCHEDULES: DRAWINGS EO.4.00 THRU EO.4.13. MCC'S, FEEDERS, TRANSFORMERS, ATS: DRAWING EO.3.0.
 - SEE TYPICAL WIRING METHODS FOR LIGHTING SYSTEM (DRAWINGS EB.8.0 AND EB.8.3) FOR WIRING REQUIREMENTS FROM DISTRIBUTION JUNCTION BOXES TO EACH FIXTURE, DEVICE AND/OR PIECE OF EQUIPMENT.
 - LIGHTING DRAWINGS ARE INTENDED TO DESCRIBE THE TYPES, QUANTITIES, SWITCHING REQUIREMENTS, WIRING REQUIREMENTS AND THE APPROXIMATE LOCATIONS OF LIGHTING FIXTURES.
 - SEE ARCHITECTURAL REFLECTED CEILING PLANS AND INTERIOR ELEVATIONS FOR EXACT FIXTURE LOCATIONS AND FOR DESCRIPTIONS OF CEILING AND WALL CONSTRUCTION.
 - WHERE MULTIPLE HOMERUNS ARE SHOWN FOR THE SAME CIRCUIT NUMBER CONTRACTOR SHALL PROVIDE A PROPERLY SIZED JUNCTION BOX NEAR THE PANEL FOR SPLICING PRIOR TO ENTERING PANEL.

FOR TYPICAL MODULAR WIRING NOTES AND LEGEND REFER TO DWG. E2.2.0B

TELEPHONE/DATA CLOSET ID-21 SEE (E6.0.1)

ELECTRICAL CLOSET E-21 SEE (E6.0.1)

SIGNAL CLOSET SG-21 SEE (E6.0.1)



Department of
Veterans Affairs

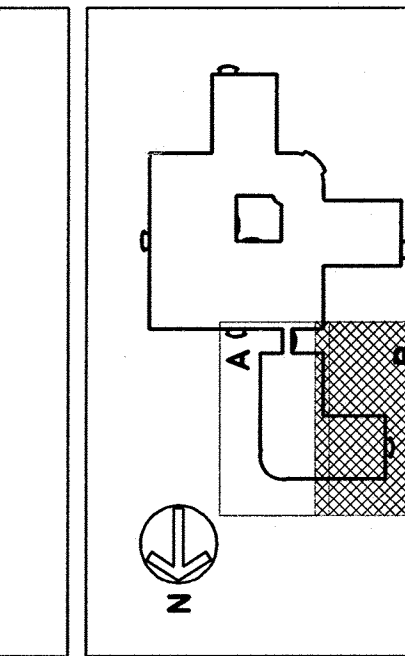
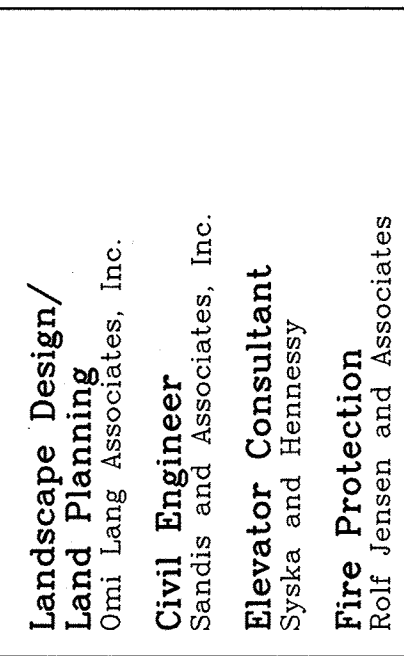
Approved Project Director
Thomas C. Aglin
Western Team Director

ARCHITECT
The Rattliff Architects
Emeryville, CA 94608

P.O. Box 1826
Berkeley, CA 94701
(910) 658-1972

ASSOCIATE ARCHITECT
Stone, Maccacchi and Patterson
One Market Plaza, Suite 400
San Francisco, CA 94105
(415) 227-0100

CONSULTANTS
Structural Engineers
H.J. Deegenkott Associates
Mechanical Engineers
Capital Engineering Consultants, Inc.
Electrical Engineers
The Engineering Enterprise
Cost Estimator
Lobnitz Associates
Landscape Design/
Lobnitz Associates, Inc.
Civil Engineer
Shultz and Associates, Inc.
Elevator Consultant
Shultz and Associates
Fire Protection
Rolf Jensen and Associates
Food Service Consultant
Gard-Latic International, Inc.



KEY PLAN 3

RECORD DOCUMENT
Revision: 06/15/98
Date

Location
VA Medical Center
Falo Alto, CA

Project Title
**REPLACE CLINICAL/
BED TOWER FOR
SEISMIC CORRECTIONS**

FULLY SPRINKLERED

TRK Project No.
90028
Checked
MMG/PDW
Drawn

Drawing Title
**THIRD FLOOR PLAN-
AREA B, LIGHTING**

Scale: 1/8" = 1'-0"

VA Project No.
640-042G
Building
Number
101

Date
02 MAY 1994
DRAWING NO.
E2.3.0B
of

GENERAL SHEET NOTES

- FOR ADDITIONAL DETAILS REGARDING THE ELECTRICAL WORK SHOWN ON THIS DRAWING:
SYMBOLS: DRAWINGS E0.1.0 AND E0.1.1.
GENERAL NOTES: DRAWING E0.2.0.
ABBREVIATIONS: DRAWING E0.2.1.
ELECTRICAL ONE LINE AND RISER DIAGRAM: DRAWINGS E5.1.0 AND E5.2.0.
PANELBOARD SCHEDULES: DRAWINGS E0.4.00 THRU E0.4.13.
MCC'S, FEEDERS, TRANSFORMERS, ATS: DRAWING E0.3.0.
- SEE TYPICAL WIRING METHODS FOR LIGHTING SYSTEM (DRAWINGS E8.8.0 AND E8.8.3) FOR WIRING REQUIREMENTS FROM DISTRIBUTION JUNCTION BOXES TO EACH FIXTURE, DEVICE AND/OR PIECE OF EQUIPMENT.
- LIGHTING DRAWINGS ARE INTENDED TO DESCRIBE THE TYPES, QUANTITIES, SWITCHING REQUIREMENTS, CIRCUITING REQUIREMENTS AND THE APPROXIMATE LOCATIONS OF LIGHTING FIXTURES.
- SEE ARCHITECTURAL REFLECTED CEILING PLANS AND INTERIOR ELEVATIONS FOR EXACT FIXTURE LOCATIONS AND FOR DESCRIPTIONS OF CEILING AND WALL CONSTRUCTION.
- WHERE MULTIPLE HOMERUNS ARE SHOWN FOR THE SAME CIRCUIT NUMBER CONTRACTOR SHALL PROVIDE A PROPERLY SIZED JUNCTION BOX NEAR THE PANEL FOR SPLICING PRIOR TO ENTERING PANEL.

NUMBERED SHEET NOTES

- ALIGN FIXTURE WITH F18 AT OPPOSITE WALL.
- REFER TO LOW VOLTAGE LIGHTING CONTROL SCHEDULE ON E0.8.1 FOR CORRIDOR LIGHTING CONTROL.
- FLOUORESCENT CEILING MOUNTED FIXTURES IN THIS ROOM SHALL BE PROVIDED WITH FLOUORESCENT ELECTRONIC DIMMING BALLAST RATED FOR THE APPROPRIATE NUMBER OF LAMPS: F40 BAY OR T8 AS SPECIFIED. THESE BALLASTS SHALL BE COMPATIBLE WITH THE DIMMER SWITCH PROVIDED. REFER TO FLOUORESCENT DIMMING WIRING DIAGRAM 5/E8.7.1. SIZE BACKBOX PER MANUFACTURER'S RECOMMENDATIONS.

MODULAR WIRING NOTES

- UNMARKED MODULAR WIRING COMPONENTS ARE AS FOLLOWED U.O.N.:
EXTENDER CABLES: 2EA10
SWITCH MODULES: 2SB15
TERMINATORS: 2LB0
SPLITTERS: 2SP8
ALL LOW VOLTAGE WIRING TO BE HARDWIRED BY THE E.C.
IN AREAS WHERE MULTI-LEVEL SWITCHING OCCURS AND 3-WIRE + GROUND CABLE IS USED (i.e. 2LB7), BROWN LEAD CONTROLS OUTBOARD LAMPS AND YELLOW LEAD CONTROLS INBOARD LAMPS.
WHERE SUFFIX '-N' IS USED ON SWITCH MODULE CATALOG NUMBERS, IT INDICATES A NEUTRAL WIRE IS PRESENT IN THE WHIP-END.
ALL MODULAR WIRING COMPONENTS, LOCATED IN THE PATIENT BEDROOMS ONLY, HAVE BEEN PROVIDED WITH THE NEUTRAL WIRE. CONTRACTOR SHALL VERIFY THIS INFORMATION ON THE ABOVE SPECIFIED CABLE TYPE. CONTACT AMERICA CABLE SYSTEMS 100 RIVERSIDE AVENUE NEW BEDFORD, MA 02746 TEL. # (508) 993-1781 FAX # (508) 992-4642

MODULAR WIRING LEGEND

SYMBOL	DESCRIPTION
▲	DISTRIBUTION CABLE (EXAMPLE: 2DA10)
■	EXTENDER CABLE (EXAMPLE: 2EA15)
→	LIGHTING CABLE (EXAMPLE: 2LB9)
▬	EXTENDER WHIP (EXAMPLE: 1EB25-W)
○	SWITCH MODULE (EXAMPLE: 2SA15)
□	TERMINATOR (EXAMPLE: 2LB0)
⊗	DISTRIBUTION TERMINATOR (EXAMPLE: 1DB0)
●	SPLITTER (EXAMPLE: 2SP8)
▬▬	DISTRIBUTION FACE PLATE (3 CONNECTORS CAT. #Z0PA3-2 - NORMAL POWER) (2 CONNECTORS CAT. #Z0PA2-2 - EMERGENCY POWER)

