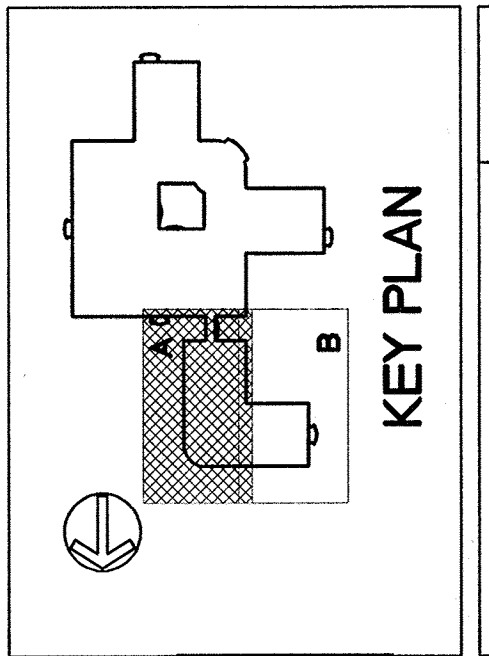


Approved Project Director
James C. Aglin
 Western Team Director

ARCHITECT
 The Ratcliff Architects
 8868 Boyle Street
 Emeryville, CA 94608
 P.O. Box 1022
 Emeryville, CA 94609
 (415) 652-4471
 (415) 652-4474

ASSOCIATE ARCHITECT
 Stone, Marracchi and Patterson
 One Market Plaza
 Suite 400
 San Francisco, CA 94105
 (415) 227-0100

CONSULTANTS
Structural Engineers
 HNTB Associates
Mechanical Engineers
 Capital Engineering Consultants, Inc.
Electrical Engineers
 The Engineering Enterprise
Cost Estimator
 Adimison Associates
Landscape Design/
Land Planning
 Umit Lang Associates, Inc.
Civil Engineer
 Souda and Associates, Inc.
Elevator Consultant
 Syka and Hennessy
Fire Protection
 Rolf Jensen and Associates
Food Service Consultant
 Cni-Little International, Inc.

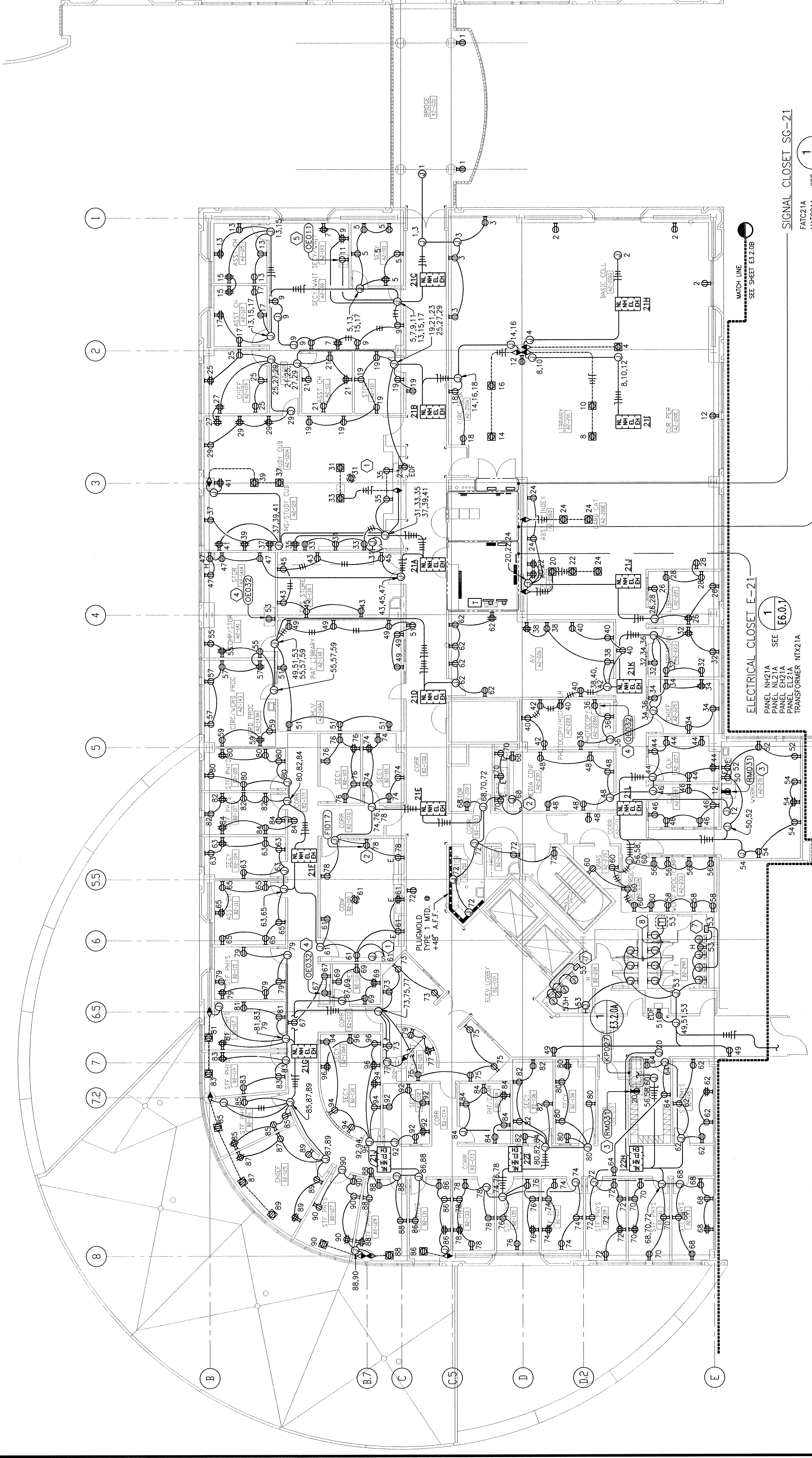


RECORD DOCUMENT	Date	05/15/98
Location	VA Medical Center Palo Alto, CA	

Project Title
**REPLACE CLINICAL/
 BED TOWER FOR
 SEISMIC CORRECTIONS**

TRA Project No. 90026
 Checked MMG/PDW
 Drawn -

Scale: 1/8" = 1'-0"
 VA Project No. 640-045G
 Building Number **101**
 DRAWING NO.
E3.2.0A
 02 MAY 1994



NUMBERED SHEET NOTES

- WALL MOUNTED ELECTRIFIED PROJECTION SCREEN AT CEILING LEVEL WITH REMOTE CONTROL SWITCH (PROVIDED UNDER ANOTHER SECTION). PRIOR TO ELECTRICAL ROUGH-IN, PROVIDE 4" SQUARE BOX AND SINGLE GANG SWITCH RING AT +40" AFF AND 16" AWAY FROM EDGE OF SCREEN. UN, PROVIDE 120 VAC SOURCE INDICATED TO SWITCH BOX. PROVIDE 4 #12 (BLACK, RED, WHITE, GROUND) 120 VAC SOURCE INDICATED TO AND SCREEN. INSULATE REMOTE CONTROL SWITCH AND TERMINATE IN ACCORDANCE WITH MANUFACTURER'S REQUIREMENTS.
- SURFACE MOUNTED FILM ILLUMINATOR. UNIT PLUGS INTO STANDARD WALL OUTLET.
- REFRIGERATOR UNIT (PROVIDED UNDER ANOTHER SECTION). UNIT PLUGS INTO WALL OUTLET ON EMERGENCY POWER.
- COPY MACHINE (PROVIDED UNDER ANOTHER SECTION). UNIT PLUGS INTO STANDARD WALL OUTLET.
- COPY MACHINE (PROVIDED UNDER ANOTHER SECTION). UNIT PLUGS INTO DEDICATED CIRCUIT WALL OUTLET.
- MODULAR KITCHEN UNIT (NEC). FIELD VERIFY UNITS CONSTRUCTION PRIOR TO INSTALLATION OF ELECTRICAL ROUGH-IN. PROVIDE OUTLETS ABOVE COUNTER TOP AS INDICATED ON DRAWINGS. UNDER SINK PROVIDE SURFACE MOUNTED 4 SQUARE BOX AND COMBINATION OUTLET AND SWITCH WITH UNIVERSAL RAISED SURFACE COVER. PROVIDE 20 AMP DUP. SINGLE POLE SWITCH FOR LOCAL DISCONNECT AND HARDWIRE TO CHILLED WATER DISPENSER.
- MULTIPLE LAVATORY WITH ELECTRONIC SENSORS. PROVIDE SENSOR BOX. SENSOR WIRING AND 120 VAC POWER AS INDICATED ON DETAIL 7 ON SHEET P7.1.1.
- URINALS AND WATER CLOSETS WITH ELECTRONIC SENSORS. PROVIDE 120 VAC POWER FOR TRANSFORMER MOUNTED ABOVE CEILING. PROVIDE SENSOR BOX AND LOW VOLTAGE POWER IN CONDUIT FROM TRANSFORMER TO EACH SENSOR AS INDICATED ON DETAIL 7 ON SHEET P7.1.1 FOR URINALS AND DETAIL 9 ON SHEET P7.1.1 FOR WATER CLOSETS.

GENERAL SHEET NOTES

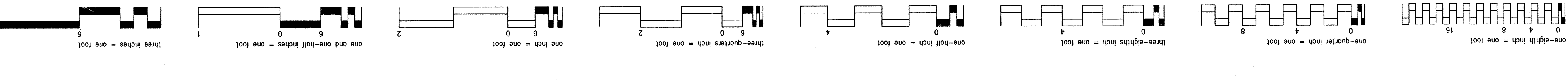
- FOR ADDITIONAL DETAILS REGARDING THE ELECTRICAL WORK SHOWN ON THIS DRAWING:
 SYMBOLS: DRAWINGS E0.1.0 AND E0.1.1.
 GENERAL NOTES: DRAWING E0.2.0.
 ABBREVIATIONS: DRAWING E0.2.1.
 ELECTRICAL ONE LINE AND RISER DIAGRAM: DRAWINGS E5.1.0 AND E5.2.0.
 PANELBOARD SCHEDULES: DRAWINGS E0.4.00 THRU E0.4.13.
 MCC'S, FEEDERS, TRANSFORMERS, ATS: DRAWING E0.3.0.
- SEE TYPICAL WIRING METHODS FOR POWER SYSTEM (DRAWINGS E8.8.1 AND E8.8.3) FOR WIRING REQUIREMENTS FROM DISTRIBUTION JUNCTION BOXES TO EACH DEVICE AND/OR PIECE OF EQUIPMENT.
- THIS SHEET INDICATES APPROXIMATE LOCATION OF EQUIPMENT THAT REQUIRES ELECTRICAL SERVICE CONNECTIONS AS PART OF DIVISION 16.
- DISCONNECT SWITCH LOCATIONS SHOWN ON THIS DRAWING ARE DIAGRAMMATIC. FIELD VERIFY DISCONNECT LOCATION AND COORDINATE WITH THE ACTUAL EQUIPMENT TO BE INSTALLED AND TO PROVIDE CODE CLEARANCES.
- FIELD VERIFY LAYOUT, VOLTAGES, ELECTRICAL SERVICE SIZE AND FUSE SIZES FOR EQUIPMENT FURNISHED BY OTHER DIVISIONS PRIOR TO ROUGH-IN.
- FOR SIZES OF CONDUITS AND CONDUCTORS FOR MOTOR CONTROL CENTERS, SEE MCC SCHEDULE, DRAWING E0.3.0.
- REFER TO ARCHITECTURAL PLANS FOR DIMENSIONAL REQUIREMENTS OF FLUSH FLOOR OR FLUSH CEILING OUTLET DEVICES.

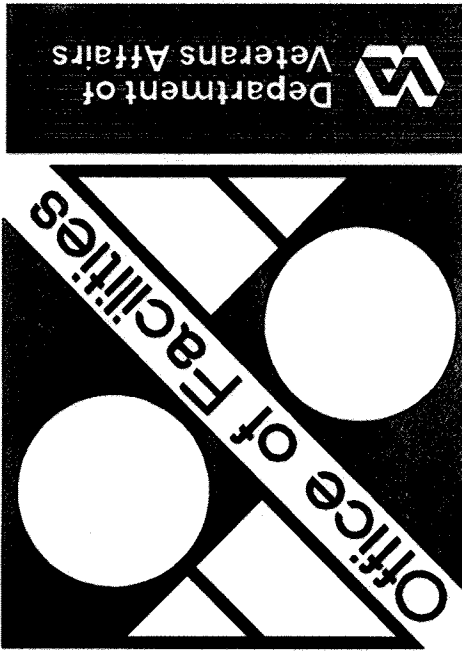
GENERAL SHEET NOTES

- FOR ADDITIONAL DETAILS REGARDING THE ELECTRICAL WORK SHOWN ON THIS DRAWING:
 SYMBOLS: DRAWINGS E0.1.0 AND E0.1.1.
 GENERAL NOTES: DRAWING E0.2.0.
 ABBREVIATIONS: DRAWING E0.2.1.
 ELECTRICAL ONE LINE AND RISER DIAGRAM: DRAWINGS E5.1.0 AND E5.2.0.
 PANELBOARD SCHEDULES: DRAWINGS E0.4.00 THRU E0.4.13.
 MCC'S, FEEDERS, TRANSFORMERS, ATS: DRAWING E0.3.0.
- SEE TYPICAL WIRING METHODS FOR POWER SYSTEM (DRAWINGS E8.8.1 AND E8.8.3) FOR WIRING REQUIREMENTS FROM DISTRIBUTION JUNCTION BOXES TO EACH DEVICE AND/OR PIECE OF EQUIPMENT.
- THIS SHEET INDICATES APPROXIMATE LOCATION OF EQUIPMENT THAT REQUIRES ELECTRICAL SERVICE CONNECTIONS AS PART OF DIVISION 16.
- DISCONNECT SWITCH LOCATIONS SHOWN ON THIS DRAWING ARE DIAGRAMMATIC. FIELD VERIFY DISCONNECT LOCATION AND COORDINATE WITH THE ACTUAL EQUIPMENT TO BE INSTALLED AND TO PROVIDE CODE CLEARANCES.
- FIELD VERIFY LAYOUT, VOLTAGES, ELECTRICAL SERVICE SIZE AND FUSE SIZES FOR EQUIPMENT FURNISHED BY OTHER DIVISIONS PRIOR TO ROUGH-IN.
- FOR SIZES OF CONDUITS AND CONDUCTORS FOR MOTOR CONTROL CENTERS, SEE MCC SCHEDULE, DRAWING E0.3.0.
- REFER TO ARCHITECTURAL PLANS FOR DIMENSIONAL REQUIREMENTS OF FLUSH FLOOR OR FLUSH CEILING OUTLET DEVICES.

GENERAL SHEET NOTES

- FOR ADDITIONAL DETAILS REGARDING THE ELECTRICAL WORK SHOWN ON THIS DRAWING:
 SYMBOLS: DRAWINGS E0.1.0 AND E0.1.1.
 GENERAL NOTES: DRAWING E0.2.0.
 ABBREVIATIONS: DRAWING E0.2.1.
 ELECTRICAL ONE LINE AND RISER DIAGRAM: DRAWINGS E5.1.0 AND E5.2.0.
 PANELBOARD SCHEDULES: DRAWINGS E0.4.00 THRU E0.4.13.
 MCC'S, FEEDERS, TRANSFORMERS, ATS: DRAWING E0.3.0.
- SEE TYPICAL WIRING METHODS FOR POWER SYSTEM (DRAWINGS E8.8.1 AND E8.8.3) FOR WIRING REQUIREMENTS FROM DISTRIBUTION JUNCTION BOXES TO EACH DEVICE AND/OR PIECE OF EQUIPMENT.
- THIS SHEET INDICATES APPROXIMATE LOCATION OF EQUIPMENT THAT REQUIRES ELECTRICAL SERVICE CONNECTIONS AS PART OF DIVISION 16.
- DISCONNECT SWITCH LOCATIONS SHOWN ON THIS DRAWING ARE DIAGRAMMATIC. FIELD VERIFY DISCONNECT LOCATION AND COORDINATE WITH THE ACTUAL EQUIPMENT TO BE INSTALLED AND TO PROVIDE CODE CLEARANCES.
- FIELD VERIFY LAYOUT, VOLTAGES, ELECTRICAL SERVICE SIZE AND FUSE SIZES FOR EQUIPMENT FURNISHED BY OTHER DIVISIONS PRIOR TO ROUGH-IN.
- FOR SIZES OF CONDUITS AND CONDUCTORS FOR MOTOR CONTROL CENTERS, SEE MCC SCHEDULE, DRAWING E0.3.0.
- REFER TO ARCHITECTURAL PLANS FOR DIMENSIONAL REQUIREMENTS OF FLUSH FLOOR OR FLUSH CEILING OUTLET DEVICES.





Approved Project Director
John C. Griffin
 Western Team Director

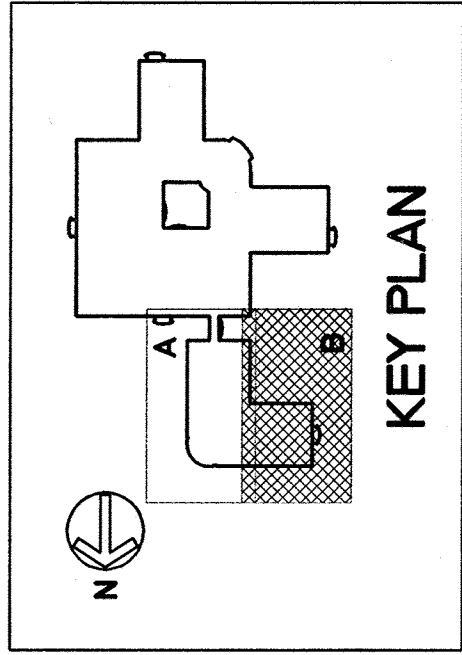
ARCHITECT
The Reichl Architects
 8856 Doyle Street
 Emeryville, CA 94608
 P.O. Box 1022
 Berkeley, CA 94701
 (510) 484-1974

ASSOCIATE ARCHITECT
Stone, Marracchini and Patterson
 One Market Plaza
 San Francisco, CA 94105
 (415) 227-0100

CONSULTANTS
Structural Engineers
 IRI Leggett Associates
Mechanical Engineers
 Capital Engineering Consultants, Inc.
Electrical Engineers
 The Engineering Enterprise
Cost Estimator
 Adamson Associates
Landscaping Design/Land Planning
 Gant Lang Associates, Inc.

Civil Engineer
 Shadis and Associates, Inc.
Elevator Consultant
 Syska and Hennessy
Fire Protection
 Roof Jensen and Associates
Food Service Consultant
 Cui-Little International, Inc.

THE ENGINEERING ENTERPRISE
 THE POWER HOUSE COMPANY
 1400 CALIFORNIA STREET
 ALBANY, CA 94706
 (510) 789-7620



RECORD DOCUMENT	06/15/98
Revisions	Date
Location VA Medical Center Palo Alto, CA	

Project Title
**REPLACE CLINICAL/
 BED TOWER FOR
 SEISMIC CORRECTIONS**

TRA Project No. 80026
 Checked MMG/PDW
 Drawn

Drawing Title
**THIRD FLOOR PLAN -
 AREA B, POWER**

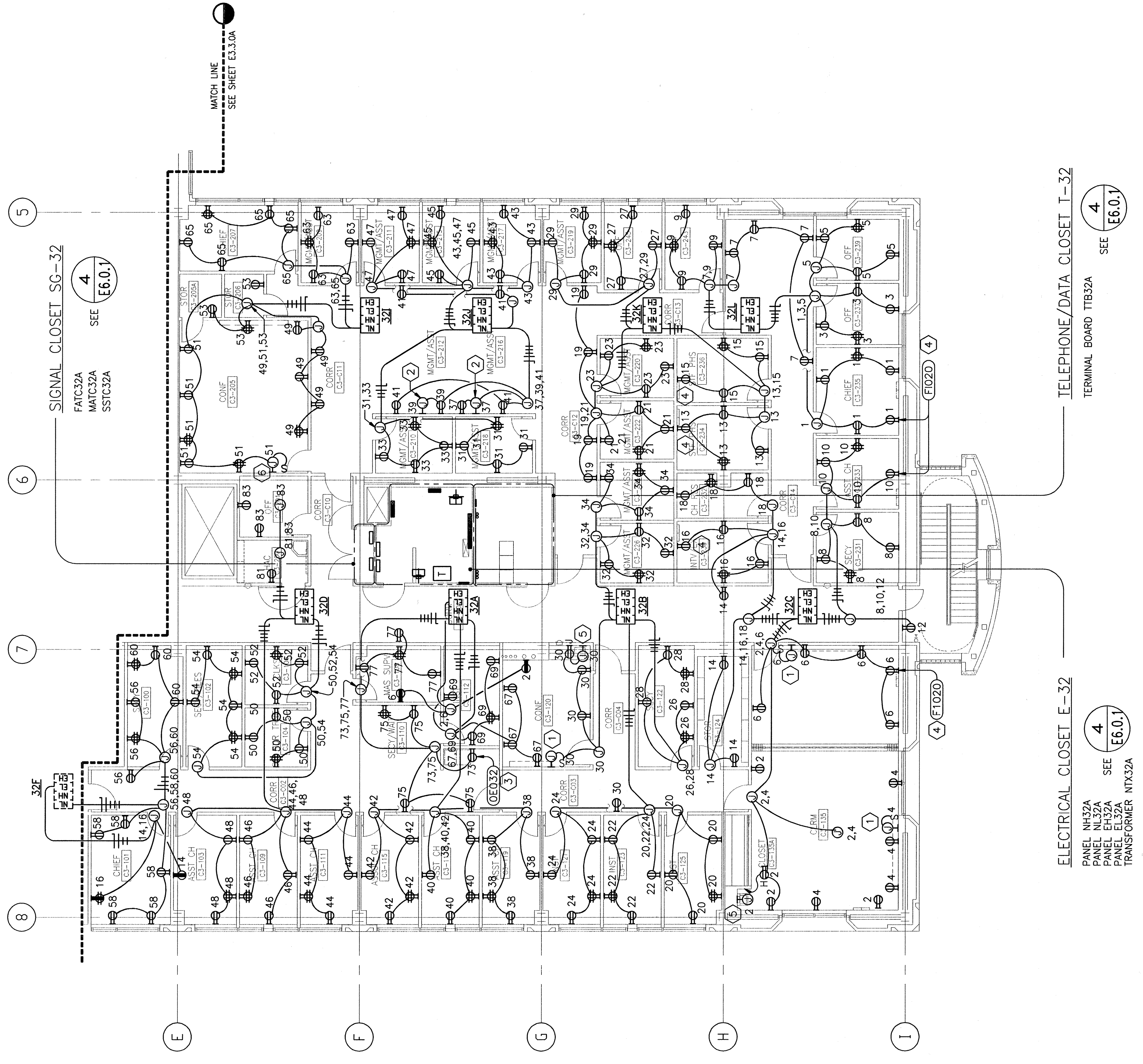
Scale: 1/8" = 1'-0"
 VA Project No. 640-042G
 Building Number **101**
 Date 02 MAY 1994
 DRAWING NO. **E3.3.0B**

GENERAL SHEET NOTES

- FOR ADDITIONAL DETAILS REGARDING THE ELECTRICAL WORK SHOWN ON THIS DRAWING:
 SYMBOLS: DRAWINGS E0.1.0 AND E0.1.1.
 GENERAL NOTES: DRAWING E0.2.0.
 ABBREVIATIONS: DRAWING E0.2.1.
 ELECTRICAL ONE LINE AND RISER DIAGRAM: DRAWINGS E5.1.0 AND E5.2.0.
 PANELBOARD SCHEDULES: DRAWINGS E0.4.00 THRU E0.4.13.
 MCC'S, FEEDERS, TRANSFORMERS, ATS: DRAWING E0.3.0.
- SEE TYPICAL WIRING METHODS FOR POWER SYSTEM (DRAWINGS E6.8.1 AND E6.8.3) FOR WIRING REQUIREMENTS FROM DISTRIBUTION JUNCTION BOXES TO EACH DEVICE AND/OR PIECE OF EQUIPMENT.
- THIS SHEET INDICATES APPROXIMATE LOCATION OF EQUIPMENT THAT REQUIRES ELECTRICAL SERVICE CONNECTIONS AS PART OF DIVISION 16.
- DISCONNECT SWITCH LOCATIONS SHOWN ON THIS DRAWING ARE DIAGRAMMATIC. FIELD VERIFY DISCONNECT LOCATION AND COORDINATE WITH THE ACTUAL EQUIPMENT TO BE INSTALLED AND TO PROVIDE CODE CLEARANCES.
- FIELD VERIFY LAYOUT, VOLTAGES, ELECTRICAL SERVICE SIZE AND FUSE SIZES FOR EQUIPMENT FURNISHED BY OTHER DIVISIONS PRIOR TO ROUGH-IN.
- FOR SIZES OF CONDUITS AND CONDUCTORS FOR MOTOR CONTROL CENTERS, SEE MCC SCHEDULE, DRAWING E0.3.0.
- REFER TO ARCHITECTURAL PLANS FOR DIMENSIONAL REQUIREMENTS OF FLUSH FLOOR OR FLUSH CEILING OUTLET DEVICES.

NUMBERED SHEET NOTES

- MODULAR KITCHEN UNIT (PROVIDED UNDER ANOTHER SECTION). FIELD VERIFY UNITS CONSTRUCTION PRIOR TO INSTALLATION OF ELECTRICAL. PROVIDE OUTLET ABOVE COUNTER TOP AS INDICATED ON DRAWINGS. UNDER SWITCH PROVIDE SURFACE MOUNTED 4" SQUARE BOX AND COMBINATION OUTLET AND SWITCH WITH UNIVERSAL RAISED SURFACE COVER. PROVIDE 20 AMP DUPLEX RECEPTACLE FOR AN INSTANT HOT WATER DISPENSER. PROVIDE 20 AMP SINGLE POLE SWITCH FOR LOCAL DISCONNECT AND HARDWARE TO CHILLED WATER DISPENSER.
- OUTLET BOX FOR MODULAR FURNITURE (PROVIDED UNDER ANOTHER SECTION) MOUNTED 4" AFF. PROVIDE CIRCUITS AS SHOWN AND MAKE FINAL CONNECTIONS TO MODULAR FURNITURE.
- COPY MACHINE (PROVIDED UNDER ANOTHER SECTION). UNIT PLUGS INTO STANDARD WALL OUTLET.
- SURFACE MOUNTED FILM ILLUMINATOR. UNIT PLUGS INTO STANDARD WALL OUTLET.
- INDIVIDUAL LAVATORY WITH ELECTRONIC SENSOR. PROVIDE SENSOR BOX. SENSOR WIRING AND 120 VAC POWER AS INDICATED ON DETAIL 11 ON SHEET P7.1.1.
- WALL MOUNTED ELECTRIFIED PROTECTION SCREEN AT CEILING LEVEL WITH REMOTE CONTROL SWITCH (PROVIDED UNDER ANOTHER SECTION). PRIOR TO ELECTRICAL ROUGHIN, PROVIDE 4" SQUARE BOX AND SINGLE GANG SWITCH RING AT +40" AFF AND 16" AWAY FROM EDGE OF SCREEN. U.O.N. PROVIDE 120 VAC SOURCE INDICATED TO SWITCH BOX. PROVIDE #412 (BLACK, RED, WHITE, GROUND) BETWEEN SWITCH BOX AND SCREEN. INSTALL REMOTE CONTROL SWITCH AND TERMINATE IN ACCORDANCE WITH MANUFACTURER'S REQUIREMENTS.



SIGNAL CLOSET SG-32
 FATC32A
 MATC32A
 SSTC32A
 SEE E6.0.1

ELECTRICAL CLOSET E-32
 PANEL NH32A
 PANEL NL32A
 PANEL EH32A
 TRANSFORMER NTX32A
 SEE E6.0.1

TELEPHONE/DATA CLOSET T-32
 TERMINAL BOARD ITB32A
 SEE E6.0.1

