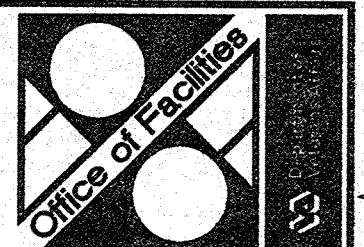


three-eighths inch = one foot  
 one-eighth inch = one foot  
 one-quarter inch = one foot  
 one-half inch = one foot  
 three-quarters inch = one foot  
 one inch = one foot  
 one and one-half inches = one foot  
 two inches = one foot  
 three inches = one foot  
 four inches = one foot  
 six inches = one foot  
 eight inches = one foot  
 ten inches = one foot  
 twelve inches = one foot  
 one foot = one foot  
 one and one-half feet = one foot  
 two feet = one foot  
 three feet = one foot  
 four feet = one foot  
 five feet = one foot  
 six feet = one foot  
 seven feet = one foot  
 eight feet = one foot  
 nine feet = one foot  
 ten feet = one foot  
 eleven feet = one foot  
 twelve feet = one foot  
 one yard = one foot  
 one and one-half yards = one foot  
 two yards = one foot  
 three yards = one foot  
 four yards = one foot  
 five yards = one foot  
 six yards = one foot  
 seven yards = one foot  
 eight yards = one foot  
 nine yards = one foot  
 ten yards = one foot  
 eleven yards = one foot  
 twelve yards = one foot  
 one mile = one foot  
 one and one-half miles = one foot  
 two miles = one foot  
 three miles = one foot  
 four miles = one foot  
 five miles = one foot  
 six miles = one foot  
 seven miles = one foot  
 eight miles = one foot  
 nine miles = one foot  
 ten miles = one foot  
 eleven miles = one foot  
 twelve miles = one foot

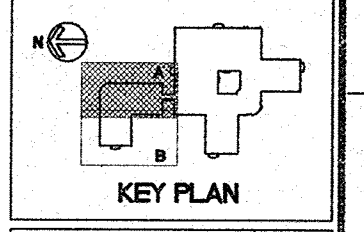
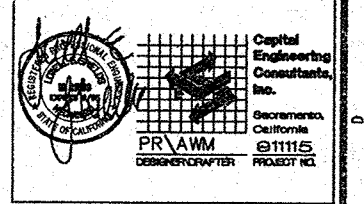


**Office of Facilities**  
 Western Team Director  
 Approved Project Director

**ARCHITECT**  
 The Ratcliff Architects  
 5858 Doyle Street  
 Emeryville, CA 94608  
 P.O. Box 1028  
 Berkeley, CA 94701  
 (510) 858-1972

**ASSOCIATE ARCHITECT**  
 Stone, Maccarini and Patterson  
 One Market Plaza  
 Spear Street Tower, Suite 400  
 San Francisco, CA 94105  
 (415) 227-0100

**CONSULTANTS**  
 Structural Engineers  
 E.L. Degenkolb Associates  
 Mechanical Engineers  
 Capital Engineering Consultants, Inc.  
 Electrical Engineers  
 The Engineering Enterprise  
 Cost Estimator  
 Adamson Associates  
 Landscape Design/  
 Land Planning  
 Omni Lang Associates, Inc.  
 Civil Engineer  
 Sands and Associates, Inc.  
 Elevator Consultant  
 Syka and Hennesey  
 Fire Protection  
 Rolf Jensen and Associates  
 Food Service Consultant  
 Chai-Little International, Inc.



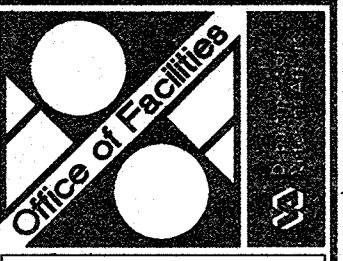
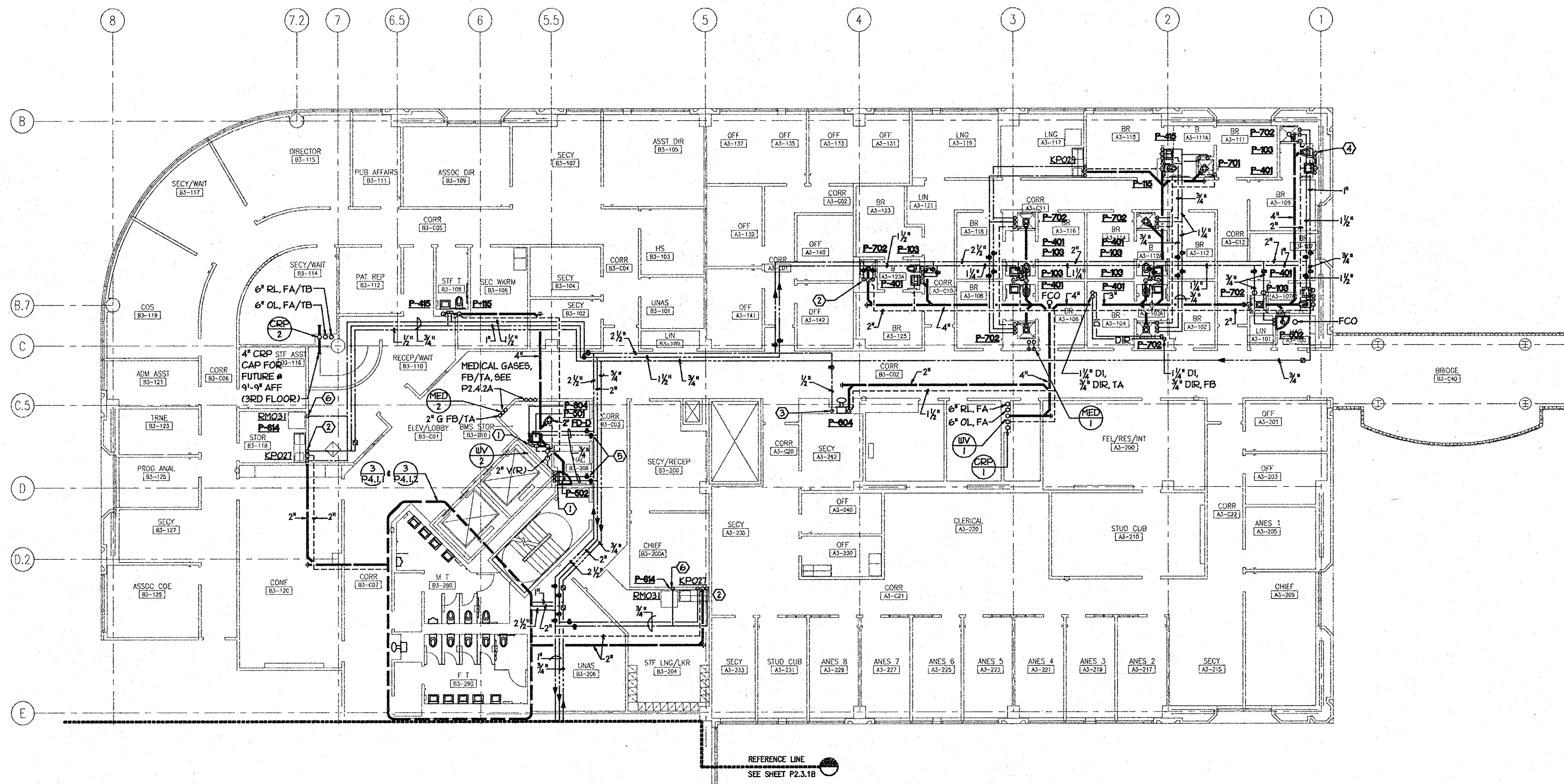
Revisions \_\_\_\_\_ Date \_\_\_\_\_  
 Location  
**VA Medical Center  
 Palo Alto, CA**  
 Project Title  
**REPLACE CLINICAL/  
 BED TOWER FOR  
 SEISMIC CORRECTIONS**  
**FULLY SPRINKLERED**

TRA Project No.	Checked	Drawn
93007	TGJ	AWM
Drawing Title	SECOND FLOOR PLAN, AREA A - PLUMBING, MEDICAL & LABORATORY GAS & VACUUM PIPING	
Scale	1/8" = 1'-0"	
VA Project No.	Building Number	101
Date	2 MAY 1994	
Drawing No.	P2.2.1A	
Day	of	

- SHEET NOTES:**
- ① 3/4" HMCW, 2" W, 2" V, OFFSET 2"W IN WALL
  - ② 3/4" HMCW, 3" W, 2" V
  - ③ CONTINUED ON SHEET 100-P2.2.2C, SEISMIC JOINT PER 1, 2, 3/P1.1.2.
  - ④ LOCATE VALVE IN CORRIDOR ABOVE CEILING.
  - ⑤ 1/2" CW TO ICE MAKER WALL BOX

\*FOR BASIC FIRE PROTECTION DIAGRAMS, SEE FIRE PROTECTION PLANS, FP PREFIX DRAWINGS. FOR SPECIFIC PARTITION TYPES SEE ARCHITECTURAL DIMENSION PLANS.\*

three-eighths inch = one foot  
 one-quarter inch = one foot  
 one-eighth inch = one foot  
 one-half inch = one foot  
 one inch = one foot  
 one and one-half inches = one foot  
 two inches = one foot  
 three inches = one foot  
 four inches = one foot  
 five inches = one foot  
 six inches = one foot  
 seven inches = one foot  
 eight inches = one foot  
 nine inches = one foot  
 ten inches = one foot  
 eleven inches = one foot  
 twelve inches = one foot



**Yves Caplan**  
 Western Team Director  
 Approved Project Director

**ARCHITECT**  
 The Ratliff Architects  
 5556 Doyle Street  
 Emeryville, CA 94608  
 P.O. Box 1028  
 Berkeley, CA 94701  
 (510) 682-1972

**ASSOCIATE ARCHITECT**  
 Stone, Marmacini and Patterson  
 One Market Plaza  
 Spear Street Tower, Suite 400  
 San Francisco, CA 94105  
 (415) 227-0100

**CONSULTANTS**  
 Structural Engineers  
 H.J. Degenkolb Associates  
 Mechanical Engineers  
 Capital Engineering Consultants, Inc.  
 Electrical Engineers  
 The Engineering Enterprise  
 Cost Estimator  
 Adamson Associates

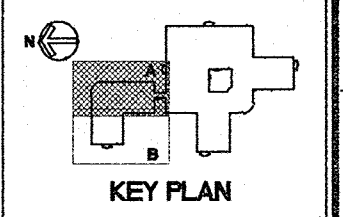
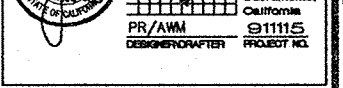
**Landscapes Design/  
 Land Planning**  
 Oni Lang Associates, Inc.

**Civil Engineer**  
 Sandia and Associates, Inc.

**Elevator Consultant**  
 Sykes and Hennessy

**Fire Protection**  
 Rolf Jensen and Associates

**Food Service Consultant**  
 Chit-little International, Inc.



Revisions	Date

Location: VA Medical Center  
 Palo Alto, CA

Project Title:  
**REPLACE CLINICAL/  
 BED TOWER FOR  
 SEISMIC CORRECTIONS**

**FULLY SPRINKLERED**

TRA Project No. 93007	Checked TGT	Drawn AWM
--------------------------	----------------	--------------

Drawing Title:  
**THIRD FLOOR PLAN,  
 AREA A -  
 PLUMBING PIPING**

Scale: 1/8" = 1'-0"

VA Project No. 640-042G	Building Number <b>101</b>
Date 2 MAY 1994	DRAWING NO. <b>P2.3.1A</b>

- SHEET NOTES:**
- ① 3/4" H x CW, 3" W, 2" V
  - ② 1/2" H x CW, 2" W, 1 1/2" V
  - ③ 1/2" CW, 2" W, 1 1/2" V
  - ④ 1" CW, 3/4" HW, 2" W, 2" V
  - ⑤ LOCATE VALVES IN CORRIDOR ABOVE CEILING.
  - ⑥ 1/2" CW TO ICE MAKER WALL BOX.

\*FOR BASIC FIRE PROTECTION DIAGRAMS, SEE FIRE PROTECTION PLANS, FP PREFIX DRAWINGS. FOR SPECIFIC PARTITION TYPES SEE ARCHITECTURAL DIMENSION PLANS.\*