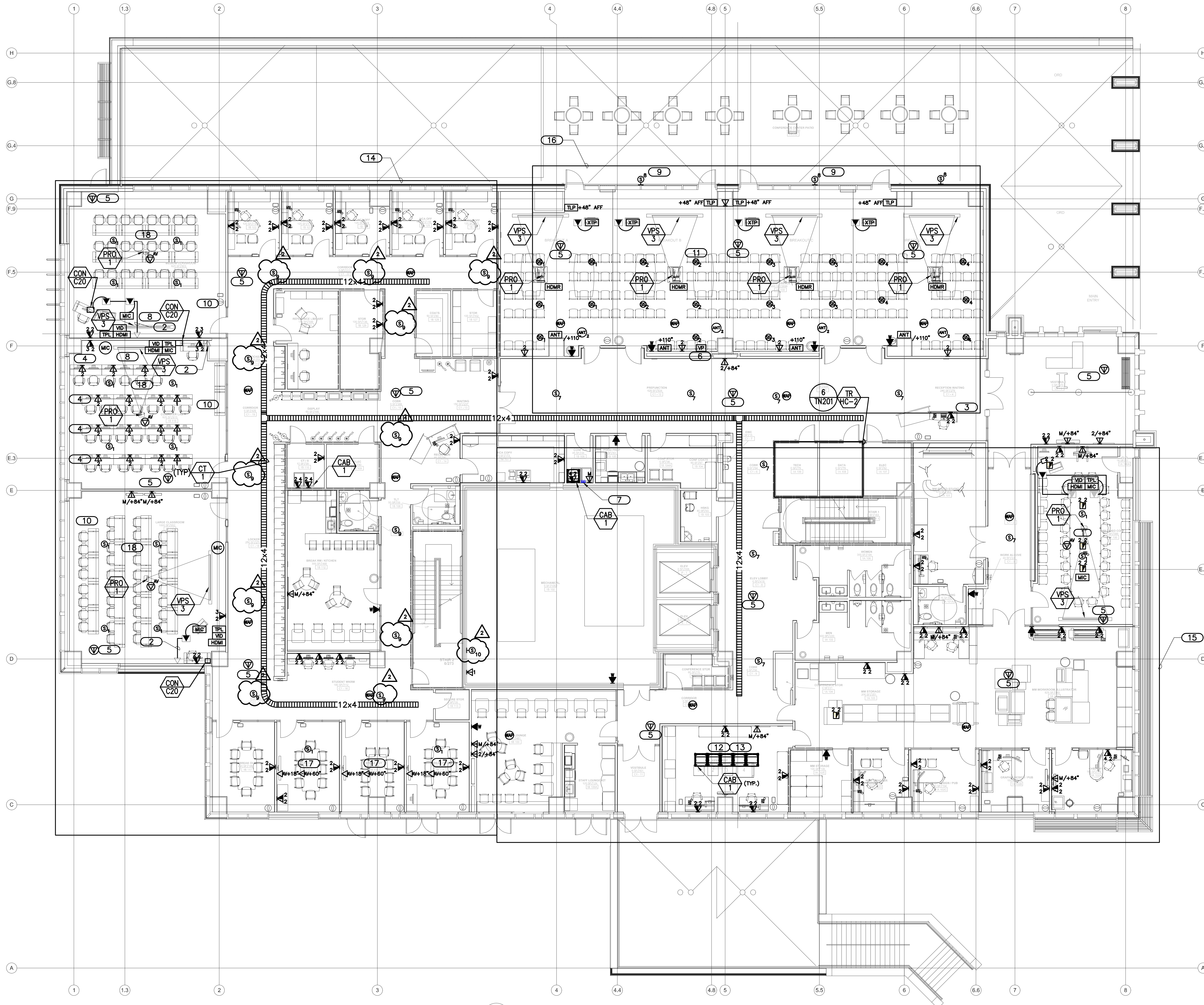


three eighths inch = one foot
one eighth inch = one foot
one quarter inch = one foot
one half inch = one foot
three quarters inch = one foot
one inch = one foot
one and one half inches = one foot
two inches = one foot
three inches = one foot
four inches = one foot
five inches = one foot
six inches = one foot
seven inches = one foot
eight inches = one foot
nine inches = one foot
ten inches = one foot
eleven inches = one foot
twelve inches = one foot
thirteen inches = one foot
fourteen inches = one foot
fifteen inches = one foot
sixteen inches = one foot
seventeen inches = one foot
eighteen inches = one foot
nineteen inches = one foot
twenty inches = one foot
twenty one inches = one foot
twenty two inches = one foot
twenty three inches = one foot
twenty four inches = one foot
twenty five inches = one foot
twenty six inches = one foot
twenty seven inches = one foot
twenty eight inches = one foot
twenty nine inches = one foot
thirty inches = one foot
thirty one inches = one foot
thirty two inches = one foot
thirty three inches = one foot
thirty four inches = one foot
thirty five inches = one foot
thirty six inches = one foot
thirty seven inches = one foot
thirty eight inches = one foot
thirty nine inches = one foot
forty inches = one foot
forty one inches = one foot
forty two inches = one foot
forty three inches = one foot
forty four inches = one foot
forty five inches = one foot
forty six inches = one foot
forty seven inches = one foot
forty eight inches = one foot
forty nine inches = one foot
fifty inches = one foot
fifty one inches = one foot
fifty two inches = one foot
fifty three inches = one foot
fifty four inches = one foot
fifty five inches = one foot
fifty six inches = one foot
fifty seven inches = one foot
fifty eight inches = one foot
fifty nine inches = one foot
sixty inches = one foot
sixty one inches = one foot
sixty two inches = one foot
sixty three inches = one foot
sixty four inches = one foot
sixty five inches = one foot
sixty six inches = one foot
sixty seven inches = one foot
sixty eight inches = one foot
sixty nine inches = one foot
seventy inches = one foot
seventy one inches = one foot
seventy two inches = one foot
seventy three inches = one foot
seventy four inches = one foot
seventy five inches = one foot
seventy six inches = one foot
seventy seven inches = one foot
seventy eight inches = one foot
seventy nine inches = one foot
eighty inches = one foot
eighty one inches = one foot
eighty two inches = one foot
eighty three inches = one foot
eighty four inches = one foot
eighty five inches = one foot
eighty six inches = one foot
eighty seven inches = one foot
eighty eight inches = one foot
eighty nine inches = one foot
ninety inches = one foot
ninety one inches = one foot
ninety two inches = one foot
ninety three inches = one foot
ninety four inches = one foot
ninety five inches = one foot
ninety six inches = one foot
ninety seven inches = one foot
ninety eight inches = one foot
ninety nine inches = one foot
one hundred inches = one foot



1 LEVEL 1 FLOOR PLAN - DATA - TECHNOLOGY
SCALE: 1/8" = 1'-0"

GENERAL SHEET NOTES	KEYNOTES
1. REFER TO 4/TN300 FOR TECHNOLOGY ROUGH-IN MOUNTING DETAIL. 2. REFER TO 5/TN300 FOR FIRE RATED CABLE PATHWAY DETAIL.	1. CONFERENCE ROOM A/V SYSTEM. REFER TO 3/TN403 FOR CONFERENCE ROOM RISER DIAGRAM ROOMS 8A119, 1A100, AND 2A109. REFER TO MATERIAL LIST FOR INFORMATION. MATERIAL LIST ITEMS (MTP/HDMI), (MPA/401), (PL/250) AND (PS/124) WILL BE HOUSED WITHIN EQUIPMENT MOUNTING KIT ABOVE PROJECTOR. REFER TO MATERIAL LIST ON SHEET TN600 FOR A DESCRIPTION OF EACH ITEM. PROJECTOR AND SCREEN WILL BE PROCURED AND INSTALLED BY AV CONTRACTOR. COORDINATE THE FINAL PROJECTOR/SCREEN MOUNTING LOCATION WITH OWNER PRIOR TO INSTALLATION. 2. PROVIDE 4"x4" ROUGH-IN NEAR TEACHER STATION DASHED LINE INDICATES UNDER FLOOR CONDUIT FOR ROUTING OF VIDEO CONFERENCE EQUIPMENT. STUB UP TO ABOVE ACCESSIBLE CEILING WITH ONE (1) 1-1/4" CONDUIT. 3. OUTLET SHALL BE MOUNTED IN FURNITURE. REFER TO ELECTRICAL PLANS FOR FLOOR BOX INFORMATION. 4. MOUNT INFORMATION OUTLETS IN FURNITURE. UTILIZE LOW VOLTAGE CONDUITS SHOWN ON ELECTRICAL PRINT EP101. 5. FUTURE CAMERA LOCATION. TERMINATE ON SEPARATE MODULAR PATCH PANEL IN FACILITIES MANAGEMENT SERVICE CLOSET. REFER TO 10/TN201 RACK ELEVATIONS. 6. VIDEO PRODUCTION PANEL. REFER TO 4/TN401 FOR VIDEO PRODUCTION PANEL DETAIL. MOUNT PANEL 18" A.F.F. 7. PROVIDE TWO (2) 4" CONDUIT SLEEVES THROUGH FLOOR TO NEAREST OVERHEAD CABLE TRAY ON LEVEL B. 8. CONTRACTOR PROVIDED, CONTRACTOR INSTALLED ELECTRIC PROJECTION SCREEN. 9. SPEAKERS SHALL BE MOUNTED IN MULLION AT 7'-0" A.F.F. 10. CLASSROOM ROOM A/V SYSTEM. REFER TO 2/TN403 FOR CLASSROOM A/V RISER DIAGRAM ROOMS 1B118, 1B119, AND 1B120. REFER TO MATERIAL LIST FOR INFORMATION. MATERIAL LIST ITEMS (MTP/HDMI), (MPA/401), (PL/250) AND (PS/124) WILL BE HOUSED WITHIN EQUIPMENT MOUNTING KIT ABOVE PROJECTOR. REFER TO MATERIAL LIST ON SHEET TN600 FOR A COMPLETE DESCRIPTION OF EACH ITEM. PROJECTOR AND SCREEN WILL BE PROCURED AND INSTALLED BY AV CONTRACTOR. COORDINATE THE FINAL PROJECTOR/SCREEN MOUNTING LOCATION WITH OWNER PRIOR TO INSTALLATION. 11. CONFERENCE ROOM A/V SYSTEM. REFER TO 1/TN402 FOR PRESENTATION SYSTEM RISER DIAGRAM ROOM 1B130. 12. PROVIDE THREE (3) RG-11 COAX FROM 1A102F TO MCR/1. COORDINATE TERMINATION AND LOCATION WITH OWNER. 13. CONTRACTOR SHALL RELOCATE EXISTING CAMPUS TELEVISION SYSTEM HEAD-END FROM BUILDING 61. CONTRACTOR SHALL COORDINATE ALL DOWN-TIME AND MOVE SCHEDULE WITH OWNER TO MINIMIZE DOWN-TIME. ALL RACKS, FIBER-OPTIC CABLE AND TRANSCEIVERS SHALL BE IN PLACE AND READY TO ACCEPT RELOCATED HEAD-END EQUIPMENT PRIOR TO MOVE. REFER TO 7/TN401 FOR PARTIAL CAMPUS CATV DISTRIBUTION RISER DIAGRAM. 14. PAGING SPEAKERS IN THIS AREA SHALL BE PROGRAMMED AS ZONE 1. SPEAKERS SHALL BE WIRED PER SPEAKER SUBSCRIPT. 15. PAGING SPEAKERS IN THIS AREA SHALL BE PROGRAMMED AS ZONE 2. SPEAKERS SHALL BE WIRED PER SPEAKER SUBSCRIPT. 16. PAGING SPEAKERS IN THIS AREA SHALL BE PROGRAMMED AS ZONE 3. SPEAKERS SHALL BE WIRED PER SPEAKER SUBSCRIPT. 17. REFER TO 4/TN404 FOR ROOMS 1B 114, 1B 115 AND 1B 116 AV RISER DIAGRAM. 18. SPEAKERS LOCATED IN THIS CLASSROOM ARE PART OF THE AV SYSTEM. REFER TO 2/TN403 FOR CLASSROOM AV RISER DIAGRAM.

14. PAGING SPEAKERS IN THIS AREA SHALL BE PROGRAMMED AS ZONE 1. SPEAKERS SHALL BE WIRED PER SPEAKER SUBSCRIPT.

15. PAGING SPEAKERS IN THIS AREA SHALL BE PROGRAMMED AS ZONE 2. SPEAKERS SHALL BE WIRED PER SPEAKER SUBSCRIPT.

16. PAGING SPEAKERS IN THIS AREA SHALL BE PROGRAMMED AS ZONE 3. SPEAKERS SHALL BE WIRED PER SPEAKER SUBSCRIPT.

17. REFER TO 4/TN404 FOR ROOMS 1B 114, 1B 115 AND 1B 116 AV RISER DIAGRAM.

18. SPEAKERS LOCATED IN THIS CLASSROOM ARE PART OF THE AV SYSTEM. REFER TO 2/TN403 FOR CLASSROOM AV RISER DIAGRAM.

FULLY SPRINKLERED

CONSULTANTS: STRUCTURAL ENGINEER: KPF CONSULTING ENGINEERS 1630 DES PERES ROAD, SUITE 100 ST. LOUIS, MO 63131 PHONE: (314) 635-0524 MECHANICAL/ELECTRICAL/PLUMBING: KIWI ENGINEERING CONSULTANTS 415 SUMNER DRIVE, SUITE 104 ST. LOUIS, MO 63143 PHONE: (314) 645-1132 CODE CONSULTANT/FIRE PROTECTION: LERCH BATES INC. 2043 WOODLAND PARKWAY, SUITE 300 ST. LOUIS, MO 63146 PHONE: (314) 991-2633 CIVIL ENGINEER: STOCK & ASSOCIATES CONSULTING ENGINEERS, INC. 257 CHESTERFIELD BUSINESS PARKWAY CHESTERFIELD, MO 63005 PHONE: (636) 930-9100 AUTOMATIC TRANSPORT: LERCH BATES INC. 8089 S. LINCOLN STREET, SUITE 207 LITTLETON, CO 80122 PHONE: (720) 283-8182 ESTIMATING: KIWAME BUILDING GROUP, INC. 1204 WASHINGTON AVENUE, SUITE 200 ST. LOUIS, MO 63103 PHONE: (314) 843-5344 HAZARDOUS MATERIALS: ALTEC ENVIRONMENTAL CONSULTING, LLC P.O. BOX 17867 SHREVEPORT, LA 71138-0867 PHONE: (318) 687-3771 IRRIGATION CONSULTANTS: IRM 9902 BANYON TREE ST. LOUIS, MO 63126 PHONE: (318) 843-1481		CERTIFICATE OF AUTHORITY: 	ARCHITECT/ENGINEERS: CHRISTNER ARCHITECTS DESIGNERS PLANNERS LANDSCAPE ARCHITECTS 168 N. MERAMEC AVENUE ST. LOUIS, MISSOURI 63105 TEL 314 725 2927 FAX 314 725 2928 CHRISTNERINC.COM THE SEAL (S) AND SIGNATURE(S) APPLY ONLY TO THE DOCUMENT TO WHICH THEY ARE AFFIXED, AND WE EXPRESSLY DISCLAIM ANY RESPONSIBILITY FOR ALL OTHER PLANS, SPECIFICATIONS, ESTIMATES, REPORTS, OR OTHER DOCUMENTS OR INSTRUMENTS RELATING TO OR INTRUDE TO BE USED FOR ANY PART OF PARTS OF THE PROJECT. © COPYRIGHT 2012 CHRISTNER INC.	Drawing Title LEVEL 1 FLOOR PLAN - DATA - TECHNOLOGY Approved: Project Director 	Project Title TENANT BUILDING Location JEFFERSON BARRACKS DIVISION Date 29 OCTOBER 2012 Checked DARHAR Drawn KEIEVE	Project Number 657-313D Building Number 56 Drawing Number TD101 Dwg. 120 of 153	Office of Construction and Facilities Management
--	--	--------------------------------------	--	---	---	--	---