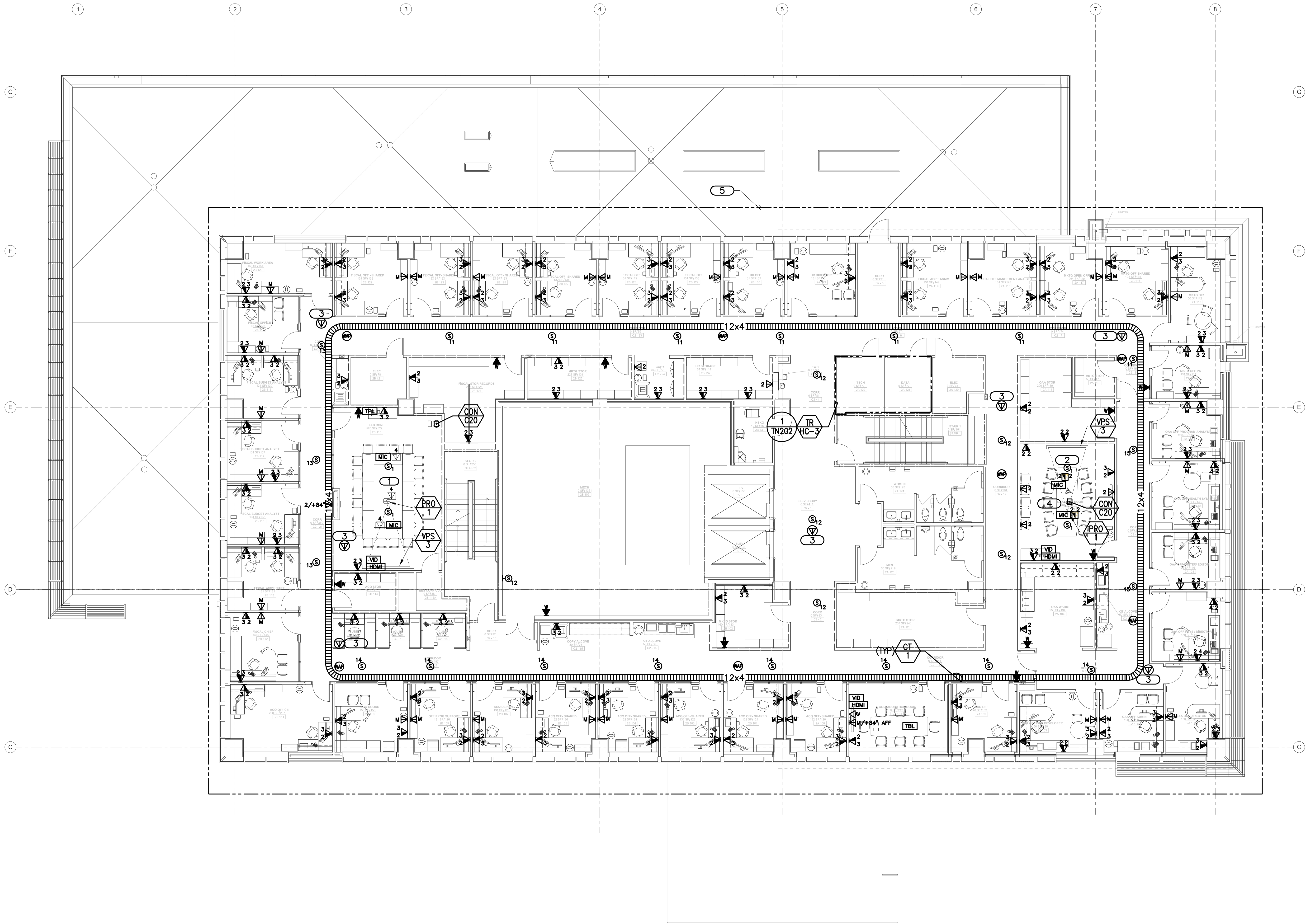


three eighths inch = one foot  
one eighth inch = one foot  
one quarter inch = one foot  
one half inch = one foot  
three quarters inch = one foot  
one inch = one foot  
one and one half inches = one foot  
two inches = one foot  
three inches = one foot  
four inches = one foot  
five inches = one foot  
six inches = one foot  
seven inches = one foot  
eight inches = one foot  
nine inches = one foot  
ten inches = one foot  
eleven inches = one foot  
twelve inches = one foot  
thirteen inches = one foot  
fourteen inches = one foot  
fifteen inches = one foot  
sixteen inches = one foot  
seventeen inches = one foot  
eighteen inches = one foot  
nineteen inches = one foot  
twenty inches = one foot  
twenty one inches = one foot  
twenty two inches = one foot  
twenty three inches = one foot  
twenty four inches = one foot  
twenty five inches = one foot  
twenty six inches = one foot  
twenty seven inches = one foot  
twenty eight inches = one foot  
twenty nine inches = one foot  
thirty inches = one foot  
thirty one inches = one foot  
thirty two inches = one foot  
thirty three inches = one foot  
thirty four inches = one foot  
thirty five inches = one foot  
thirty six inches = one foot  
thirty seven inches = one foot  
thirty eight inches = one foot  
thirty nine inches = one foot  
forty inches = one foot  
forty one inches = one foot  
forty two inches = one foot  
forty three inches = one foot  
forty four inches = one foot  
forty five inches = one foot  
forty six inches = one foot  
forty seven inches = one foot  
forty eight inches = one foot  
forty nine inches = one foot  
fifty inches = one foot  
fifty one inches = one foot  
fifty two inches = one foot  
fifty three inches = one foot  
fifty four inches = one foot  
fifty five inches = one foot  
fifty six inches = one foot  
fifty seven inches = one foot  
fifty eight inches = one foot  
fifty nine inches = one foot  
sixty inches = one foot  
sixty one inches = one foot  
sixty two inches = one foot  
sixty three inches = one foot  
sixty four inches = one foot  
sixty five inches = one foot  
sixty six inches = one foot  
sixty seven inches = one foot  
sixty eight inches = one foot  
sixty nine inches = one foot  
seventy inches = one foot  
seventy one inches = one foot  
seventy two inches = one foot  
seventy three inches = one foot  
seventy four inches = one foot  
seventy five inches = one foot  
seventy six inches = one foot  
seventy seven inches = one foot  
seventy eight inches = one foot  
seventy nine inches = one foot  
eighty inches = one foot  
eighty one inches = one foot  
eighty two inches = one foot  
eighty three inches = one foot  
eighty four inches = one foot  
eighty five inches = one foot  
eighty six inches = one foot  
eighty seven inches = one foot  
eighty eight inches = one foot  
eighty nine inches = one foot  
ninety inches = one foot  
ninety one inches = one foot  
ninety two inches = one foot  
ninety three inches = one foot  
ninety four inches = one foot  
ninety five inches = one foot  
ninety six inches = one foot  
ninety seven inches = one foot  
ninety eight inches = one foot  
ninety nine inches = one foot  
one hundred inches = one foot



1 LEVEL 2 FLOOR PLAN - DATA - TECHNOLOGY  
SCALE: 1/8" = 1'-0"

#### CONSULTANTS:

STRUCTURAL ENGINEER:  
KPF CONSULTING ENGINEERS  
1630 DES PERES ROAD, SUITE 100  
ST. LOUIS, MO 63131  
PHONE: (314) 635-0524

CODE CONSULTANT/FIRE PROTECTION:  
CODE CONSULTANTS, INC.  
2043 WOODLAND PARKWAY, SUITE 300  
ST. LOUIS, MO 63146  
PHONE: (314) 991-2633

MECHANICAL/ELECTRICAL/PLUMBING:  
KJWW ENGINEERING CONSULTANTS  
#15 SUMNER DRIVE, SUITE 104  
ST. LOUIS, MO 63143  
PHONE: (314) 645-1132

CIVIL ENGINEER:  
STOCK & ASSOCIATES CONSULTING ENGINEERS, INC.  
257 CHESTERFIELD BUSINESS PARKWAY  
CHESTERFIELD, MO 63005  
PHONE: (630) 530-9100

AUTOMATIC TRANSPORT:  
LERCH BATES INC.  
8088 S. LINCOLN STREET, SUITE 207  
LITTLETON, CO 80122  
PHONE: (720) 283-8182

ESTIMATING:  
KIWAME BUILDING GROUP, INC.  
1204 WASHINGTON AVENUE, SUITE 200  
ST. LOUIS, MO 63103  
PHONE: (314) 962-5344

HAZARDOUS MATERIALS:  
ALTEC ENVIRONMENTAL CONSULTING, LLC  
P.O. BOX 17867  
SHREVEPORT, LA 71138-0867  
PHONE: (318) 687-3771

IRRIGATION CONSULTANTS:  
IRM  
9902 BANYON TREE  
ST. LOUIS, MO 63126  
PHONE: (318) 843-1481

#### CERTIFICATE OF AUTHORITY:



#### ARCHITECT/ENGINEERS:

**CHRISTNER**

ARCHITECTS | DESIGNERS | PLANNERS | LANDSCAPE ARCHITECTS  
168 N. MERAMEC AVENUE | ST. LOUIS, MISSOURI 63105  
TEL 314 725 2927 | FAX 314 725 2928 | CHRISTNERINC.COM

THE SEAL (S) AND SIGNATURE(S) APPLY ONLY TO THE DOCUMENT TO WHICH THEY ARE AFFIXED, AND WE EXPRESSLY DISCLAIM ANY RESPONSIBILITY FOR ALL OTHER PLANS, SPECIFICATIONS, ESTIMATES, REPORTS, OR OTHER DOCUMENTS OR INSTRUMENTS RELATING TO OR INTENDED TO BE USED FOR ANY PART OF PARTS OF THE PROJECT.  
© COPYRIGHT 2012 CHRISTNER INC.

#### Drawing Title

LEVEL 2 FLOOR PLAN - DATA - TECHNOLOGY

Approved: Project Director

*John Sanders*

#### Project Title

TENANT BUILDING

#### Location

JEFFERSON BARRACKS DIVISION

#### Date

29 OCTOBER 2012

#### Checked

DARHAR

#### Drawn

KEIEVE

#### Project Number

657-313D

#### Building Number

56

#### Drawing Number

TD102

Dwg. 121 of 153

Office of  
Construction  
and Facilities  
Management



#### GENERAL SHEET NOTES

1. REFER TO 4/TN300 FOR TECHNOLOGY ROUGH-IN MOUNTING DETAIL.
2. REFER TO 5/TN300 FOR FIRE RATED CABLE PATHWAY DETAIL.

#### KEYNOTES

1. CONFERENCE ROOM A/V SYSTEM. REFER TO 2/TN404 FOR CONFERENCE ROOM RISER DIAGRAM ROOM 2B115. REFER TO MATERIAL LIST ITEM (MTP/HDMI) FOR COMPLETE INFORMATION. MATERIAL LIST ITEMS (MTP/HDMI), (MPA/401), (IPL/250) AND (PS/124) WILL BE HOUSED WITHIN EQUIPMENT MOUNTING KIT ABOVE PROJECTOR. REFER TO MATERIAL LIST ON SHEET TN600 FOR A COMPLETE DESCRIPTION OF EACH ITEM. PROJECTOR AND SCREEN WILL BE PROCURED BY THE OWNER AND INSTALLED BY AV CONTRACTOR. COORDINATE THE FINAL PROJECTOR/SCREEN MOUNTING LOCATION WITH OWNER PRIOR TO INSTALLATION.
2. CONTRACTOR TO PROVIDE 3 GANG TABLE TOP SURFACE MOUNT KIT FOR MOUNTING OF ARCHITECTURAL DEVICES.
3. FUTURE CCTV CAMERA LOCATION. TERMINATE ON SEPARATE MODULAR PATCH PANEL IN FACILITIES MANAGEMENT SERVICE CLOSET. REFER TO 5/TN202 FOR RACK ELEVATION.
4. CONFERENCE ROOM A/V SYSTEM. REFER TO 3/TN403 FOR CONFERENCE ROOM RISER DIAGRAM ROOMS BA119, 1A100, AND 2A109. REFER TO MATERIAL LIST ITEM (MTP/HDMI) FOR COMPLETE INFORMATION. MATERIAL LIST ITEMS (MTP/HDMI), (MPA/401), (IPL/250) AND (PS/124) WILL BE HOUSED WITHIN EQUIPMENT MOUNTING KIT ABOVE PROJECTOR. REFER TO MATERIAL LIST ON SHEET TN600 FOR A COMPLETE DESCRIPTION OF EACH ITEM. PROJECTOR AND SCREEN WILL BE PROCURED BY THE OWNER AND INSTALLED BY AV CONTRACTOR. COORDINATE THE FINAL PROJECTOR/SCREEN MOUNTING LOCATION WITH OWNER PRIOR TO INSTALLATION.
5. PAGING SPEAKERS IN THIS AREA SHALL BE PROGRAMMED AS ZONE 5. SPEAKER SHALL BE WIRED PER SPEAKER SUBSCRIPT.