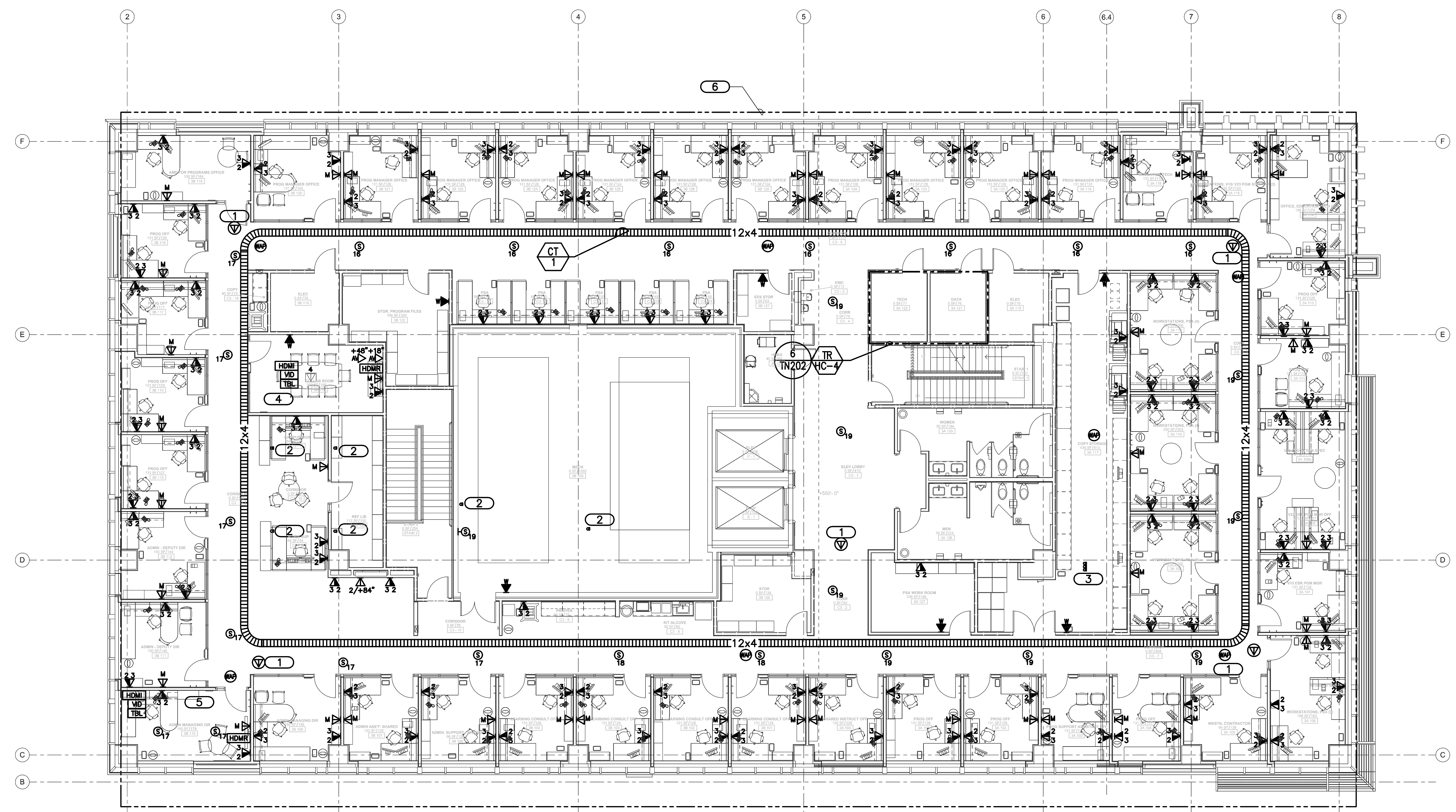


three inches = one foot
 one and one half inches = one foot
 one inch = one foot
 three quarters inch = one foot
 one half inch = one foot
 three eighths inch = one foot
 one quarter inch = one foot
 one eighth inch = one foot



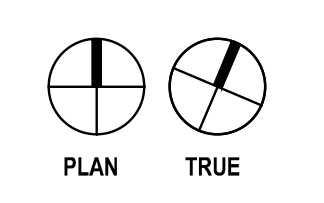
1 LEVEL 3 FLOOR PLAN - DATA - TECHNOLOGY
 SCALE: 1/8" = 1'-0"

GENERAL SHEET NOTES

- REFER TO 4/TN300 FOR TECHNOLOGY ROUGH-IN MOUNTING DETAIL.
- REFER TO 5/TN300 FOR FIRE RATED CABLE PATHWAY DETAIL.

KEYNOTES

- FUTURE CCTV CAMERA LOCATION. TERMINATE ON SEPARATE MODULAR PATCH PANEL IN FACILITIES MANAGEMENT SERVICE CLOSET. REFER TO 10/TN202 FOR RACK ELEVATION.
- ONE (1) 2" CONDUIT FROM ROOF PENETRATION TO NEAREST CABLE TRAY. CONDUIT IS PROVIDED FOR OWNERS SATELLITE DISH INSTALLATION COMPANY.
- THREE (3) 2" CONDUITS FROM ROOF PENETRATION TO NEAREST CABLE TRAY. CONDUIT IS PROVIDED FOR OWNERS SATELLITE DISH INSTALLATION COMPANY.
- CONFERENCE ROOM A/V SYSTEM. REFER TO 5/TN403 FOR CONFERENCE ROOM RISER DIAGRAM ROOM 3B114. REFER TO MATERIAL LIST FOR INFORMATION. MATERIAL LIST ITEMS (MTP/HDMI), (MPA/401), (IPL/250) AND (PS/124) WILL BE HOUSED WITHIN EQUIPMENT MOUNTING KIT ABOVE PROJECTOR. REFER TO MATERIAL LIST ON SHEET TN600 FOR A DESCRIPTION OF EACH ITEM. PROJECTOR AND SCREEN WILL BE PROCURED BY THE OWNER AND INSTALLED BY AV CONTRACTOR. COORDINATE THE FINAL PROJECTOR/SCREEN MOUNTING LOCATION WITH OWNER PRIOR TO INSTALLATION.
- CONFERENCE ROOM A/V SYSTEM. REFER TO T/TN500 FOR CONFERENCE ROOM RISER DIAGRAM ROOM 3B110. REFER TO MATERIAL LIST FOR INFORMATION. MATERIAL LIST ITEMS (MTP/HDMI), (MPA/401), (IPL/250) AND (PS/124) WILL BE HOUSED WITHIN EQUIPMENT MOUNTING KIT ABOVE PROJECTOR. REFER TO MATERIAL LIST ON SHEET TN600 FOR A DESCRIPTION OF EACH ITEM. PROJECTOR AND SCREEN WILL BE PROCURED BY THE OWNER AND INSTALLED BY AV CONTRACTOR. COORDINATE THE FINAL PROJECTOR/SCREEN MOUNTING LOCATION WITH OWNER PRIOR TO INSTALLATION.
- PAGING SPEAKERS IN THIS AREA SHALL BE PROGRAMMED AS ZONE 6. SPEAKERS SHALL BE WIRED PER SPEAKER SUBSCRIPT.



FULLY SPRINKLERED

No.	Date	Revisions
#2	April 12, 2013	Amendment 6
#1	April 4, 2013	Amendment 4

CONSULTANTS:	
STRUCTURAL ENGINEER: KPFF CONSULTING ENGINEERS 1630 DES PERES ROAD, SUITE 100 ST. LOUIS, MO 63131 PHONE: (314) 635-0524	CODE CONSULTANT/FIRE PROTECTION: CODE CONSULTANTS, INC. 2043 WOODLAND PARKWAY, SUITE 300 ST. LOUIS, MO 63146 PHONE: (314) 991-2633
MECHANICAL/ELECTRICAL/PLUMBING: KJWW ENGINEERING CONSULTANTS #15 SUNMEN DRIVE, SUITE 104 ST. LOUIS, MO 63143 PHONE: (314) 645-1132	CIVIL ENGINEER: STOK & ASSOCIATES CONSULTING ENGINEERS, INC. 257 CHESTERFIELD BUSINESS PARKWAY CHESTERFIELD, MO 63005 PHONE: (314) 651-9100
AUTOMATIC TRANSPORT: LERCH BATES INC. 8088 S LINCOLN STREET, SUITE 207 LITTLETON, CO 80122 PHONE: (720) 283-6182	ESTIMATING: KWAME BUILDING GROUP, INC. 1204 WASHINGTON AVENUE, SUITE 200 ST. LOUIS, MO 63103 PHONE: (314) 962-5344
HAZARDOUS MATERIALS: ALTEC ENVIRONMENTAL CONSULTING, LLC P.O. BOX 17867 SHREVEPORT, LA 71138-0867 PHONE: (318) 687-3771	IRRIGATION CONSULTANTS: IRM 9902 BANYON TREE ST. LOUIS, MO 63126 PHONE: (318) 843-1481



ARCHITECT/ENGINEERS:

CHRISTNER

ARCHITECTS | DESIGNERS | PLANNERS | LANDSCAPE ARCHITECTS

168 N. MERAMEC AVENUE | ST. LOUIS, MISSOURI 63105
 TEL 314 725 2927 | FAX 314 725 2928 | CHRISTNERINC.COM

THE SEAL (S) AND SIGNATURE(S) APPLY ONLY TO THE DOCUMENT TO WHICH THEY ARE AFFIXED, AND WE EXPRESSLY DISCLAIM ANY RESPONSIBILITY FOR ALL OTHER PLANS, SPECIFICATIONS, ESTIMATES, REPORTS, OR OTHER DOCUMENTS OR INSTRUMENTS RELATING TO OR INTENDED TO BE USED FOR ANY PART OF PARTS OF THE PROJECT.
 © COPYRIGHT 2012 CHRISTNER INC.

Drawing Title	LEVEL 3 FLOOR PLAN - DATA - TECHNOLOGY
Project Title	TENANT BUILDING
Location	JEFFERSON BARRACKS DIVISION
Date	29 OCTOBER 2012
Checked	DARHAR
Drawn	KEIEVE
Approved: Project Director	<i>John Sanders</i>

Project Number	657-313D
Building Number	56
Drawing Number	TD103
Dwg. 122 of 153	

Office of
**Construction
 and Facilities
 Management**

Department of
 Veterans Affairs