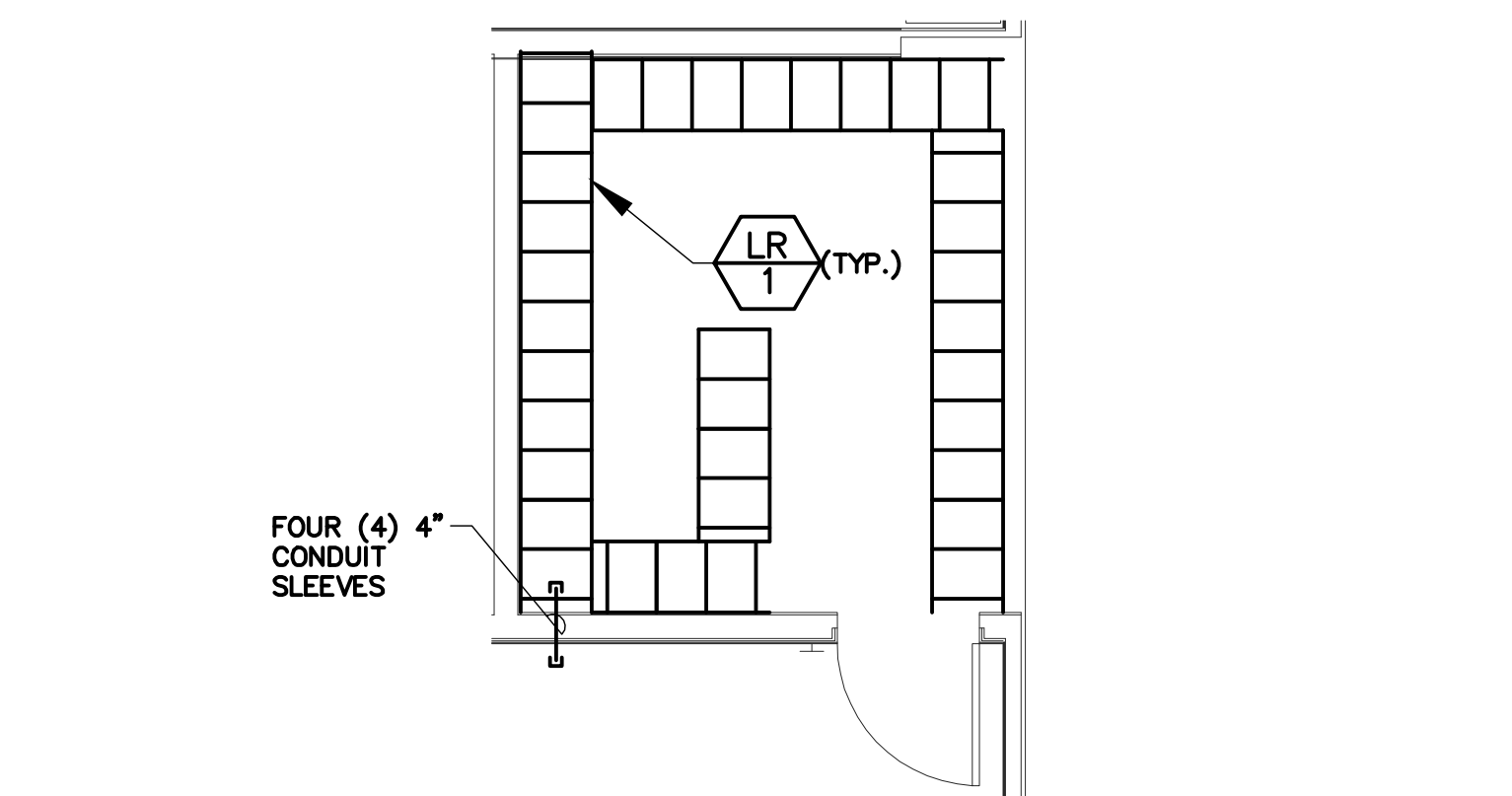


one inch = one foot
one half inch = one foot
three quarters inch = one foot
one quarter inch = one foot
one eighth inch = one foot
one sixteenth inch = one foot

1 CABLE ENTRANCE ROOM BA 114 LAYOUT

SCALE 1/4"=1'-0"

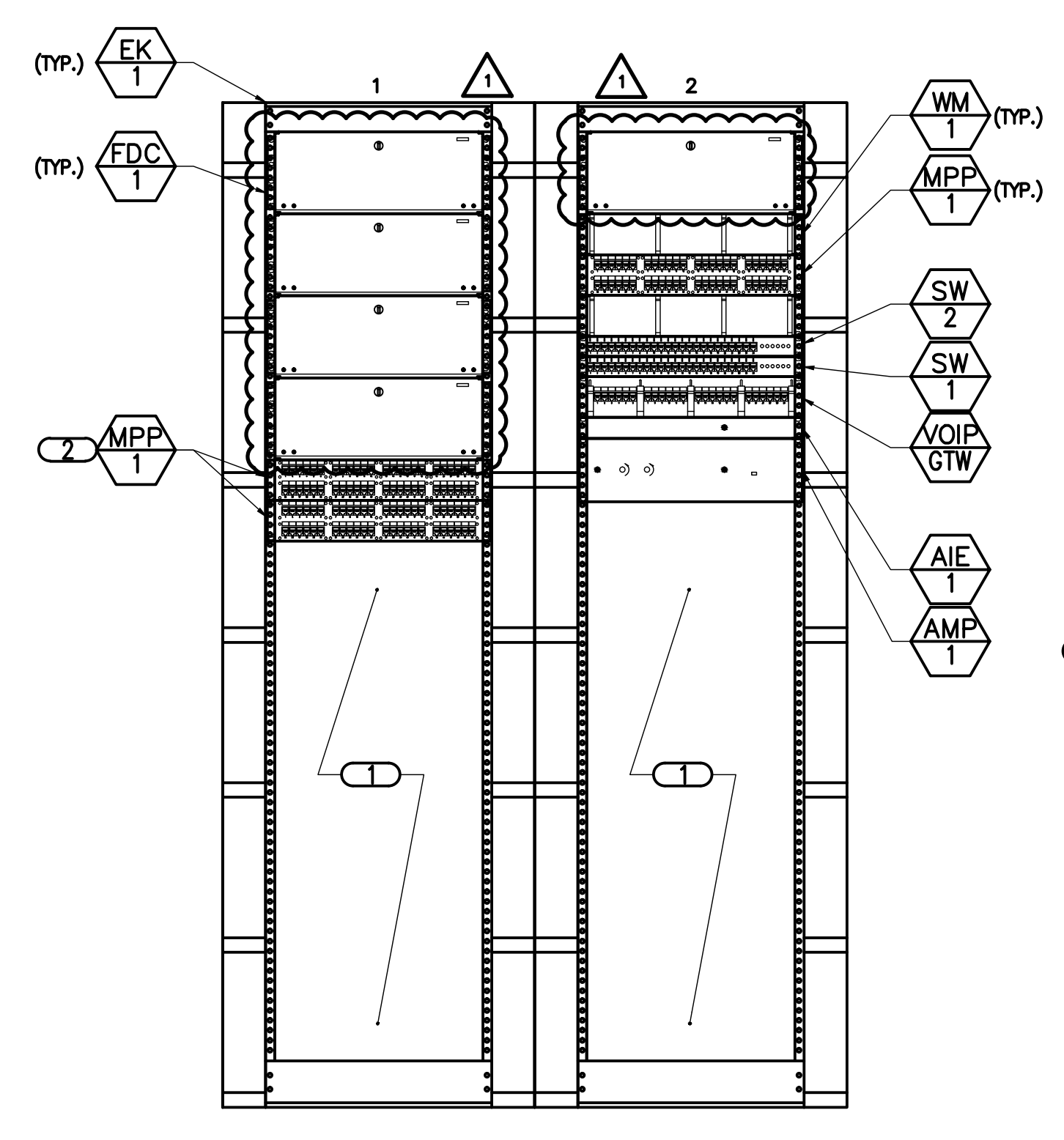
- NOTES:
- CONTRACTOR SHALL MOUNT GROUND BAR AT 7'-0" A.F.F. REFER TO 2/TN300 FOR GROUND BAR DETAIL.
 - REFER TO 2/TN200 FOR CABLE ENTRANCE ROOM BA 114 LADDER RACK LAYOUT.
- KEYNOTES:
- CONTRACTOR SHALL MOUNT MOTION DETECTOR BELOW LADDER RACK AT 7'-6" AFF.
 - NINE (9) 4" CONDUITS.



2 CABLE ENTRANCE ROOM BA 114 LADDER RACK LAYOUT

SCALE 1/4"=1'-0"

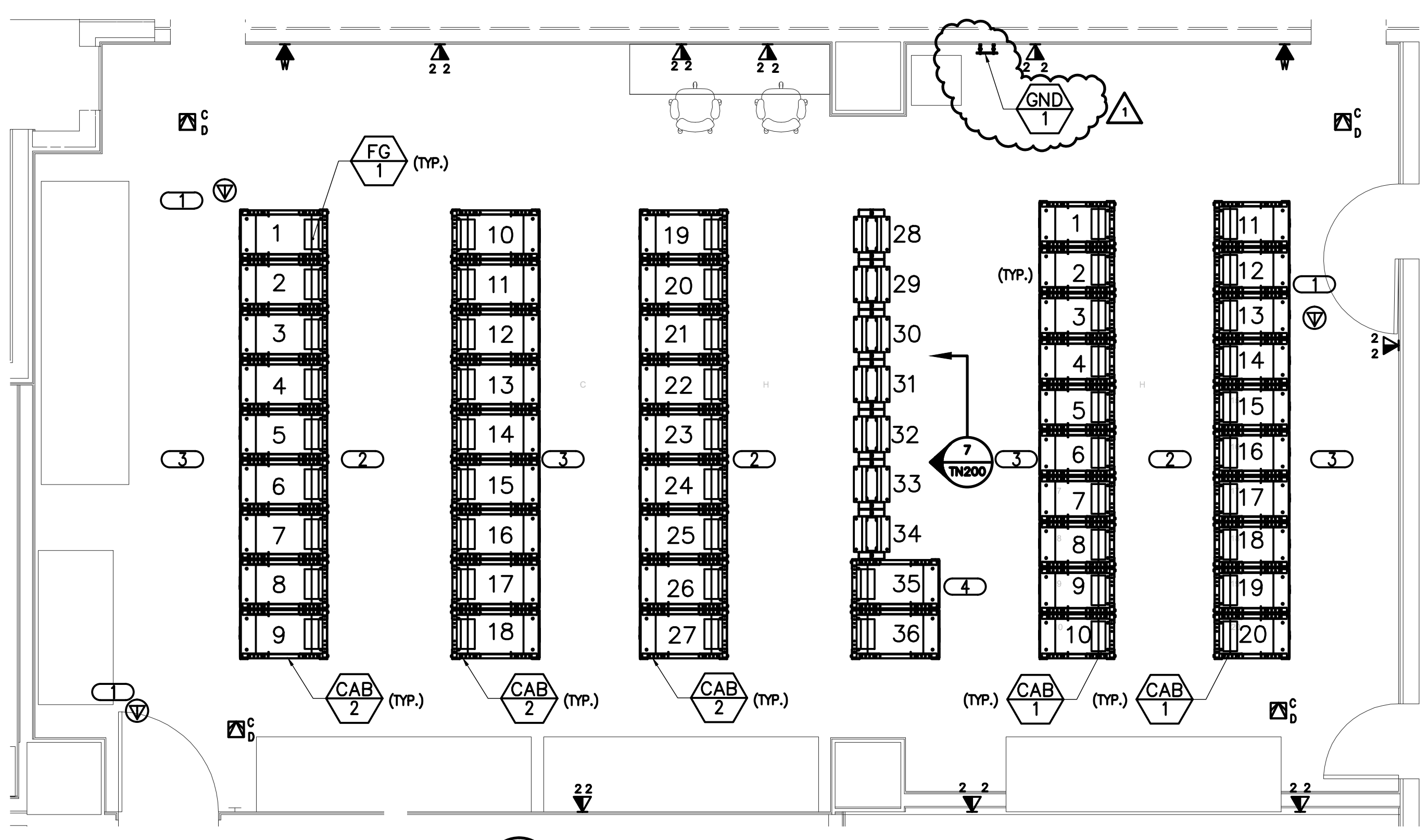
- NOTES:
- CONTRACTOR SHALL MOUNT LADDER RACK AT 8'-0" A.F.F.
 - REFER TO 7/TN300 FOR CABLE RUNWAY RADIUS DROP. PROVIDE CABLE RUNWAY RADIUS DROP FOR EACH RACK.



3 RACK ELEVATION

NO SCALE

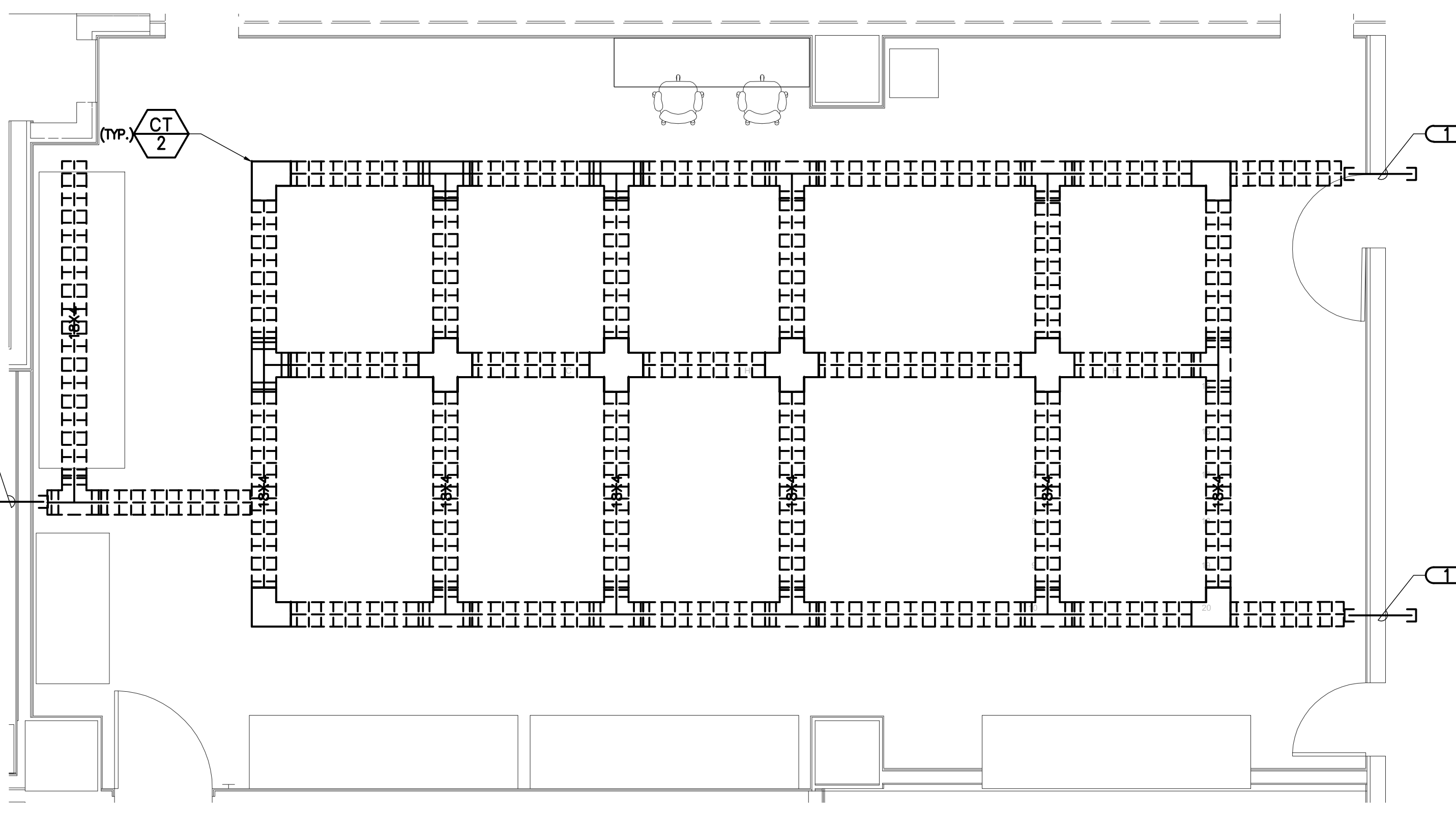
- NOTES:
- REFER TO 1/TN400 FOR TECHNOLOGY RISER DIAGRAM.
- KEYNOTES:
- SPACE FOR OWNER PROVIDED EQUIPMENT.
 - 48 PORT PATCH PANEL FOR 400 PAIR SHIELDED COPPER CABLE.



4 MCR ROOM BB102 LAYOUT

SCALE 1/4"=1'-0"

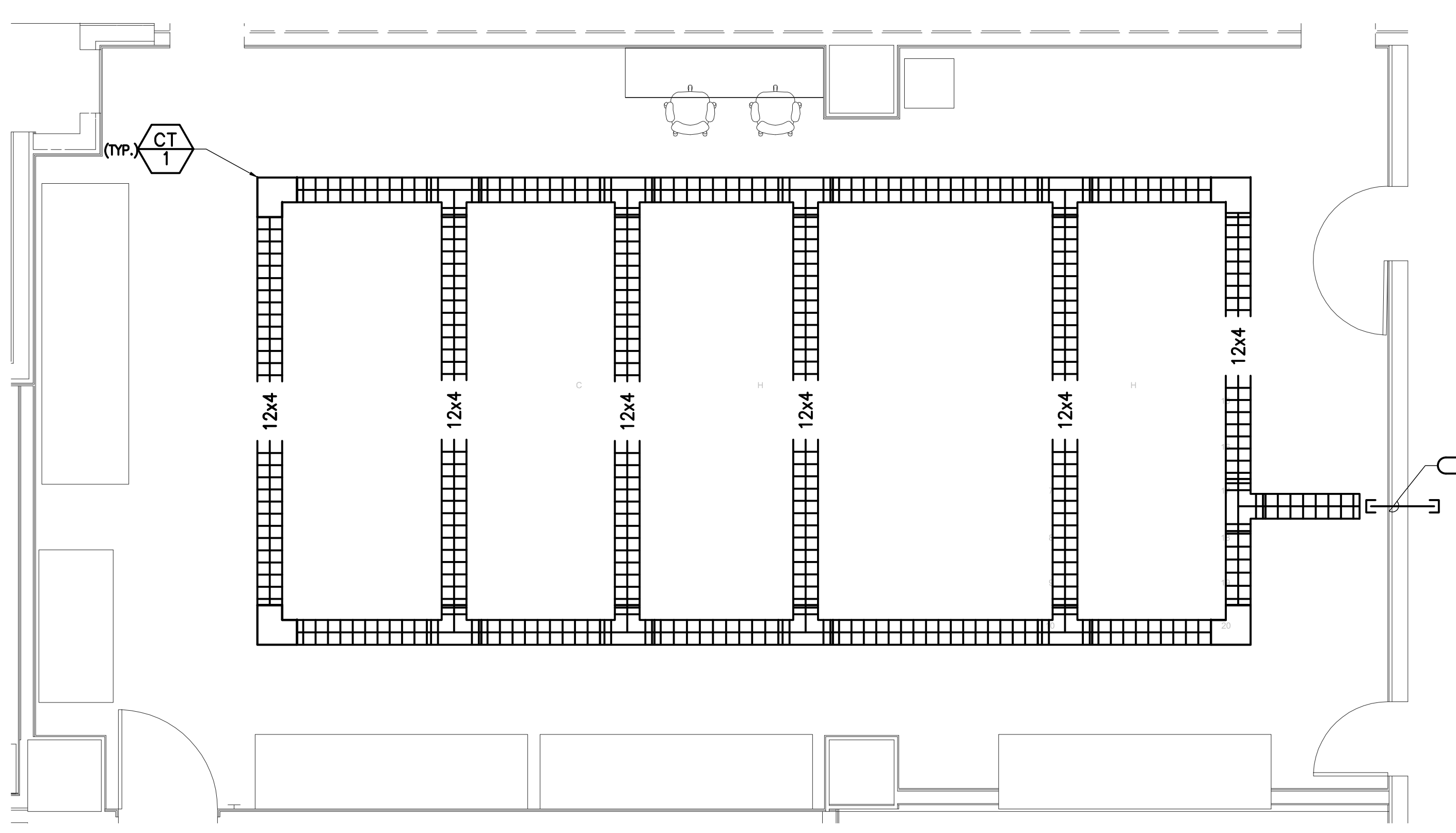
- NOTES:
- REFER TO 5/TN200 FOR UNDER FLOOR CABLE TRAY LAYOUT.
 - REFER TO 6/TN200 FOR OVERHEAD CABLE TRAY LAYOUT.
 - REFER TO 1/TN301 FOR COMPUTER ROOM SIGNAL REFERENCED GROUNDING DETAIL.
 - REFER TO 3/TN301 FOR CABINET RAISED FLOOR MOUNTING DETAIL.
 - PROVIDE AND MOUNT IN TOP OF EACH O&T CABINET (1-27 AND 35, 36) AND EES CABINETS 8 AND 16, ONE (1) 48 PORT PATCH PANEL (MPP/1), ONE (1) HORIZONTAL WIRE MANAGER (WP/2), AND ONE FIBER OPTIC DISTRIBUTION CABINET (FDC/1). INSTALL THIRTY-SIX (36) CATEGORY 6 CABLES AND TWELVE (12) STRANDS OF 50UM LASER OPTIMIZED FIBER OPTIC CABLE FROM EACH O&T CABINET (1-27) TO RELAY RACKS STARTING AT RACK 28 (EK/1). REFER TO 7/TN200 FOR RELAY RACK (EK/1) RACK ELEVATION. REFER TO DETAIL 5/TN301 FOR TYPICAL CABINET ELEVATION.
 - PROVIDE TWO (2) POWER DISTRIBUTION UNITS (PDU/1) IN BACK (HOT ROW SIDE) OF OI & T CABINETS.
 - REFER TO 5/TN301 FOR TYPICAL CABINET ELEVATION.
 - REFER TO 8/TN301 FOR FLOOR GROMMET DETAIL (FG/1).
- KEYNOTES:
- FUTURE CCTV CAMERA LOCATION. TERMINATE AT SEPARATE MODULAR PATCH PANEL IN TELECOMMUNICATIONS CLOSET. REFER TO 5/TN201 FOR RACK ELEVATION.
 - HOT ISLE. REAR OF RACKS AND EQUIPMENT EXHAUSTS TO THESE ISLES.
 - COLD ISLE. FRONT OF RACKS AND EQUIPMENT INTAKES FACE THESE ISLES.
 - RACKS 34-36 ARE RESERVED FOR OWNER PROVIDED NETWORK SWITCHES.



5 MCR ROOM BB102 UNDERFLOOR CABLE TRAY LAYOUT

SCALE 1/4"=1'-0"

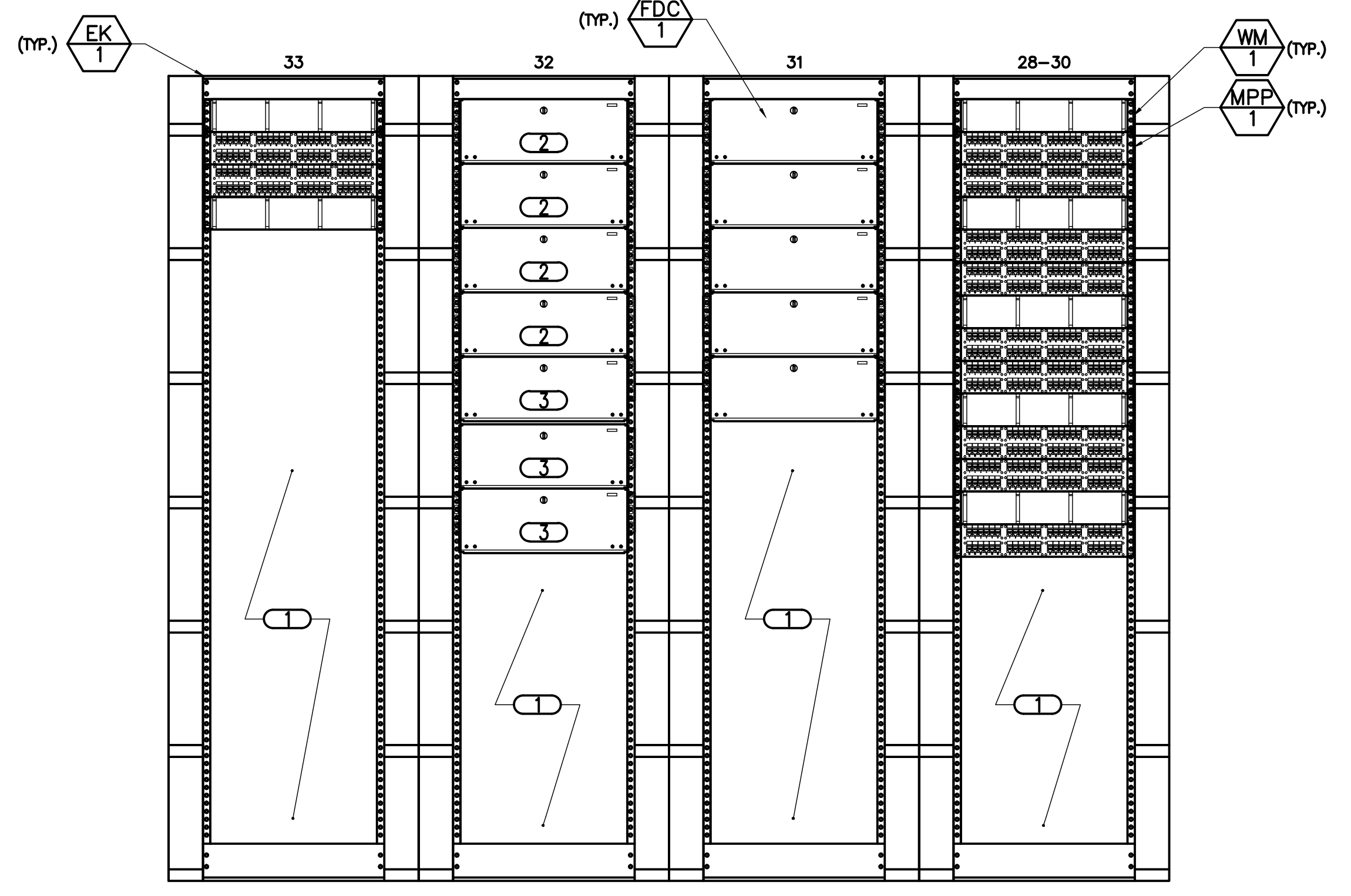
- NOTES:
- REFER TO 4/TN301 FOR RAISED FLOOR PATHWAY DIAGRAM.
 - REFER TO 1/TN300 FOR TELECOM ROOM GROUNDING DETAIL.
 - REFER TO 1/TN301 FOR COMPUTER ROOM SIGNAL REFERENCED GROUNDING DETAIL.
- KEYNOTES:
- PROVIDE THREE (3) 4" CONDUIT SLEEVE UNDER FLOOR.



6 MCR ROOM BB102 OVERHEAD CABLE TRAY LAYOUT

SCALE 1/4"=1'-0"

- NOTES:
- CONTRACTOR SHALL MOUNT LADDER RACK AT 8'-0" A.F.F.
 - REFER TO 1/TN300 FOR TELECOM ROOM GROUNDING DETAIL.
- KEYNOTES:
- PROVIDE THREE (3) 4" CONDUIT SLEEVE FOR OVERHEAD CABLE TRAY.



7 RACK ELEVATION

NO SCALE

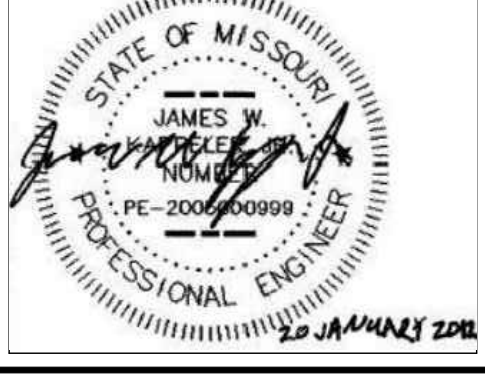
- NOTES:
- REFER TO 1/TN400 FOR TECHNOLOGY RISER DIAGRAM.
 - REFER TO 3/TN301 FOR CABINET RAISED FLOOR MOUNTING DETAIL.
 - FIBER CABLING FROM RACKS 1-27 SHALL LAND IN RACK 31.
 - CAT 6 CABLING FROM EES RACKS 6 & 16 SHALL TERMINATE ON THE MODULAR PATCH PANELS IN RACK 33.
- KEYNOTES:
- SPACE FOR OWNER PROVIDED EQUIPMENT.
 - O&T FIBER ENTRANCE CABLING SHALL LAND IN THESE FIBER DISTRIBUTION CABINETS.
 - O&T FIBER CABLING FOR THIS BUILDING SHALL LAND IN THESE FIBER DISTRIBUTION CABINETS.

No.	Date	Revisions
#1	April 4, 2013	Amendment 4

CONSULTANTS:

STRUCTURAL ENGINEER: KPF CONSULTING ENGINEERS 1630 DES PERES ROAD, SUITE 100 ST. LOUIS, MO 63101 PHONE: (314) 835-0524	CODE CONSULTANT/FIRE PROTECTION: LECH BATES INC. 2043 WOODLAND PARKWAY, SUITE 300 ST. LOUIS, MO 63146 PHONE: (314) 991-2633	AUTOMATIC TRANSPORT: LECH BATES INC. 8089 S. LINCOLN STREET, SUITE 207 LITTLETON, CO 80122 PHONE: (720) 283-8182	HAZARDOUS MATERIALS: ALTEC ENVIRONMENTAL CONSULTING, LLC P.O. BOX 17867 SHREVEPORT, LA 71138-0867 PHONE: (318) 687-3771
MECHANICAL/ELECTRICAL/PLUMBING: KWIY ENGINEERING CONSULTANTS 415 SUMNER DRIVE, SUITE 104 ST. LOUIS, MO 63143 PHONE: (314) 645-1132	CIVIL ENGINEER: STOCK & ASSOCIATES CONSULTING ENGINEERS, INC. 257 CHESTERFIELD BUSINESS PARKWAY CHESTERFIELD, MO 63005 PHONE: (636) 530-9100	ESTIMATING: KIYAME BUILDING GROUP, INC. 1204 BAYVIEW TREE ST. LOUIS, MO 63103 PHONE: (314) 862-5344	IRRIGATION CONSULTANTS: IRM 9902 BAYVIEW TREE ST. LOUIS, MO 63103 PHONE: (318) 843-1481

CERTIFICATE OF AUTHORITY:



ARCHITECT/ENGINEERS:

CHRISTNER ARCHITECTS DESIGNERS PLANNERS LANDSCAPE ARCHITECTS 168 N. MERAMEC AVENUE ST. LOUIS, MISSOURI 63105 TEL 314 725 2927 FAX 314 725 2928 CHRISTNERINC.COM	THE SEAL (S) AND SIGNATURE(S) APPLY ONLY TO THE DOCUMENT TO WHICH THEY ARE AFFIXED, AND WE EXPRESSLY DISCLAIM ANY RESPONSIBILITY FOR ALL OTHER PLANS, SPECIFICATIONS, ESTIMATES, REPORTS, OR OTHER DOCUMENTS OR INSTRUMENTS RELATING TO OR INTENDED TO BE USED FOR ANY PART OF PARTS OF THE PROJECT. © COPYRIGHT 2012 CHRISTNER INC.
---	---

Drawing Title

ENLARGED FLOOR PLANS - TECHNOLOGY
Approved: Project Director <i>John Sanders</i>

Project Title

TENANT BUILDING
Location JEFFERSON BARRACKS DIVISION
Date 29 OCTOBER 2012
Checked DARHAR
Drawn KEIEVE

Project Number

657-313D
Building Number 56
Drawing Number TN200
Dwg. 123 of 153

Office of
Construction
and Facilities
Management

Department of
Veterans Affairs