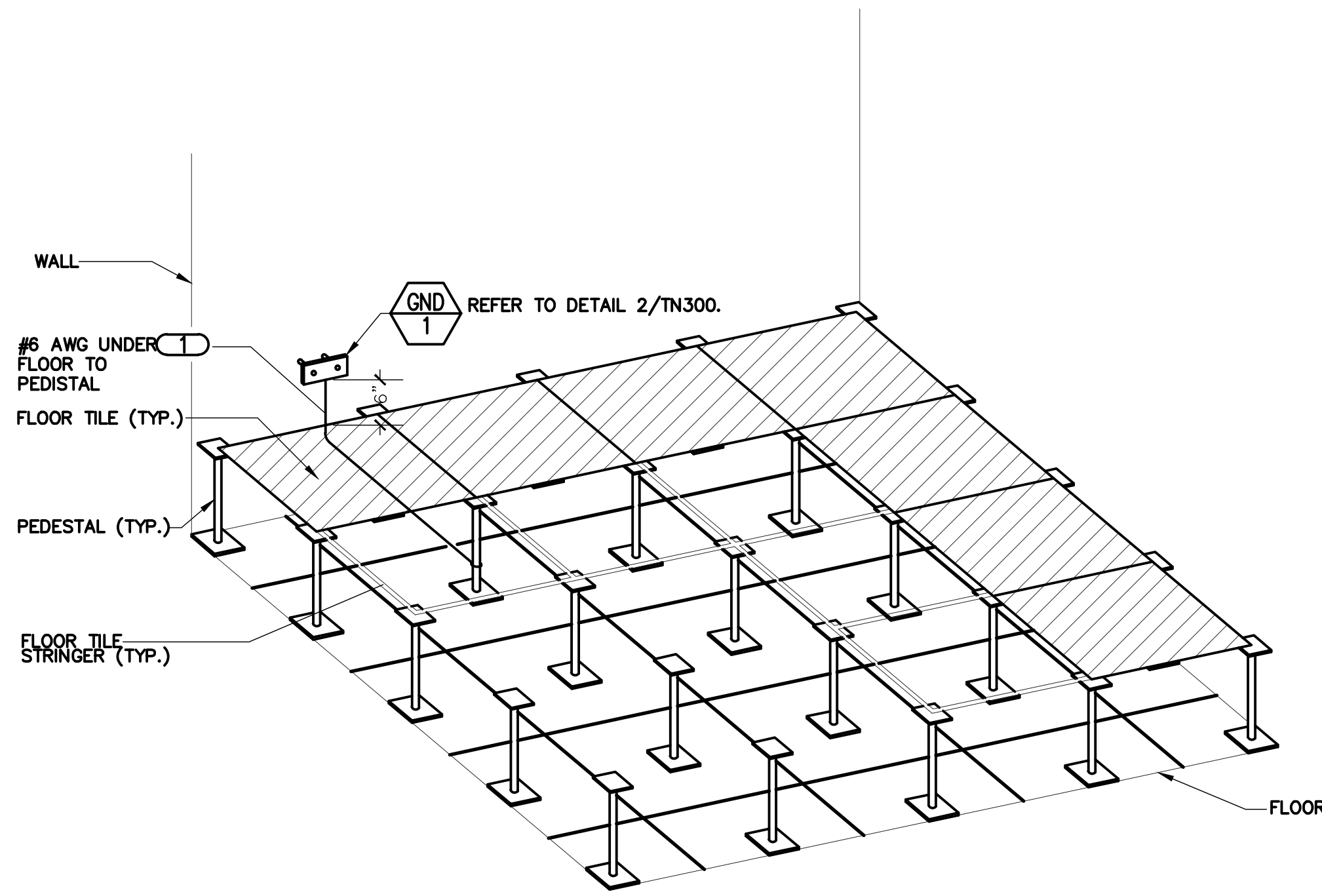
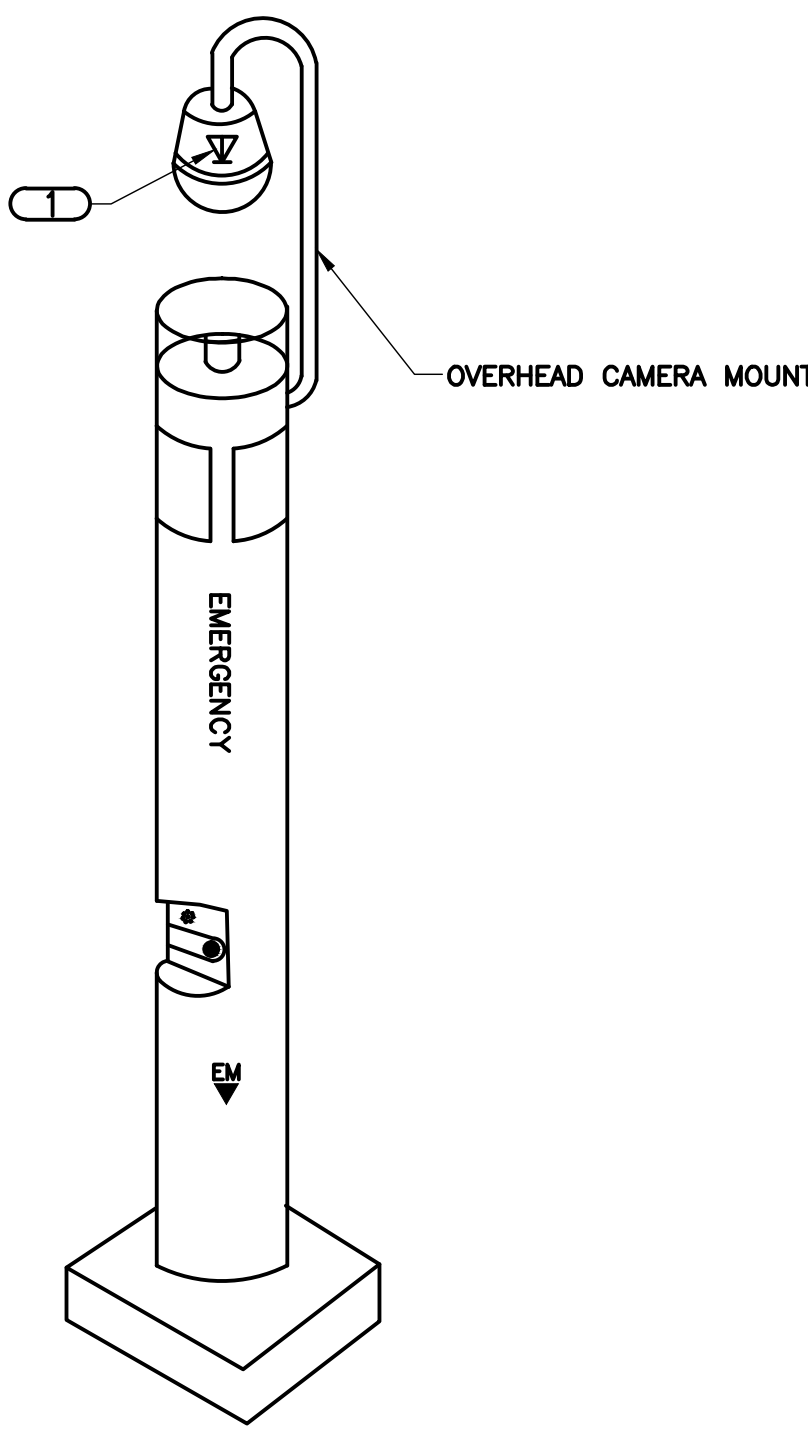


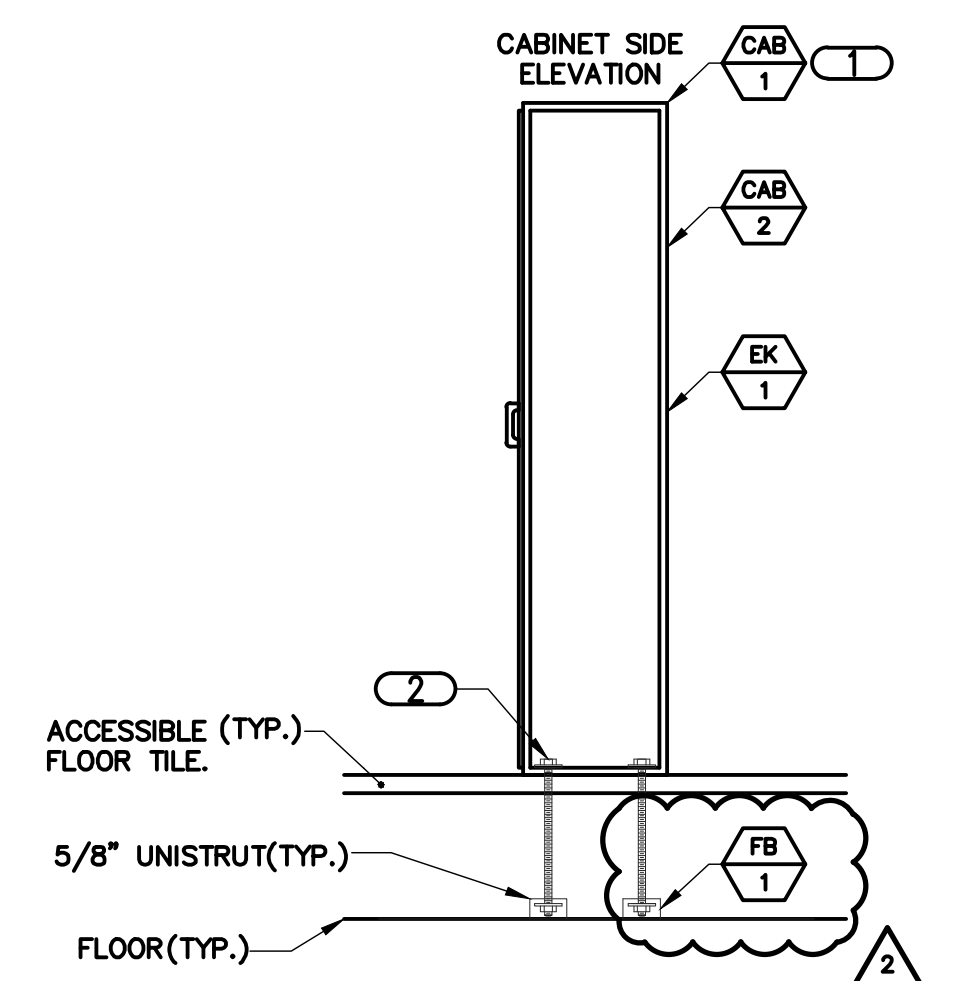
one eighth inch = one foot  
one quarter inch = one foot  
three eighths inch = one foot  
one half inch = one foot  
three quarters inch = one foot  
one inch = one foot  
one and one half inches = one foot  
two inches = one foot  
three inches = one foot  
four inches = one foot  
five inches = one foot  
six inches = one foot  
seven inches = one foot  
eight inches = one foot  
nine inches = one foot  
ten inches = one foot  
eleven inches = one foot  
twelve inches = one foot  
thirteen inches = one foot  
fourteen inches = one foot  
fifteen inches = one foot  
sixteen inches = one foot  
seventeen inches = one foot  
eighteen inches = one foot  
nineteen inches = one foot  
twenty inches = one foot  
twenty one inches = one foot  
twenty two inches = one foot  
twenty three inches = one foot  
twenty four inches = one foot  
twenty five inches = one foot  
twenty six inches = one foot  
twenty seven inches = one foot  
twenty eight inches = one foot  
twenty nine inches = one foot  
thirty inches = one foot  
thirty one inches = one foot  
thirty two inches = one foot  
thirty three inches = one foot  
thirty four inches = one foot  
thirty five inches = one foot  
thirty six inches = one foot  
thirty seven inches = one foot  
thirty eight inches = one foot  
thirty nine inches = one foot  
forty inches = one foot  
forty one inches = one foot  
forty two inches = one foot  
forty three inches = one foot  
forty four inches = one foot  
forty five inches = one foot  
forty six inches = one foot  
forty seven inches = one foot  
forty eight inches = one foot  
forty nine inches = one foot  
fifty inches = one foot  
fifty one inches = one foot  
fifty two inches = one foot  
fifty three inches = one foot  
fifty four inches = one foot  
fifty five inches = one foot  
fifty six inches = one foot  
fifty seven inches = one foot  
fifty eight inches = one foot  
fifty nine inches = one foot  
sixty inches = one foot  
sixty one inches = one foot  
sixty two inches = one foot  
sixty three inches = one foot  
sixty four inches = one foot  
sixty five inches = one foot  
sixty six inches = one foot  
sixty seven inches = one foot  
sixty eight inches = one foot  
sixty nine inches = one foot  
seventy inches = one foot  
seventy one inches = one foot  
seventy two inches = one foot  
seventy three inches = one foot  
seventy four inches = one foot  
seventy five inches = one foot  
seventy six inches = one foot  
seventy seven inches = one foot  
seventy eight inches = one foot  
seventy nine inches = one foot  
eighty inches = one foot  
eighty one inches = one foot  
eighty two inches = one foot  
eighty three inches = one foot  
eighty four inches = one foot  
eighty five inches = one foot  
eighty six inches = one foot  
eighty seven inches = one foot  
eighty eight inches = one foot  
eighty nine inches = one foot  
ninety inches = one foot  
ninety one inches = one foot  
ninety two inches = one foot  
ninety three inches = one foot  
ninety four inches = one foot  
ninety five inches = one foot  
ninety six inches = one foot  
ninety seven inches = one foot  
ninety eight inches = one foot  
ninety nine inches = one foot  
one hundred inches = one foot



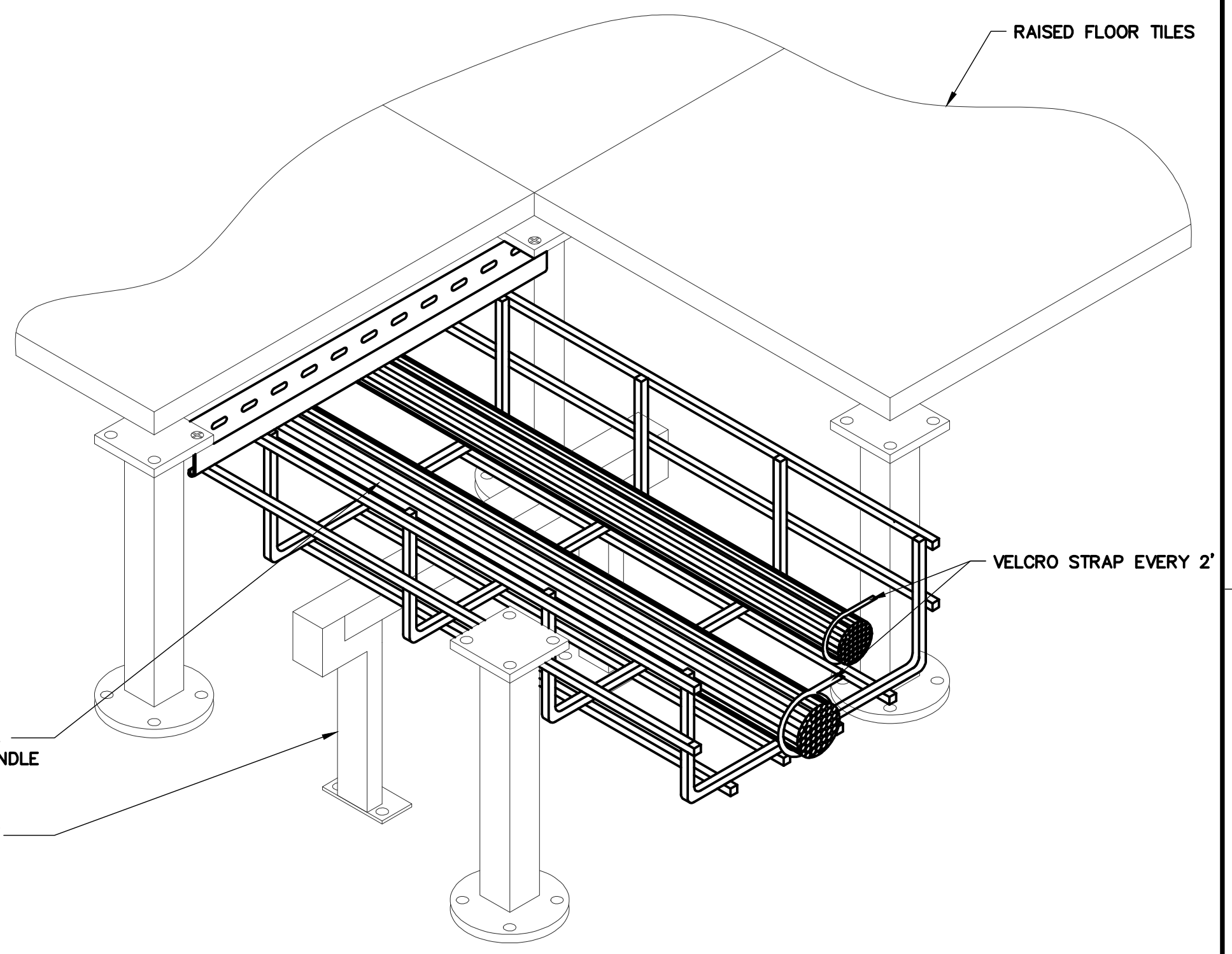
**1 COMPUTER ROOM SIGNAL REFERENCE GROUNDING DETAIL**  
**NO SCALE**  
**NOTES:**  
1. REFER TO MANUFACTURER SPECIFICATIONS FOR INSTALLATION DETAILS.  
**KEYNOTES:**  
1. BOND EVERY SIXTH RAISED-FLOOR PEDESTAL IN EACH DIRECTION TO THE SUBFLOOR GRID WITH A #6 AWG CONCENTRIC COPPER CONDUCTOR.



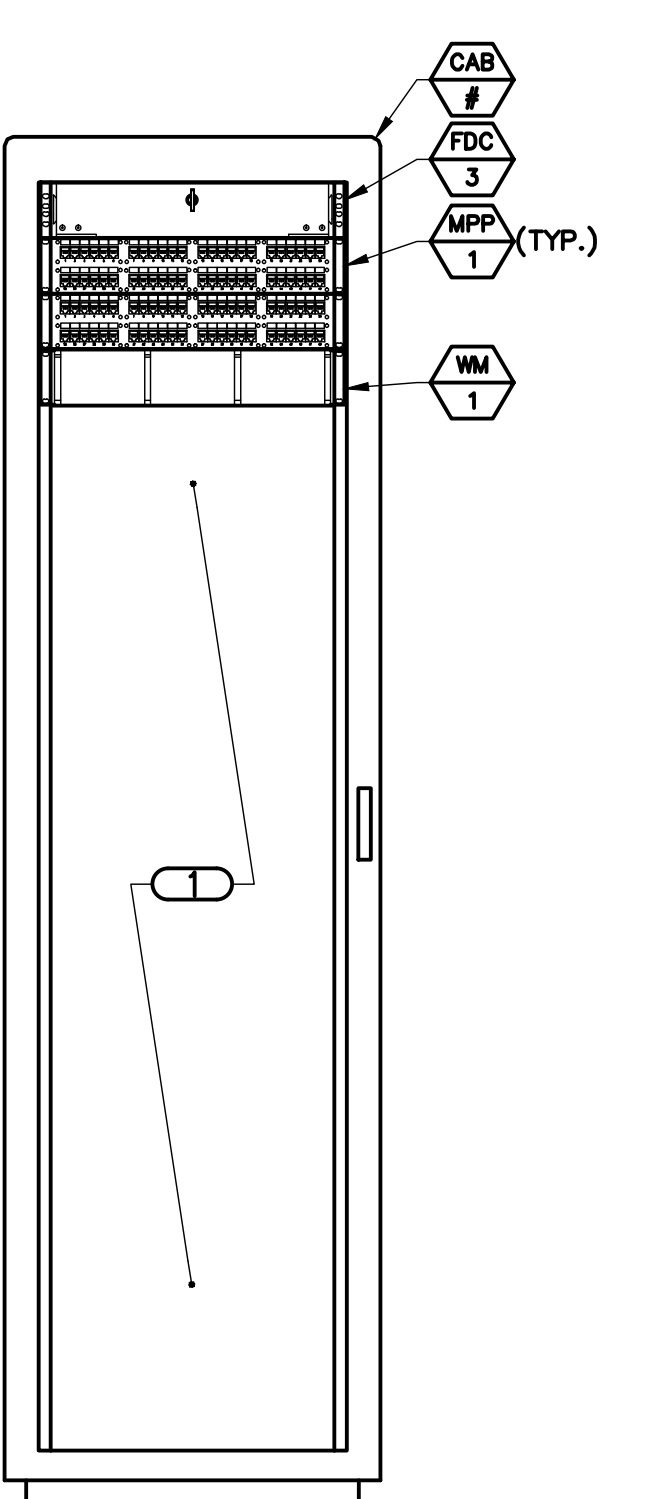
**2 EMERGENCY CALL STATION CAMERA MOUNT DETAIL**  
**NO SCALE**  
**NOTES:**  
1. REFER TO ARCHITECTURAL SPECIFICATIONS FOR BASE STRUCTURAL AND MOUNTING REQUIREMENTS.  
2. CONTRACTOR SHALL PROTECT FINISH AT ALL TIMES DURING CONSTRUCTION.  
3. CONTRACTOR SHALL ROUTE (2) 1" RGS CONDUITS FOR POWER AND LOW VOLTAGE, REQUIRED CABLES. REFER TO SITE PLAN SHEET ES.1 FOR LOCATIONS AND QUANTITIES.  
4. CONTRACTOR SHALL COORDINATE COLOR AND SIGNAGE WITH OWNER PRIOR TO ORDERING EMERGENCY CALL STATIONS.  
**KEYNOTES:**  
1. DATA OUTLET FOR OWNER PROVIDED CAMERA.



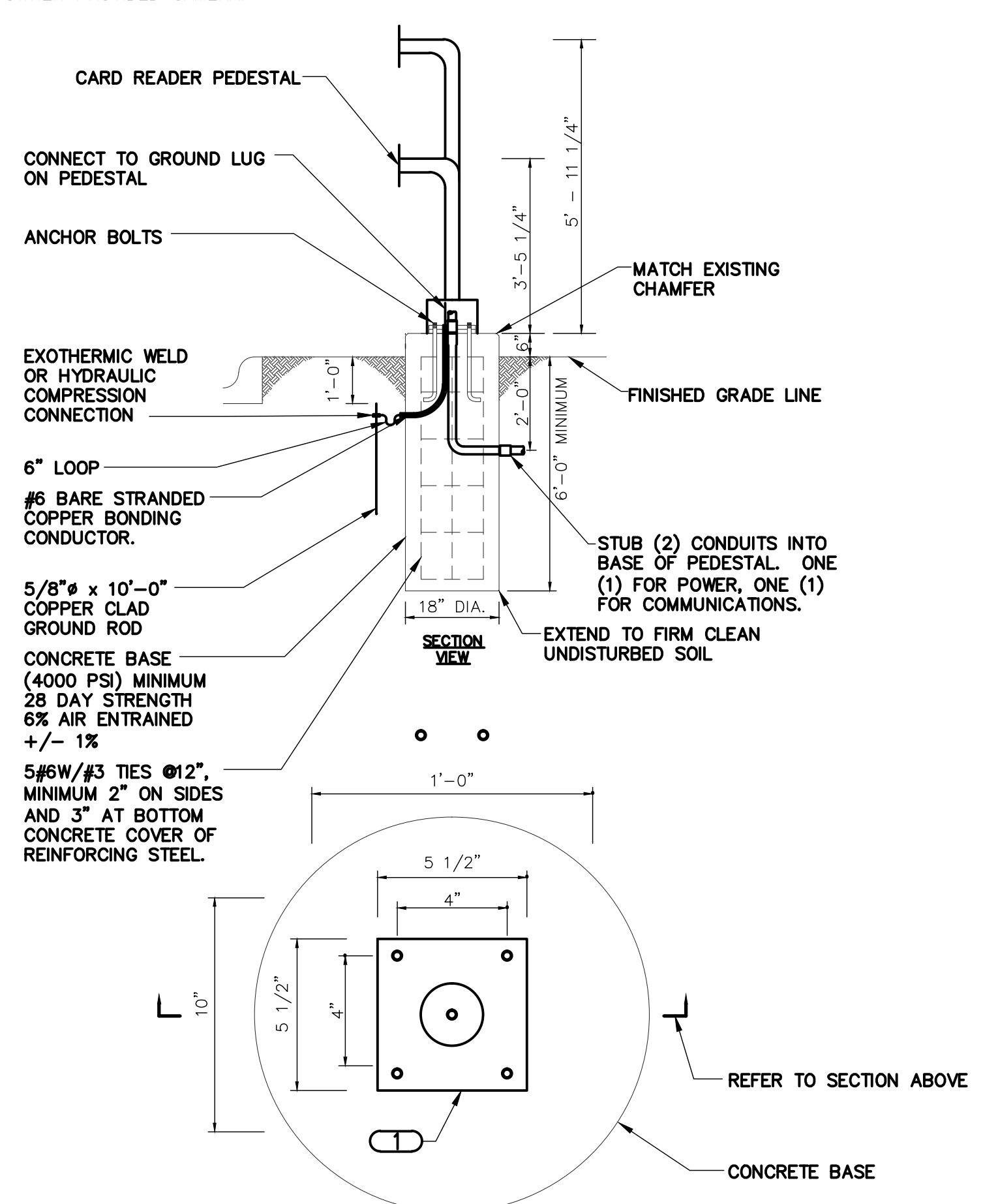
**3 CABINET RAISED FLOOR MOUNTING DETAIL**  
**NO SCALE**  
**NOTES:**  
1. CONTRACTOR SHALL PROVIDE AND INSTALL UNISTRUT UNDER ALL ROWS.  
2. COORDINATE INSTALLATION WITH ACCESSIBLE FLOORING SYSTEMS INSTALLER.  
3. REFER TO 5/TN301 FOR TYPICAL CABINET ELEVATIONS.  
**KEYNOTES:**  
1. CONTRACTOR SHALL BOLT RACKS TOGETHER AND SECURE TO CABLE TRAY OR LADDER RACK.  
2. BOLT EQUIPMENT CABINET OR RACK TO UNISTRUT UNDER FLOOR. REFER TO STRUCTURAL DRAWINGS FOR FLOOR DEPTH.



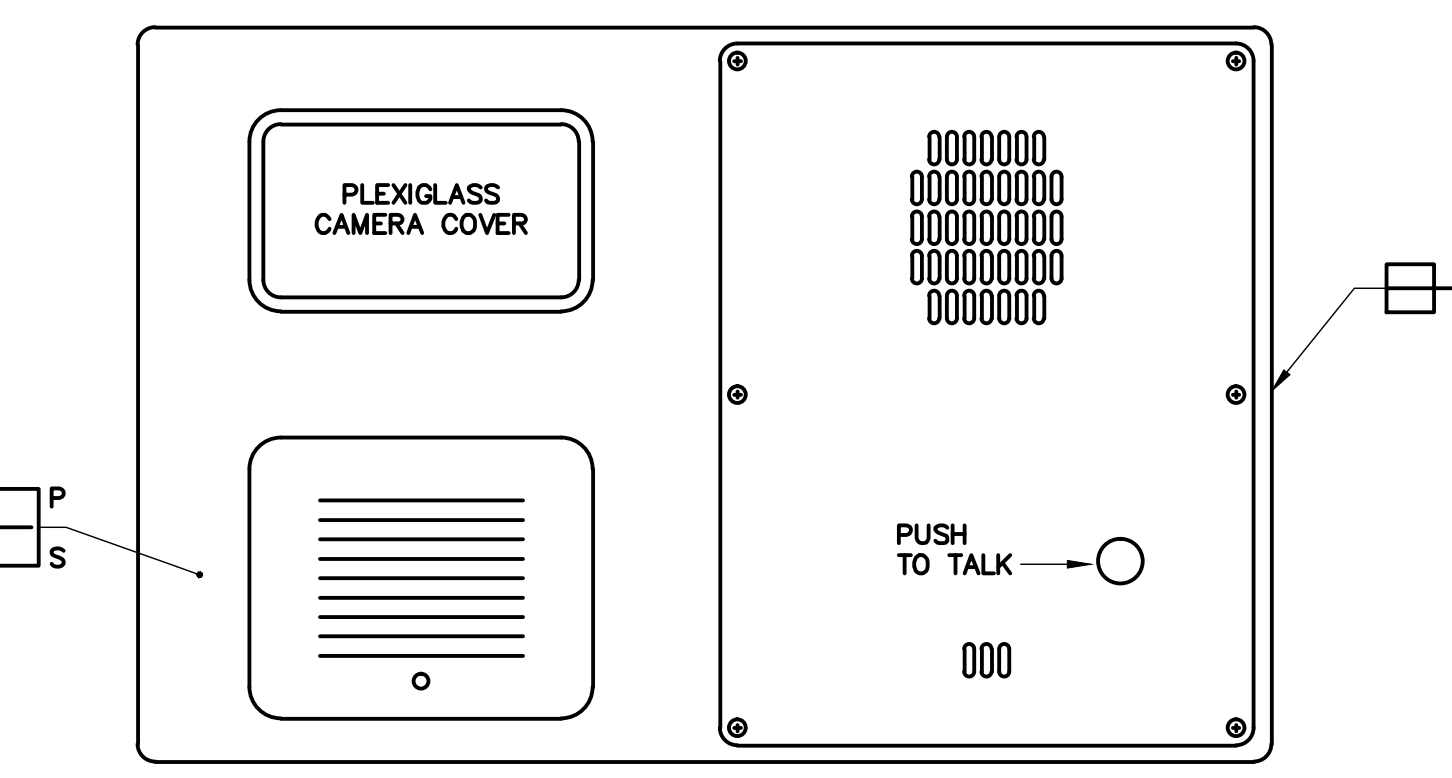
**4 RAISED FLOOR CABLE PATHWAY DIAGRAM**  
**NO SCALE**  
**NOTES:**  
1. CONTRACTOR SHALL MAINTAIN 8" MINIMUM DISTANCE BETWEEN LOW VOLTAGE CABLE AND ANY POWER CONDUIT OR BUSWAY, REFER TO 5/TN200 FOR PATHWAY ROUTING.  
2. REFER TO SHEET TD100 FOR ROUTING PATHWAY.  
**KEYNOTES:**  
1. MOUNT TO RAISED FLOOR SUPPORT AT 6" AFF.



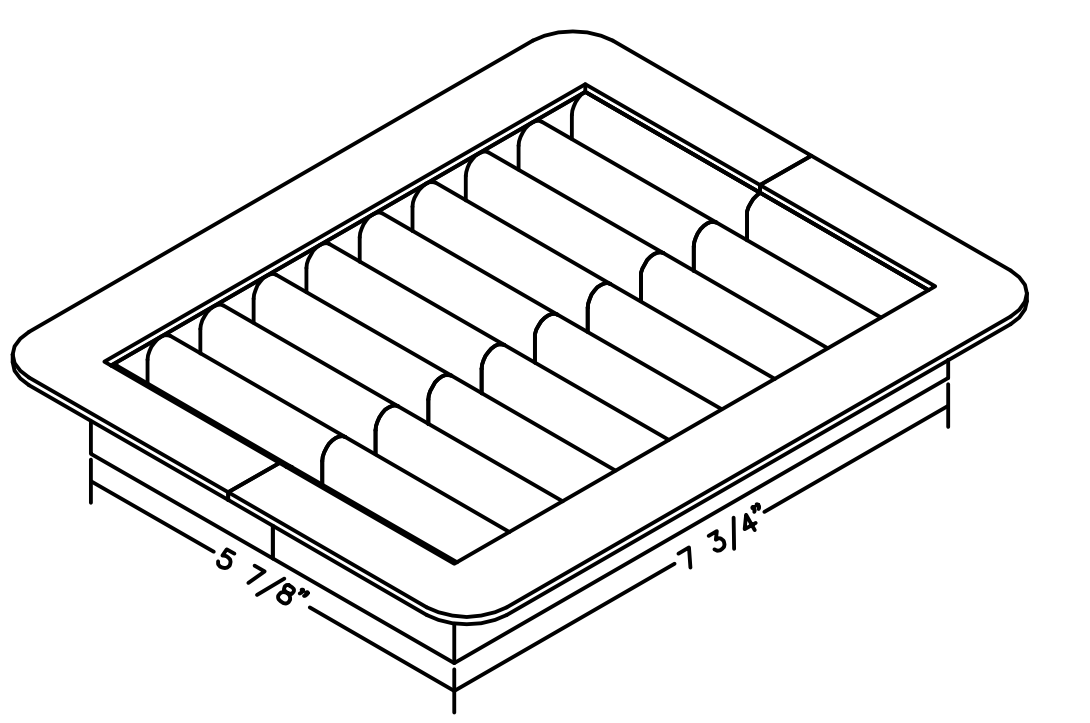
**5 TYPICAL CABINET ELEVATION**  
**NO SCALE**  
**NOTES:**  
1. REFER TO 3/TN301 FOR CABINET RAISED FLOOR MOUNTING DETAIL.  
2. TYPICAL OF O&T CABINETS 1-27 AND 35, 36 AND EES CABINETS 5 6 AND 16.  
**KEYNOTES:**  
1. SPACE FOR OWNER PROVIDED EQUIPMENT.



**6 CARD READER PEDESTAL**  
**NO SCALE**  
**NOTES:**  
1. THIS CONTRACTOR SHALL BE RESPONSIBLE TO FURNISH AND INSTALL THE ENTIRE CARD READER PEDESTAL.  
**KEYNOTES:**  
1. CAST BOLT PATTERN PER PRODUCT SPECIFICATION.



**7 OUTDOOR GATE PEDESTAL INTERFACE PANEL**  
**NO SCALE**  
**NOTES:**  
1. CONTRACTOR SHALL CUSTOM FABRICATE OUTDOOR GATE PEDESTAL INTERFACE PANEL.  
2. DEPTH OF PANEL SHALL BE SUFFICIENT TO HOUSE EDGE CONTROLLERS, CAMERA, POE SWITCH, POWER SUPPLY, INTERCOM AND CARD READER.  
3. LAYOUT OF DEVICES SHALL BE AS SHOWN ABOVE.  
4. ALL DEVICES AND PANEL SHALL BE WATERTIGHT AND WATER PROOF. PROVIDE A SHIELD OVER THE TOP OF THE PANEL TO REDUCE GLARE.  
5. PANEL BOX SHALL MOUNT ON PEDESTAL ARMS.



**8 FLOOR GROMMET DETAIL**  
**NO SCALE**  
**NOTES:**  
1. ALL DIMENSIONS ARE NOMINAL INSIDE CLEARANCES.  
2. REFER TO 4/TN200 FOR FLOOR GROMMET LOCATIONS.

<b>CONSULTANTS:</b> <div>STRUCTURAL ENGINEER: KPFF CONSULTING ENGINEERS 1630 DES PERES ROAD, SUITE 100 ST. LOUIS, MO 63131 PHONE: (314) 635-0524</div> <div>MECHANICAL/ELECTRICAL/PLUMBING: KJWW ENGINEERING CONSULTANTS 415 SUMNER DRIVE, SUITE 104 ST. LOUIS, MO 63143 PHONE: (314) 645-1132</div> <div>CODE CONSULTANT/FIRE PROTECTION: CODE CONSULTANTS, INC. 2043 WOODLAND PARKWAY, SUITE 300 ST. LOUIS, MO 63146 PHONE: (314) 991-2633</div> <div>CIVIL ENGINEER: STOCK &amp; ASSOCIATES CONSULTING ENGINEERS, INC. 257 CHESTERFIELD BUSINESS PARKWAY CHESTERFIELD, MO 63005 PHONE: (636) 530-9100</div> <div>AUTOMATIC TRANSPORT: LERCH BATES INC. 8089 S. LINCOLN STREET, SUITE 207 LITTLETON, CO 80122 PHONE: (720) 283-8182</div> <div>ESTIMATING: KIWAME BUILDING GROUP, INC. 1204 WASHINGTON AVENUE, SUITE 200 ST. LOUIS, MO 63103 PHONE: (314) 862-5344</div> <div>HAZARDOUS MATERIALS: ALTEC ENVIRONMENTAL CONSULTING, LLC P.O. BOX 17867 SHREVEPORT, LA 71138-0867 PHONE: (318) 687-3771</div> <div>IRRIGATION CONSULTANTS: IRM 9902 BAYVIEW TREE ST. LOUIS, MO 63126 PHONE: (318) 843-1481</div>				<b>CERTIFICATE OF AUTHORITY:</b> 	<b>ARCHITECT/ENGINEERS:</b> <b>CHRISTNER</b> <small>ARCHITECTS   DESIGNERS   PLANNERS   LANDSCAPE ARCHITECTS</small> 168 N. MERAMEC AVENUE   ST. LOUIS, MISSOURI 63105 TEL 314 725 2927   FAX 314 725 2928   CHRISTNERINC.COM	<b>Drawing Title</b> <b>TECHNOLOGY DETAILS</b>  <b>Approved: Project Director</b> 	<b>Project Title</b> <b>TENANT BUILDING</b>  <b>Location</b> <b>JEFFERSON BARRACKS DIVISION</b> <b>Date</b> 29 OCTOBER 2012 <b>Checked</b> DARHAR <b>Drawn</b> KEIEVE	<b>Project Number</b> <b>657-313D</b> <b>Building Number</b> <b>56</b> <b>Drawing Number</b> <b>TN301</b> Dwg. 127 of 153	<b>Office of Construction and Facilities Management</b> 
---	--	--	--	--------------------------------------	---	--	---	---	---

FULLY SPRINKLERED