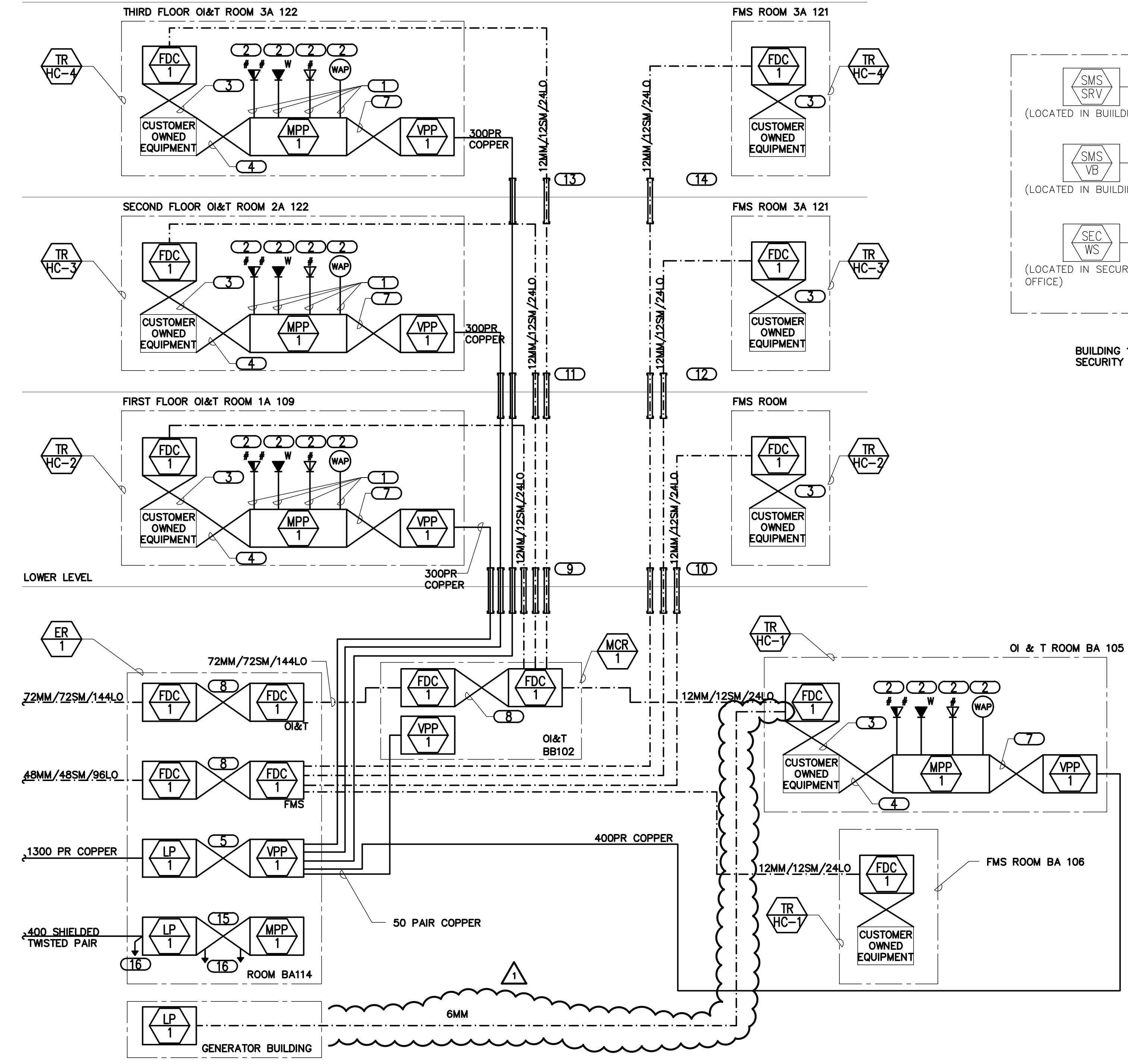
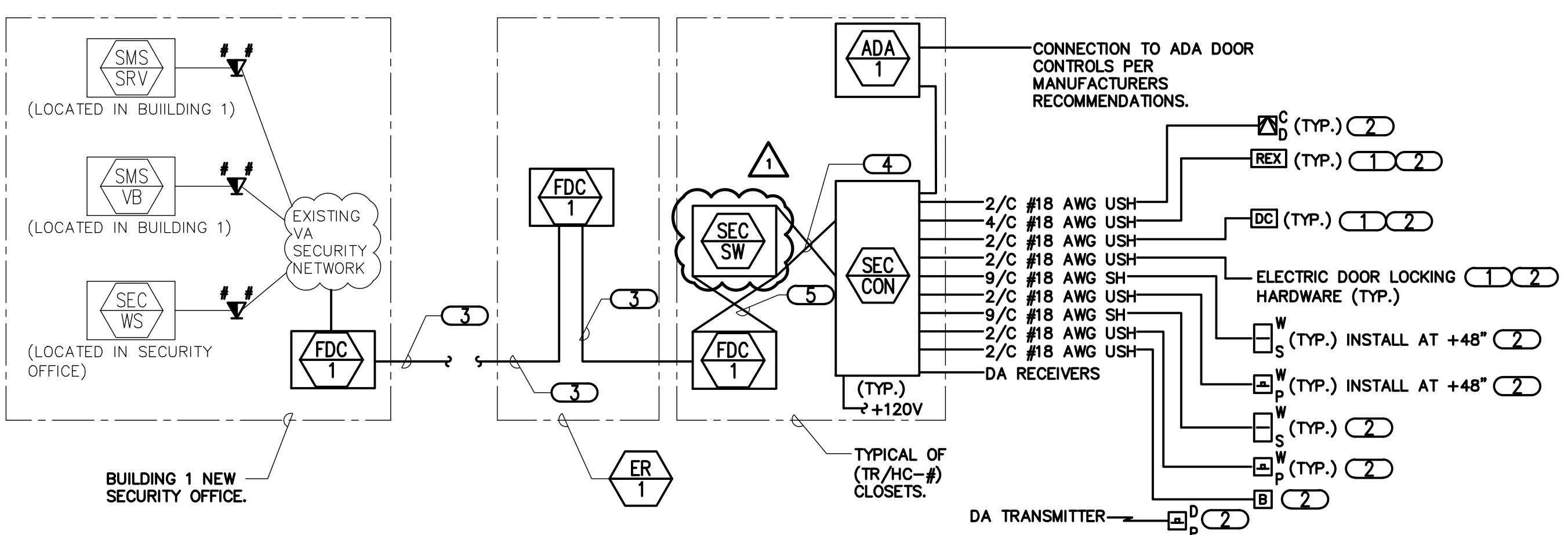


three inches = one foot
one and one half inches = one foot
one inch = one foot
three quarters inch = one foot
one half inch = one foot
three eighths inch = one foot
one quarter inch = one foot
one eighth inch = one foot



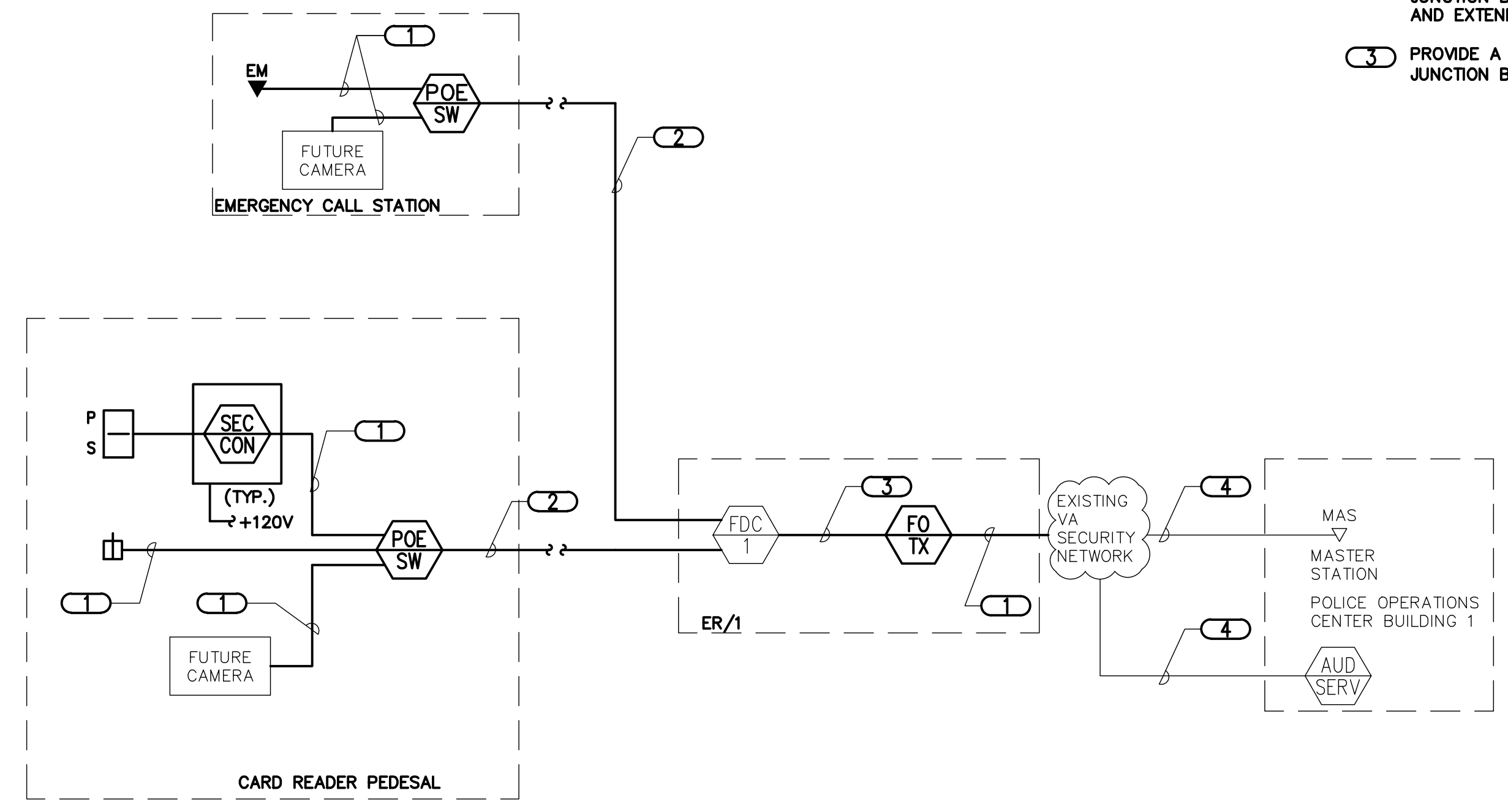
1 TECHNOLOGY FIBER DIAGRAM

- NO SCALE
- NOTES:
- THIS RISER IS DIAGRAMMATIC AND MAY NOT SHOW ACTUAL ROUTING OR QUANTITIES OF MATERIALS SHOWN. THIS RISER IS SHOWN FOR CLARIFICATION OF CONNECTION LOCATIONS AND CABLE TYPE. ALL INFORMATION OUTLETS ARE TYPICAL OF THE OUTLETS IN THE AREA SHOWN. SEE PLANS FOR MORE SPECIFIC ROUTING INFORMATION. SEE SPECIFICATIONS FOR ADDITIONAL REQUIREMENTS.
 - LEGEND:
 - FIBER
 - COPPER
 - MM - MULTIMODE FIBER OPTIC CABLE (62.5µm)
 - SM - SINGLEMODE FIBER OPTIC CABLE
 - LO - LASER OPTIMIZED FIBER OPTIC CABLE (50µm)
 - OI & T - OFFICE OF INFORMATION AND TECHNOLOGY
 - FMS - FACILITIES MANAGEMENT SERVICE
- KEYNOTES:
- 23 GAUGE, 4-PAIR, CATEGORY 6, UNSHIELDED TWISTED PAIR CABLE TO VOICE & DATA LOCATIONS, SEE SPECIFICATIONS.
 - REFER TO INFORMATION OUTLET SCHEDULE TN500 FOR DETAILS.
 - STRUCTURED CABLING FIBER OPTIC PATCH CORDS. REFER TO SPECIFICATIONS.
 - RJ-45 TO RJ-45 CATEGORY 6 UTP PATCH CORDS. REFER TO SPECIFICATIONS.
 - CROSS-CONNECT 100-PAIR PER BACKBONE RISER CABLE TO THE INCOMING COPPER BACKBONE CABLE.
 - FOUR (4) 4" EMT CONDUIT SLEEVES. POPULATE AS FOLLOWS:
 - (1) SLEEVE FOR COPPER BACKBONE CABLING.
 - (1) SLEEVE FOR FIBER BACKBONE CABLING.
 - (1) SLEEVE FOR 4-PAIR CATEGORY 6 HORIZONTAL CABLING.
 - (1) SLEEVE SPARE.
 - 110 TO RJ-45 CATEGORY 6 UTP PATCH CORDS. REFER TO SPECIFICATIONS.
 - FIBER OPTIC PATCH CORDS MM TO MM, LO TO LO AND SM TO SM REFER TO SPECIFICATIONS.
 - NINE (9) 4" CONDUITS THROUGH CEILING TO ROOM 1A109.
 - NINE (9) 4" CONDUITS THROUGH CEILING TO ROOM
 - SIX (6) 4" CONDUITS THROUGH CEILING TO ROOM 2A122.
 - SIX (6) 4" CONDUITS THROUGH CEILING TO ROOM 2A121.
 - THREE (3) 4" CONDUITS THROUGH CEILING TO ROOM 3A122.
 - THREE (3) 4" CONDUITS THROUGH CEILING TO ROOM 3A121.
 - CROSS-CONNECT 100-PAIR SHIELDED PER BACKBONE RISER CABLE TO THE INCOMING COPPER BACKBONE CABLE.
- CONNECT THE SHIELD OF THE 400 PAIR SHIELDED AND 100 PAIR SHIELDED TWISTED PAIR CABLE TO TELECOMMUNICATIONS GROUND BUSBAR.



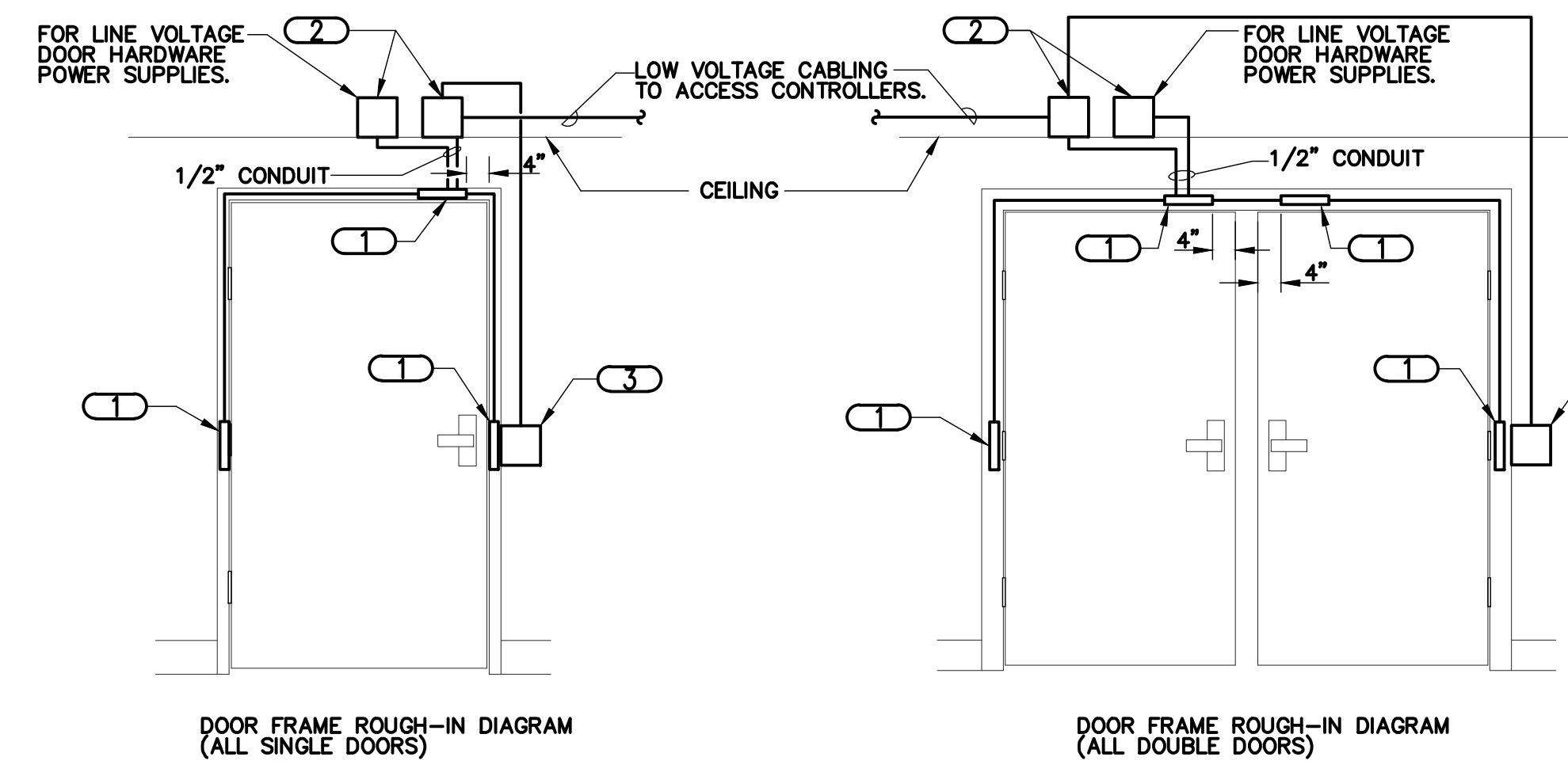
2 ACCESS CONTROL RISER DIAGRAM

- NO SCALE
- NOTES:
- THIS DIAGRAM IS DIAGRAMMATIC AND MAY NOT SHOW ACTUAL DEVICE QUANTITIES OR LOCATIONS. ALL DEVICES SHOWN ARE TYPICAL AND MAY NOT REFLECT EVERY WIRE OR CONNECTION THAT MUST BE MADE. WIRING SHOWN ON THIS DIAGRAM REFLECTS THE REQUIREMENTS FOR THE BASIS OF DESIGN MANUFACTURER. ANY CHANGES REQUIRED DUE TO THE T.C.'S SELECTION OF AN ALTERNATE MANUFACTURER, INCLUDING ANY POWER REQUIRED FOR FIELD LOCATED SECURITY CONTROLLERS, SHALL BE INCLUDED IN THE T.C.'S BID.
 - ALL ACCESS SYSTEMS SHALL BE ON THEIR OWN NETWORK. THEY ARE NOT ALLOWED ON THE VA LAN.
- KEYNOTES:
- THE REQUEST TO EXIT, DOOR CONTACT AND LOCKING DEVICE ITEMS ARE SHOWN AS [CS] ON THE FLOOR PLANS.
 - REFER TO FLOOR PLANS FOR LOCATIONS AND LAYOUT OF SECURITY DEVICES.
 - CONTRACTOR SHALL UTILIZE FIBER OPTIC CABLE INSTALLED UNDER THIS CONTRACT. REFER TO 1/TN400 FOR TECHNOLOGY RISER DIAGRAM.
 - RJ45, CATEGORY 6 PATCH CORDS, REFER TO SPECIFICATIONS.
 - SINGLE MODE FIBER OPTIC PATCH CORDS, REFER TO SPECIFICATIONS.



4 SITE ACCESS CONTROL/EMERGENCY CALL STATION/INTERCOM FIBER DIAGRAM

- NO SCALE
- NOTES:
- THIS DIAGRAM IS DIAGRAMMATIC AND MAY NOT SHOW ACTUAL DEVICE QUANTITIES OR LOCATIONS. ALL DEVICES SHOWN ARE TYPICAL AND MAY NOT REFLECT EVERY WIRE OR CONNECTION THAT MUST BE MADE. WIRING SHOWN ON THIS DIAGRAM REFLECTS THE REQUIREMENTS FOR THE BASIS OF DESIGN MANUFACTURER. ANY CHANGES REQUIRED DUE TO THE T.C.'S SELECTION OF AN ALTERNATE MANUFACTURER, INCLUDING ANY POWER REQUIRED FOR FIELD LOCATED SECURITY CONTROLLERS, SHALL BE INCLUDED IN THE T.C.'S BID.
 - LOCATE MASTER STATION IN SECURITY OFFICE LOCATED IN BUILDING 1. UTILIZE EXISTING NETWORK CABLING LOCATIONS IN SECURITY OFFICE. COORDINATE LOCATION WITH OWNER PRIOR TO INSTALLATION.
- KEYNOTES:
- CATEGORY 6 PATCH CORD. REFER TO SPECIFICATIONS.
 - SIX STRANDS MM FIBER OPTIC CABLE. REFER TO SPECIFICATIONS.
 - FIBER OPTIC PATCH CORD. REFER TO SPECIFICATIONS.
 - CATEGORY 6 WORKSTATION CORD. REFER TO SPECIFICATIONS.
 - CARD READER CABLE. REFER TO SPECIFICATIONS.



3 DOOR ROUGH-IN AND WIRING DIAGRAMS

- NO SCALE
- NOTES:
- WIRING SHOWN ON THESE DIAGRAMS IS FOR BIDDING PURPOSES AND REPRESENTS MINIMUM REQUIREMENTS. COORDINATE EXACT REQUIREMENTS WITH SELECTED MANUFACTURER.
 - DETAILS ABOVE MAY NOT BE REPRESENTATIVE OF SPECIFIC DOOR SWING DIRECTION. MIRROR DETAIL AS REQUIRED.
 - WIRING SHOWN IN CONFIGURATION DETAILS SHALL UTILIZE RELEVANT JUNCTION BOXES SHOWN IN ROUGH-IN DETAIL. ALL WIRING IS CONCEALED IN DOOR FRAME OR DOOR. NO EXPOSED CABLING IS ALLOWED.
 - CONFIGURATIONS SHOWN ARE DIAGRAMMATIC, INTENDED TO DESCRIBE THE SECURITY REQUIREMENTS OF THE DOORS. THEY ARE NOT INTENDED TO ACCURATELY REPRESENT DOOR SIZE, DOOR FUNCTIONALITY OR DOOR HARDWARE. REFER TO ARCHITECTURAL DOOR HARDWARE GROUPS AND SPECIFICATION FOR COMPLETE INFORMATION.
 - ALL DOOR POSITION SWITCHES SHALL BE RECESSED, CONCEALED TYPE UNLESS OTHERWISE NOTED.
 - ALL CABLING IN WALLS AND WHEN EXPOSED ON VERTICAL SURFACES, (I.E., THE OVERHEAD DOOR FRAME) SHALL BE ROUTED IN MINIMUM 1/2" EMT CONDUIT. EXPOSED CABLING TRAVELING HORIZONTALLY ALONG THE CEILING DECK OR ABOVE A LAY-IN CEILING MAY BE PLENUM RATED EXPOSED CABLING.
 - ELECTRIC HINGE MONITORS ARE NOT ACCEPTABLE REPLACEMENTS FOR THE CONCEALED DOOR POSITION SWITCHES.
 - REFER TO FLOOR PLANS FOR CARD READER LOCATIONS.
- KEYNOTES:
- PROVIDE A JUNCTION BOX IN THE DOOR FRAME WHERE SHOWN ON THE DETAIL, ROUGH-IN SHALL BE PROVIDED WHETHER THE CURRENT SECURITY SCHEME UTILIZES THEM OR NOT. CONNECT THE JUNCTION BOXES IN THE VERTICAL SECTIONS OF THE DOOR FRAME TO THE BOX IN THE HEADER WITH 3/8" FLEXIBLE CONDUIT.
 - MOUNT 2 DOUBLE GANG BACKBOXES WITH BLANK COVER PLATES ABOVE THE CEILING. MAINTAIN ACCESS TO JUNCTION BOX WHERE CEILING IS A GYPSUM BOARD CEILING, LOCATE BOXES ABOVE NEAREST LAY-IN CEILING AND EXTEND CONDUITS TO THIS LOCATION.
 - PROVIDE A JUNCTION BOX FOR CARD READER. PROVIDE ONE (1) 1 1/4" CONDUIT TO ACCESS CONTROL JUNCTION BOX AS SHOWN. MOUNT TOP OF BOX AT 48" AFF MAX.

CONSULTANTS: STRUCTURAL ENGINEER: KPF CONSULTING ENGINEERS 1630 DES PERES ROAD, SUITE 100 ST. LOUIS, MO 63131 PHONE: (314) 835-0524 MECHANICAL/ELECTRICAL/PLUMBING: KJWW ENGINEERING CONSULTANTS 415 SUMNER DRIVE, SUITE 104 ST. LOUIS, MO 63143 PHONE: (314) 645-1132 CODE CONSULTANT/FIRE PROTECTION: LERCH BATES INC. 2043 WOODLAND PARKWAY, SUITE 300 ST. LOUIS, MO 63146 PHONE: (314) 991-2633 CIVIL ENGINEER: KJWW ENGINEERING CONSULTANTS 257 CHESTERFIELD BUSINESS PARKWAY CHESTERFIELD, MO 63005 PHONE: (636) 530-9100 AUTOMATIC TRANSPORT: LERCH BATES INC. 8089 S. LINCOLN STREET, SUITE 207 LITTLETON, CO 80122 PHONE: (720) 283-8182 ESTIMATING: KJWW BUILDING GROUP, INC. 1224 WASHINGTON AVENUE, SUITE 200 ST. LOUIS, MO 63103 PHONE: (314) 862-5344 HAZARDOUS MATERIALS: ALTEC ENVIRONMENTAL CONSULTING, LLC P.O. BOX 17867 SHREVEPORT, LA 71138-0867 PHONE: (338) 687-3771 IRRIGATION CONSULTANTS: IRM 9902 BANYON TREE ST. LOUIS, MO 63126 PHONE: (318) 843-1481			CERTIFICATE OF AUTHORITY: JAMES W. JAMES Professional Engineer No. 2006-00099 20 JANUARY 2006		ARCHITECT/ENGINEERS: CHRISTNER ARCHITECTS DESIGNERS PLANNERS LANDSCAPE ARCHITECTS 168 N. MERAMEC AVENUE ST. LOUIS, MISSOURI 63105 TEL 314 725 2927 FAX 314 725 2928 CHRISTNERINC.COM		Drawing Title TECHNOLOGY RISER DIAGRAMS Approved: Project Director <i>John Sanders</i>		Project Title TENANT BUILDING Location JEFFERSON BARRACKS DIVISION Date 29 OCTOBER 2012 Checked DARHAR Drawn KEIEVE		Project Number 657-313D Building Number 56 Drawing Number TN400 Dwg. 128 of 153		Office of Construction and Facilities Management Department of Veterans Affairs	
---	--	--	--	--	--	--	---	--	---	--	--	--	---	--