

three inches = one foot

one and one half inches = one foot

one inch = one foot

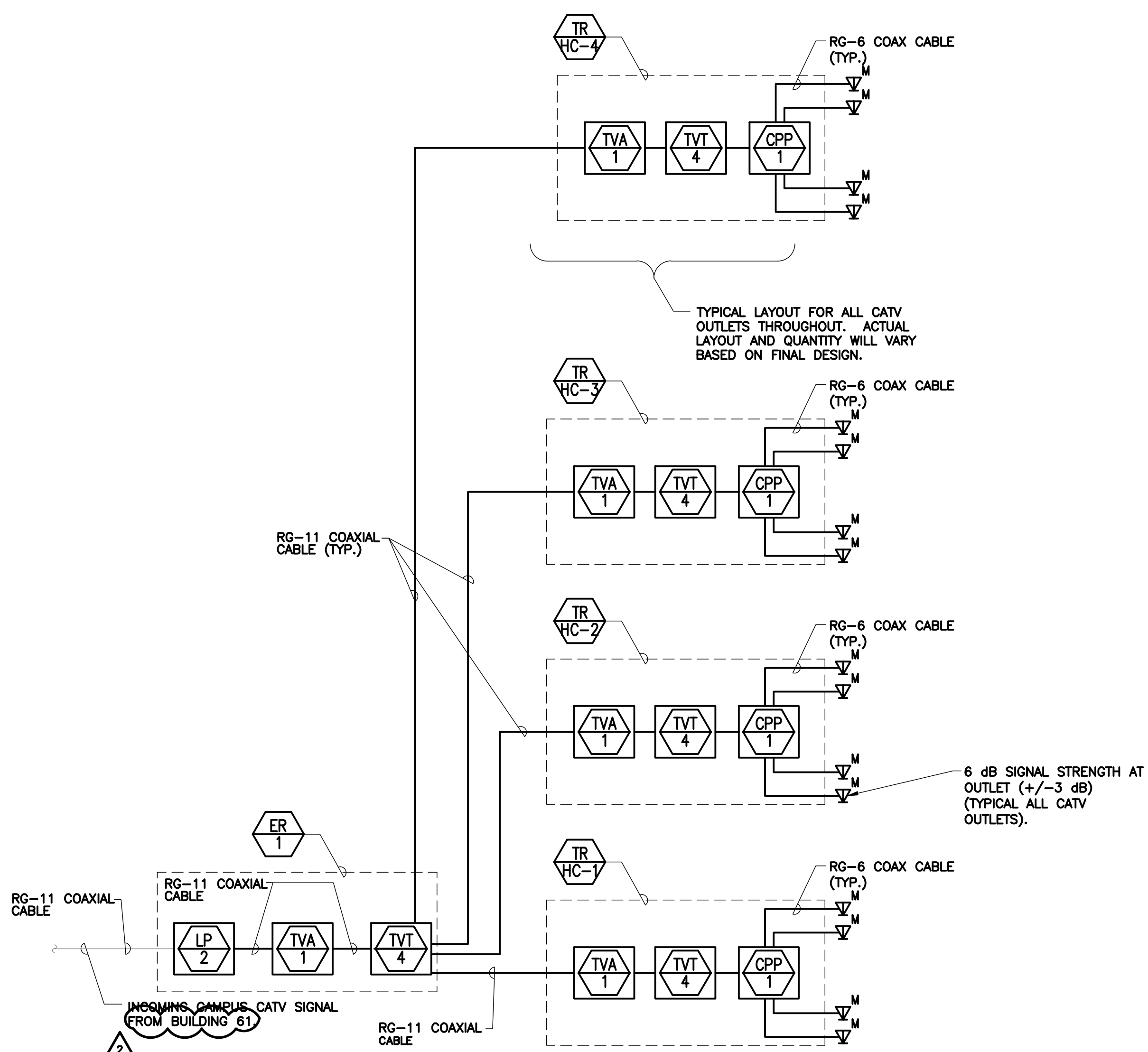
three quarters inch = one foot

one half inch = one foot

three eighths inch = one foot

one quarter inch = one foot

one eighth inch = one foot



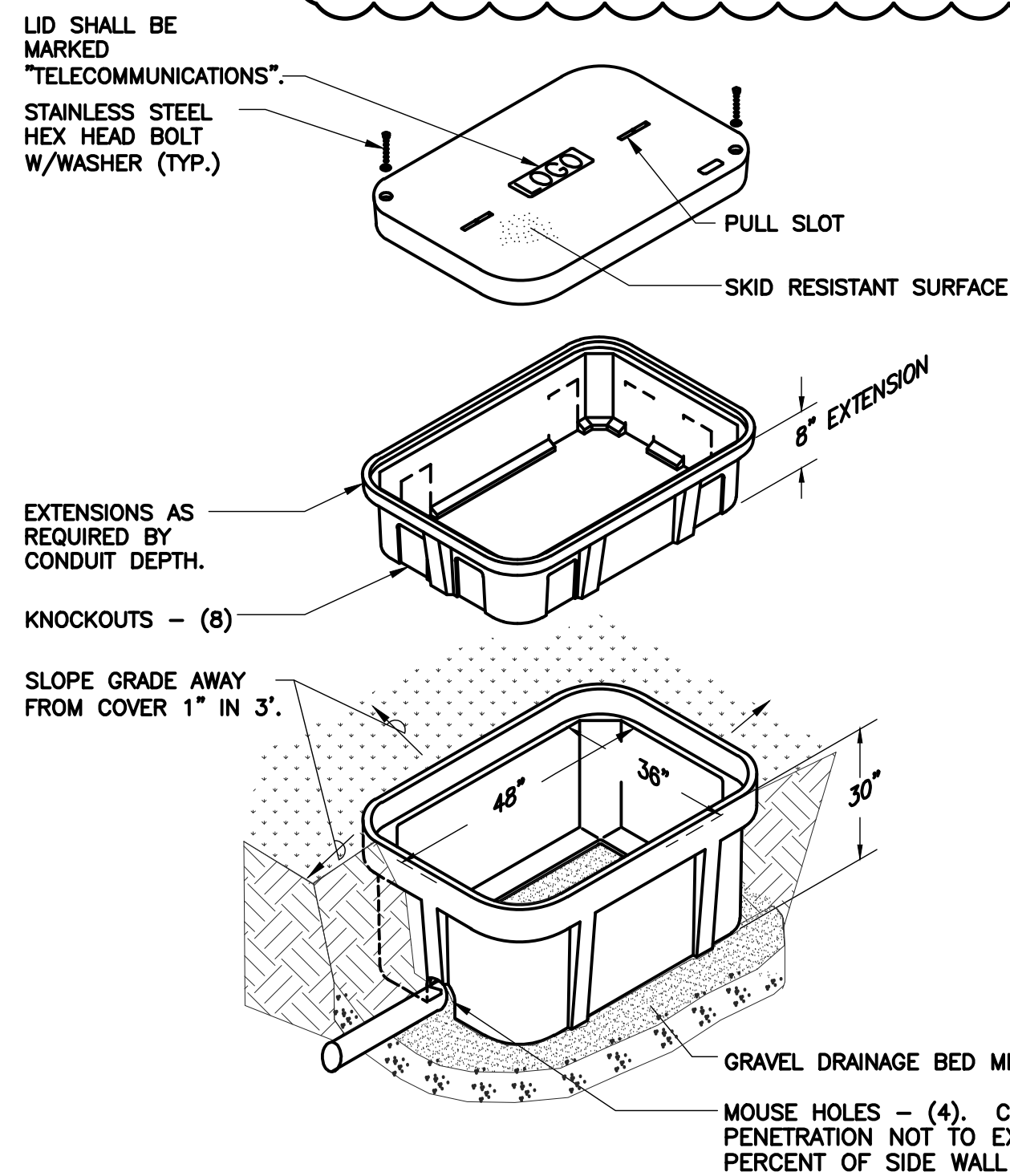
### 1 PARTIAL CABLE TV FIBER DIAGRAM

NO SCALE

NOTES:

- CONTRACTOR TO PROVIDE CATV SYSTEM TO ALLOW 6dB +/- 3dB OF OUTPUT AT ALL "V" OUTLETS, ACTUAL TAP/SPLITTER SETTINGS, LAYOUT, AND AMP SIZING/QUANTITY TO BE INCLUDED IN CONTRACTOR'S FINAL DESIGN. SEE SPECIFICATIONS FOR ADDITIONAL REQUIREMENTS.
- ALL CABLE IS TO BE RG-6 COAXIAL UNLESS OTHERWISE NOTED.
- SEE PLANS FOR QUANTITY OF CABLES AND JACKS TO BE INSTALLED AT EACH TELEVISION OUTLET.

- CONTRACTOR SHALL RELOCATE EXISTING CAMPUS TELEVISION SYSTEM FROM BUILDING 61, CONTRACTOR SHALL COORDINATE ALL DOWN-TIME AND MOVE SCHEDULE WITH OWNER TO MINIMIZE DOWNTIME. ALL RACKS AND FIBER-OPTIC CABLE AND TRANCEIVERS SHALL BE IN PLACE AND READY TO ACCEPT RELOCATED HEAD-END EQUIPMENT PRIOR TO MOVE. REFER TO TD101 FOR HEAD END LOCATION. REFER TO TND01 FOR BUILDING 61 LOCATION.

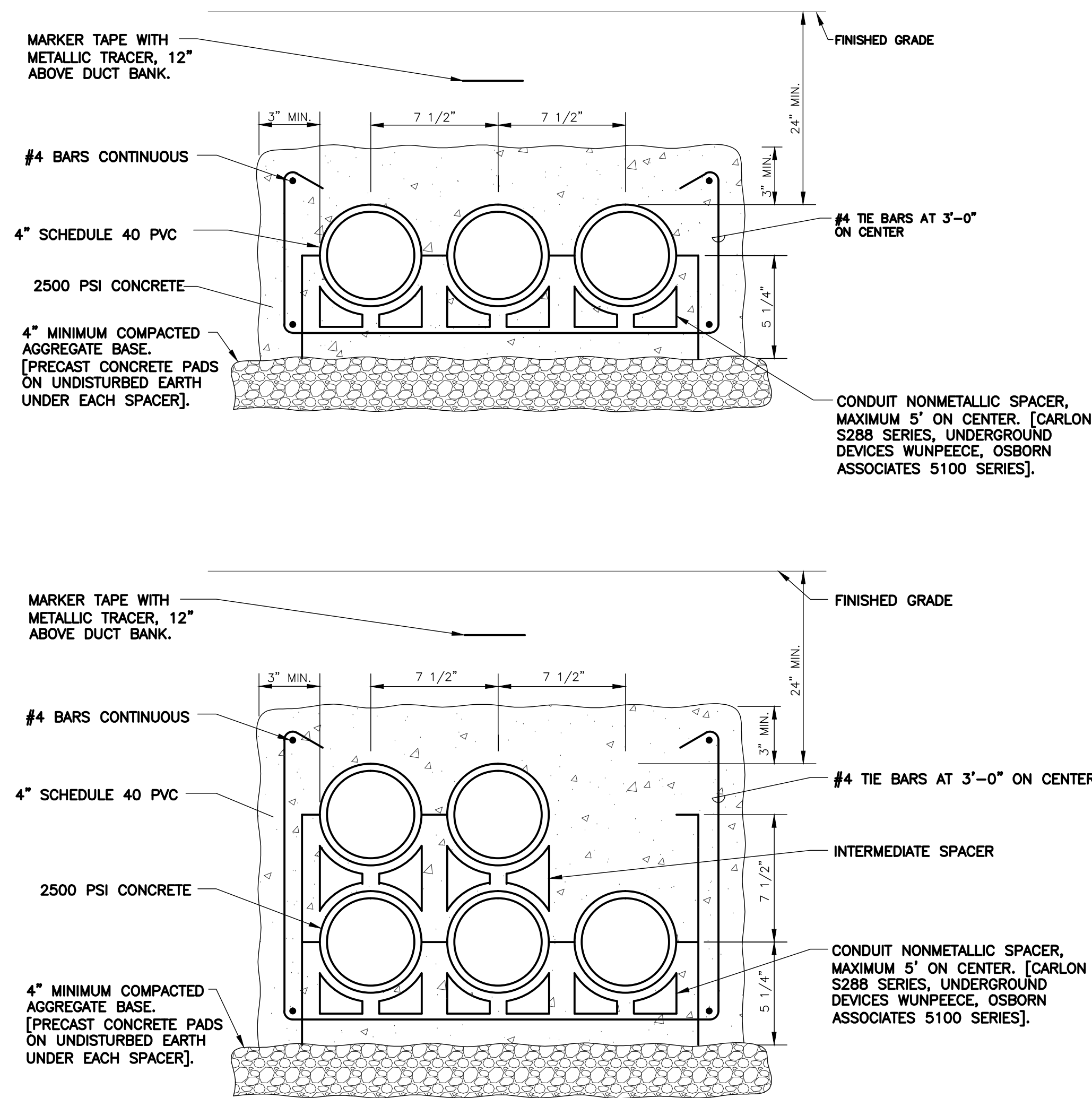


### 4 EXTERIOR HAND HOLE DETAIL

NO SCALE

NOTES:

- ALL DIMENSIONS ARE NOMINAL INSIDE CLEARANCES.
- ALL CONDUITS SHALL ENTER HAND HOLE AT 30° ANGLE AND SHALL NOT EXTEND INTO HAND HOLE MORE THAN 4".

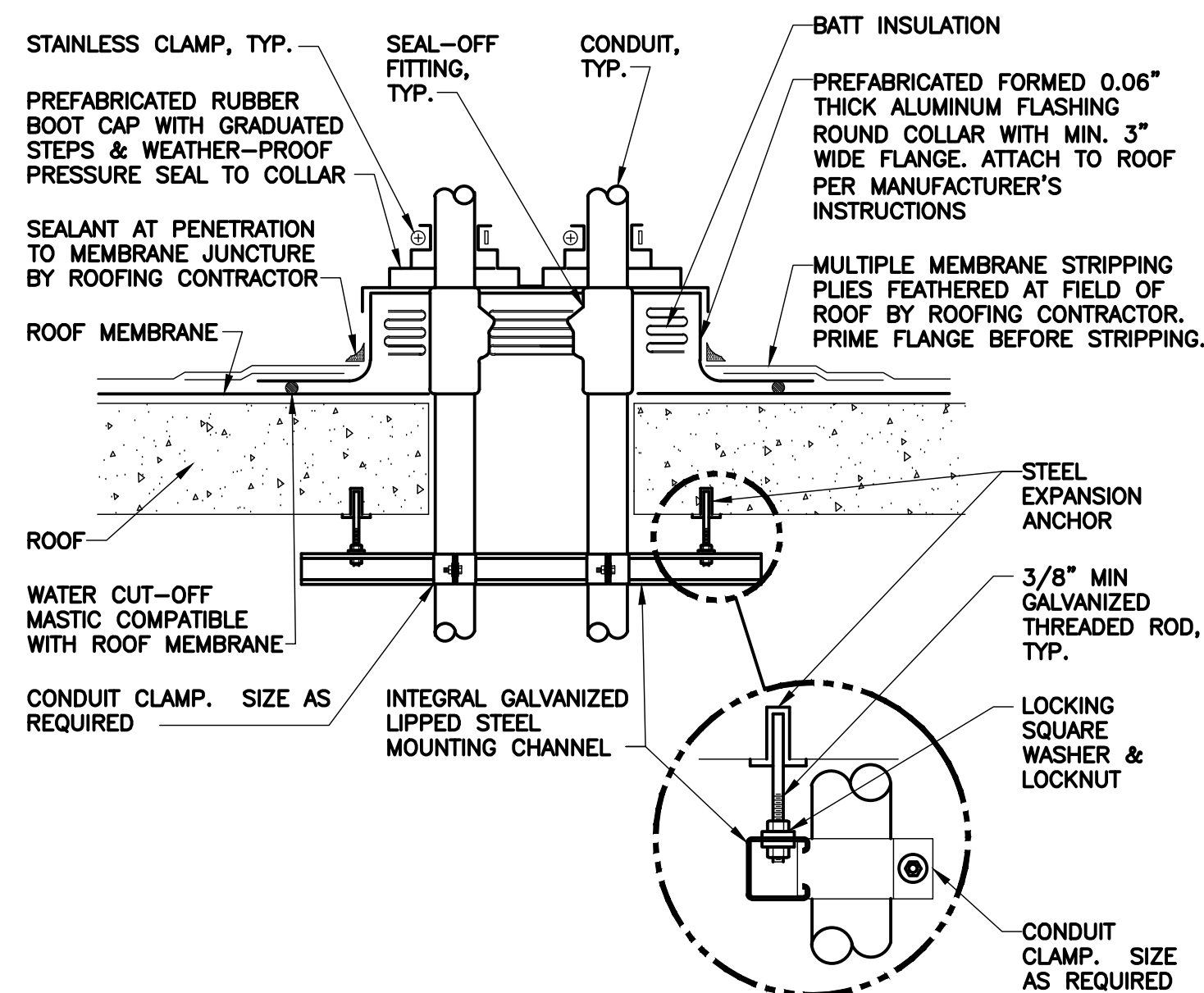


### 2 DUCT BANK DETAIL

NO SCALE

NOTES:

- INSTALL 2000 lb TENSILE STRENGTH BRAIDED POLYPROPYLENE PULL CORD IN ALL CONDUITS.
- TRENCHING AND BACKFILL ACCORDING TO SPECIFICATIONS.
- MINIMUM OF 4'-0" CLEAR BETWEEN ADJACENT DUCTBANKS.

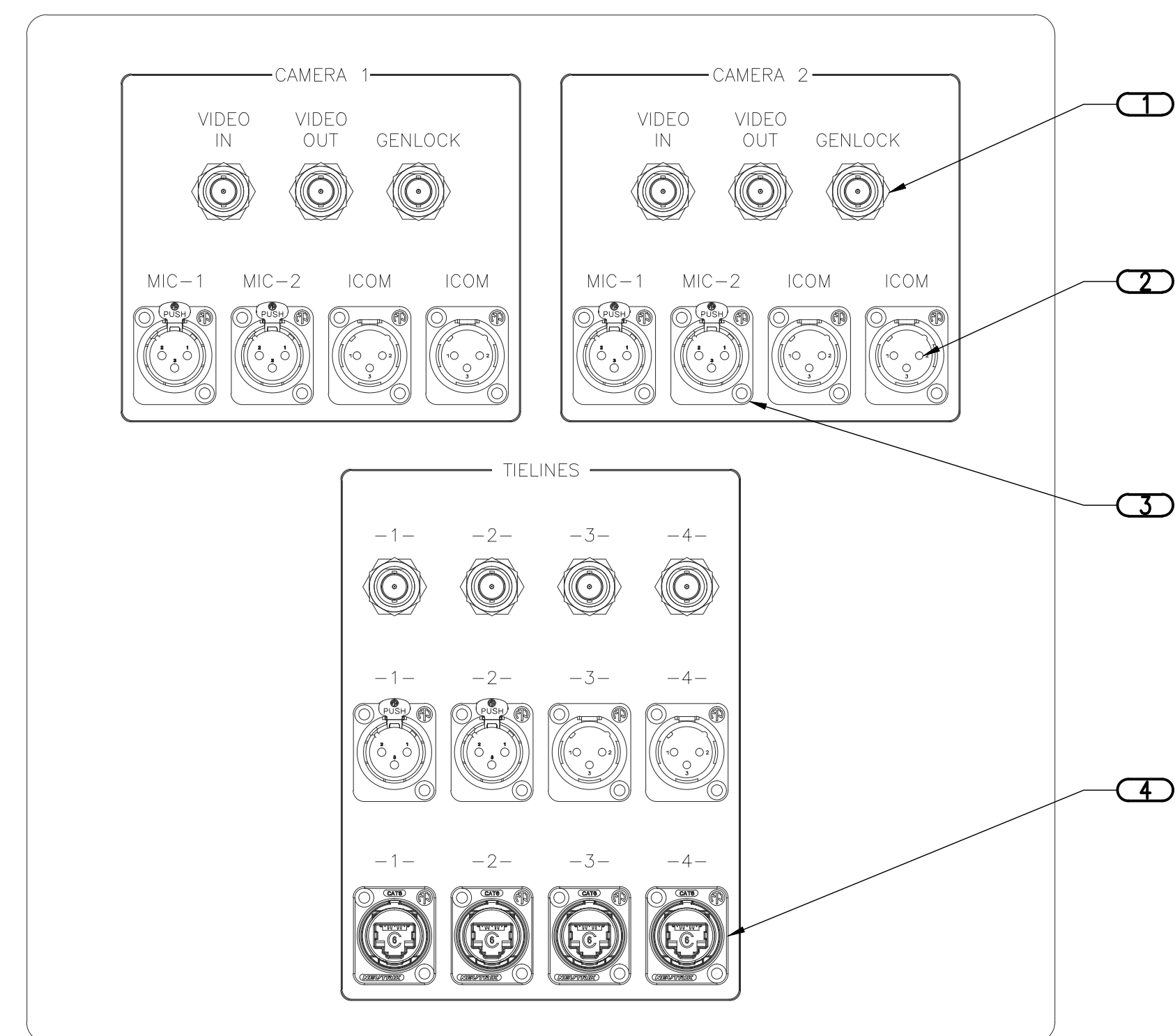


### 6 ROOF PENETRATION DETAIL

NTS

NOTES:

- MAINTAIN A MINIMUM CLEARANCE OF 12" [308mm] ON ALL SIDES OF ROOF PENETRATION FROM WALLS, CURBS, AND OTHER PROJECTIONS TO FACILITATE PROPER FLASHING.
- FLANGES OF ADJACENT FLASHINGS SHALL NOT BE CUT OR OVERLAPPED.
- VERIFY ROOF & STRUCTURAL SYSTEM WITH ARCHITECT.
- COORDINATE FLASHING INSTALLATION WITH ROOFING CONTRACTOR TO ENSURE PROPER METHODS & MATERIALS ARE USED TO MAINTAIN ROOF WARRANTY.



### 3 VIDEO PRODUCTION PANEL DETAIL

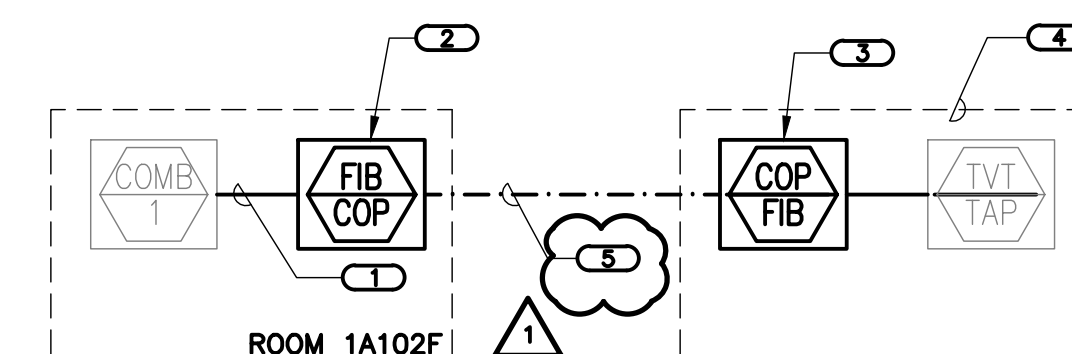
NO SCALE

NOTES:

- CONTRACTOR SHALL CUSTOM FABRICATE VIDEO PRODUCTION PANEL: USING .125" 6061 ALUMINUM.
- DEPTH OF PANEL BOX SHALL BE SUFFICIENT TO HOUSE CONNECTORS, CABLE AND CONDUIT.
- LAYOUT OF DEVICES SHALL BE AS SHOWN ABOVE.
- PANEL BOX SHALL BE RECESSED INTO WALL.

KEYNOTES:

- 1 BULKHEAD BNC VIDEO CONNECTOR
- 2 MALE XLR CONNECTOR
- 3 FEMALE XLR CONNECTOR
- 4 BULKHEAD CAT6 CONNECTOR



### 7 PARTIAL CAMPUS CATV DISTRIBUTION

NTS

NOTES:

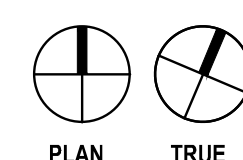
- THIS RISER IS DIAGRAMATIC AND MAY NOT SHOW ACTUAL ROUTING OR QUANTITIES OF MATERIALS SHOWN. THIS RISER IS SHOWN FOR CLARIFICATION OF CONNECTION LOCATIONS AND CABLE TYPE. ALL INFORMATION OUTLETS ARE TYPICAL OF THE OUTLETS IN THE AREA SHOWN. SEE PLANS FOR MORE SPECIFIC ROUTING INFORMATION. SEE SPECIFICATIONS FOR ADDITIONAL REQUIREMENTS.

LEGEND:

- SINGLE MODE FIBER - - - - -
- RG6 COAXIAL CABLE - - - - -
- MM - MULTIMODE FIBER OPTIC CABLE (62.5µm)
- SM - SINGLEMODE FIBER OPTIC CABLE
- LO - LASER OPTIMIZED FIBER OPTIC CABLE (50µm)

KEYNOTES:

- 1 CATV SYSTEM COMBINER OUTPUT.
- 2 RACK MOUNT COPPER TO FIBER CONVERTER.
- 3 FIBER TO COPPER CONVERTER.
- 4 CATV TAP LOCATED IN PEDESTRIAN WALKWAY AT INTERSECTION OF CORRIDORS TO BUILDING 52 AND BUILDING 60. COORDINATE WITH OWNER TO VERIFY FEEDING THIS TAP WILL DISTRIBUTE TO WHOLE CAMPUS.
- 5 SINGLE MODE FIBER OPTIC CABLE



FULLY SPRINKLERED

<b>CONSULTANTS:</b>			<b>ARCHITECT/ENGINEERS:</b>			<b>Drawing Title</b>		<b>Project Title</b>		<b>Project Number</b>		<b>Office of</b>	
STRUCTURAL ENGINEER: KPMV CONSULTING ENGINEERS 1630 DES PERES ROAD, SUITE 100 ST. LOUIS, MO 63141 PHONE: (314) 835-0534			THE SEAL (S) AND SIGNATURE(S) APPLY ONLY TO THE DOCUMENT TO WHICH THEY ARE AFFIXED, AND WE EXPRESSLY DISCLAIM ANY RESPONSIBILITY FOR ALL OTHER PLANS, SPECIFICATIONS, ESTIMATES, REPORTS, OR OTHER DOCUMENTS OR INSTRUMENTS RELATING TO OR INTENDED TO BE USED FOR ANY PART OF PARTS OF THE PROJECT. © COPYRIGHT 2012 CHRISTNER INC.			<b>TECHNOLOGY RISER DIAGRAMS</b>		<b>TENANT BUILDING</b>		<b>657-313D</b>		<b>Construction and Facilities Management</b>	
MECHANICAL/ELECTRICAL/PLUMBING: KPMV ENGINEERING CONSULTANTS #15 SUNNEN DRIVE, SUITE 104 ST. LOUIS, MO 63143 PHONE: (314) 645-1132			ARCHITECTS   DESIGNERS   PLANNERS   LANDSCAPE ARCHITECTS 168 N. MERAMEC AVENUE   ST. LOUIS, MISSOURI 63105 TEL 314 725 2827   FAX 314 725 2828   CHRISTNERINC.COM			<b>Approved: Project Director</b>		<b>Location</b>		<b>Building Number</b>		<b>56</b>	
#1 April 10, 2013 Amendment 5						<i>Todd Sanders</i>		<b>Date</b>		<b>Checked</b>		<b>Drawn</b>	
#2 April 4, 2013 Amendment 4								<b>29 OCTOBER 2012</b>		<b>DARHAR</b>		<b>KEEVE</b>	
<b>No. Date Revisions</b>										<b>TN401</b>		<b>Dwg. 129 of 153</b>	
												<b>Department of Veterans Affairs</b>	