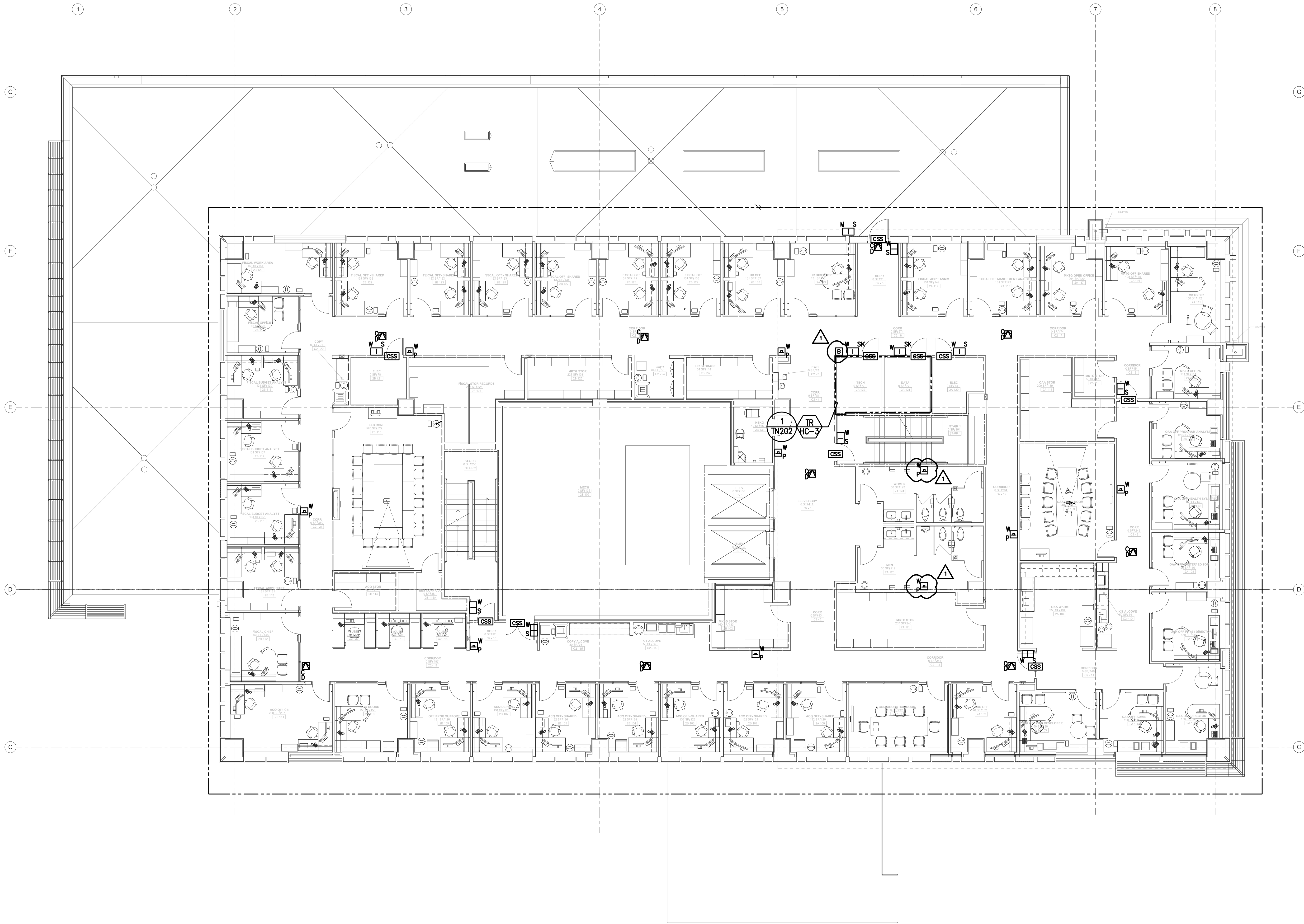


GENERAL SHEET NOTES

1. REFER TO 2/TN400 FOR ACCESS CONTROL RISER DIAGRAM.
2. REFER TO 3/TN400 FOR DOOR ROUGH-IN DETAIL.
3. REFER TO TN500 FOR ACCESS CONTROL DOOR SCHEDULE.
4. REFER TO 4/TN300 FOR TECHNOLOGY ROUGH-IN MOUNTING DETAIL.
5. REFER TO 5/TN300 FOR FIRE RATED CABLE PATHWAY DETAIL.



1 LEVEL 2 FLOOR PLAN - SECURITY - TECHNOLOGY
SCALE: 1/8" = 1'-0"

CONSULTANTS:

STRUCTURAL ENGINEER:
KPPF CONSULTING ENGINEERS
1630 DES PERES ROAD, SUITE 100
ST. LOUIS, MO 63131
PHONE: (314) 635-0524

CODE CONSULTANT/FIRE PROTECTION:
CODE CONSULTANTS, INC.
2043 WOODLAND PARKWAY, SUITE 200
ST. LOUIS, MO 63146
PHONE: (314) 991-2633

CIVIL ENGINEER:
STOCK & ASSOCIATES CONSULTING ENGINEERS, INC.
257 CHESTERFIELD BUSINESS PARKWAY
CHESTERFIELD, MO 63005
PHONE: (314) 645-1132

AUTOMATIC TRANSPORT:
LERCH BATES INC.
8088 S. LINCOLN STREET, SUITE 207
LITTLETON, CO 80122
PHONE: (720) 283-8182

ESTIMATING:
KIWAVE BUILDING GROUP, INC.
1204 WASHINGTON AVENUE, SUITE 200
ST. LOUIS, MO 63103
PHONE: (314) 962-5344

HAZARDOUS MATERIALS:
ALTEC ENVIRONMENTAL CONSULTING, LLC
P.O. BOX 17867
SHREVEPORT, LA 71138-0867
PHONE: (318) 687-3771

IRRIGATION CONSULTANTS:
IRM
9902 BANYON TREE
ST. LOUIS, MO 63126
PHONE: (318) 843-1481

CERTIFICATE OF AUTHORITY:



ARCHITECT/ENGINEERS:

CHRISTNER

ARCHITECTS | DESIGNERS | PLANNERS | LANDSCAPE ARCHITECTS
168 N. MERAMEC AVENUE | ST. LOUIS, MISSOURI 63105
TEL 314 725 2927 | FAX 314 725 2928 | CHRISTNERINC.COM

THE SEAL (S) AND SIGNATURE(S) APPLY ONLY TO THE DOCUMENT TO WHICH THEY ARE AFFIXED, AND WE EXPRESSLY DISCLAIM ANY RESPONSIBILITY FOR ALL OTHER PLANS, SPECIFICATIONS, ESTIMATES, REPORTS, OR OTHER DOCUMENTS OR INSTRUMENTS RELATING TO OR INTENDED TO BE USED FOR ANY PART OF PARTS OF THE PROJECT
© COPYRIGHT 2012 CHRISTNER INC.

Drawing Title

LEVEL 2 FLOOR PLAN - SECURITY - TECHNOLOGY

Approved: Project Director

John Sanders

Project Title

TENANT BUILDING

Location

JEFFERSON BARRACKS DIVISION

Date

29 OCTOBER 2012

Checked

DARHAR

Drawn

KEIEVE

Project Number

657-313D

Building Number

56

Drawing Number

TY102

Dwg. 116 of 153

Office of
Construction
and Facilities
Management

