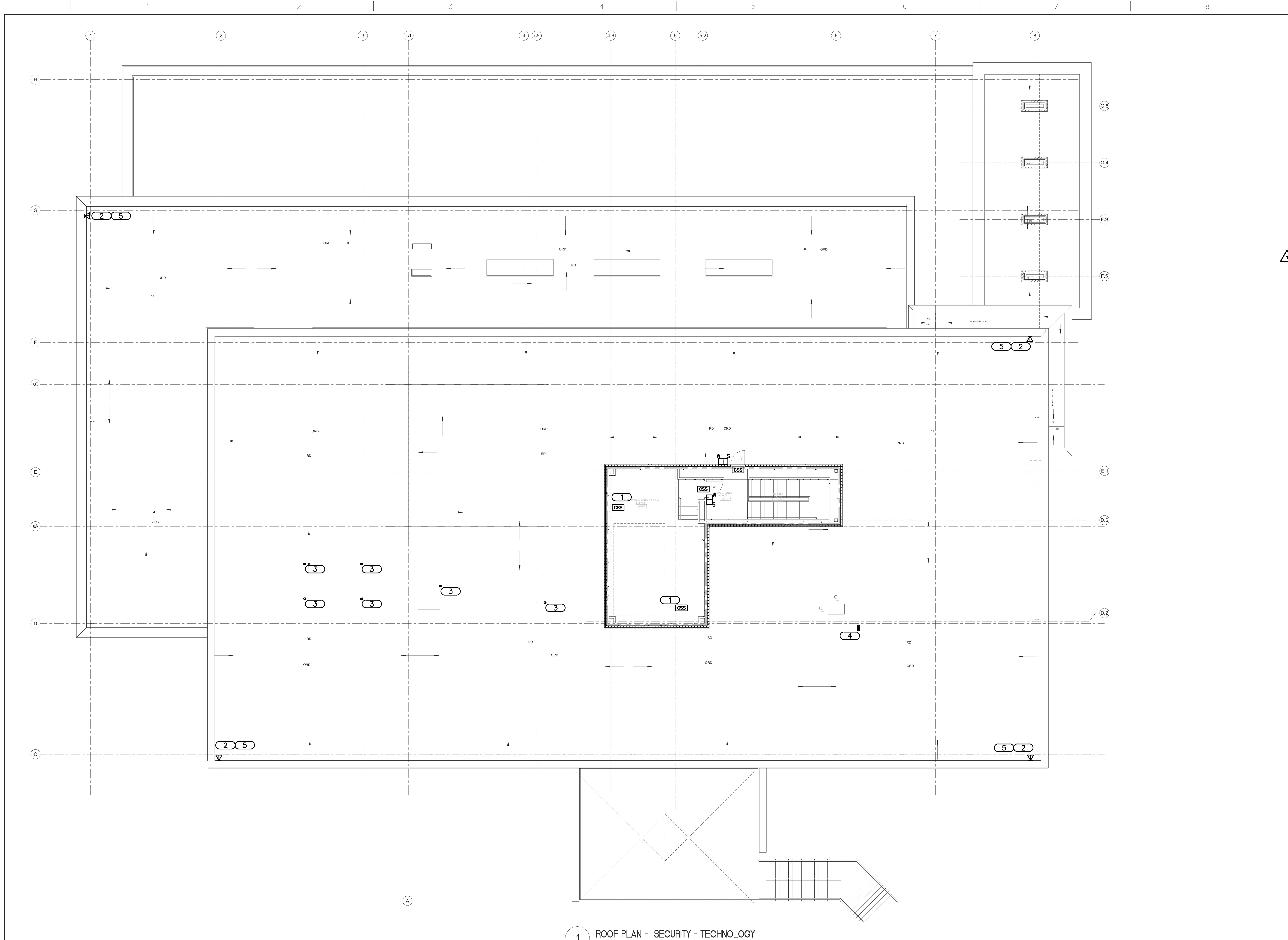


three eighths inch = one foot  
one eighth inch = one foot  
one quarter inch = one foot  
one half inch = one foot  
three quarters inch = one foot  
one inch = one foot  
one and one half inches = one foot  
two inches = one foot  
three inches = one foot  
four inches = one foot  
six inches = one foot  
eight inches = one foot  
ten inches = one foot  
twelve inches = one foot  
fourteen inches = one foot  
sixteen inches = one foot  
eighteen inches = one foot  
twenty inches = one foot  
twenty two inches = one foot  
twenty four inches = one foot  
twenty six inches = one foot  
twenty eight inches = one foot  
thirty inches = one foot  
thirty two inches = one foot  
thirty four inches = one foot  
thirty six inches = one foot  
thirty eight inches = one foot  
forty inches = one foot  
forty two inches = one foot  
forty four inches = one foot  
forty six inches = one foot  
forty eight inches = one foot  
fifty inches = one foot  
fifty two inches = one foot  
fifty four inches = one foot  
fifty six inches = one foot  
fifty eight inches = one foot  
sixty inches = one foot  
sixty two inches = one foot  
sixty four inches = one foot  
sixty six inches = one foot  
sixty eight inches = one foot  
seventy inches = one foot  
seventy two inches = one foot  
seventy four inches = one foot  
seventy six inches = one foot  
seventy eight inches = one foot  
eighty inches = one foot  
eighty two inches = one foot  
eighty four inches = one foot  
eighty six inches = one foot  
eighty eight inches = one foot  
ninety inches = one foot  
ninety two inches = one foot  
ninety four inches = one foot  
ninety six inches = one foot  
ninety eight inches = one foot  
one hundred inches = one foot



- KEYNOTES**
- CARD READER CONTROL IN ELEVATOR. CONTRACTOR SHALL COORDINATE LOCATION OF CONNECTIONS WITH ELEVATOR CONTRACTOR.
  - LOCATION FOR FUTURE EXTERIOR CAMERA. PROVIDE WEATHER PROOF FACEPLATE WITH COVER. ROUTE CONDUIT TO INSIDE OF BUILDING. REFER TO EP303 FOR ROOF PENETRATION DETAIL.
  - ONE (1) 2" CONDUIT SLEEVE. THROUGH ROOF TO THIRD FLOOR ACCESSIBLE CEILING SPACE. CONDUIT IS PROVIDED FOR OWNER'S SATELLITE DISH INSTALLATION COMPANY. REFER TO TD103 FOR THIRD FLOOR LOCATIONS. REFER TO 6/TN401 FOR ROOF PENETRATION DETAIL.
  - THREE (3) 2" CONDUIT SLEEVES. THROUGH ROOF TO THIRD FLOOR ACCESSIBLE CEILING SPACE. CONDUIT IS PROVIDED FOR OWNER'S SATELLITE DISH INSTALLATION COMPANY. REFER TO TD103 FOR THIRD FLOOR LOCATIONS. REFER TO 6/TN401 FOR ROOF PENETRATION DETAIL.
  - LOCATION FOR FUTURE EXTERIOR CAMERA. PROVIDE NEMA 3R ENCLOSURE. REFER TO 5/TN401 FOR ENCLOSURE DETAIL. ROUTE CONDUIT TO INSIDE OF BUILDING AND CATEGORY 6 CABLING TO NEAREST ER/TR.

1 ROOF PLAN - SECURITY - TECHNOLOGY  
SCALE: 1/8" = 1'-0"

<b>CONSULTANTS:</b>			<b>CERTIFICATE OF AUTHORITY:</b>		<b>ARCHITECT/ENGINEERS:</b>		<b>Drawing Title</b>		<b>Project Title</b>		<b>Project Number</b>		<b>Office of Construction and Facilities Management</b> Department of Veterans Affairs					
STRUCTURAL ENGINEER: KPF CONSULTING ENGINEERS 1630 DES PERES ROAD, SUITE 100 ST. LOUIS, MO 63104 PHONE: (314) 635-0524			CODE CONSULTANTS, INC. 2043 WOODLAND PARKWAY, SUITE 300 ST. LOUIS, MO 63146 PHONE: (314) 991-2633		AUTOMATIC TRANSPORT: LERCH BATES INC. 8088 S. LINCOLN STREET, SUITE 207 LITTLETON, CO 80122 PHONE: (318) 687-3771		HAZARDOUS MATERIALS: ALTEC ENVIRONMENTAL CONSULTING, LLC P.O. BOX 17867 SHREVEPORT, LA 71138-0867 PHONE: (318) 687-3771		ROOF PLAN - SECURITY - TECHNOLOGY		TENANT BUILDING				657-313D			
MECHANICAL/ELECTRICAL/PLUMBING: KJWW ENGINEERING CONSULTANTS #15 SUMNER DRIVE, SUITE 104 ST. LOUIS, MO 63143 PHONE: (314) 645-1132			CIVIL ENGINEER: STOCK & ASSOCIATES CONSULTING ENGINEERS, INC. 257 CHESTERFIELD BUSINESS PARKWAY CHESTERFIELD, MO 63005 PHONE: (630) 530-9100		ESTIMATING: KIWAME BUILDING GROUP, INC. 1204 WASHINGTON AVENUE, SUITE 200 ST. LOUIS, MO 63103 PHONE: (314) 862-5344		IRRIGATION CONSULTANTS: IRM 9502 BANYON TREE ST. LOUIS, MO 63126 PHONE: (318) 843-1481		Approved: Project Director <i>John Sanders</i>		JEFFERSON BARRACKS DIVISION				Building Number 56			
#1 April 4, 2013 Revisions			Amendment 4		JAMES W. CHRISTNER PE-200600099 PROFESSIONAL ENGINEER STATE OF MISSOURI 20 JANUARY 2012		ARCHITECTS   DESIGNERS   PLANNERS   LANDSCAPE ARCHITECTS 168 N. MERAMEC AVENUE   ST. LOUIS, MISSOURI 63105 TEL 314 725 2927   FAX 314 725 2928   CHRISTNERINC.COM		Date 29 OCTOBER 2012		Checked DARHAR		Drawn KEIEVE		Drawing Number TY104		Dwg. 118 of 153	