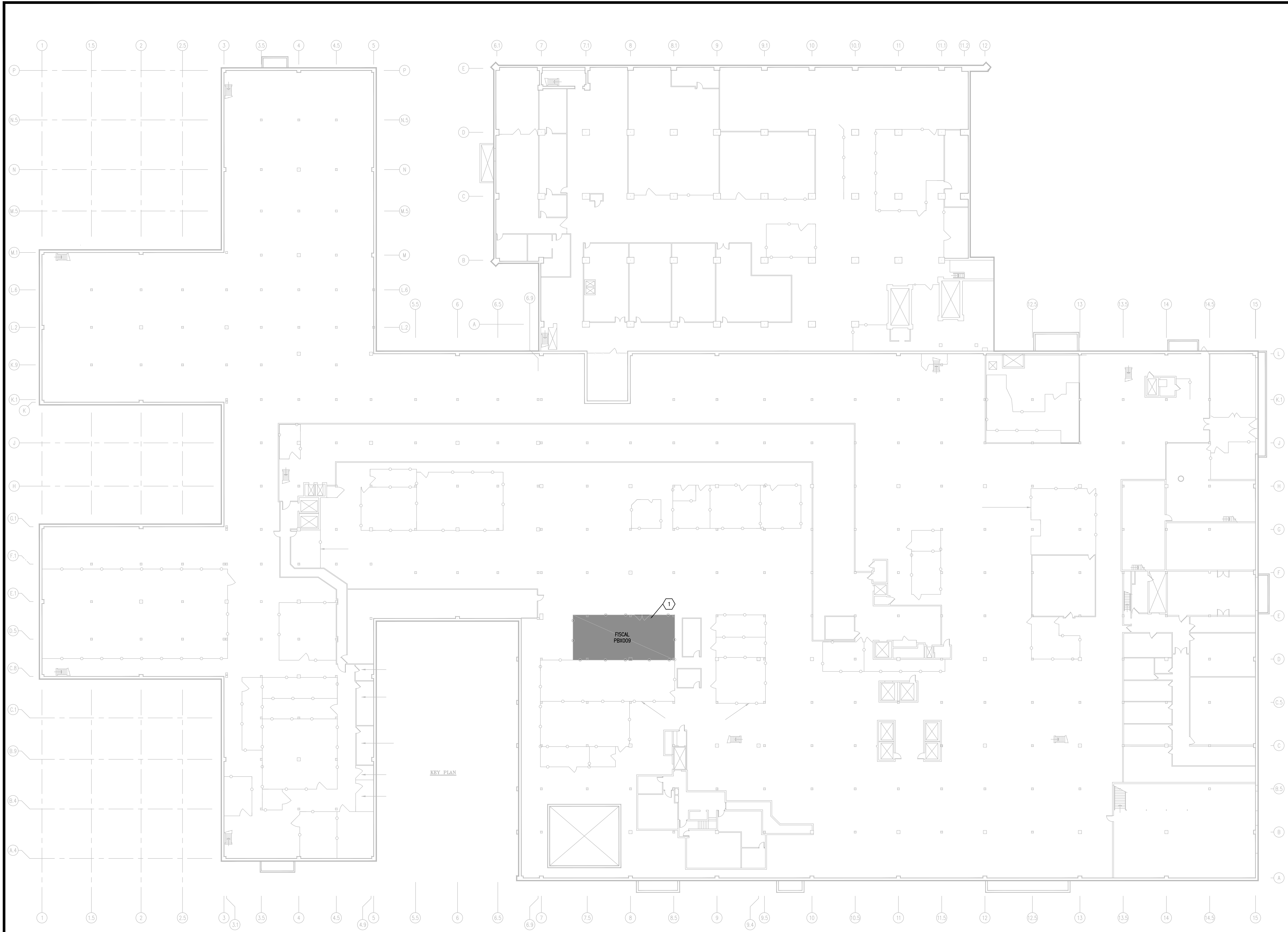


three-eighths inch = one foot
one-eighth inch = one foot
one-quarter inch = one foot
three-quarters inch = one foot
one-half inch = one foot
one inch = one foot
one and one-half inches = one foot
two inches = one foot
three inches = one foot
four inches = one foot
six inches = one foot
eight inches = one foot
ten inches = one foot
twelve inches = one foot
fourteen inches = one foot
sixteen inches = one foot
eighteen inches = one foot
twenty inches = one foot
twenty-four inches = one foot



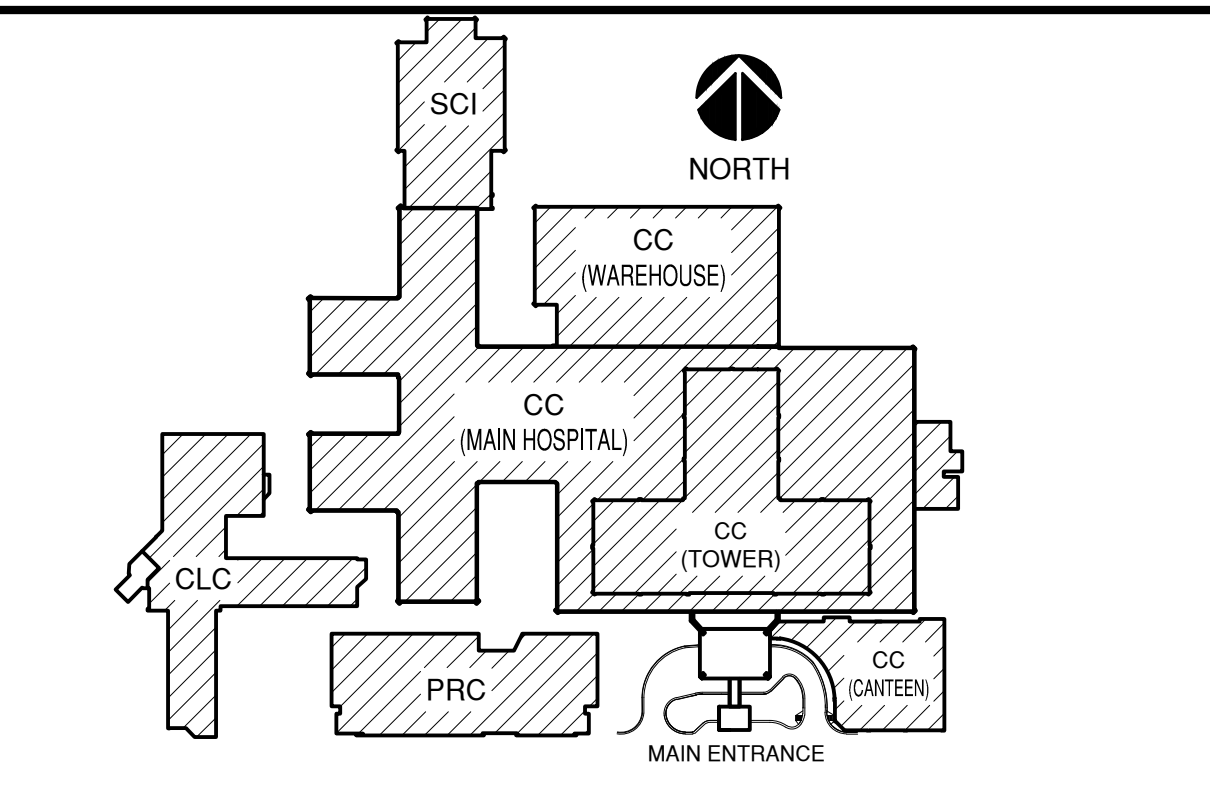
F1 PIPE LEVEL PLAN, BLDG. CC
SCALE: 1" = 20'-0"
NORTH

- ### GENERAL NOTES
- A. FIELD VERIFY ALL DIMENSIONS.
- B. COORDINATE ALL WORK AND PROJECT SCHEDULING WITH VA SAFETY, INFECTION CONTROL AND POLICE DEPARTMENTS.
- C. PROJECT CONSISTS OF FACILITY WIDE PNEUMATIC TUBE SYSTEM (PTS) INSTALLATION TO THE VA SAN ANTONIO AUDIE L. MURPHY VA HOSPITAL. AFFECTED BUILDINGS ARE AS FOLLOWS:
BUILDING CC, HOSPITAL & ADMINISTRATION, SEVEN FLOORS
BUILDING CLC, COMMUNITY LIVING CENTER, TWO FLOORS
BUILDING PRC, POLYTRAUMA REHABILITATION CENTER, THREE FLOORS
- D. PROJECT SCOPE OF WORK (SOW) INCLUDES INSTALLATION OF A NEW PNEUMATIC TUBE SYSTEM THROUGHOUT THE HOSPITAL FACILITY. SCOPE SHALL INCLUDE THE FOLLOWING:
1. INSTALLATION OF NEW GALVANIZED STEEL PNEUMATIC TUBING SUSPENDED FROM EXISTING STRUCTURE WITHIN INTERSTITIAL SPACES.
2. INSTALLATION OF PNEUMATIC BLOWER UNITS.
3. INSTALLATION OF PNEUMATIC TRANSFER UNITS.
4. INSTALLATION OF PNEUMATIC TERMINAL UNITS.
5. INSTALLATION OF PNEUMATIC ACCESSORIES SUCH AS CARRIER STORAGE UNITS AND ARRIVAL INDICATORS.
6. ELECTRICAL UPGRADES TO ACCOMMODATE NEW EQUIPMENT.
7. MATERIAL ABATEMENT AT SLAB PENETRATIONS AND P.T.S. TERMINAL LOCATIONS.
8. SELECT DEMOLITION.
9. NEW FRAMING AND PARTITIONS FOR TERMINAL UNITS.
10. NEW ARCHITECTURAL FINISHES.
- E. THE PIPE LEVEL EQUIPMENT CONFIGURATION LAYOUT IS FOR REFERENCE PURPOSES ONLY. SPECIFIC PLACEMENT OF PNEUMATIC PIPING, TRANSFER UNITS, BLOWERS, VALVES HANGERS, ASSOCIATED EQUIPMENT AND PARTITION REQUIREMENTS IS DEPENDANT UPON SPECIFIC MANUFACTURER'S REQUIREMENTS. COORDINATE EQUIPMENT PLACEMENT AND PNEUMATIC PIPING LAYOUT WITH SELECTED PNEUMATIC EQUIPMENT MANUFACTURER.

- ### KEY NOTES
1. PNEUMATIC TUBE SYSTEM BLOWER, MOTORS AND ASSOCIATED EQUIPMENT LOCATION:
SPACE PS-PBX009. REMOVAL OF VA STORAGE ITEMS BY OWNER.

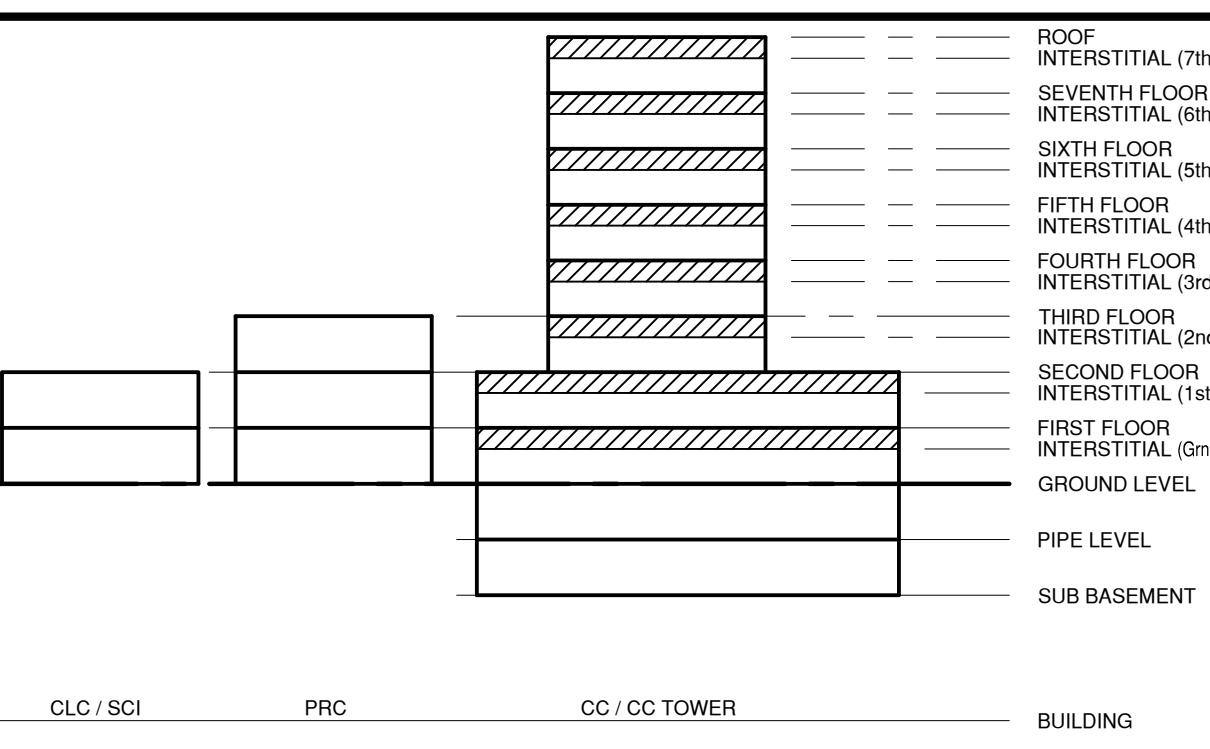
BUILDING KEY PLAN

SCALE: NONE



BUILDING FLOOR ELEVATION DIAGRAM

SCALE: NONE



BUILDING LEGEND

BUILDING CC:	MAIN HOSPITAL
BUILDING PRC:	POLYTRAUMA REHABILITATION CENTER
BUILDING CLC:	COMMUNITY LIVING CENTER
BUILDING SCI:	SPINAL CORD INJURY

100% CONSTRUCTION ISSUE

Computer Filename:	Revisions	Date	FE ENGINEERING Inc.	MPI Architects	Seal	Seal	Drawing Title BUILDING CC PIPE LEVEL FLOOR PLAN	Project Title AUDIE L. MURPHY VA HOSPITAL PNEUMATIC TUBE SYSTEM UPGRADE	Date 4/24/15	Project No. 671-13-104	Building Number CC	Checked DJD	Drawn AR/DC	Drawing No. A100	Dwg. of	South Texas Veterans Health Care System	STVHCS San Antonio, Texas
2201 N Collins, Suite 205 Arlington, Texas 76011-2050 (817) 461-5337 Fax: (817) 461-1935 E: 118 MECHANICAL *ELECTRICAL* PLUMBING	FEI Project No.: 13069		MPI Project No.: 8130707		Seal		Approved: Area Project Manager	Location 7400 Merton Minter San Antonio, TX 78229									

VA FORM 08-6231A, JAN 1990