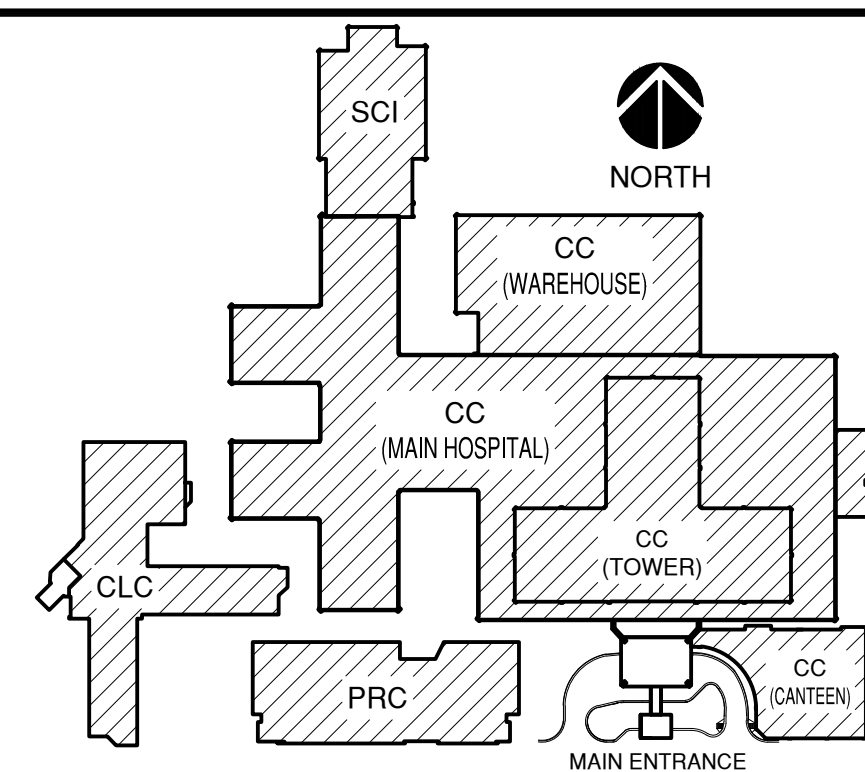


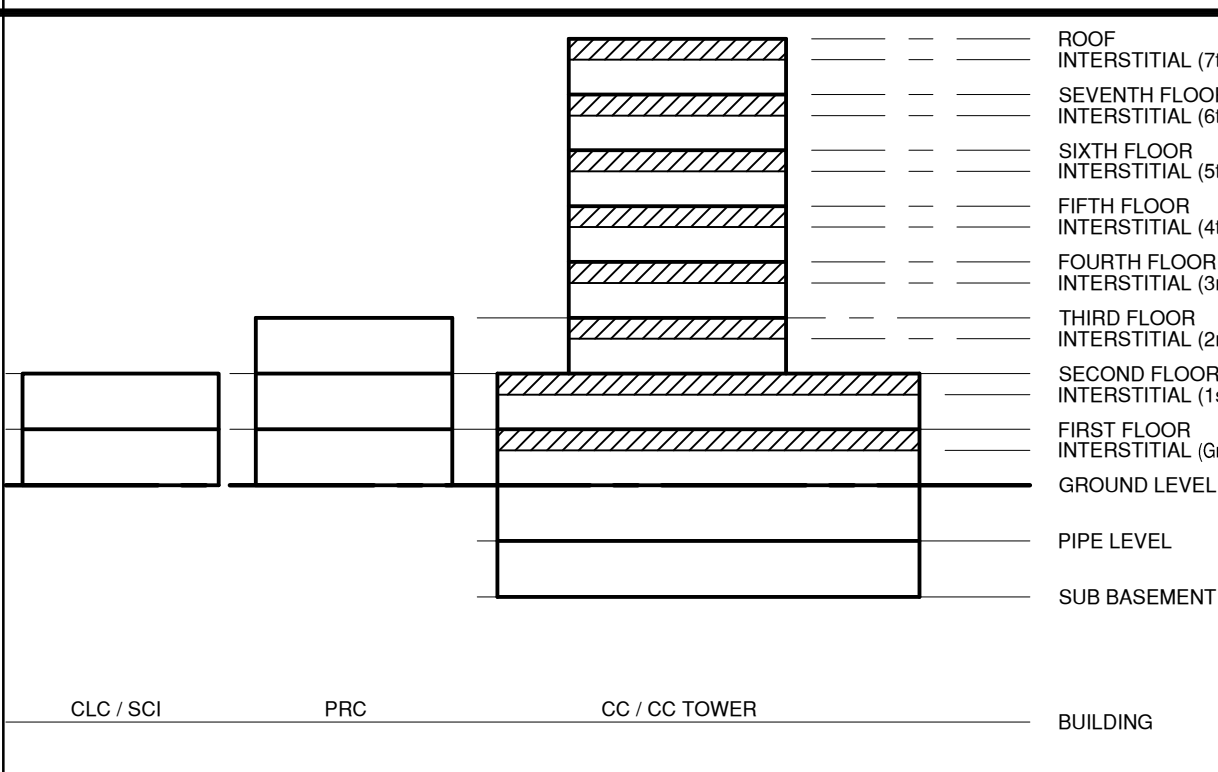


SCALE: NONE



BUILDING FLOOR ELEVATION DIAGRAM

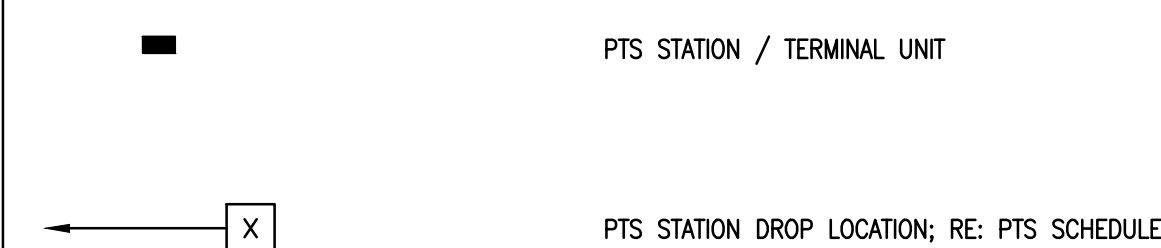
SCALE
NONE



GENERAL NOTES

- A. FIELD VERIFY ALL DIMENSIONS.
- B. COORDINATE ALL WORK AND PROJECT SCHEDULING WITH VA SAFETY, INFIRMARY CONTROL AND POLICE DEPARTMENTS.
- C. PROJECT CONSISTS OF FURNISH AND INSTALL PNEUMATIC TUBING (PTS) INSTALLATION TO THE VA SAN ANTONIO AUDIENCE L. MURPHY VA HOSPITAL. AFFECTED BUILDINGS ARE AS FOLLOWS:
 - BUILDING CC, HOSPITAL & ADMINISTRATION, SEVEN FLOORS
 - BUILDING CLC, COMMUNITY LIVING CENTER, TWO FLOORS
 - BUILDING PRC, PSYCHOTRAUMA REHABILITATION CENTER, THREE FLOORS
- D. PROJECT SCOPE OF WORK (SOW) INCLUDES INSTALLATION OF A NEW PNEUMATIC TUBING SYSTEM THROUGHOUT THE HOSPITAL FACILITY. SCOPE SHALL INCLUDE THE FOLLOWING:
 - 1. INSTALLATION OF NEW GALVANIZED STEEL PNEUMATIC TUBING SUSPENDED FROM EXISTING STRUCTURE WITH INTERSTITIAL SPACES.
 - 2. INSTALLATION OF PNEUMATIC BLOWER UNITS.
 - 3. INSTALLATION OF PNEUMATIC TRANSFER UNITS.
 - 4. INSTALLATION OF PNEUMATIC TERMINAL UNITS.
 - 5. INSTALLATION OF PNEUMATIC ACCESSORIES SUCH AS CARRIER STORAGE UNITS AND ARRIVAL INDICATORS.
 - 6. ELECTRICAL UPDATES TO ACCOMMODATE NEW EQUIPMENT.
 - 7. ASBESTOS ABATEMENT AT SLAB PENETRATIONS AND P.T.S. TERMINAL LOCATIONS.
 - 8. SELECT DEMOLITION.
 - 9. NEW FRAMING AND PARTITIONS FOR TERMINAL UNITS.
 - 10. NEW ARCHITECTURAL FINISHES.

SYMBOL LEGEND



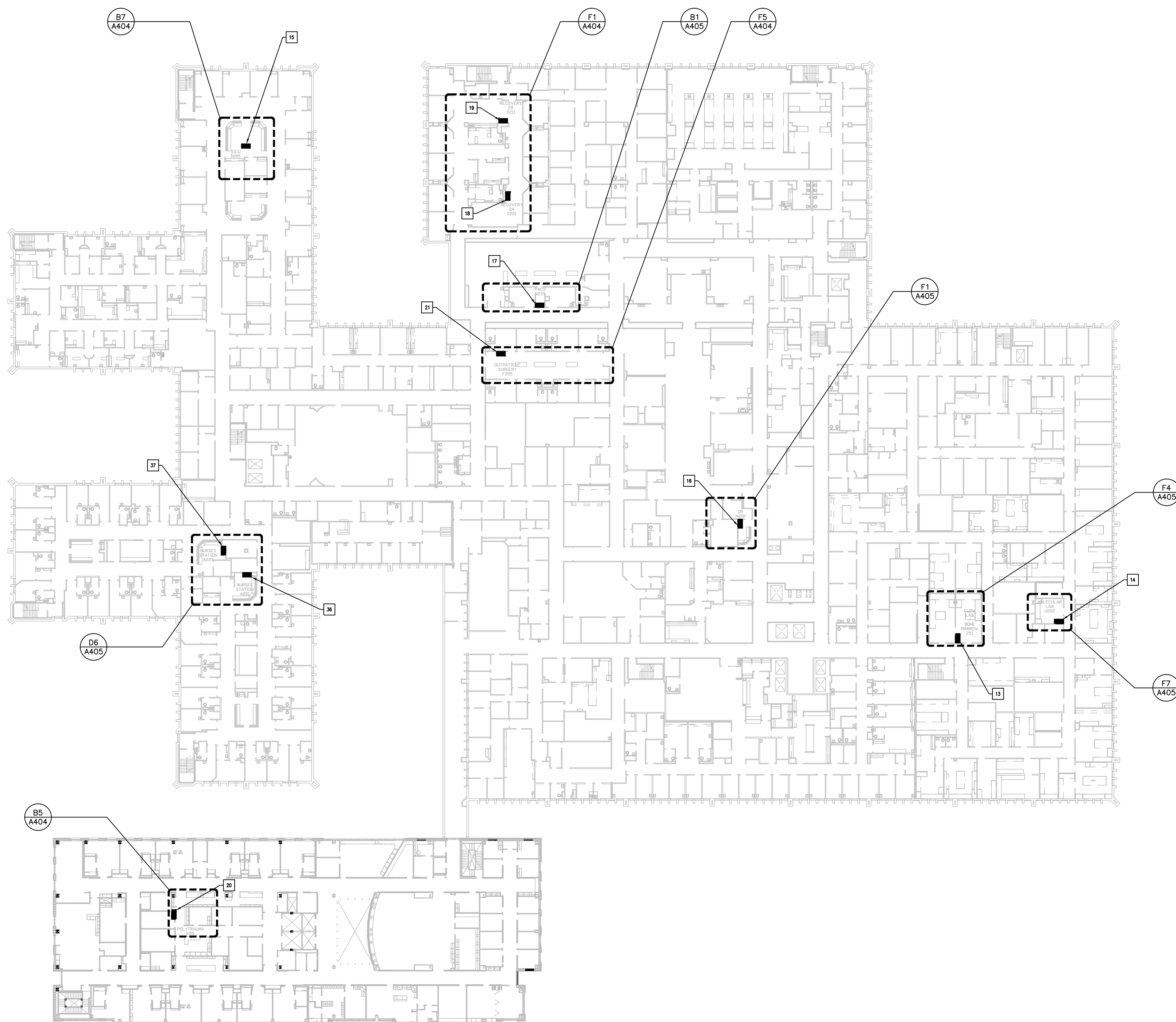
PNEUMATIC TUBE SYSTEM (PTS) STATION SCHEDULE

No.	DEPARTMENT	BLDG.	FLOOR	ROOM
1	SPD (SUPPLY, PROCESSING & DISTRIBUTION)	CC	GROUND	FB32A
2	SCI (SPINAL CORD INJURY) PHARMACY	SCI	GROUND	C015
3	SCI (SPINAL CORD INJURY) NURSING STATION	SCI	GROUND	D035.
4	CLC (COMMUNITY LIVING CENTER) NURSING STATION	CLC	GROUND (LEVEL 1)	1A144
5	LAB 2 – (BLOOD LAB)	CC	FIRST	T107.2
6	PHARMACY – INPATIENT – ULTRA STATIONS	CC	FIRST	P140
7	PHARMACY – OUTPATIENT	CC	FIRST	U105
8	PHLEBOTOMY (BLOOD DRAW)	CC	FIRST	131
9	BLOOD BANK	CC	FIRST	T106
10	ED (EMERGENCY DEPARTMENT) NURSING STATION	CC	FIRST	V101
11	ED (EMERGENCY DEPARTMENT) FAST TRACK	CC	FIRST	127
12	CLC (COMMUNITY LIVING CENTER) NURSING STATION	CLC	FIRST (LEVEL 2)	2A143
13	FLOW LAB (BONE MARROW LAB)	CC	SECOND	251
14	MOLECULAR LAB RPI	CC	SECOND	U202
15	SICU (SURGICAL INTENSIVE CARE UNIT)	CC	SECOND	D205
16	OR SURGERY / SAT SUG PHARM / ANESTHESIA	CC	SECOND	N000
17	PACU (POST ANESTHESIA CARE UNIT)	CC	SECOND	N239
18	RECOVERY 2A	CC	SECOND	Z201
19	RECOVERY 2B	CC	SECOND	Z211
20	POLYTRAUMA	PRG	SECOND	225
21	OUTPATIENT SURGERY	CC	SECOND	F205
22	CYTOGENETICS LAB	CC	THIRD	C315
23	MEDSURG – NURSING STATION A	CC	FOURTH	A433
24	MEDSURG – NURSING STATION B	CC	FOURTH	B406
25	HEMODIALYSIS	CC	FOURTH	A406
26	MEDSURG – NURSING STATION A	CC	FIFTH	A507
27	PCU (PROGRESSIVE CARE UNIT) MEDSURG – NURSING STATION B	CC	FIFTH	B515
28	MICU (MEDICAL INTENSIVE CARE UNIT) – NURSING STATION	CC	FIFTH	C508
29	CCU (CRITICAL CARE UNIT) – NURSING STATION 6A	CC	SIXTH	A606
30	IMC (INTERNAL MEDICAL CLINIC) NURSING STATION – 6B	CC	SIXTH	B609
31	CATH (LAB 2) – 6C	CC	SIXTH	C606
32	BONE MARROW TRANSPLANT UNIT	CC	SEVENTH	B701
33	CHEMOTHERAPY	CC	SEVENTH	D707
34	BARRIER CANCER CENTER – NURSING STATION 7A	CC	SEVENTH	7A
35	ED (EMERGENCY DEPARTMENT) – FUTURE EXPANSION	CC	FIRST	X115
36	2 SURGERY INPATIENT UNIT – NURSING STATION	CC	SECOND	A201
37	2 SURGERY INPATIENT UNIT – NURSING STATION	CC	SECOND	A227

BUILDING LEGEND

BUILDING CC:	MAIN HOSPITAL
BUILDING PRC:	POLYTRAUMA REHABILITATION CENTER
BUILDING CLC:	COMMUNITY LIVING CENTER
BUILDING SCI:	SPINAL CORD INJURY

100% CONSTRUCTION ISSUE



F1 SECOND FLOOR PLAN, BLDGS. CC, PRC

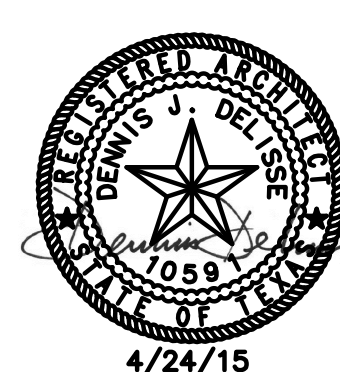
SCALE: 1" = 30'-0"

[illegible]

FEI Project No.: 13069



MPI Project No.: 8130707



Se

Se

Drawing Title
BUILDINGS CC & PRC
SECOND FLOOR PLAN

Approved: Area Project Manager

Project Title
AUDIE L. MURPHY VA HOSPITAL
PNEUMATIC TUBE SYSTEM
UPGRADE

Building Number CC, PRC	Checked DJD	Drawn AR/DC
Location 7400 Merton Minter San Antonio, TX 78229		

Date	4/24/15
Project No.	671-13-104
Drawing No.	A103
Dwg. of	



STVHCS
San Antonio, Texas