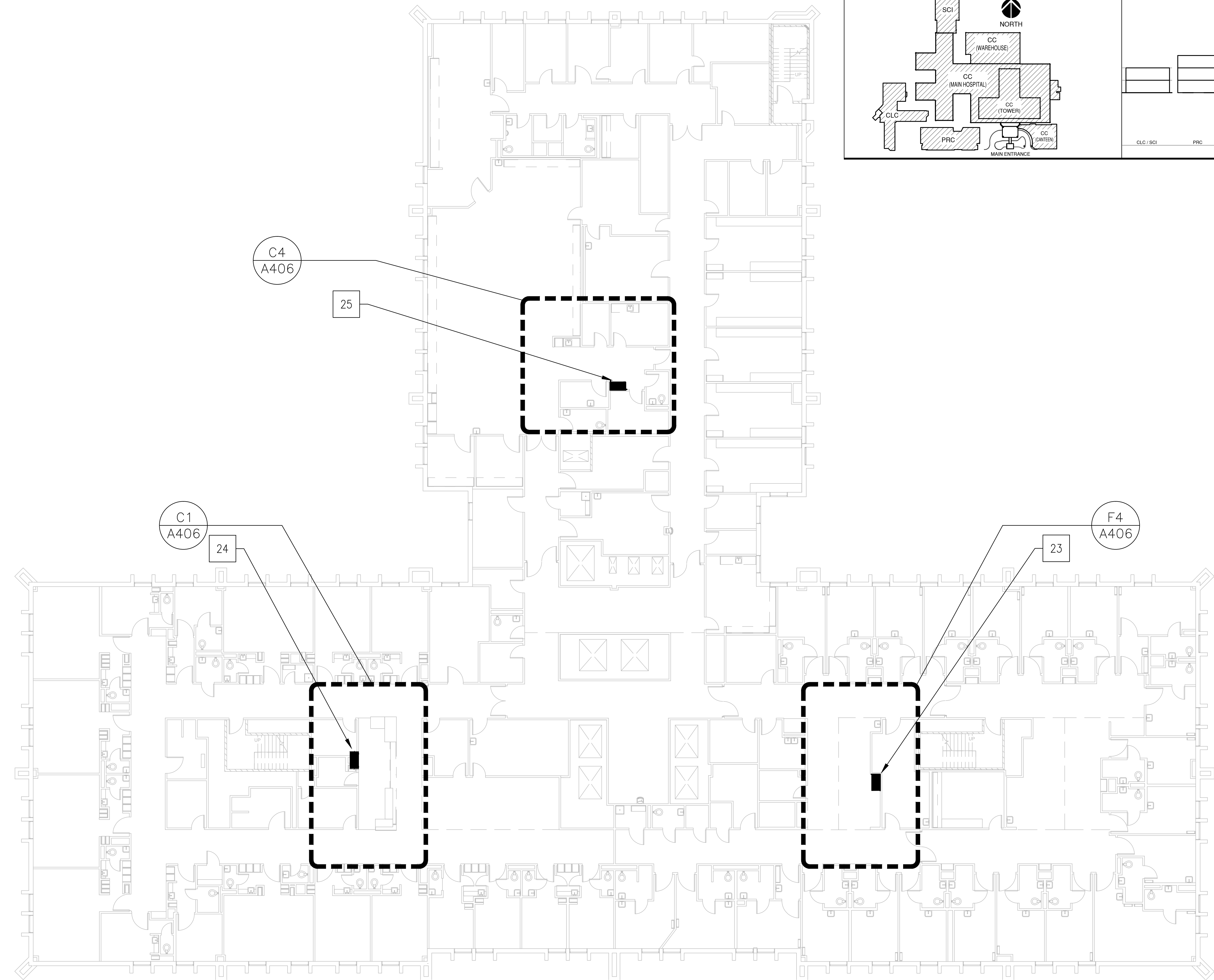
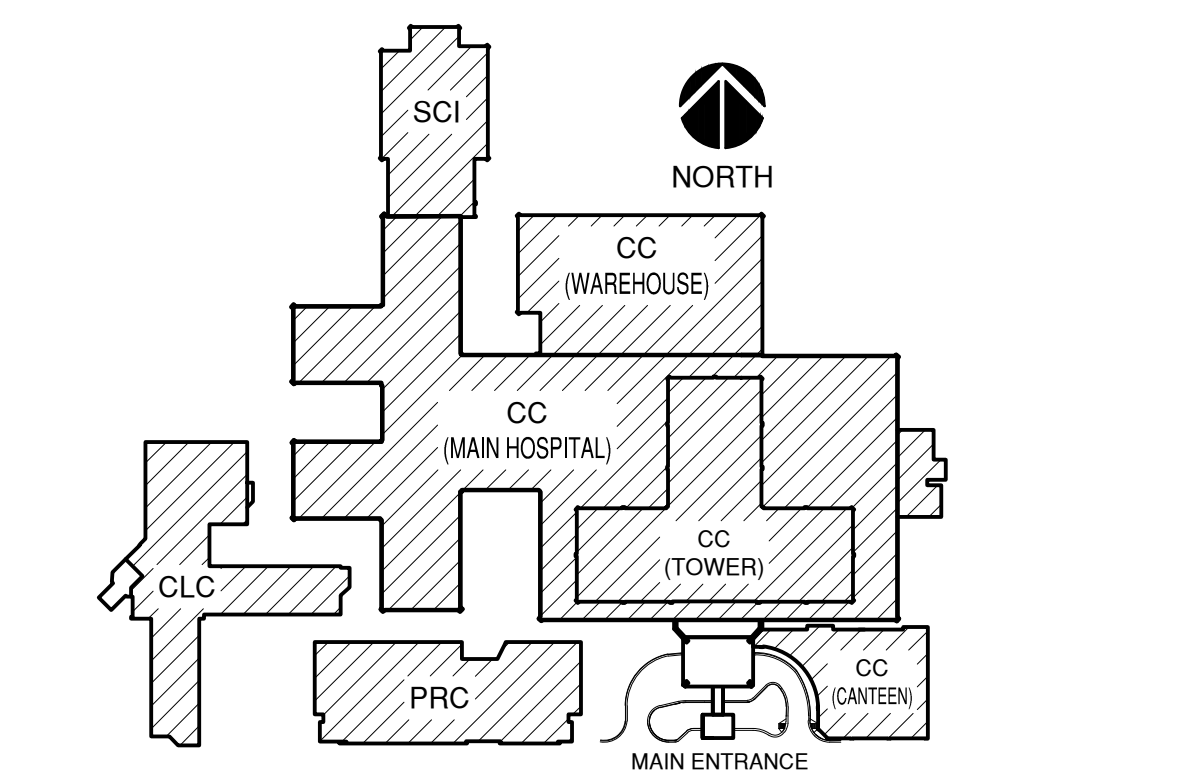


three-eighths inch = one foot
one-eighth inch = one foot
one-quarter inch = one foot
one-half inch = one foot
three-quarters inch = one foot
one inch = one foot
one and one-half inches = one foot
two inches = one foot
three inches = one foot
four inches = one foot
six inches = one foot
eight inches = one foot
ten inches = one foot
twelve inches = one foot
fourteen inches = one foot
sixteen inches = one foot
eighteen inches = one foot
twenty inches = one foot
twenty-four inches = one foot

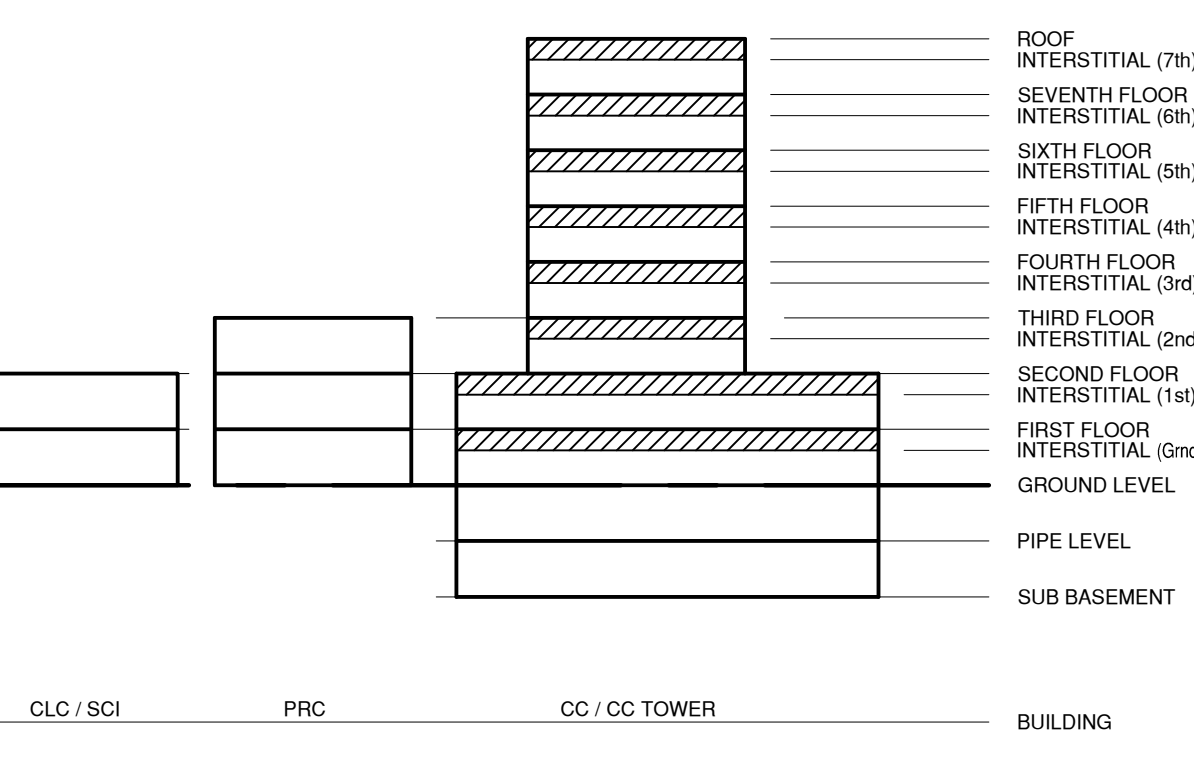


F1 FOURTH FLOOR PLAN, BLDG. CC
SCALE: 1" = 10'-0"
NORTH

BUILDING KEY PLAN



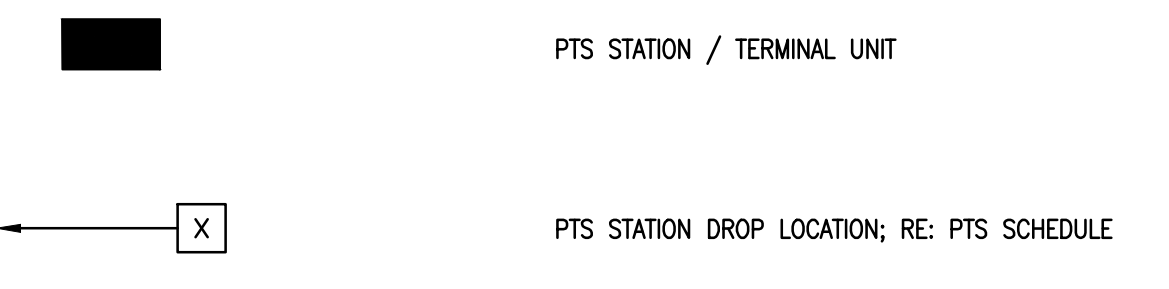
BUILDING FLOOR ELEVATION DIAGRAM



GENERAL NOTES

- FIELD VERIFY ALL DIMENSIONS.
- COORDINATE ALL WORK AND PROJECT SCHEDULING WITH VA SAFETY, INFECTION CONTROL AND POLICE DEPARTMENTS.
- PROJECT CONSISTS OF FACILITY WIDE PNEUMATIC TUBE SYSTEM (PTS) INSTALLATION TO THE VA SAN ANTONIO AUDIE L. MURPHY VA HOSPITAL. AFFECTED BUILDINGS ARE AS FOLLOWS:
BUILDING CC, HOSPITAL & ADMINISTRATION, SEVEN FLOORS
BUILDING CLC, COMMUNITY LIVING CENTER, TWO FLOORS
BUILDING PRC, POLYTRAUMA REHABILITATION CENTER, THREE FLOORS
- PROJECT SCOPE OF WORK (SOW) INCLUDES INSTALLATION OF A NEW PNEUMATIC TUBE SYSTEM THROUGHOUT THE HOSPITAL FACILITY. SCOPE SHALL INCLUDE THE FOLLOWING:
 - INSTALLATION OF NEW GALVANIZED STEEL PNEUMATIC TUBING SUSPENDED FROM EXISTING STRUCTURE WITHIN INTERSTITIAL SPACES.
 - INSTALLATION OF PNEUMATIC BLOWER UNITS.
 - INSTALLATION OF PNEUMATIC TRANSFER UNITS.
 - INSTALLATION OF PNEUMATIC TERMINAL UNITS.
 - INSTALLATION OF PNEUMATIC ACCESSORIES SUCH AS CARRIER STORAGE UNITS AND ARRIVAL INDICATORS.
 - ELECTRICAL UPGRADES TO ACCOMMODATE NEW EQUIPMENT.
 - ASBESTOS ABATEMENT AT SLAB PENETRATION LOCATIONS AND P.T.S. TERMINAL LOCATIONS.
 - SELECT DEMOLITION.
 - NEW FRAMING AND PARTITIONS FOR TERMINAL UNITS.
 - NEW ARCHITECTURAL FINISHES.

SYMBOL LEGEND



PNEUMATIC TUBE SYSTEM (PTS) STATION SCHEDULE

NO.	DEPARTMENT	BLDG.	FLOOR	ROOM
1	SPD (SUPPLY, PROCESSING & DISTRIBUTION)	CC	GROUND	FB32A
2	SCI (SPINAL CORD INJURY) PHARMACY	SCI	GROUND	C015
3	SCI (SPINAL CORD INJURY) NURSING STATION	SCI	GROUND	D035.1
4	CLC (COMMUNITY LIVING CENTER) NURSING STATION	CLC	GROUND (LEVEL 1)	1A144
5	LAB 2 - (BLOOD LAB)	CC	FIRST	T107.2
6	PHARMACY - INPATIENT - ULTRA STATIONS	CC	FIRST	P140
7	PHARMACY - OUTPATIENT	CC	FIRST	U105
8	PHLEBOTOMY (BLOOD DRAW)	CC	FIRST	131
9	BLOOD BANK	CC	FIRST	T106
10	ED (EMERGENCY DEPARTMENT) NURSING STATION	CC	FIRST	V101
11	ED (EMERGENCY DEPARTMENT) FAST TRACK	CC	FIRST	127
12	CLC (COMMUNITY LIVING CENTER) NURSING STATION	CLC	FIRST (LEVEL 2)	2A143
13	FLOW LAB (BONE MARROW LAB)	CC	SECOND	251
14	MOLECULAR LAB RPI	CC	SECOND	U202
15	SICU (SURGICAL INTENSIVE CARE UNIT)	CC	SECOND	D205
16	OR SURGERY / SAT SURG PHARM / ANESTHESIA	CC	SECOND	N200
17	PACU (POST ANESTHESIA CARE UNIT)	CC	SECOND	N239
18	RECOVERY 2A	CC	SECOND	Z201
19	RECOVERY 2B	CC	SECOND	Z211
20	POLYTRAUMA	PRC	SECOND	225
21	OUTPATIENT SURGERY	CC	SECOND	F205
22	CYTGENETICS LAB	CC	THIRD	C315
23	MEDSURG - NURSING STATION A	CC	FOURTH	A433
24	MEDSURG - NURSING STATION B	CC	FOURTH	B406
25	HEMODIALYSIS	CC	FOURTH	C406
26	MEDSURG - NURSING STATION A	CC	FIFTH	A507
27	PCU (PROGRESSIVE CARE UNIT) MEDSURG - NURSING STATION B	CC	FIFTH	B515
28	MCU (MEDICAL INTENSIVE CARE UNIT) - NURSING STATION	CC	FIFTH	C508
29	CCU (CRITICAL CARE UNIT) - NURSING STATION 6A	CC	SIXTH	A606
30	IMC (INTERNAL MEDICINE CLINIC) NURSING STATION - 6B	CC	SIXTH	B609
31	CATH LAB 2 - 6C	CC	SIXTH	C606
32	BONE MARROW TRANSPLANT UNIT	CC	SEVENTH	B701
33	CHEMOTHERAPY	CC	SEVENTH	D707
34	BARRIER CANCER CENTER - NURSING STATION 7A	CC	SEVENTH	7A
35	ED (EMERGENCY DEPARTMENT - FUTURE EXPANSION)	CC	FIRST	X115
36	2 SURGERY INPATIENT UNIT - NURSING STATION	CC	SECOND	A201
37	2 SURGERY INPATIENT UNIT - NURSING STATION	CC	SECOND	A227

BUILDING LEGEND

- BUILDING CC: MAIN HOSPITAL
BUILDING PRC: POLYTRAUMA REHABILITATION CENTER
BUILDING CLC: COMMUNITY LIVING CENTER
BUILDING SCI: SPINAL CORD INJURY

100% CONSTRUCTION ISSUE

Computer Filename: _____

Revisions: _____ Date: _____

2201 N Collins, Suite 295
Arlington, Texas 76011-2058
(817) 461-5357 Fax: (817) 461-1935
MECHANICAL • ELECTRICAL • PLUMBING

Architecture • Planning • Interior Design
4949 Addison Circle • Addison, Texas 75001

Drawing Title
**BUILDING CC
FOURTH FLOOR PLAN**

Approved: Area Project Manager

Project Title
**AUDIE L. MURPHY VA HOSPITAL
PNEUMATIC TUBE SYSTEM
UPGRADE**

Building Number: CC
Checked: DJD
Drawn: AR/DC
Location: 7400 Merton Minter
San Antonio, TX 78229

Date: 4/24/15
Project No.: 671-13-104
Drawing No.: A105
Dwg. of: _____

STVHCS
San Antonio, Texas