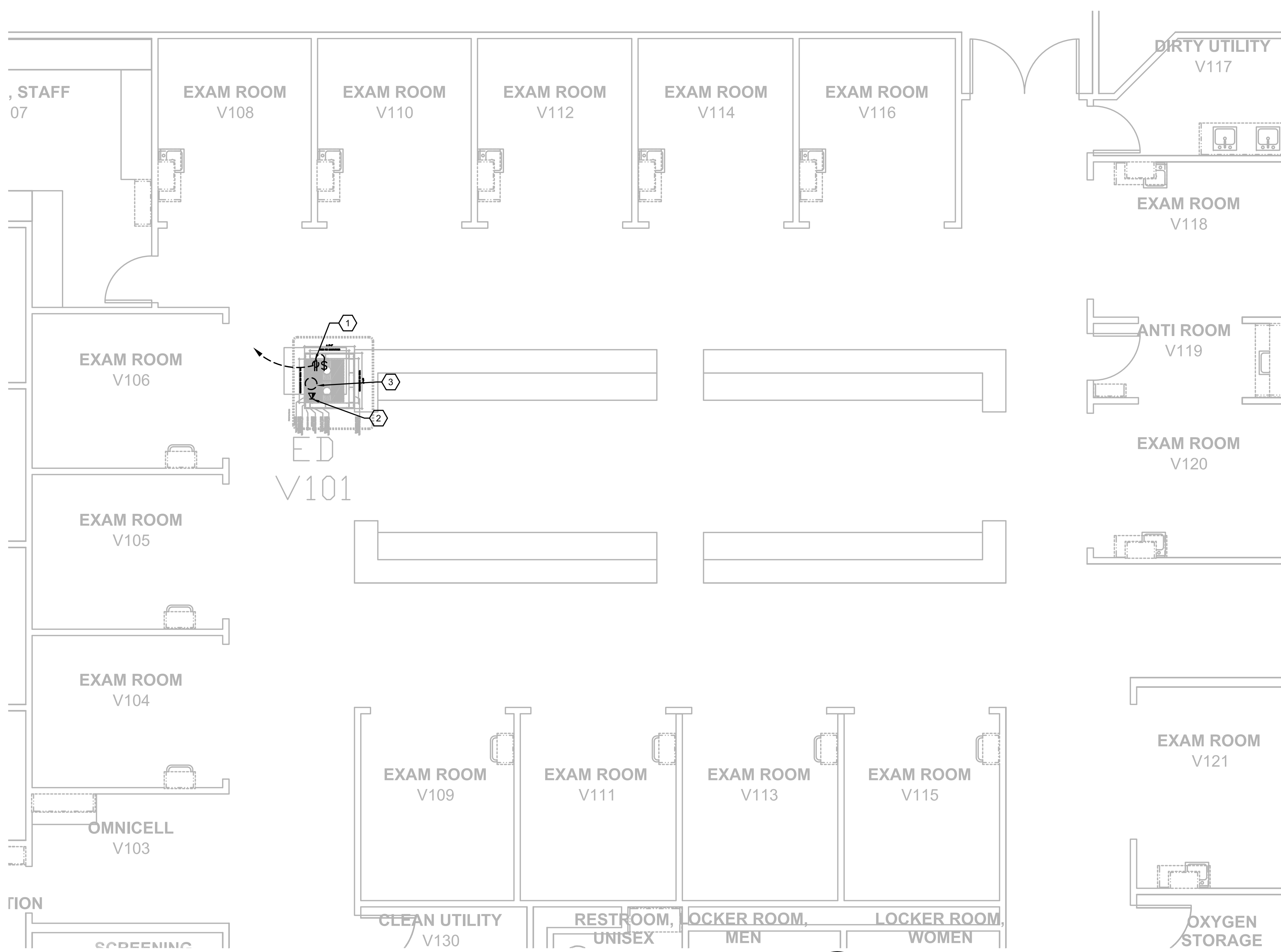


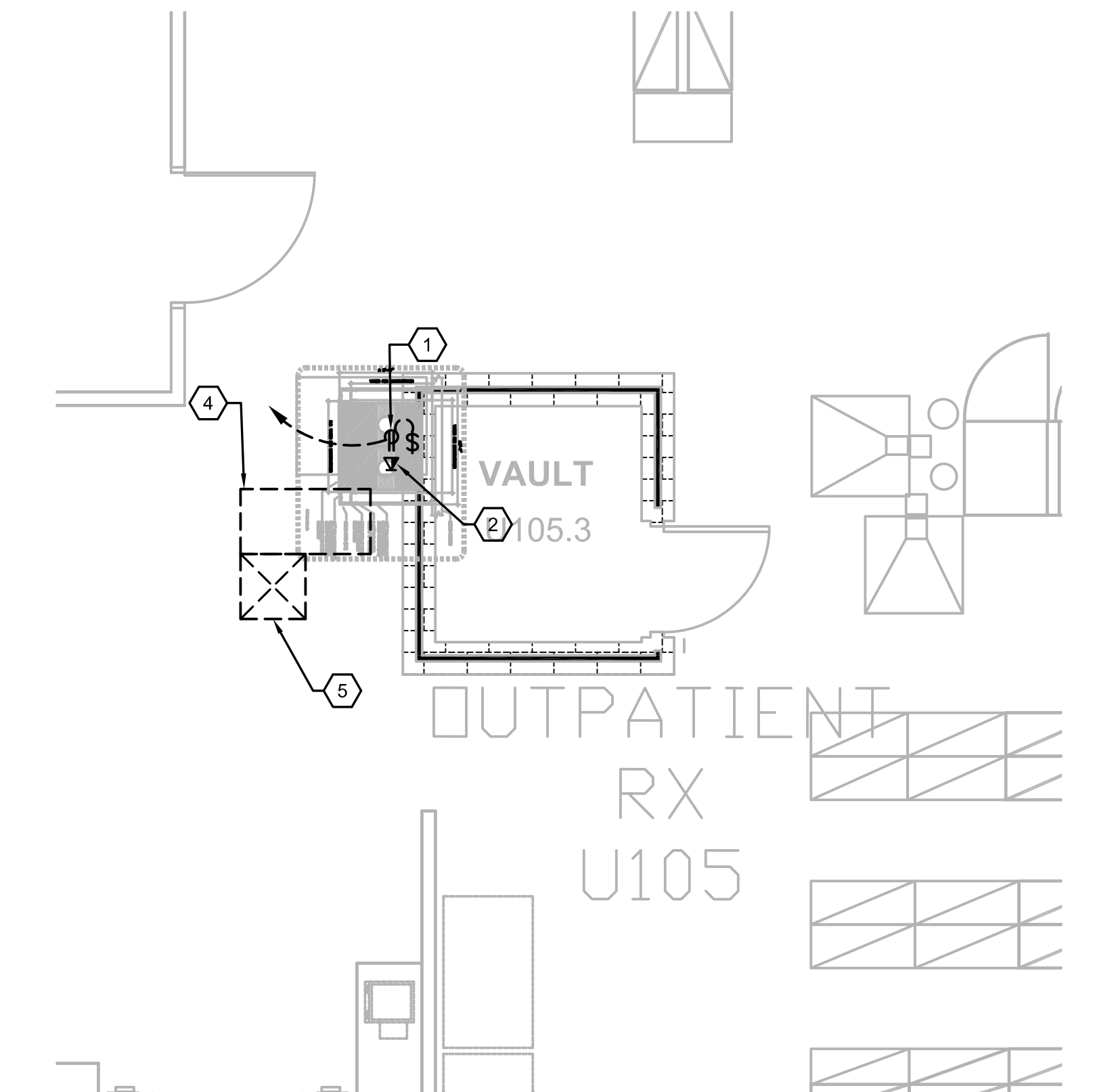
0 6 1 0 2 0 2 0 4 0 4 0 8 0 4 0 12 0 4 8 12 24

three inches = one foot
one and one-half inches = one foot
one inch = one foot
three-quarters inch = one foot
one-half inch = one foot
three-eighths inch = one foot
one-quarter inch = one foot
one-eighth inch = one foot

Computer Filename:

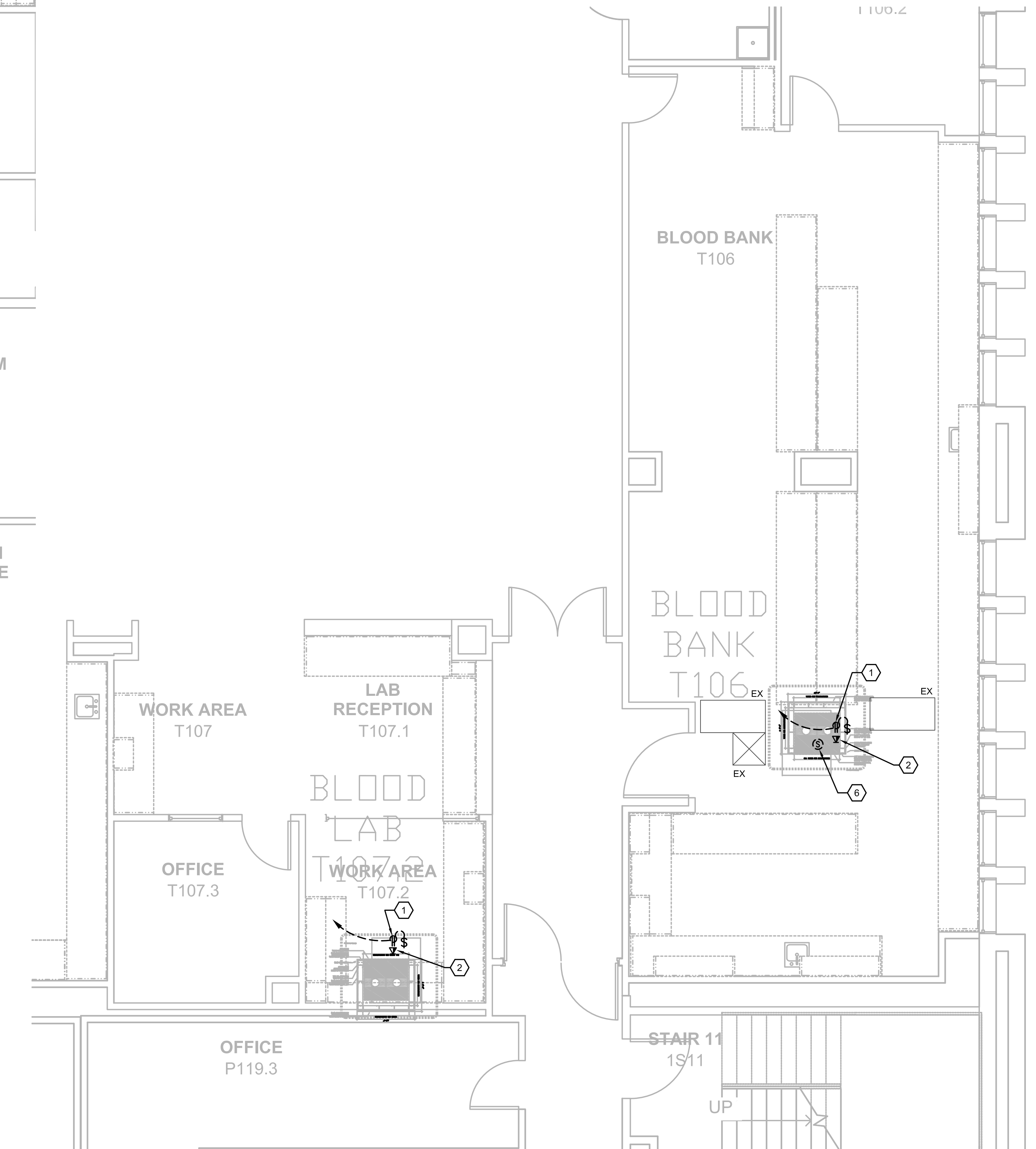


B1 FIRST FLOOR PLAN, BLDG. CC (PTS #10); ED NURSING STATION V101
SCALE: 1/4" = 1'-0"



F1 FIRST FLOOR PLAN, BLDG. CC (PTS #7); OUTPATIENT PHARMACY U105
SCALE: 1/4" = 1'-0"

- | GENERAL NOTES: | NOTES BY SYMBOL: '⬡' |
|--|--|
| 1. REFER TO MEP000 FOR ADDITIONAL NOTES. | 1. PROVIDE 120V, 20A, DUPLEX RECEPTACLE WITH TOGGLE SWITCH BEHIND CABINET OF THE PNEUMATIC TUBE SYSTEM STATION. |
| 2. THE PNEUMATIC TUBE SYSTEM INFRASTRUCTURE DESIGN HEREIN BASED ON SWISSLOG HEALTHCARE SOLUTIONS EQUIPMENT. THE VA RESERVES THE RIGHT FOR APPROVAL OF ALTERNATE PNEUMATIC TUBE SYSTEMS MANUFACTURER. | 2. PROVIDE TELEPHONE/DATA OUTLET WITH ETHERNET, CAT5 OUTLET CAPABILITY BEHIND PNEUMATIC TUBE SYSTEM STATION. |
| 3. CONTRACTOR SHALL RE-ROUTE ANY DUCTWORK, MECHANICAL OR PLUMBING PIPING, DAMPERS OR TERMINAL BOXES LOCATED IN THE CEILING PLENUM AS REQUIRED TO ACCOMMODATE NEW PNEUMATIC OR ASSOCIATED EQUIPMENT. | 3. REMOVE EXISTING DOWNLIGHT, ASSOCIATED BRANCH CIRCUIT BACK TO ITS SOURCE. |
| 4. REFER E109 THRU E111 FOR PANELBOARD LOCATIONS AND ADDITIONAL INFORMATION. | 4. REMOVE AND RETAIN EXISTING LIGHT FIXTURE, ASSOCIATED BRANCH CIRCUIT TO BE RELOCATED 90° AS REQUIRED TO ALLOW FOR INSTALLATION OF PNEUMATIC TUBE CABINET. REINSTALL AS CLOSE AS POSSIBLE TO THE ORIGINAL LOCATION. |
| | 5. REMOVE AND RETAIN EXISTING HVAC DEVICE, ASSOCIATED DUCTWORK AS REQUIRED TO ALLOW INSTALLATION OF PNEUMATIC TUBE CABINET. REINSTALL AS CLOSE AS POSSIBLE TO THE ORIGINAL LOCATION. |
| | 6. REMOVE AND RETAIN EXISTING SMOKE DETECTOR, ASSOCIATED WIRING TO ALLOW FOR INSTALLATION OF PNEUMATIC TUBE CABINET. REINSTALL AS CLOSE AS POSSIBLE TO THE ORIGINAL LOCATION. |



F7 FIRST FLOOR PLAN, BLDG. CC; (PTS #5) LAB2-BLOOD BANK T107 & (PTS #9) BLOOD BANK T106
SCALE: 1/4" = 1'-0"

100% CONSTRUCTION ISSUE

<div>Revisions</div> <table><tr><td> </td><td> </td></tr><tr><td> </td><td> </td></tr><tr><td> </td><td> </td></tr><tr><td> </td><td> </td></tr></table>									<div>FEI Project No.: 13069</div>	<div>MPI Architects</div> <div>Architecture ■ Planning ■ Interior Design</div> <div>4949 Addison Circle ■ Addison, Texas 75001</div> <div>MPI Project No.: 8130707</div>	<div>Seal</div>	<div>Seal</div>	<div>BUILDINGS CC & CLC FIRST FLOOR PLAN PTS STATION LOCATIONS - MECHANICAL/ELECTRICAL</div> <div>Approved: Area Project Manager</div>	<div>Project Title</div> <div>AUDIE L. MURPHY VA HOSPITAL PNEUMATIC TUBING SYSTEM</div>		<div>Date</div> <div>04/24/15</div>
<div>Building Number</div> <div>CC, CLC</div>		<div>Checked</div> <div>SLT</div>	<div>Drawn</div> <div>AOP</div>	<div>Project No.</div> <div>671-13-104</div>												
<div>Location</div> <div>7400 Merton Minter San Antonio, TX 78229</div>		<div>Dwg. of</div>		<div>Drawing No.</div> <div>ME403</div>												
<div>South Texas Veterans Health Care System</div>																

VA FORM 08-6231A, JAN 1990

STVHCS
San Antonio, Texas