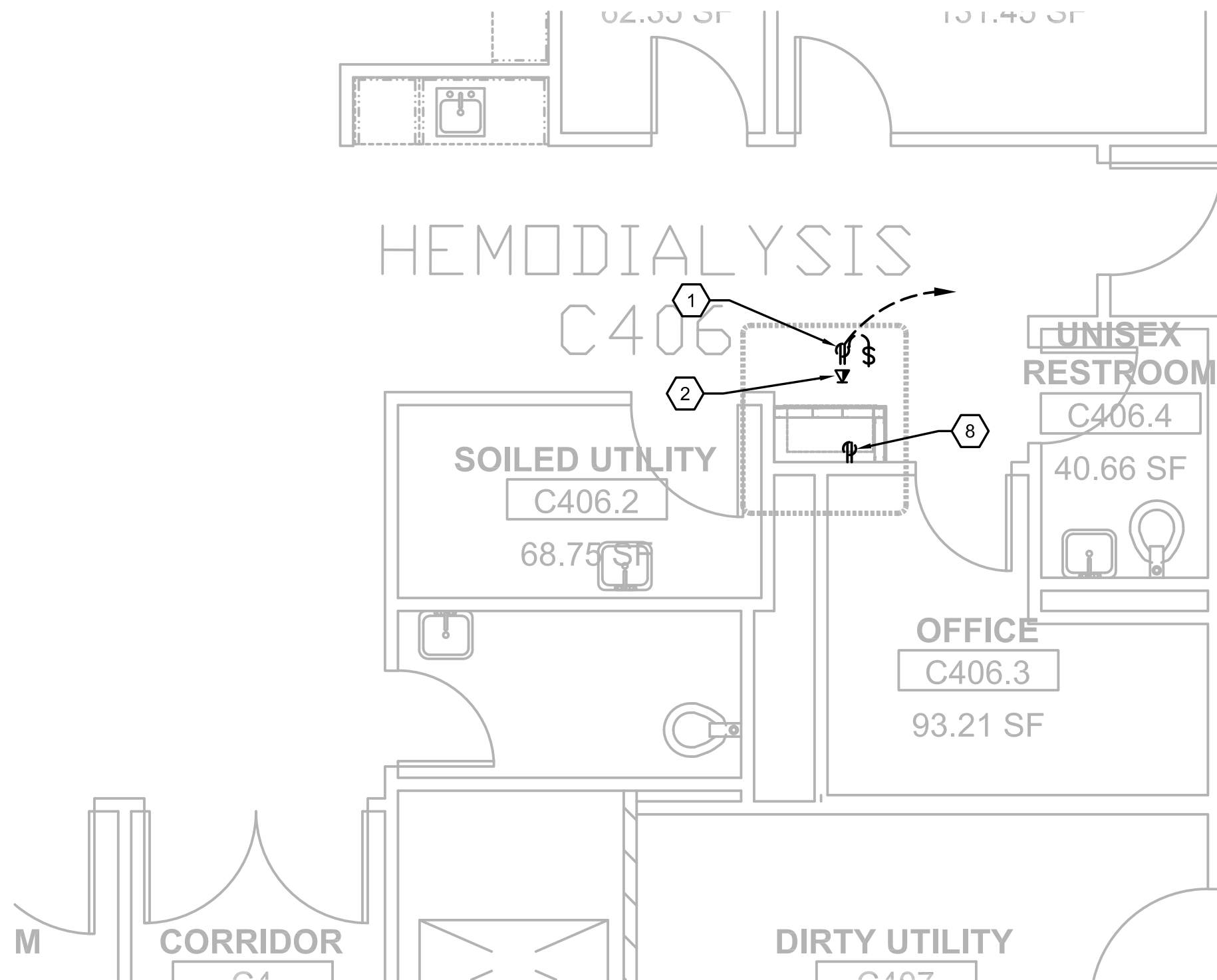
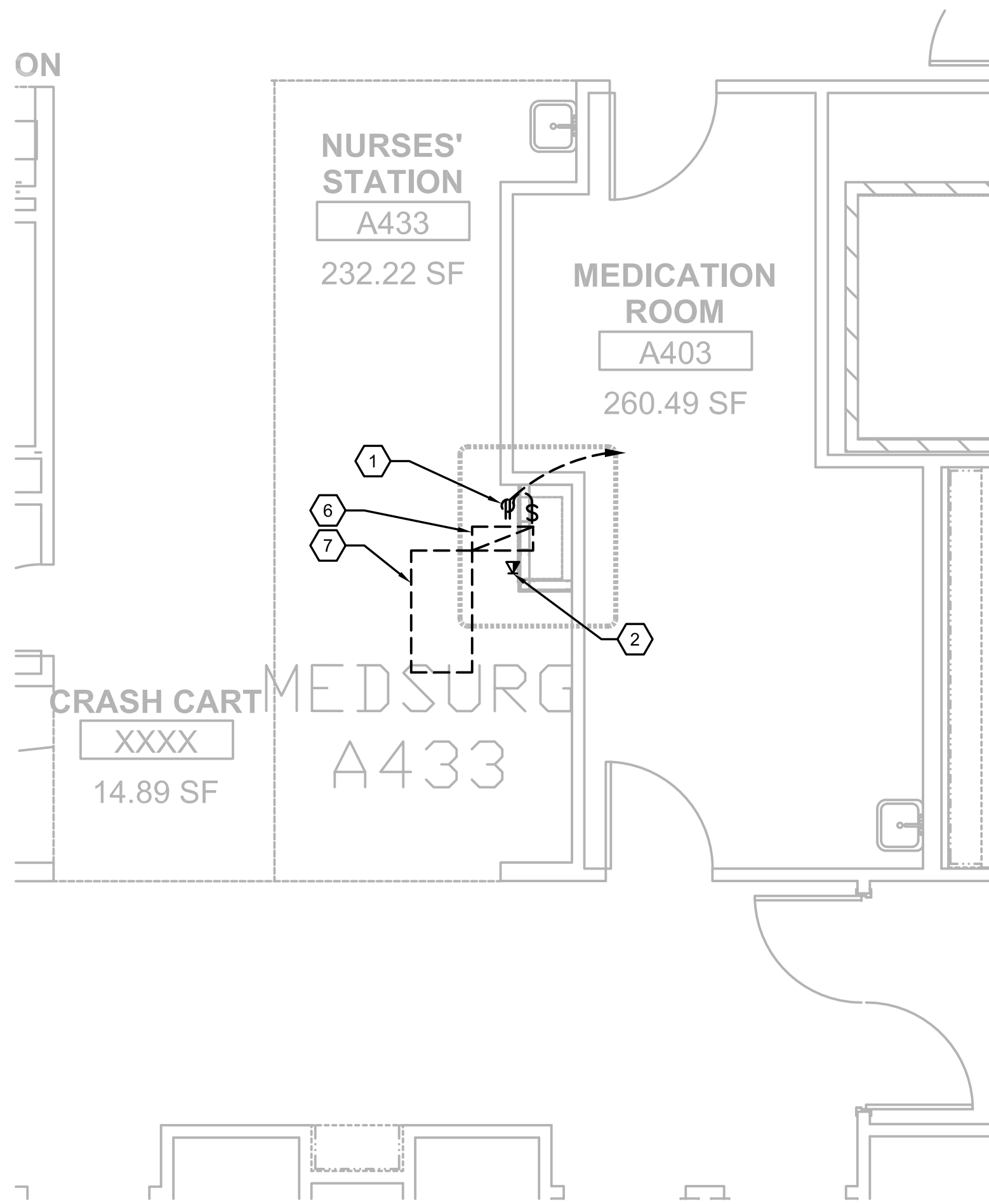


C1 FOURTH FLOOR PLAN, BLDG. CC; (PTS #24) MEDSURG STATION B406  
SCALE: 1/4" = 1'-0"



C4 FOURTH FLOOR PLAN, BLDG. CC; (PTS #25) HEMODIALYSIS C406  
SCALE: 1/4" = 1'-0"



F4 FOURTH FLOOR PLAN, BLDG. CC; (PTS #23) MEDSURG NURSE STATION A433  
SCALE: 1/4" = 1'-0"



#### GENERAL NOTES:

1. REFER TO MEP000 FOR ADDITIONAL NOTES.
2. THE PNEUMATIC TUBE SYSTEM INFRASTRUCTURE DESIGN HEREIN BASED ON SWISSLOG HEALTHCARE SOLUTIONS EQUIPMENT. THE VA RESERVES THE RIGHT FOR APPROVAL OF ALTERNATE PNEUMATIC TUBE SYSTEMS MANUFACTURER.
3. CONTRACTOR SHALL RE-ROUTE ANY DUCTWORK, MECHANICAL OR PLUMBING PIPING, DAMPERS OR TERMINAL BOXES LOCATED IN THE CEILING PLENUM AS REQUIRED TO ACCOMMODATE NEW PNEUMATIC OR ASSOCIATED EQUIPMENT.
4. REFER E109 THRU E111 FOR PANELBOARD LOCATIONS AND ADDITIONAL INFORMATION.

#### NOTES BY SYMBOL: '⬡'

1. PROVIDE 120V, 20A, DUPLEX RECEPTACLE WITH TOGGLE SWITCH BEHIND CABINET OF THE PNEUMATIC TUBE SYSTEM STATION.
2. PROVIDE TELEPHONE/DATA OUTLET WITH ETHERNET, CAT5 OUTLET CAPABILITY BEHIND PNEUMATIC TUBE SYSTEM STATION.
3. REMOVE AND RETAIN EXISTING RECEPTACLE, OUTLET BOX, ASSOCIATED BRANCH CIRCUIT TO BE RELOCATED AS REQUIRED FOR INSTALLATION OF PNEUMATIC TUBE CABINET. REINSTALL AS CLOSE AS POSSIBLE TO THE ORIGINAL LOCATION.
4. REMOVE AND RETAIN EXISTING NURSE CALL DEVICE, OUTLET BOX, ASSOCIATED CONTROL WIRING TO BE RELOCATED AS REQUIRED FOR INSTALLATION OF PNEUMATIC TUBE CABINET. REINSTALL AS CLOSE AS POSSIBLE TO THE ORIGINAL LOCATION.
5. REMOVE AND RETAIN EXISTING FIRE ALARM PULL STATION, ASSOCIATED WIRING TO BE RELOCATED FOR INSTALLATION OF PNEUMATIC TUBE CABINET. REINSTALL AS CLOSE AS POSSIBLE TO THE ORIGINAL LOCATION, AND MOUNT TO COMPLY WITH ADA REQUIREMENTS.
6. REMOVE AND RETAIN EXISTING HVAC DEVICE, ASSOCIATED DUCTWORK AS REQUIRED TO ALLOW FOR INSTALLATION OF PNEUMATIC TUBE CABINET. REINSTALL AS CLOSE AS POSSIBLE TO THE ORIGINAL LOCATION.
7. REMOVE AND RETAIN EXISTING LIGHT FIXTURE, ASSOCIATED BRANCH CIRCUIT TO ALLOW FOR INSTALLATION OF PNEUMATIC TUBE CABINET. REINSTALL AS CLOSE AS POSSIBLE TO THE ORIGINAL LOCATION.
8. REMOVE AND RETAIN EXISTING RECEPTACLE, OUTLET BOX, ASSOCIATED BRANCH CIRCUIT TO BE RELOCATED WITHIN THE ROOM NEAR EQUIPMENT BEING SERVED. COORDINATE EXACT LOCATION WITH OWNER PRIOR TO ROUGH-IN.

#### 100% CONSTRUCTION ISSUE

Revisions	Date	 2201 N. Collins, Suite 295 Arlington, Texas 76011-2659 (817) 461-0333 Fax: (817) 461-1025 E: info@fei-engineering.com FBI PROJECT # 13069 FEI Project No.: 13069	 Architecture ■ Planning ■ Interior Design 4949 Addison Circle ■ Addison, Texas 75001 MPI Project No.: 8130707	Seal	Seal  04/24/2015	Drawing Title <b>BUILDING CC - TOWER FOURTH FLOOR PLAN PTS STATION LOCATIONS - MECHANICAL/ELECTRICAL</b> Approved: Area Project Manager	Project Title <b>AUDIE L. MURPHY VA HOSPITAL PNEUMATIC TUBING SYSTEM</b>	Date 04/24/15 Project No. 671-13-104 Drawing No. <b>ME406</b> Dwg. of	Building Number <b>CC</b> Location 7400 Merton Minter San Antonio, TX 78229	Checked <b>SLT</b> Drawn <b>AOP</b>	 STVHCS San Antonio, Texas
-----------	------	---	--	------	---	---	---	---	---	--	---