

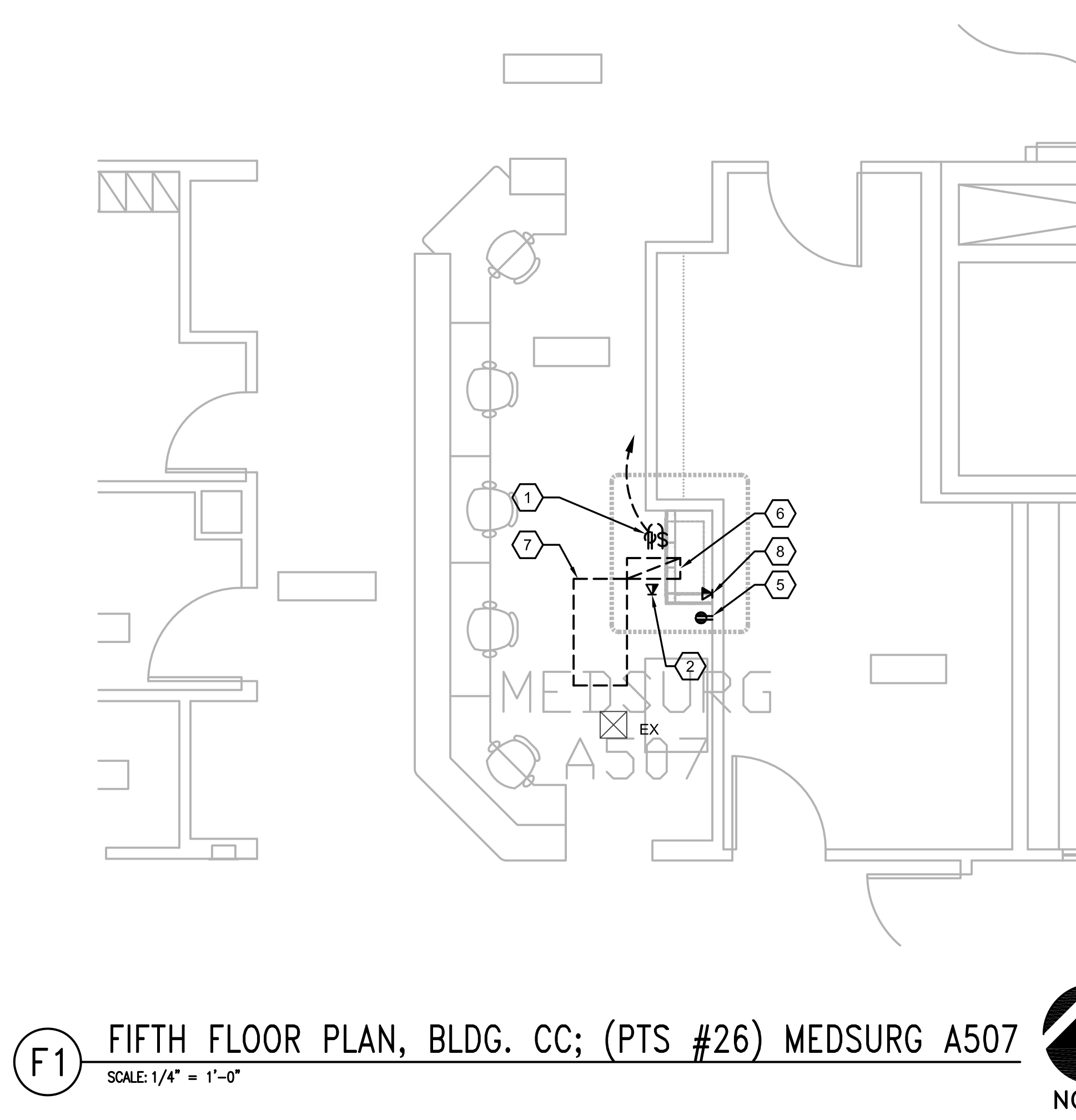
0 6 1 0 6 2 0 6 2 0 6 4 0 4 0 8 4 0 24 0 8 12 24

three inches = one foot
one and one-half inches=one foot
one inch=one foot
three-quarters inch = one foot
one-half inch = one foot
three-eighths inch = one foot
one-quarter inch = one foot
one-eighth inch = one foot

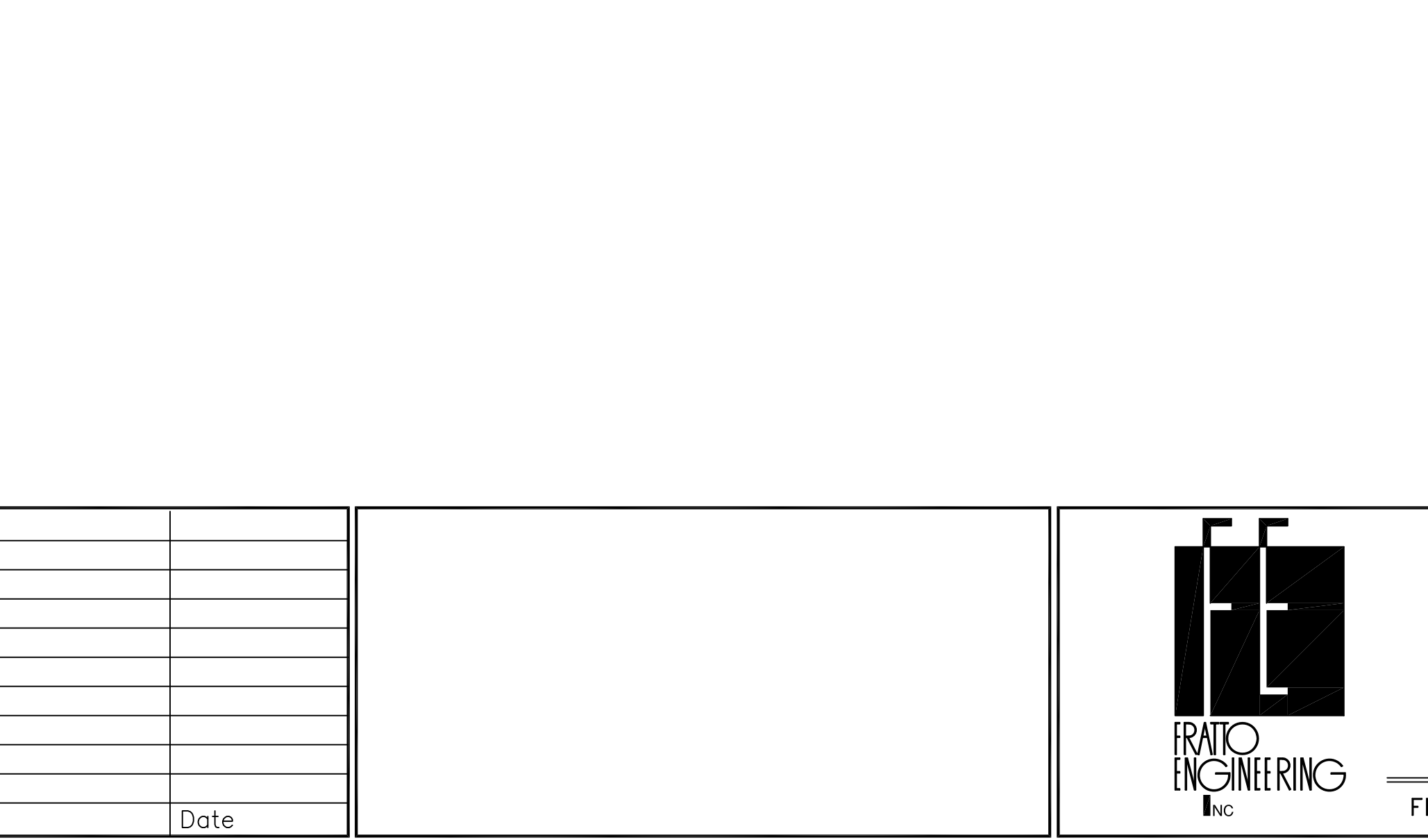
A
B
C
D
E
F

Computer Filenames:

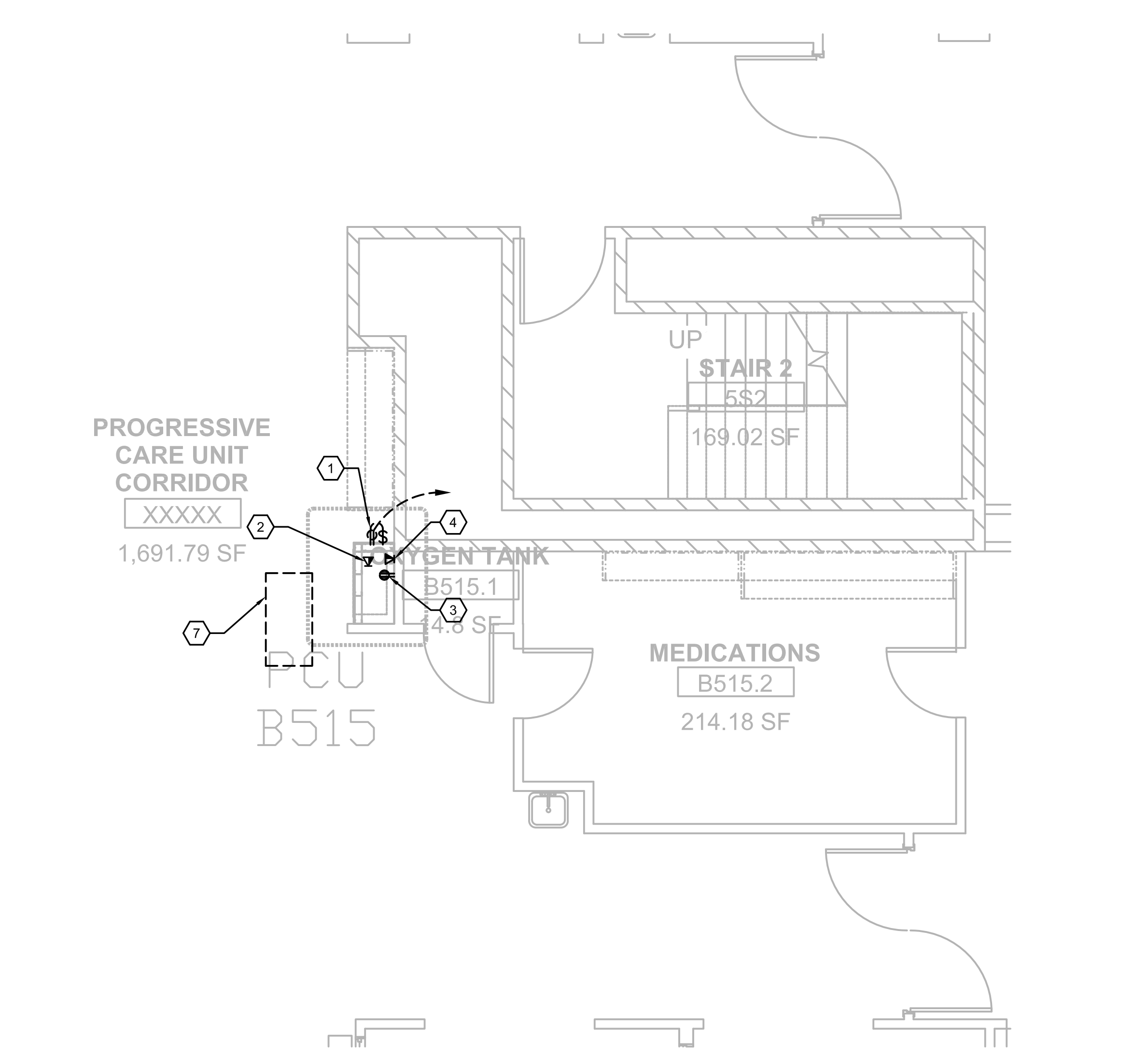
C1 FIFTH FLOOR PLAN, BLDG. CC; (PTS #28) MICU C508
SCALE: 1/4" = 1'-0"



F1 FIFTH FLOOR PLAN, BLDG. CC; (PTS #26) MEDSURG A507
SCALE: 1/4" = 1'-0"



F4 FIFTH FLOOR PLAN, BLDG. CC; (PTS #27) PCU NURSE STATION B515
SCALE: 1/4" = 1'-0"



- GENERAL NOTES:**
- REFER TO MEP000 FOR ADDITIONAL NOTES.
 - THE PNEUMATIC TUBE SYSTEM INFRASTRUCTURE DESIGN HEREIN BASED ON SWISSLOG HEALTHCARE SOLUTIONS EQUIPMENT. THE VA RESERVES THE RIGHT FOR APPROVAL OF ALTERNATE PNEUMATIC TUBE SYSTEMS MANUFACTURER.
 - CONTRACTOR SHALL RE-ROUTE ANY DUCTWORK, MECHANICAL OR PLUMBING PIPING, DAMPERS OR TERMINAL BOXES LOCATED IN THE CEILING PLENUM AS REQUIRED TO ACCOMMODATE NEW PNEUMATIC OR ASSOCIATED EQUIPMENT.
 - REFER E109 THRU E111 FOR PANELBOARD LOCATIONS AND ADDITIONAL INFORMATION.
- NOTES BY SYMBOL: '⬡'**
- PROVIDE 120V, 20A, DUPLEX RECEPTACLE WITH TOGGLE SWITCH BEHIND CABINET OF THE PNEUMATIC TUBE SYSTEM STATION.
 - PROVIDE TELEPHONE/DATA OUTLET WITH ETHERNET, CAT5 OUTLET CAPABILITY BEHIND PNEUMATIC TUBE SYSTEM STATION.
 - REMOVE AND RETAIN EXISTING RECEPTACLE, OUTLET BOX, ASSOCIATED BRANCH CIRCUIT TO BE RELOCATED WITHIN THE ROOM NEAR EQUIPMENT BEING SERVED. COORDINATE EXACT LOCATION WITH OWNER PRIOR TO ROUGH-IN.
 - REMOVE AND RETAIN EXISTING TELE/DATA OUTLET, OUTLET BOX, ASSOCIATED WIRING TO BE RELOCATED WITHIN THE ROOM NEAR EQUIPMENT BEING SERVED. COORDINATE EXACT LOCATION WITH OWNER PRIOR TO ROUGH-IN.
 - REMOVE AND RETAIN EXISTING RECEPTACLE, OUTLET BOX, ASSOCIATED BRANCH CIRCUIT TO BE RELOCATED AS REQUIRED FOR INSTALLATION OF PNEUMATIC TUBE CABINET. REINSTALL AS CLOSE AS POSSIBLE TO THE ORIGINAL LOCATION.
 - REMOVE AND RETAIN EXISTING HVAC DEVICE, ASSOCIATED DUCTWORK AS REQUIRED TO ALLOW FOR INSTALLATION OF PNEUMATIC TUBE CABINET. REINSTALL AS CLOSE AS POSSIBLE TO THE ORIGINAL LOCATION.
 - REMOVE AND RETAIN EXISTING LIGHT FIXTURE, ASSOCIATED BRANCH CIRCUIT TO ALLOW FOR INSTALLATION OF PNEUMATIC TUBE CABINET. REINSTALL AS CLOSE AS POSSIBLE TO THE ORIGINAL LOCATION.
 - REMOVE AND RETAIN EXISTING TELE/DATA, OUTLET BOX, ASSOCIATED WIRING TO BE RELOCATED AS REQUIRED TO ALLOW FOR INSTALLATION OF PNEUMATIC TUBE CABINET. REINSTALL AS CLOSE AS POSSIBLE TO THE ORIGINAL LOCATION.

100% CONSTRUCTION ISSUE

<div>Revisions</div> <table><tr><td> </td><td> </td></tr><tr><td> </td><td> </td></tr><tr><td> </td><td> </td></tr><tr><td> </td><td> </td></tr></table>									<div>FEI Project No.: 13069</div>	<div>MPI Architects</div> <div>Architecture ■ Planning ■ Interior Design</div> <div>4949 Addison Circle ■ Addison, Texas 75001</div> <div>MPI Project No.: 8130707</div>	<div>Seal</div>	<div>Seal</div>	<div>BUILDING CC - TOWER FIFTH FLOOR PLAN PTS STATION LOCATIONS - MECHANICAL/ELECTRICAL</div> <div>Approved: Area Project Manager</div>	<div>Project Title</div> <div>AUDIE L. MURPHY VA HOSPITAL PNEUMATIC TUBING SYSTEM</div>	<div>Date</div> <div>04/24/15</div>	<div>South Texas Veterans Health Care System</div>	<div>STVHCS San Antonio, Texas</div>
<div>Building Number</div> <div>CC</div>	<div>Checked</div> <div>SLT</div>	<div>Drawn</div> <div>AOP</div>	<div>Project No.</div> <div>671-13-104</div>														
<div>Location</div> <div>7400 Merton Minter San Antonio, TX 78229</div>	<div>Dwg. of</div>																
<div>Drawing No.</div> <div>ME407</div>																	