

**NOTE:**


1. OMIT FRAME AND BOLT PIPE ROLLERS DIRECTLY TO FOOTING WHERE OCCURS PER MECHANICAL.
2. FOOTING TO BE 2'-6" IN DIMENSION NOT SHOWN.

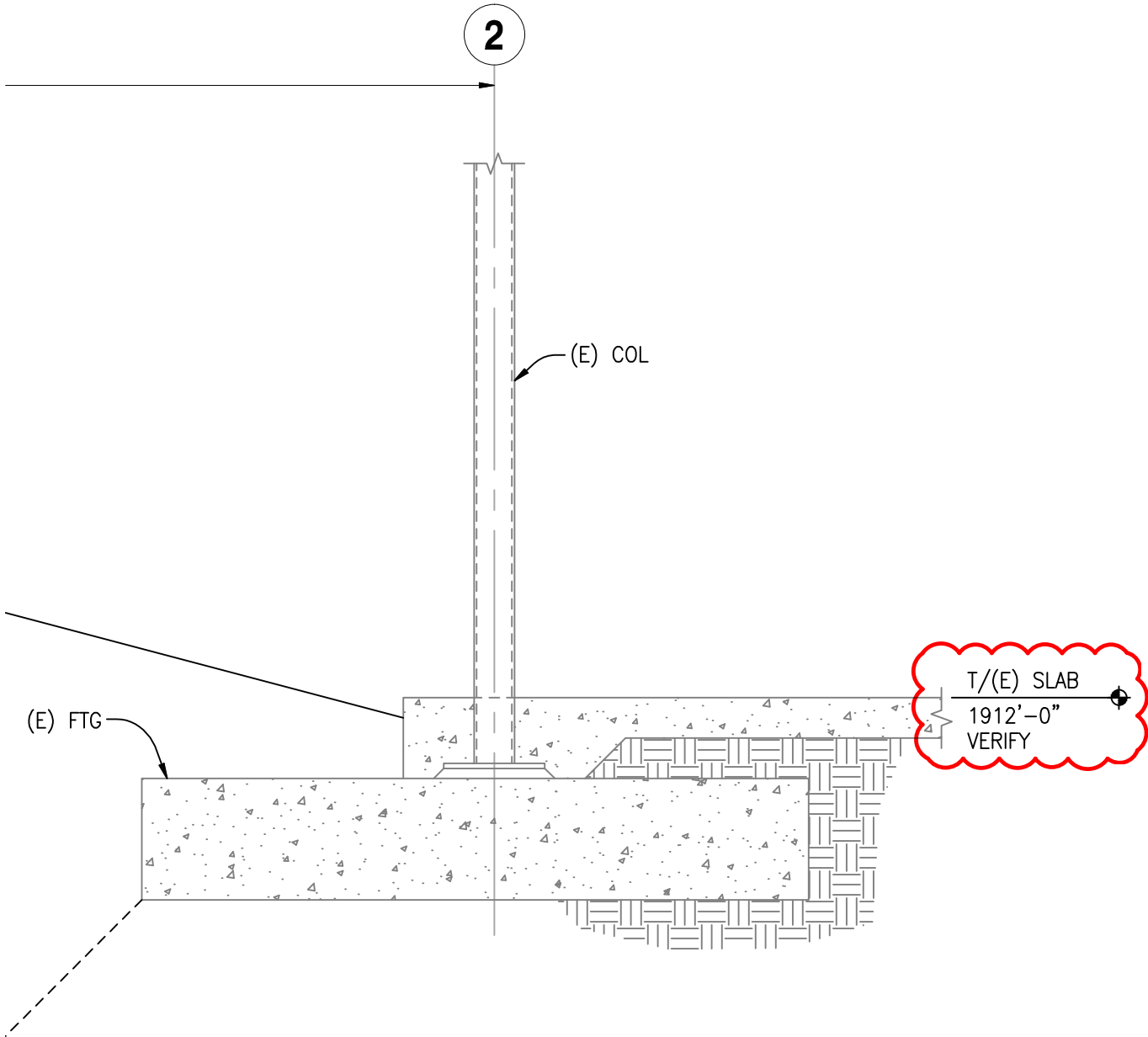
**PIPE ROLLER SUPPORT**

SCALE:  $\frac{3}{4}" = 1'-0"$


1

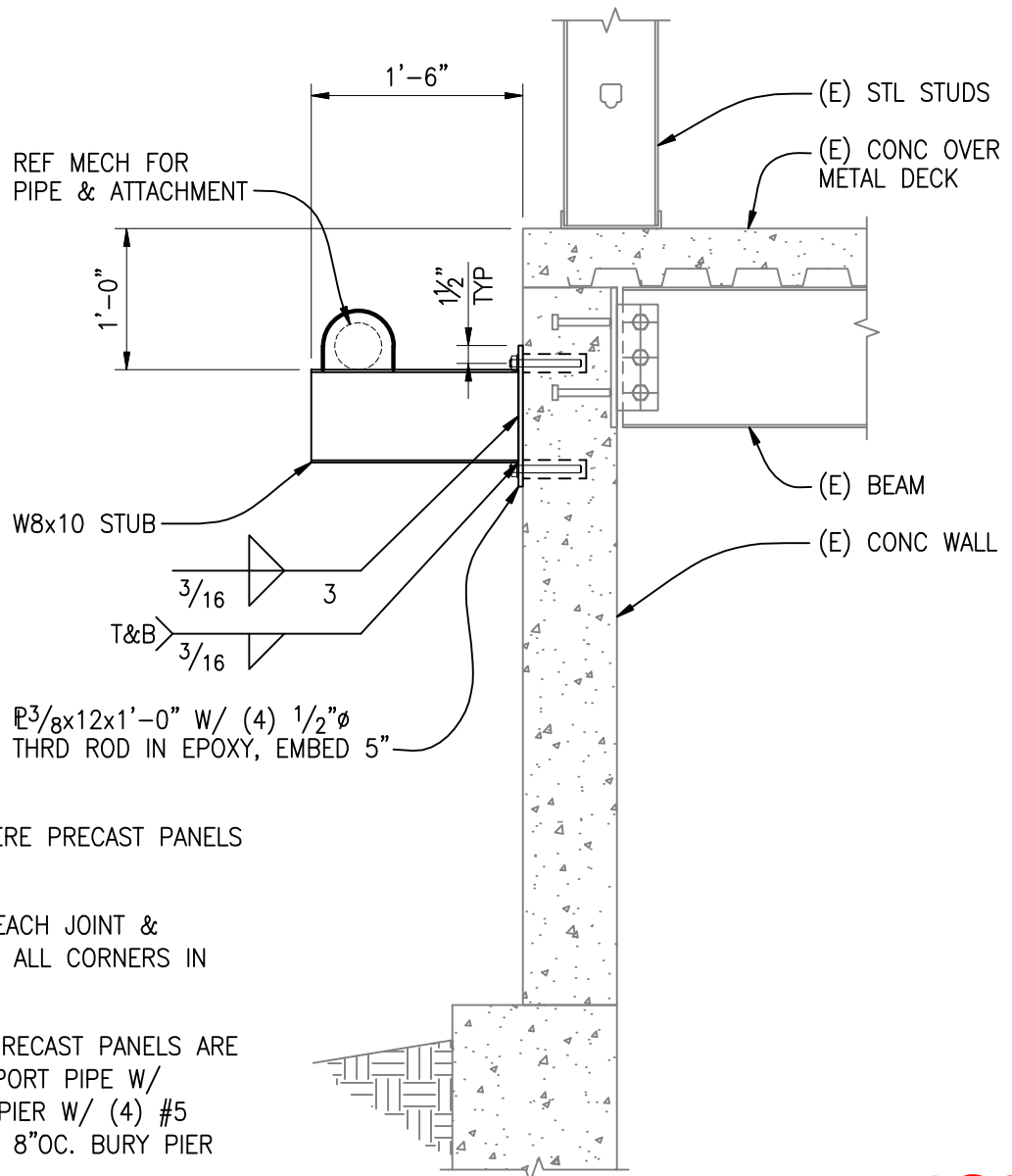
© Copyright 02/2016 D'Amato Conversano Inc. All Rights Reserved This document, and the ideas and designs may not be reused, in whole or in part, without written permission from D'Amato Conversano Inc. D'Amato Conversano Inc. disclaims any responsibility for its unauthorized use.

 <p>707 W. 2ND AVENUE SPOKANE, WASHINGTON 99201 PHONE: (509) 455-4448 • FAX: (509) 455-7492 WEBSITE: www.dci-engineers.com CIVIL / STRUCTURAL</p>	PROJECT NAME: INTENSIVE OUTPATIENT MENTAL HEALTH & EDUCATION BLDG	
	PROJECT NO: 13041-0246	SKETCH NO: CS-01
	DATE: 02/17/16	CONSTRUCTION FIELD SKETCH:
	BY: JWH	ADDENDUM 4 NEW DETAIL 1/S303



© Copyright 02/2016 D'Amato Conversano Inc. All Rights Reserved This document, and the ideas and designs may not be reused, in whole or in part, without written permission from D'Amato Conversano Inc. D'Amato Conversano Inc. disclaims any responsibility for its unauthorized use.

 <b>DCI</b> <b>ENGINEERS®</b> 707 W. 2ND AVENUE SPOKANE, WASHINGTON 99201 PHONE: (509) 455-4448 • FAX: (509) 455-7492 WEBSITE: www.dci-engineers.com <b>CIVIL / STRUCTURAL</b>	PROJECT NAME: INTENSIVE OUTPATIENT MENTAL HEALTH & EDUCATION BLDG	
	PROJECT NO: 13041-0246	SKETCH NO: CS-02
	DATE: 02/17/16	CONSTRUCTION FIELD SKETCH:  ADDENDUM 4 PARTIAL REVISED 13/S303
	BY: JWH	



#### NOTE:


1. USE BRACKETS WHERE PRECAST PANELS ARE REMOVED.
2. SUPPORT PIPE AT EACH JOINT & 8'-0"OC MAX & AT ALL CORNERS IN EACH DIRECTION.
3. AT AREAS WHERE PRECAST PANELS ARE NOT REMOVED SUPPORT PIPE W/ 2'-0"Ø SONOTUBE PIER W/ (4) #5 VERT & #4 TIES @ 8"OC. BURY PIER 2'-0" MINIMUM.

## TEMPORARY FIRE LINE SUPPORT

SCALE: 3/4"=1'-0"

3

© Copyright 03/2016 D'Amato Conversano Inc. All Rights Reserved This document, and the ideas and designs may not be reused, in whole or in part, without written permission from D'Amato Conversano Inc. D'Amato Conversano Inc. disclaims any responsibility for its unauthorized use.

 <p>707 W. 2ND AVENUE SPOKANE, WASHINGTON 99201 PHONE: (509) 455-4448 • FAX: (509) 455-7492 WEBSITE: www.dci-engineers.com CIVIL / STRUCTURAL</p>	PROJECT NAME: INTENSIVE OUTPATIENT MENTAL HEALTH & EDUCATION BLDG	
	PROJECT NO: 13041-0246	SKETCH NO: CS-03
	DATE: 03/02/16	CONSTRUCTION FIELD SKETCH:
	BY: JWH	ADDENDUM 5 NEW DETAIL 3/S304