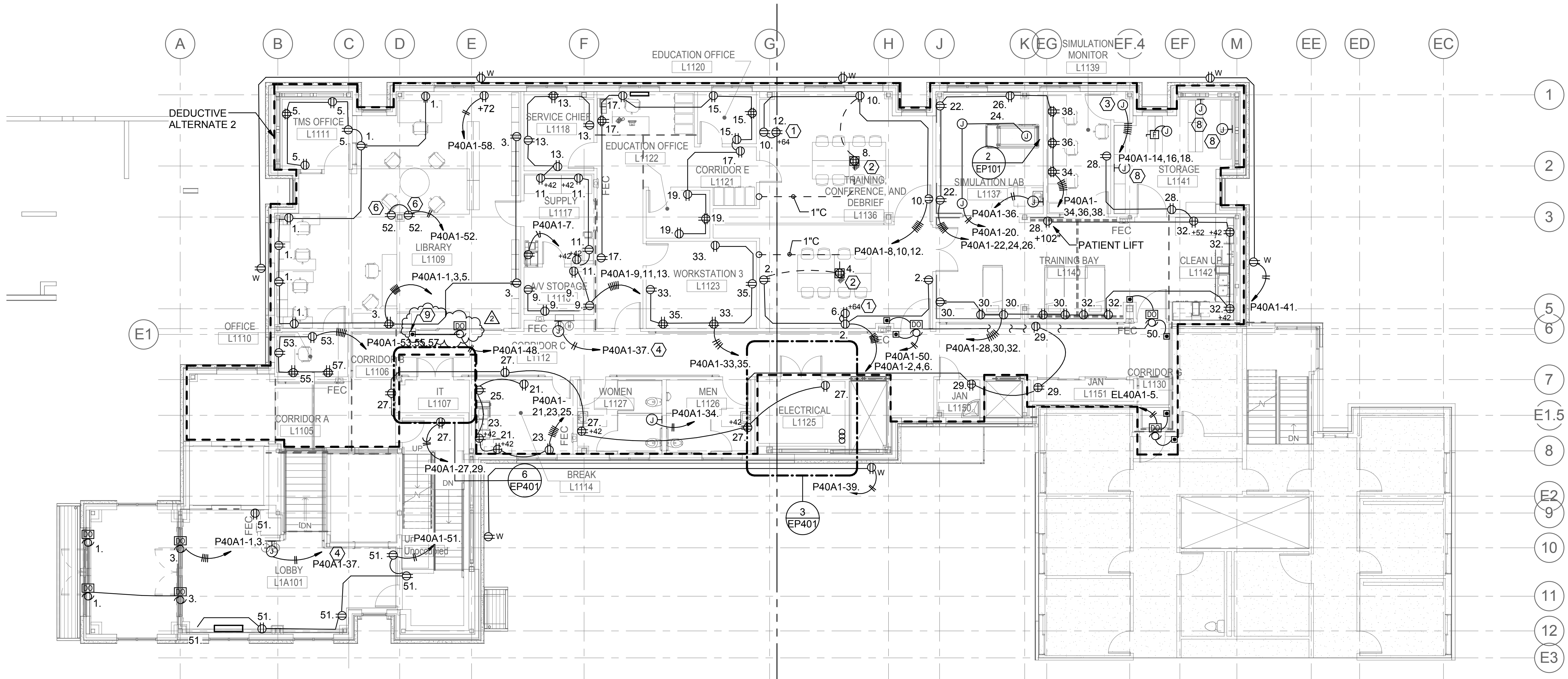


DEDUCTIVE ALTERNATE BID AREA #2
CONSTRUCTION NOTES:

1. OMIT ALL POWER DEVICES AND ASSOCIATED CIRCUITS AND PATHWAY IN WALLS NOT BEING BUILT AS PART OF DEDUCT.
2. PROVIDE CONDUIT PATHWAY AND BACKBOXES FOR ALL DEVICES ON FINISHED WALLS WITHIN DEDUCT AREA.
3. PROVIDE CONVENIENCE RECEPTACLE AT LOCATIONS IN FINISHED WALLS WITHIN DEDUCT AREA SPACED APPROXIMATELY 50'-0" APART.

SHEET KEYNOTES

1. PROVIDE DEDICATED RECEPTACLE FOR OFCI SMARTBOARD. INSTALL ADJACENT TO DATA OUTLET SHOWN ON TECHNOLOGY PLAN. COORDINATE INSTALLATION LOCATION AND ELEVATION WITH ARCHITECTURAL ELEVATIONS AND PLANS PRIOR TO ROUGH-IN.
2. PROVIDE COMBINATION POWER/DATA POKE-THRU DEVICE (WIREMOLD 6ATO SERIES OR EQUAL). PROVIDE LID AND TRIM TO ENSURE INSTALLATION IS FLUSH WITH FINISHED FLOOR. CONFIRM FLOOR TYPE PRIOR TO ORDERING.
3. PROVIDE CIRCUITS AS INDICATED FOR OWNER FURNISHED EQUIPMENT. COORDINATE REQUIREMENTS WITH OWNER.
4. PROVIDE GFCI TYPE CIRCUIT BREAKER IN PANEL INDICATED.
5. PROVIDE 120V CONNECTION FOR AUTOMATIC FLUSH VALVES. COORDINATE REQUIREMENTS WITH PLUMBING PLANS.
6. PROVIDE 1-1/2" DEEP BACKBOX FOR RECEPTACLE.
7. PROVIDE RED DUPLEX RECEPTACLE. LABEL 'FOR SIMULATION ONLY'.
8. PROVIDE JUNCTION BOX WITH BLANK FACEPLATE TO MATCH BUILDING STANDARDS AND CONDUIT TO ACCESSIBLE CEILING SPACE FOR FUTURE RECEPTABLES.
9. PROVIDE RACEWAY AND WIRING BETWEEN ACTUATOR AND OPERATOR AND CONNECT COMPLETE.

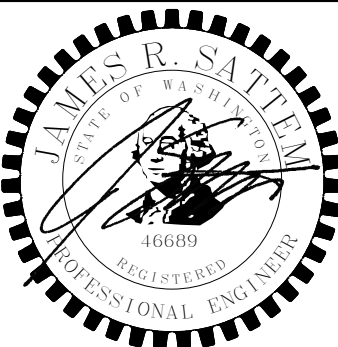


1 LEVEL 1 PLAN - POWER
1/8" = 1'-0"

2 SIM LAB HEADWALL ENLARGED PLAN
1/4" = 1'-0"

2	ADDENDUM 5	03/01/2016
1	ADDENDUM 4	02/17/2016
	BID DOCUMENT	11/02/2015
	100% CONSTRUCTION DOCUMENT	1/26/2015
		12/30/14
	99% CONSTRUCTION DOCUMENT	12/17/14
	95% CONSTRUCTION DOCUMENT	10/13/14
	65% DESIGN DEVELOPMENT	6/27/14
	SCHEMATIC DESIGN	3/28/14
Revisions	ISSUES	Date

CONSULTANTS:



ARCHITECT/ENGINEERS:



Drawing Title
LEVEL 1 PLAN - POWER

Approved: Project Director
Approver

Project Title
INTENSIVE OUTPATIENT MENTAL HEALTH
AND EDUCATION BUILDING
SPOKANE VA MEDICAL CENTER
SPOKANE, WASHINGTON 99205

Location
SPOKANE, WASHINGTON 99205

Issue Date
11/02/2015

Checked
JRS

Drawn
IEI

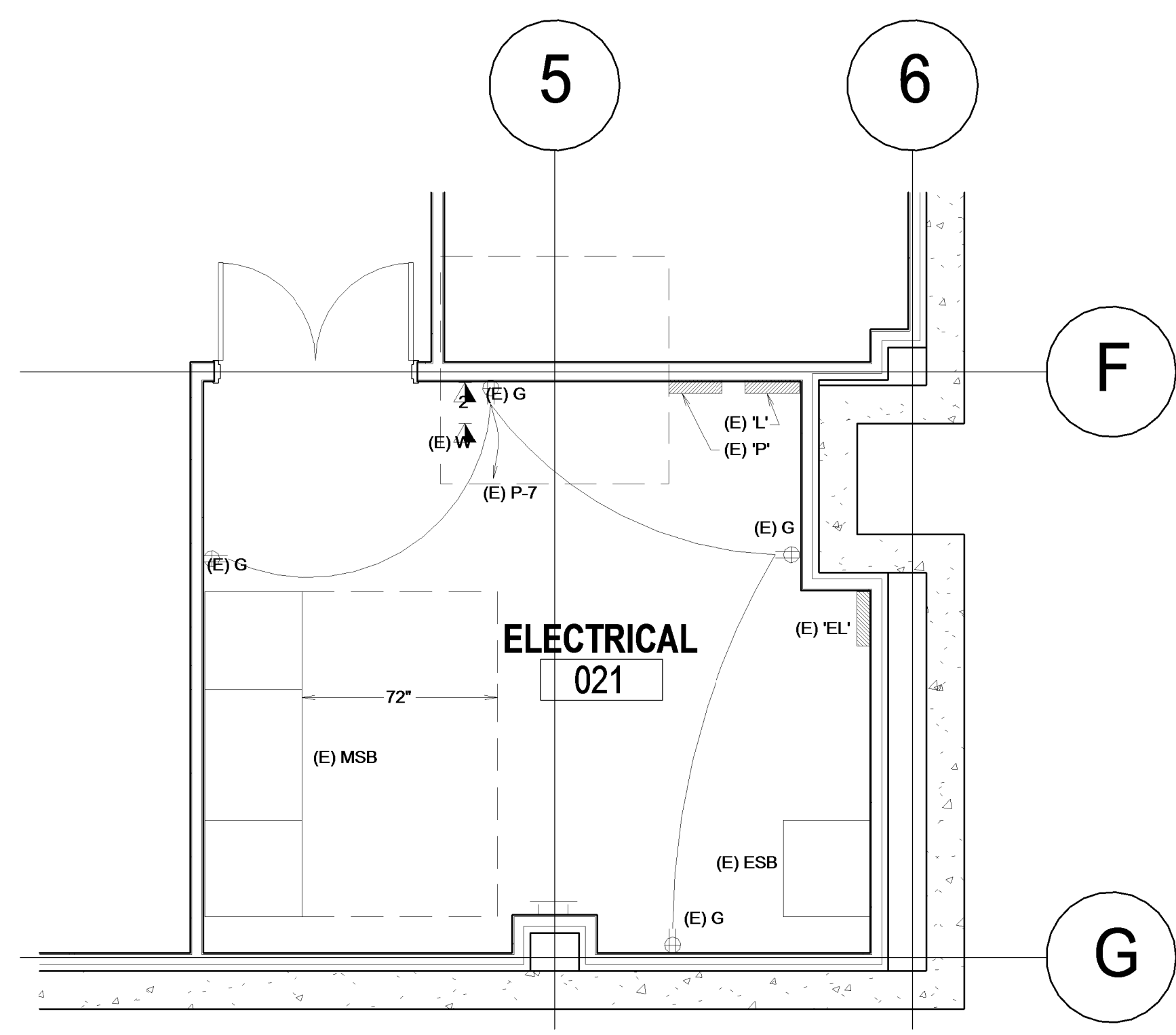
Project Number
668-313
Building Number
40A

Drawing Number
EP101

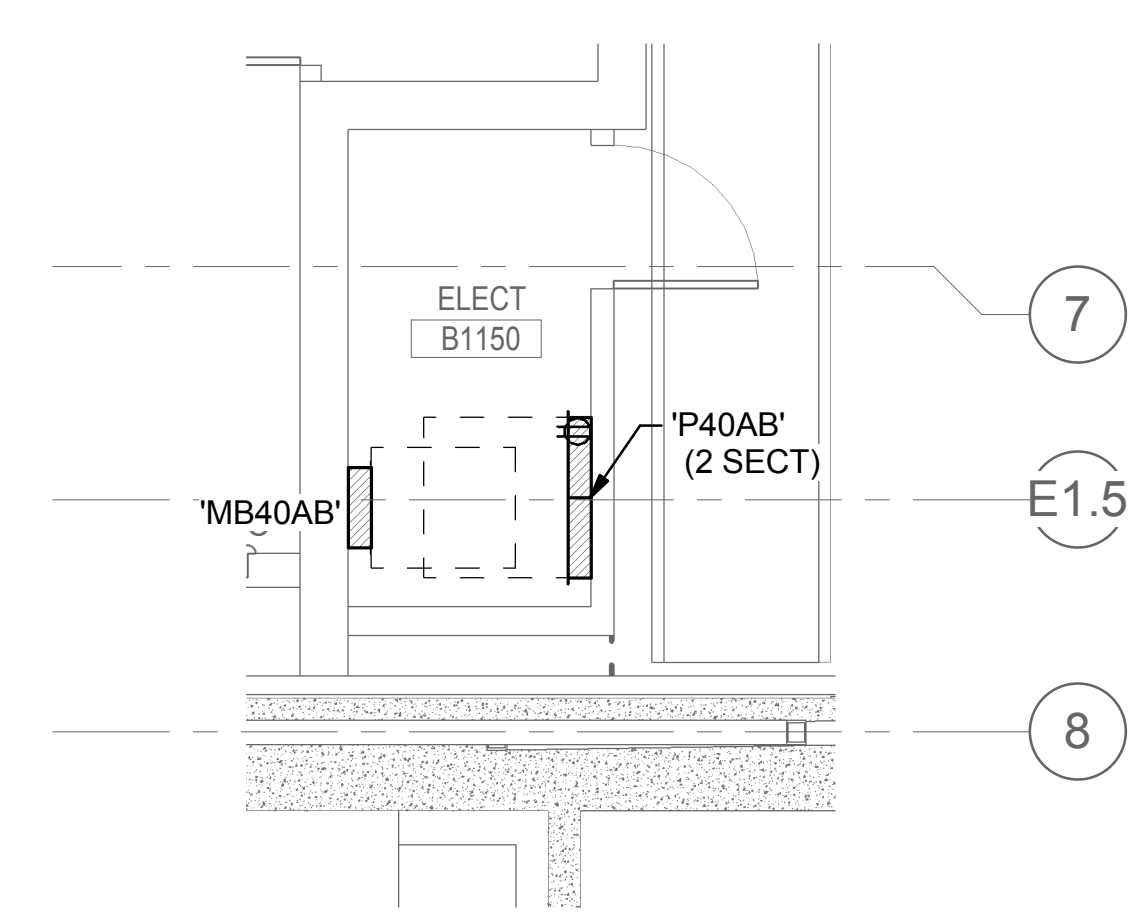
Dwg. of

Office of
Construction
and Facilities
Management

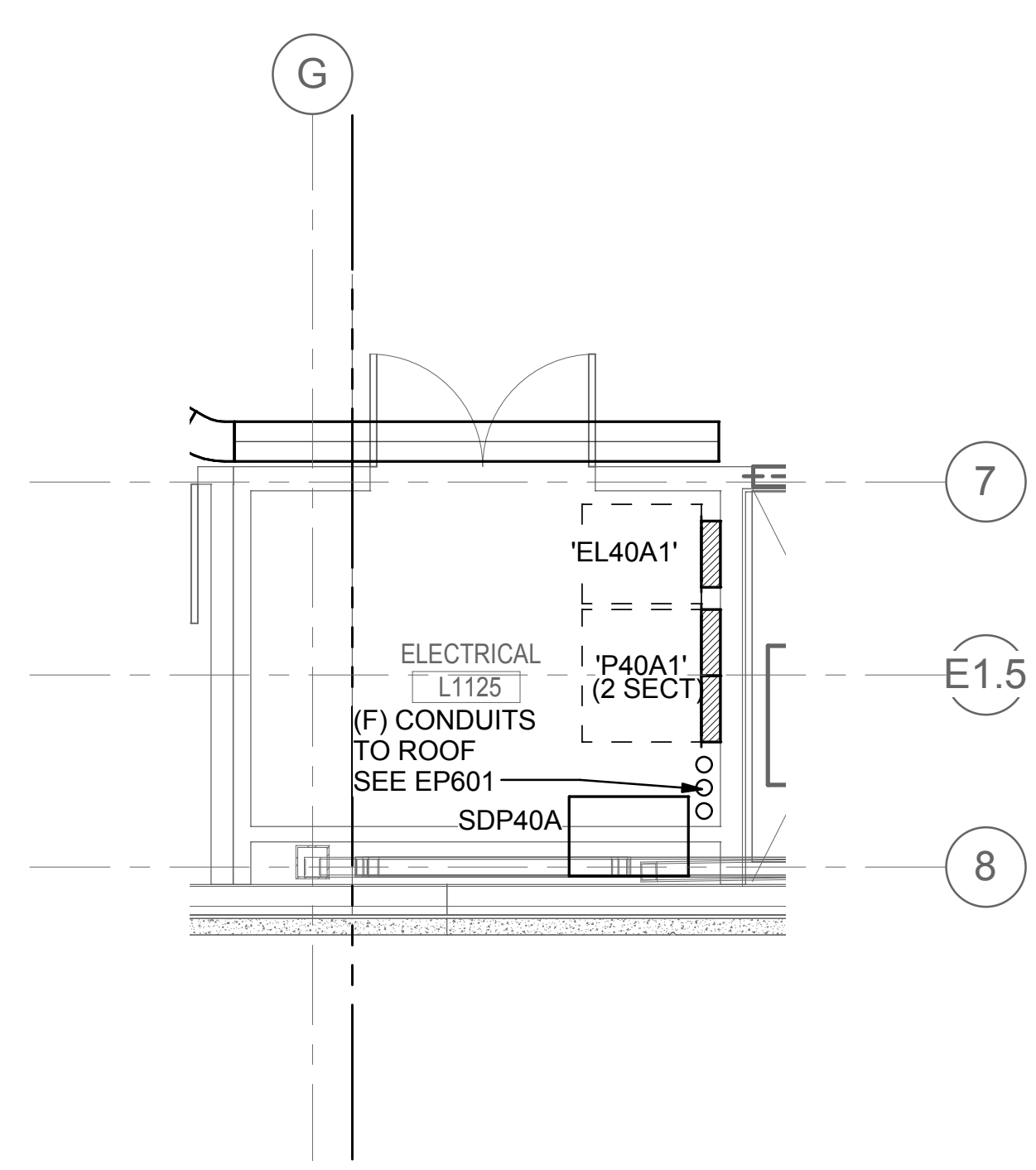




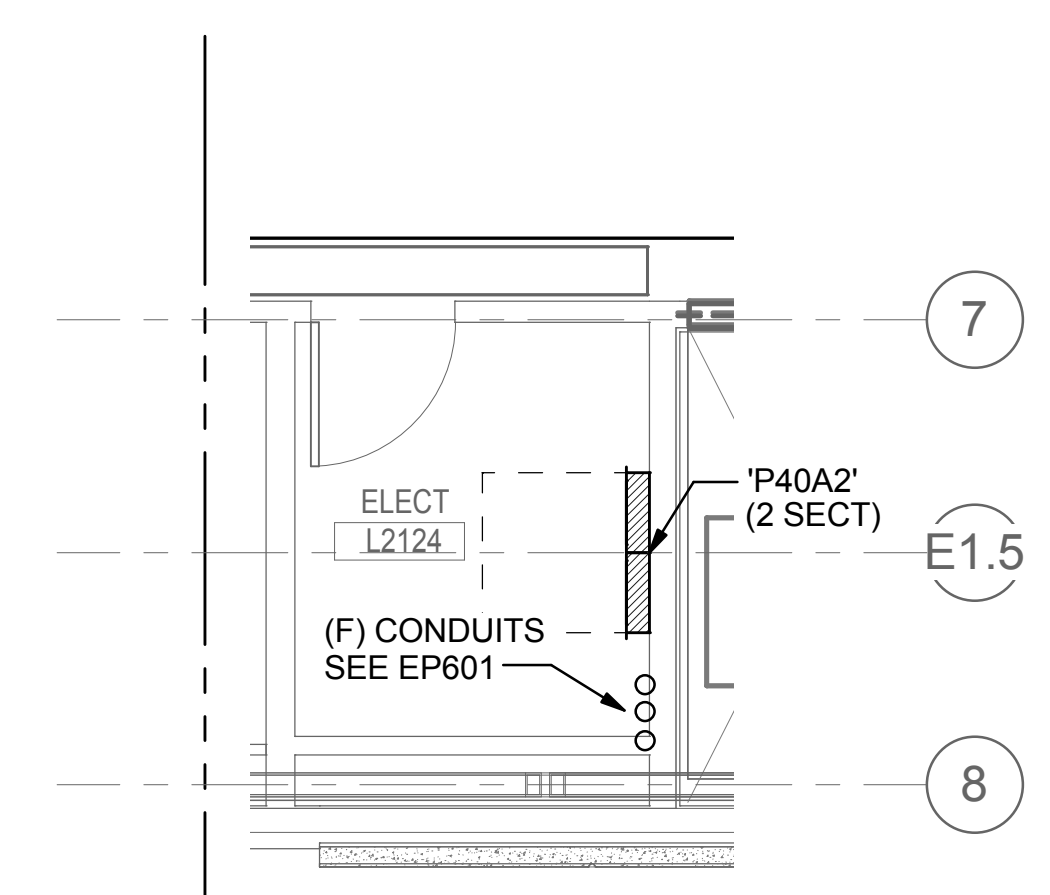
1 BUILDING 40 MAIN ELECTRICAL ROOM
1/4" = 1'-0"



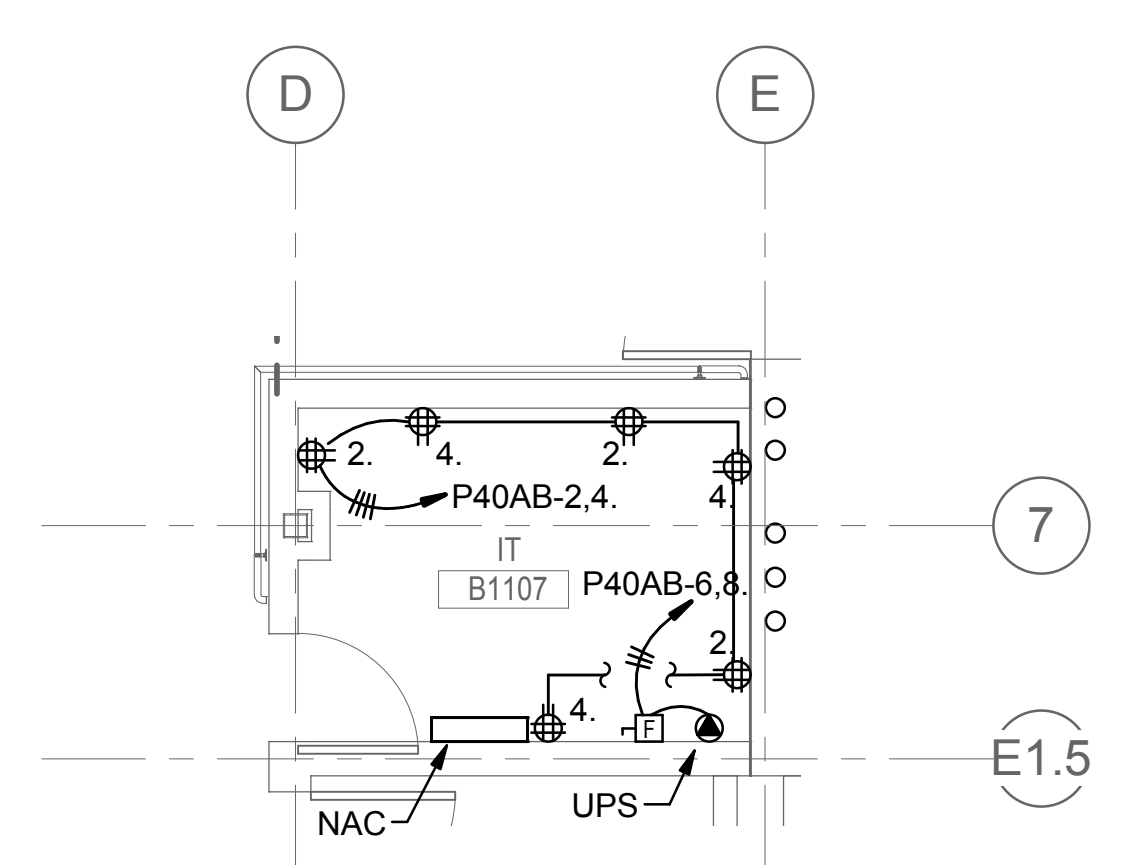
2 BASEMENT PLAN - ELECTRICAL ROOM
1/4" = 1'-0"



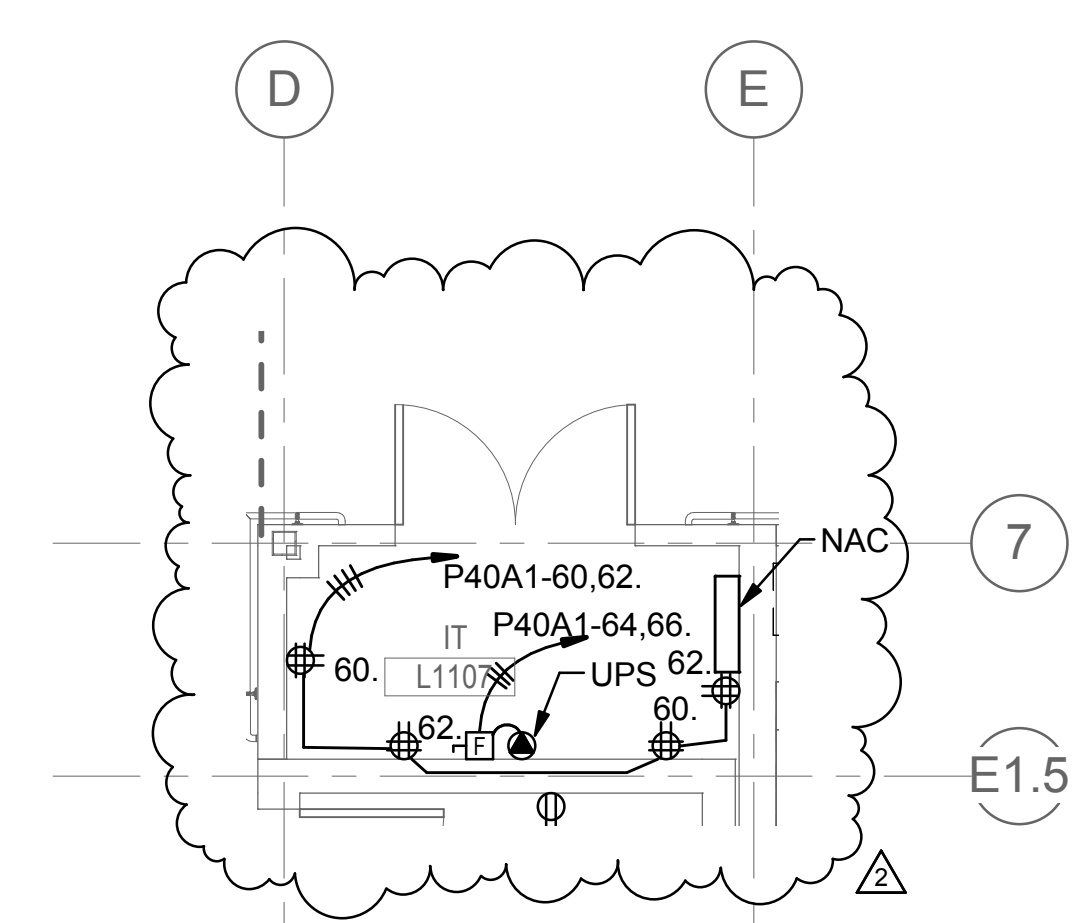
3 LEVEL 1 PLAN - ELECTRICAL ROOM
1/4" = 1'-0"



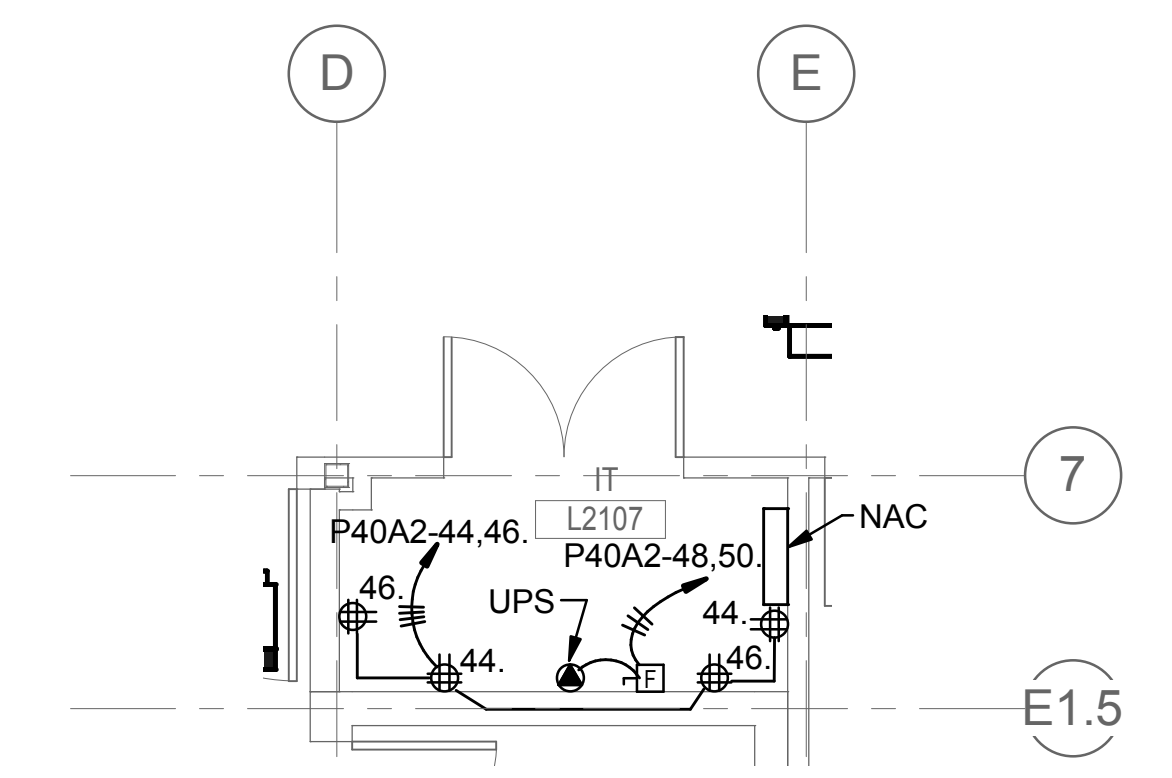
4 LEVEL 2 PLAN - ELECTRICAL ROOM
1/4" = 1'-0"



5 ENLARGED PLAN - IT B1107
1/4" = 1'-0"



6 ENLARGED PLAN - IT L1107
1/4" = 1'-0"



7 ENLARGED PLAN - IT L2107
1/4" = 1'-0"

2	ADDENDUM 5	03/01/2016
1	ADDENDUM 4	02/17/2016
	BID DOCUMENT	11/02/2015
	100% CONSTRUCTION DOCUMENT	1/26/2015
		12/30/14
	99% CONSTRUCTION DOCUMENT	12/17/14
	95% CONSTRUCTION DOCUMENT	10/13/14
	65% DESIGN DEVELOPMENT	6/27/14
	SCHEMATIC DESIGN	3/28/14
Revisions	ISSUES	Date

CONSULTANTS:

PROJECT: 2013-0512
CONTACT: Mike Monroe

INTERFACE
ENGINEERING

100 SW Main Street
Suite 1600
Portland, OR 97204
TEL: 503.382.2266
FAX: 503.382.2262
www.interfaceengineering.com

ARCHITECT/ENGINEERS:

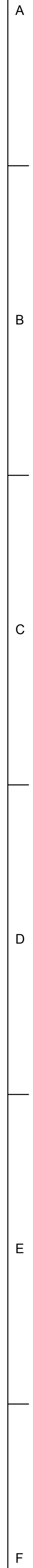
KMA
ARCHITECTS

14410 SE Petrovitsky Rd. Suite 206
Renton, WA 98058
425-291-7078

Drawing Title ENLARGED POWER PLANS	Project Title INTENSIVE OUTPATIENT MENTAL HEALTH AND EDUCATION BUILDING SPOKANE VA MEDICAL CENTER SPOKANE, WASHINGTON 99205	Project Number 668-313 Building Number 40A
Approved: Project Director Approver	Location SPOKANE, WASHINGTON 99205	Drawing Number EP401 Dwg. of
	Issue Date 11/02/2015	Checked JRS Drawn IEI

Office of
Construction
and Facilities
Management

Department of
Veterans Affairs



Panel 'EL40A1'

Ckt.	No.	Description / Location	Load (VA)/Type	C.B. A/Pole	Note	Ph.	Note	C.B. A/Pole	Load (VA)/Type	Description / Location	Ckt.
1	AUTO-DOORS L1A101	600 G	201	A	201	500	L	L - EM BASEMENT CORRIDORS	2		
3	AUTO-DOORS L1A101	600 G	201	B	201	500	L	L - EM BASEMENT	4		
4	AUTO-DOORS L11130	900 G	201	C	201	500	L	L - 1ST FLOOR CORRIDORS	6		
7	AUTO-DOOR L1109	300 G	201	A	201	500	L	L - 1ST FLOOR	8		
9	AUTO-DOOR L2120	300 G	201	B	201	500	L	L - EM 2ND FLOORCORRIDORS	10		
11	SPARE BREAKER	201	C	201	500	L	L - EM 2ND FLOOR	12			
13	BUSSED SPACE	A	201	500	L	L - EM CON. ROOM B1120	14				
15	BUSSED SPACE	B	201	500	L	L - EXIT SIGNS BASEMENT	16				
17	BUSSED SPACE	C	201	500	L	L - EXIT SIGNS 1ST FLOOR	18				
19	BUSSED SPACE	A	201	500	L	L - EXIT SIGNS 2ND FLOOR	20				
21	BUSSED SPACE	B	201	SPARE BREAKER	22						
23	BUSSED SPACE	C	201	SPARE BREAKER	24						
25	BUSSED SPACE	A	BUSSED SPACE	26							
27	BUSSED SPACE	B	BUSSED SPACE	28							
29	BUSSED SPACE	C	BUSSED SPACE	30							
31	BUSSED SPACE	A	BUSSED SPACE	32							
33	BUSSED SPACE	B	BUSSED SPACE	34							
35	BUSSED SPACE	C	BUSSED SPACE	36							
37	EP-1 (ON ROOF)	1,320 M	20/3	A	20/3	1,320 M	B	EP-2 (ON ROOF)	38		
39	EP-1 (ON ROOF)	1,320 M	—	B	—	1,320 M	—	—	40		
41	—	1,320 M	—	C	—	1,320 M	—	—	42		

Notes:	Accessories:
1.	
2.	Provide Double Lugs

Total: 17.86 KVA

AT EXISTING MAIN SWITCHBOARD 'ESB'.
MAXIMUM 12-MONTH PEAK DEMAND WAS 3.93 KW, AS PER
EQUIPMENT METER

(E) MAXIMUM DEMAND: 3.93 KW


+25% SAFETY FACTOR: 4.91 KVA

+ADDED (NEW) DEMAND LOAD: 20.63 KVA

AL NEW DEMAND LOAD: 25.54 KVA

TOTAL AMPS (208V, 3PHASE):	70.90 AMP
----------------------------	-----------

Office of
Construction
and Facilities
Management

 Department of
Veterans AffairsCONSULTANTS:

KMA
INC.
ARCHITECTS

14410 SE Petrovitsky Rd. Suite 206
Renton, WA 98058
425-291-7078

Project Title	INTENSIVE OUTPATIENT MENTAL HEALTH AND EDUCATION BUILDING
SPOKANE VA MEDICAL CENTER	
SPOKANE, WASHINGTON 99205	

Location
SPOKANE, WASHINGTON 99205

STON 99205

Project Number
668-313

Building Number
40A

Drawing Number

EP61

Dwg of

three inches = one foot
one and one half inches = one foot
one inch = one foot
three quarters inch = one foot
three half inch = one foot
three eighths inch = one foot
one quarter inch = one foot
one eighth inch = one foot

DEDUCTIVE ALTERNATE BID AREA #1
CONSTRUCTION NOTES:

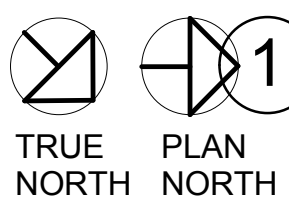
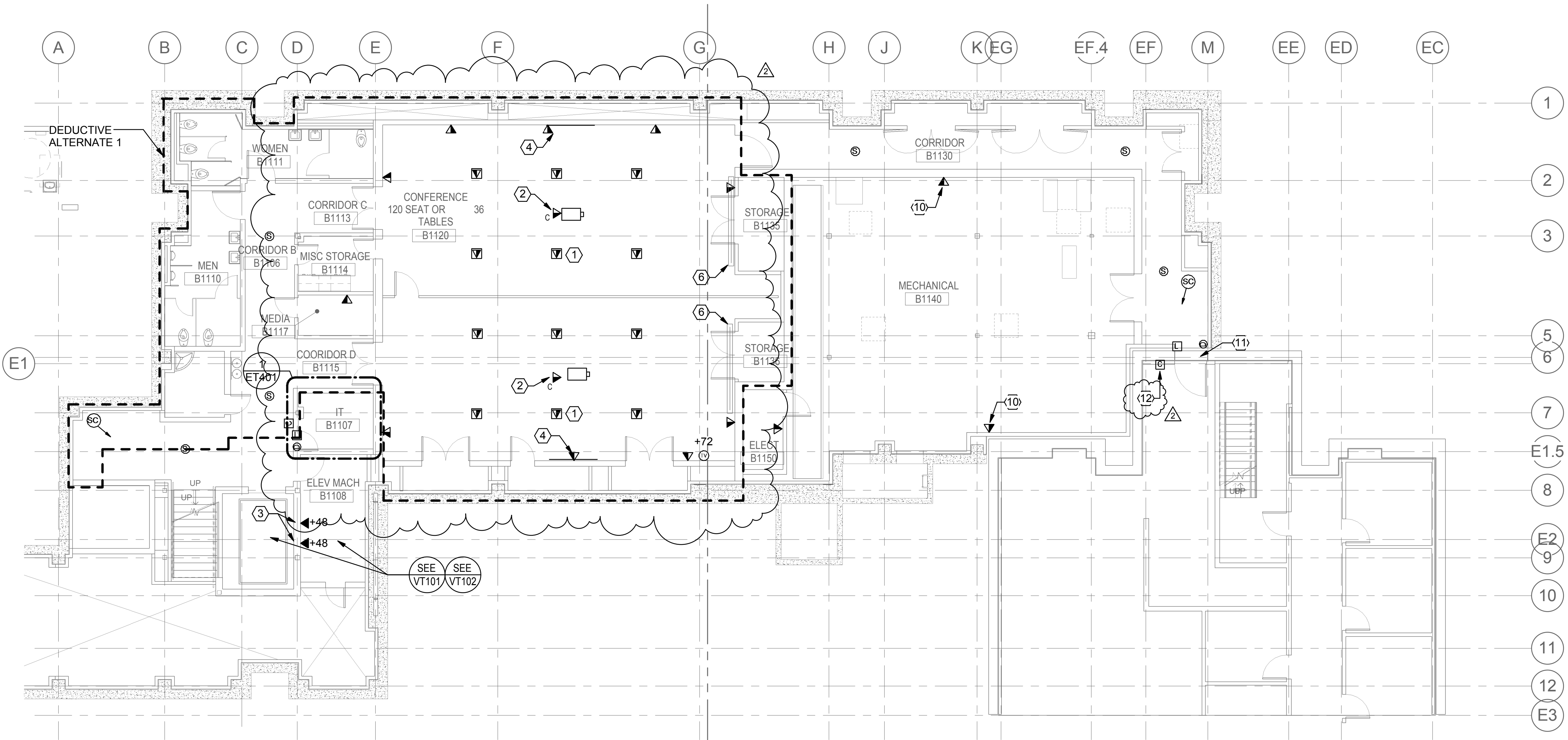
1. OMIT ALL TELECOMMUNICATIONS, AV AND SECURITY DEVICES FROM AREA INDICATED.
2. PROVIDE SPARE CONDUIT SLEEVES BETWEEN THE TELECOM ROOMS.

GENERAL SHEET NOTES

- A EXTEND SECURITY CAMERA AND DOOR ACCESS CONTROLS CABLE TO EXISTING DMP MODEL XR500N SECURITY CONTROL PANEL SYSTEM IN BUILDING 40. COORDINATE WITH ALLIED FIRE & SECURITY FOR CONNECTION TO EXISTING SYSTEM.

SHEET KEYNOTES

- 1 TYPICAL OF 12 ON THIS SHEET, PROVIDE COMBINATION POWER/DATA RECESSED FLOORBOX. ROUTE ALL DATA CONDUIT BACK TO CEILING SPACE OF IT ROOM. SEE ELECTRICAL PLAN EP100.
- 2 PROVIDE CEILING MOUNTED COMMUNICATIONS OUTLET FOR OFCI PROJECTOR. COORDINATE INSTALLATION LOCATION WITH OWNER PRIOR TO ROUGH-IN.
- 3 PROVIDE (2) DEDICATED TELEPHONE OUTLETS FOR ELEVATORS. (1) FOR EACH ELEVATOR.
- 4 SMART BOARD LOCATION - MOUNT SMART BOARD SO THAT TOP OF BOARD IS AT 6'-6" FROM FINISHED FLOOR.
- 5 NOT USED.
- 6 POWERED PROJECTION SCREEN FLUSH MOUNTED IN CEILING.
- 7 NOT USED.
- 8 NOT USED.
- 9 NOT USED.
- 10 COMMUNICATIONS OUTLET FOR DDG. COORDINATE EXACT LOCATION WITH DIVISION 23 SPECIFICATIONS.
- 11 PROVIDE SEISMIC FITTINGS FOR CONDUITS AT EXPANSION JOINT BETWEEN BUILDING 40A AND BUILDING 40.
- 12 REFER TO DETAIL 3/ET601 FOR SINGLE ACCESS DOOR CARD DETAIL.

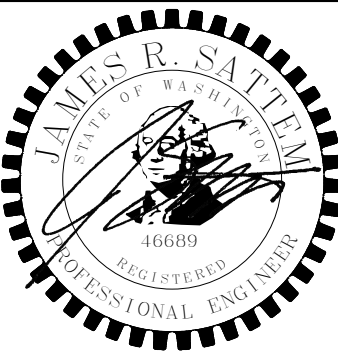


BASEMENT PLAN - TECHNOLOGY
1/8" = 1'-0"

2	ADDENDUM 5	03/01/2016
1	ADDENDUM 4	02/17/2016
	BID DOCUMENT	11/02/2015
	100% CONSTRUCTION DOCUMENT	1/26/2015
		12/30/14
	99% CONSTRUCTION DOCUMENT	12/17/14
	95% CONSTRUCTION DOCUMENT	10/13/14
	65% DESIGN DEVELOPMENT	6/27/14
	SCHEMATIC DESIGN	3/28/14
Revisions	ISSUES	Date

CONSULTANTS:

PROJECT 2013-0512
CONTACT Michael Troyer
INTERFACE
ENGINEERING
100 SW Main Street
Suite 1600
Portland, OR 97204
TEL 503.382.2266
FAX 503.382.2262
www.interfaceengineering.com



ARCHITECT/ENGINEERS:

KMA
ARCHITECTS
14410 SE Petrovitsky Rd. Suite 206
Renton, WA 98058
425-291-7078

Drawing Title
**BASEMENT LEVEL PLAN -
TECHNOLOGY**

Approved: Project Director
Approver

Project Title
**INTENSIVE OUTPATIENT MENTAL HEALTH
AND EDUCATION BUILDING**
SPOKANE VA MEDICAL CENTER
SPOKANE, WASHINGTON 99205

Location
SPOKANE, WASHINGTON 99205

Issue Date
11/02/2015

Checked
MT

Drawn
JN

Project Number
668-313
Building Number
40A
Drawing Number
ET100
Dwg. of

**BID DOCUMENT
NOVEMBER/02/2015**

Office of
Construction
and Facilities
Management



