

PROJECT: Install Grease Trap

PROJECT NO: 623-15-003

Jack C. Montgomery VA Medical Center
Muskogee, Oklahoma



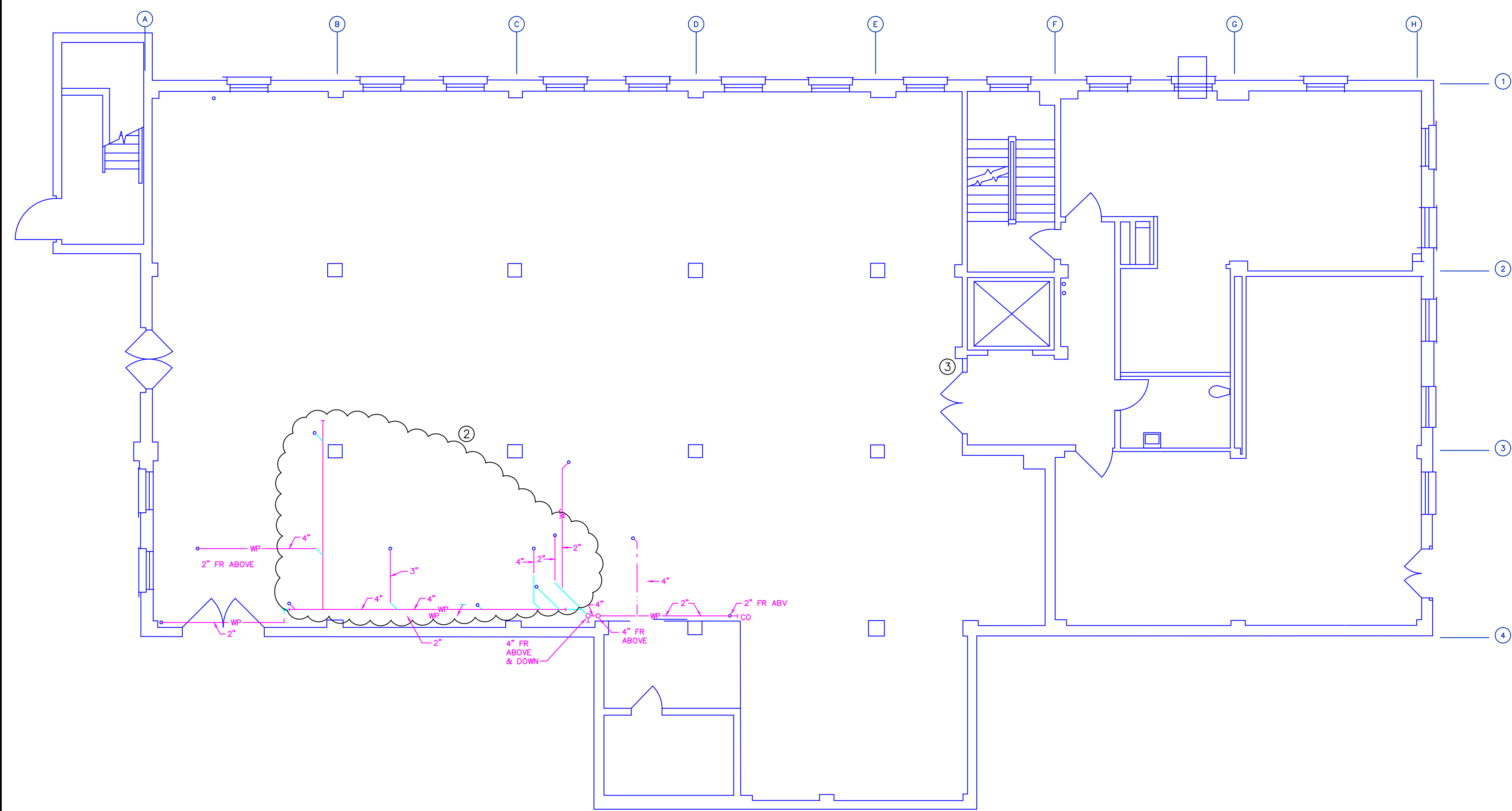
INDEX OF DRAWINGS

- TS-1 Title Sheet
- PD-1 Demolition Plan
 - P-1 Sub-Basement Plan
 - P-2 First Floor and Basement Plan

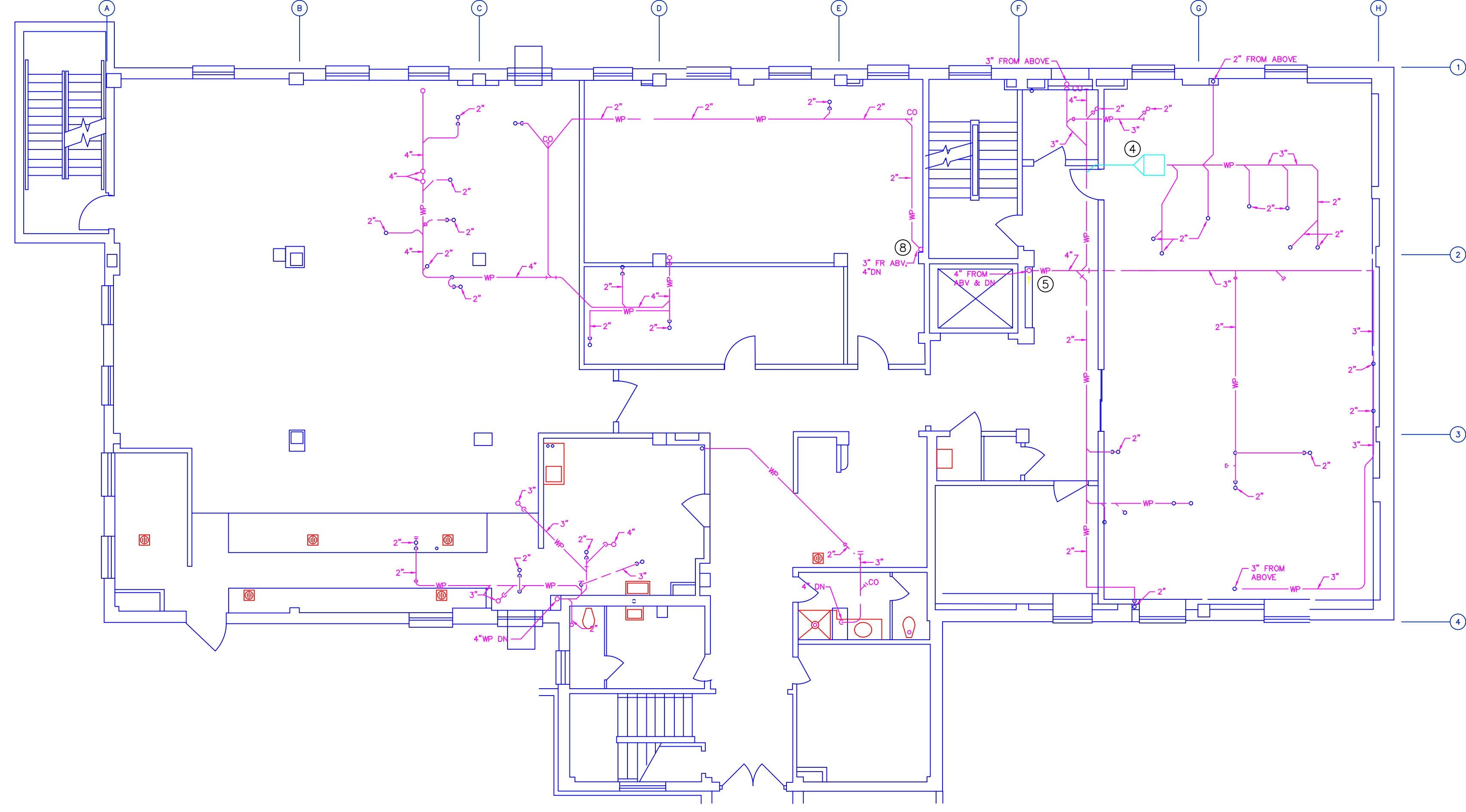
APPROVED Medical Center Director

<div>Revisions</div>		<div>Date</div>	<div>VA Form 08-6231</div>	<div>Dept. of Veterans Affairs Jack C. Montgomery Medical Center 1011 Honor Heights Drive Muskogee, Oklahoma 74401</div>	<div>APPROVED Medical Center Director</div>	<div>APPROVED Associate Director</div>	<div>APPROVED Chief of Staff</div>	<div>APPROVED Chief of Engineering Service</div>	<div>APPROVED Chief of Nutrition and Food Services</div>	<div>APPROVED Certifier/Kitchen Supervisor</div>	<div>APPROVED President AFGE 2250</div>	<div>APPROVED Safety Manager</div>	<div>APPROVED Infection Control Nurse</div>	<div>APPROVED Industrial Hygienist</div>	<div>APPROVED DMO Supervisor</div>	<div>Drawing Title</div>		<div>Project Title</div>			<div>Date</div>	<div>Department of Veterans Affairs</div>
<div>TITLE SHEET</div>		<div>INSTALL GREASE TRAP</div>														<div>03/03/2016</div>						
<div>Project Number</div>	<div>Building Number</div>	<div>Designed By</div>														<div>Drawn By</div>	<div>Checked By</div>	<div>Drawing Number</div>				
<div>623-15-003</div>	<div>24</div>	<div>BKP</div>														<div>BKP</div>	<div>EEC</div>	<div>TS-1</div>				
																<div>Location</div>	<div>Jack C. Montgomery VAMC Muskogee, OK</div>			<div>Dwg. 1 of 4</div>		

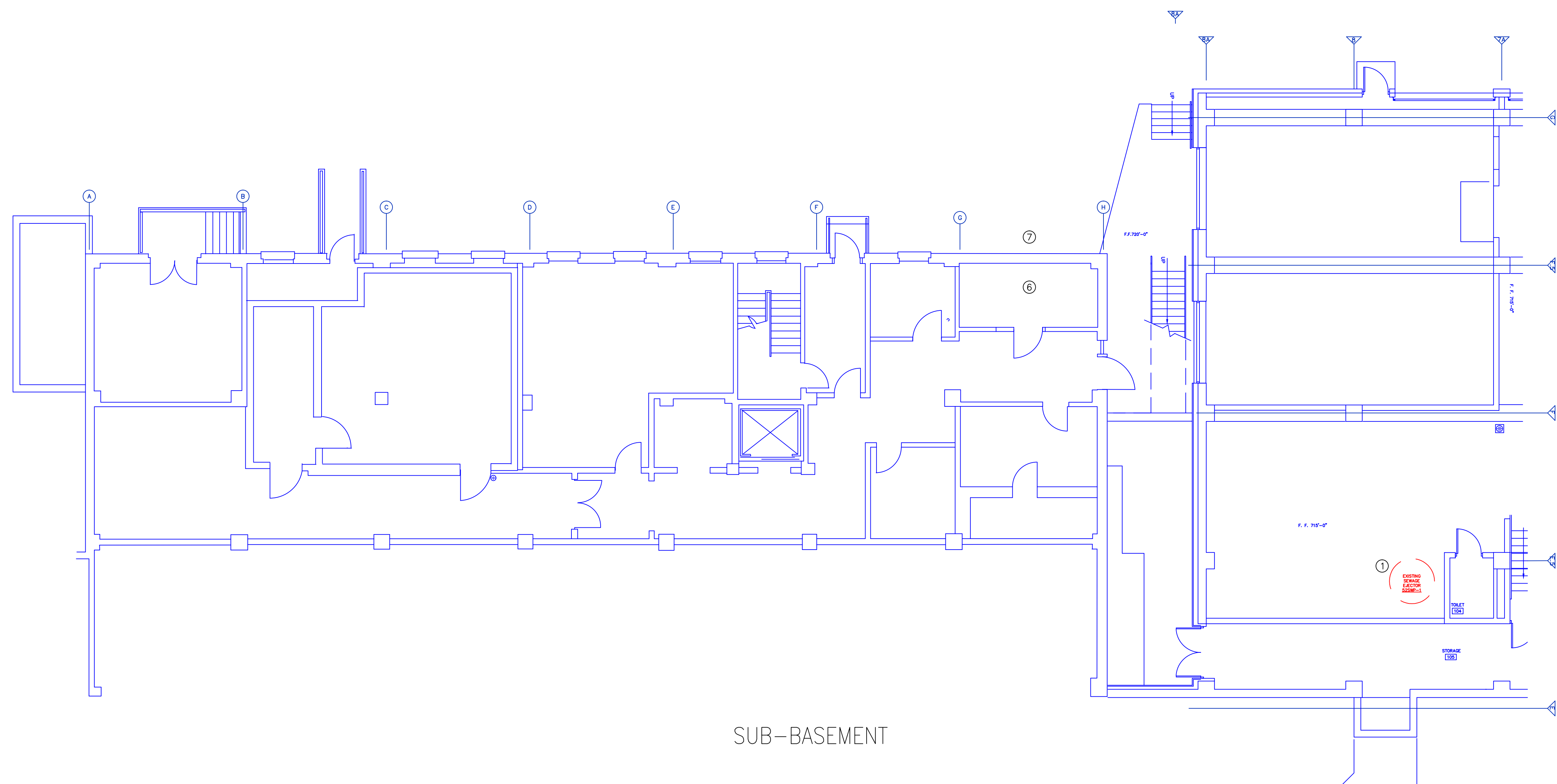
one eighth inch = one foot
one quarter inch = one foot
three eighths inch = one foot
one half inch = one foot
one inch = one foot
three quarters inch = one foot
one inch = one foot
one and one half inches = one foot
three inches = one foot



BASEMENT



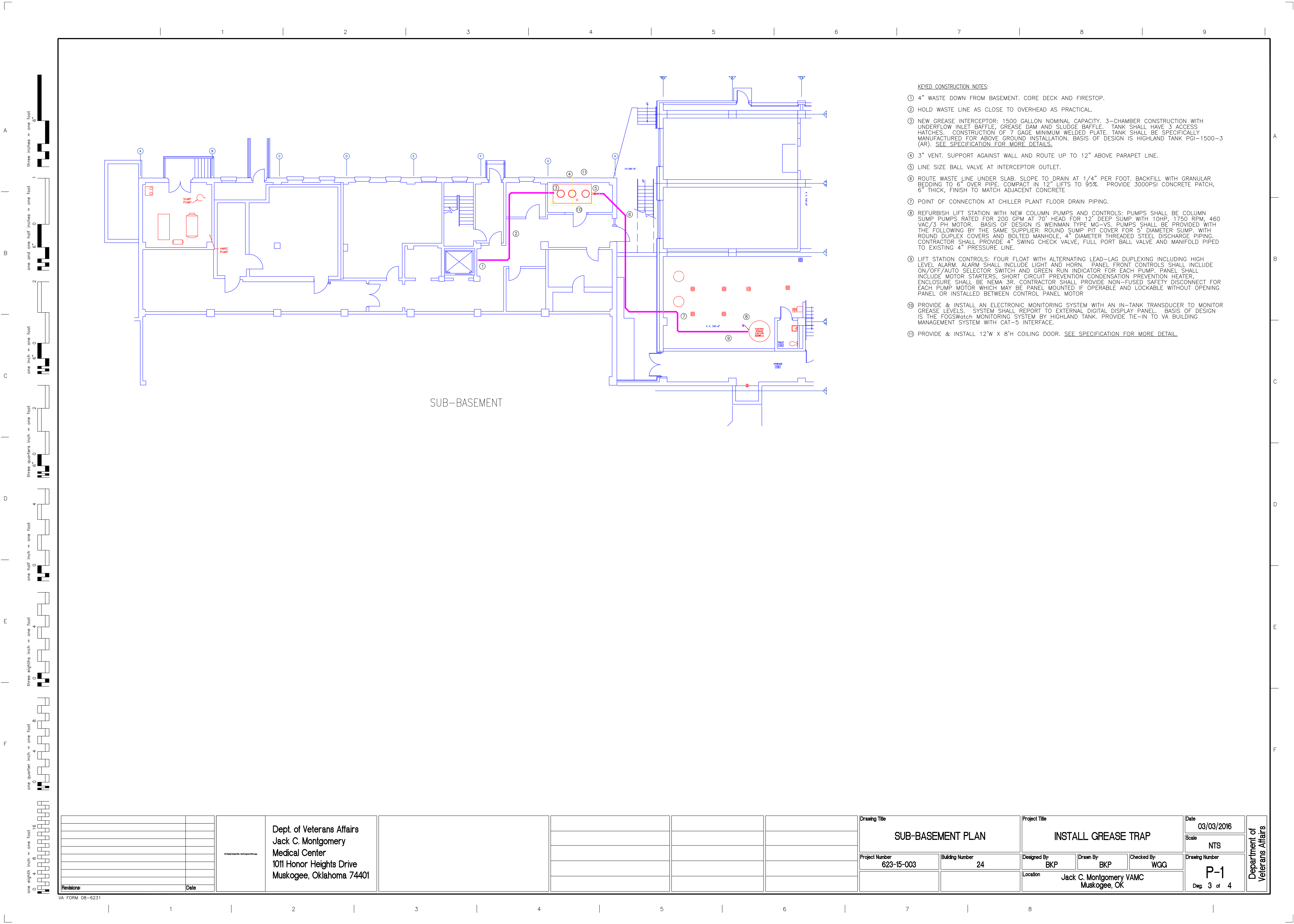
FIRST FLOOR



SUB-BASEMENT

- KEYED DEMOLITION NOTES:**
- ① DEMOLISH LIFT STATION PUMPS RAILS AND CONTROLS. PREPARE TANK AS NEEDED TO ACCEPT NEW COLUMN PUMPS AND COVER. CONTRACTOR SHALL PROVIDE TEMPORARY SUMP PUMP DISCHARGED TO EXISTING PRESSURE LINE. CONTRACTOR MAY PLUG INLET LINE WHILE WORKING IN SUMP BUT MUST OPEN LINE AND OPERATE TEMPORARY PUMP ALL OTHER TIMES.
 - ② RE-CONFIGURE WASTE PIPING TO FLOW WASTE TO NEW GREASE INTERCEPTOR. SEE DRAWING P-2 BASEMENT PLAN.
 - ③ DEMOLISH ABANDONED LINE RUNNING THROUGH WALL AT THIS POINT. CLEAN OUT WALL PENETRATION AND PREPARE IT FOR NEW 4" WASTE WHICH SHALL BE ROUTED THROUGH IT. ADJUST ELEVATION AS NECESSARY.
 - ④ REMOVE EXISTING GREASE TRAP AND DISCHARGE IN CEILING. CAP SANITARY T. PREPARE IN-FEED LINE TO ACCEPT NO HUB CONNECTION TO NEW WASTE LINE. WASTE LINE SHALL BE ROUTED PER DRAWING P-2 FIRST FLOOR PLAN. PATCH OPENING IN SECOND FLOOR SLAB AND FINISH TO MATCH EXISTING.
 - ⑤ REMOVE SHEETROCK TO PROVIDE ACCESS TO WASTE AND VENT LINES. REMOVE 3 INCH VENT THROUGH ROOF. PREPARE CONNECTIONS, SECOND FLOOR AND ROOF DECK PENETRATION FOR NEW 4" VTR.
 - ⑥ RELOCATE OVERHEAD RADIATOR, WALL RACKS, CONDUIT AND ELECTRICAL OUTLET. RELOCATE TWO OVERHEAD STEAM PIPES TO AREA ABOVE EXISTING ENTRANCE. CLEAN AREA THOROUGHLY.
 - ⑦ DEMOLISH OPENING IN EXTERIOR MASONRY WALL TO ACCOMMODATE INSTALLATION OF AN 12'(W) x 8'(H) COILING DOOR.
 - ⑧ INSTALL 4" LINE TO TIE INTO LINE IN BASEMENT. PROVIDE FLOOR PENETRATIONS AS NECESSARY TO MAKE CONNECTION.
- GENERAL CONSTRUCTION NOTES:**
- ④ WASTE LINES ARE AT OVERHEAD LEVELS IN SPACE SHOWN AND GENERALLY SERVE THE FLOOR ABOVE THAT IS NOT SHOWN.
 - ⑥ CONTRACTOR SHALL REFER TO SPECIFICATIONS FOR STANDARDS OF CONSTRUCTION QUALITY AND REFERENCE STANDARDS.
 - ③ PIPING LAYOUT INDICATES THE GENERAL ROUTING. NO ATTEMPT IS MADE TO SHOW ALL POSSIBLE NEEDED ADJUSTMENTS IN ELEVATION OR LOCATION. THE CONTRACTOR SHALL SATISFY HIMSELF AS TO ACTUAL CONDITIONS BEFORE BIDDING ON THE WORK.
 - ⑥ AREAS FOR STORAGE OF MATERIALS AND TOOLS IS EXTREMELY LIMITED ON SITE. THE CONTRACTOR SHOULD PLAN TO REMOVE TOOLS, WASTE AND EXTRA MATERIALS AT THE END OF EACH WORK SHIFT.
 - ⑥ CONTRACTOR SHALL TAKE STEPS NEEDED TO MINIMIZE LIFT STATION DOWN TIME. ALL WORK THAT CAN BE DONE BEFORE DEMOLISHING THE PUMPS AND CONTROLS SHALL BE IN PLACE AND TESTED.
 - ⑦ OPERATION OF THE CANTEN, CAFETERIA AND DIETETICS KITCHEN CANNOT BE INTERRUPTED FOR THIS PROJECT. CONTRACTOR SHALL COMPLETE LIFT STATION MODIFICATION AND ALL NEW WASTE AND VENT LINE INSTALLATION BEFORE DEMOLISHING EXISTING GREASE TRAP OR DISCONNECTING WASTE LINES.
 - ⑥ DEMOLITION AND REWORK OF CANTEN CAFETERIA WASTE LINE IN BASEMENT SHALL BE PERFORMED OVER A WEEKEND AND FULLY OPERATIONAL BEFORE 5:00AM THE FOLLOWING MONDAY.
 - ④ DEMOLITION OF GREASE TRAP AND INSTALLATION OF NEW WASTE LINE SERVING DIETETICS SHALL BE COMPLETED IN ONE SHIFT BETWEEN 8:00PM AND 4:00AM THE NEXT MORNING.
 - ① SEAL ALL WALL AND FLOOR PENETRATIONS WITH APPROVED 2 HOUR FIRESTOPPING.

Revisions		Date		Dept. of Veterans Affairs Jack C. Montgomery Medical Center 1011 Honor Heights Drive Muskogee, Oklahoma 74401								Drawing Title DEMOLITION PLAN		Project Title INSTALL GREASE TRAP		Date 03/03/2016		Department of Veterans Affairs			
												Project Number 623-15-003		Building Number 24		Scale NTS					
												Designed By BKP		Drawn By BKP		Checked By WGG				Drawing Number PD-1	
																Location Jack C. Montgomery VAMC Muskogee, OK				Dwg. 2 of 4	



		Dept. of Veterans Affairs Jack C. Montgomery Medical Center 1011 Honor Heights Drive Muskogee, Oklahoma 74401				Drawing Title		Project Title			Date	Department of Veterans Affairs
						SUB-BASEMENT PLAN		INSTALL GREASE TRAP			03/03/2016	
											Scale	
											NTS	
							Project Number	Building Number	Designed By:	Drawn By:	Checked By:	Drawing Number
							623-15-003	24	BKP	BKP	WGG	P-1
									Jack C. Montgomery VAMC Muskogee, OK			Dwg. 3 of 4
Revisions:	Date											

A

B

C

D

E

F

G

H

I

A

B

C

D

E

F

G

H

I

1

2

3

4

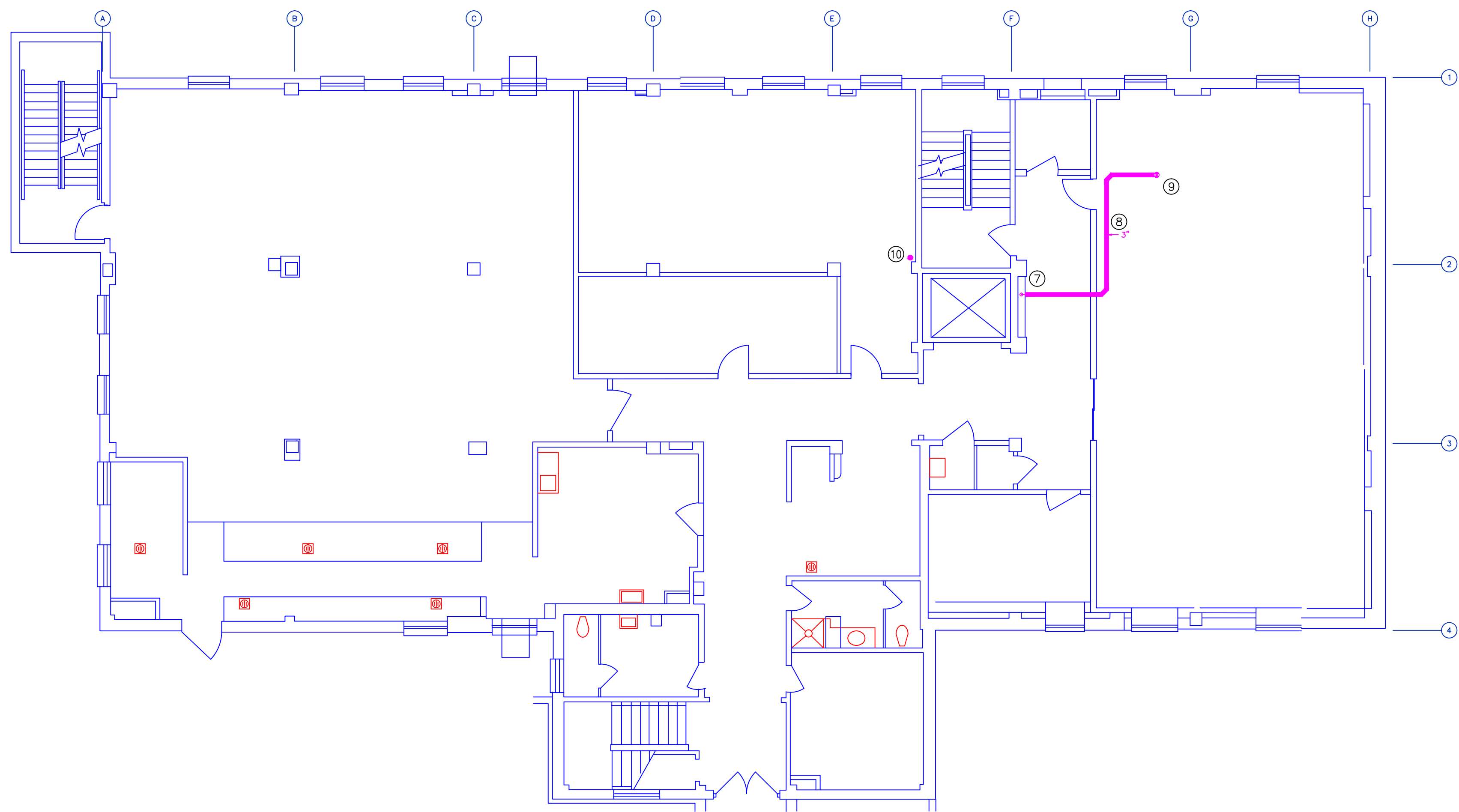
5

6

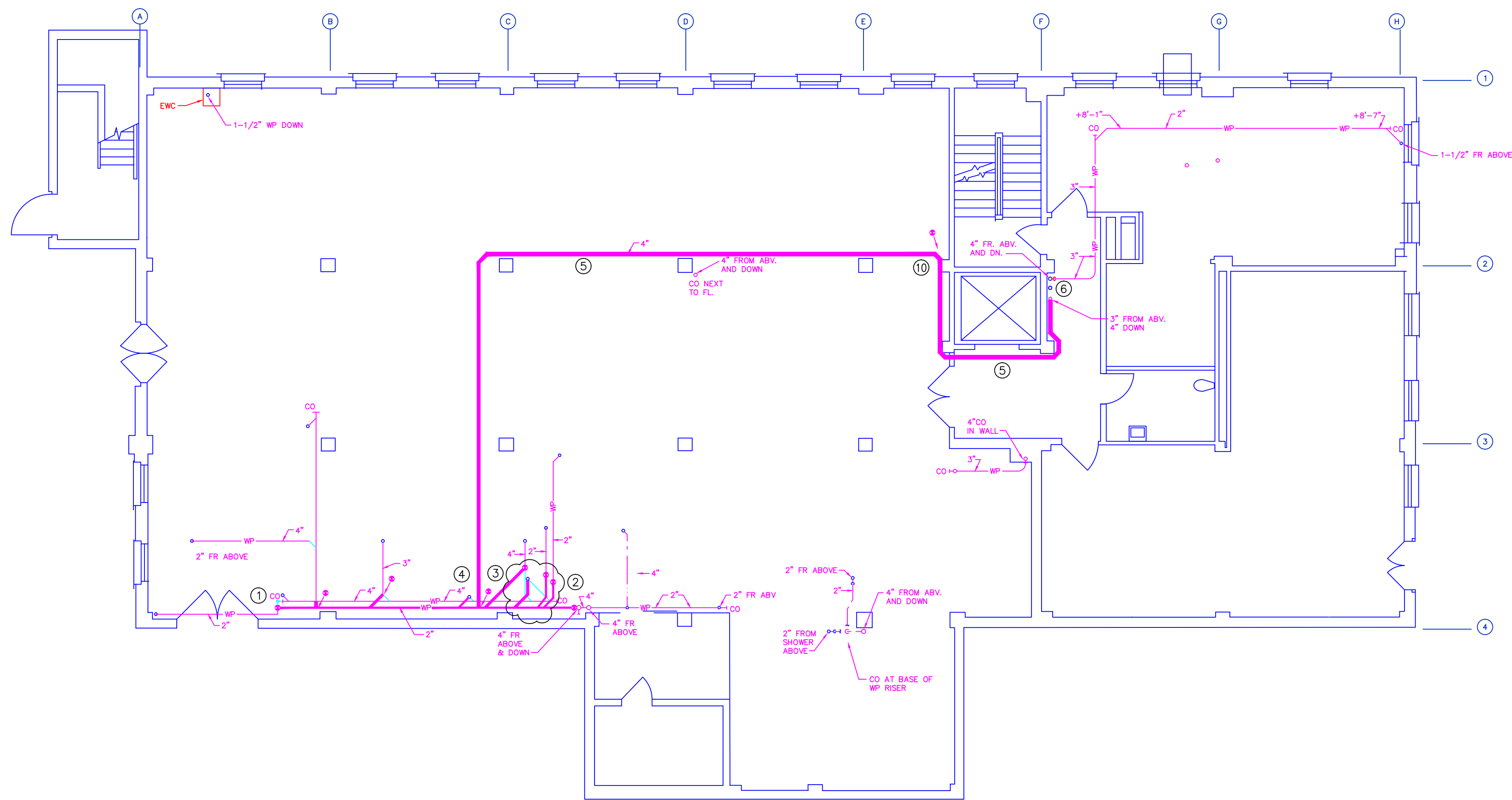
7

8

9



FIRST FLOOR



BASEMENT

KEYED CONSTRUCTION NOTES:

- POINT OF CONNECTION FOR NEW 2" WASTE LINE.
- NEW 2" INCH WASTE LINE TO THIS POINT. REWORK 4" WASTE RISER TO ACCOUNT FOR THIS CONNECTION. CAP ANY OPENINGS LEFT BY DEMOLITION AND REROUTING OF GREASE BEARING WASTES.
- REWORK GREASE BEARING WASTE LINES IN THIS AREA TO ROUTE AS SHOWN. PROVIDE NEW FITTINGS AND LINE AS NEEDED.
- POINT OF CONNECTION FOR NEW 4" WASTE LINE.
- CONTRACTOR SHALL ROUTE 4" WASTE LINE AS SHOWN WHILE KEEPING AS NEAR THE STRUCTURAL OVERHEAD AS PRACTICAL.
- TIE TO 3" GREASE BEARING WASTE LINE FROM FIRST FLOOR DIETETICS. 4" DROP TO SUB-BASEMENT.
- 3" DOWN TO BASEMENT. NEW 4" VENT THROUGH ROOF FROM THIS POINT. PATCH AND FINISH WALL TO MATCH EXISTING.
- 3" GREASE BEARING WASTE LINE LOCATED AS HIGH IN CEILING SPACE AS PRACTICAL, SLOPED 1/4" PER FOOT TO DISCHARGE.
- POINT OF CONNECTION TO EXISTING 3" GREASE BEARING WASTE LINE FROM DIETETICS.
- 4" WASTE LINE FROM ABOVE TO TIE INTO 4" BASEMENT LINE.

		Dept. of Veterans Affairs Jack C. Montgomery Medical Center 1011 Honor Heights Drive Muskogee, Oklahoma 74401								Drawing Title FIRST FLOOR AND BASEMENT PLAN		Project Title INSTALL GREASE TRAP		Date 03/03/2016		Department of Veterans Affairs		
										Project Number 623-15-003		Building Number 24		Designed By: BKP			Scale NTS	
														Drawn By: BKP			Drawing Number P-2	
														Checked By: WGG			Dwg. 4 of 4	
Revisions		Date												Location Jack C. Montgomery VAMC Muskogee, OK				

1

2

3

4

5

6

7

8

9