











SYMBOLS

SYMBOLS	DESCRIPTION	BACKBOX SIZE	BOX MOUNTING HEIGHT
	NURSE CALL MASTER STATION, MOUNTED ON NURSES' COUNTER TOP (UNLESS OTHERWISE NOTED)		DESK
	NURSE CALL TERMINAL CABINET: W/ MOUNTED WITHIN SIGNAL CLOSET.		
	NURSE CALL STATION - SINGLE PATIENT STATION		44" A.F.F.
	NURSE CALL STATION - DUAL PATIENT STATION		44" A.F.F.
	NURSE CALL STATION - DUTY STATION		44" A.F.F.
	NURSE CALL STATION - PATIENT TROLLEY		44" A.F.F.
	NURSE CALL STATION - SHOWER, WP STANDS FOR WATERPROOF FOR SHOWERING AND TUB LOCATIONS		60" A.F.F.
	NURSE CALL DOME LIGHT - CORRIDOR		4" ABOVE DOOR FRAME
	NURSE CALL DOME LIGHT - ZONE CORRIDOR		4" ABOVE DOOR FRAME
	EXISTING 1 BOX IN CEILING SPACE		
GENERAL NOTES:			
PROPOSED MOUNTING HEIGHTS ABOVE SHALL BE VERIFIED AND CONFIRMED WITH COR PRIOR TO INSTALLATION.			
THE MINIMUM CONDUIT SIZE ALLOWED IS 1-1/4" UNLESS OTHERWISE NOTED.			

GENERAL NOTES

1. THE CONTRACTOR IS RESPONSIBLE FOR ALL OF THE WORK DESCRIBED IN THESE CONTRACT DRAWINGS AND SPECIFICATIONS.
2. EXACT LOCATIONS, MOUNTING HEIGHT AND COLOR OF OUTLETS SHALL BE COORDINATED WITH THE OWNER.
3. THESE NURSE CALL DRAWINGS ARE TO BE USED IN CONJUNCTION WITH THE NURSE CALL SPECIFICATIONS. CONTRACTOR SHOULD AWARE OF ANY DISCREPANCIES BETWEEN THE DRAWINGS AND THE SPECIFICATIONS. CONTRACTOR SHALL BE RESPONSIBLE FOR REPORTING ANY DISCREPANCIES BETWEEN THE DRAWINGS AND THE SPECIFICATIONS TO THE ATTENTION OF THE OWNER.
4. THE CONTRACTOR SHALL BE RESPONSIBLE FOR REPORTING ANY DISCREPANCIES BETWEEN THE CONTRACT DRAWINGS AND ACTUAL FIELD CONDITIONS. ANY DISCREPANCIES ARE TO BE IMMEDIATELY REPORTED TO THE ATTENTION OF THE OWNER.
5. THE CONTRACTOR SHALL BE RESPONSIBLE FOR SURVEYING THE BUILDING AND LOCATING ALL BACKHOES, CONDUITS, STUB-UPS DESIGNATED FOR THE SEQUENCE OF WORK.
6. ALL CONDUITS AND SLEEVES DESIGNATED FOR LOW VOLTAGE OR NURSE CALL USE, WHETHER THEY ARE UTILIZED BY THE CONTRACTOR OR NOT, SHALL BE FIELD STOPPED.
7. THE CONTRACTOR SHALL BE RESPONSIBLE FOR COORDINATION WITH THE CORP. FURTHERMORE, THE CONTRACTOR SHALL COORDINATE THE SEQUENCE OF WORK WITH THE CORP.
8. BACKHOES, STUB-UPS, CONDUITS AND SLEEVES FOR PATHWAYS TOPFROM THE SIGNAL, ROOMS ARE PROVIDED BY CONTRACTOR.
9. THE ENTIRE CABLE PLANT SHALL BE SET OUTLINED AS THE CONTRACTOR DETERMINES HIS SPECIFICATIONS.
10. REFER TO THE CHART FOR ABBREVIATIONS AND ACRONYMS.
11. THE CONTRACTOR SHALL PROVIDE ALL CABLE, HARDWARE AND EQUIPMENT SHOWN ON THESE DRAWINGS EXCEPT WHERE OTHERWISE NOTED.
12. THE CONTRACT DRAWINGS OF ALL TRADES INCLUDING ELECTRICAL, ETC., SHOW ALL PARTS OF THE MESSAGE. THE CONTRACTOR MUST REVIEW THE DRAWINGS OF ALL OTHER TRADES AND OBTAIN PERTINENT INFORMATION THAT PERTAINS TO THE NURSE CALL WORK AND, IF NEEDED OR INDICATED BY THE DRAWINGS, THE NURSE DRAWINGS, AND THE NURSE CALL SPECIFICATIONS. THE CONTRACTOR IS TO COMPLY WITH THIS REQUIREMENT AFTER REVIEW OF ALL DOCUMENTS OF THE CONTRACTOR FEELS THAT THERE IS NOT IN HIS SCOPES OF WORK. THE CONTRACTOR SHALL BE RESPONSIBLE FOR SUBMISSION AND CLEARLY INDICATE THE SCOPE OF WORK FOR WHICH HE IS TAKING THE EXCEPTION.
13. THE CONTRACTOR MUST BE RESPONSIBLE FOR THE PROTECTION OF ALL EXISTING UTILITIES AND EQUIPMENT AND UPDATE HIS "AS BUILT" DRAWINGS AS AN ONGOING PROCESS.
14. ALL CABLES INSTALLED IN A PLENUM SPACE SHALL BE PLENUM RATED.
15. FOR ALL COPPER CABLES: RADIUS OF A CONDUIT BEND SHALL BE A MINIMUM OF 10X OD. FOR CONDUITS BIGGER THAN 1/2" FOR COPPER CABLES, THE MINIMUM RADIUS OF BEND SHALL BE 6X O.D.
16. USE PULL BOXES WHEREVER THE NUMBER OF BENDS IN A CONDUIT EXCEEDS 2 X 90 DEGREE IN A RUN OR CONDUIT RUN EXCEEDS 100 FT.
17. COORDINATE FACEPLATE AND DOME LIGHT LOCATIONS AND ELEVATIONS WITH AERIES DRAWINGS AND SPECIFICATIONS.
18. LOCATION OF CONTRACTOR STAGING AND STORAGE ON-SITE SHALL BE DETERMINED PRIOR TO START OF CONSTRUCTION BY LOCATION.

DEMOLITION NOTES

- [illegible]

ABBREVIATIONS

A	AMPERE
AF	ABOVE FINISHED FLOOR
AL	ALARM
AMW	ARMED WIRE CAGE
BAS	BUILDING AUTOMATION SYSTEM
BBL	BUILDING
C	CONDUIT
CAT	CATEGORY
CL	CLOSET
CON	CONTRACTOR
COR	CONSTRUCTION OFFICER REPRESENTATIVE
COTR	CONSTRUCTION OFFICER TECHNOLOGY REPRESENTATIVE
CR	CROWN
DN	DOWN
DNW	DRAWING
E	EXISTING
EA	ENTRY
EF	ENTRANCE FACILITY
ED	EQUIPMENT INTERMEDIATE DISTRIBUTION FRAME
ELIC	ELECTRICAL
EQUIP	EQUIPMENT
EX	EXISTING RELOCATED
EXR	EXISTING TO REMAIN
FA	FIRE ALARM
FAB	FIRE ALARM SYSTEM
FBO	FURNISHED BY OTHERS
FL	FLOOR
FT	FEET OR FOOT
G	GROUND
HC	HANG OR SUSPENDED CEILING
HCC	HORIZONTAL CONNECTION CABINET
HCD	HORIZONTAL CONNECTION PANEL
HZ	HERTZ
IB	IBONES
J	JUNCTION BOX
MAK	MANHOLE
MECH	MECHANICAL
ME	MECHANICAL EQUIPMENT ROOM
MM	MINOR
MTD	MAINTENANCE
N-L	NOT IN CONTACT
NTB	NOT TO SCALE
OC	ON CENTER
OD	OUTSIDE DIAMETER
PB	PULL BOX
PWR	POWER
R	REQUIRED TO BE REMOVED
REX	RELOCATE EXISTING
RECEPT	RECEIPTFACE
REQ	REQUIRED
RS	ROUGH GALVANIZED STEEL
SG	SINGLE-ANGLE FIBER
SPEC	SPECIFICATION
TIC	TO BE DETERMINED
TEL	TELEPHONE
TE	TELECOMMUNICATIONS EQUIPMENT ROOM
TEL	TELECOMMUNICATIONS ROOM
TSB	TRANSIENT VOLTAGE SURGE SUPPRESSION
U	UNUSUAL
UP	UNDER OVERHEAD NOTED
U-O-N	UNUSUAL
V	VOLT OR VOLTAGE
VP	VOLTEMPERATURE
W	WALL
WP	WEATHERPROOF

SHEET INDEX

SHEET NO.	SHEET TITLE	SHEET SCALE
T-600	TECHNOLOGY COVER SHEET	N.T.S.
T-10-01	TECHNOLOGY FIRST PARTIAL DEMO PLAN - AREA A	1" = 8'-0"
T-10-01A	TECHNOLOGY FIRST PARTIAL DEMO PLAN - AREA A	1" = 8'-0"
T-10-02	TECHNOLOGY SECOND PARTIAL DEMO PLAN - AREA B	1" = 8'-0"
T-10-02A	TECHNOLOGY SECOND PARTIAL DEMO PLAN - AREA B	1" = 8'-0"
T-10-03	TECHNOLOGY THIRD PARTIAL DEMO PLAN - AREA C	1" = 8'-0"
T-10-03A	TECHNOLOGY THIRD PARTIAL DEMO PLAN - AREA C	1" = 8'-0"
T-10-04	TECHNOLOGY FOURTH PARTIAL DEMO PLAN - AREA D	1" = 8'-0"
T-10-04A	TECHNOLOGY FOURTH PARTIAL DEMO PLAN - AREA D	1" = 8'-0"
T-10-05	TECHNOLOGY FIFTH PARTIAL DEMO PLAN - AREA E	1" = 8'-0"
T-10-05A	TECHNOLOGY FIFTH PARTIAL DEMO PLAN - AREA E	1" = 8'-0"
T-10-06	TECHNOLOGY SIXTH PARTIAL DEMO PLAN - AREA F	1" = 8'-0"
T-10-06A	TECHNOLOGY SIXTH PARTIAL DEMO PLAN - AREA F	1" = 8'-0"
T-10-07	TECHNOLOGY SEVENTH PARTIAL DEMO PLAN - AREA G	1" = 8'-0"
T-10-07A	TECHNOLOGY SEVENTH PARTIAL DEMO PLAN - AREA G	1" = 8'-0"
T-10-08	TECHNOLOGY EIGHTH PARTIAL DEMO PLAN - AREA H	1" = 8'-0"
T-10-08A	TECHNOLOGY EIGHTH PARTIAL DEMO PLAN - AREA H	1" = 8'-0"
T-10-09	TECHNOLOGY NINTH PARTIAL DEMO PLAN - AREA I	1" = 8'-0"
T-10-09A	TECHNOLOGY NINTH PARTIAL DEMO PLAN - AREA I	1" = 8'-0"
T-10-10	TECHNOLOGY TENTH PARTIAL DEMO PLAN - AREA J	1" = 8'-0"
T-10-10A	TECHNOLOGY TENTH PARTIAL DEMO PLAN - AREA J	1" = 8'-0"
T-10-11	TECHNOLOGY ELEVENTH PARTIAL DEMO PLAN - AREA K	1" = 8'-0"
T-10-11A	TECHNOLOGY ELEVENTH PARTIAL DEMO PLAN - AREA K	1" = 8'-0"
T-10-12	TECHNOLOGY TWELFTH PARTIAL DEMO PLAN - AREA L	1" = 8'-0"
T-10-12A	TECHNOLOGY TWELFTH PARTIAL DEMO PLAN - AREA L	1" = 8'-0"
T-10-13	TECHNOLOGY THIRTEENTH PARTIAL DEMO PLAN - AREA M	1" = 8'-0"
T-10-13A	TECHNOLOGY THIRTEENTH PARTIAL DEMO PLAN - AREA M	1" = 8'-0"
T-10-14	TECHNOLOGY FOURTEENTH PARTIAL DEMO PLAN - AREA N	1" = 8'-0"
T-10-14A	TECHNOLOGY FOURTEENTH PARTIAL DEMO PLAN - AREA N	1" = 8'-0"
T-10-15	TECHNOLOGY FIFTEENTH PARTIAL DEMO PLAN - AREA O	1" = 8'-0"
T-10-15A	TECHNOLOGY FIFTEENTH PARTIAL DEMO PLAN - AREA O	1" = 8'-0"
T-10-16	TECHNOLOGY SIXTEENTH PARTIAL DEMO PLAN - AREA P	1" = 8'-0"
T-10-16A	TECHNOLOGY SIXTEENTH PARTIAL DEMO PLAN - AREA P	1" = 8'-0"
T-10-17	TECHNOLOGY SEVENTEENTH PARTIAL DEMO PLAN - AREA Q	1" = 8'-0"
T-10-17A	TECHNOLOGY SEVENTEENTH PARTIAL DEMO PLAN - AREA Q	1" = 8'-0"
T-10-18	TECHNOLOGY EIGHTEENTH PARTIAL DEMO PLAN - AREA R	1" = 8'-0"
T-10-18A	TECHNOLOGY EIGHTEENTH PARTIAL DEMO PLAN - AREA R	1" = 8'-0"
T-10-19	TECHNOLOGY NINETEENTH PARTIAL DEMO PLAN - AREA S	1" = 8'-0"
T-10-19A	TECHNOLOGY NINETEENTH PARTIAL DEMO PLAN - AREA S	1" = 8'-0"
T-10-20	TECHNOLOGY TWENTIETH PARTIAL DEMO PLAN - AREA T	1" = 8'-0"
T-10-20A	TECHNOLOGY TWENTIETH PARTIAL DEMO PLAN - AREA T	1" = 8'-0"
T-10-21	TECHNOLOGY FIRST FLOOR OVERALL PLAN - AREA A	1" = 2'-0"
T-10-21A	TECHNOLOGY FIRST FLOOR OVERALL PLAN - AREA A	1" = 2'-0"
T-10-22	TECHNOLOGY SECOND FLOOR OVERALL PLAN - AREA B	1" = 2'-0"
T-10-22A	TECHNOLOGY SECOND FLOOR OVERALL PLAN - AREA B	1" = 2'-0"
T-10-23	TECHNOLOGY THIRD FLOOR OVERALL PLAN - AREA C	1" = 2'-0"
T-10-23A	TECHNOLOGY THIRD FLOOR OVERALL PLAN - AREA C	1" = 2'-0"
T-10-24	TECHNOLOGY FOURTH FLOOR OVERALL PLAN - AREA D	1" = 2'-0"
T-10-24A	TECHNOLOGY FOURTH FLOOR OVERALL PLAN - AREA D	1" = 2'-0"
T-10-25	TECHNOLOGY FIFTH FLOOR OVERALL PLAN - AREA E	1" = 2'-0"
T-10-25A	TECHNOLOGY FIFTH FLOOR OVERALL PLAN - AREA E	1" = 2'-0"
T-10-26	TECHNOLOGY SIXTH FLOOR OVERALL PLAN - AREA F	1" = 2'-0"
T-10-26A	TECHNOLOGY SIXTH FLOOR OVERALL PLAN - AREA F	1" = 2'-0"
T-10-27	TECHNOLOGY SEVENTH FLOOR OVERALL PLAN - AREA G	1" = 2'-0"
T-10-27A	TECHNOLOGY SEVENTH FLOOR OVERALL PLAN - AREA G	1" = 2'-0"
T-10-28	TECHNOLOGY EIGHTH FLOOR OVERALL PLAN - AREA H	1" = 2'-0"
T-10-28A	TECHNOLOGY EIGHTH FLOOR OVERALL PLAN - AREA H	1" = 2'-0"
T-10-29	TECHNOLOGY NINTH FLOOR OVERALL PLAN - AREA I	1" = 2'-0"
T-10-29A	TECHNOLOGY NINTH FLOOR OVERALL PLAN - AREA I	1" = 2'-0"
T-10-30	TECHNOLOGY TENTH FLOOR OVERALL PLAN - AREA J	1" = 2'-0"
T-10-30A	TECHNOLOGY TENTH FLOOR OVERALL PLAN - AREA J	1" = 2'-0"
T-10-31	TECHNOLOGY ELEVENTH FLOOR OVERALL PLAN - AREA K	1" = 2'-0"
T-10-31A	TECHNOLOGY ELEVENTH FLOOR OVERALL PLAN - AREA K	1" = 2'-0"
T-10-32	TECHNOLOGY TWELFTH FLOOR OVERALL PLAN - AREA L	1" = 2'-0"
T-10-32A	TECHNOLOGY TWELFTH FLOOR OVERALL PLAN - AREA L	1" = 2'-0"
T-10-33	TECHNOLOGY THIRTEENTH FLOOR OVERALL PLAN - AREA M	1" = 2'-0"
T-10-33A	TECHNOLOGY THIRTEENTH FLOOR OVERALL PLAN - AREA M	1" = 2'-0"
T-10-34	TECHNOLOGY FOURTEENTH FLOOR OVERALL PLAN - AREA N	1" = 2'-0"
T-10-34A	TECHNOLOGY FOURTEENTH FLOOR OVERALL PLAN - AREA N	1" = 2'-0"
T-10-35	TECHNOLOGY FIFTEENTH FLOOR OVERALL PLAN - AREA O	1" = 2'-0"
T-10-35A	TECHNOLOGY FIFTEENTH FLOOR OVERALL PLAN - AREA O	1" = 2'-0"
T-10-36	TECHNOLOGY SIXTEENTH FLOOR OVERALL PLAN - AREA P	1" = 2'-0"
T-10-36A	TECHNOLOGY SIXTEENTH FLOOR OVERALL PLAN - AREA P	1" = 2'-0"
T-10-37	TECHNOLOGY SEVENTEENTH FLOOR OVERALL PLAN - AREA Q	1" = 2'-0"
T-10-37A	TECHNOLOGY SEVENTEENTH FLOOR OVERALL PLAN - AREA Q	1" = 2'-0"
T-10-38	TECHNOLOGY EIGHTEENTH FLOOR OVERALL PLAN - AREA R	1" = 2'-0"
T-10-38A	TECHNOLOGY EIGHTEENTH FLOOR OVERALL PLAN - AREA R	1" = 2'-0"
T-10-39	TECHNOLOGY NINETEENTH FLOOR OVERALL PLAN - AREA S	1" = 2'-0"
T-10-39A	TECHNOLOGY NINETEENTH FLOOR OVERALL PLAN - AREA S	1" = 2'-0"
T-10-40	TECHNOLOGY TWENTIETH FLOOR OVERALL PLAN - AREA T	1" = 2'-0"
T-10-40A	TECHNOLOGY TWENTIETH FLOOR OVERALL PLAN - AREA T	1" = 2'-0"
T-10-41	TECHNOLOGY FIRST FLOOR PARTIAL PLAN - AREA A	1" = 8'-0"

TENANT IMPROVEMENT SCOPE OF WORK

1. THESE DRAWINGS & THEIR RELATED SPECIFICATION SECTIONS DEPICT ALL DEVICES, THEIR LOCATIONS AND LOW VOLTAGE ROUTING NECESSARY TO OVERSEE AND MAINTAIN STAFF-PATIENT COMMUNICATIONS.
2. THE ITEMS DEPICTED THAT ARE A PART OF THIS SCOPE OF WORK INCLUDE NURSE CALL MASTER UNITS, CALL STATIONS, PULL STATIONS, CODE BLUE UNITS, DOME LIGHTS ANNUNCIATORS AND OTHER MISCELLANEOUS ITEMS NECESSARY TO PROVIDE A COMPLETE NURSE CALL COMMUNICATIONS SYSTEM.
3. NURSE CALL/CODE BLUE DOES NOT INTERFACE WITH OTHER BUILDING MANAGEMENT SYSTEMS.
4. ALL REMOVED DEVICES AND EQUIPMENT SHALL BE RETURNED TO THE COR FOR DISPOSAL UNLESS OTHERWISE DIRECTED.

[illegible]

CONSULTANTS:



Syska Hennessy Group, Inc.
425 California Street
Suite 700
San Francisco, CA 94104
Tel: 415.288.9060
Fax: 415.835.0385
www.syska.com

ARCHITECT/ENGINEERS:



ENGINEERS ARCHITECTS
ONE KAISER PLAZA SUITE 445
OAKLAND CALIFORNIA 94612
TEL 510.271.6701 FAX 510.271.6707

Drawing Title	TECHNOLOGY COVER SHEET
	Approved: Project Director
	VAPAHCS PLANNING AND ENGINEERING

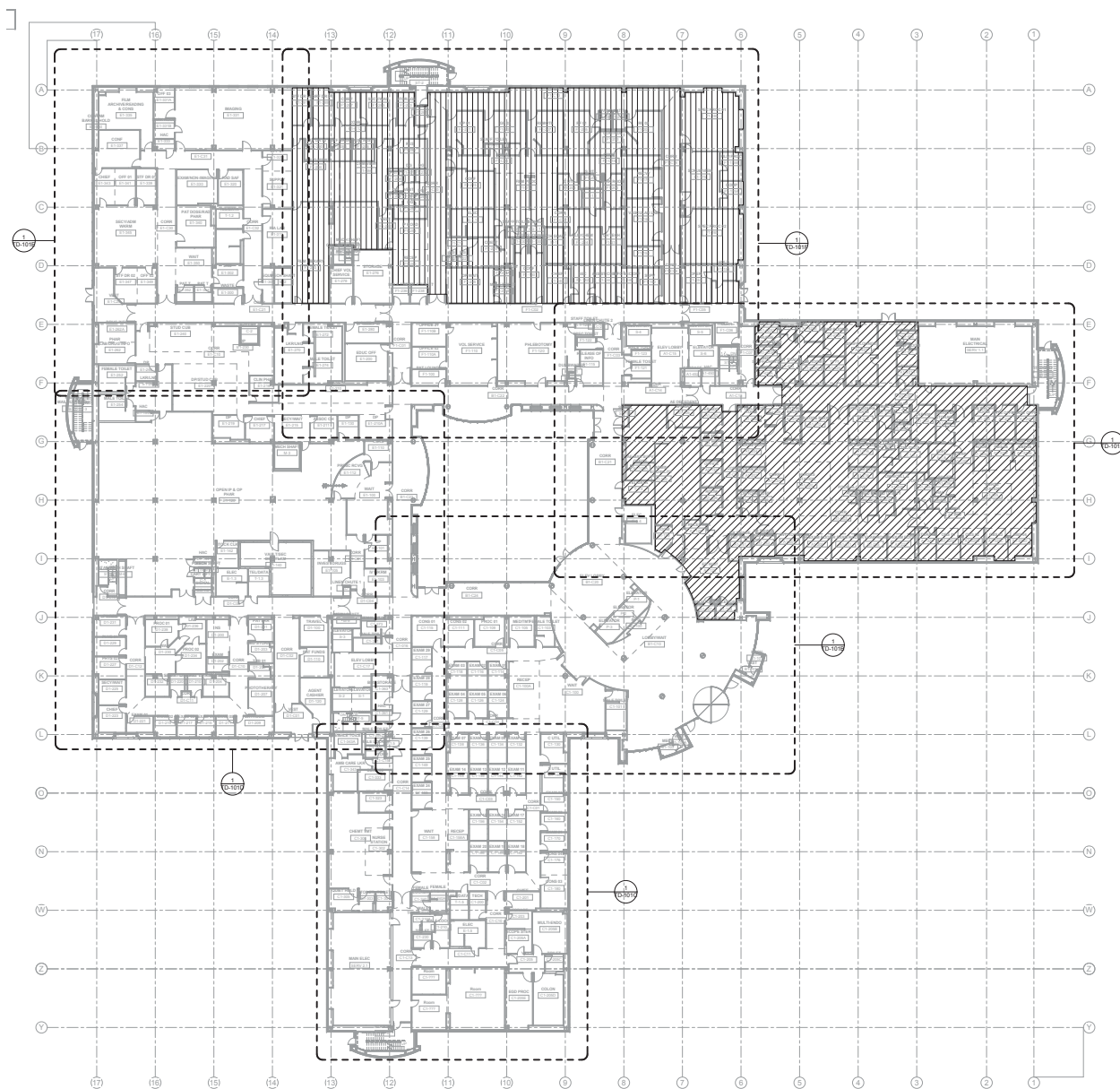
Project Title		
BUILDING 100 - UPGRADE NURSE CALL SYSTEM		
Location		
VAPAHCS - PALO ALTO CAMPUS 3801 MIRANDA AVE. PALO ALTO, CA 94304		
Date	Checked	Drawn
Mar. 4, 2015	HC	CC

Project Number	640-14-117
Building Number	100
Drawing Number	T-000
Dwg. -- of --	

FULLY SPRINKLERED

Office of
Construction and
Facilities
Management





DEMOLITION NOTES:

1. PROVIDE WIRELESS SYSTEM TO AUGMENT EXISTING NURSE CALL SYSTEM DURING CONSTRUCTION.
2. REMOVE CABLING BACK TO SOURCE.
3. COORDINATE WITH C.O.R. AND VA PALO ALTO FACILITIES BIOMED.
4. CONDUIT AND BACKBOXES ARE TO REMAIN IN PLACE.

SHEET NOTES:

① FIRST FLOOR TECHNOLOGY DEMO PLAN
1" = 20'-0"

CONSULTANTS:



Syska Hennessey Group, Inc.
425 California Street
Suite 700
San Francisco, CA 94104
Tel: 415.288.9060
Fax: 415.835.0385
www.syska.com



ARCHITECT/ENGINEERS:



ENGINEERS ARCHITECTS
ONE KAISER PLAZA SUITE 445
OAKLAND CALIFORNIA 94612
TEL 510.271.6701 FAX 510.271.6707
CITHEKPA GROUP 2013

Drawing Title
**TECHNOLOGY FIRST
OVERALL DEMO PLAN**

Approved: Project Director

VAPAHCS PLANNING
AND ENGINEERING

Project Title
**BUILDING 100 - UPGRADE
NURSE CALL SYSTEM**

Location	VAPAHCS - PALO ALTO CAMPUS 3801 MIRANDA AVE PALO ALTO, CA 94304
----------	--

Date
Mar. 4, 2015

Check	HC
-------	----

Drawn	CC
-------	----

Project Number	640-14-117
Building Number	100

Drawing Number	TD-10
----------------	--------------

Page 10 of 10

FULLY SPRINKLERED


Office of
Construction and
Facilities
Management

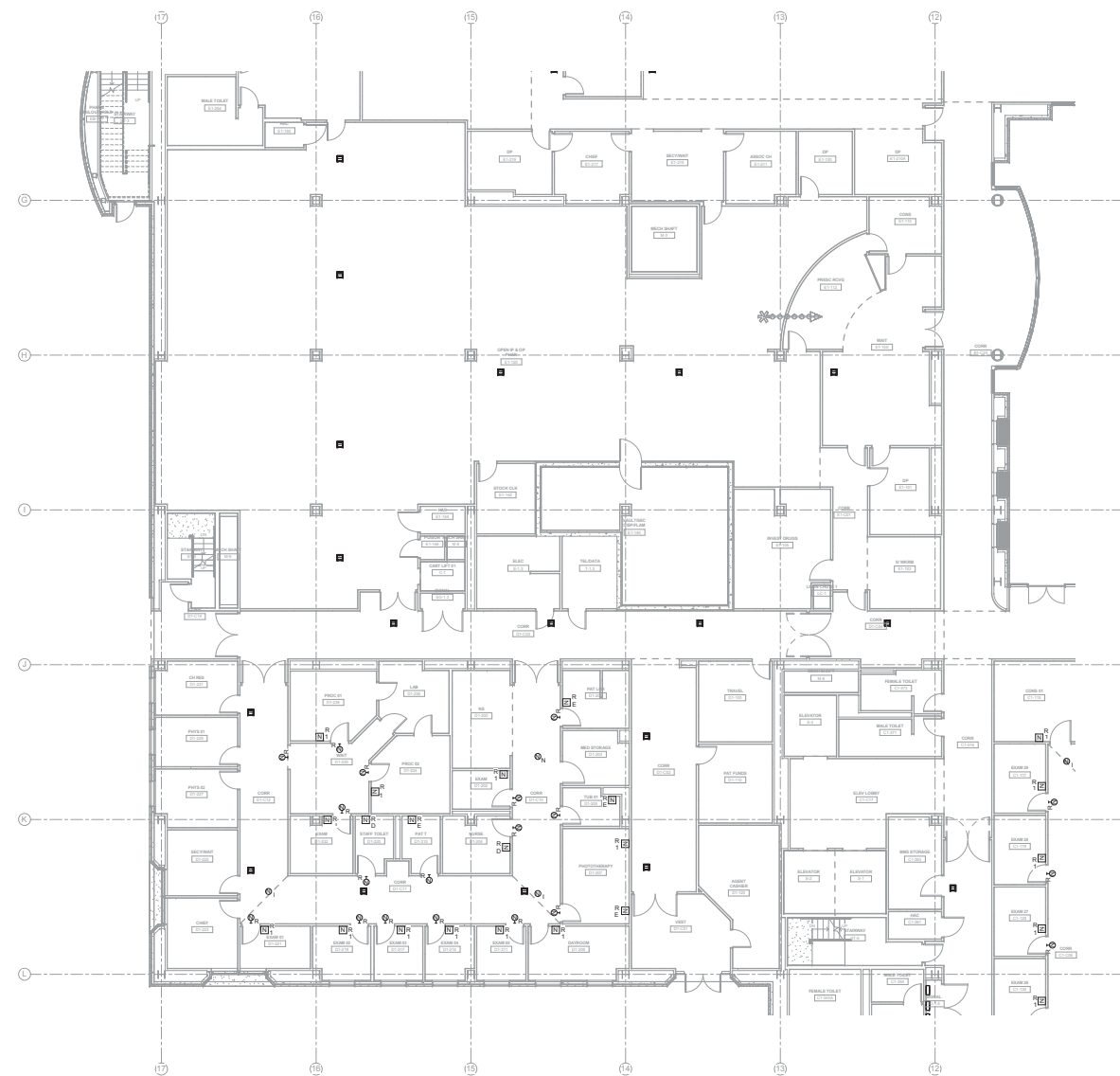




1. PROVIDE WIRELESS SYSTEM TO AUGMENT EXISTING NURSE CALL SYSTEM DURING CONSTRUCTION.
2. REMOVE CABLING BACK TO SOURCE.
3. COORDINATE WITH C.O.R. AND VA PALO ALTO FACILITIES BIOMED.
4. CONDUIT AND BACKBOXES ARE TO REMAIN IN PLACE.

SHEET NOTES:


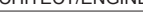

		CONSULTANTS:				ARCHITECT/ENGINEERS:		Drawing Title TECHNOLOGY FIRST PARTIAL DEMO PLAN - AREA C		Project Title BUILDING 100 - UPGRADE NURSE CALL SYSTEM		Project Number 640-14-117		Office of Construction and Facilities Management	
		 SYSKA HENNESSY <small>CHARTERED</small> A member company of SH Group, Inc.		Syska Hennessy Group, Inc. 425 California Street Suite 700 San Francisco, CA 94104 Tel: 415.388.9900 Fax: 415.635.0500 www.syska.com		 ENGINEERS ARCHITECTS ONE KAISER PLAZA SUITE 445 OAKLAND CALIFORNIA 94612 TEL 510.271.6701 FAX 510.271.6707 THE KPA GROUP		Approved: Project Director VAPAHCS PLANNING AND ENGINEERING		Location VAPAHCS - PALO ALTO CAMPUS 3801 MISANO AVE. PALO ALTO, CA 94304		Building Number 100			
Revisions:		Date		Dwg. - of -											

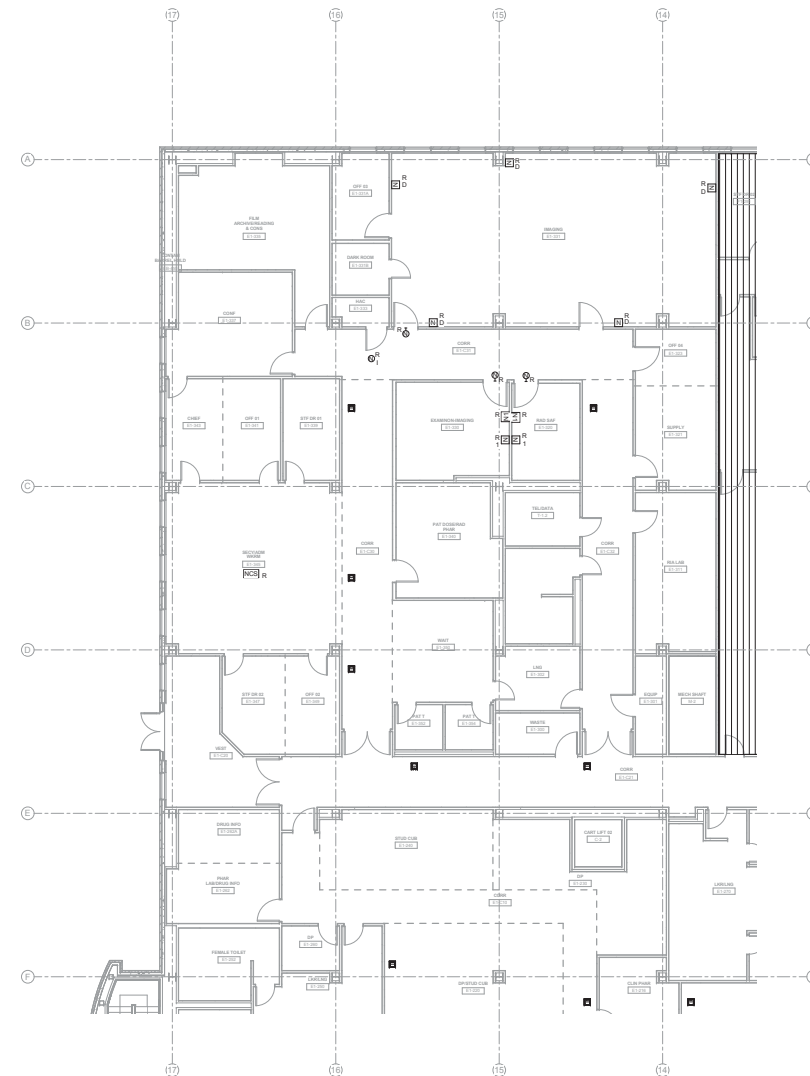


- DEMOLITION NOTES:

1. PROVIDE WIRELESS SYSTEM TO AUGMENT EXISTING NURSE CALL SYSTEM DURING CONSTRUCTION.
2. REMOVE CABLING BACK TO SOURCE.
3. COORDINATE WITH C.O.R. AND VA PALO ALTO FACILITIES BIOMED.
4. CONDUIT AND BACKBOXES ARE TO REMAIN IN PLACE.

SHEET NOTES:

		CONSULTANTS:		ARCHITECT/ENGINEERS:		Drawing Title TECHNOLOGY FIRST PARTIAL DEMO PLAN - AREA D		Project Title BUILDING 100 - UPGRADE NURSE CALL SYSTEM		Project Number 640-14-117		Office of Construction and Facilities Management	
		 SYSKA HENNESSY GROUP A member company of GH Group, Inc.		 KPA THE KPA GROUP ENGINEERS ARCHITECTS ONE KAISER PLAZA SUITE 445 OAKLAND CALIFORNIA 94612 TEL 510.271.6701 FAX 510.271.6707 C:\Users\KPA\Documents\640-14-117\640-14-117.dwg		Approved: Project Director VAPAHCS PLANNING AND ENGINEERING		Location VAPAHCS - PALO ALTO CAMPUS 3801 MIRANDA AVE. PALO ALTO, CA 94304		Drawing Number TD-101D			
Revisions:		Date						Date Mar. 4, 2015		Checked HC		Drawn CC	
										Dwg. - of -			



DEMOLITION NOTES:

SHEET NOTES:

① FIRST FLOOR DEMO PLAN AREA E
1/8" = 1'-0"

		CONSULTANTS:				ARCHITECT/ENGINEERS:		Drawing Title TECHNOLOGY FIRST PARTIAL DEMO PLAN - AREA E		Project Number 640-14-117		Project Title BUILDING 100 - UPGRADE NURSE CALL SYSTEM		Office of Construction and Facilities Management			
		 SYSKA HENNESSY <small>an member company of SH Group, Inc.</small>		Syska Hennessy Group, Inc. 425 California Street Suite 700 San Francisco, CA 94104 Tel: 415.268.6900 Fax: 415.268.6901 www.syska.com		 ENGINEERS ARCHITECTS ONE KAISER PLAZA SUITE 445 OAKLAND CALIFORNIA 94612 Tel: 510.271.6701 Fax: 510.271.6707 THE KPA GROUP		Approved: Project Director VAPAHCS PLANNING AND ENGINEERING		Building Number 100		Location VAPAHCS - PALO ALTO CAMPUS 3801 MERCADERE AVE. PALO ALTO, CA 94304		Drawing Number TD-101E			
Revisions:		Date								Date Mar. 4, 2015		Checked HC		Drawn CC			


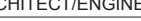



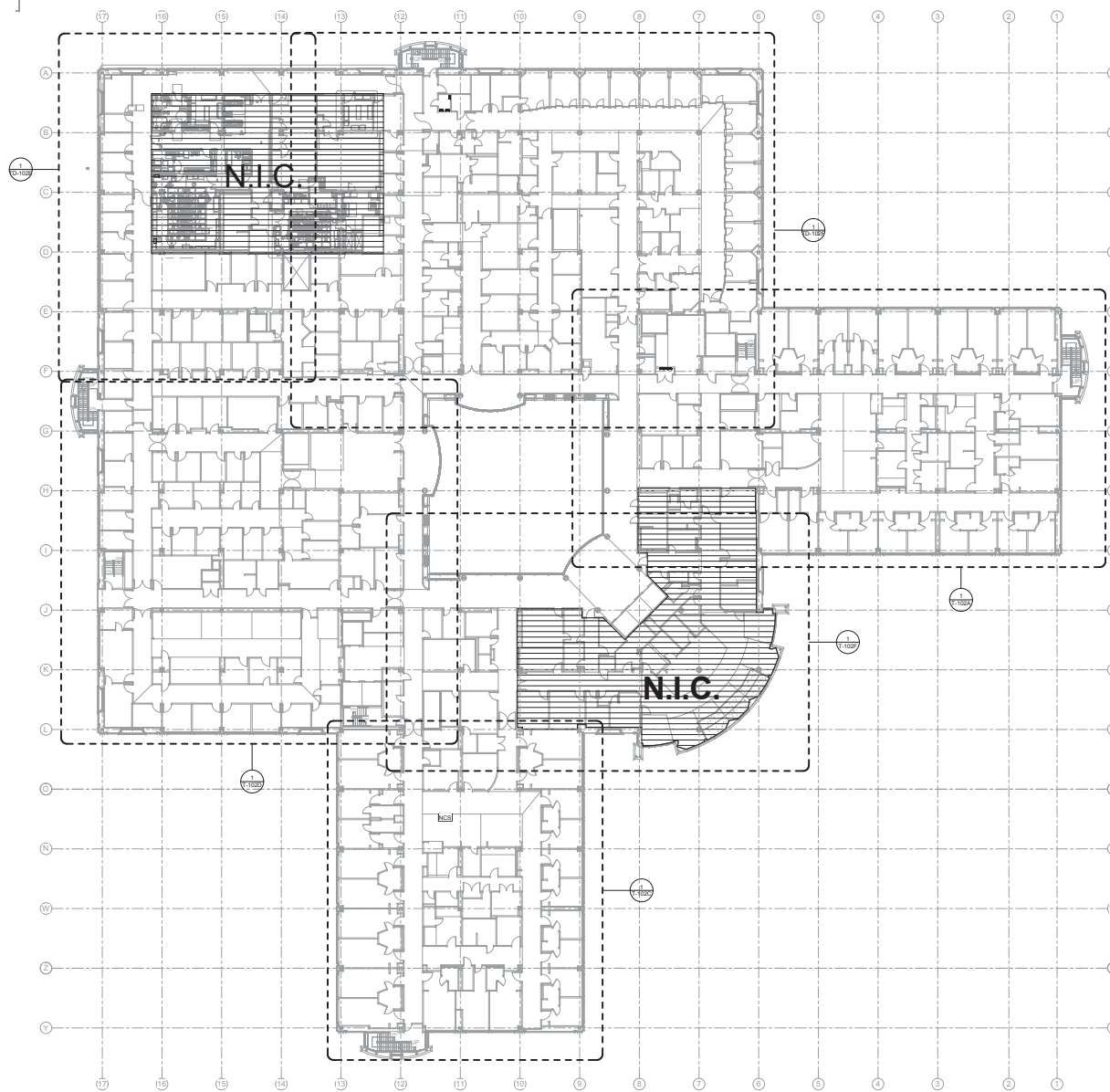
DEMOLITION NOTES:

1. PROVIDE WIRELESS SYSTEM TO AUGMENT EXISTING NURSE CALL SYSTEM DURING CONSTRUCTION.
2. REMOVE CABLING BACK TO SOURCE.
3. COORDINATE WITH C.O.R. AND VA PALO ALTO FACILITIES BIOMED.
4. CONDUIT AND BACKBOXES ARE TO REMAIN IN PLACE.

SHEET NOTES:

① FIRST FLOOR DEMO PLAN AREA F
1/8" = 1'-0"

		CONSULTANTS:		ARCHITECT/ENGINEERS:		Drawing Title TECHNOLOGY FIRST PARTIAL DEMO PLAN - AREA F		Project Title BUILDING 100 - UPGRADE NURSE CALL SYSTEM		Project Number 640-14-117		Office of Construction and Facilities Management
		 <p>Syska Hennessy Group, Inc. 425 California Street Suite 700 San Francisco, CA 94104 Tel: 415.288.0000 Fax: 415.288.0000 www.syska.com</p>		 <p>ENGINEERS ARCHITECTS ONE KAISER PLAZA SUITE 445 OAKLAND CALIFORNIA 94612 TEL 510.271.6701 FAX 510.271.6707 THE KPA GROUP</p>		Approved: Project Director VAPAHCS PLANNING AND ENGINEERING		Location VAPAHCS - PALO ALTO CAMPUS 3801 MIRANDA AVE., PALO ALTO, CA 94304		Drawing Number TD-101F		
Revisions:		Date						Date Mar. 4, 2015		Checked HC		
										Drawn CC		



DEMOLITION NOTES:

1. PROVIDE WIRELESS SYSTEM TO AUGMENT EXISTING NURSE CALL SYSTEM DURING CONSTRUCTION.
2. REMOVE CABLING BACK TO SOURCE.
3. COORDINATE WITH C.O.R. AND VA PALO ALTO FACILITIES BIOMED.
4. CONDUIT AND BACKBOXES ARE TO REMAIN IN PLACE.

SHEET NOTES:

SECOND FLOOR TECHNOLOGY DEMO
PLAN
1" = 20'-0"

CONSULTANTS:



Syska Hennessy Group, Inc.
425 California Street
Suite 700
San Francisco, CA 94104
Tel: 415.288.9060
Fax: 415.835.0385
www.syska.com



ARCHITECT/ENGINEERS:



ENGINEERS ARCHITECTS
ONE KAISER PLAZA SUITE 445
OAKLAND CALIFORNIA 94612
TEL 510.271.6701 FAX 510.271.6707

Drawing Title
**TECHNOLOGY SECOND
OVERALL DEMO PLAN**

Approved: Project Director

VAPAHCS PLANNING
AND ENGINEERING

Project Title	BUILDING 100 - UPGRADE NURSE CALL SYSTEM
---------------	---

Location	VAPAHCS - PALO ALTO CAMPUS
	3801 MIRANDA AVE. PALO ALTO, CA 94304

Date
Mar. 4, 2015

PALO ALTO CAMPUS	
E. PALO ALTO, CA 94304	
Checked HC	Drawn CG

Project Number	640-14-117
Building Number	100

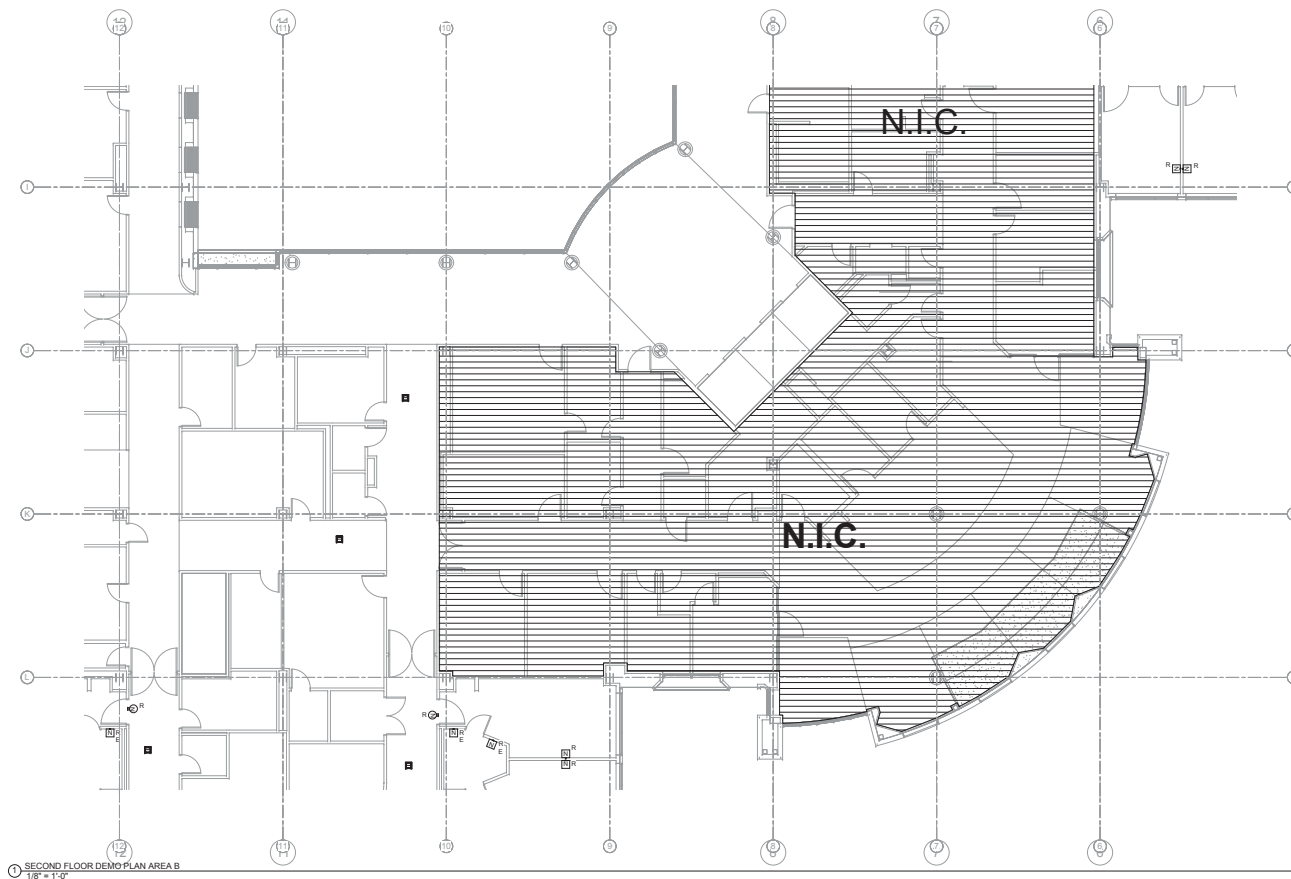
Drawing Number
TD-102

Day = of

FULLY SPRINKLERED

Office of
Construction and
Facilities
Management





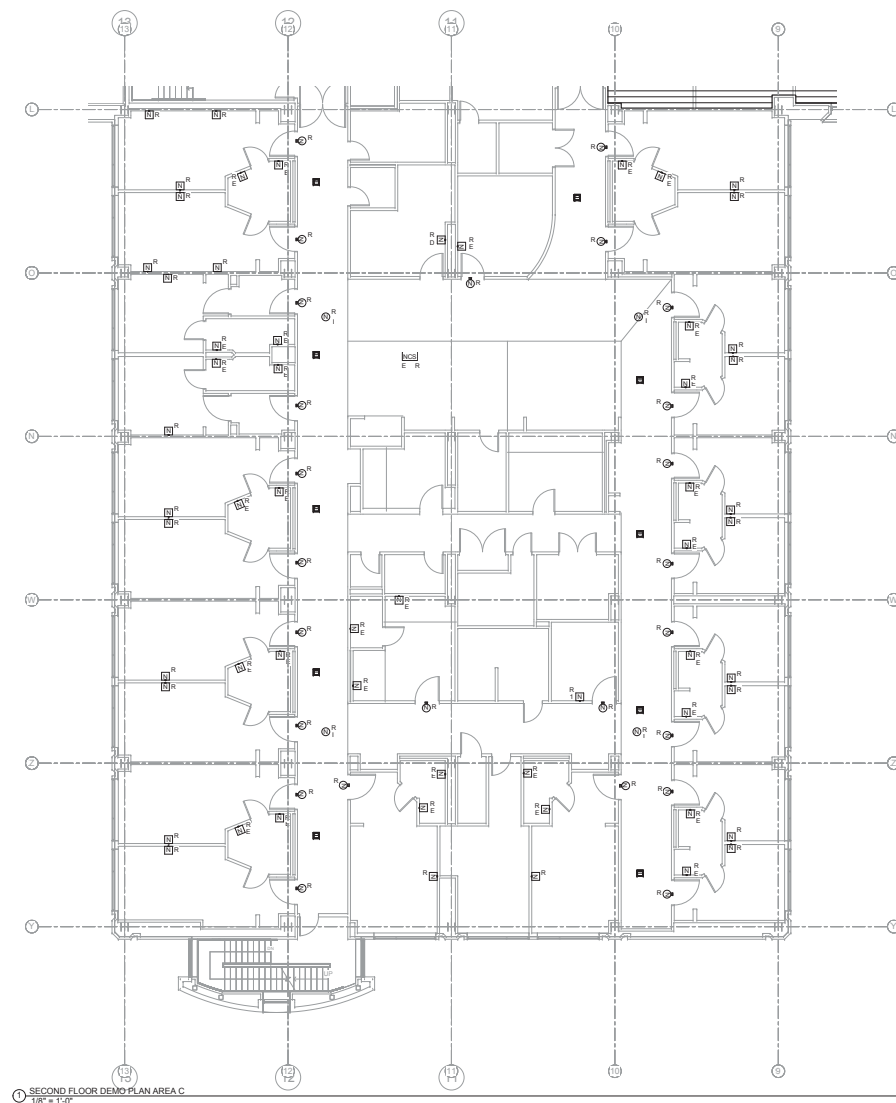


- | |
|-------------------|
| DEMOLITION NOTES: |
|-------------------|

1. PROVIDE WIRELESS SYSTEM TO AUGMENT EXISTING NURSE CALL SYSTEM DURING CONSTRUCTION.
2. REMOVE CABLING BACK TO SOURCE.
3. COORDINATE WITH C.O.R. AND VA PALO ALTO FACILITIES BIOMED.
4. CONDUIT AND BACKBOXES ARE TO REMAIN IN PLACE.

SHEET NOTES:

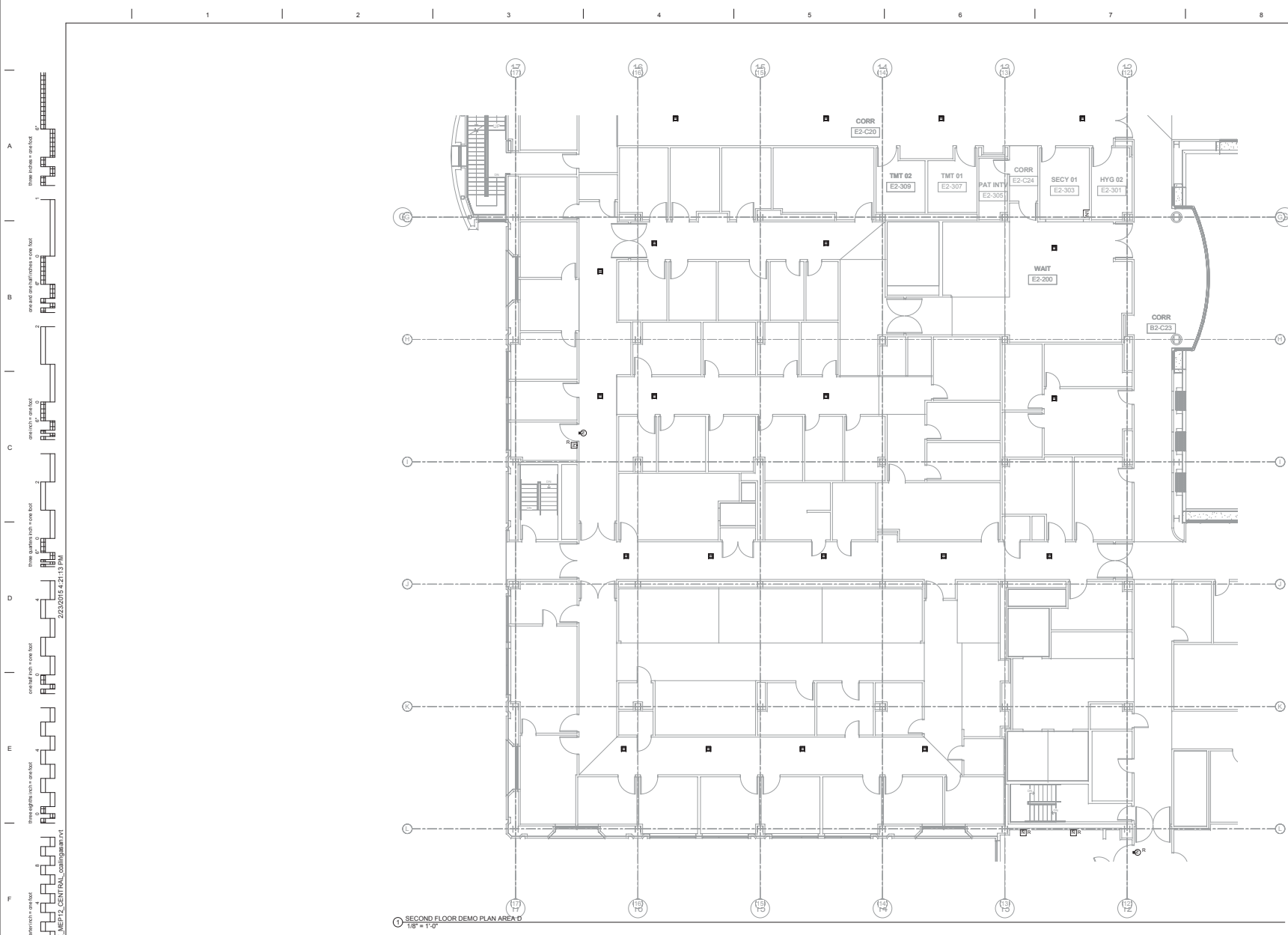
		CONSULTANTS:		ARCHITECT/ENGINEERS:		Drawing Title TECHNOLOGY SECOND PARTIAL DEMO PLAN - AREA B		Project Title BUILDING 100 - UPGRADE NURSE CALL SYSTEM		Project Number 640-14-117		Office of Construction and Facilities Management
		 SYSKA HENNESSY GROUP A member company of GH Group, Inc.		 ENGINEERS ARCHITECTS ONE KAISER PLAZA SUITE 445 OAKLAND CALIFORNIA 94612 TEL 510.271.6701 FAX 510.271.6707 WWW.KPA.GROUP.COM		Approved: Project Director VAPAHCS PLANNING AND ENGINEERING		Location VAPAHCS - PALO ALTO CAMPUS 3801 MIRANDA AVE., PALO ALTO, CA 94304		Drawing Number TD-102B		
Revisions:		Date						Date Mar. 4, 2015		Checked HC		 VAPAHCS VAPAHCS CONSULTING, INC.
										Drawn CC		



- | |
|-------------------|
| DEMOLITION NOTES: |
|-------------------|

SHEET NOTES:





		CONSULTANTS:		ARCHITECT/ENGINEERS:		Drawing Title TECHNOLOGY SECOND PARTIAL DEMO PLAN - AREA C		Project Title BUILDING 100 - UPGRADE NURSE CALL SYSTEM		Project Number 640-14-117		Office of Construction and Facilities Management
		 SYSKA HENNESSY <small>a member company of SH Group, Inc.</small>		 ENGINEERS ARCHITECTS ONE KAISER PLAZA SUITE 445 OAKLAND CALIFORNIA 94612 TEL 510.271.6701 FAX 510.271.6707 THE KPA GROUP		Approved: Project Planning VAPAHCS DIRECTOR AND ENGINEERING		Location VAPAHCS - PALO ALTO CAMPUS 5801 MIDWAY AVE. PALO ALTO, CA 94304		Drawing Number TD-102C		
Revisions:								Date Mar. 4, 2015		Checked HC		
Date								Drawn CC		Dwg. - of -		

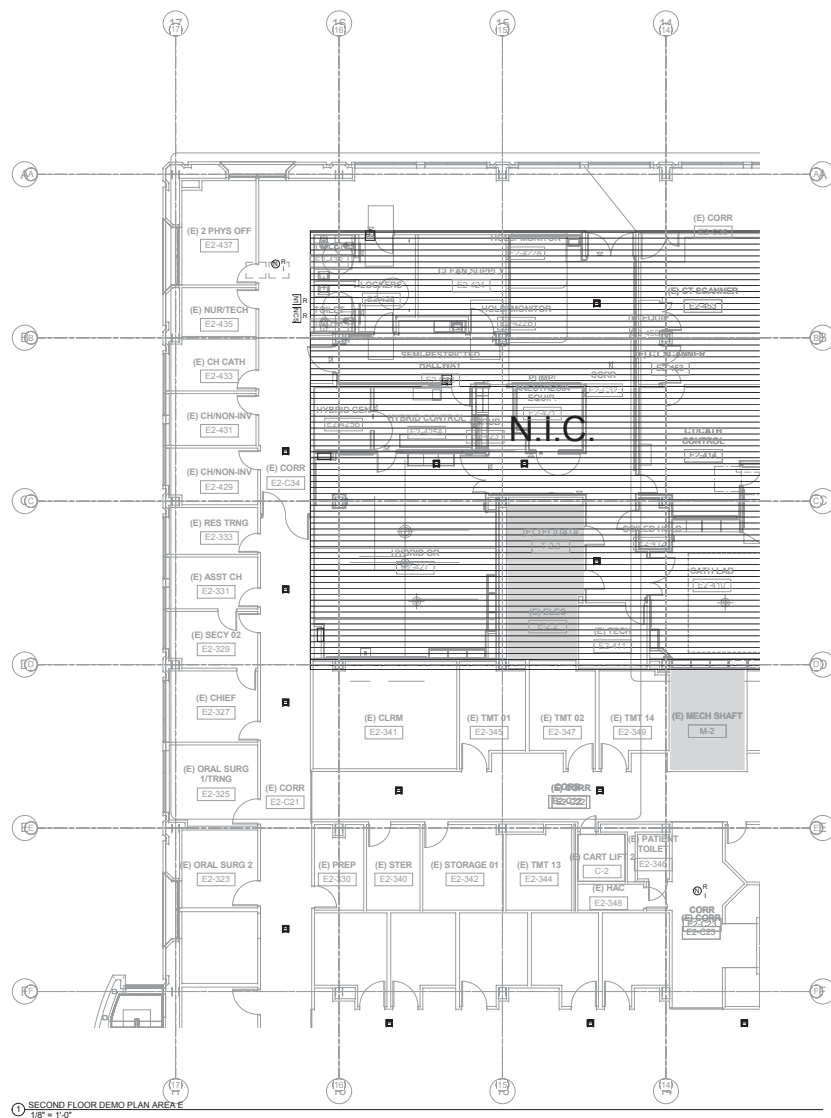


DEMOLITION NOTES:

1. PROVIDE WIRELESS SYSTEM TO AUGMENT EXISTING NURSE CALL SYSTEM DURING CONSTRUCTION.
2. REMOVE CABLING BACK TO SOURCE.
3. COORDINATE WITH C.O.R. AND VA PALO ALTO FACILITIES BIOMED.
4. CONDUIT AND BACKBONES ARE TO REMAIN IN PLACE.

SHEET NOTES:

<div>Revisions:</div> <table><tr><td> </td><td> </td></tr><tr><td> </td><td> </td></tr><tr><td> </td><td> </td></tr><tr><td> </td><td> </td></tr></table>									<div>CONSULTANTS:</div> <div><div>SYSKA HENNESSY A member company of SH Group, Inc.</div><div><small>Syska Hennessy Group, Inc. 425 California Street Suite 190 San Francisco, CA 94104 Tel: 415.268.3060 Fax: 415.835.0365 www.syska.com</small></div></div>	<div></div>	<div>ARCHITECT/ENGINEERS:</div> <div><div>KPA THE KPA GROUP</div><div><small>ENGINEERS ARCHITECTS ONE KAISER PLAZA SUITE 445 OAKLAND, CALIFORNIA 94612 TEL 510.271.6701 FAX 510.271.6707 CITY OF OAKLAND, CA 94612 KPA, INC. 1000 10TH STREET, SUITE 1000, OAKLAND, CA 94612</small></div></div>	<div>Drawing Title:</div> <div>TECHNOLOGY SECOND PARTIAL DEMO PLAN - AREA D</div> <div>Approved: Project Director</div> <div>VAPAHCS PLANNING AND ENGINEERING</div>	<div>Project Title:</div> <div>BUILDING 100 - UPGRADE NURSE CALL SYSTEM</div> <div>Location: VAPAHCS - PALO ALTO CAMPUS 3801 MIRANDA AVE. PALO ALTO, CA 94304</div> <div>Date: Mar. 4, 2015</div> <div>Checked: HC</div> <div>Drawn: CC</div>	<div>Project Number:</div> <div>640-14-117</div> <div>Building Number: 100</div> <div>Drawing Number:</div> <div>TD-102D</div> <div>Dwg. - of -</div>	<div>FULLY SPRINKLERED</div> <div>Office of Construction and Facilities Management</div> <div></div>







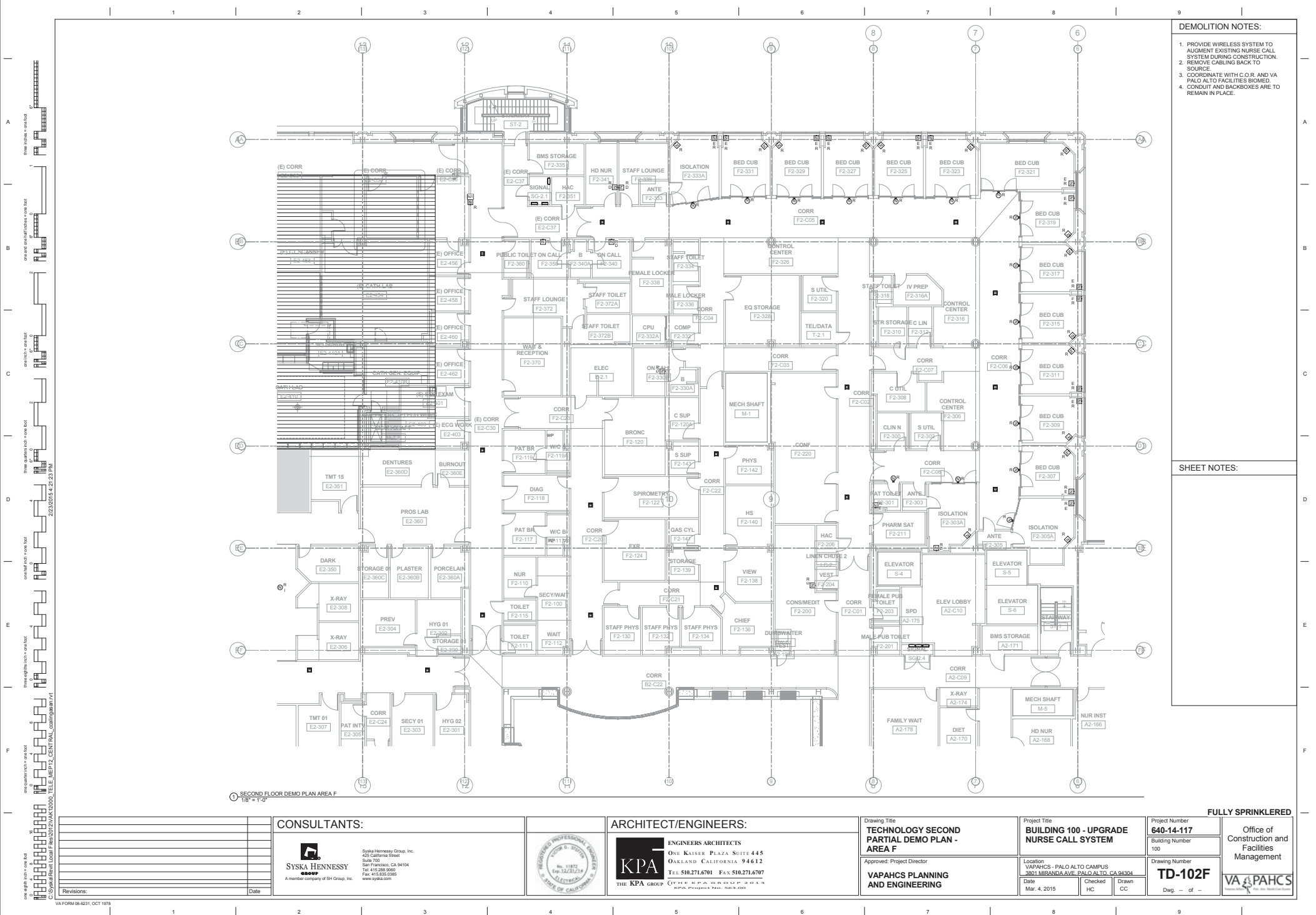
DEMOLITION NOTES:

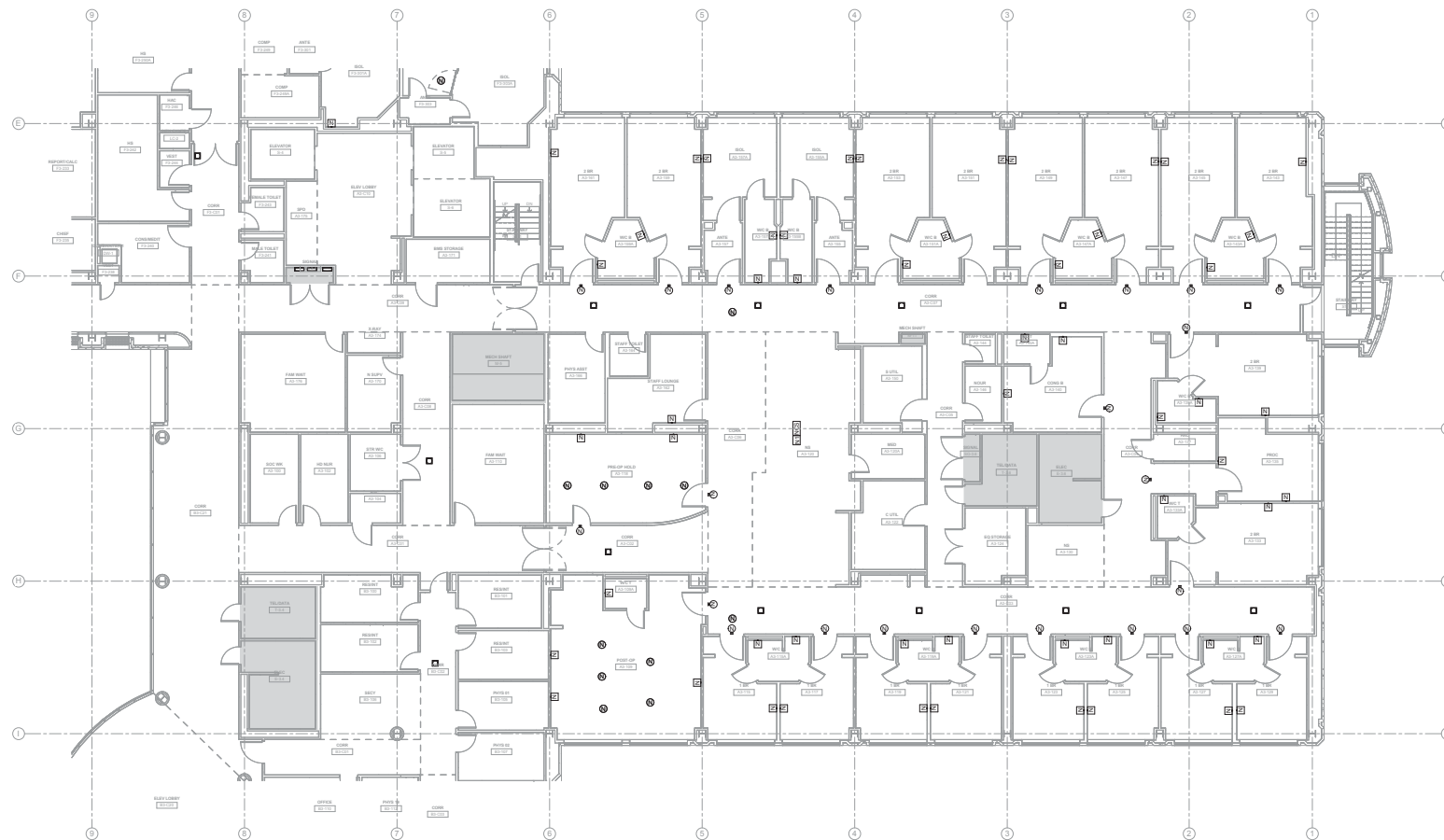
1. PROVIDE WIRELESS SYSTEM TO AUGMENT EXISTING NURSE CALL SYSTEM DURING CONSTRUCTION.
2. REMOVE CABLING BACK TO SOURCE.
3. COORDINATE WITH C.O.R. AND VA PALO ALTO FACILITIES BIOMED.
4. CONDUIT AND BACKBOXES ARE TO REMAIN IN PLACE.

SHEET NOTES:

FULLY SPRINKLERED

		CONSULTANTS:		ARCHITECT/ENGINEERS:		Drawing Title TECHNOLOGY SECOND PARTIAL DEMO PLAN - AREA E		Project Title BUILDING 100 - UPGRADE NURSE CALL SYSTEM		Project Number 640-14-117		Office of Construction and Facilities Management			
		 SYSKA HENNESSY <small>GROUP</small> A member company of SHI Group, Inc.		 ENGINEERS ARCHITECTS ONE KAISER PLAZA SUITE 445 OAKLAND CALIFORNIA 94612 TEL 510.271.6701 FAX 510.271.6707 CIVIL, MECHANICAL, ELECTRICAL, PLUMBING, P.E. & E.E.T.A. KPA, PROFESSIONAL REG. NO. 11872				Approved: Project Director VAPAHCs PLANNING AND ENGINEERING		Location VAPAHCs - PALO ALTO CAMPUS 3801 MIRANDA AVE., PALO ALTO, CA 94304		Drawing Number TD-102E			
Revisions:		Date				Date Mar. 4, 2015		Checked HC		Drawn CC		Dwg. - of -			






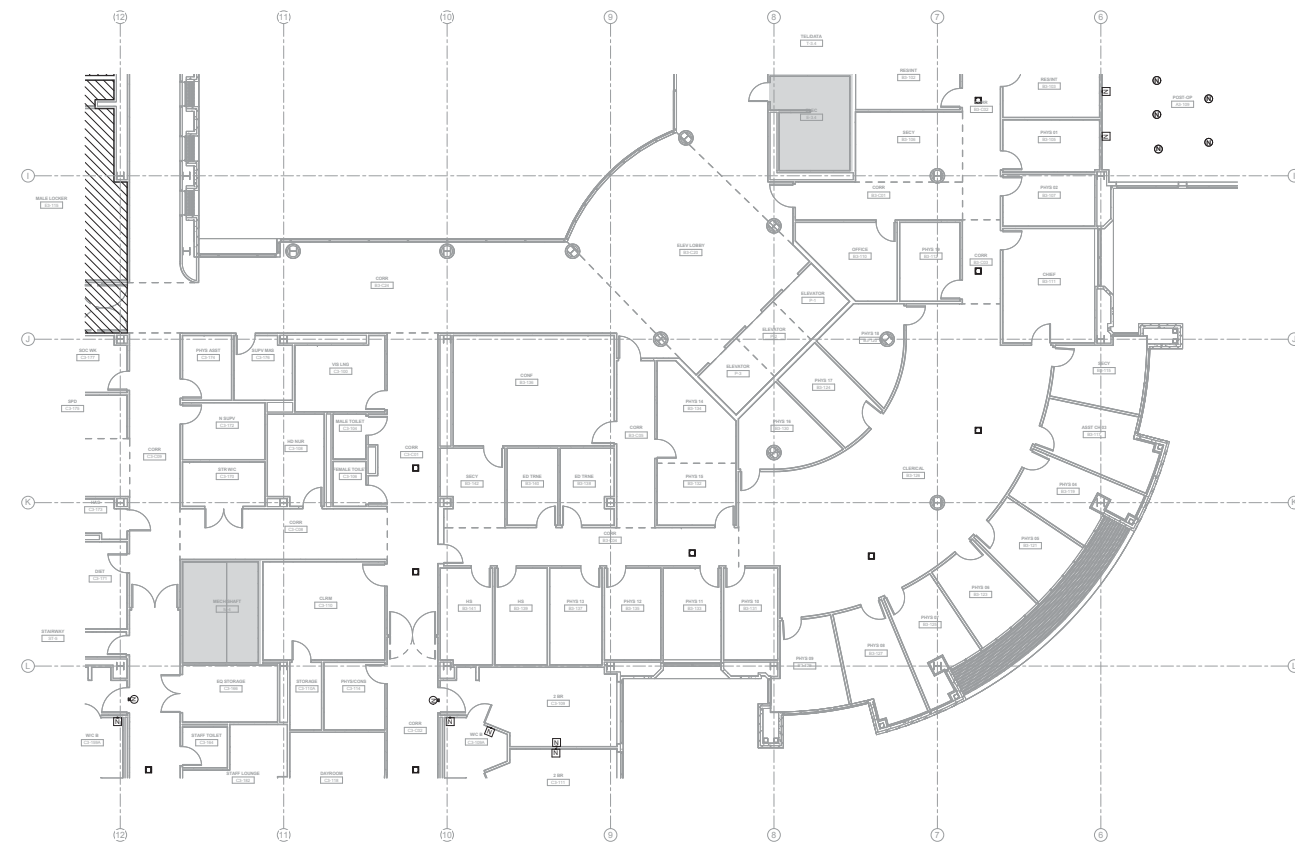
1 THIRD FLOOR TECHNOLOGY DEMO
PLAN AREA A
1/8" = 1'-0"

DEMOLITION NOTES:

1. PROVIDE WIRELESS SYSTEM TO AUGMENT EXISTING NURSE CALL SYSTEM DURING CONSTRUCTION.
2. REMOVE CABLING BACK TO SOURCE.
3. COORDINATE WITH C.O.R. AND VA PALO ALTO FACILITIES BIOMED.
4. CONDUIT AND BACKBOXES ARE TO REMAIN IN PLACE.

SHEET NOTES:

		CONSULTANTS:		ARCHITECT/ENGINEERS:		Drawing Title TECHNOLOGY THIRD PARTIAL DEMO PLAN - AREA A		Project Title BUILDING 100 - UPGRADE NURSE CALL SYSTEM		Project Number 640-14-117		Office of Construction and Facilities Management
		 SYSKA HENNESSY <small>GROUP</small> A member company of SH Group, Inc.		 ENGINEERS ARCHITECTS ONE KAISER PLAZA SUITE 445 OAKLAND CALIFORNIA 94612 TEL 510.271.6701 FAX 510.271.6707 WWW.KPA-ARCH.COM		Approved: Project Director VAPAHCS PLANNING AND ENGINEERING		Location VAPAHCS - PALO ALTO CAMPUS 3801 MIRANDA AVENUE, PALO ALTO, CA 94304		Drawing Number TD-103A Dwg. -- of --		
Revisions:		Date						Date Mar. 4, 2015		Checked HC		Drawn CC



THIRD FLOOR TECHNOLOGY DEMO
PLAN AREA B
1/8" = 1'-0"

DEMOLITION NOTES:

1. PROVIDE WIRELESS SYSTEM TO AUGMENT EXISTING NURSE CALL SYSTEM DURING CONSTRUCTION.
2. REMOVE CABLING BACK TO SOURCE.
3. COORDINATE WITH C.O.R. AND VA PALO ALTO FACILITIES BIOMED.
4. CONDUIT AND BACKBOXES ARE TO REMAIN IN PLACE.





SHEET NOTES:

		CONSULTANTS:  SYSKA HENNESSY <small>an member company of SH Group, Inc.</small>				ARCHITECT/ENGINEERS:  ENGINEERS ARCHITECTS ONE KAISER PLAZA SUITE 445 OAKLAND CALIFORNIA 94612 TEL: 510.271.6701 FAX: 510.271.6707 THE KPA GROUP		Drawing Title TECHNOLOGY THIRD PARTIAL DEMO PLAN - AREA B Approved: Project Director VAPAHCS PLANNING AND ENGINEERING		Project Number 640-14-117 Building Number 100 Drawing Number TD-103B		Project Title BUILDING 100 - UPGRADE NURSE CALL SYSTEM Location VAPAHCS - PALO ALTO CAMPUS 3801 MERCANTILE AVE. PALO ALTO, CA 94304 Date Mar. 4, 2015 Checked HC Drawn CC Date Mar. 4, 2015 Checked HC Drawn CC		Office of Construction and Facilities Management 	
Revisions:		Date													



- | DEMOLITION NOTES: | |
|-------------------|--|
| 1. | PROVIDE WIRELESS SYSTEM TO AUGMENT EXISTING NURSE CALL SYSTEM DURING CONSTRUCTION. |
| 2. | REMOVE CABLING BACK TO SOURCE. |
| 3. | COORDINATE WITH C.O.R. AND VA PALO ALTO FACILITIES BIOMED. |
| 4. | CONDUIT AND BACKBOXES ARE TO REMAIN IN PLACE. |

SHEET NOTES:

		CONSULTANTS:  SYSKA HENNESSY GROUP A member company of SH Group, Inc. Syska Hennessy Group, Inc. 455 California Street Suite 700 San Francisco, CA 94104 Tel: 415.393.0800 Fax: 415.639.0885 www.syskahg.com				ARCHITECT/ENGINEERS:  ENGINEERS ARCHITECTS ONE KAISER PLAZA SUITE 445 OAKLAND CALIFORNIA 94612 Tel: 510.271.6701 Fax: 510.271.6707 THE KPA GROUP		Drawing Title TECHNOLOGY THIRD PARTIAL DEMO PLAN - AREA D Approved: Project Director VAPAHCS PLANNING AND ENGINEERING		Project Title BUILDING 100 - UPGRADE NURSE CALL SYSTEM Location VAPAHCS - PALO ALTO CAMPUS 3801 MIRANDA AVE, PALO ALTO, CA 94304 Date Mar 4, 2015		Project Number 640-14-117 Building Number 100 Drawing Number TD-103D Dwg. - of -		FULLY SPRINKLERED Office of Construction and Facilities Management 	
Revisions:		Date													