

4th Floor - Ward 4B

Contractor to furnish and install wall mounted CAT-6 jack and wiring complete to VA telephony room for VA provided phone.

New monitor at nurses station to view entry cameras on both sides of the double doors. New release button at the nurses station to release the mag lock when pressed by the Nursing attendant.

Contractor to install VA furnished CISCO switch. Contractor to provide fiber to 3rd floor LENEL switch for connection. This is the location for the LENEL power supply cabinet and LENEL boards to be installed for the access control. Contractor to furnish and install a LENEL client computer (Dell Optiplex) that feeds the monitor at the nurses station.

Crashbar to remain, instead use a 6400 mortise strike & Door Contractor to disable stairwell side of the door hardware

Camera - Axis M3006V
(Typical of 6)

VA furnished phone location

LENEL Panic Alarm Location

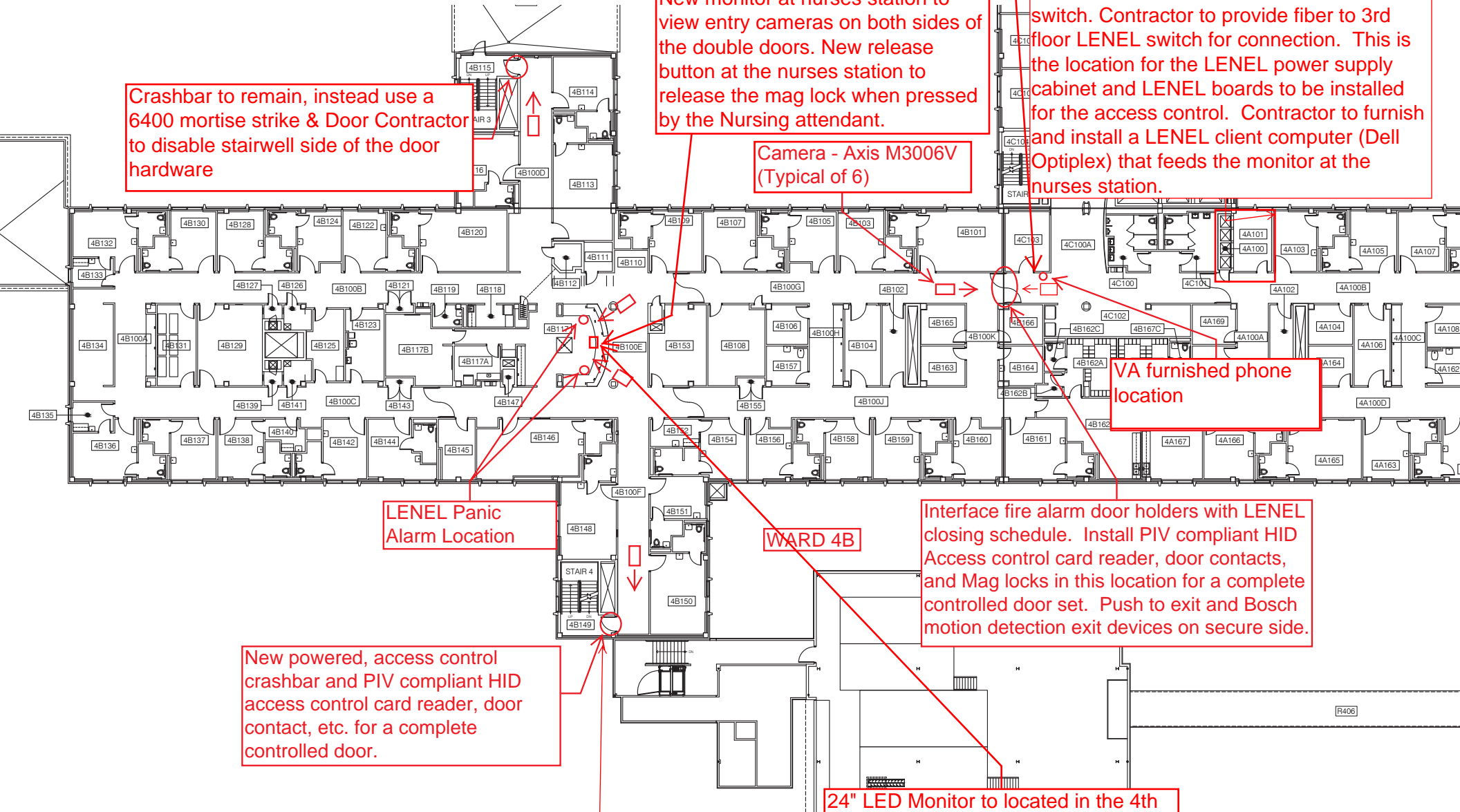
WARD 4B

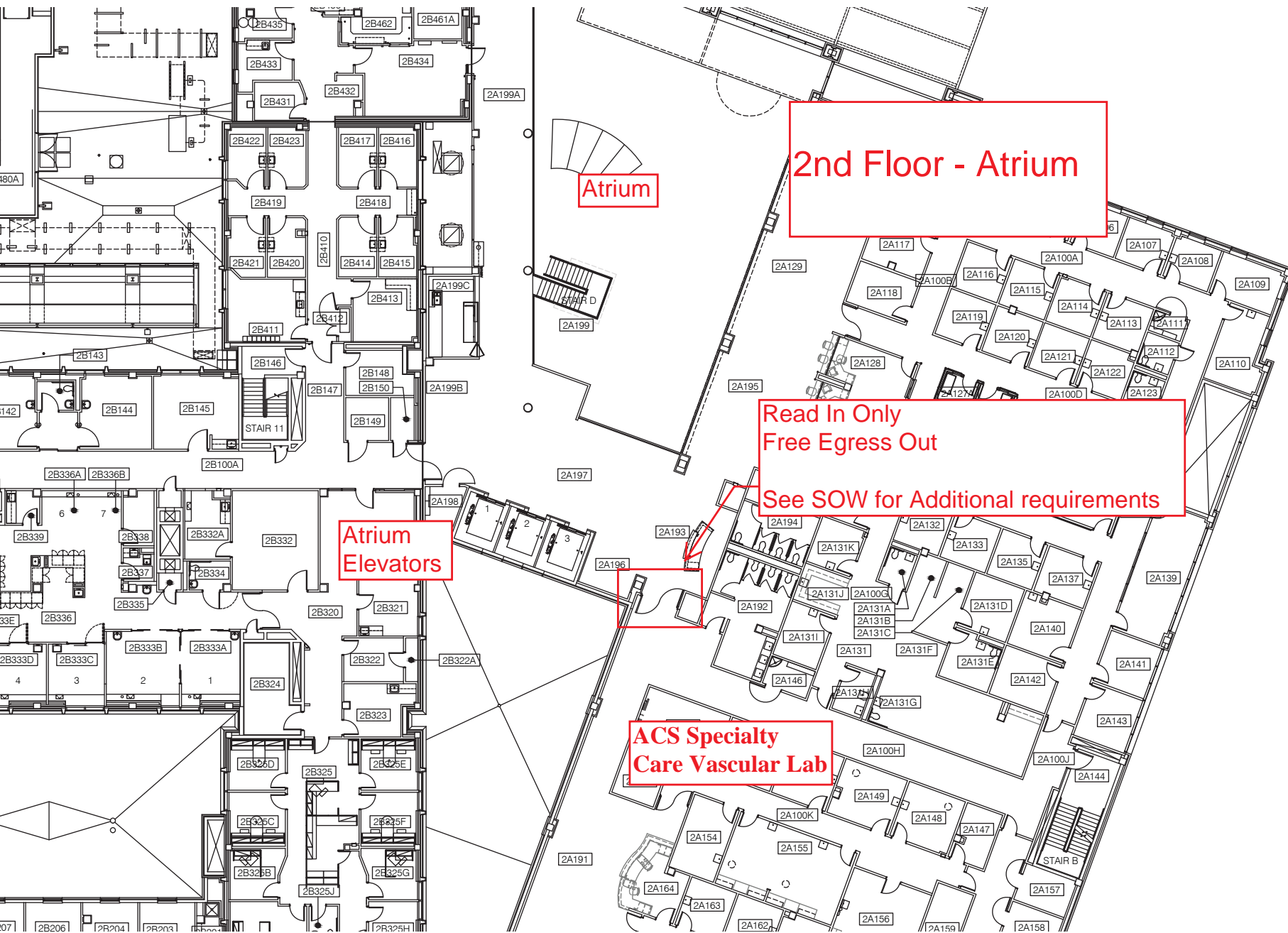
Interface fire alarm door holders with LENEL closing schedule. Install PIV compliant HID Access control card reader, door contacts, and Mag locks in this location for a complete controlled door set. Push to exit and Bosch motion detection exit devices on secure side.

New powered, access control crashbar and PIV compliant HID access control card reader, door contact, etc. for a complete controlled door.

Crashbar to remain, use a 6400 mortise strike & Door Contractor to disable stairwell side of the door hardware

24" LED Monitor to located in the 4th FL IT Room where new LENEL Panel to be located, No Keyboard or Mouse at Nurses Station





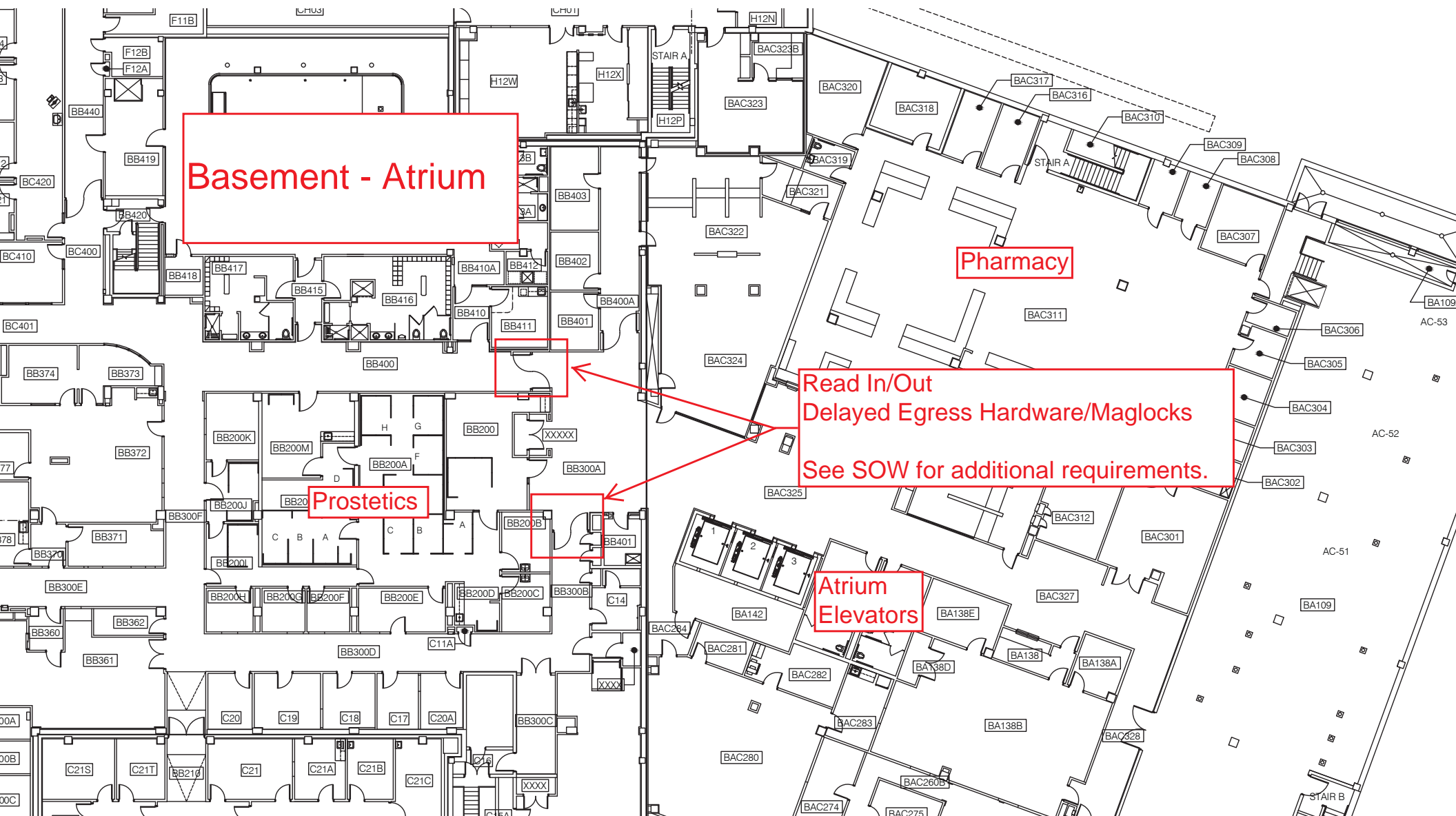
2nd Floor - Atrium

Atrium

Read In Only
Free Egress Out
See SOW for Additional requirements

Atrium
Elevators

ACS Specialty
Care Vascular Lab



West Skywalk

Read In HID Reader
Long Range Reader In/Out
Delayed Egress Hardware/Maglocks
Automatic Door Openers

See SOW for additional requirements

