

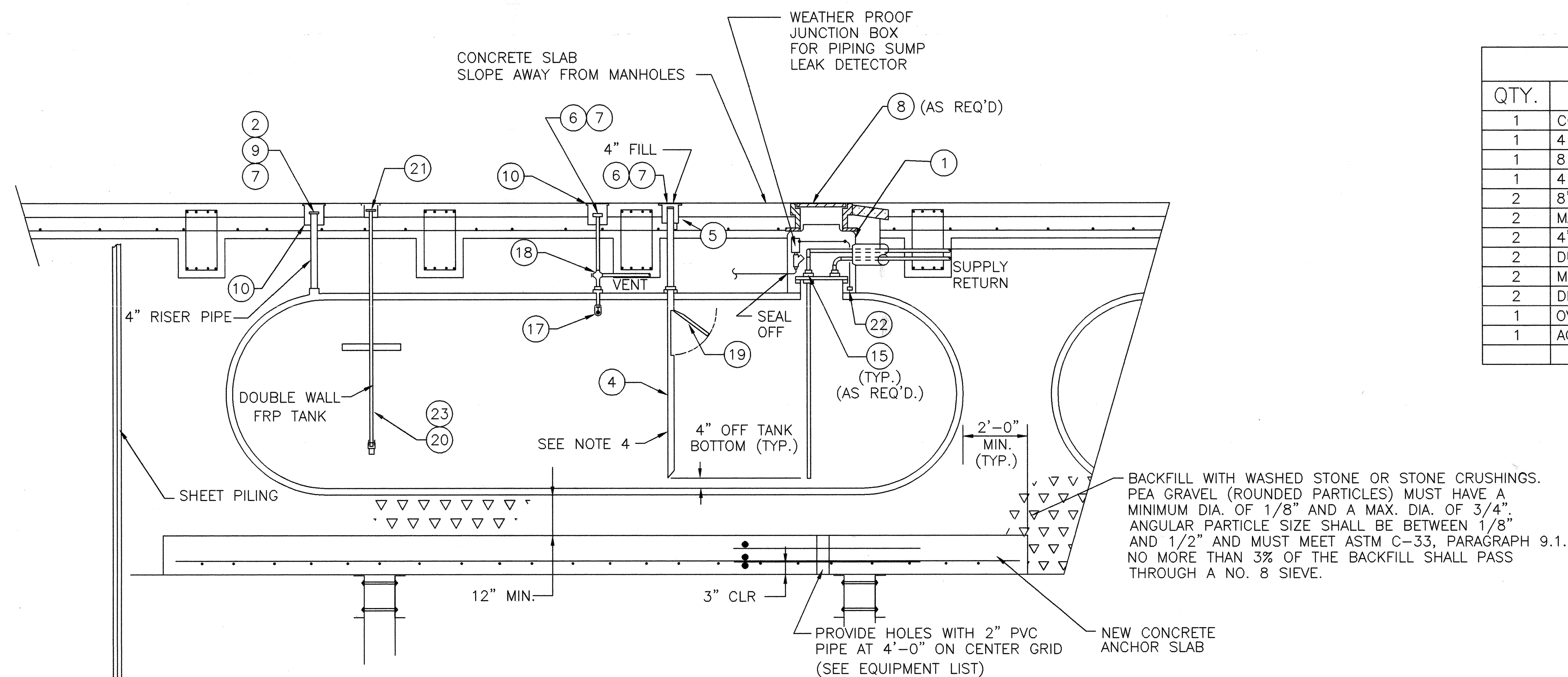
LEVEL / ALARMS (Veeder Root Design Basis)		
QTY.	DESCRIPTION	VEEDER ROOT PART #
1	CONSOLE TLS-350 W/PRINTER	847040-022
1	4 INPUT PROBE INTERFACE MODULE	329356-002
1	8 INPUT INTERSTITIAL/LIQUID SENSOR	329358-001
1	4 RELAY OUTPUT INTERFACE MODULE	329359-001
2	8 MAGNETOSTRICTIVE PROBE	847390-107
2	MAG. PROBE INSTALL KITS FOR DIESEL (FLOAT)	849600-001
2	4" RISER CAP & RING KIT	312020-952
2	DUAL FLOAT HYDROSTATIC SENSOR	794380-302
2	MOUNTING BRACKET	330020-012
2	DISCRIMINATING CONTAINMENT SUMP SENSOR	794380-352
1	OVERFILL ALARM	790091-001
1	ACKNOWLEDGEMENT SWITCH	790095-001

EQUIPMENT LIST		
ITEM	DESCRIPTION	BASIS FOR DESIGN
1	PIPING CONTAINMENT SUMP	FLUID CONTAINMENT
2	FLEXIBLE DIPSTICK MONITOR ASSEMBLY	FLUID CONTAINMENT
3 *	FRP ANCHOR STRAPS (SPLIT STRAP)	FLUID CONTAINMENT
4	4" SUBMERGED DROP TUBE	UNIVERSAL (SEE NOTE 4)
5	SPILL CONTAINMENT MANHOLE W/DRAIN	UNIVERSAL
6	4" TOGGLE LEVER CAP	UNIVERSAL
7	4" BRONZE ADAPTOR	UNIVERSAL
8	30"x10" RAIN TIGHT ROUND MANHOLE	UNIVERSAL
9	4" LOCKING PIPE PLUG	UNIVERSAL
10	MONITORING WELL MANHOLE	UNIVERSAL
11 *	LEAK DETECTOR/MONITOR	VEEDER-ROOT
12 *	SENSOR (BRINE LEVEL)	VEEDER-ROOT
13 *	NYLON CONNECTOR	—
14 *	DRAW STRING	FLUID CONTAINMENT
15	DOUBLE TAP BUSHING	—
16 *	MALE NPT ADAPTER (AS REQ'D)	—
17	FLOAT VENT VALVE	UNIVERSAL
18	VENT VALVE ASSEMBLY	UNIVERSAL
19	OVERFILL PREVENTION VALVE	OPW
20	TANK LEVEL GAUGE	VEEDER-ROOT
21	CAST IRON MANHOLE	OPW
22 *	PIPING SUMP SENSOR	VEEDER-ROOT
23 *	LEVEL PROBE	VEEDER-ROOT

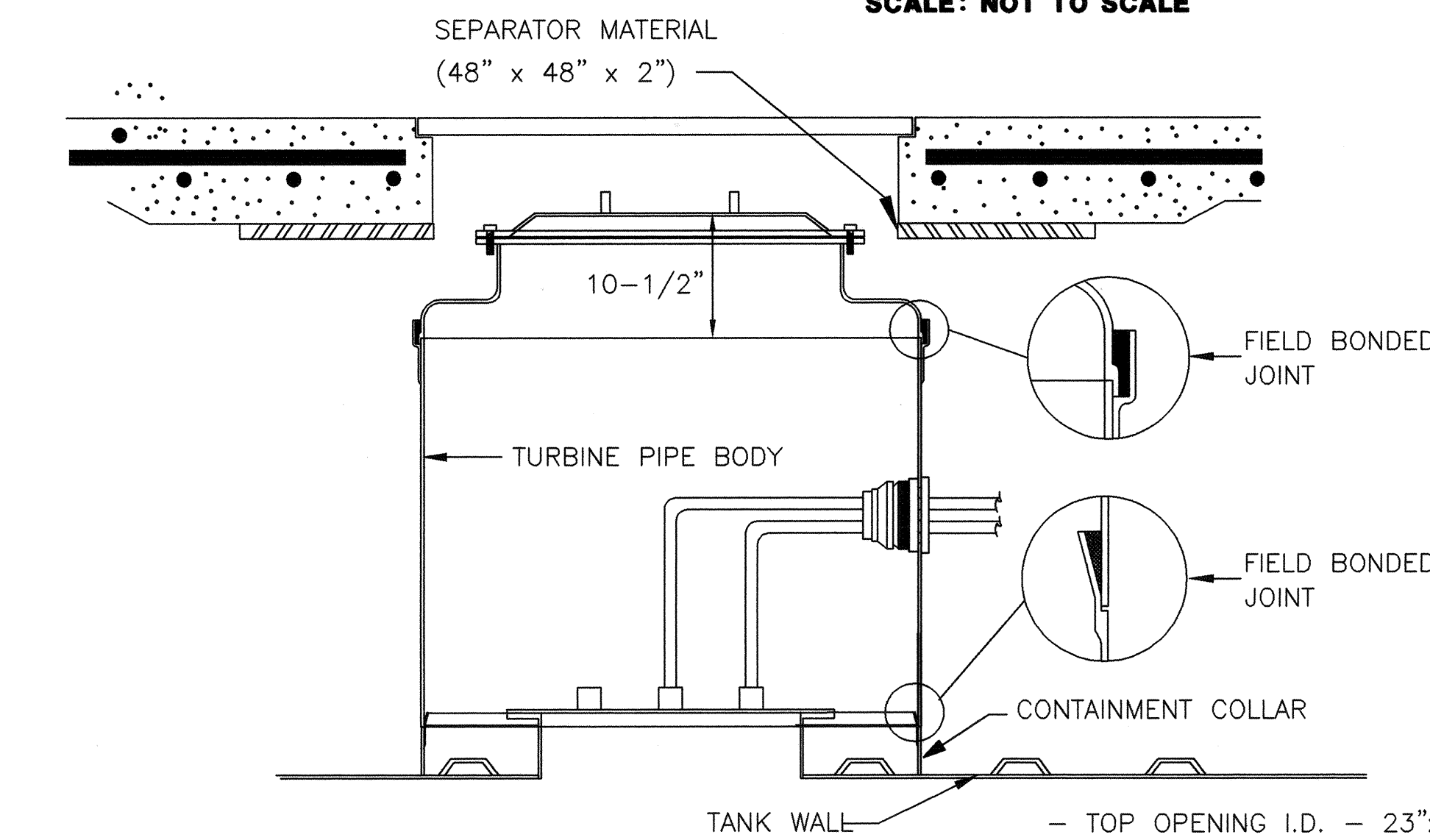
\*NOT SHOWN

#### DRAWING NOTES:

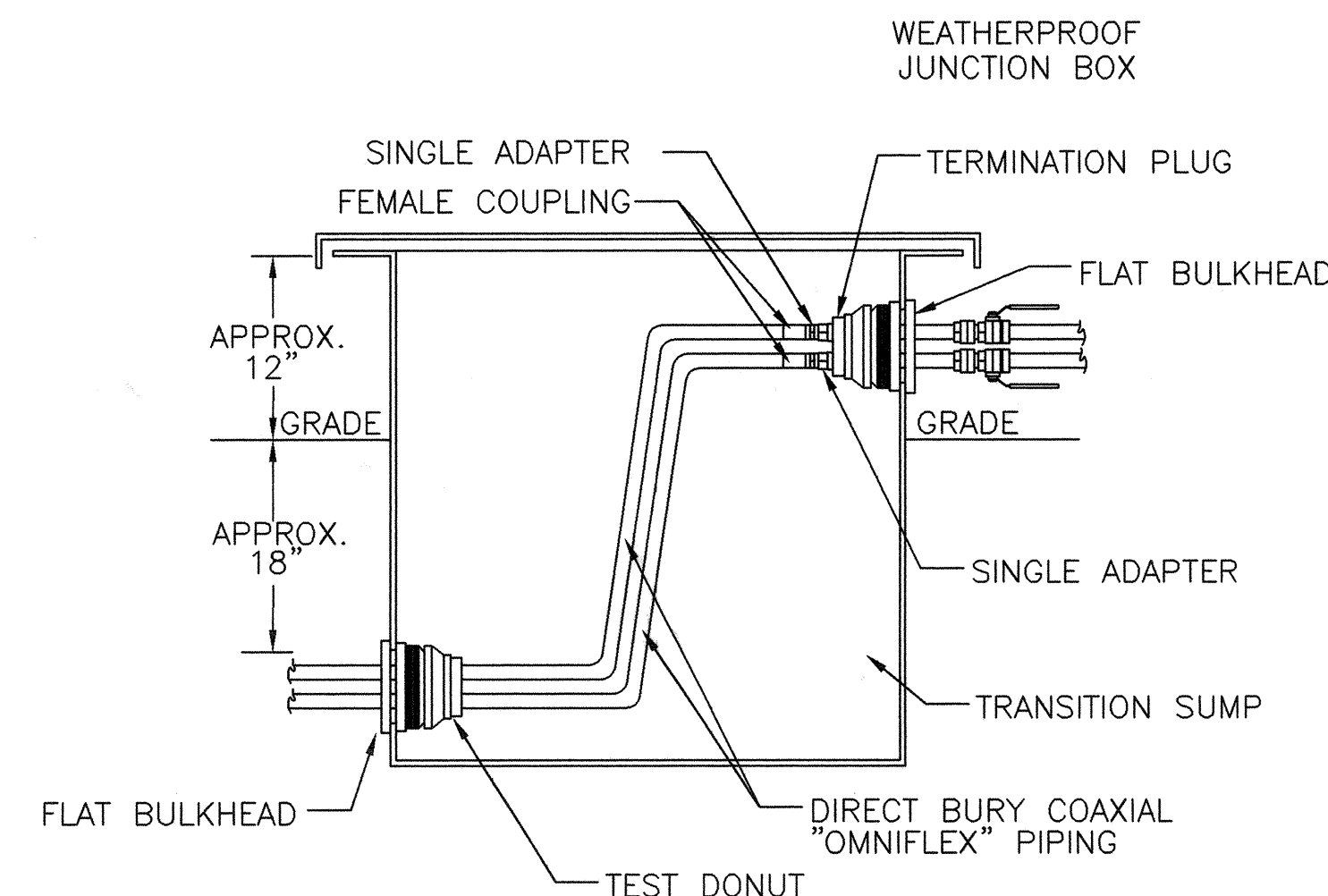
- LIFT AND INSTALL NEW TANK PER MANUFACTURER'S RECOMMENDATIONS USING LIFTING LUGS ONLY. DO NOT ROLL!
- ALL CONTAINMENT, OIL, AND VENT PIPING MUST SLOPE TOWARD PIPING CONTAINMENT SUMP.
- AFTER INSTALLATION AND BEFORE FINAL BACKFILLING TO GRADE, THE TANK MUST BE RETESTED TO ASSURE THAT NO DAMAGE OCCURRED DURING INSTALLATION.
- PLACEMENT OF PEA GRAVEL AND GEOTEXTILE FABRIC IS SHOWN VERTICALLY; HOWEVER THIS WILL VARY AS REQUIRED WITH ACTUAL BACKFILL ANGLES OF REPOSE.
- VENT CAP SHALL TERMINATE WITH A 2" UNIVERSAL #45 "UPFLOW" VENT CAP OR EQUAL.
- FUEL OIL VENT PIPING SHALL BE GROUNDED AND BONDED IN ACCORDANCE WITH THE NATIONAL ELECTRICAL CODE.



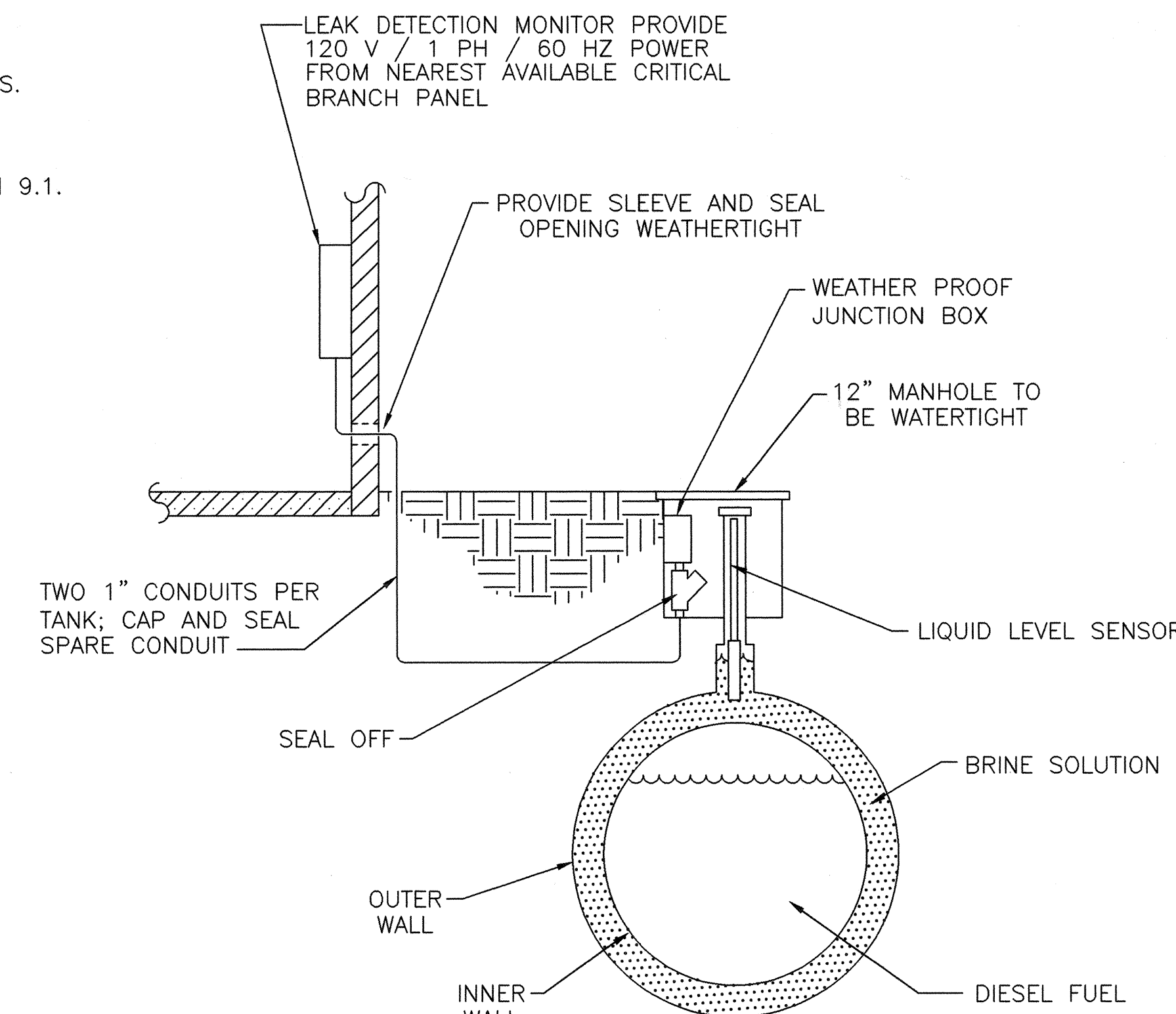
**UNDERGROUND STORAGE TANK DETAIL (TYP OF 2)**  
SCALE: NOT TO SCALE



**SEALED FRP TURBINE**  
SCALE: NOT TO SCALE



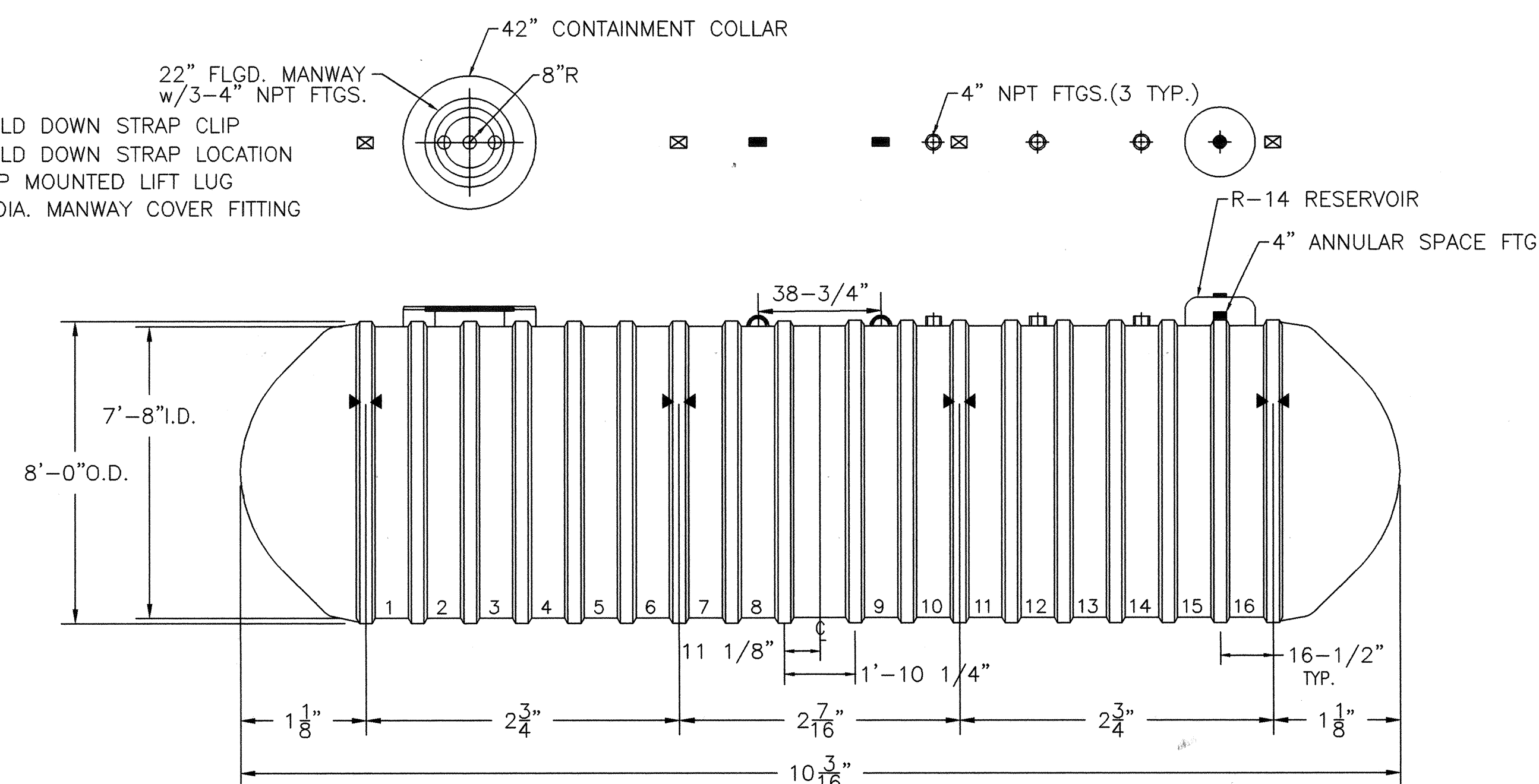
**36" x 36" x 36" TRANSITION BOX**  
SCALE: NOT TO SCALE



**HYDROSTATIC MONITORING DETAIL (TYP OF 2)**  
SCALE: NOT TO SCALE

#### NOTES:

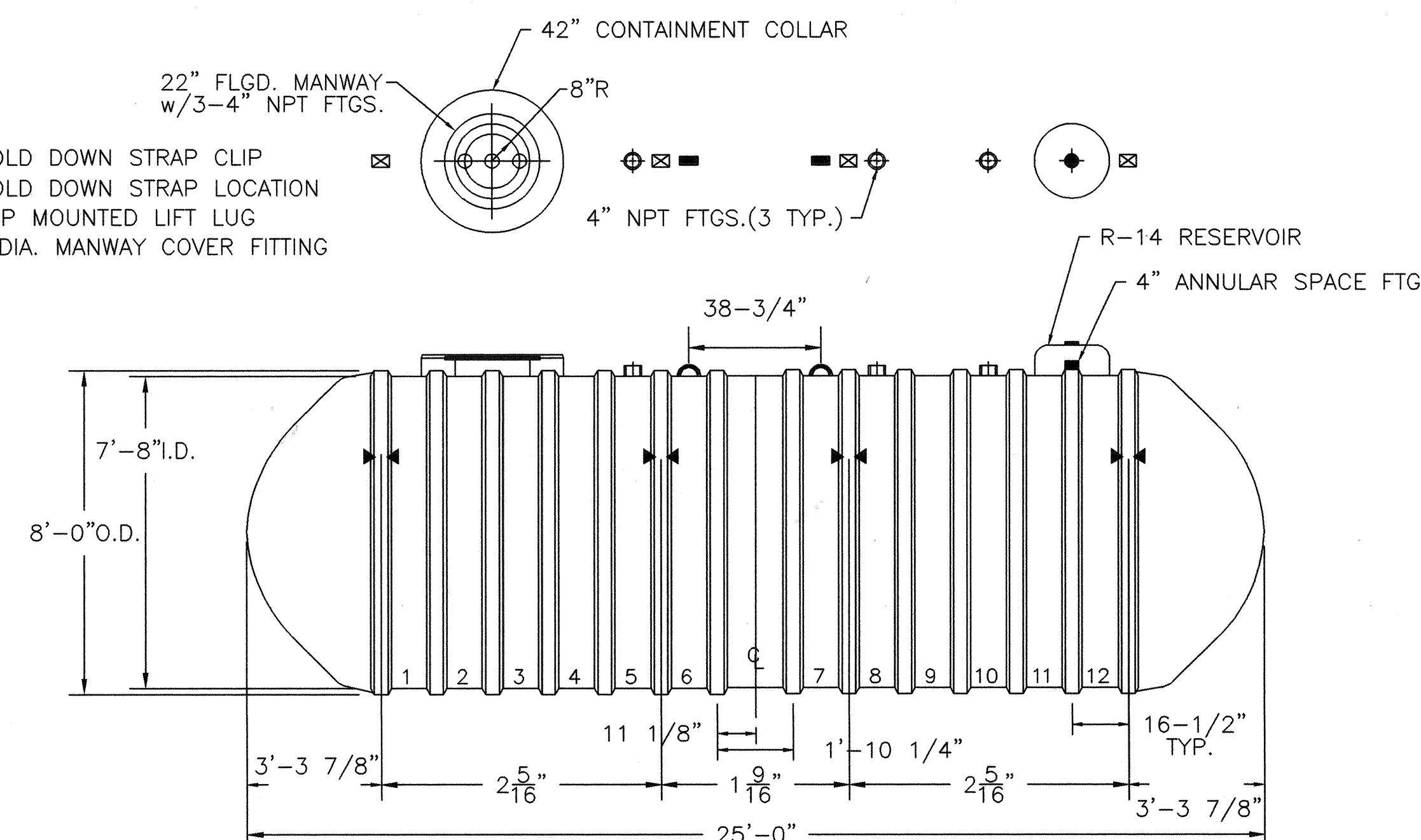
- HOLD DOWN STRAP CLIP
- HOLD DOWN STRAP LOCATION
- TOP MOUNTED LIFT LUG
- 4" DIA. MANWAY COVER FITTING



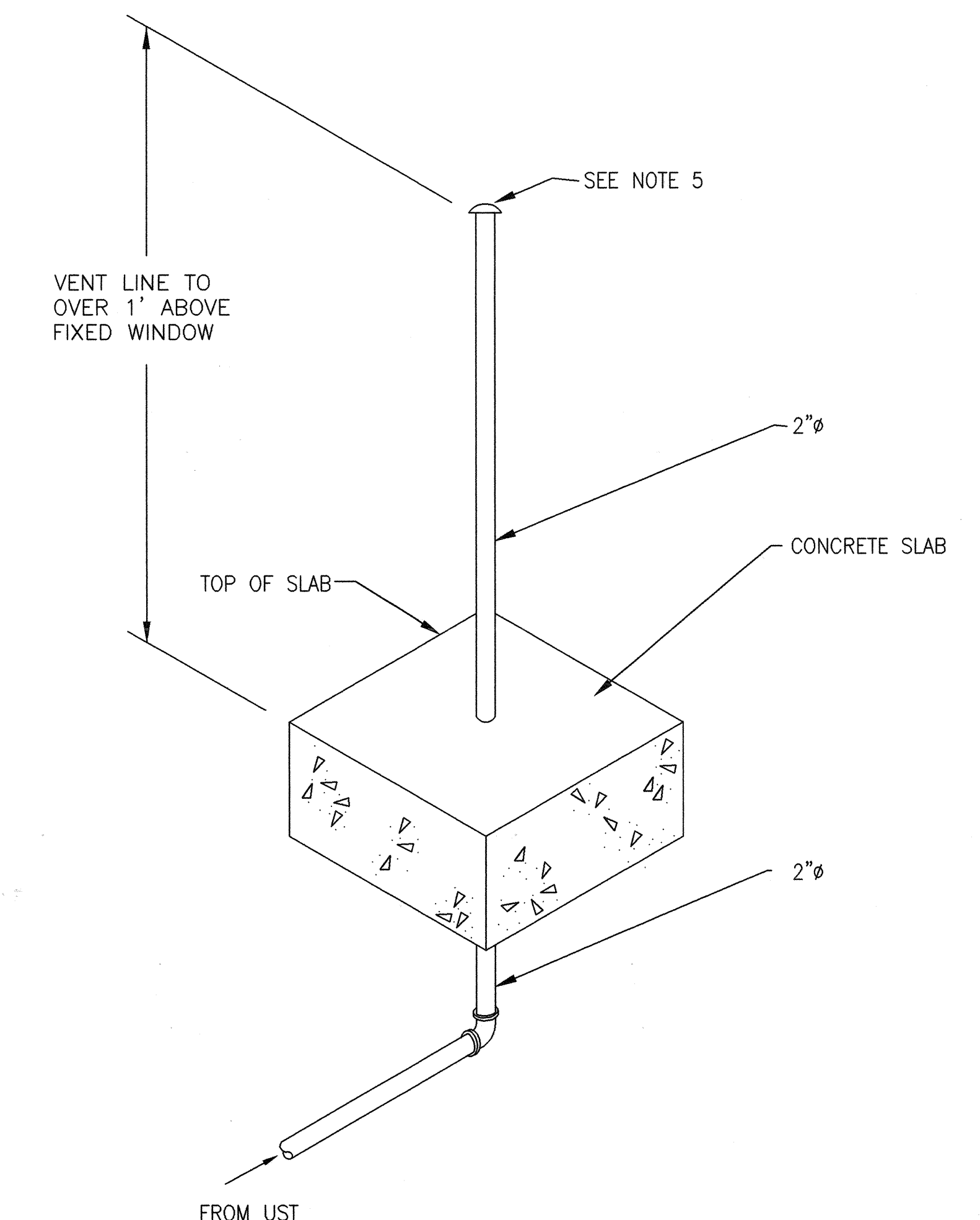
**10,000 GAL. FUEL TANK DETAIL (UST #2)**  
SCALE: NOT TO SCALE

#### NOTES:

- HOLD DOWN STRAP CLIP
- HOLD DOWN STRAP LOCATION
- TOP MOUNTED LIFT LUG
- 4" DIA. MANWAY COVER FITTING



**3,000 GAL. FUEL OIL TANK DETAIL (UST #1)**  
SCALE: NOT TO SCALE



**VENT PIPE CONNECTION DETAIL**  
SCALE: NOT TO SCALE

Revisions	Date	Architect/Engineer Seal	Architect/Engineer Address	Drawing Title	Project Title	Date
				FUEL OIL PIPING DETAILS	REPLACE UNDERGROUND FUEL TANK	06/26/1998
				Approved: Division Chief	Building Number	Project No. 534-98-804
				Approved: Service Director	Location	DRAWING NO. FO-3
					CHARLESTON, S.C.	Dwg. 10 of 10