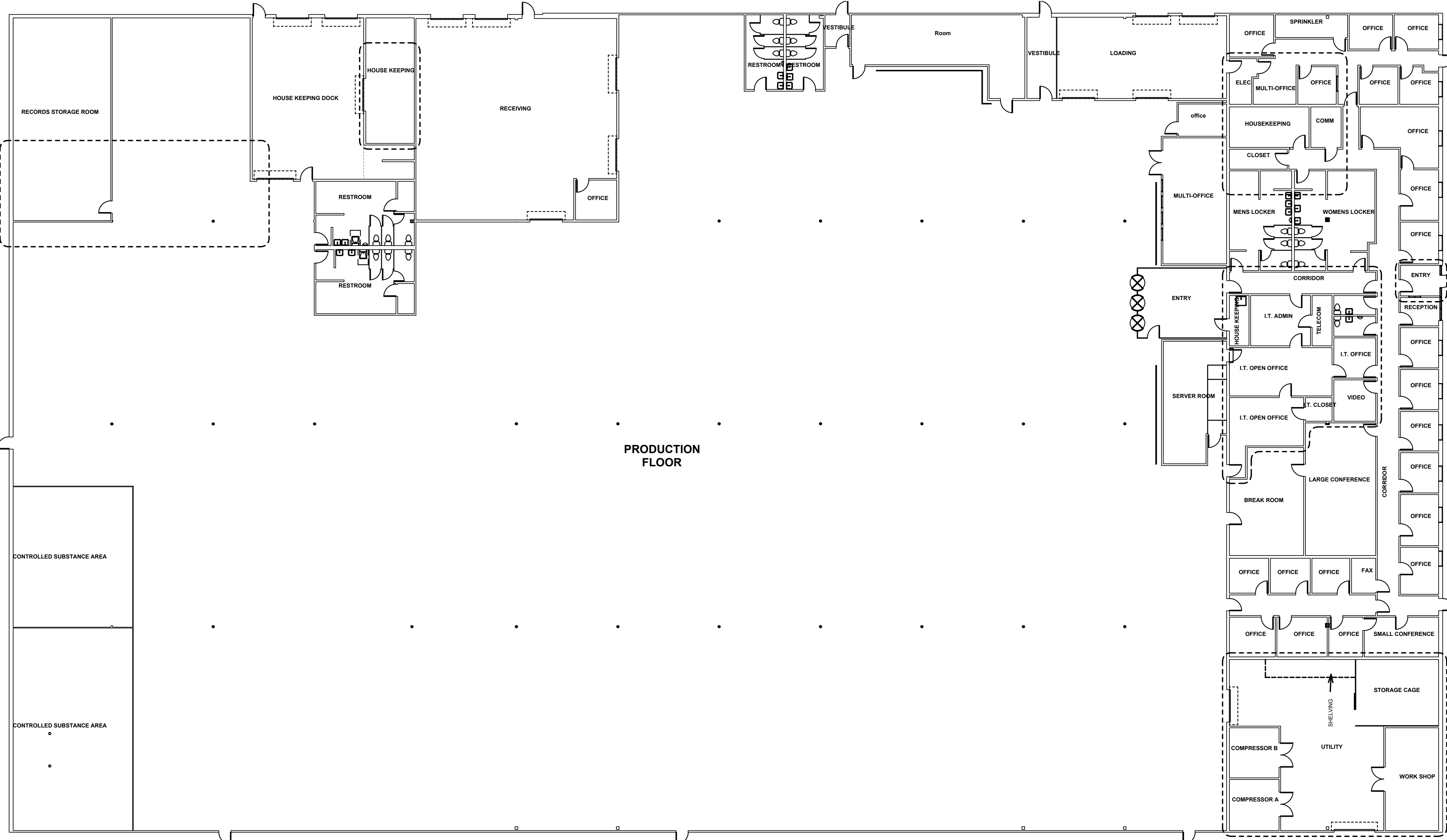


SHANE M. LUTZ eight 1/8" inch = one foot
0 4 8 16
one quarter inch = one foot
0 4
one eighth inch = one foot
0 4 8
three eighths inch = one foot
0 4 8
one half inch = one foot
0 6
three quarters inch = one foot
0 6
one inch = one foot
0 6
two inches = one foot
0 6 12

DRAWING INDEX

Sheet #	Sheet Name
MEP0	COVER SHEET
MEP1	LEGENDS & ABBREVIATIONS
MEP2	OVERALL FLOOR PLAN
MEP3	ENLARGED FLOOR PLANS
MEP4	DETAILS
MEP5	SPECIFICATIONS
MEP6	SPECIFICATIONS
MEP7	SPECIFICATIONS
MEP8	SPECIFICATIONS
MEP9	SPECIFICATIONS



B8 OVERALL EXISTING FLOOR PLAN
1/16" = 1'-0" ----- = PRIMARY AREAS OF WORK

Consolidated Mail Outpatient Pharmacy (CMOP) Renovation Phase II Project Leavenworth, Kansas

Revision	Date

CONSULTANTS:

HENDERSON ENGINEERS

8325 LENEVA DRIVE
LENEVA, KS 66214
TEL 913 742-5000 FAX 913 742-5001
www.hel-eng.com
1050001612
KS. CORPORATE NUMBER: E325
EXPIRES 12/31/12

Seal

ARCHITECT:

TOMPKINS ARCHITECTS

612 NW Kay Drive Lee's Summit Missouri 64063
p. 816 525 9833 f. 816 524-9005 www.tom-arch.com

COPYRIGHT 2015 TOMPKINS ASSOCIATES, INC DBA TOMPKINS ARCHITECTS. ALL RIGHTS RESERVED. NO PART OF THESE DOCUMENTS MAY BE REPRODUCED, STORED IN A RETRIEVAL SYSTEM, OR TRANSMITTED IN ANY FORM OR BY ANY MEANS, ELECTRONIC, MECHANICAL, PHOTOCOPIING, RECORDING, OR OTHERWISE, WITHOUT THE PRIOR WRITTEN PERMISSION OF TOMPKINS ASSOCIATES, INC DBA TOMPKINS ARCHITECTS.

Drawing Title

COVER SHEET

Approved:

Project Title

**VA CMOP
EYE WASH AND WELDING HOOD**

Location
5000 S 13TH STREET, LEAVENWORTH, KS 66048

Date
10.16.2015

VIA Project Number
VA770-15-P-0799

A/E Project Number
2015-06

Drawing Number
MEP0

VA CMOP
Consolidated Mail
Outpatient Pharmacy
5000 S 13TH STREET,
LEAVENWORTH, KS 66048

**Department of
Veterans Affairs**